



www.ari-cn.com



ARI

ARI Medical Technology Co., Ltd.

Add: Block A, Lotus Industrial Park, Economic Development Zone, Hefei City, Anhui, China.

ARI Medical Equipment Co., Ltd.

Add: Block 15, Gongming the 4th Industrial Park, Baoan Zone, Shenzhen City, Guangdong, China.

Tel: +86-551-63802963, +86-755-27196156 Fax: +86-551-63802920

Email: sales@ari-cn.com, info@ari-cn.com

Http: [//www.ari-cn.com](http://www.ari-cn.com)

ARI Medical Technology Co., Ltd.

ARI Medical Equipment Co., Ltd.



Company Profile **ARI**

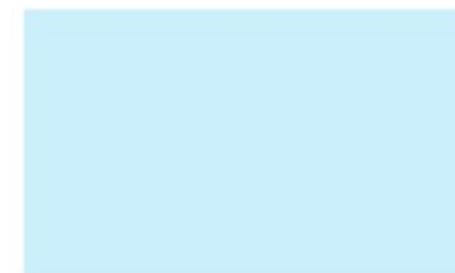
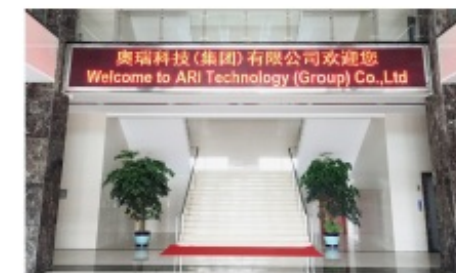
ARI Medical is a professional provider of medical equipment and solutions in China, we are dedicated to providing one-stop solution of medical equipment with more than 15 years' experience. ARI combines the manufacture, research & development and distribution of medical equipment into one entity and includes three factories. Our headquarters locates in Hefei City, Anhui province. Production base locates in Anhui, Jiangsu and Guangdong province, which are the most important zones of medical industry in China.

Since its establishment, the group has adhered to corporate culture featuring "harmonious, enterprising and jointly prosperous" in a bid to build an efficient team and learning organization. Therefore, as early as 2007, ARI has established an effective manufacture system and management system. Now we have three modern manufacturing facilities in Anhui, Jiangsu and Guangdong, covering more than 50,000 square meters. Our factories are in accordance with ISO 9001 and ISO13485 quality system requirements. Such products we manufactured, the quality has been approved and obtained several international standards as CE, FDA, ISO, AAMI-SD09: 2002. Their performance has reached advanced level in the world.

According to the needs of our customers, we have cooperated with other companies and took part in the management and to be the shareholder in the past ten years. This can assure us to provide a full range of medical equipment and solutions. After long time efforts, we have enlarged our product line to meet whole hospital project requirement. Now we can provide complete equipment solution for hospital, and also installation guidance, operation and maintenance training and marketing support.

In China, we have distributed our medical equipment to over 500 hospitals, clinics and healthcare facilities. Outside China, we have exported our medical equipment to more than 100 countries in Europe, America, Africa, Oceania and Asia. As qualified supplier to United Nations Foundation, we also won the bid from the Ministries of Health in many countries. Now our brand "ARI" have gained wide customer recognitions for the reasonable price, perfect service and superior quality of our products.

Looking ahead, we will focus on development of new products, R&D, manufacturing, marketing and services. To be the creator of products of high quality and meet every customers' demands. By partnering with our allies around the world, we will make every effort to promote human health.



▶ VISION

ARI dedicated to make better healthcare solutions for people around the world.

▶ MISSION

To provide one-stop solution for hospital, clinic and laboratory.
To create value for our distributors and employees.

▶ CORPORATE MOTTO

Your Health Is Always Our Goal.

▶ TEAM CONCEPT

Harmonious, Enterprising and Jointly Prosperous.

Operating Theatre Equipment

- 1-2 Anesthesia Machine
- 3-4 Ventilator
- 5 Defibrillator
- 6 Electrosurgical Unit
- 7 Patient Monitor
- 8 Surgical Pendant
- 9 Operating Lamp
- 10 LED Operating Lamp
- 121 Operating Table
- 13 Suction Unit
- 14 Medical Pump

OB/GYN Equipment

- 15 Colposcope, Operation Microscope
- 16 Fetal Monitor, Fetal Doppler
- 17 Infant Incubator
- 18 Infant Warmer, Infant Phototherapy Unit

Diagnostic Equipment

- 20 Ultrasound Scanner
- 21 ECG Machine

Sterilizer (Autoclave)

- 22 Vertical Pressure Steam Sterilizer
- Plasma Sterilizer
- Horizontal Cylindrical Pressure Steam Sterilizer
- Horizontal Pulse Vacuum Sterilizer

- 23 Table Pressure Steam Sterilizer
- Table Pulse Vacuum Sterilizer
- Dry Heat Sterilizer
- Portable Pressure Steam Sterilizer

Laboratory Equipment

- 24 Centrifuge, Spectrophotometer, PCR Analyzer
- 25 Water Bath, Shaker, Oscillator
- Mixer, Stirrer, Distiller, PH Meter
- 26 Pipette, Microtome, Dry Oven
- Laboratory Incubator, Water Purifier
- 27 Ultrasonic Cleaner, Biological Microscope
- Biological Safety Cabinet
- Medical Refrigerator, Medical Hand Sink

X-ray Radiography System

- 28 X-ray Radiography System
- 29-30 DR System, Dental Computed Tomography System
- 31 C-arm X-ray System
- 32 Mobile X-ray Machine
- X-ray Mammography System
- X-ray Film Processor

In-Vitro Diagnostics

- 33 Biochemistry, Hematology, Coagulation Analyzer, Microplate Reader, Washer
- 34 Blood Gas, Electrolyte, Urine Analyzer
- Automatic Glycated Hemoglobin HbA1c Analyzer
- Full Automatic Fecal Analyzer

Hemodialysis Equipment

- 35 Hemodialysis Machine, Dialysis Chair
- Hemodialysis Consumables

Hospital Furniture

- 36 Hospital Bed, Examination Couch
- 37 Overbed Table, Bedside Cabinet
- Medical Trolley, Transfer Stretcher
- 38 Medical Trolley, Visit Chair, Waiting Chair
- Reclining Infusion Chair, Infusion Stand
- 39 Mayo Stand, Kick Bucket, Ward Screen
- Dust Bin, Stepper, Stool, Cupboard

First-Aid Equipment

- 40 First-Aid Stretcher and Apparatus

Medical Human Model

- 41 Emergency, Nursing, Clinical Model
- 42 Maternity, Diagnosis, Anatomy Model

Ophthalmic Equipment

- 43 Slit Lamp, Tonometer
- Ophthalmoscope
- Auto chart projector
- 44 Optometry Unit, Refractometer
- Auto Lensmeter
- Ophthalmic Ultrasound

Dental Equipment

- 45 Dental Unit, Dental X-ray
- Cassette Sterilizer

ENT Equipment

- 46 ENT Diagnostic Set, Otoloscope
- Laryngoscope
- ENT Treating Desk and Chair

Home Care Equipment

- 47 Oxygen Concentrator, Nebulizer
- Blood Pressure Monitor, Oximeter

Other Products

- 48 Scales
- 49 Bone Drill, Head Bracket
- 50 Surgical Staplers
- 51 Surgical Sutures
- 52 Medical Consumables
- Walking Aids
- Shape Destroyed Machine
- Stethoscope
- Anti-decubitus Mattress
- X-ray Film Illuminator
- X ray Protective Aprons

Anesthesia Machine

AR-325B

- Pneumatically driven electronically controlled system
- Build-in ventilator, 10.4" TFT color LCD screen
- 5-tube Flow meter: O₂, N₂O, Air, 0.1L/Min~10L/Min
- O₂, N₂O linkage and N₂O Stopper
- Low oxygen pressure alarm
- Flow rate of rapid oxygen supply: 25~75L/min
- Two Vaporizer: Halothane, Enflurane, Isoflurane and Sevoflurane
- Respiratory Bellows: bellows for adults & children
- Ventilation mode: IPPV, SIPPV, SIMV, PEEP, MANUAL, SIGH, IMV, VCV, PCV
- Tidal volume: 50~1500 ml (20~1500 ml)
- Rate: 1~99 bpm
- SIMV rate: 2~20 bpm
- I:E: 4:1~1:8
- Inspiratory trigger pressure: -1.0~2.0 kPa
- PEEP: 0~2.0 kPa
- Pressure range: 1.0~6.0 kPa
- SIGH: 1.5 times the inspiratory time (70-150 adjustable)
- Inspiratory platform: 0~50%
- Security Alarm System: Oxygen Concentration alarm, Airway pressure alarm, Per-minute ventilation volume alarm, Sustained high-pressure alarm, Suffocation alarm
- 12" Patient Monitor (ECG, RESP, NIBP, SPO₂, 2_TEMP, PR/HR)
- Option: EIC02, IBP



Anesthesia Machine

AR-324

- Pneumatically driven electronically controlled system
- Build-in ventilator, 5.7" LCD screen
- 4-tube Flow meter: O₂, N₂O, 0.1L/Min~10L/Min
- O₂, N₂O linkage and N₂O Stopper
- Low oxygen pressure alarm
- Flow rate of rapid oxygen supply: 25~75L/min
- Two Vaporizer: Halothane, Enflurane, Isoflurane and Sevoflurane
- Respiratory Bellows: bellows for adults & children
- Ventilation mode: IPPV, SIPPV, SIMV, PEEP, MANUAL, SIGH
- Tidal volume: 50~1500 ml
- Rate: 2~99 bpm
- SIMV rate: 2~20 bpm
- I:E: 2:1~1:8
- Inspiratory trigger pressure: -1.0~2.0 kPa
- PEEP: 0~2.0 kPa
- Pressure range: 1.0~6.0 kPa
- SIGH: 1.5 times the inspiratory time
- Security Alarm System: Oxygen Concentration alarm, Airway pressure alarm, Per-minute ventilation volume alarm, Sustained high-pressure alarm, Suffocation alarm



Anesthesia Machine

AR-323

- Pneumatically driven electronically controlled system
- Build-in ventilator, 10.4" LCD screen
- 4-tube Flow meter: O₂, N₂O, 0.1L/Min~10L/Min
- O₂, N₂O linkage and N₂O Stopper
- Low oxygen pressure alarm
- Flow rate of rapid oxygen supply: 25~75L/min
- One Vaporizer: Halothane, Enflurane, Isoflurane and Sevoflurane
- Respiratory Bellows: bellows for adults & children
- Ventilation mode: IPPV, SIPPV, SIMV, PEEP, MANUAL, SIGH, (IMV, VCV, PCV)
- Tidal volume: 50~1500 ml (20~1500 ml)
- Rate: 1~99 bpm
- SIMV rate: 2~20 bpm
- I:E: 2:1~1:8 (4:1~1:8)
- Inspiratory trigger pressure: -1.0~2.0Kpa
- PEEP: 0~2.0Kpa
- Pressure Range: 1.0~6.0Kpa
- SIGH: 1.5 times the inspiratory time (70-150 adjustable)
- Inspiratory platform: 0~50%
- Security Alarm System: Oxygen Concentration alarm, Airway pressure alarm, Per-minute ventilation volume alarm, Sustained high-pressure alarm, Suffocation alarm



Anesthesia Machine

AR-321

- Pneumatically driven electronically controlled system
- Build-in ventilator, 4.8" LCD screen
- Flow meter: O₂: 0.1~2L/min 2.5~10L/min
- Flow rate of rapid oxygen supply: 25~75L/min
- Low oxygen pressure alarm
- One Vaporizer: Halothane, Enflurane, Isoflurane and Sevoflurane
- Respiratory Bellows: bellows for adults & children
- Ventilation mode: PPV, MANUAL
- Tidal volume: 50~1500ml
- Rate: 2~99 bpm
- SIMV rate: 2~20 bpm
- I:E: 2:1~1:8
- Inspiratory trigger pressure: -1.0~2.0 kPa
- Pressure range: 1.0~6.0 kPa
- Security Alarm System: Airway pressure alarm, Per-minute ventilation volume alarm, Sustained high-pressure alarm, Suffocation alarm



Portable Anesthesia Machine

AR-902P

- Specifically designed for surgical locations where space or access is limited
- Working mode: Manual
- Patient scope: from Pediatric to Adult (3kgs over)
- Tidal volume: 20-1500ml
- Working pressure: O₂:0.3~0.4Mpa, N₂O:0.3~0.4Mpa
- Flowmeters: 2 tube 2 gas flowmeter
- O₂ range: 0.1-10L/min
- N₂O range: 0.1-10L/min
- O₂ and N₂O linkage device (ORC system), FIO₂ ≥25%
- APL valve adjustment range: 0.5-6.0Kpa
- O₂ Flush: 30-60L/min



Medical Ventilator

AR-203

- Display mode: High-definition 10.4" TFT color LCD screen
- Ventilation mode: IPPV, SIPPV, SIMV, PEEP, MANUAL, SIGH, IMV, VCV, PCV
- Tidal volume: 20~2000ml
- Rate: 1~99bpm
- SIMV rate: 1~20bpm
- I:E: 4:1~1:8
- Inspiratory trigger pressure: -1.0~2.0Kpa
- PEEP: 0~2.0Kpa
- Pressure range: 3~60cmH2O
- SIGH: 1.5 times the inspiratory time (60-120 adjustable)
- Inspiratory platform: 0~50%
- Monitoring of oxygen concentration: 21%~100%
- Security Alarm System
- Storage battery, Air compressor



Medical Ventilator

AR-201

- Display mode: High-definition 5.7" LCD screen display
- Ventilation mode: IPPV, SIPPV, SIMV, PEEP, MANUAL, SIGH
- Tidal volume: 50~1500ml
- Rate: 2~99bpm
- SIMV rate: 2~20bpm
- I:E: 2:1~1:8
- Inspiratory trigger pressure: -1.0~2.0kPa
- PEEP: 0~2.0kPa
- Pressure range: 1.0~6.0kPa
- SIGH: 1.5 times the inspiratory time
- Security Alarm System
- Storage battery



Infant Ventilator

AR-Y200

- Modes: CMV / IMV / CPAP / Manual
- Breath rate: 1~120 bpm
- Inspiratory to Expiratory Ratio: 1:1 ~ 1:3 (Special order I:E range: 10:1 ~ 1:9.9)
- Inspiratory flow: 3L/m~20L/m
- Monitoring Oxygen Concentration: 21% ~ 100%
- PEEP: 0kPa~2.0kPa
- Inspiration pressure: 1kPa~9kPa
- Inspiration time: 0.2 seconds~3.0 seconds
- Tidal volume: Minimum 10mL~300mL
- Maximum Safe Pressure: not greater than 10kPa
- CPAP: 0kPa ~ 2.0kPa
- Security Alarm System

Portable Ventilator

AR-100C

- Modes: C, A/C, SIMV, SIGH, CPAP, PEEP
- Tidal Volume: 50~2000 ml
- Respiratory Rate: 1~100bpm
- O2 Concentration: 45~100%
- Trigger Level: -20~0hpa
- Peak Pressure: 0~60hPa
- PEEP: 0~20hPa
- SIGH: 1~10 times per 100 breath
- Self Test function: Circuit Connect Prompt, Sound Alarm Test, Gas Pressure Test, Internal Battery Capacity Test, Circuit Leakage Test
- Alarm: High/Low Airway Pressure, Low Battery Voltage Alarm, Low Gas Pressure, Parameter Error, Silence, High Frequency Alarm
- Battery: Can be used for 8 hours



Portable Ventilator

AR-100D

- Modes: CMV (IPPV), A/C (SIPPV), SIMV, SPONT, PEEP (Choice of suppliers)
- Tidal Volume: 50~1200ml
- Breath Rate: 5~60 bpm
- PEEP: 0~2KPa
- O2 Concentration: 45~90%
- Sigh: 1~10 per 100 breath
- Peep: 10~60hpa (Choice of suppliers)
- Trigger Level: -10~0hpa
- Over Pressure Relief: <6kpa
- High Pressure Alarm Limit: 2~6kpa flash, red indicator
- Low Pressure Alarm Limit: 0.2~2kpa Red indicator
- Alarm Silence: 120 sec
- Battery: Can be used for 8 hours

Portable Ventilator

AR-10

- Breath Rate: 10 15 20 25 30 35bpm
- I:E: 2:1 1:1 1:1.5 1:2 1:2.5 1:3
- Tidal Volume: 300 ~ 1000ml
- AC Voltage 110V~240V
- DC Voltage 12V
- Inlet Battery 12V, 2Ah



Defibrillator

DEF-9000A / DEF-8000A

- Output waveform: DEF-9000A: Monophonic technology
DEF-8000A: Biphasic technology
- Non-synchronizer: External defibrillator
- Energy: 0, 20, 50, 100, 160, 250, 300, 360 joule
- Charging time: At 360J less than 10 sec
- Paddle: Reusable external adult paddles
(pediatric paddles integrated)
- Battery: Charge 3.5h to full
- Full charge to 35 shocks (360 Joules)
- Sealed rechargeable 12V NIMH battery



Defibrillator

DEF-9000C / DEF-8000C

- Output waveform: DEF-9000C: Monophonic technology
DEF-8000C: Biphasic technology
- Defibrillator type: Manual, Synchronized, Asynchronized
- Defibrillator Energy accuracy: <+1%
- Defibrillator Energy selection:
0, 3, 5, 7, 10, 20, 30, 50, 100, 200, 300, 360 joule (nominal at a resistance of 50)
- ECG lead: I, II, III, AVR, AVL, AVF, V1-V6, GND
- Respiration Measurement method: Thoracic impedance
- NIBP Working mode: Manual/Automatic/stat (5 minutes)
- Temperature Measurement range: 20-45°C
- Pulse Oximetry Display: Spo2 value, pulse histogram, waveform, Pulse
- Pulse range: 0-255bpm
- Optional: Recorder



Defibrillator (AED and Manual)

DEF-7000

- Display Screen Size: 7 inches (17.7 cm) diagonally
- Defibrillator Waveform: Biphasic
- AED Mode: Auto analyze and charge x3 with programmable auto energy level selection, screen prompts, and voice prompts
- Manual Mode: Energy selectable at 2, 5, 7, 10, 20, 30, 50, 70, 100, 150, 200, 300, 360 joules
- Battery Operating Time: For a new, fully charged battery: 60 defibrillator discharges at maximum energy, or 3 hours minimum of continuous ECG monitoring
- ECG Monitoring
- Pulse Oximetry (SPO2) Monitoring
- Heart Rate: 20-300BPM
- Recorder



Automated External Defibrillator (AED)

AED-7000

- Pulse Type: Biphasic Waveform
- Defibrillator Energy Sequence: 150, 150, 200J
- Charge Time: 4sec. to 150J, 8 sec. to 200J
- Defibrillator Analysis Time: 4-16 sec
- Combined Analysis and Charge Time from power up after 6 shocks
- From start of analysis to shock ready: Less than 20 seconds to 150J
Less than 30 seconds to 200J
- Extensive voice and visual prompts
- Battery: Non-Rechargeable LiMnO2 12V, 3.0Ah
- Battery Capacity: 100 discharges at 200 Joules or 120 discharges at 150 Joules



Electrosurgical unit

ESU-2000AI (LCD)

- Max 400W Electrosurgical Generator, with mono-polar and bipolar function
- Nine working modes: pure cut, blend1, blend2, blend3, contact coag, forced coag, soft coag, bipolar coag, bipolar cut
- Both hand and foot controlled
- Microprocessor controlled, LCD touch screen display

Working Modes	Mono-polar Cut	Pure cut	1W~400W (Load 800Ω)
		Blend1	1W~300W (Load 800Ω)
		Blend2	1W~200W (Load 800Ω)
	Mono-polar Coag	Blend3	1W~150W (Load 800Ω)
		Spray Coag	1W~80W (Load 800Ω)
		Forced Coag	1W~120W (Load 800Ω)
	Bipolar	Soft Coag	1W~120W (Load 800Ω)
		Bipolar Coagulation	1W~70W (Load 200Ω)
		Bipolar Cut	1W~120W (Load 200Ω)



Electrosurgical unit

ESU-350A

- Suitable for various surgical operations of cutting or/and coagulation to organism tissue
- Working Environmental temperature range of electrosurgical unit: 5°C-40°C
- Relative moisture range: ≤80%
- Atmosphere pressure range: 86-106Kpa
- Rated power:

Function	Rated power (Rated load)
Pure cut	350W/500Ω
Blend 1	250W/500Ω
Blend 2	200W/500Ω
Blend 3	120W/500Ω
Point coag	120W/500Ω
Soft coag	--
Spray coag	--
Bipolar Standard coag	50W/100Ω
Bipolar force coag	--



Electrosurgical unit

ESU-L2000(LEEP)

- Microcomputer control
- ESU-L2000(LEEP) generator adopts LEEP which specializing in gynecological intrauterine event, increasing the accuracy, controllability, security of the surgery

Five working modes:

Working Modes	Mono-polar Cut	Pure cut	1W~200W (Load 500Ω)
		Blend1	1W~150W (Load 500Ω)
	Mono-polar Coag	Blend2	1W~100W (Load 500Ω)
		Spray Coag	1W~120W (Load 500Ω)
		Forced Coag	1W~80W (Load 500Ω)

Surgical Smoke Evacuation

- Blowing rate: 100 l/min @ 6mm tube
- Noise: <60dB(A)
- Suction Adjust: 10%~100%
- Stop delay time: 0~60s
- Filter Characteristics: 99.999% @ 0.1-0.2μm
- Active Carbon: 97% @ 1 year



Handheld Multi-Parameter Monitor

AM-I

- Touch screen, 5.0 inch color TFT-LCD
- Five parameters: ECG, NIBP, SPO2, TEMP
- Build-in rechargeable Li-battery, up to 15 hours running time, support AC and DC power
- Adjustable audible and visual alarms, and sensor off alarm
- Long time monitoring and sleeping monitoring
- Storage and review data up to 3888groups via Trend Graph and Trend List
- USB and Bluetooth data upload
- Horizontal and vertical display selectable
- Back light can be adjusted
- Free advanced software are all standard on free (Bluetooth software; VSDV software for download the storage data; Guardian software for transmitting the real-time data and storing all data and waveform; Health aids software for Android mobile)
- Optional Bluetooth printer



Patient Monitor

ARI-800C

- 12.1" high resolution color TFT LCD display
- 13 Type Arrhythmic Analysis, Multi_Lead ECG Waveforms Display in Phase, Real time S_T segment analysis, pacemaker detection Drug calculation and titratiable
- Efficient resistance to interference of defibrillator and electrosurgical cautery
- SPO2 can testing for 0.1% Weak
- RA-LL Impedance Respiration
- Trend Coexist Display
- OxyCRG DyNamic View Display
- Bed to Bed view Display
- Networking capacity and nurse_calling system
- UP to 4 hours working capacity of built_in rechargeable battery
- Large volume of tabular and graphic trends information storage and easy to recall
- Anti-ESU, anti- defibrillator
- Capture dynamic waveforms

Standard configuration:

ARI-800C: ECG+RESP+NIBP+SPO2+2_TEMP+PR/HR

Optional parts: Printer, IBP, VGA and EICO2



Modular Patient Monitor

ARI-800D

- Integrated Plug in Modular, 12.1" colorful and clear TFT display
- Simultaneously display at least 10 parameters, 13 kinds of arrhythmia analysis
- ECG Waveforms of 7-lead displayed simultaneously.
- Assist to judge the heart activity directly
- 15 kinds of drug dose calculations
- Anti-electrosurgical, anti-defibrillation, suitable for monitoring critical care
- Trend interface, OxyCRG interface, BigFont interface
- Built-in detachable rechargeable lithium battery, battery life 4.5 hours
- 1000 hours trend data and trend graphs, 48 hours full waveform reviewing
- Power failure data store
- NIBP dual overpressure protection
- Wired/wireless connection
- Supporting SD card, 4 USB interface
- Various input, able to navigate by keyboard or optical mouse

Basic Configuration:

Standard: ECG, RESP, NIBP, SPO2, PR, TEMP

Optional: Printer, IBP, ETCO2 modular, CO, EEG, AG, etc.



Electrical Surgical Pendant

T.IB

- Electric moving up and down
- Horizontal rotation
- Pneumatic brake & damper device
- One AIR\O2\VAC\N2O\AGSS
- Four power outlets; one network outlet
- High carrying capacity

Basic Configuration:

One discharge device (German style) for compressed air, oxygen, nitrous oxide, suction gas and anesthetic gas respectively, four power outlets, one network outlets (Optional gases)



ICU Bridge Pendant

T.IIBQ (E)

- Combination of T.IIA and T.IIC
- Horizontal rotation
- Pneumatic brake & damper device
- One AIR\O2\VAC for each
- Four power outlets for each; one network outlet for each
- Separate dry and wet sections

Basic Configuration:

One discharge device (German style) for oxygen, suction gas and compressed air, four power outlets, one network outlets (Optional gases)



Davit Wet and Dry Pendant

T.IVB

- Occupies little space; combine wet and dry
- One AIR\O2\VAC
- Four power outlets; one network outlet

Basic Configuration:

One discharge device (German style) for oxygen, suction gas and compressed air, four power outlets, one network outlets (Optional gases)



Whole Reflector Shadowless Lamp

AML700/700-III

- Illumination: 80,000-160,000LX x2(at 1m distance)
- Facula diameter: $\phi 100-\phi 280\text{mm}$
- Depth of light beam: $\geq 600\text{mm}$
- Brightness adjustment: 8-stage continuous
- Shift of major and stand by lamps: automatic
- Color temperature: 4500K \pm 500K
- Temperature rise: $\leq 12^{\circ}\text{C}$
- Temperature rise on the head of patient: $\leq 2^{\circ}\text{C}$
- Diameter of lamp holder: 700mm x2
- Mains voltage: AC220V \pm 20% 50Hz
- Bulb voltage: AC24V
- Bulb power: 150W x2
- Input power: 200VA x2
- Height for installation: 280-320cm



12/5 Reflector Shadowless Lamp

AML1205L

- Major bulb illumination: $\geq 130,000\text{LX}$
- Stand by bulb: $\geq 60,000\text{LX}$ (at 1m distance)
- Color temperature: 4500K \pm 500K
- Mains voltage: AC220V \pm 10% 50Hz
- Bulb voltage: AC24V
- Bulb power: 425W
- Input power: 500VA
- Height for installation: 280-320cm



5 Reflector Shadowless lamp

AML05L.III (Stand Type)

- Illumination: $\geq 60,000\text{LX}$ (at 1m distance)
- Color temperature: 4000K \pm 500K
- Mains voltage: AC220V \pm 10% 50Hz
- Bulb voltage: AC24V
- Bulb power: 125W
- Input power: 150VA



1 Reflector Shadowless lamp

AML01L.III (AC/DC)

- Illumination: $\geq 25,000\text{LX}$ (at 1m distance)
- Color temperature: 3000K \pm 500K
- Mains voltage: AC220V \pm 10% 50Hz, with battery
- Bulb voltage: AC24V
- Input power: 60VA
- OSRAM halogen bulb
- Battery light lasting: 4 hours



LED Shadowless Lamp

SY02-LED5+5

- Central illuminance: 160,000 Lux /160,000 Lux
- Spot diameter: 200 -350 mm
- Color temperature: 4500 K
- Color reduction index: 96
- Service life of illuminant: 30,000h
- Total irradiance each lamp head: 510W/m²
- Definition: $\geq 600\text{TVL}$
- SNR: $\geq 46\text{db}$
- Camera shooting distance (m): 0.8-2
- Foci: F3.66-91.36 mm
- Double ratio: 22 double
- Video frequency export: 1.0Vp-p75 Ω
- Lowest height of installation: 3100 mm



LED Shadowless Lamp

AML760/760

- Illuminance: $\geq 160,000\text{Lux}/\geq 160,000\text{Lux}$
- Colour temperature: 4500 \pm 200K
- Colour reduction index (Ra): 96
- Illuminance depth: 700mm/700mm
- Total irradiance: 510W/m²
- Size of light field: 180-260mm
- Lamp head diameter: 760mm/760mm
- Rated power of bulb: 3.2V/1W
- Service life of illuminant: 50,000h
- Power supply voltage: AC110-240v, 50/60Hz
- Lowest height of installation: 2900mm
- Total power consumption: 200W
- Total LED bulb quantity: 262 pcs



LED Shadowless Lamp

YD02-LED4S

- Illuminance: $\geq 100,000\text{ Lux}$
- Color temperature: 4800 \pm 200 K
- Total irradiance: 420W/m²
- Spot diameter: 120mm-240mm
- LED bulb: 3.8V
- Input power: 100VA

LED Examination Lamp

YD01A LED (Mobile)

- Illuminance: 30,000Lux 0.5m/5,000Lux 1m
- Color temperature: 4800 \pm 200K
- Size of light field: 100mm
- Adjust: adjust light
- Power supply voltage: 220V/50Hz
- Rated power of bulb: 3.3/3w
- Crutch: adjust up/down
- Bulb: LED bulb



Electric Operation Table

AMT-D.IV

- Length: 2000 ±50mm
- Width: 500 ±20mm
- Min-max height: (680-1030) ±50mm
- Forward: ≥ 12°; Backward: ≥ 12°
- Leftward: ≥15°; Rightward: ≥ 15°
- Head board Upward: ≥ 60°; Downward: ≥ 90°
- Seat board Upward: ≥ 75°; Downward: ≥ 20°
- Leg board Upward: ≥ 15°; Downward: ≥ 60°
- Head swap back panel power folding Upward: ≥ 75°; Downward: ≥20°
- Foot board Downward: ≥75°; Angel of furcation: ≥180°
- AC/DC
- Imported Germany hydraulic engine
- Imported electromagnetic valve, ring & sensor
- Auto restoration
- Hand/panel control
- Do X-ray & C-arm



Electric Operation Table

AMT-D.IA

- Length: 2000±50mm
- Width: 500±20mm
- Min-max height: (550-850) ±20mm
- Trendelenburg: ≥20°; Rev-Trend: ≥15°
- Leftward: ≥15°; Rightward: ≥15°
- Head board fold upward: ≥40°; fold downward: ≥90°
- Backboard fold upward: ≥75°; fold downward: ≥20°
- Leg board fold outward: ≥90°; fold downward: ≥90°
- Mains voltage: AC220±10%, 50HZ
- Input power: 500VA
- Waist board lifting: 120mm
- Imported hydraulic engine, electromagnetic valve and sealing ring
- Ultra-low position for long time operation
- Do X-ray
- Leg board is separated & dischargeable
- Waist can be lifted



Multifunctional Operation Table

3008C

- Length: 2050 ±50mm
- Width: 480 ±20mm
- Height: (750-950)mm ±50mm
- Forward: ≥30°; backward: ≥25°
- Leftward: ≥20°; rightward: ≥20°
- Head board Fold upward: ≥30°; Fold downward: ≥90°
- Back board Fold upward: ≥80°; Fold downward: ≥10°
- Leg board Fold downward: ≥90°; Fold outward: ≥90°
- Waist board elevation: ≥120mm
- Base is stainless steel
- Leg board is separated & dischargeable
- Double-decked can do X-ray



Universal Operation Table

JY.A

- Length: 2000±50mm
- Width: 500±20mm
- Min-max height: (700-950) ±50mm
- Trendelenburg: ≥20°; Rev-Trend: ≥15°
- Leftward: ≥15°; Rightward: ≥15°
- Head board fold upward: ≥30°; fold downward: ≥90°
- Backboard fold upward: ≥75°; fold downward: ≥15°
- Leg board fold downward: ≥90°
- Waist board elevation: ≥80mm



Multifunctional Obstetric Operation Table

AMT-2C

- Length: 1900 ±50mm
- Width: 600 ±10mm
- Height: (750-950) ±50mm
- Back section fold upward: ≥60°; Fold downward: ≥5°
- Forward: ≥10° Backward: ≥20°
- Back section: 800×600mm
- Seat section: 410×600mm
- Auxiliary table: 600×600mm
- Auxiliary table is dischargeable



Obstetric Bed

AMT-3A

- Length: 1900 ±50mm
- Width: 600 ±20mm
- Height: 800 ±20mm
- Back section fold upward: ≥50°; fold downward: ≥15°
- Seat section fold upward: ≥30°; fold downward: ≥8°
- Leg board fold upward: ≥30°; fold downward: ≥30°
- Stainless steel





Emergency Portable Suction Unit

23B.II(AC/DC)

- Power voltage: AC 220V±10% 50Hz, DC 12V
- Negative pressure: > 0.09Mpa (680mmHg)
- Suction rate: > 20L/min
- Negative pressure range: 0.013-0.09Mpa (680mmHg)
- Suction bottle: 1000ml
- Input power: 150VA
- Pump structure: oil-free self-lubricated pump
- Noise: < 50dB
- Working type: intermittent loading, continuous operation



Mobile Electric Suction Unit

23C.I

- Power voltage: AC 220V±10% 50Hz
- Negative pressure: ≥0.09Mpa (680mmHg)
- Suction rate: ≥25L/min (35L pump suitable)
- Negative pressure range: 0.013-0.09Mpa (680mmHg)
- Suction bottle: 2500mlx2
- Input power: 400VA
- Pump structure: Diaphragm type
- Noise: ≤55dB
- Working type: intermittent loading, continuous operation



Gynecological Electric Suction Device

23C.V

- Power voltage: AC 220V±10% 50Hz
- Negative pressure: > 0.09Mpa (680mmHg)
- Suction rate: > 25L/min
- Negative pressure range: 0.013-0.09Mpa (680mmHg)
- Suction bottle: 2500mlx2
- Input power: 150VA
- Pump structure: Diaphragm type
- Noise: < 55dB
- Working type: intermittent loading, continuous operation



Large Flow Electric Suction Apparatus

YX980D

- Max vacuum: ≥0.09MPa (680mmHg)
- Adjustable vacuum range: 0.02MPa~0.09MPa
- Flow rate: ≥80L/min
- Noise: ≤60dB
- Jar: 4000ml×2+2000ml×2(PC)
- Power supply: AC220, 50Hz
- Input power: 280VA
- Dimension: 44*50*99.5cm
- G.W/N.W: 25kg/22kg

Single Channel Syringe Pump

ASP-1800G (with drug library)

- Applicable syringes: 5ml, 10ml, 20ml, 30ml, 50ml, 60ml of any standard
- Rate mode: 0.1ml/h-2000.0ml/h (0.1ml/h or 1ml/h step)
- Time Mode: SOL. VOL: 0.1-9999.9ml (0.1ml step) TIME: 00:01-99:59min (1min step)
- Dose Mode: Volume: 0.1-999.9ml (0.1ml step) DRUG MASS: 0.1-999.9mg (0.1mg step) DOSE: 0.001-9999 (0.001 step) WEIGHT: 0.1-300kg (0.1kg step)
- Total Volume: 0.1-9999.9ml (0.1 ml step)
- Drug library Mode: With drug library

- Purge Rate: Programmable and adjustable
- KVO Rate: 0.0~5.0 ml/h Programmable and adjustable
- DPS Occlusion Pressure: LOW, MEDIUM, HIGH
- Alarm volume: LOW, MEDIUM, HIGH
- Bolus Rate: 0.1-2000ml/h Programmable and adjustable
- Bolus Volume Range: 1.0~50.0ml (0.1 ml step)
- History records: 2000 events stored can be checked and downloaded
- Built-in Rechargeable Battery: 12 hours of continuous operation



Dual Channel Syringe Pump

ASP-G1800 (with drug library)

- Applicable syringes: 5ml, 10ml, 20ml, 30ml, 50ml, 60ml of any standard
- 3.5 inch double display screen
- Online function: the 2 channels can work cyclically and repeatedly
- Rate mode: 0.1ml/h-2000.0ml/h (0.1ml/h or 1ml/h step)
- Time Mode: SOL. VOL: 0.1-9999.9ml (0.1ml step) TIME: 00:01-99:59min (1min step)
- Dose Mode: Volume: 0.1-999.9ml (0.1ml step) DRUG MASS: 0.1-999.9mg (0.1mg step) DOSE: 0.001-9999 (0.001 step) WEIGHT: 0.1-300kg (0.1kg step)

- Total Volume: 0.1-9999.9ml (0.1 ml step)
- Drug library Mode: With drug library
- Purge Rate: Programmable and adjustable
- KVO Rate: 0.0~5.0 ml/h Programmable and adjustable
- DPS Occlusion Pressure: LOW, MEDIUM, HIGH
- Alarm volume: LOW, MEDIUM, HIGH
- Bolus Rate: 0.1-2000ml/h Programmable and adjustable
- Bolus Volume Range: 1.0~50.0ml (0.1ml step)
- History records: 2000 events stored can be checked and downloaded
- Built-in Battery: Rechargeable 12 hours of continuous operation



Single Channel Infusion Pump

AIP-1200Y (with drug library)

- Fit IV tubes: Any brand IV set after exactly calibration
- Delivery rate range: 0.1~1200ml/h
- Delivery time range: 0h1min~99h59min (1 min step)
- Volume limit range: 0-9999ml (1ml step)
- Total Volume Range: 0-9999ml (1ml step)
- Dose Mode: Volume: 0.1-999.9ml (0.1ml step) DRUG MASS: 0.1-999.9mg (0.1mg step) DOSE: 0.001-9999ug/kg/min (0.001ug/kg/min step) WEIGHT: 0.1-300kg (0.1kg the least step)

- Drug library: with drug library, can store 1030 kinds of drugs
- KVO Rate: 0.0~5.0ml/h, programmable and adjustable
- DPS Occlusion Pressure: low, medium or high
- Alarm volume: low, medium or high
- Bolus rate: 1.0~1200ml/h
- Bolus volume: 1.0~100ml
- Purge Rate: Programmable and adjustable
- History records: 2000 events stored can be checked and downloaded



Dual Channel Infusion Pump

AIP-Y1200

- LCD display screen and micro computer controlled
- KVO status: After finishing the total volume of infusion, the pump will switch to KVO status automatically (Keep vein open status)
- KVO Rate: 1-2ml/h
- Audible and visual alarm: Five kinds of alarms including Occlusion alarm, Bubble alarm, Door Open alarm, Infusion Finished alarm and Under-voltage alarm
- Can be used to infuse colorless transparent liquid and high nutrient solutions and color opaque liquid

- AC/DC alternative, built-in NI-MH rechargeable battery (battery work time: 2 hours)
- Two setting modes: drop/min and ml/h
- Infusion flow rate: Specialized infusion apparatus: 0.1-1200ml/h Ordinary infusion apparatus: 0.1-600ml/h
- Total infusion volume preset: 0.1-9999ml
- Occlusion sensitivity: three adjustable levels of occlusion pressure
- Reserve call interface



Colposcope

ARI-II Series

Item	ARI-II-L	ARI-II-1L
Observation angle	45° tilted binocular observation unit	
Magnification of eyepiece	1.6X	
Interpapillary distance	50mm-80mm	
Diopter	±5D	
Focal length of objective	F=300mm(M58x0.75)	
Magnification changer	5-step magnification change 0.4X, 0.65X, 1X, 1.5X, 2.5X	
Total magnification	2.7X, 4.4X, 6.6X, 10X, 16.6X	
Linear field	90mm, 55mm, 37mm, 24mm, 15mm	
Beamsplitter	50:50	
TV adapter	C-mount 1/3" CCD camera attachable	
Fine focusing distance	20mm	90mm
Balance arm	Counterweight adjustable	No
Illumination system	Coaxial illumination with 10W LED light source, brightness adjustable	Coaxial illumination with cold light source fiber-optic cable, 24V/150W dual halogen lamp, brightness adjustable
Illumination	>20000lux	
Filter	Built-in Green and Blue	
Stand	Short column fitted on the base	Column height adjustable fixed on the round base with 3 jaws. The round base of ARI-II-1L built-in circuit board
Optional accessories	Demonstrator, Camera (MDCCC200, MTV-73X10, C-UV200), Photo adapter, Monitor, Objective (F=230mm & F=260mm)	



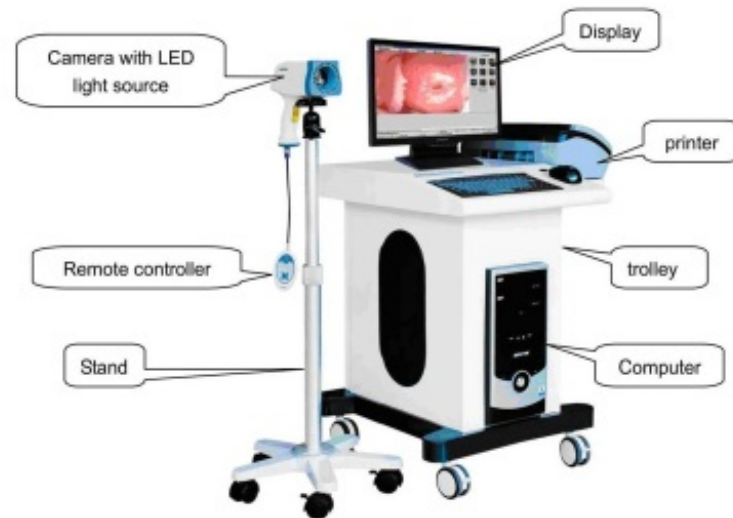
Colposcope

ARI-2200

- 1/4" High-resolution color digital CCD
- Automatic focus and manual focus control
- Video output
- Automatically adjust white balance
- LED light source, brightness adjustable
- Light Source Illumination: not less than 1200 Lux
- Light Source Irradiated surface temperature: not exceed 41°C
- Work distance: 200mm-400mm
- Display Screen Resolution: not less than 1024*768pixel
- Camera Resolution: >480 lines
- Camera Magnification: continuously adjustable from 1 to 264 times
- Signal noise ratio of lens: >=50dB
- Focusing distance: 10-800mm
- Magnification times: >=252 times
- Power supply: AC220V±10%, 50Hz±2%
- Input power: not more than 200VA

Composition

Camera, software, computer, monitor, printer, trolley



Operation Microscope

AOM-130

- Observation angle: 45° tilted
- Magnification of observation: 6X
- Interpapillary distance: 50mm-80mm
- Diopter: ±5D
- Focal length of objective: F=200mm and F=300mm two objectives
- Magnification changer: 3-step: 0.6X, 1X, 1.6X
- Total Magnification: 3X-12X
- Linear field: 60.8-15.8mm
- Fine focusing distance: 10mm
- Fiber-optic cable: 1700mm
- Illumination: Coaxial illumination with cold light source fiber-optic cable, brightness adjustable

- Lamp: 21V150W halogen lamp
- Filter: Built-in green and yellow filter
- With beam splitter and TV adapter, C-mount 1/3 inch CCD camera attachable
- With 2-part arm, counterweight adjustable and can be locked
- With floor stand
- Power supply: AC220V50HZ/AC110V60HZ
- Optional accessories: Demonstrator, Camera (MDCCC200, MTV-73X10, MTV-73X10H, DC-200, VGA200), Photo adapter, Monitor H1766, Objective F=250mm & F=400mm



Maternal / Fetal Monitor

AFM-800P

- 12.1-inch TFT color screen Folding up to 90 degree
- It can meet the need of whole stages of labor (including antepartum and intrapartum monitoring for fetus and mother)
- It also can be connected to the obstetrical central station
- Interface of parameters of FHR, TOCO and Fetal Movement with display
- Li-Ion battery, 2200mAh/14.8V Maximum 4 hours of continuous monitoring
- Alarm system
- DSP technology, real time identify and measurement for FHR, accurate and reliable results
- Special high sensitive transducer
- 42 hours data storage which can be playback and printed
- Low ultrasound power, safe to fetus
- Wide range of applying voltage(100-240V)
- Auto FM testing
- Standard Accessories: 3 in 1 transducer; 2pcs printing paper; 1pc power cable

Options:

FHR2, Maternal NIBP, SpO2, PR, ECG, HR, RESP, TEMP, Fetus waker, Trolley, Wall Mount



Maternal / Fetal Monitor

AFM-800

- 7"Color TFT LCD, folding 90 degree
- Resolution: 800*480
- Interface and digital screen of FHR, TOCO, FM
- Built-in thermal recorder, 110*100mm
- Print speed: 1, 2, 3 cm/min
- System setup can be done very easy and can be stored automatically
- Internal line thermal printer can records FHR, TOCO, the life exceeds over 20years
- A standard patient event marker and a clinical event marking button to separately mark Clinical events
- Auto Fetal movement are available
- Multi-crystals, wide beam form, high sensitivity ultrasound transducer, low ultrasound power, safer to the fetal
- AC or Li-battery operated
- More than 42 hours data storage, then can be played and reprinted
- Build-in interface to the central nurse station
- Standard Accessories: 3 in 1 transducer, 2pcs printing paper, 1pc power cable

Options:

Maternal Spo2, HR, NIBP, Temp, Twin function, Touch Screen, Trolley

Fetal Doppler

AFD-640C

- Earphone and speaker are feasible
- High sensitivity doppler probe
- Low ultrasound dosage
- Display with color LCD
- Ultrasound frequency: 2MHz
- Ultrasound Intensity: <10mW/cm2
- Power supply: AC 220/110V, 50/60Hz; DC 2pcs of Ni-MH rechargeable battery
- Display: 45mm x 25mm LCD
- FHR Measuring range: 50-240bpm
- FHR resolution: 1bpm
- FHR accuracy: ±1bpm
- Power consumption: <1W
- Dimension: 135mm*95mm*35mm, weight: 500g
- Standard Accessories: Ultrasound Probe 1pc, Battery 1pc, Adapter 1pc
- Options: Earphone, Carry Bag, Gel

Fetal Doppler

AFD-6SE

- Large TFT color display 69*52cm
- Low ultrasound power, safer to the fetus
- High-sensitive probe with wireless
- Rechargeable battery for long working time
- The same advanced FHR algorithm with that use in fetal monitor
- Two speakers for good sound quality
- Working frequency: 2.0MHz
- Working mode: pulse doppler
- Ultrasound strength: <5mW/cm2
- FHR measurement range: 50-210bpm or 30-240bpm
- Accuracy: ±1% or ±1bpm (which one is greater)
- Speaker power: 1W
- Dimension: 230D*177W*125H(mm)
- Weight: 1.5kg including battery
- Options: Wired Probe and NIBP function

Infant Incubator

AI-3

- 8.4" LCD display
- Temperature monitoring
- Temperature servo control
- Humidity Monitoring
- Humidity Servo Control
- Air temperature and body temperature control two modes
- Mattress tilt $\pm 12^\circ$
- Ergonomic designed handle with perfect height
- Trend for 2, 4, 8, 12, 24 hours and up to 7 days
- Front and rear double-walls and air curtain
- Drawers Large (28.0cm x 24.7cm x 36.0cm)
- Drawers Small (28.0cm x 11.3cm x 36.0cm) *2
- Auxiliary Power Output*3
- Backup battery to keep air flow and alarm after power failure for more than 30mins



Infant Incubator

AI-1A

- Microprocessor based servo-controlled temperature system
- Control mode: Air mode
- Humidity is adjustable in two grades
- Set temperature, air temperature, heating power are displayed separately by LED
- Self - testing function, various failure alarms by audible and visual
- >37 temperature set function
- Triple protection for over temperature with separate cut off device, more safety system
- The inclination of infant bed is adjustable
- Single wall hood, 4 operating windows and 2 iris ports
- RS232 connector -Bracket with stand



Transport Incubator

AIT-1000

- Air mode and Baby mode controlled by micro-computer
- Use AC Power and DC Power alternatively, DC 12V or DC 24V Power on the ambulance
- Set temperature, air temperature, baby temperature and internal battery voltage can be displayed separately
- Double wall hood with side door so that the bassinet can be pulled out from it
- Natural air flow humidity
- The height of whole unit can be adjusted
- Oxygen cylinder and Oxygen supply system
- Observation lamp, adjustable brightness
- Fan with low noise and long life-span
- Temperature deviation and over temperature could be amended in front panel directly
- A second thermal cut-out function for more safety
- Six operating windows, two side access operating windows can be swiveled
- Double wall hood and with white LED observe lamp
- With two oxygen cylinder and oxygen flow meter
- An adjustable height trolley can be optional



Infant Radiant Warmer

AW-2

- Microprocessor based servo-controlled temperature system
- Three modes of control: Pre-warm, manual and automatic
- Set temperature and central skin temperature, peripheral temperature, air temperature, APGAR timer, heating power display separately
- 8" LCD colorful touch screen
- Carbon steel heater for more effectivity
- Special design inclined heater head is more convenience for X ray test
- Digital skin temperature sensor, the data is accurate and stable
- Alarms functions for safety includes power failure, temperature deviation, temperature probe failure, over temperature
- Integral timer to record therapy time
- Bigger mattress
- Skin temperature trend for 5min
- Electric infant bed tilt angle is $\pm 12^\circ$
- Transparent protector folded down, with two infusion seals
- Convenient X-ray cassette tray under infant bed
- Electric height adjusted suit for operation
- With observe light, oxygen supply system and LED phototherapy



Infant Phototherapy Unit

AL-5 LED

- Irradiance intensity is adjustable in 3 grades: low, middle, high
- LCD screen display therapy time and integral time separately
- Radiant Wavelength: 420~490nm
- Height adjustable range: 850~1640mm
- Pitching angle of phototherapy head: 0~180°
- Radiant head size: 380*220mm
- Life span of LED bulbs: at least 20000 hours
- Blue LED bulbs: 17pcs
- Integral time range: 0~9999.9h
- Count down timer: 0~8h 30min
- Total irradiance for bilirubin (effective surface area 500*360mm at 360mm):
High: 2800 μ W/cm²
Middle: 2000 μ W/cm²
Low: 800 μ W/cm²
- Four castors with brake, magal and steel support base
- Using together with infant incubator, infant warmer, baby cradle

Double Infant Phototherapy Unit

AL-500 LED

- Small in size, light and high irradiation
- Circle 360 double sides for more effective radiation
- Upside phototherapy and Downside phototherapy can be use separately
- Blue light wavelength: 420mm ~ 490mm
- Circle 360 light radiation: 3700 μ W/cm²
- Downside light radiation: 2400 μ W/cm²
- Life span of blue light tube: >20000hours
- Air Temperature display range: 0 ~ 45°C
- Skin Temperature display range: 0 ~45°C
- Time accuracy: 1min/2h
- Count-up time range: 0 ~ 99.9 hours
- Count-down time range: 1min ~ 99.9 hours
- Total cumulative time: 999999 hours
- Mattress size: 613*300mm

Standard Configuration

Main body (including the radiant source, control system, infant bed, bracket), IV pole, skin temperature sensor, air temp sensor, tray, mattress, transparent protector, castors, two drawers



Echo Cardiac Color Doppler Ultrasound Scanner

AR-K70 (4D optional)

- Monitor: ≥21.5 inch high definition ultrasonic display, ≥10.4 inch touch screen
- Probe interface: 4pcs
- Applications: Abdomen, obstetrics, gynecology, heart, urinary system, small organs, superficial, blood vessels, pediatrics, newborns, musculoskeletal
- B, 2B, 4B, M, B/M, B/C, B/D, IMT, PW, CW, CCI, B/C/D, PDI, DPDI, TDI, SRI, THI, FHI, SRI, Anatomical M imaging, Panoramic imaging, Deflection imaging, Trapezoidal imaging, Free hand 3D, Real time 3D/4D, Elastography
- Automatic spectral envelope measurement
- Full digital transmission and reception of beam synthesizer
- Available probes: Convex, Tran-vaginal, Linear, Micro-convex, Cardiac, 4D probes
- Depth: 20-340mm
- Host built in 2 hard disk (SSD 120+1T), Start fast and stable
- Interface: USB interface 4pcs, HDMI interface 1pc, RJ-45 interface 1pc, Grounding wire interface 1pc, DVD RW 1pc



Mobile Color Doppler Ultrasound Scanner

AR-K8 (4D optional)

- 17 inches, high definition LED monitor
- Probe interface: 3pcs
- General measurement distance, area, angle, time, slope, heart rate, velocity, acceleration, neck hyaline layer, spectrum tracing, resistance index/pulsatility index, etc.
- Professional software package: abdomen, volume, ratio, obstetrics and Gynecology, small organs, carotid artery, Urology, heart
- Ultrasonic host operating system: Windows 7 operating system
- Spectrum pulse Doppler, Direction energy Doppler
- Real time three synchronization
- Organized harmonic imaging technology
- TGC: 8 segment adjustable
- Host built in ≥120G solid state hard disk
- Interface: USB interface 2pcs, VGA interface 1pc, RJ-45 interface 1pc, VIDEO interface 1pc, Grounding wire interface 1pc
- 4B imaging mode optional



Mobile B/W Ultrasound Scanner

AR-K2

- 15 inch LCD
- Display mode: B, B+B, 4B, B+M, M
- Measurements: distance, circumference, area, volume, heart rate, gestational age (BPD, GS, CRL, FL, HC, AC, EDD, AFI) and expected date of birth, fetal weight display, etc.
- THI tissue harmonic imaging
- Movie playback: 512 frames, continuous playback or one by one view
- Gray scale: 256 level
- Intelligent TGC control: 8 segments
- Storage: built in 8G memory, more than 4000, supporting external USB disk storage
- Have histogram function, depth measurement function, Automatic memory and generative function of obstetric data
- Interface: RS-232 interface, VGA interface, VIDEO interface, USB interface 2, DICOM



Portable Color Doppler Ultrasound Scanner

AR-580B (4D optional)

- Displaying mode: B, B/B, 4B, B/M, M, PW, B/C, B/C/D, B/D, duplex, triplex, CFM, CW
- General measurement: B mode-distance, circumference, area, volume, angle, area Red, Diam Red, M mode- distance, time, velocity, heart rate
- Abdomen measurement: Liver, GB, Aorta, GBWT, CBD, Portal Vein, Spleen
- OB packages: EDD table, GS, BPD, CRL, FL, YS, TAD, LV, OFD, NT, AC, HC, APAD, Cxlength
- Gynecological packages: Uterine measurement (Uterine diameter, uterine endometrial); left/right ovary measurement; left/right sacculus measurement; Cervix; Uterine depth
- Urology packages: Left/right kidney measurement, Volume, Cortex
- Small parts Measurement: Left/ right thyroid, volume, Isthmus and calculating report
- Cardiac Measurement Package: Heart rate, Valve speed, LV, aortic, mitral, ventricular
- Skeletal & Muscles: Skeletal & Muscles, distance, area, Hip angle
- Vascular: Senosis D, senosis A, LI/RI VVA, LI/RI Rub, LI/RI ICA
- Scanning depth: 300mm
- Body mark: Abdominal, Cardiology, Gynecology, Obstetrics, Small parts
- Input/output ports: VGA, USB port, DICOM port
- 4D function and 4D probe optional



Portable B/W Ultrasound Scanner

AR-9000C

- 12.1 inch LCD
- Display mode: B, B+B, 4B, B+M, M
- Measurements: distance, circumference, area, volume, heart rate, gestational age (BPD, GS, CRL, FL, HC, AC, EDD, AFI) and expected date of birth, fetal weight display, etc.
- THI tissue harmonic imaging
- Movie playback: 512 frames, continuous playback or one by one view
- Gray scale: 256 level
- Intelligent TGC control: 8 segments
- Storage: built in 8G memory, more than 4000, supporting external USB disk storage
- Have histogram function, depth measurement function, Automatic memory and generative function of obstetric data
- Interface: RS-232 interface, VGA interface, VIDEO interface, USB interface 2, DICOM
- Built-in 8800MA lithium battery



Wired Probe Type Ultrasound Scanner

- Point-of-care diagnostic tools
- 128 elements probes, touch High level image
- Display Mode: B Mode PW
- Element: 128
- ARI-P1 Convex Probe: 3.5Mhz/128 elements
- ARI-P2 Linear Probe: 7.5Mhz L38/128 elements
- ARI-P3 Linear Probe for PICC: 10.0Mhz/128 elements
- System Software: Android 0.4.1072
- Operation System: Android system
- Wide application: Clinic, First Aid, Emergency, Patrol, Ward Round, Bedside, ICU, Patients home, etc.
- Options: PAD, Smart Mobile Phone, Puncture Frame, Printer, Stent



Wireless Probe Type Ultrasound Scanner

- Workable with Tablet or Smart Phone
- Applicable in emergency, clinic, outdoor and vet inspection
- Intelligent terminal platform, powerful expansion functions on application, storage, communication, printing
- Scanning mode: Electronic array
- Display mode: B, B/M (B/W Probes)
- Measure: Length, Area, Angle, Obstetrics
- Built-in and replaceable battery; battery working time: 3 hours
- Charging method: USB charging, or wireless charging
- WiFi type: 802.11g/20MHz/5G/450Mbps
- Working system: Apple iOS, Android, Windows



ECG Machine With Color Screen

ECG-C01G (1 Channel)

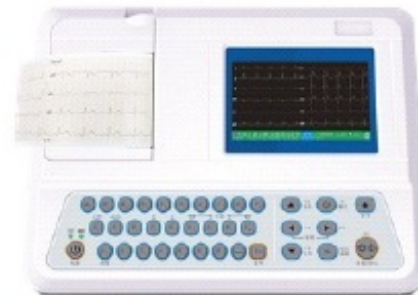
- Compact and small size, portable and light weight, easy to operate
- Accurate pulse pace identification function
- High accuracy digital filter, auto baseline adjustment
- 12 leads synchronously acquisition and record
- Excellent automatic interpretation
- 50mm, single channel format recording
- Working modes: Manual, Automatic, Arrhythmia Analysis
- 320x240 graphic 3.5" color LCD to display detailed ECG information
- 250 cases storage and reply
- Available to input detailed patient information
- Built-in rechargeable Ni-MH battery continuously working for 3~4 hours
- Optional languages: English, French, Italian, Spanish, Russian, Turkish
- Optional for PC ECG software, laser printer printing, USB disk storage and SD card storage



ECG Machine With Color Screen

ECG-C03W (3 Channel)

- Compact in size, easy and direct operation, portable
- Accurate pace pulse identification and automatic analysis function
- Four working modes: Manual / Auto / Physical Examination / Storage
- 80mm, 3 channel format recording
- Freeze function: can replay 12 seconds cardiograph front and back
- Fast ECG test under the [Physical Examination], saving power and paper
- Store and replay cardiograph without printing parameters and diagnosis under the Storage Mode
- 5" 800x480 graphic 5 inch color screen
- Alphabet keyboard fast inputting clinical information
- Adapt to 110-230V, 50/60Hz AC power supply. Built in rechargeable battery
- 12 lead waveforms view with 250 patient information storage (extendable)
- Built-in USB, RS232 interface, EXGNET software optional
- USB interface for net transmission, USB flash disk and USB printer



ECG Machine With Color Screen

ECG-C06G (6 Channel)

- Compact in size, easy and direct operation, portable
- Accurate pacing pulse identification and automatic analysis function.
- Four working modes: Manual / Auto / Physical Examination / Storage
- 112mm, 6 channel format recording
- Freeze function: can replay 12 seconds cardiograph front and back
- Fast ECG test under the [Physical Examination], saving power and paper
- Store and replay cardiograph without printing parameters and diagnosis under the [Storage] Mode
- 7" 800x480 graphic 7 inch touch screen, fast input patient information
- Adapt to 110-230V, 50/60Hz AC power supply
- Built in rechargeable Li-ion battery
- 12 lead waveforms view with 250 patient information storage (extendable)
- Built-in USB, RS232 interface, EXGNET software optional
- USB interface for net transmission, USB flash disk and USB printer



ECG Machine With Color Screen

ECG-C12B (12 Channel)

- Compact in size, easy and direct operation, portable
- Accurate pacing pulse identification and automatic analysis function
- Four working modes: Manual / Auto / Physical Examination / Storage
- 12 channel format recording
- Freeze function: can replay 12 seconds cardiograph front and back
- Fast ECG test under the [Physical Examination], saving power and paper
- Store and replay cardiograph without printing parameters and diagnosis under [Storage] Mode
- 7" 800x480 graphic 5 inch color screen with Alphabet keyboard input
- Adapt to 110-230V, 50/60Hz AC power supply
- Built in rechargeable Li-ion battery
- 12 lead waveforms view with 250 patient information storage (extendable)
- Built-in USB, RS232 interface, EXGNET software optional
- USB interface for net transmission, USB flash disk and USB printer
- High accuracy thermal printing, adapt to 210x140mm Z-fold paper



Vertical Pressure Steam Sterilizer

LX-B35/50/75/100/120/150L

MODEL	LX-B35L	LX-B50L	LX-B75L	LX-B100L	LX-B120L	LX-B150L
Volume	35L	50L	75L	100L	120L	150L
Max Working Temperature	134℃	134℃	134℃	134℃	134℃	134℃
Max Working Pressure	0.22Mpa	0.22Mpa	0.22Mpa	0.22Mpa	0.22Mpa	0.22Mpa
Time Range	0-80min	0-80min	0-80min	0-80min	0-80min	0-80min
Temperature Range (℃)	115-129	115-129	115-129	115-129	115-129	115-129
Sterilization Chamber (mm)	Φ290*477	Φ300*537	Φ360*477	Φ360*622	Φ430*582	Φ430*672
Power	2.5KW	2.5KW	3.5KW	4.0KW	4.0KW	4.0KW



H2O2 Plasma Sterilizer

APS Series

1	Chamber dimension/volume	APS-1X/1XP: 750D*450W*400Hmm, 135L APS-2X/2XP: 1250D*450W*400Hmm, 225L
2	Chamber material	Aluminum alloy
3	Door quantity and type	Single door, automatic vertical sliding, operation on touch screen
4	Loading method	Shelf loading, double layers
5	Sterilization cycle time	Standard cycle 50mins flash cycle 26mins
6	Sterilization temperature	50℃/75℃
7	Sterilization medium	H ₂ O ₂ Solutions, 60% concentration
8	H ₂ O ₂ Solutions injection mode	Cassette type, 12 capsules on each cartridge, 2.2ml H ₂ O ₂ per capsule
9	H ₂ O ₂ Solutions consumption	APS-1X/1XP: 2 capsules per full cycle, 1 capsule per flash cycle APS-2X/2XP: 4 capsules per full cycle, 2 capsules per flash cycle
10	Power supply	Driving power: AC 380 V ? 10% 3 phases 50 Hz, 3.8kw (4.7kw)
11	Display and operation	5.7" true color Touchscreen display and operation
12	Data printer	Built-in thermal printer



Horizontal Cylindrical Pressure Steam Sterilizer

WS-YDB Series

Model	WS-280YDB	WS-200YDB	WS-150YDB
Sterilizing chamber volume	280L (φ600×1000mm)	200L (φ515×1000mm)	150L (φ440×1000mm)
working pressure	0.22 MPa		
working temperature	134℃		
Adjustment of temperature	40℃ - 134℃		
Time of sterilization	0-99 min		
Time of drying	0-99 min		
Heat average	±2℃		
Power	12KW/380V 50Hz	9KW/380V 50Hz	9KW/380V 50Hz



Horizontal Pulse Vacuum Sterilizer

WS-Series

Model	Capacity (yd)	Inner chamber Dimension (mm)	Outer Dimension (mm)	Steam pressure and consumption	Water source pressure and consumption	Power	Design pressure	Design temp.
WS-0.25	0.25	80*90*60	110*130*170	0.4-0.8Mpa 15kg	0.15-0.3Mpa 30kg	2+24KW	0.25 Mpa	138℃
WS-0.35	0.35	100*90*60	130*130*170	0.4-0.8Mpa 20kg	0.15-0.3Mpa 40kg	2+24KW		
WS-0.6	0.6	120*110*91	150*135*195	0.4-0.8Mpa 30kg	0.15-0.3Mpa 45kg	3+38KW		
WS-0.8	0.8	150*110*91	180*135*195	0.4-0.8Mpa 40kg	0.15-0.3Mpa 60kg	3KW		
WS-1.2	1.2	150*118*118	179*145*195	0.4-0.8Mpa 48kg	0.15-0.3Mpa 60kg	4KW		
WS-1.5	1.5	150*118*118	210*145*195	0.4-0.8Mpa 60kg	0.15-0.3Mpa 60kg	4KW		
WS-2.0	2.0	170*100*120	200*185*200	0.4-0.8Mpa 60kg	0.15-0.3Mpa 60kg	4.5KW		
WS-2.5	2.5	195*100*140	230*185*220	0.4-0.8Mpa 70kg	0.15-0.3Mpa 70kg	6KW		



Table Pressure Steam Sterilizer

YXQ.DY.250B35/50

MODEL	YXQ.DY.250A35/50
Sterilizing chamber volume	35L (Φ300X500mm), 50L (Φ340X550mm)
Maximum working pressure	0.22 MPa
Maximum working temperature	134℃
Adjustment of temperature:	105~ 134℃
Timer	0-60 min
Chamber temperature equal	±1℃
Source power	2.7KW/AC 220V50Hz (AC110V 50Hz)
Sterilizing plate	(35L)400×200×30mm (4 pieces) (50L)500×250×30mm (4 pieces)
N. W	(35L) 73/90kg, (50L) 86/105kg
Dimension	(35L) 810*680*650mm, (50L) 880*730*700mm



Table Pulse Vacuum Sterilizer

AAL-22L-B (LCD)

Voltage	AC 220V ±10%
Frequency	50/60Hz
Max Hp	1800VA
Physical Space	22L
Class	European Class B standard
Sterilizing temperature	121℃, 134℃
Special sterilization	Kill active HV,HBV,BSE and spore
Dry procedure	Strong vacuum drying, residual humidity <0.2%
Display	LCD, multi-languages
Test	Bowie & Dick, Leak
Safety	Safety valve, Automatic check
Sterilizing record	micro-printer and USB connector optional
Water supply system	Two opened reservoirs: 3.5L fresh water and 5 liter waste water reservoirs
Water quality detection	Detect whether water quality meet the requirement
Clean procedure	Automatic clean inside pipe and steam generator
Instrument containers	5 levels with 3 trays
Chamber size	249mm*450mm/249mm*355mm
Net weight	50Kg/47KG



Dry Heat Sterilizer

GRX Series

GRX series dry heat sterilizer (hot air sterilizer)					
Model	GRX-9023A	GRX-9053A	GRX-9073A	GRX-9123A	GRX-9203A
The power supply voltage	220V 50Hz / 110V 60Hz				
Range of temperature control	RT+10℃-300℃				
Temperature resolution	0.1℃				
Constant volatility	±1℃				
Input power	870W	1120W	1570W	2070W	2470W
Working temperature	5℃-40℃				
Inner dimensions(mm)	340×325×320	420×395×350	400×450×450	550×450×550	600×600×650
Dimensions(mm)	620×490×490	720×590×520	740×590×630	940×570×730	880×750×825
Loading Bay (standard)	2 blocks				
Scheduled	1-999 minutes				



Portable Pressure Steam Sterilizer

YX-280D-I

Model	YX-280D-I (18L)	YX-280D-I (24L)	YX-280D-I (30L)
Volume	18L	24L	30L
Max Working Temperature	129℃	129℃	129℃
Max Working Pressure	0.165Mpa	0.165Mpa	0.165Mpa
Time Range	0-999min	0-999min	0-999min
Temperature Range	RT-129℃	RT-129℃	RT-129℃
Sterilization Chamber	Φ280*236mm	Φ280*357mm	Φ280*412mm
Power	AC220V/50Hz/2.0KW	AC220V/50Hz/2.0KW	AC220V/50Hz/2.0KW



High Speed Centrifuge

HC-20C

- Max RPM: 20000RPM, stepless speed adjustment
- Max RCF: 27800xg
- Time: 0-99min
- Rotor capacity: 1.5/2ml*12 (Standard Rotor 1)
- Brushless frequency motor, LED display speed, RCF and time
- Available different rotors
- Over speed and imbalance alarm
- Rotor identification, electromagnetic door locks
- Touch panel control, the error code display
- LCD display optional



High Speed Refrigerated Centrifuge

HC-20F

- Max RPM: 20000RPM, stepless speed adjustment
- Max RCF: 27800xg
- Time: 0-99min
- Rotor capacity: Angle rotor 1.5/2ml*12 (Standard Rotor 1)
- Temperature range: -20℃ ~ +40℃
- DC brushless frequency motor, LED display speed, RCF and time
- French refrigeration compressor
- Enabling automatic malfunction alarm
- With safety switch and electromagnetic door locks
- Touch panel control, the error code display
- LCD display optional, inverter motor optional



Special Centrifuge

HC-12C (Hematocrit)

- Max RPM: 12000RPM, stepless speed adjustment
- Max RCF: 15300xg
- Time: 0-99min
- Rotor capacity: φ1.5*75mm*24 capillary tubes
- Strong plastic case with metal lid
- High power brushless motor, microcomputer controlling
- LED display speed and time
- Over speed and imbalance alarm
- With mechanical door lock and safety switch
- Error code display, speed up and down adjustment
- With brake and automatic alarm after operation; with reader



Spectrophotometer

UV-752

- Optical system: CT grating monochromatic
- Wavelength range: 195 nm - 1020nm
- Wavelength accuracy: ±1 - 2 nm
- Spectral bandwidth: 5 nm
- Wavelength repeatability: 1 nm
- Stray light: ≤ 0.3%T @220nm
- Photometric accuracy: ±0.5%T
- Photometric repeatability: 0.2%T
- Stability: ±0.004 A/h @500nm
- Work Pattern: T, A, C
- Display area: 0 - 200%T, -0.3 - 3A
- Display modes: 4 LCD
- Zero setting automatic



Low Speed Centrifuge

LC-04L

- Max RPM: 4000RPM, stepless speed adjustment
- Max RCF: 2325xg
- Time: 0-99min
- Rotor capacity: 20ml*12 (Standard Rotor 1)
- Strong plastic case
- Brushless motor
- LCD display speed, RCF and time
- Over speed and imbalance alarm
- Touch panel control, automatic stop once lid open
- Error code display, speed up and down adjustment



Low Speed Refrigerated Centrifuge

LC-04F

- Max RPM: 4000RPM, stepless speed adjustment
- Max RCF: 2755xg
- Time: 0-99min
- Max capacity: swing rotor 100ml*4, 50ml*8, 15ml*16, 10ml*24
- Temperature range: -5℃ ~ +30℃
- DC brushless frequency motor
- French refrigeration compressor
- LED display speed, RCF and time
- Automatic malfunction alarm
- Touch panel control
- With safety switch and electromagnetic door locks
- Error code display



Special Centrifuge

MCKS-1200(PRP)

- Max RPM: 12000RPM
- Max RCF: 7900xg
- Time: 0-99min
- Rotor capacity: 1.5ml/0.5ml/0.2ml*6, and 0.2ml*8*2 PCR tube
- Strong plastic case, with microcomputer control
- DC brushless motor
- LED display speed and time
- Door locked and protection; when open the cover, it will stop
- Include with two kinds of centrifugal rotors, suitable for many kinds of centrifuge tubes and PCR tubes (two rows)



PCR Analyzer

A600 Super Gradient

- Block Capacity 6*16wells*0.2 individual module, six different annealing temperatures could be set for each zone
- Tube Type: 0.2ml PCR tubes, 8/12 Strips, 96 wells PCR plate
- 7" Color Touch Screen, graphically display the real-time protocols and running status
- Communications Ports: 2 USB and 1 LAN
- Venting System: Front air in and back air out, two cyclers can be placed side by side
- Max. Heating Rate: 5.5℃/s
- Max. Cooling Rate: 4.5℃/s
- Gradient Range: 0℃ ~ 105℃
- Max no of programs: Max 15,000 programs onboard, unlimited storage of protocols with USB flash drive



Water Bath

HH-W420

- Power: 1000W
- Temperature range: RT-100°C
- Temperature fluctuation: ±1°C
- Temperature uniformity: ±1°C
- Working size (cm): 40×18×13
- Package size (cm): 52×33×32



Vortex Mixer

XH-II

- Power Supply/Voltage: 220V 50/60Hz
- Power consumption: 30W
- Oscillating Frequency: Sequent 2800rpm; inching 2800rpm
- Area of the working surface: 6.2×24mm



High Speed Homogenizer Mixer

FSH-2A

- Max speed: 20000rpm
- Big Homogenate knife: 8000—18000rpm
- Small Homogenate knife: 8000—20000rpm
- Continuum working time: ≤5min
- Power: 185W
- Working Capacity (ml): 5ml, 10ml, 15ml, 20ml



Water Bath Shaker

SHA-C (Reciprocating)

- Oscillation frequency: Startup-300r/m
- Temperature range: RT-100°C
- Temperature accuracy: ±1°C
- Mode of oscillation: Reciprocating type
- Amplitude: 20mm
- Timing range: 5-120minutes (or often opened)
- Heating power: 1500W



Oscillator

HY-4 (Reciprocating)

- Oscillation Frequency: startup-300times/min
- Amplitude: 20mm
- Timing range: 0-120 min
- Power: 60W
- Loading capacity: 20kg
- Shaking mode: Reciprocating



Oscillator

KJ201BD

- Used for mixing of RPR testing card
- Stability, noiseless, reasonable rotation speed and compact design
- Working size: 384×248mm
- Timing: 0-15min



Blood Mixer

KJMR-IV

- Rolling Speed: 12-32 rpm
- Tube quantity per: 1-15 pc
- Tube diameter: Ø13±0.1mm
- Working Disc Diameter: Ø 220mm
- Angle of Inclination: 38°



PH Meter

PHS-3C

- PH range: 0-14.00pH
- mV range: 0±1999mV
- Distinguish rate: 1 mV
- Precision: ±0.1%F.S
- Temperature range: 0-60°C
- Precision: ±0.01 pH



Water Distiller

YAZD-10WS Stainless Steel

- Hydraulic discharge: 10L/h
- Heating power: 7.5KW
- Automatic cut off water
- Power supply: 380V, 50Hz
- Cut off the water supply automatically



Magnetic Heated Stirrer

MHS-A

- Power: 40W
- Heating power: 300W
- Temperature range: RT-200°C
- Speed range: 40~1600rpm, stepless adjust speed
- Time setting range: 0.1-99.9 h
- Touch panel digital display temperature, speed and time.
- With timer and data keep function, the max time is 99.9h



Mechanical Pipette

1/8/12-channel (fixed & adjustable)

- Digital display clearly reads volume setting
- The pipettes cover volume range of 0.1µl to 10ml
- Easy to calibrate and maintain with tool supplied
- Design helps avoid repetitive strain injuries
- The low part is available for autoclaving
- 8 and 12 channel pipettes are available for standard 96-well plate



Microtome

AM-3368

- Section thickness range: 0.5~100µm
- Trimming thickness range: 1~600µm
- Minimum setting value: 0.5µm
- Object feed: 28mm
- Vertical stroke: 60mm
- Specimen retraction range: 20µm
- Specimen clamp rotated at an angle of 360 degrees.
- Maximum specimen size: 50 x 50mm



Dry Oven

DZF

- Microcomputer intelligent digital display temperature control, temperature control accurate and reliable
- Vacuum degree <133Pa
- Temp. fluctuation ±1°C
- Temp. range 50-180°C/50-200°C



Intelligent Biochemical Incubator

SPX-Series

- Microprocessor control temperature and timer
- LED display temperature and running timer
- Stainless steel inner, with door lock
- The glass door is convenient for observation
- Over temperature alarm
- Automatic alarm after operation
- BOD culture (Optional interior with socket)



Water-Jacket Electro-thermal Incubator

GNP-9270

- Intelligent digital display, microcomputer controls
- Stainless steel interior, out-door with observation window
- Temperature range: RT+5~65°C;
- Temperature fluctuation: ±0.5°C
- Working size: 600×600×750mm
- Power: 770W



CO2 Incubator

CHP-160

- Capacity/ Power: 160L/ 950W
- Temperature range/Accuracy: RT+5-50°C; 37°C±0.3°C
- CO2 range/ Accuracy: 0-20%; 0.1%
- CO2 uniformity: When 5%, ±0.1%
- Working size: 500×500×650mm



Stable Temp and Humidity Incubator

LHP-160

- Microcomputer controls, alarm if over-temperature
- Temperature range: 5~50°C; added humidity: 10-45°C
- Temperature fluctuation: ±0.5
- Humidity range: 50-95%RH according to temperature
- Humidity fluctuation: ±7%RH
- Capacity: 160L
- Power: 500W



Water Purifier

AWP-III

- Capacity: 30L/h
- Buffer disposing; Physical and chemical analysis
- Fine chemistry industry; GC/HPLC
- Inlet water for Ultra-pure water machine
- Aseptic drinking water



Digital Ultrasonic Cleaner

UC-10SD

- Double Adjustable Frequency Digital Ultrasonic Cleaner
- Digital display
- Temperature control range: 0~80°C
- Fully microprocessor controlled and programmable
- Very Reliable Industrial-Grade Transducer
- Stainless steel tank
- Over-voltage and over-current protection, Low-level water protection
- Time setting range: 1-480 min



Biological Microscope

XSZ-107BN

- Viewing head: Sliding binocular head inclined at 45°
- Eyepieces: Wide field eyepiece, WF10X (WF16X optional)
- Achromatic objective: 4X, 10X, 40X (S), 100X (S, Oil)
- Stage: Double layer mechanical stage, size 140mm×140mm
- Moving range: 75mm×45mm
- Focusing: Coaxial coarse and fine adjustment
- Focusing range: 30mm, Interval 0.002mm
- Condenser: N.A=1.25 Abbe condenser, Iris diaphragm & filter
- Illumination: Halogen lamp 220V/6V20W or 110V/6V20W (LED lamp optional)



Blood Bank Refrigerator

ABR-268L

- Upright type, Exterior made from painted steel plate, Inside is stainless steel
- Four units Caster are mounted under the bottom
- Three-layer glass door with heater around to prevent ice leak, and lockable
- Interior fluorescent light
- Inner shelves (wire plastics), 4pcs
- Temperature printer is standard, Optional chart recorder, blood storage basket
- Capacity: 268L



Biological Safety Cabinet

ABS-861B2 (Class II B2)

- Internal size(W*D*H): 1220*660*630mm / 48**26**24.8"
- External size(W*D*H): 1370*760*200mm (8") / 53.9**29.9**86.6"
- Working Opening 440mm / 17"
- Internal Work Area space: 0.73m³
- UV lamp: 30W*1, Emission of 253.7nanometers for most efficient decontamination UV life indicator
- Fluorescent Lamp: 28W*2
- Consumption: 900W
- Display: LCD Display
- Material: Work Area: 304 stainless steel; Main Body: Cold-rolled steel with anti-bacteria powder coating



Low Temperature Freezer

LTF-HL398S

- Upright type, Stainless steel interior, Outer is painted steel panel, 4units casters for easy handling
- Front opening lockable door with full height handle, with Vacuum release port
- Adjustable 2-3 stainless steel shelves with inner door, double silicon gasket seal
- Two-times foaming technology, 155mm foaming insulation, with VIP+
- With USB store functions
- Optional: Chart recorder, CO2 back up system, storage racks/boxes, remote alarm system
- Capacity: 398 liters



Laminar Flow Cabinet

ALF- V1800 Vertical

- Sample protection only
- LCD Display: Airflow velocity, UV timer, UV work time, system work time, real time
- Waterproof socket: 2 waterproof sockets are located in the side panel, for optimum convenience of using small devices inside the cabinet
- UV lamp: Emission of 253.7 nanometers for most efficient decontamination
- Transparent side glass windows
- Gas Tap



Medical Refrigerator

AMR-520L

- Upright type, Exterior made from structural plate, interior made from stainless steel
- Four units Caster are mounted under the bottom
- Two-layer glass door, and inert gas inside, and lockable
- Interior fluorescent lighting
- Adjustable 5-6 units' shelves made of quality steel wire.
- Optional: temperature printer or chart recorder
- Capacity: 520L



Medical Hand Sink

SC-3

- Three Lamps
- Three Mirrors
- Three Sensor faucets
- Optional: Auto Soap Dispenser
- Optional: water heater
- Size: 1000*1000*2000mm



X-ray Radiography System

AR-160A

Power Output	25KW
Inverter Frequency	40KHz
X-ray Tube	Rotary anode, Dual-focus, Large focus: 1.3mm*1.3mm, Small focus: 0.6 mm*0.6mm, Thermal capacity:900kJ
The speed of the rotary anode	3000rpm
Tube Current	200mA
Tube Voltage	40-125kV
mAs	0.4-360mAs
Table radiography	Grid density:103L/INCH;Grid ratio:8:1;Focusing distance:120cm;Stationary type:15"×18"
Bucky stand radiography	Grid density:103L/INCH;Grid ratio:10:1;Focusing distance:150cm;Stationary type:18"×18"(import)
Power Supply	380V 50/60Hz
Operation Method	-close-table graphic program controlled LCD touch screen operation; -20 meters wireless remote control exposure



X-ray Radiography System

AR-6500

Output power	55kW
Main inverter frequency	60kHz
X-ray tube (Toshiba)	Rotary anode, dual-focus, large focus: 1.2mm, small focus: 0.6mm, big focus power output 75kW, small power output is 27kW. Anode thermal capacity:210kJ Tube thermal capacity: 900kJ
Rotary anode speed	9700rpm
mA range	10mA-500mA
Tube voltage	40kV-150kV
Anode target surface angle	12°
mAs	0.1-630mAs
Table radiography grids	Grid density:103L/INCH;Grid ratio:10:1;Focusing distance:120cm;Stationary type:15"×18"
Exposure Time	0.001s-12.5s
Power supply	380/400VAC three phase, 50Hz.
Operation method	close-table graphic program controlled LCD touchable screen operation; wireless remote control exposure



X-ray Radiography System

AR-5000B

Output power	40kW
Anode type	Rotary Anode
Focus	2.0mm / 1.0mm
Anode thermal capacity	140KJ
mA range	10mA-500mA
Method of commutation	Full wave commutation
Tube voltage	44-125KV, 41 steps, adjustable
Tube current	32-500mA, adjustable
Grid	Grid density:103L/INCH;Grid ratio:10:1; Focusing distance:120cm (for table use); Size: fixed imported 15"×18"
Cassette movement distance	≥500mm
Power supply	Two-phase four-wire 380V/10%, 50Hz, inner resistance: ≤0.17Ω, capacity: ≥40kVA



X-ray Digital Radiography System

AR-160AD

Power Output	25KW
Inverter Frequency	40KHz
X-ray Tube	Rotary anode, Dual-focus, Large focus: 1.3mm*1.3mm, Small focus: 0.6 mm*0.6mm, Thermal capacity:900kJ
The speed of the rotary anode	3000rpm
Tube Current	200mA
Tube Voltage	40-125kV
mAs	0.4-360mAs
Table radiography	Grid density:103L/INCH;Grid ratio:8:1;Focusing distance:100cm
Cassette	Film size: 356*432mm (14**17") Longitudinal movement: 560mm
Power Supply	380V, 50Hz, Capacity: ≥30KVA
Operation Method	-Close-table graphic program controlled LCD touch screen operation: -Wireless remote control exposure



X-ray Digital Radiography System

AR-8500

High-Frequency X-ray machine	Output Power	50kW	
	Main Inverter Frequency	260kHz	
	X-ray tube	Dual-focus X-ray tube	Small focus:0.6 Large focus:1.2
		Output power	22kW/50kW
		Anode Capacity	210kJ(300kU)
		Anode Angle	12°
		Speed of rotating anode	3200rpm
	Tube Current	10mA - 650mA	
	Tube voltage	40-150kV	
	mAs	1-1000mAs	
Exposure Time	0.001-6.3s		
AEC	Option		
Digital Image System	Digital Detector	Field of view	17"X17"
		Pixel	3K X 3K
		Ultimate spatial resolution	3.7LP/mm
		Pixel size	139um
		Output grayscale	14bit
		Imaging time	≤9s
	Image Workstation	Acquisition module	Inside enhancement module
		Image information management	Dicomimage transmission Dicomfirm printing Dicomimage storage (hard disk, compact disk)
		Power supply	380V 50/60Hz



Flat Panel X-ray Digital Radiography System

AR-7600B

Power	Power supply	380V
	Frequency	50Hz
	Capacity	≥65kVA
	Internal Resistance	≤0.17Ω
	Power	50KW
Digital control X-ray High Voltage System (SEDECAL Brand)	Inverter Frequency	60 KHz
	Tube voltage	40kV - 150kV, continuous adjustment
	Tube current	10mA - 640mA, grade adjustment
	mAs	0.1mAs - 10000mAs, grade adjustment
	Radiography time adjustment	0.001s-10s
	Tube Focus:big/small	1.2mm /0.6mm
Digital control X ray tube (TOSHIBA E7252)	Input power	Big focus 50kW Small focus 20kW
	Anode thermal capacity	210KJ
	Rotary anode speed	2700rpm
	X ray tube assembly movement	Rotation degree -90°-90° vertical lifting range: SID from 500-1280mm



High Frequency Mobile Digital Radiography System

AR-5200

High Frequency X-ray	Max output power	25kW		
	Main Inverter Frequency	60kHz		
	X-ray tube	Focus	Small focus:0.6; Large focus:1.3	
		Rotation anode speed	3000rpm	
	Heat capacity	900kJ (1200kHU)		
	Tube current	200mA		
	Tube voltage	40-125kV		
	MAS	0.4-360mAs		
	Digital Image System	Digital detector	Detector	Amorphous silicon detector
			scintillator	cesium iodide
View			14"×17"	
Pixel			3000×2400	
Max spatial resolution			3.5LP/mm	
Pixel size			144um	
Output gray-scale			16bits	
DQE	75%			
Workstation	Acquisition module	Gigabit nets collection		
Power supply		220V±10% 50/60Hz		



Dental Cone Beam Tomography System

ADM3000A
Application scope: Oral and maxillofacial cone beam computed tomography equipment (dental CT) with 12cmX15cm flat panel detector, can be widely used in oral and maxillofacial surgery, orthodontics, orthognathic surgery, implant, dental, temporomandibular joint Preoperative and postoperative.

- Electrical performance
Anode voltage: 60-92 kV
Anode current: 1-15 mA
Maximum output power: 1.38kw
Parameter adjustment range: 60 - 92KV 1 - 15mA
Information display: KV, MA, lifting position information, human characteristics, laser indication and positioning
- X-ray tube
Rray tube Model: D-054SB (Toshiba)
Focus: 0.5
Heat capacity: 35kJ (50kHU)
Photography mode: cone beam CT
- Image system Thales flat panel detector 650HD-E
Image receiving size: 12cmX15cm flat panel detector
Pixel size: 150
A/D conversion depth: 14bit
Acquisition mode: pulse mode
Detector Type: CMOS
Pixel matrix: 960 * 786
Limit resolution up to: two-dimensional ≥ 3.1 lp / mm
- Structural Performance
Column lift stroke: 1000mm
Lifting noise: <70dB (with buzzer sound)
Collision protection: Yes
Weight: 260kg
Dimensions: 788mm (width) X 1090mm (length) X 2200mm (height)
Power requirements: 220V / 50HZ / 2 kVA
Space requirements: the required area of 5 square meters, unilateral 2 meters
The camera room should have a protective thickness of 2 mm lead.
Electrical control device size: width 340mm, depth 550mm, height 650mm



Digital C-arm X-ray System

ARX-7000

Category	Item	Main Contents
Electrical Performance	High Frequency Inverter Power Supply	Output power: 5.0KW; Inverter frequency: 60kHz (ARX-7000A) Output power: 12 KW; Inverter frequency: 60kHz (ARX-7000B) Output power: 16 kW; Inverter frequency: 60kHz (ARX-7000C)
	Automatic, Manual Continuous Fluoroscopy	Tube voltage: 40KV~125KV continuous adjustment Tube current: 0.3mA~4mA continuous adjustment
	Automatic, Manual Intensifying Fluoroscopy	Tube voltage: 40KV~125KV continuous adjustment Tube current: 0.3mA~8mA continuous adjustment
	Radiography Tube Voltage, mA	40KV~125KV 120mA (ARX-7000A) 40KV~125KV 180mA (ARX-7000B) 40KV~125KV 200mA (ARX-7000C)
X-ray Tube	X-ray Tube Special For High Frequency	Rotary anode focus: 0.3/0.6; Anode thermal capacity: 212kJ (2844HU)
Image System	Image Intensifier	TOSHIBA 9" Image Intensifier
	CCD Camera	Medical use 1 million pixel digital CCD camera
	CCU	Real time collection, horizontal, vertical mirror image, recursive noise reduction can be adjusted continuously, multi-images storage, image pausing, last image freeze
	Monitor	19" LCD monitor



Mobile X-ray Machine

ARI-101D

Power Output	5.0KW
Frequency	40KHz
X-Ray Tube	Fixed anode, Focus 1.5
Tube Voltage	40~120KV (interval 1KV)
Tube Current	40~49KV 100mA 1~180mAs
	50~59KV 77mA 1~140mAs
	60~69KV 64mA 1~125 mAs
	70~79KV 55mA 1~110 mAs
	80~89KV 49mA 1~100 mAs
	90~99KV 44mA 1~80 mAs
	100~109KV 32mA 1~63 mAs
	110~120KV 25mA 1~50 mAs
mAs	1.0~180 mAs (46 steps)
Power Supply	220V±10% 50Hz inner-resistance≤1.0
Operation Method	Wire /Wireless control
Built-in battery	With a built-in back up battery to enable taking 200 to 500 pictures after power interruption.



C-arm X-ray System

AR-M20B

Category	Project	Content	
Fluoroscopic Capacity	Photography Max rated capacity	5.0KW	
	Fluoroscopic ax rated capacity	Tube Current 4mA, Tube Voltage 120kV	
	Automatic Fluoroscopy	Tube Voltage:	40KV~120KV adjust automatically
		Tube Current:	0.3mA~4mA adjust automatically
	Manual Fluoroscopy	Tube Voltage:40KV~120KV Continuous	Tube Current: 0.3mA~4mA Continuous
	Pulse Fluoroscopy	Tube Voltage:40KV~120KV Continuous	Tube Current: 4.1mA~8mA Continuous
Photography Tube Voltage and mA	40 KV~120 kV	20~100mA	
Plate holder Size	200mm×250mm(8"×10")or 250mm×300mm (10"×12")		
X-ray Tube	X-ray Tube Special for High Frequency	Fixed anode Dual-focus, small focus: 0.3, Inverter Frequency: 40KHz	
Video System	Image Intensifier	Image intensifier made by TOSHIBA (9")	
	CCD camera	1 million pixel	
	Monitor	2PC HD Monitor	
	Workstation	real-time image collection, specular image, recursive level 0-15 continuously adjustable, last frame frozen, Gamma correction, mass storage, image WL adjustable, gray-scale conversion, interest district balance, reversal, noise reduction, intensify, smooth, sharpen, compress, enlarge, measurement, label, print and typesetting, DicomSCP, DicomSCU, DicomDIR, Dicom Printing Structure	
Structural performance	Directive wheel	±90°revolution can freely change the moving direction of the unit.	
	Ascending & Descend	2400mm	
	C-arm	Forward and Backward Movement: 200mm Revolution around Horizontal Axis: ±180° Revolution around Vertical Axis : ±15° Focus screen distance 980mm C-arm opening: 760mm C-arm arc depth: 640mm Slip on orbit: 120°(+90°~-30°)	



X-ray Mammography System

ARI-9800D

X-ray Generator:

- Complete solid-state high-frequency high-voltage generator.
- Generator Type: High Frequency Inverter 80kHz
- Radiographic Ratings: Large Focal Point 20-35kV/10-510mAs
Small Focal Point 20-35kV/10-100mAs

-Power Rating: 6.2kW

X-ray Tube:

- Focal Spot Size: Dual Focus 0.1/0.3mm
- Target Material: Molybdenum (Mo)
- Port Material: Beryllium (Be)
- High-speed anode drive: 2800/1000rpm
- Target angle: 10°/16°
- Anode Heat Storage: 210kJ (300KHU)
- Anode Cooling: Air cooling
- Filtration: Mo(0.03mm),Al(0.5mm)

Radiographic Stand

- C-arm: Vertical Movement: 590mm
- Center of electric rotating C-arm, automatic return function by one key
- Automatically released after the exposure pressure settings display
- Compression flexible stepless speed.
- Max. pressure : 200N
- Max. travel : 150mm
- Rotations Deg : +90°~-90°
- SID: 650mm

Cassette Image Receptor

- Bucky Device: 18"24cm Bucky drive mechanism, (24cm*30cm optional)
- Grid Ratio: 5:1, 30 Line/cm

X-ray Film Processor

ADF-435A

- Developed film size: 3"x4" - 14"x17"
- Max. developing width: 430mm (17")
- Channel volume: Developer 9L, fixer 9L, water 9L
- Developing speed: 90~450S at option
- Developing temp: 20°C~40°C at option
- Developing capacity: 160pcs/h
- Power: 1.5KW
- Net weight: 105kg



Biochemistry Analyzer

ARI-B6060

- Up to 50 onboard testing items and 300 tests/hour through put:
- Refrigerated reagent compartment
- 8 step auto washing system
- Automatic dilution and retest for abnormal sample
- Automatic probe cleaning, liquid level detection, clot detection & collision protection
- 9 wavelengths: 300-700nm



Hematology Analyzer

ARI-M850 5-DIFF

- 5 part differentiation, 27 parameters
- 1 Scattergrams, 4 Histograms
- Up to 90 samples per hour
- Optical solid state LASER scattering
- High efficient light collector (patented)
- 12.1" TFT Touch Screen
- Original reagent, control and calibration
- Easy to operate: Friendly and Intellective Software
- Auto sample for option



Microplate Reader

ARR-960

- Reading Speed: 5 seconds for 96 well plate
- Filters: 405nm, 450nm, 492nm, 630nm, 4 open positions
- Photometric Range: 0.000-4.000Abs
- Photometric Accuracy: ±1% (0.000-2.000Abs)
- Wavelength Range: 340~750nm
- Calculation Mode: ABS; Cut-off; Linearity; LogX; LogY
- Display: 240*128LCD



Microplate Washer

ARW-520B

- Plate: 48/96 well and trips (U,V, Flat bottom)
- Residual Volume: ≤2ul
- Dispensing volume: Adjustable from 50 to 900 ul
- Wash cycles: 1-16 optional
- Mode of wash: From 1 to 12, row and rank, selectable
- Soak time: Up to 990 seconds adjustable
- Shake time: Up to 990 seconds adjustable
- Channel: 3 channels for washing liquid, 1 channel for waste liquid



Coagulation Analyzer

SF-8100

- Testing Method: Clotting, Immune turbidimetric and Chromogenic substrate methods.
- Throughput: PT: 260 tests per hour
- Pre-heating Positions: 16
- Reagent Positions: 36
- Sample Positions: 60 positions, drawer-type design sample rack, compatible to any tube
- Cuvettes: 1000 continuous cuvettes loading
- Data Transmission: Dual way, HIS/LIS supported



Blood Gas Analyzer

BG-800

- Multi-combination parameters
- Self-made maintenance free electrodes
- Both for syringes & capillary
- 35UL for capillary, 95UL for whole blood
- 1 min from the aspiration to result
- Long-lasting fluid system
- All-in-one design calibrate cartridge
- Cartridge expiration alarm & residue
- Preheats reagents & sample
- Optional Auto QC cartridge with H/M/L level
- Data storage >5,000
- Colorful touch screen with high resolution
- Friendly operation interface
- Infrared human-detector
- Rich data management interface
- Battery backup
- Build-in thermal printer
- Convenient bar-code system management
- Economic cost per test



Electrolyte Analyzer

AC9800

- Measuring items K,Na,Cl,Ca,pH
- Calculating item nCa, TCa
- Measuring time: 40s
- Time for sampling, measuring, washing and printing: 60s
- Sample size 100ul
- Data storage 10000
- Automatic sampling: 25-bit sampling system for option (20 samples, 2QC, 1 emergency, 1 washing)
- Communication interface 232 interface
- Display 240*64LCD
- Printer 58mm thermal printer



Urine Analyzer

UA-11B

- Test items: GLU, pH, NIT, PRO, BLD, Ca, CRE, KET, BIL, URO, SG, LEU, VC
- Test throughput: 120 tests/hour or 60 tests/hour
- Language: English
- Display: Large LCD display, Resolution 240*128
- Printer: Built-in thermal recorder, paper with 57mm
- Interface: Standard RS-232
- Storage: 1,000 results
- Light source: Super-high brightness LED white light source, with 30,000 hours lifespan



Automatic Glycated Hemoglobin HbA1c Analyzer

AC6601

- Testing Method: Low pressure ion exchange liquid chromatography
- Testing Item: glycated hemoglobin HbA1c
- Testing Scope: 3% ~ 18%
- Testing Parameters: Precision (CV) <3%, Accuracy (V) <1.50%
- Testing Time: 4 minutes (including reporting)
- Sample type: venous blood (EDTA anticoagulation), Peripheral finger blood
- Sample volume: 5ul whole blood for each sample



Full Automatic Fecal Analyzer

KU-F10

- Microscopic image method, immunization, chemical method.
- Rail-mounted sample feeding
- 50 sample holders
- Test card cabin: 5 test card cabins, 100 test cards can be placed
- Two-channel counting chamber, with higher test efficiency
- Information is shared by connection with hospital LIS system through network.
- Colloidal gold test, read out results according to coloration



Hemodialysis Machine

ADM-8

- Dialysate temperature: Preset range 33.0°C~39.0°C, ±0.1°C;
- Dialysate flow: Less than 800ml/min (Adjustable)
- Concentration of dialysate: 12.1mS/cm~16.0mS/cm, ±0.1 mS/cm;
- Dialysate ratio: Various proportions
- UF (dehydration): 0 ml/h~4000ml/h
- Resolution: 1ml
- Precision: ±1%

- Heparin Pump
- Syringe size: 20, 30, 50ml
- Flow range: 0 ml/h ~10 ml/h
- First dose range: 1.0 ~20.0ml
- Resolution: 0.1ml
- Precision: ±0.2 ml or ±5% of the reading

- Extracorporeal circulation
- Venous pressure: -180mmHg ~+600mmHg, ±10mmHg
- Arterial pressure: -380mmHg ~+400mmHg, ±10mmHg
- TMP pressure: -180mmHg ~+600mmHg, ±20mmHg
- Blood pump, assistant pump flow range: 30ml/min~600ml/min (Inner diameter Φ8mm)
- Resolution: 1ml
- Precision: ±10ml/min or 10% of the reading
- Blood leak detection: Photo chromic detecting
- Bubble detection: Double protection



Dialysis Chair

DC01

- Length: 1000mm-1880mm
- Width: 830mm
- Height: 1350mm
- Seat Height: 550mm
- Seat Width: 600mm
- Back Cushion: 200*500*130mm
- Caster: Φ125mm, PU Caster

- Back Section Lift**
- Change angle: -10°C-80°C
- Power: AC220V, 50Hz

- Power consumption: About 135W
- Up and down time: About 20 seconds
- Continuous use time: About 5 minutes

Leg Section Turn

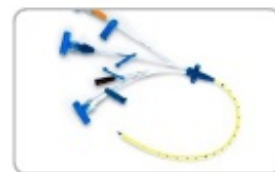
- Change angle: -10°C-80°C
- Power: AC220V, 50Hz
- Power consumption: About 90W
- Up and down time: About 20 seconds
- Continuous use time: About 5 minutes



Hollow polysulfone membrane fiber dialyzer



Hemodioxifier



Dialysis Catheter



AB Powder/Concentrate



Extracorporeal circulation blood line



Electric Hospital Bed

DK-8K 8 Function

- Size: 2050/2230*935*500/1000mm
- Nurse controller & Rail controller
- Linak electric motor
- Drainage hook
- Angle scale
- CPR handle
- Rise-and-fall guide wheel
- Detachable PP head and foot board & PP side rail



Electric Hospital Bed

DK-58K Five Function

- Overall size: L2150*W1050*H460-720mm
- 4-sectioned steel mattress base. And bed frame is made of steel epoxy, polyester powder coated and baked finish.
- Collapsible ABS guardrails
- Back, Knee, Hi/Lo, Trendelenburg & Anti-Trendelenburg adjustment by 4 motors
- Detachable ABS head/foot board, it locked with a safety switch
- I.V Pole & Drainage with PU cover
- Casters of center controlled 125mm
- Handset 1pc



Manual Hospital Bed

MK-51K 5 Function

- Overall size: L2150*W950*H400-720mm
- 4-sectioned steel mattress base. And bed frame is made of steel epoxy, Polyester powder coated and baked finish.
- Collapsible Aluminum Alloy guardrails
- Detachable ABS head/foot board, it locked with a safety switch
- I.V Pole & Drainage with PU cover
- Center control lock system
- Load bearing capacity is over 180kg
- ABS or Steel crank system for all functions
- Back, Knee, Hi/Lo, Trendelenburg & Anti-Trendelenburg adjustment by 4 cranks.



Manual Hospital Bed

MK-T1 1-crank

- Completely stainless-steel frame
- Load bearing capacity is over 180kg
- Bed surface made of cold roll steel sheet
- Bed size: 2080*900*500mm



Baby Crib

BB03

- Overall size: L820*W460*H750/1000mm
- Material: Stainless steel
- This bed can take a bath or sleeping.



Child Bed

BD10

- Overall size: L1850*W750*H550mm
- Heavy duty castor with brakes
- Load bearing capacity is over 150kg



Examination Couch

EC04

- Stainless steel frame with foldable leg
- 4pc side bar provide more heavy duty
- Padded mattress support via wood plate



Overbed Table

CB21
 -L765*W385*H710/1100mm
 -Material: The top made of fiberboard fire-proof
 -The frame will be steel tube chromed



History Trolley

HS-2
 -Size: 700*390*880mm
 -with brake on the cross



Bedside Cabinet

BS01
 -ABS material
 -Tower hanger
 -Size: 48*48*76cm
 -Colors available in Blue, Green, Grey



Medicine Trolley

MT850
 -Size: 850*520*950mm
 -5" castor with brake on the cross



Patient Trolley

A06-A101B
 -Material: Stainless steel
 -Stainless steel rail can up and down
 -Bed frame can be separated
 -Size: L1935*W570*H650mm



Anesthesia Trolley

AT850
 -High-strength alloy ABS boards
 -Stainless steel guard rail
 -Dust basket, File bin, Needle disposal holder
 -Sliding side shelf, Centralized lock, Multi bin container
 -4 luxurious noiseless casters, 2 with brakes



Transfer Stretcher

JM002 (Manual)
 -Top Coat: Electrostatic Powder Coating
 -Bed Frame: Aluminum Alloy Side Rail
 -Hi-lo: 500-900mm
 -Maximum Static Safe Load:250KG



Emergency Trolley

ET850
 -Size: 850*520*950mm
 -5pcs drawers (2 small, 2 middle and 1 big)
 -2pcs garbage bin with lid and 1 transparent file case
 -1pc I.V pole and 1pc Tray
 -5" castor with brake on the cross
 -Size: 850*520*950mm
 -5pcs drawers (2 small, 2 middle and 1 big)
 -2pcs garbage bin with lid and 1 transparent file case
 -1pc I.V pole and 1pc Tray
 -5" castor with brake on the cross



Instrument Trolley

C14
 -Size: 700*460*860mm



Dress Changing Trolley

C11
 -Size: 700*460*860mm



Instrument Trolley

C13
 -Size: 540*430*880mm



Instrument Trolley

C16
 -Large: 800*470*865mm
 -Medium: 670*440*865mm
 -Small: 600*420*865mm



Clean Trolley

C23
 -Size: 1050*475*980mm



Visit Chair

VC01
 -Steel frame with powder-coating finish
 -High density comfortable seat cushion
 -Size: 2150*700*600mm
 -Removable castor for easily extend and foldable



Waiting Chair

CW01
 -Steel frame with chrome finish
 -Molded backrest with air hole
 -Seat width: 670mm, Seat height: 440mm, Back height: 360mm
 -Optional A: 2, 3 and 4 seats available
 -Optional B: Padded seat and back



Reclining Infusion Chair

IC04
 -Metal frame with reclining design and I.V Pole
 -High density upholstery make the seat more comfortable
 -Wide wood armrest convenient and comfortable for the patient
 -One handle-controller for lay down or seat up



Infusion Stand

IV02
 -Chrome-plated steel pole provides strength and durability
 -Non-breakable composite 5-leg base and 5 swivel ball bearing casters
 -Easily converted to 2 hook or 4 hook with easy to release push-bin



Mayo Instrument Stand

MIS01

- Castors provide additional mobility and convenience
- Removable stainless steel tray in 490*340*25mm
- Tray height adjust from 736-1117mm with lock



Kick Bucket

KB02



Ward Screen

W04

- 2, 3 and 4 panels available
- Structure made from non-magnetic stainless steel tube
- Folding panels, each 60cm wide
- Fabric washable and flame retardant curtains for each section
- Mobile on twin wheel swivel castors 50mm, for easy movement
- Knockdown construction



Dust Bin

DB01



Stepper

W06

- 1, 2 and 3 steppers available
- Metal frame with powder-coating, can be stainless steel
- Solid pad with rubber cover against slide
- Durable and non-slip rubber tips



Appliance Cupboard

AC02

- Constructed from stainless steel
- 2 lockable glass door, 2 lockable drawers
- 5 layer adjustable shelves
- Elegant appearance, Knock down construction



Stool

W07, W08 (round base)



First-Aid Stretcher

AFA-1F1 Aluminum Alloy Folding

- It is mainly used for the hospitals, emergency centers and battle field to carry patients and wounded person
- Product size (L x W x H): 208 x 55 x 13cm
- Folding size (L x W x H): 104 x 17 x 9cm
- Load bearing: less than 159kg



Ambulance Stretcher

AFA-3A Automatic Loading

- This machine is very convenient; one person is enough to send the patient (with this stretcher) to the ambulance car.
- Product Size (L * W * H): High position: 190 x 55 x 90cm; Low position: 190 x 60 x 26cm
- Maximum Angle of the back: 60°
- Load bearing: less than 159kg



Scoop Stretcher

AFA-4B

- It is a separately-type stretcher, which can set the stretcher into two parts and it is easy to lock and unlock
- Product Size (L x W x H): Max. Size: 210 x 44 x 9cm; Min. size: 120 x 44 x 9cm
- Load bearing: less than 159kg



AFA-16 Head Immobilizer



AFA-17 Cervical Collar



AFA-1A6A Spine Board



Silicone Manual Resuscitator



First-Aid bag

Emergency skills training Manikin

ACLS8000C

ACLS8000C is the world leading man-machine interaction ACLS training simulation system, can simulate real emergency scenes and all the related signs of emergency patient, such as: pupil states, artery pulse, heart rhythm, heart and lung auscultation sound, etc.

Components:

Hardware:

- ACLS Full-body manikin
- S7 BP measurement trainer
- ACLS functional connector
- Laryngoscope
- Tracheal canola
- Transfusion set
- BVM
- Auscultator

Software:

- LAN application software for teacher V2.0
- LAN application software for students V2.0
- ACLS script editor V2.0



Infant CPR Manikin

CPR160

- Simulating standard open airway
- External breast compression: display device and alarm device
- Artificial respiration (inhalation): display device and alarm device
- Ratio of compression and artificial respiratory: 30:2 (one person) or 15:2 (two persons)
- Operating cycle: one cycle includes five times of 30:2 or 15:2 ratio of compression and artificial respiration.
- Operation frequency: at least 100 times per minute
- Operation methods: exercise operation
- Examination of brachial artery response: pinch the pressure ball by hand and simulate brachial artery pulse
- Working conditions: Input power is 110-240V



Blood Pressure Training Arm Model



Advanced Adult Nursing Manikin



Surgical Suture and Bandage Model



Vertebral Puncture Model



Surgical Suture Arm Model



Suture Training Kit



Infant Full Body Venipuncture Model



Gynecological Examination Model



Delivery and Maternal and Neonatal Emergency Simulator



Infant Nursing Manikin



Delivery Model



Breast Examination Model



Digital Remote Controlled Cardiopulmonary Auscultation Manikin



Hand Joint Model



Lower Limb Bone Model



Female Pelvis Model



Lumbar Vertebra Model



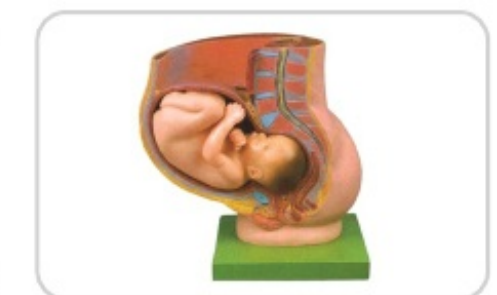
Skull Model



Human Skeleton Model 180CM



Sexless Torso



Pregnancy Pelvis with Mature Fetus-2 Parts



Luxurious Dental Care Model(32pcs, Backout)



Embryonic Development Stages Model (8 parts)

Slit Lamp

AME-5D 5 steps slit lamp

Microscope Type	Parallel Stereoscope
Magnification	Five steps magnifications
Eye Piece	12.5x
Total Magnification and Diameter of Visual Field(mm)	6x, 10x, 16x, 25x, 40x
Adjustable Range of Pupil Distance(mm)	55~75
Adjustable Diopter	-5D~+5D
Slit Width(mm)	0-9 adjustable or 0-14 adjustable
Slit Height(mm)	1~9 adjustable or 1-14 adjustable
Slit Angle	0~180°
Slit Inclination	5°, 10°, 15°, 20°
Light Spot Diameter (mm)	Φ9, Φ8, Φ5, Φ3, Φ2, Φ0.2 Or Φ14, Φ8, Φ5, Φ3, Φ2, Φ0.2
Filters	Heat Absorption, Grey, Red Free, Cobalt Blue
Illumination Bulb	12V / 30W or 12V/50W halogen bulb



Tonometer

YZ30R Tonometer

- Designed on the principle basis of goldman tonometer.
- Suitable for aig Streit type slit lamp



Auto chart Projector

CP-60

- Chart 39 selections
- Projection distance 3.- 6.m(5m is standard)
- Extent 30times at(5m)
- Tilt angle Ball joint (10 degree)
- Raster no raster; single-line; uninervate : Single-word
- Lamp 6V20W(Halogen),2.000 hrs lifetime
- Speed of image changing 2 second or ≤2 second



Ophthalmoscope

AME-8B(Rechargeable) Ophthalmoscope

- Illumination form: small light spot (1.6mm), large light spot (3.2mm), slit,central-net, Red-free filter
- 3.6V/2.6W mini-halogen bulb
- Li-on battery, 5 VA input power



Optometry Unit

COT-200

- Electromotive:
- Table Size: 965*500*25mm
 - Table Height: 850mm
 - Table Rotary angle: 90°
 - Table Sliding distance: 350mm
 - Phoropter bracket manual control

- Manual:
- Table Size: 1010*480*33mm
 - Table Height: 860mm
 - Table Rotary angle: 90°
 - Table Sliding distance:460mm
 - Phoropter bracket electromotive control



Auto Lensmeter

JD-2600A/B

- 6.4"color LCD and touch screen
- Inside UV measurement
- Modern and fashion design
- Quick measurement and accurate data
- Auto memory and auto screen save
- PD measurement and data auto save
- Measurement to various lenses, such as single lens, multifocal lens, progressive lens and contact lens, can be performed
- The screen products legible display of the measurement data and icons fir easier identification to select your desired choices for the measurement



Ophthalmic Ultrasound

2400S

- Display Mode: B, B+B, B+A, A
- Hint: preset keyword
- Case Search: Multi-keywords
- Screen: 15 inch LCD
- Built-in battery: can use 4 hours
- User-defined report template poor credit secured loans



KE-Refractometer

FA-6800

- Refractive and Keratometer measurement mode
- Refractive measurement with Hexagon prism
- With high quality of hexagon prism and highly sensitive CCD, it provides unmatched accuracy and reliability
- 7" TFT LCD color display, Just move, it will automatically focus the eye and get the value



Dental Unit

DU-8900(18)

- 4 hole high-speed handpiece tubing with connector 2 set
- Low-speed handpiece tubing with connector 1 set
- 3-way syringe (cold and hot) 2 pcs
- Adjustable headrest 1 set
- New design double armrest 1 set
- New design down tray with Alec material with touch 1 set
- With autoclavable silicone pad,maximum bearing temperature is 135-degrees;
- 6-position for handpiece ,syringe, scaler and micro motor
- Water suction and saliva ejector 1 set each
- LED operation lamp with sensor(white and yellow light) 1 set
- American style lamp arm 1set
- Build-in model LCD X-film viewer 1 set
- 24V DC motors 1 set
- Assistant control system with Alec material with touch 1 set
- Water purified system 1 set
- Water heating system 1 set
- Water bottle 1 pcs
- Auto water supply and flush cuspidor system 1 set each
- Fixed ceramic cuspidor 1 set
- Alec material table 1set
- Multi-function foot pedal DU-106 1 set
- Big dentist stool 1 pc
- PU leather cushion 1 set
- PU Foot Pad 1set
- Solenoid valve DU-097 2 pcs
- ABS plastic covers 1 set
- PVC air and water tubes
- All kinds of copper valves
- Chair with 9 memories
- With low water alarm function
- Chair with safety system
- Linked movement chair frame 1 set
- Aluminum backrest 1set



DU-8900(18)



Air Compressor



Dental Suction



Digital Sensor

Dental X-ray Unit

ADM-10A /ADM-10B / ADM-10D

- Tube voltage: 60KVp
- Tube current: 8mA
- Focus size: 1.5mm
- Total filtration: 2.5mmAL
- Exposure time: 0.2 to 4 sec
- Leak radiation:Outside one meter≤0.002mGy/h (National standard: 0.25 mGy/h)
- Optional: Tube current: 0.5mA ;
- Focus size: 0.8mm



ADM-10B

ADM-10D

ADM-10A

Cassette Steam Sterilizer

CA-52L

Quick sterilization for small type medical appliances used in dental clinic, E.N.T and gynecology departments.

Type: CA-52L Cassette autoclave	
Dimensions (L*W*H, mm)	580*460*190
Cassette external size (L*W*H, mm)	480*196*80 (CA-52)
	570*196*80 (CA-52L)
Cassette internal size (L*W*H, mm)	380*180*78 (CA-52)
	480*180*78 (CA-52L)
Cassette volume (liter)	5.2 & 6.0
Reservoir volume (liter)	3.4
Maximum steam temperature(°C)	138
Electrical rating	220VAC±10%, 50Hz, 6.3A
Weight(kg)	37



CA-52L

ENT Diagnostic Set

WG-XPC

- Ophthalmoscope— 1
- Otoscope Carrier— 1
- Ear Specula— 4
- Nasal Speculum— 1
- Laryngeal Mirror Stem— 1
- Laryngeal Mirrors— 2
- Tongue Depressor Plastic — 1
- Battery Handle— 1
- Spare Bulbs (2 Large and 2 Small 2.5v/0.3A)— 5
- Transformer— 1



Otoscope

EJ-XPC

- Size of the aural:2.5,3,4,5mm diam
- Power Supply: AC220V
- Illumination Bulb: 3.5V/0.7A
- Magnifier:3 Times



Fiber Laryngoscope

MHJ-I

- Power Supply:1.5V X2 "C" Type
- Illumination Bulb: 2.5V/0.45A
- Blades: 92, 114, 134mm for adult



ENT Treating Desk

1800DP (for single)

- Main Operating Desk--1
- Super-mute Oil-less Positive--1
- Pressure Pump--1
- Super-mute Oil-less Negative--1
- Mute Instrument--1
- Spray Gun--3
- Absorbing Gun--1
- Blowing Gun--1
- Warm-up Demist Device--1
- Versatile Cold Light Lamp --1
- Controller (weak electric controls strong one)--1
- Main and Auxillary Suction Bottles--1
- Robot Arm and Upright --1
- Equipment Set--1
- Ointment Jar--4
- Waste Bin--1
- Suction Tip--1

ENT Treating Chair

1900D (Electric)

- The flat lift range of treating chair: 560-760mm (200mm)
- Backrest tilt angle:90°~ 180°
- The rotation of treating chair: 360°, can be fixed in any position
- Headrest extension:0~200mm
- Maximum load: 135kg
- Take-off and landing speed: 10mm/s
- Input power: ≅ 150W
- The control button, and foot switch work in safety extra-low voltage



1800DP (for single)

1900D (Electric)

Oxygen Concentrator

AC-5

- Max. Flow: 5L/min
- Oxygen density: 93±3% (V/V)
- Power consumption: ≤ 510W
- Noise: ≤45dB (A)
- Oxygen density alarm function



Nebulizer

408D (Air Compressing Nebulizer)

Power Supply	AC220V /110V 50/60Hz
Input Power	180VA
Maximum Nebulization Rate	≥0.2mL/min
Medication Capacity	2-8mL
Particle Size	0.5µm to 10µm
MMAD	4µm
Sound Level	≤65dB(A)
Compressor Max Air Pressure	≥0.15MPa
Compressor Free Air Flow	≥10L/min



Blood Pressure Monitor

U-80AH (Arm Electronic), U60BH (Wrist Electronic)

- Intelligent automatic measurement of systolic, diastolic and pulse with time and date. Arrhythmia reminds.
- Store up 2*90 sets memory of measurement values.
- WHO blood pressure classification display.
- Time/Date information display.
- Measuring unit convert between Kpa/mmHg.
- Large LCD screen and easy to read.
- 4 pcs AA alkaline battery or power adapter



Fingertip Oximeter

FO-600A

- Reliable accuracy and durability
- Two Color OLED Display, four display modes.
- 4-Direction Display adjustable.
- Low voltage indicator, Real-time spot-checks.
- Low power consumption, 50 hours continuous to work.
- Low Perfusion ≤0.4%
- Automatic power off when no signal
- Small and light weight, convenient to carry
- Widely used in hospital, home healthcare, oxygen bar



Handheld Pulse Oximeter

HO-25

- Color LCD Display and Screen Rotation
- Automatic power-off function for power saving
- Three selectable working modes
- Long battery life-up 20 hours on 4 "AA" or Ni-MH rechargeable batteries
- Powerful data storage capacity
- Patient information management
- Data can be transferred to PC for storage review and printing
- Audible and visible alarm capability



Electronic Baby Scale

SH-20

- Capacity: 20kg/grad.: 5g
- Use 4 x AA batteries (not included), high precision load cells
- Large LCD with blue backlight
- Have Memo Function, USB connect to the computer
- Tray can be separated
- Unit: kg, g&lb



Mechanical Dial Scale

JSA-180

- Platform Scale with Height Meter
- Capacity: 180kg/grad: 1kg, 396lb/grad: 2 lb
- Height Meter from: 84-210 cm (hideable)
- Large Dial D=20.5 cm
- Unit: kg or kg&lb



Electronic Pediatric Scale

TCS-150-RT

- Max weighing: 150kg
- Division: 50g
- Display: LCD
- Power: AC/DC
- Height range to be measured: 60~160cm
- Min value of height per division: 5mm



Mechanical Ruler Scale

RGT.A-200-RT

- Max weighing: 200kg
- Division: 100g
- Height range to be measured: 75~200cm
- Min value of height per division: 5mm



Electronic Adult Scale

TCS-200LP

- Capacity: 200kg/grad.: 50g
- Plastic displayer, LCD screen display 120*60mm
- With Rechargeable Battery (Included)
- With BMI function
- Powder-coated cream cover& metal housing
- High measure: 60-210 cm (hideable)
- Unit: kg or lb



Baby Hanging Scale

SL-25

- Max weighing: 25kg
- Min value per division: 100g



Electronic Wheelchair Scale

LYC02

- Capacity: 250kg/grad.: 100g
- With Rechargeable Battery (Include)
- Unit: kg or g, lb
- 5.2" LCD displayer (120*57mm) with blue backlight
- Foldable handle
- Front wheel 360 degree turning; back wheel 360 degree turning and lockable



Metrical Rod

MR-200

- Height range to be measured: 60~200cm
- Min value of height per division: 1mm



Multifunctional Drill and Saw

B021

- Charger electrical source voltage: AC110 - 240V/50 - 60HZ
- Forward and Reversal
- Cranial / Bone Drill REV: ≥ 800 r.m.p.
- BUR REV: ≥ 40000 r.m.p.
- Acetabulum Drill REV: ≥ 180 r.p.m
- Cannulated Drill REV: ≥ 600 r.p.m
- Frequency of the saw: ≥ 15000 t.p.m.
- Cranial Drill Torque: ≥ 7600 gcm
- Acetabulum drill Torque: 33000gcm
- Cannulated Drill Torque: 11200gcm
- BUR TORQUE: ≥ 100 gcm
- Noise: ≤ 90 db



Oscillating Saw

B020

- Charger Electrical Source Voltage: AC220V/50HZ
- Voltage of Battery: 14.4V
- Blade Cutting Arc: 5°
- Frequency of the saw: ≥ 15000 t.p.m.
- Noise: ≤ 90 db



Ordinary Bone Drill

RA-II

- Rotation at maximum 1200rpm, stepless speed adjustment,
- Backward/forward rotation, and stable running
- Diameter of drill bit ($\varnothing 0.6\sim 8$ mm)
- Green environment-friendly battery (14.4V), disinfection-free
- Powerful mainframe, integrated closed rear cover
- High-temperature sterilization/disinfection of whole device



Head Bracket



Disposable Endoscopic Linear Cutter Stapler



Disposable Circumcision Stapler



Disposable Linear Cutting Stapler



Disposable Circular Stapler



Disposable Linear Stapler ZX-(B)Type



Disposable Anorectal Stapler



Disposable Hemorrhoidal Stapler



Disposable Skin Stapler



ABSORBABLE SURGICAL SUTURES WITH / WITHOUT NEEDLES

POLYGLYCOLIC ACID (PGA)



Synthetic, Absorbable, Braided Suture with Needle or with out Needle

CHROMIC CATGUT (CC)



Absorbable Suture with Needle or without Needle

PLAIN CATGUT (PC)



Absorbable Suture with Needle or without Needle

POLYDIOXANONE (PDS or PDO)



Synthetic, Absorbable, Braided Suture with Needle or without Needle

NON-ABSORBABLE SURGICAL SUTURES WITH / WITHOUT NEEDLES

SILK BRAIDED (SK)



Non-absorbable, Braided, Natural Suture with Needle or without Needle

POLYPROPYLENE MONOFILAMENT (PM)



Synthetic, Non-absorbable, Monofilament Suture with Needle or without Needle

NYLON MONOFILAMENT (NL)



Synthetic, Non-absorbable, Monofilament Suture with Needle or without Needle

POLYESTER BRAIDED (PB)



Synthetic, Non-absorbable, Braided Suture with Needle or without Needle



Crepe Paper



Sterilization Packages



Surgical Gloves



Chest Drainage System



Shape Destroyed Machine



Wheelchair



Stethoscope



Walking Aids



Anti-decubitus mattress



X-ray Film Illuminator



X-ray Protective Aprons