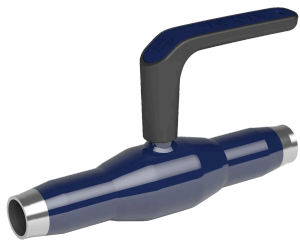


Vexve steel ball valve

Series 150, welding / welding, EN (DIN), full bore, DN 15-400, PN 25-40

Page 1



DN 15-40



DN 50-125



DN 150-200



DN 250-400

Materials

Body	DN 15-400: Steel, P235GH (1.0345)
Ball	DN 15-400: Stainless steel, X5CrNi18-10 (1.4301)
Ball seal	DN 15-400: PTFE+C
Stem	DN 15-80: Stainless steel, X8CrNiS18-9 (1.4305) DN 100-125: Stainless steel, X17CrNi16-2 (1.4057) DN 150-400: Stainless steel, X8CrNiS18-9 (1.4305)
Stem seal	DN 15-400: FPM

Mounting

welding / welding, EN (DIN)

Operation

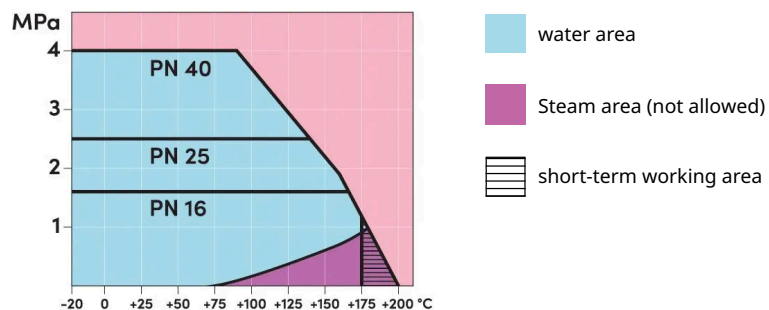
DN 15-40	composite handle
DN 50-200	zinc-plated steel handle
DN 250-400	available with manual gear or with an electric or hydraulic actuator

We recommend manual gear operation for sizes DN 200 and larger.

Operating conditions

Temperature	-20 °C - +200 °C
Leakage rate	A (EN 12266-1)

Below -20 °C contact manufacturer. Lowest allowed ambient temperature -40 °C.

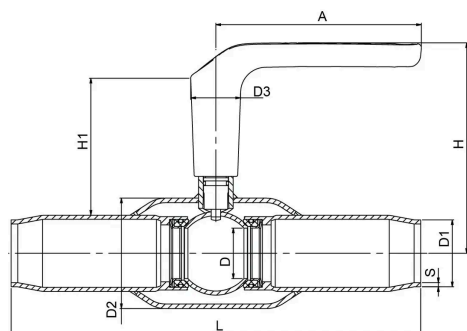


DN 15-400

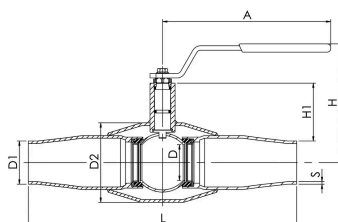
Vexve steel ball valve

Series 150, welding / welding, EN (DIN), full bore, DN 15-400, PN 25-40

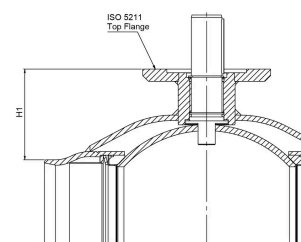
Page 2



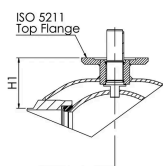
DN 15-40



DN 50-125



DN 150-300



DN 350-400

Dimensions

DN	PN	Product no.	A	D	D1	D2	D3	H	H1	L	S	Kg
15	40	150015X	130.0	15.0	21.3	42.4	32	123	87.0	230	2.3	1.3
20	40	150020X	130.0	20.0	26.9	48.3	32	125	86.0	230	2.6	1.3
25	40	150025X	130.0	25.0	33.7	60.3	32	129	85.0	260	2.6	1.9
32	40	150032X	130.0	32.0	42.4	70.0	32	133	87.0	260	2.6	2.2
40	40	150040X	130.0	40.0	48.3	88.9	32	140	88.0	300	2.9	3.1
50	25	150050	278.0	50.0	60.3	101.6		158	70.0	300	2.9	4.5
65	25	150065	278.0	65.0	76.1	121.0		171	74.0	300	3.2	6.7
80	25	150080	279.0	80.0	88.9	139.7		218	114.0	325	3.6	10.5
100	25	150100	400.0	100.0	114.3	177.8		253	113.0	325	3.6	15.5
125	25	150125	600.0	125.0	139.7	219.1		272	121.0	360	3.6	25.0
150	25	150150	870.0	150.0	168.3	273.0		281	117.0	350	4.5	34.0
200	25	150200	1200.0	200.0	219.0	355.6		343	135.0	400	5.0	60.0
250	25	150250		250.0	273.0	419.0			148.0	530	5.0	88.0
300	25	150300		290.0	323.9	508.0			206.0	686	5.6	177.0
350	25	150350		340.0	355.6	610.0			267.0	762	6.3	258.0
400	25	150400		390.0	406.0	660.0			310.0	914	7.1	553.0