

MJ-LFC

Multi-Jet Liquid Protected Register

DN15~50



TCM142/10-4793



INTRODUCTION

NWM MJ-LFC is
IMPELLER (turbine) water meter with mechanical transmission,

liquid protected register for residential application with sizes from Dn15 to Dn50 designed and manufacture by NWM and meets to the requirements of Directive 2004/22/EC on measuring instruments; the European Standard

EN14154+A1+A2: Water Meter; the International Organization of Legal Metrology OIML R-49: 2006(E): Water meters intended for the metering of cold potable water.

FEATURES



Corrosion Resistance

All the materials selected by resistance to corrosion;



High Stability

The Impeller is the only moving parts in contact with water permitting the most reliable;



Liquid-sealed

The rollers are liquid-sealed ensuring clear readings under any conditions;



Extra Inlet Filter

The filter at the inlet of the meter body permits cleaning it without breaking the metrological seal;



Non Return Valve

to avoid the reserve flow Rate AS OPTION;

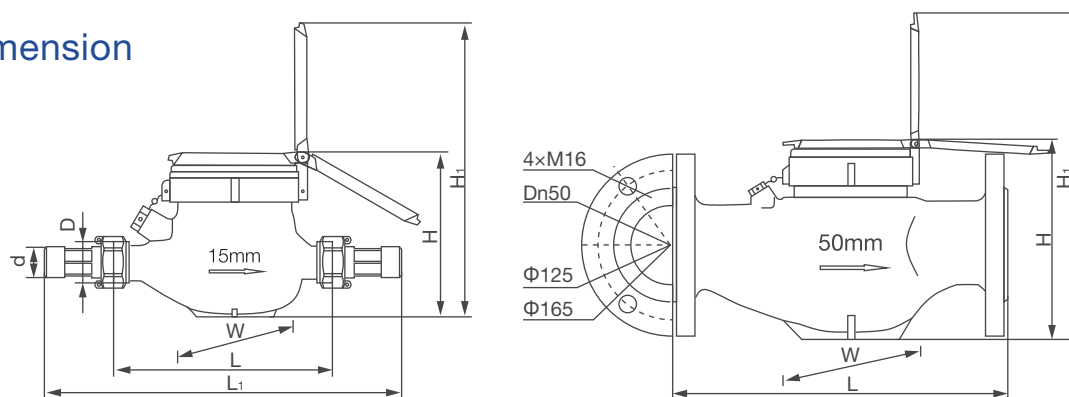


Remote Transmission

Reserve remote transmission function to realize data transmission;

SPECIFICATIONS

► Dimension



Dimensional drawing of water meter

Size (mm)	Dn15	Dn20	Dn25	Dn32	Dn40	Dn50	Dn50-Flange
L	165	190	260	260	300	300	300
L1	259	294	380	384	431	448	/
D	G3/4B	G1B	G1-1/4B	G1-1/2B	G2B	G2-1/2B	/
d	R1/2	R3/4	R1	R1-1/4	R1-1/2	R2	/
H	107.5	107.5	117.5	117.5	141.5	177	184
H ₁	191	191	206.5	206.5	256.5	292	299
W	94	94	98	98	122	145	165

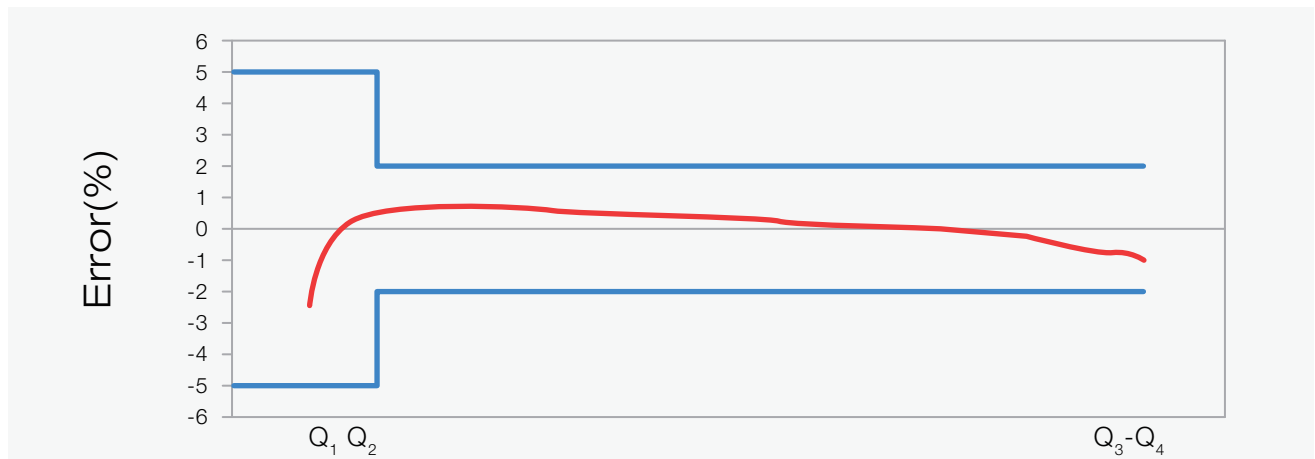
L₁: the total length with connection and the gasket without compression.

► Metrology

DN	mm	15	20	25	32	40	50
R	Q ₃ /Q ₁	160				160	
Q ₄	m³/h	3.125	5	7.875	12.5	20	31.25
Q ₃	m³/h	2.5	4	6.3	10	16	25
Q ₂	l/h	25	40	63	100	160	250
Q ₁	l/h	15.625	25	39.375	62.5	100	156.25
Max. reading	m³	99 999.9999				999 999.9999	
Min. reading	Liter	0.05					
Pressure loss	Δp	Δp<63					
Max, Pressure	MAP	MAP16					
Max, Temperate	℃	T30 / T50					

(For different Q₃ and R, please contact with NWM manufacture).

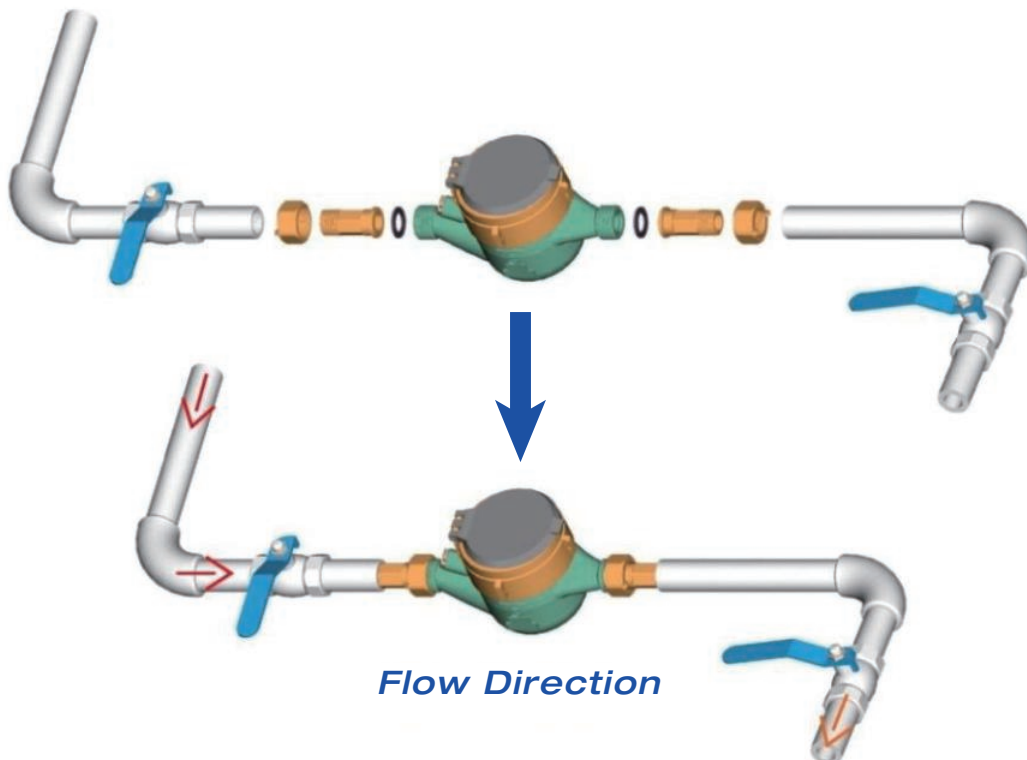
► Max Permission Error



- a. In the lower zone ($Q_1 \leq Q \leq Q_2$): maximum permission error is $\pm 5\%$
b. In the upper zone ($Q_2 \leq Q \leq Q_4$): maximum permission error is $\pm 2\%$ ($T \leq 30^\circ\text{C}$),
maximum permission error is $\pm 3\%$ ($30^\circ\text{C} < T \leq 50^\circ\text{C}$)

INSTALLATION

- The meters should be installed in HORIZONTAL position with the direction of the flow as indicated by the arrow cast on the meter body with register face upwards;
- Pipeline must be flushed before installation;
- The meter should be constantly full of water during operation;
- NWM Suggest to Installation the water meter as:



REMOTE TRANSMISSION



NINGBO WATER METER (GROUP) CO., LTD.

Address: No.355, Hongxing Road, Jiangbei District, Ningbo 315032 China

TEL: +86 574 88195820 FAX: +86 574 88195855

E-mail: sales@nwmwatermeters.com

Website: www.nwmwatermeters.com

Version No.: NWM/EN-MJ-LFC(F8-C)/2204-1.0

Copyright © 2022-2026 NWM. All Rights Reserved.

