

BMI® Medical

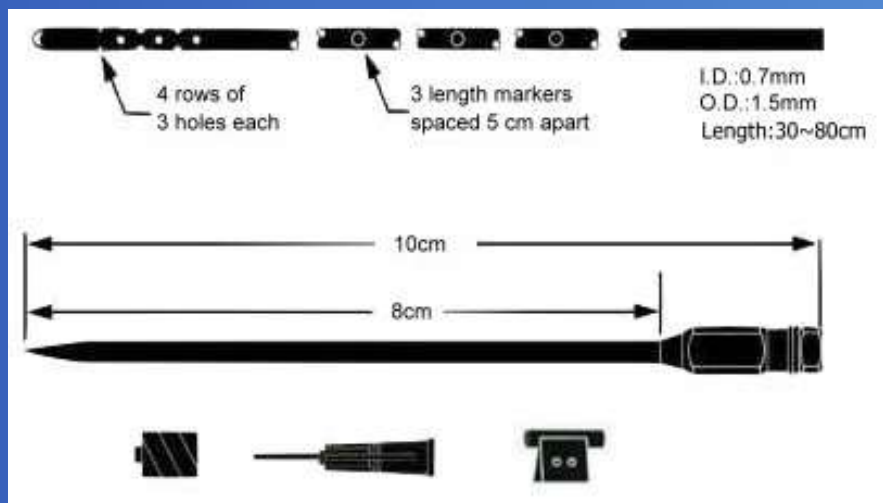
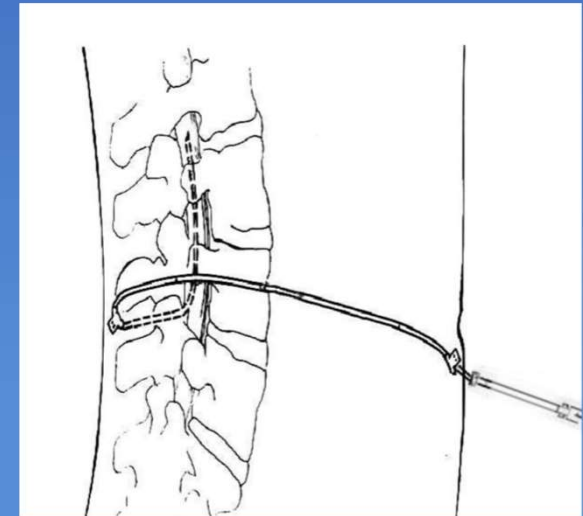
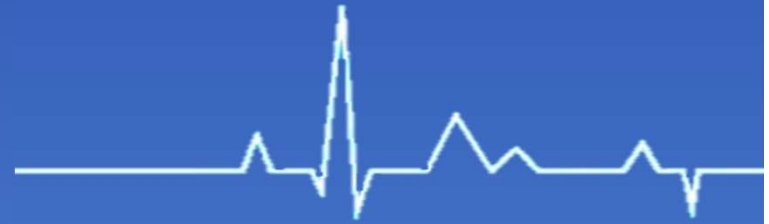
Shunting System



BMI® Medical

Lumbar Catheters 06418

Lumboperitoneal Shunt is designed for the diversion of CSF from the lumbar subarachnoid space into the peritoneal cavity using simplified surgical techniques.
Lumbar Catheter, 80 cm, Barium Impregnated.



Included with product

Lumbar Catheter, Barium Impregnated

I.D.: 0.7mm

O.D.: 1.5mm

Length: 30~80cm

Tuohy Needle, 14-gauge, 9cm with Huber Tip

1ea. Luer Lock Cap

1ea. Blunt needle

2ea. Fixation tab