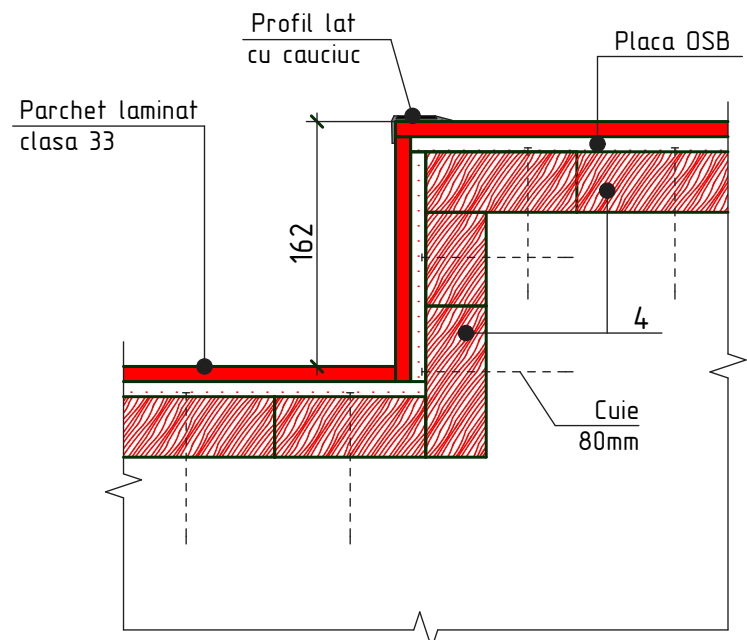
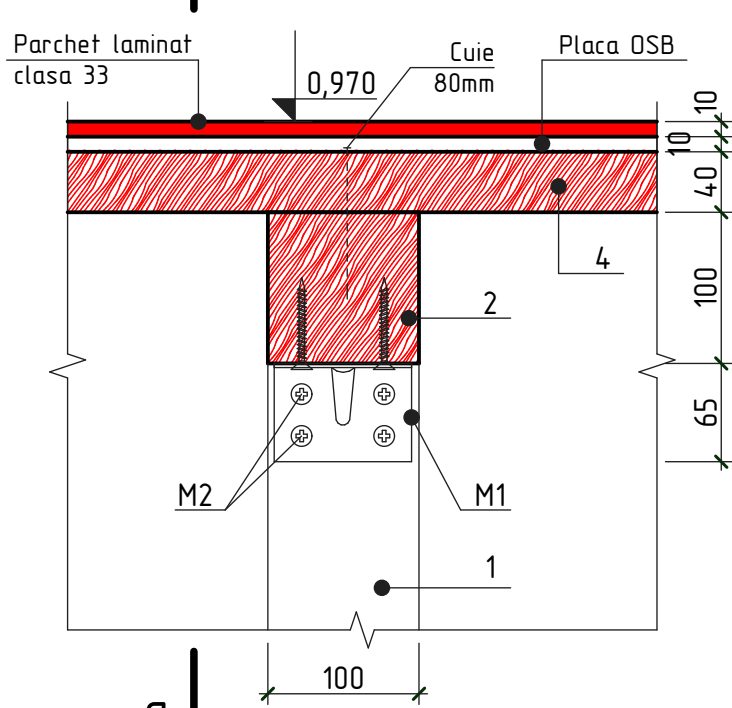


Nr.inve.a.orig. Data si semnatura Nr.inve.schim.

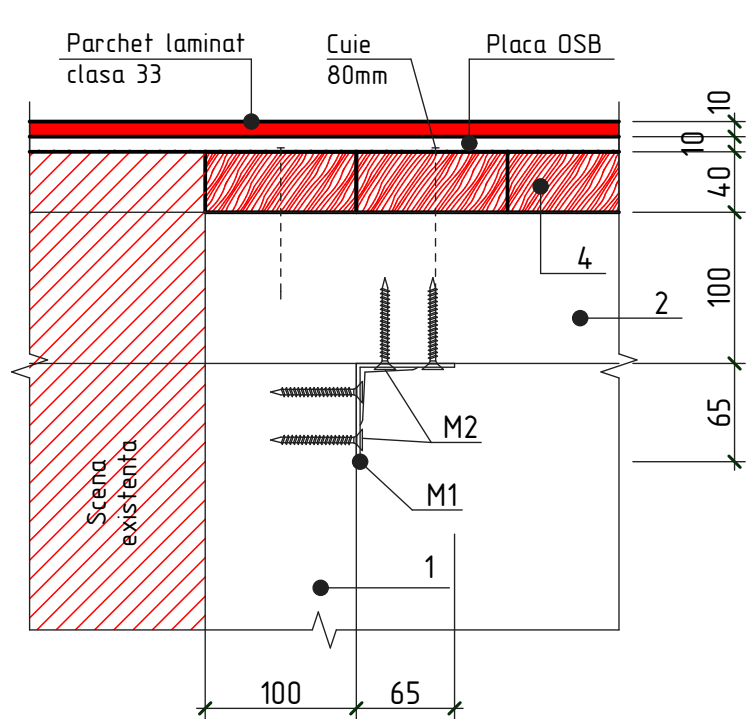
Nod I



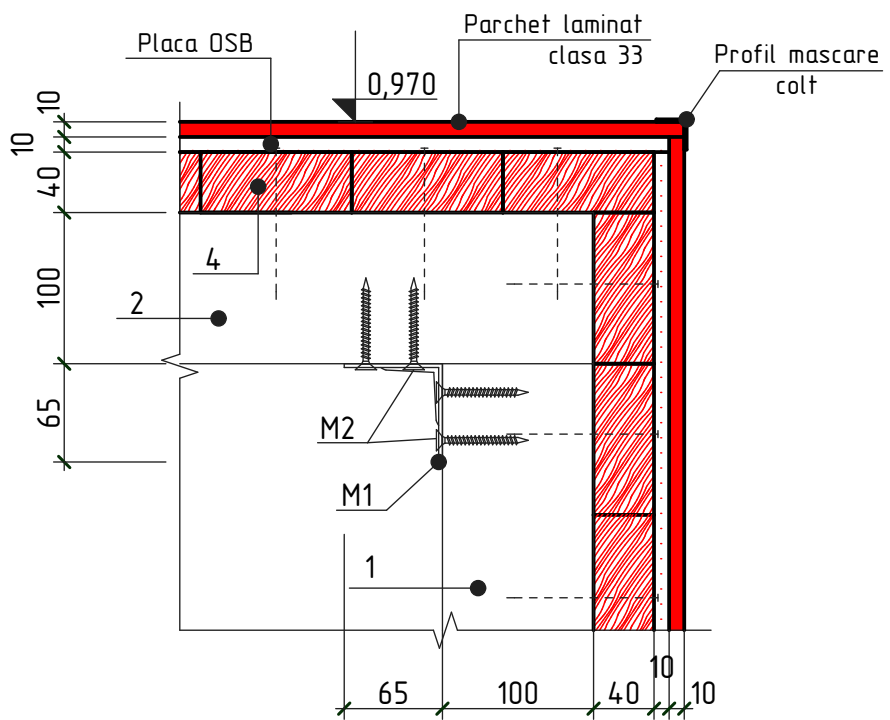
Nod II



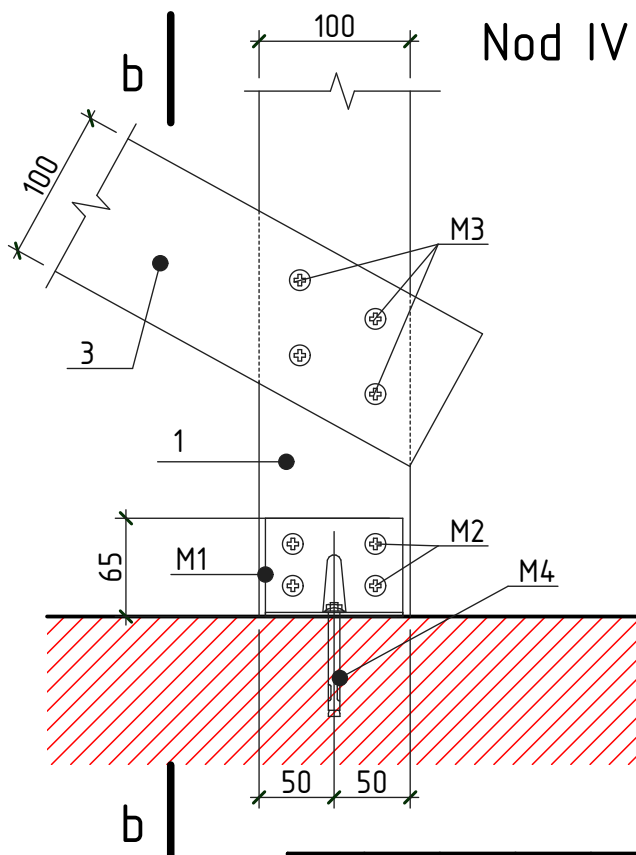
a-a



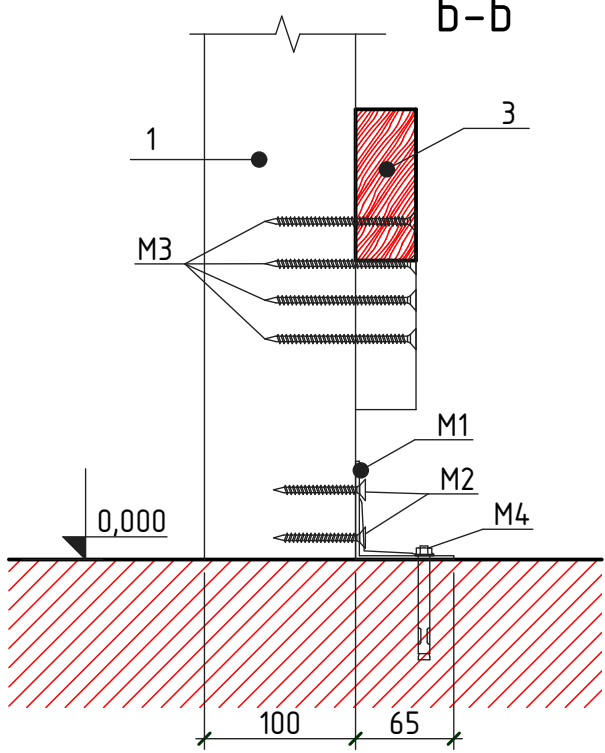
Nod III



Nod IV



b-b



1. Plansa data se citeste cu planșa - 13.

						OBIECTIV NR. - 14.05-D/21-1-SAC			
						Amenajarea teritoriului si reparatia capitala a incaperilor separate Liceul Teoretic "L.Blaga" din str. Alexandr Puskin nr. 69, mun. Balti			
Mod.	Can.	Foaia	Nr.d.	Semnat.	Data	Reparatie capitala	faza	planșa	planse
ASP		Mihaila V.			05.21		PE	14	
ISP		Hihlat E.			05.21				
Elaborat		Ciobanu V.			05.21	Nod I, II, III, IV; Sectiunea a-a, b-b		SRL "Geo-Cad-Proiect" mun. Balti	