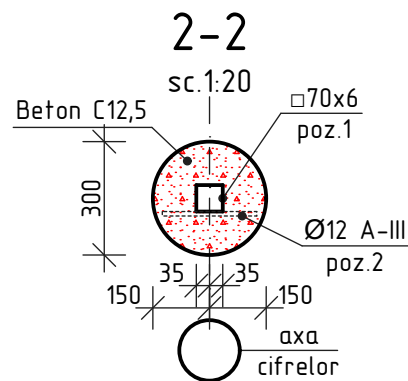
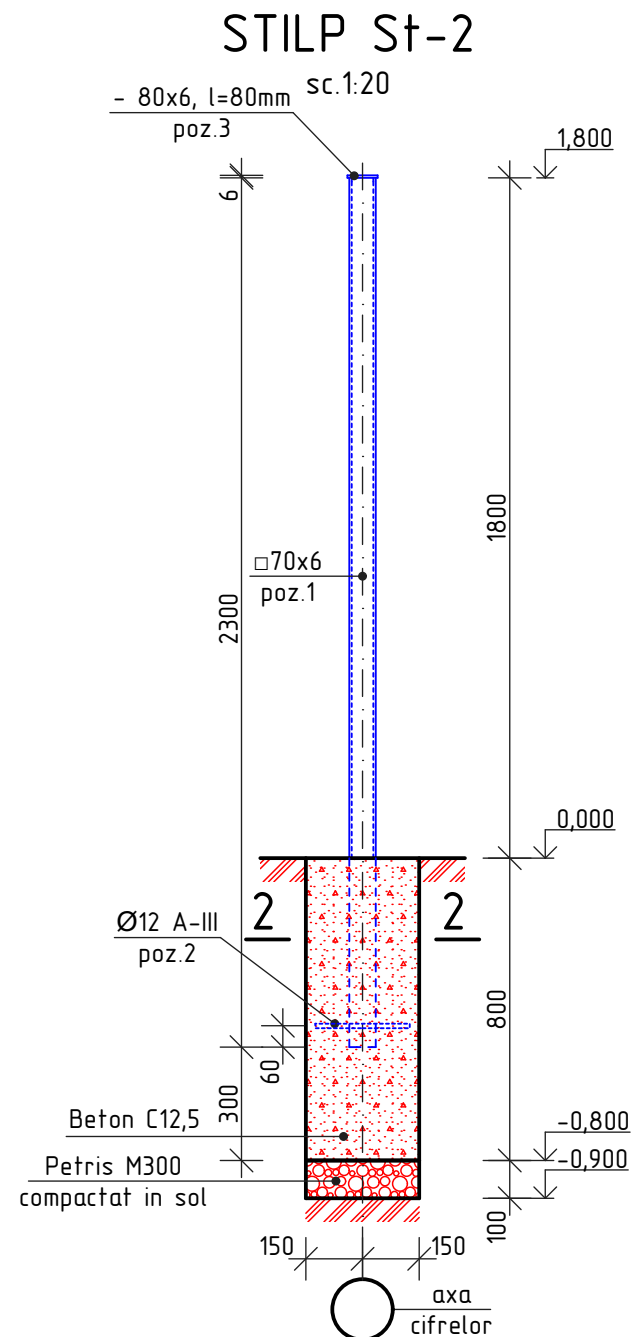
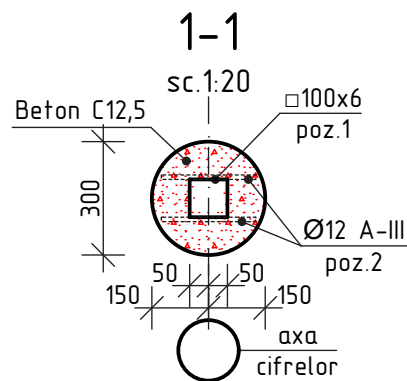
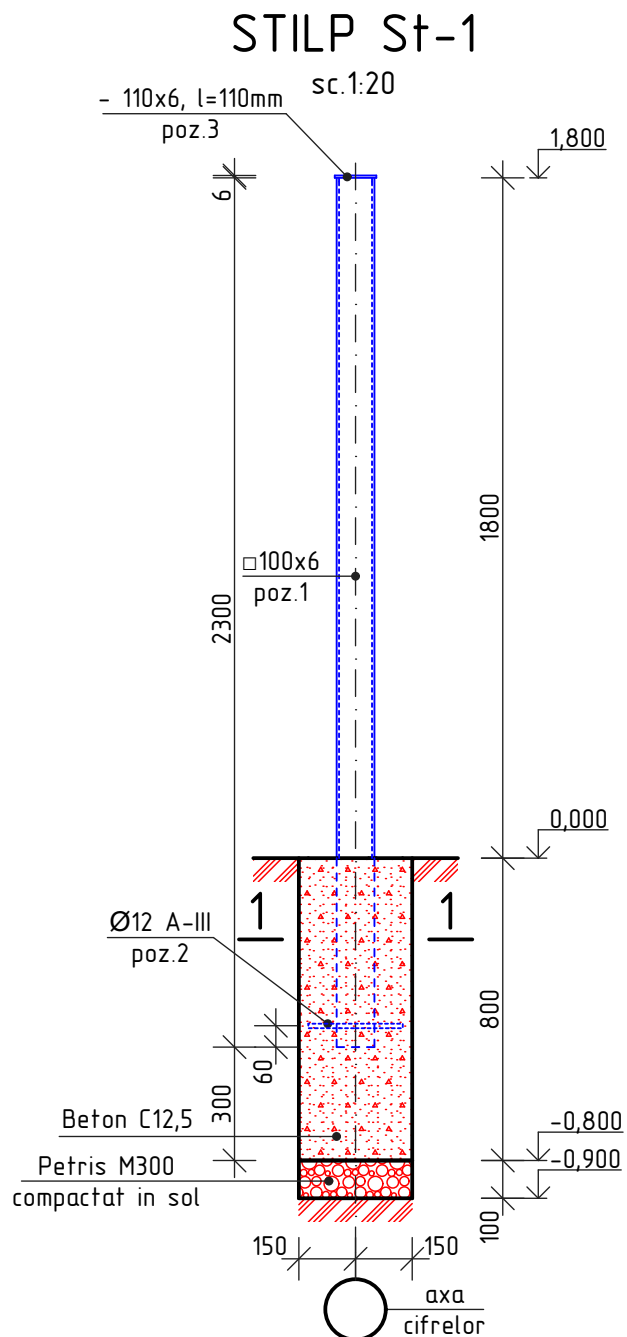


Nr.inve.a.orig. Data si semnatura Nr.inve.schim.



SPECIFICATIA MATERIALELOR

POZ.	DENUMIREA	CAN.	MASA UN., kg	NOTA
	Stilp St-1	8		
1	□100x6 ГОСТ 8636-82 l=2300mm	1	39,61	
2	Ø12 A-III ГОСТ 5781-82* l=250mm	2	0,222	0,444
3	- 110x6 ГОСТ 103-76 l=110mm	1	0,57	
	Beton C12,5	-	-	0,07m³
	Petris M300	-	-	0,01m³
	Stilp St-2	45		
1	□70x6 ГОСТ 8636-82 l=2300mm	1	26,61	
2	Ø12 A-III ГОСТ 5781-82* l=250mm	1	0,222	
3	- 70x6 ГОСТ 103-76 l=70mm	1	0,231	
	Beton C12,5	-	-	0,06m³
	Petris M300	-	-	0,01m³

						OBIECTIV NR. - 14.05-D/21-4-SAC			
						Amenajarea teritoriului si reparatia capitala a incaperilor separate Liceul Teoretic "L.Blaga" din str. Alexandr Puskin nr. 69, mun. Balti			
Mod.	Can.	Foia	Nr.d.	Semnat.	Data	Inprejmuire transparenta	faza	plansa	planse
ASP	Mihaila V.				05.21		PE	21	
ISP	Hihlat E.				05.21	Stilp St-1, St-2; Sectiunea 1-1, 2-2; Specificatia materialelor			
Elaborat	Ciobanu V.				05.21				
						SRL "Geo-Cad-Proiect" mun. Balti			