



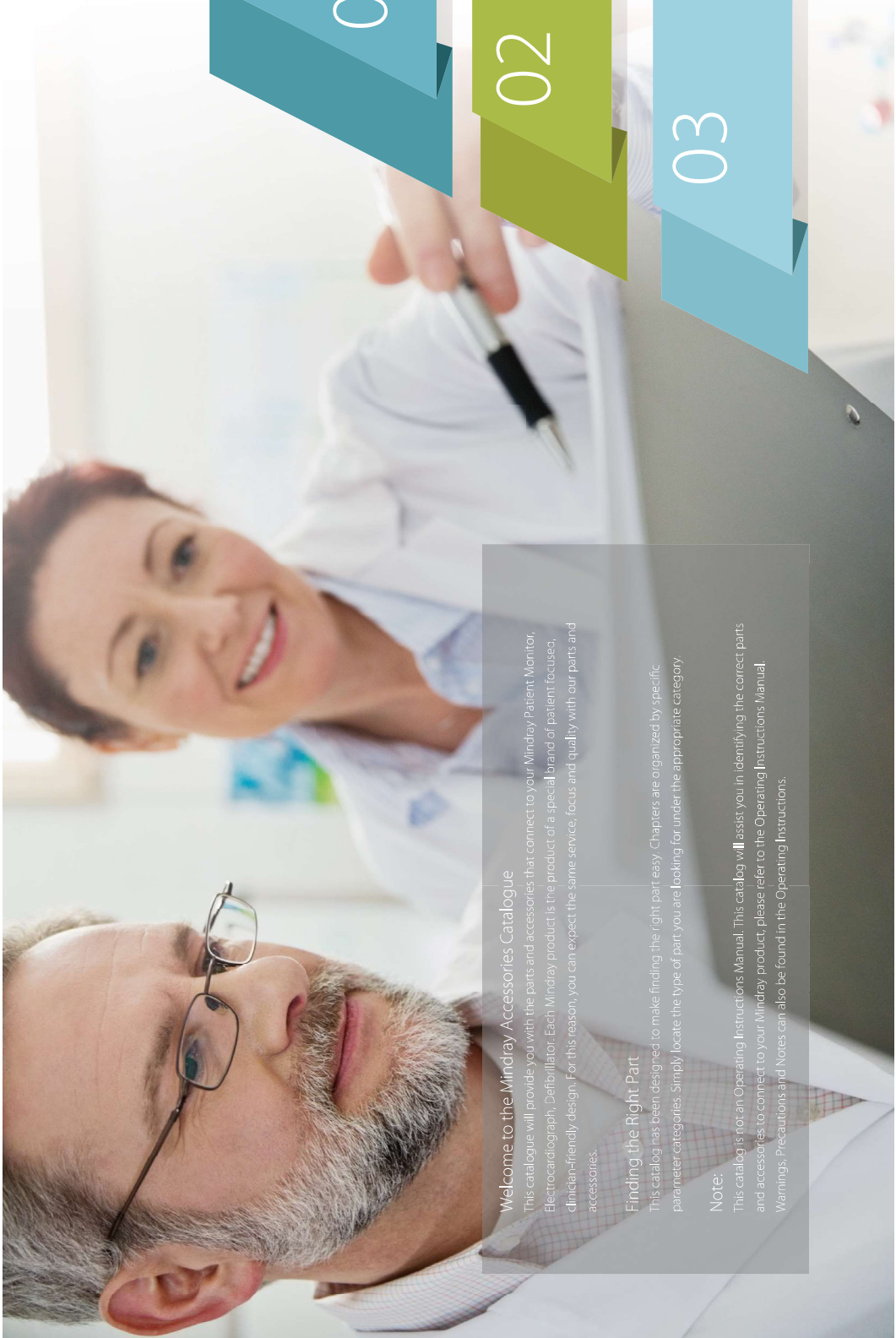
Accessories and Consumables

CATALOGUE 2022.07

www.mindray.com

P/NENG-Accessories and Consumables-Catalogue-2102142P-20220728
©2022 Shenzhen Mindray Bio-Medical Electronics Co., Ltd. All rights reserved.





Welcome to the Mindray Accessories Catalogue

This catalogue will provide you with the parts and accessories that connect to your Mindray Patient Monitor, Electrocardiograph, Defibrillator. Each Mindray product is the product of a special brand of patient focused, clinician-friendly design. For this reason, you can expect the same service, focus and quality with our parts and accessories.

Finding the Right Part

This catalog has been designed to make finding the right part easy. Chapters are organized by specific parameter categories. Simply locate the type of part you are looking for under the appropriate category.

Note:

This catalog is not an Operating Instructions Manual. This catalog will assist you in identifying the correct parts and accessories to connect to your Mindray product, please refer to the Operating Instructions Manual. Warnings, Precautions and Notes can also be found in the Operating Instructions.

Patient Monitor Accessories

| | |
|----------------------------|-----|
| ECG | 2 |
| SpO ₂ | 22 |
| NIBP | 36 |
| TEMP | 52 |
| CO | 61 |
| AG | 74 |
| ICP | 83 |
| RI | 84 |
| CI | 86 |
| ICG | 89 |
| BIS | 90 |
| PiCCO | 91 |
| CCO/ScO ₂ | 95 |
| EEG | 96 |
| ANI | 101 |
| NMT | 102 |
| SO ₂ Monitoring | 106 |
| Rolling Tables | 116 |
| Others | 118 |

01

Defibrillator Accessories





| | |
|--|-----|
| | 122 |
|--|-----|

02

Electrocardiograph Accessories



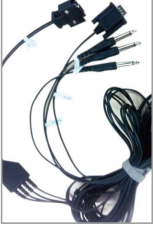


| | |
|--|-----|
| | 136 |
|--|-----|

03

| For BeneVision, BeneView, ePM, iPM, uMEC, iMEC series monitors, BeneHeart defibrillator | | | | |
|---|-------------|----------------------------------|----------------------------------|-----------------|
| Picture | Model | Part No. | No. Description | Purchasing Unit |
|  | 60-15200-00 | 115-043017-00 (9200-10-10533) | Sampling line, Adult/Ped, 2.5 m | 25 pcs/box |
|  | 60-15300-00 | 115-043018-00 (9200-10-10555) | Sampling line, Neo, 2.5 m | 25 pcs/box |
|  | 60-14100-00 | 115-043020-00 (9000-10-07486) | Dryline airway adapter, straight | 10 pcs/box |
|  | 60-14200-00 | 115-043021-00 (9000-10-07487) | Dryline airway adapter, elbow | 10 pcs/box |

| For BeneVision, BeneView, ePM, uMEC series monitors, BeneHeart defibrillator | | | | |
|---|---------|----------------------------------|---|-----------------|
| Picture | Model | Part No. | No. Description | Purchasing Unit |
|  | EA6231B | 115-043024-00 (100-000080-00) | M02C DRYLINE II water trap Adult/Ped for single-slot module | 10 pcs/box |
|  | EA6232B | 115-043025-00 (100-000081-00) | M02C DRYLINE II water trap Neo for single-slot module | 10 pcs/box |

Others

| Picture | Model | Part No. | No. Description | Purchasing Unit |
|---|-------|---------------|--|-----------------|
|  | | 009-003116-00 | Nurse call cable (for ePM, VS series) | Each |
|  | | 8000-21-10361 | Nurse call cable (for N series) | Each |
|  | | 009-003117-00 | Analog output cable (for ePM, IPM, uMEC, iMEC series) | Each |
|  | | 009-003118-00 | Derfib Sync cable (for ePM, IPM, uMEC, iMEC series) | Each |
|  | | A30-000001--- | Thermal Paper (50 mmX20 m) | Each |