

easy-foot
by ORTHO

SPEED



Fast foot
scanning

ACCURACY



High precision
scan

INSENSITIVITY



Totally insensitive
to ambient light

COMPLETION



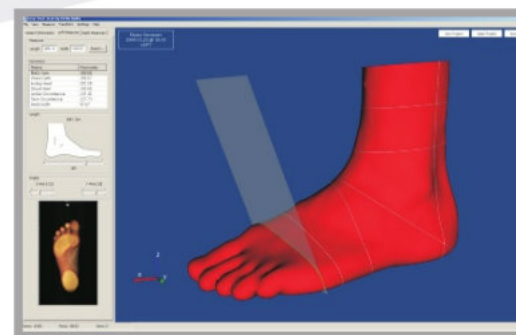
Output
at

EASY-FOOT-SCAN

- Fast data capture and processing
- 3D foot surface and 2D foot print is acquired in one scan
- High precision - max accuracy of 0.3 mm on any foot measurement
- Insensitivity to ambient light - foot stays open during the scan
- Report on 3D and 2D foot measurement information
- Scanning of feet, as well as shoe lasts, casting socks, foam imprints and blue
- Simple and user friendly interface, easy to set-up
- Compatibility with all major CAD/CAM systems



High accuracy in 3D image



Foot measurements available at any point



2D foot print in the same scan



Printed report on foot condition



TECHNICAL DATA:

- | | |
|------------------------|-----------------------------------|
| ▶ Scan dimensions: | ▶ 400 (L) x 200 (W) x 200 (H) mm |
| ▶ Accuracy (max): | ▶ $\pm 0,3$ mm |
| ▶ Scanning rate: | ▶ 5 sec (3D only), 10 sec (3D+2D) |
| ▶ Output format (3D): | ▶ ASC, PCL, WRL, OBJ, STL |
| ▶ Output format (2D): | ▶ BMP, JPG, ICO, EMF, WMF |
| ▶ Physical dimensions: | ▶ 777 (L) x 440 (W) x 493 (H) mm |
| ▶ Power supply: | ▶ 110-240 V 50/60 Hz |
| ▶ Power consumption: | ▶ 100 W |
| ▶ Weight: | ▶ 27 kg |

MINIMUM HOST COMPUTER REQUIREMENTS

- ▶ OS Windows XP or Windows 7
- ▶ CPU Pentium IV processor
- ▶ RAM 512 MB
- ▶ HDD 40 GB

A large, stylized graphic element consisting of a light gray curved shape with a dark blue curved line running through it, resembling a stylized 'S' or a wave. The text 'ORTHO BALTIC' is positioned within the light gray area.

ORTHO BALTIC

Baltic Orthoservice, UAB
Taikos Ave. 131A,
LT-51124 Kaunas, Lithuania
Tel. +370 37 473970
Fax +370 37 473863
e-mail: info@orthobaltic.lt
www.orthobaltic.eu