

ZW-G700/500

Technique specification



- ◆ New optical lens with no dazzling, excellent light efficiency
- ◆ New Function: brightness gesture sensor, wireless remote control
- ◆ Easy adjustment for color temperature and brightness, light spot uniform adjustment
- ◆ Full HD built-in/external camera system, Adjustable spot diameter and camera scene
- ◆ Easy to use color temperature and brightness adjustment, uniform adjustable spot control
- ◆ High efficient and durable OSRAM LED light source with average lifespan over 50,000 hours

Three lighting modes

Three Lighting Mode suit for various operation with different lighting requirement



Standard mode

In this mode, surgical light can adjust brightness according to requirement, suit for general surgery.



Endoscope Mode

In this mode, high color temperature can not be adjustable, suit for minor surgery like endoscope surgery .

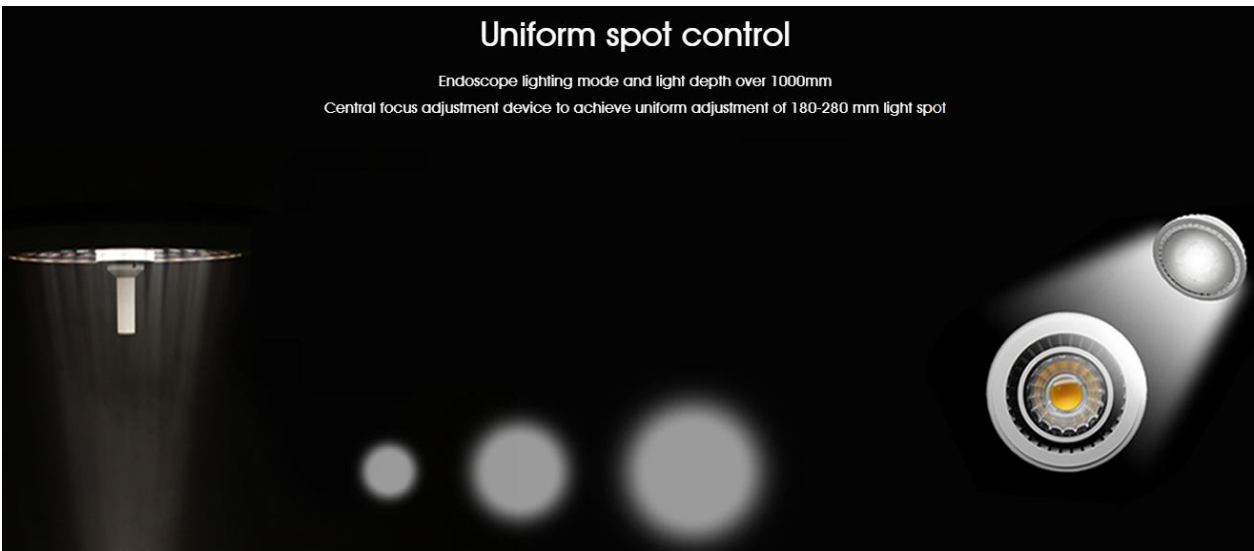


Low Light Mode

This mode can be used for small operations with low brightness requirements, and is suitable for pet hospitals, beauty salons and other places (knob controller does not have this mode).

Uniform spot control

Endoscope lighting mode and light depth over 1000mm
Central focus adjustment device to achieve uniform adjustment of 180-280 mm light spot

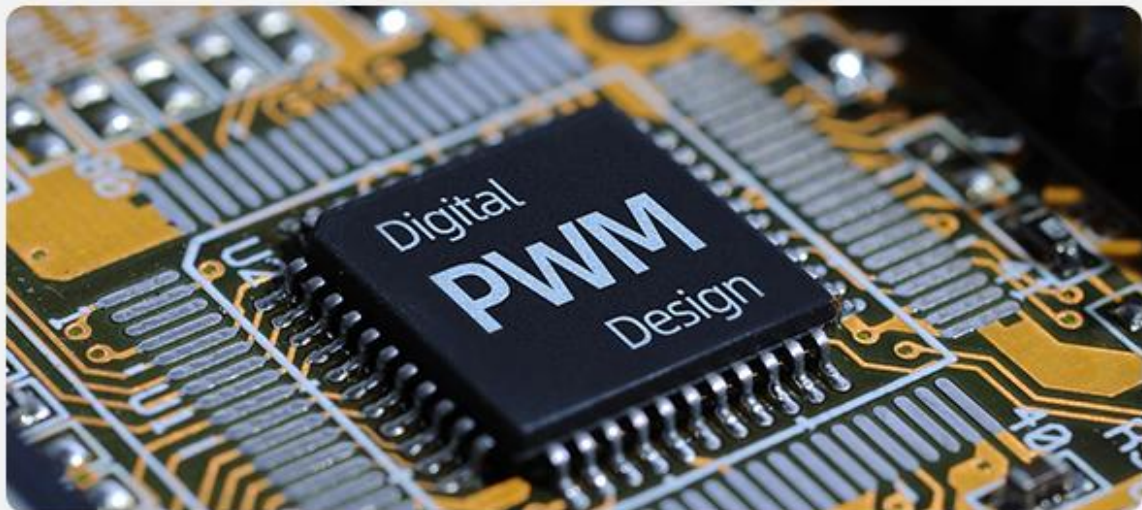


Color Temperature Easy Adjustment

Color rendering index ≥ 90 , near to real color as soon as possible

Stepless PWM dimming to satisfy brightness requirement for different surgery

High color temperature can improve the visual resolution of tissue, and low color temperature can relieve the visual fatigue caused by long-term surgery



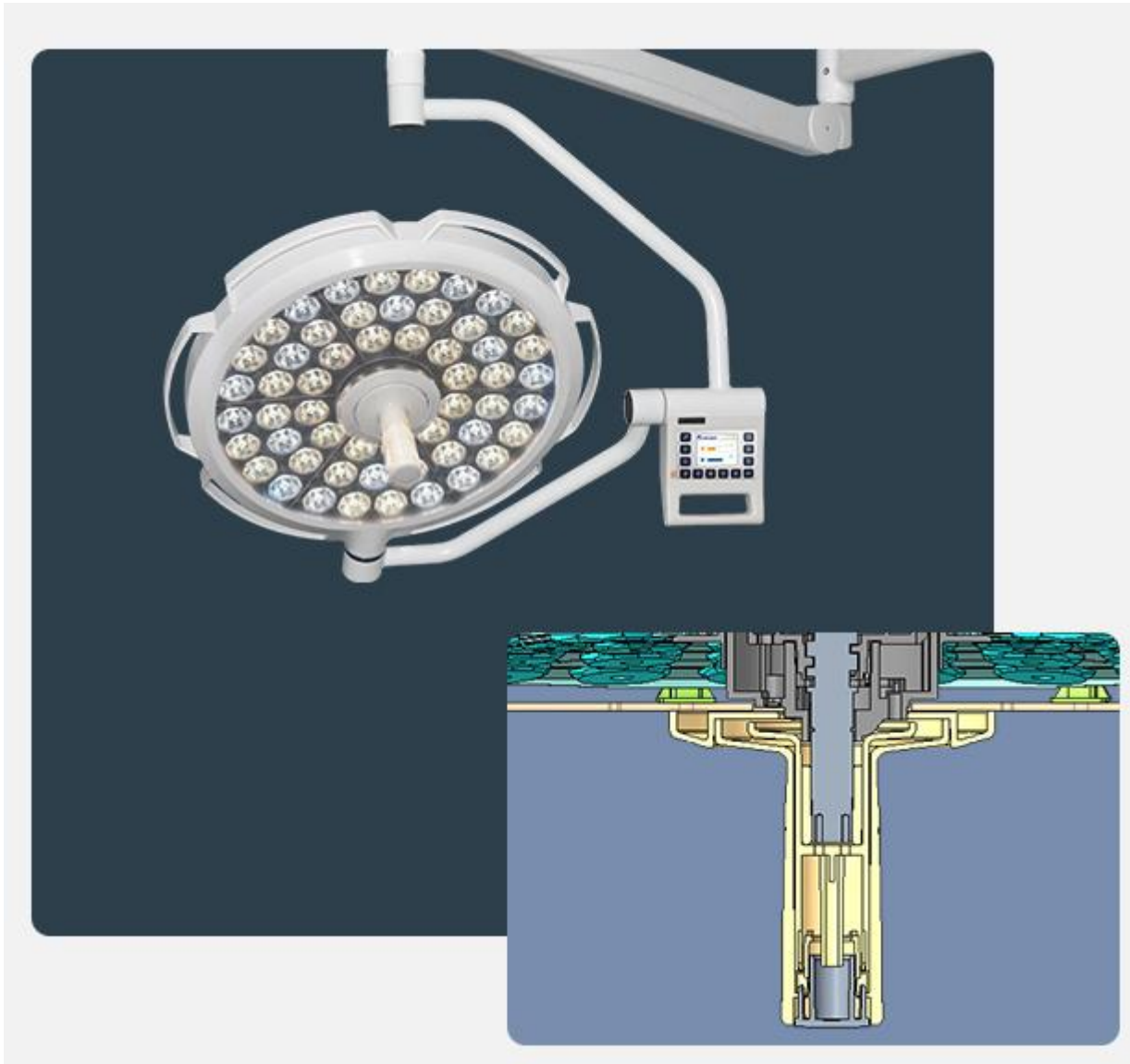
High color temperature



Low color temperature

Adjustable light field by central handle

Diversified control, the handle can control light field size, convenient and quick



Synchronous function

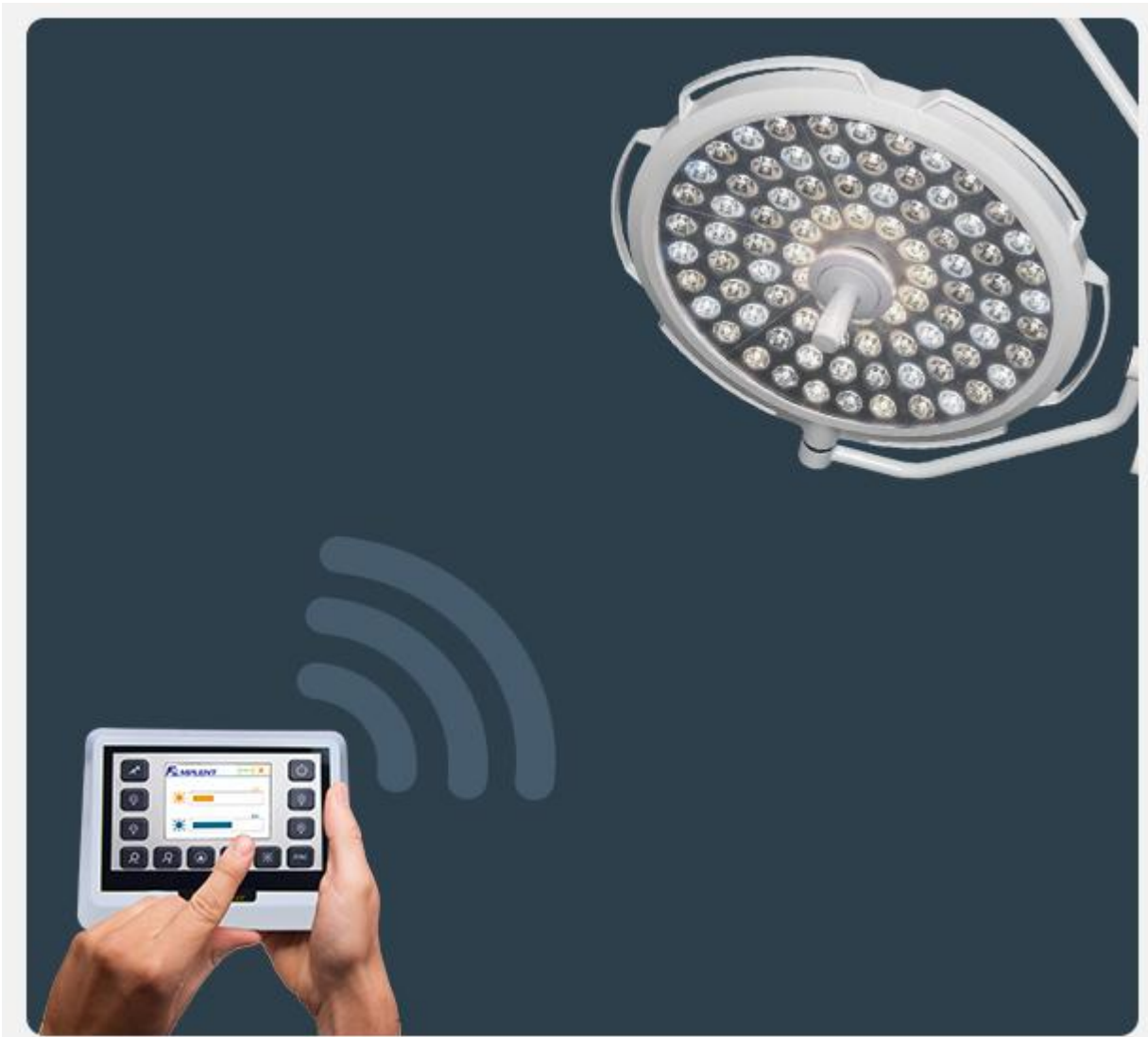
Operate any controller, and the main and auxiliary lights change at the same time



Optional Handheld Wireless Remote Controller

Using LoRa modulation technology, encryption wireless transmission, safe and reliable

Transmission distance is not less than 20meters, it can realize remote control with surgical light



Optional Full HD Built-in Camera / External Camera System

PWM technology, perfectly solving stroboscopic problem of the camera system

Remote consultation, remote teaching, large-screen conference, etc. can be realized via the Internet



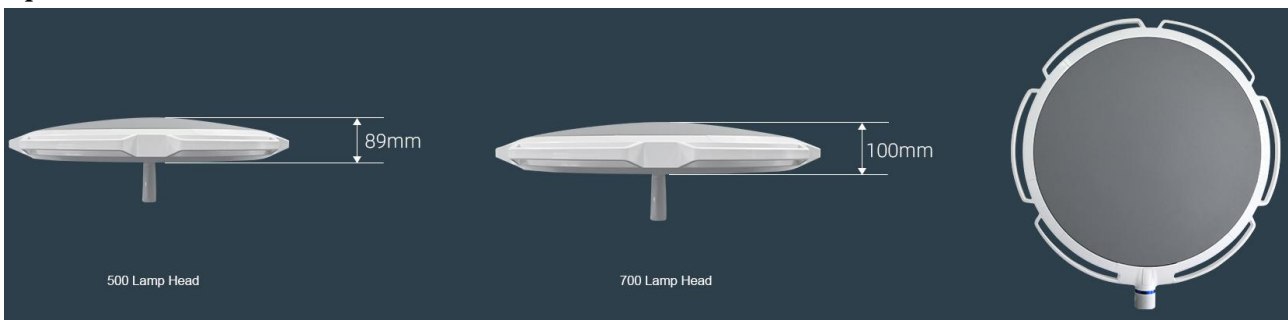
New Optical Diamond Lens

PMMA optical lens with unique lighting collecting technology, which can improve the light efficiency, reduce power consumption and reduce glare



Ultra Thin Lamp Head Design

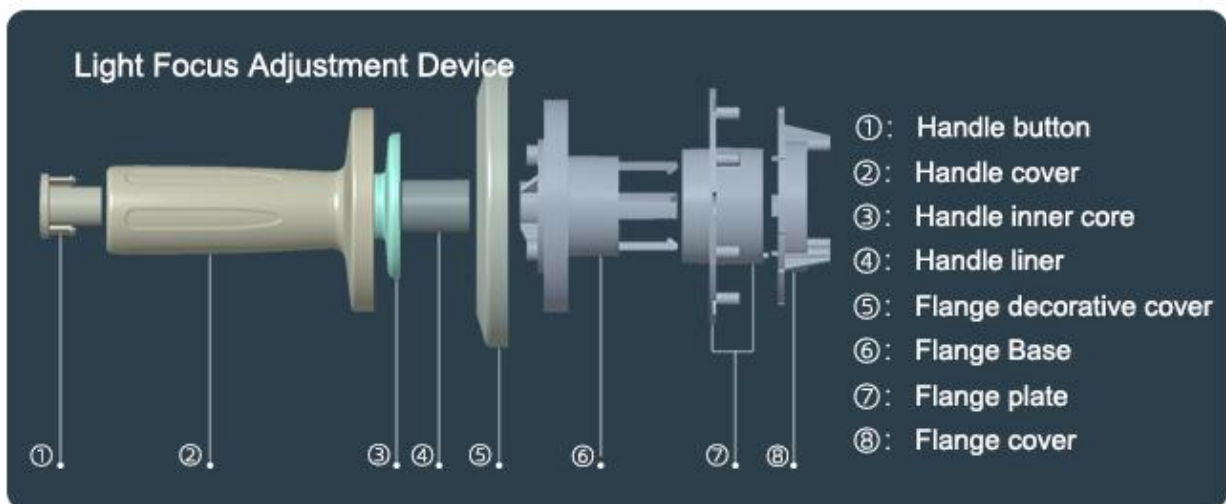
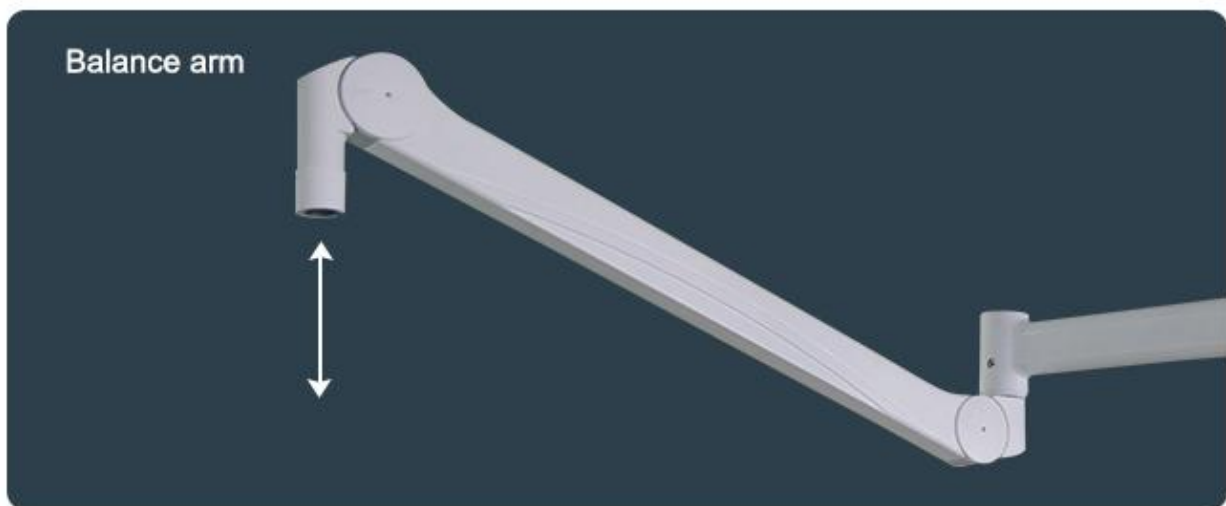
Ultra Thin Streamlined Lamp Head with 6-position circle handle, more easy operation



Stable Structure, Easy Install and Usage

Adjusted with removable sterilizer handle with bear 134°C

Balance arm of surgical light with square arm, lamp head can be pulled down vertically, and easy to rotate and adjust



ZW-G700/500

LED Surgical Light Parameter

Type	ZW-G700/500
Supply voltage	AC110-240V 50/60HZ
Spot diameter	180-280mm (adjustable)
luminance	700 Lamp Head 40000-160000Lx 500 Lamp Head 40000-120000Lx
Color temperature	4000-5000k (adjustable)
Color rendering index	≥95% (adjustable)
ILLumination depth	700 Lamp Head ≥1200mm 500 Lamp Head ≥1300mm
Brightness Adjustment	100 steps
LED Lifespan	≥50000h
LED Quantity	700 lamp head: 84pcs 500mm lamp head: 54pcs
LED lamp brand	OSRAM
Maximum LED Power	Rated 3W, actual use ≤ 1W

