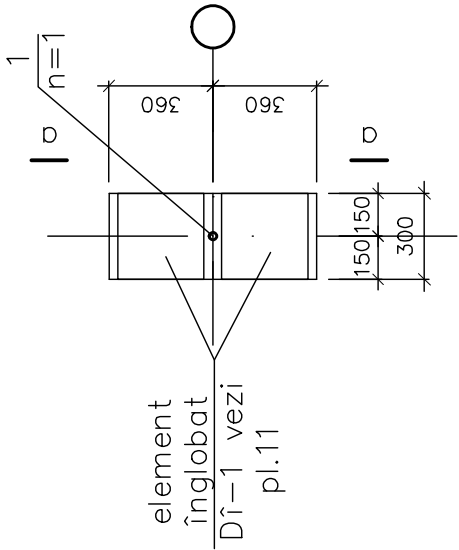
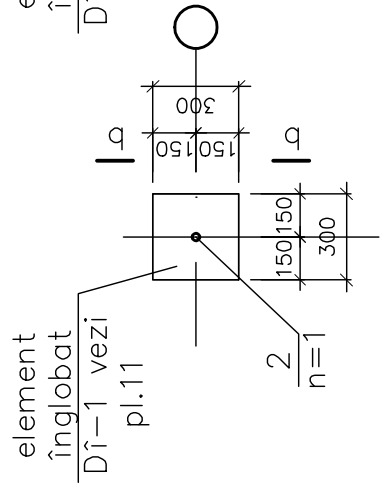


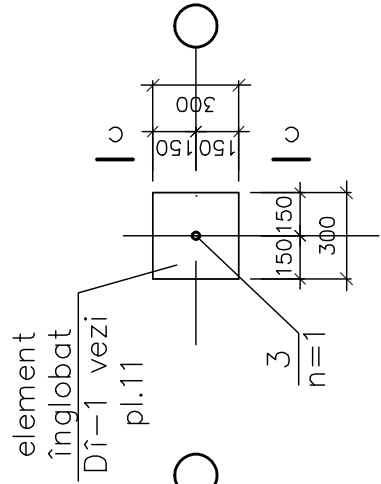
Stilp monolit Stm-1.
(n=8 buc.)



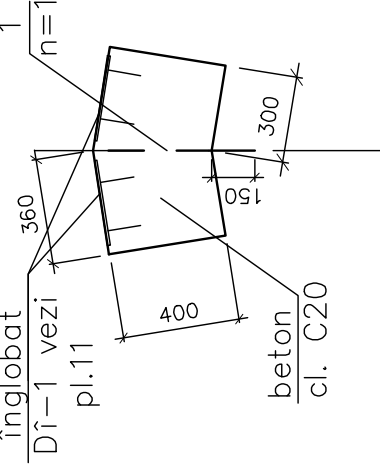
Stilp monolit Stm-2.
(n=16 buc.)



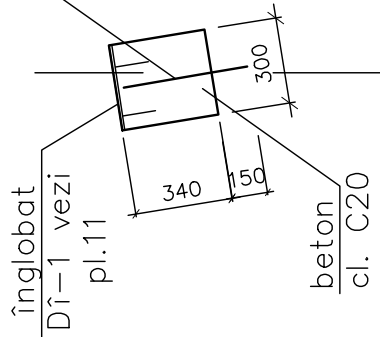
Stilp monolit Stm-3.
(n=17 buc.)



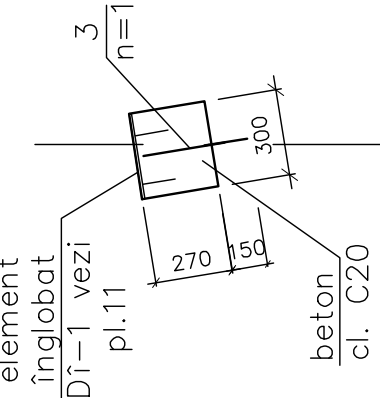
element înglobat Dî-1 vezi pl.11



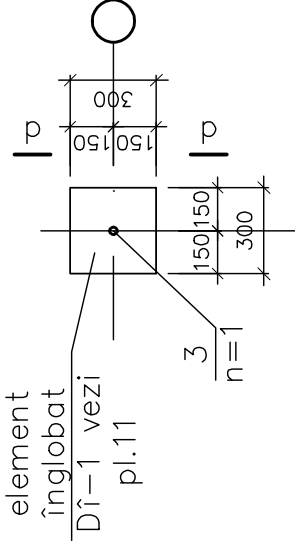
element înglobat Dî-1 vezi pl.11



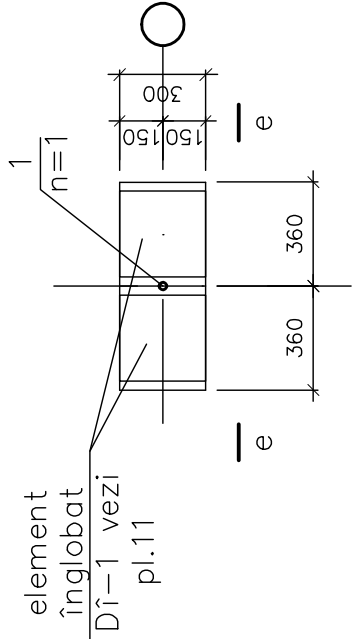
element înglobat Dî-1 vezi pl.11



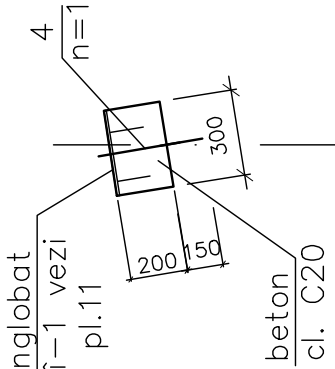
Stilp monolit Stm-4.
(n=22 buc.)



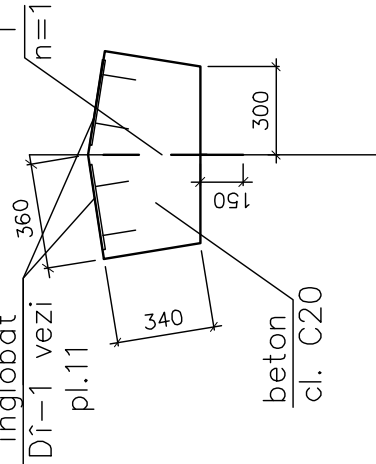
Stilp monolit Stm-5.
(n=1 buc.)



element înglobat Dî-1 vezi pl.11



element înglobat Dî-1 vezi pl.11



SPECIFICAȚIA MATERIALELOR

Marcarea	Denumirea	buc.	Masa un. kg.	Notă
	Stilp monolit Stm-1(n=8)			
1	Stilp monolit Stm-1(n=8)	1	0,50	0,50kg
	Beton clasa C20	0,08		m.c.
	Stilp monolit Stm-2(n=16)			
2	Stilp monolit Stm-2(n=16)	1	0,41	0,41kg
	Beton clasa C20	0,03		m.c.
	Stilp monolit Stm-3(n=17)			
3	Stilp monolit Stm-3(n=17)	1	0,33	0,33 kg
	Beton clasa C20	0,02		m.c.
	Stilp monolit Stm-4(n=22)			
4	Stilp monolit Stm-4(n=22)	1	0,24	0,24 kg
	Beton clasa C20	0,02		m.c.
	Stilp monolit Stm-5(n=1)			
5	Stilp monolit Stm-5(n=1)	1	0,41	0,41kg
	Beton clasa C20	0,08		m.c.

Notă

1. Lucrările de betonare se vor executa în conformitate cu NCM F.02.03-2005 "Executarea, controlul calității și recepția lucrărilor din beton și beton armat monolit".
2. Planșa dată se citește cu planșele nr.9, 11.

2015	0.06-D/15-SA	Reparatia capitala a acoperisului gimnaziului nr.7 din mun.Balti
A.Ș.P.	Mihaila V.	06.15
I.Ș.P.	Hihlat Em.	06.15
Elaborat	Hihlat Em.	06.15
	Gimnaziul nr.7.	Faza Planșă Planșe
	Stilp monolit Stm1...Stm-5.	PE 10
		SRL "Geo - Cad-Proiect"