



# USER MANUAL

## Power supply unit

This product is only computer's power supply

CopyRight @2024.09

### 1. SAFETY INSTRUCTIONS & DISCLAIMER

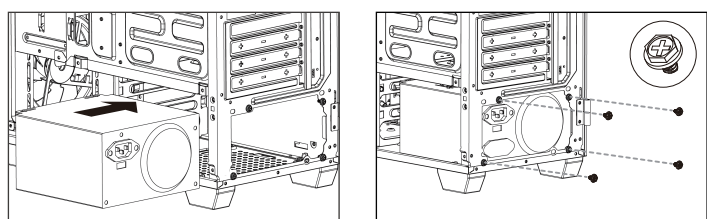
- Please install the power supply following the instructions and installation guide. Incorrect installation may result in damage to the power supply or system components which may lead to serious injury.
- Unauthorized non-professionals are strictly prohibited from disassembling the power supply.
- Only use the supplied cable or the original cable of the corresponding model purchased directly from the GAMEMAX official store. Using incorrect cables may cause product disfunction which may lead to fire and damage. Likewise, if the power supply needs to connect to modular cables, use only cables that are specifically designed to be compatible with your specific power supply model. Using other cables may not be compatible with the leads and may result in serious damage to the system and power supply.
- Do not place this product close to any source of heat such as radiators, heater holes.
- Keep the interior of the PC Case clean and maintain appropriate heat dissipation condition for the power supply.
- It is not recommended to overload the power supply.
- Use power strips that meet safety standards to avoid short circuits.
- This power supply can only be used to power the PC, and it is not suitable to use for other purposes.
- To ensure the stable operation of the PC system and the maximum service life of the power supply, please be clear about the power required by your PC and other accessories in advance. It is recommended to reserve 15-20% of the power margin for the selected power supply, which should not be lower than the power recommended by the official accessories.



1

### 2. HOW TO INSTALL?

- 1) Remove the power supply from its packaging.
- 2) Use the screws provided with your case to install the power supply into your computer.  
NOTE: It is recommended to install the power supply with the fan facing down. However, if your case places the power supply at the bottom of the case and there are no ventilation holes available, it may be best to install the power supply with the fan facing up for greater efficiency and reliability.

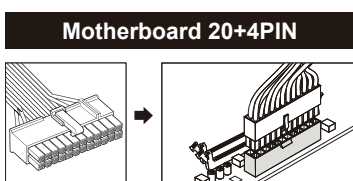


2

### 3. CONNECTOR DESCRIPTION

- 1) Connect 20+4-pin connector to the motherboard.

[Note] The detachable 4-pin connector of the 20+4-pin is not suitable for ATX12V 4-pin connector. Incorrect connection may cause irreversible damage.



PIN	13	14	15	16	17	18	19	20	21	22	23	24
	+3.3V	-12V	COM	PS-ON	COM	COM	COM	---	+5V	+5V	COM	

PIN13												
PIN1												PIN24
												PIN12

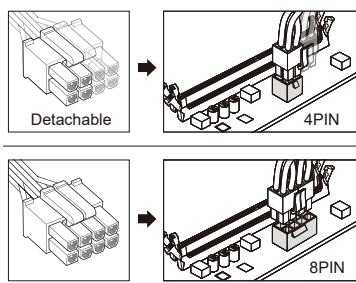
  

PIN	1	2	3	4	5	6	7	8	9	10	11	12
	+3.3V	+3.3V	COM	-5V	COM	+5V	COM	P.G.	+5VSB	+12V	+12V	+3.3V

3

- 2) Connect ATX12V (CPU power) 4-pin or 8-pin (by 4+4-pin) to the motherboard.

#### ATX12V 4/8-PIN (by 4+4-PIN)



PIN	5	6	7	8
	+12V	+12V	+12V	+12V

PIN5					PIN8
PIN1					PIN4

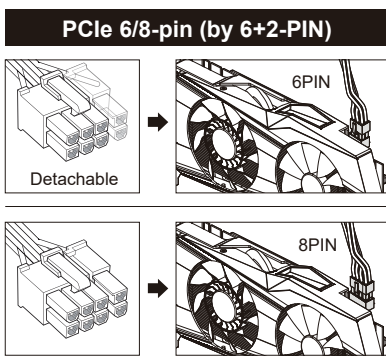
  

PIN	1	2	3	4
	COM	COM	COM	COM

4

- 3) Connect PCIe 6-pin or 8-pin (by 6+2-pin) to graphics card.

[Note] Do not connect the PCIe 6+2-pin connector to the ATX12V 8-pin connector. Incorrect connection may cause irreversible damage.



PIN	5	6	7	8
	COM	COM	COM	COM

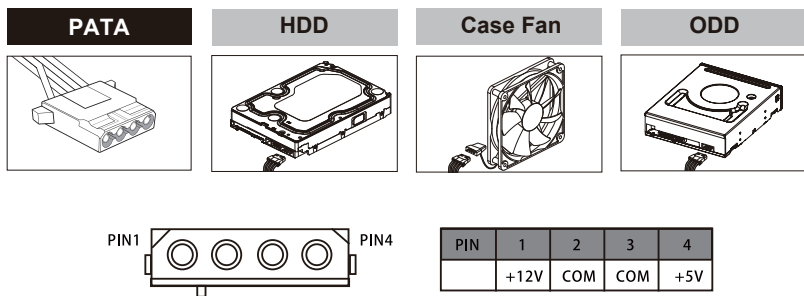
PIN5					PIN8
PIN1					PIN4

PIN	1	2	3	4
	+12V	+12V	+12V	COM

5

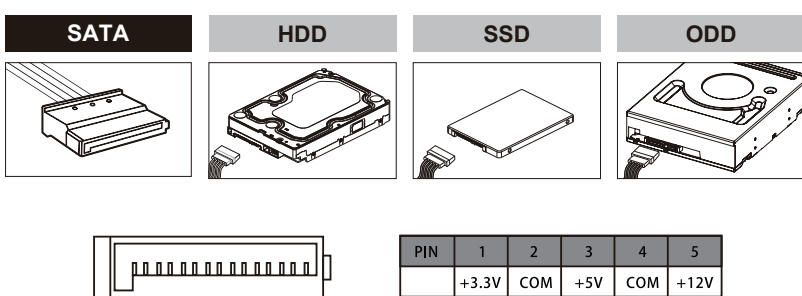
- 4) Connect Molex 4-pin connector to devices, i.e. HDD/ODD/case fan.



PIN	1	2	3	4
	+12V	COM	COM	+5V

6

- 5) Connect SATA connector to devices, i.e. HDD/SSD/ODD.



PIN	1	2	3	4	5
	+3.3V	COM	+5V	COM	+12V

7

### 4. AC INPUT AND DC OUTPUT SPECIFICATION

#### GM SERIES

AC INPUT CHARACTERISTICS							
100-240VAC 50-60Hz 15-5A							
DC OUTPUT CHARACTERISTICS							
MODEL	+3.3V	+5V	+12V	-12V	+5VSB	3.3/5V Max.Power	Total Power
GM-500	15A	15A	34A	0.5A	2.5A	100W	500W
GM-500G	20A	20A	40A	0.5A	2.5A	100W	500W
GM-600	18A	18A	40A	0.5A	2.5A	115W	600W
GM-600G	20A	20A	48A	0.5A	2.5A	100W	600W
GM-700	20A	20A	50A	0.5A	2.5A	120W	700W
GM-800	20A	20A	60A	0.5A	2.5A	130W	800W
GM-1050	20A	20A	76A	0.5A	2.5A	130W	1050W

#### GE SERIES

AC INPUT CHARACTERISTICS							
115/230VAC 8/4A 47/63Hz							
GE-500 / GE-600 / GE-700							
100-240VAC 50-60Hz 15-5A							
DC OUTPUT CHARACTERISTICS							
MODEL	+3.3V	+5V	+12V	-12V	+5VSB	3.3/5V Max.Power	Total Power
GE-450	15A	15A	28A	0.5A	2.5A	100W	450W

8

MODEL	+3.3V	+5V	+12V	-12V	+5VSB	3.3/5V Max.Power	Total Power
GE-500	15A	15A	34A	0.5A	2.5A	100W	500W
GE-600	18A	18A	40A	0.5A	2.5A	115W	600W
GE-700	20A	20A	50A	0.5A	2.5A	120W	700W

#### GP SERIES

AC INPUT CHARACTERISTICS							
100-240VAC 50-60Hz 15-5A							
DC OUTPUT CHARACTERISTICS							
MODEL	+3.3V	+5V	+12V	-12V	+5VSB	3.3/5V Max.Power	Total Power
GP-400A	15A	15A	24A	0.5A	2.5A	100W	400W
GP-450	15A	15A	28A	0.5A	2.5A	100W	450W
GP-500	15A	15A	34A	0.5A	2.5A	100W	500W
GP-500G	20A	20A	40A	0.5A	2.5A	100W	500W
GP-550	15A	15A	38A	0.5A	2.5A	100W	550W
GP-650	18A	18A	44A	0.5A	2.5A	120W	650W
GP-750	18A	18A	54A	0.5A	2.5A	115W	750W
GP-850	20A	20A	70A	0.5A	2.5A	130W	850W

9

#### ATX ECO SERIES

AC INPUT CHARACTERISTICS							
100-240VAC 50-60Hz 6-3A							
DC OUTPUT CHARACTERISTICS							
MODEL	+3.3V	+5V	+12V	-12V	+5VSB	3.3/5V Max.Power	Total Power
GM-300	15A	15A	20A	0.5A	2.5A	100W	300W

#### TFX SERIES

AC INPUT CHARACTERISTICS							
GT-230G/250G 100-240VAC 50-60Hz 5-2.5A GT-250 115/230VAC 50/60Hz 5/2.5A GT-275 115/230VAC 50/60Hz 5/3A GT-300G/300G 100-240VAC 50-60Hz 5-3A GT-350G/400G/450G/450P 100-240VAC 50-60Hz 8-4A							
DC OUTPUT CHARACTERISTICS							
MODEL	+3.3V	+5V	+12V	-12V	+5VSB	3.3/5V Max.Power	Total Power
GT-230G	13A	13A	14A	0.5A	2A	80W	230W
GT-250	15A	15A	14A	0.5A	2.5A	80W	250W
GT-250G	15A	15A	14A	0.5A	2.5A	80W	250W
GT-275	15A	15A	16A	0.5A	2A	80W	275W
GT-300	15A	15A	20A	0.5A	2.5A	100W	300W
GT-300G	15A	15A	20A	0.5A	2.5A	100W	300W
GT-350G	10A	10A	29A	0.3A	2.5A	60W	350W
GT-400G	12A	12A	33A	0.3A	2.5A	80W	400W
GT-450G	12A	12A	37.5A	0.3A	2.5A	80W	450W
GT-450P	12A	12A	37.5A	0.3A	2.5A	80W	450W

10

#### SFX SERIES

AC INPUT CHARACTERISTICS							
GS-250/GS-275 115/230VAC 5/2.5A 50/60Hz GS-300 100-240VAC 6-3A 50-60Hz GS-450 100-240VAC 7-3.5A 60-60Hz							
DC OUTPUT CHARACTERISTICS							
MODEL	+3.3V	+5V	+12V	-12V	+5VSB	3.3/5V Max.Power	Total Power
GS-250	13A	13A	14A	0.5A	2A	80W	250W
GS-275	15A	15A	16A	0.5A	2A	80W	275W
GS-300	15A	15A	20A	0.5A	2.5A	100W	300W
GS-450	15A	15A	28A	0.5A	2.5A	100W	450W

### 5. TROUBLE SHOOTING

If your PC system does not respond, please follow the instructions below:

- Ensure the AC power cord is connected tightly and the AC power switch is turned on.
- Ensure all DC output connectors are connected in the right direction and plugged in securely.
- Check whether there are any short-circuit problems or defective peripherals by unplugging all peripheral devices and plugging them back in one at a time.
- If one of the above mentioned steps reveals a problem, turn off the PSU and wait for 1-2 minutes. Then turn on the PSU again. This is necessary in order to release the latch condition of the protection circuit.
- If the PSU does not work properly after the above steps, please arrange to send it back to your place of purchase.

11



www.gamemaxpc.com

12

尺寸：130x80, 黑白印刷，封面封底过哑胶，钉装