

FDX Visionary-CS



FDX Visionay-CS is a **Single unit** powerful mobile fluoroscopy system, with very high image resolution in surgical applications.

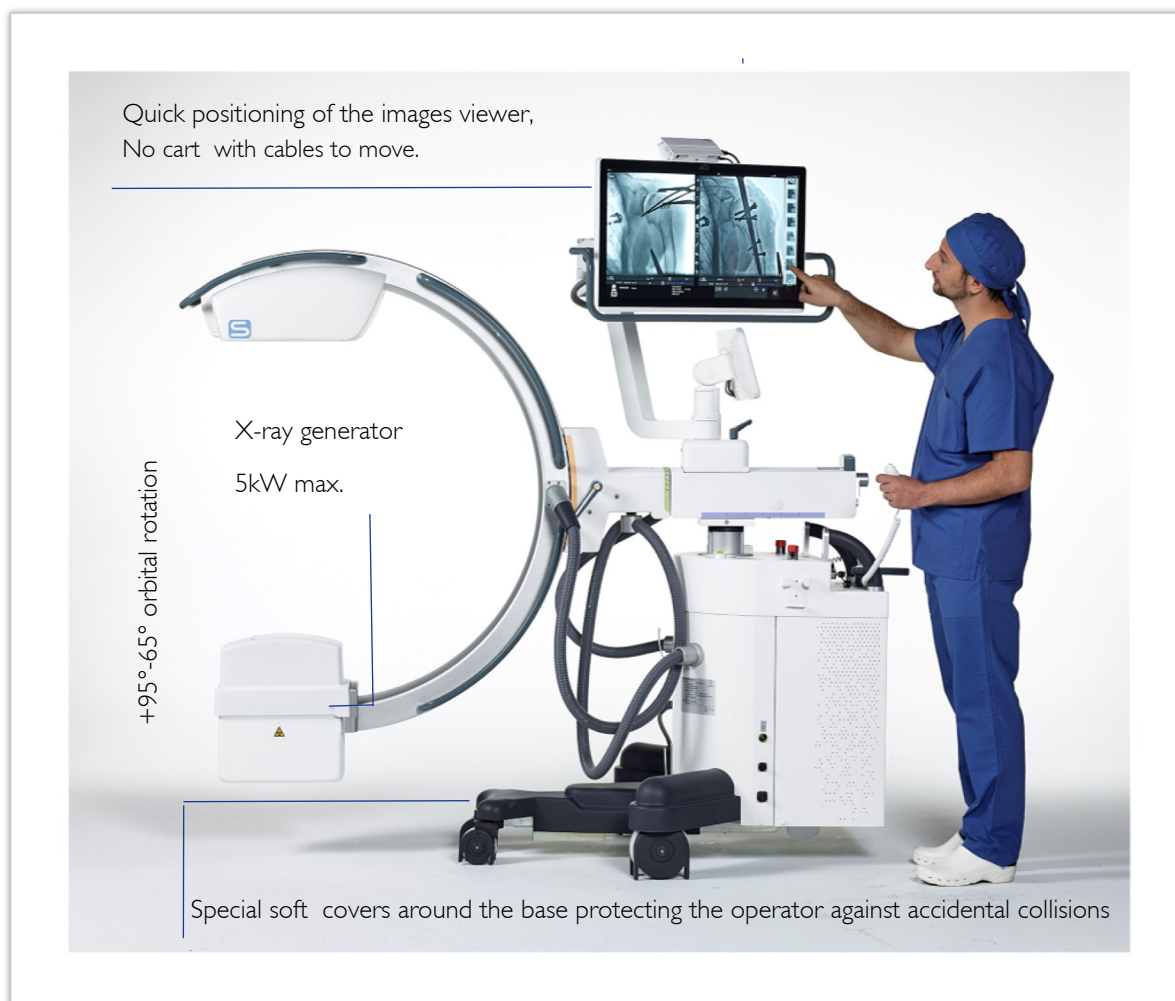


MAIN PROCEDURES

- Positioning of prosthesis and the installation of plates
- Fractures repairing in different anatomical regions
- Neuromodulation and laser nucleolysis
- E.R.C.P.
- Pace-Maker or catheters implant in thoracic regions
- Urology and histero
- Cerebral, thoracic and peripheral vascular using DSA function
- Pain therapy
- General intra-operative

ERGONOMIC

All-in-one unit, reduced footprint. Large C-arm depth for maximum accessibility, S.I.D. >108cm.
Smart operator console: all controls with multi-touch user interface, displaying live image.



Main features:

- Single unit system, all components are integrated in the C-arm stand without monitor cart.
- Very small footprint, ideal for OR with limited surface.
- 27", 4 Mpixel medical multi touch monitor on an articulating arm, height & angle adjustable; equivalent to 2x19" monitors, displaying simultaneously live and reference images.
- Removable grid for paediatric applications.
- Flat Panel with very high sensitivity.
- Full-touch "smart" user interface.
- Extended C-arm free space.
- Image free of distortion.

OPERATOR CONTROL PANEL

Main new features:

- Full-touch “smart” user interface
- Real-time image display
- Compact LED display & high performance professional PC
- Comfortable operator view at any positions



OPERATOR CONTROL PANEL

Smart user interface	Full touch operation , no keyboard and mouse
Technology	Multi-Touch , Colour 12,5" LCD panel
Application	Image live and full operator interface control
Console positioning	$\pm 135^\circ$ rotation
Display resolution	1920 x 1080pixels
Display useful area	276,5x157,5mm

FLAT PANEL DETECTOR UNIT

Main new features:

- Dynamic Flat Panel surgical dedicated
- High Resolution Fluoroscopy: 2,4lp/mm (for 2121DXV) and 2,6lp/mm (for 3030DXV)
- aSi & CsI Layers
- High Sensitivity
- Robust and compact



FLAT PANEL

Model	2121DXV	3030DXV
Receptor type	Amorphous silicon	Amorphous silicon
Conversion screen	Integral columnar CsI:Ti	Integral columnar CsI:Ti
Pixel pitch	205µm	194µm
DQE @ RQA5	0 lp/mm - 80% 2,0lp/mm - 40%	0 lp/mm - 80% 2,0lp/mm - 44%
MTF	1,0 lp/mm - 55% 2,0lp/mm - 22%	1,0 lp/mm - 55% 2,58lp/mm - 15%
A/D conversion	16 bits	16 bits
Useful area	209,9mm x 209,9mm	298mm x 298mm
Matrix	1024 x 1024 pixels	1536 x 1536 pixels
Max frame rate	30 FPS @ full resolution	30 FPS @ (2x2 binning)

LASER LOCALIZER

Operation	Cross light on flat panel and x-ray tube side
Laser diode power	< 5mW, I M Class
Wavelength	635nm

ANTISCATTERED X-RAY GRID

Special application (Paediatric)	Removable grid without use of tools
Material	Aluminium
Line rate	80 Lines/cm ratio 8:1
Focus Distance	100cm

VIEW STATION

- Very high brightness and contrast colour medical displays
- 27", 4Mpixel multi touch monitor, adjustable in height & angle
- 10 points multi-touch user interface
- Easy to clean without keyboard & mouse
- Reduced C-arm bulkiness
- DIN 6868-157 compliant



VIEW STATION

Smart user interface	Full touch operation , no keyboard and mouse
Technology	Multi-Touch Projected Capacity touch screen, LED backlight
Image quality	Ref. DIN 6868-157, Compliance DICOM room RC2-RC3
Application	Medical display, Clinical review monitor
Size, Resolution, viewing angle	Single 27" (2x19"equivalent), 2560x1440 pixels,178°(H/V)
Brightness	350Cd/m ² max
Contrast	Typ. 1000:1
Displays height	144-186 cm continuous adjustable
Displays rotation	±180° continuous adjustable

X-RAY GENERATOR

Main features:

- Smart power management to handle long procedures
- Controlled power X-Ray pulse for the best penetration and clear image



Model

ARCO FP-SR21/30

High frequency	40 kHz
Max Voltage	120 kV
Max mA in continuous fluoroscopy	5 mA
Max mA in pulsed fluoro	40 mA
Max mA in digital radiography	50 mA
Max power	5 kW
Thermal capacity	1020kj
Total filtration	3mmAl

X-RAY TUBE

Model	Rotating Anode
Focus	0,3mm / 0,6mm
Anode thermal capacity	225kj (314 kHU)
Anode continuous heat dissipation	750 W(60 kHU/min.)
Max heat dissipation	1300 W(104 kHU/min.)
Max anode load SF/LF	6 kW – 25 kW

X-RAY COLLIMATOR

Field	Motorized Square field, continuous adjustment
Blades	Motorized ,continuous rotating asymmetrically adjustable parallel shutters
Remote controlled Filters	No filter, 2mmAl , 1mmAl+0,1mmCu , 1mmAl+0,2mmCu

SUPPLEMENTARY WIRELESS VIEWSTATION



Power supply battery	Lithium polymers
Autonomy	More than 8 hours
WiFi transmitter and receiver	60GHz
Video	Full HD
Operative area	Ø10m in operating room
Conformity	Medical use in the operating room
Display	22" Full HD medical
Trolley	For medical use

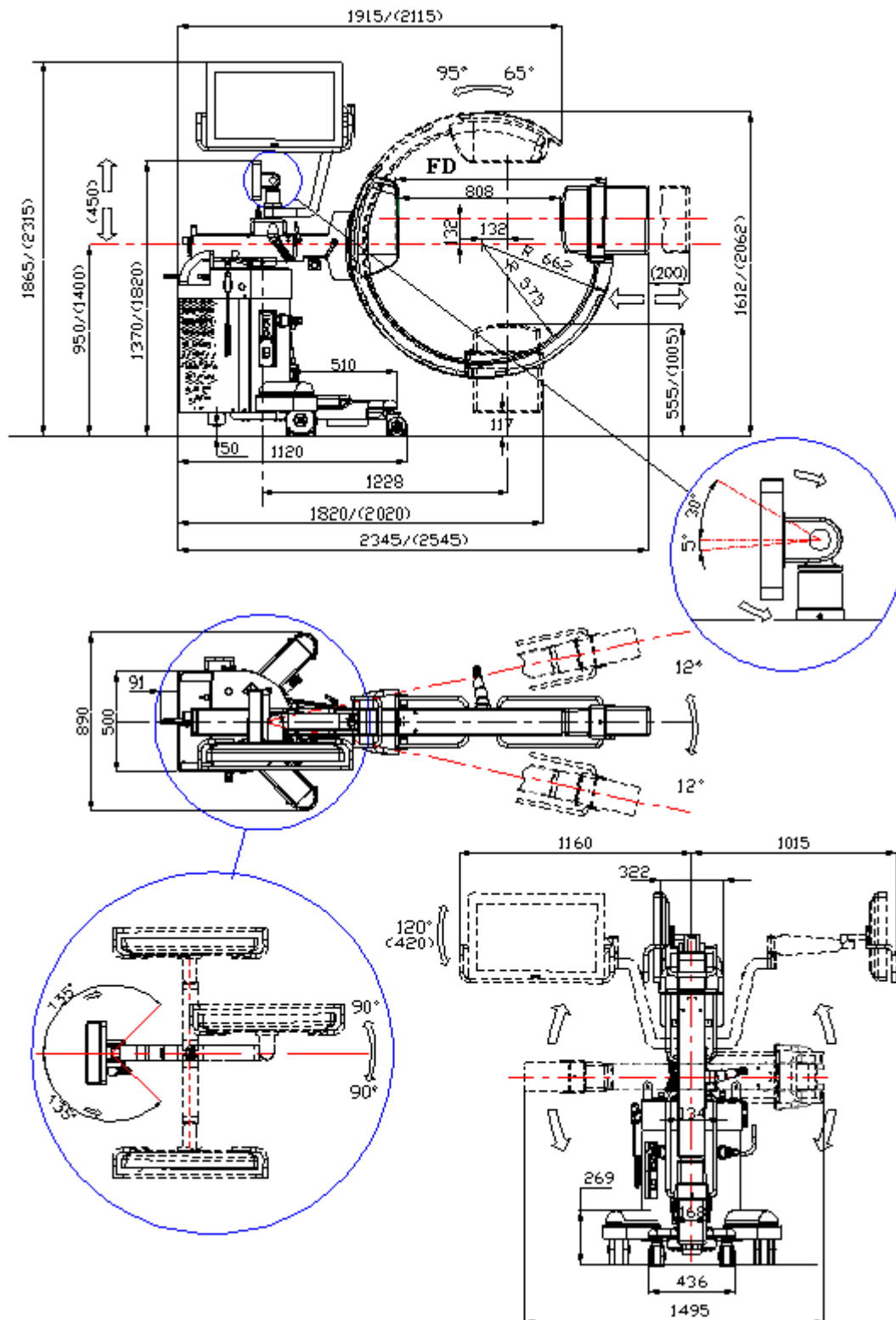
PRINTER

Digital thermal medical printer

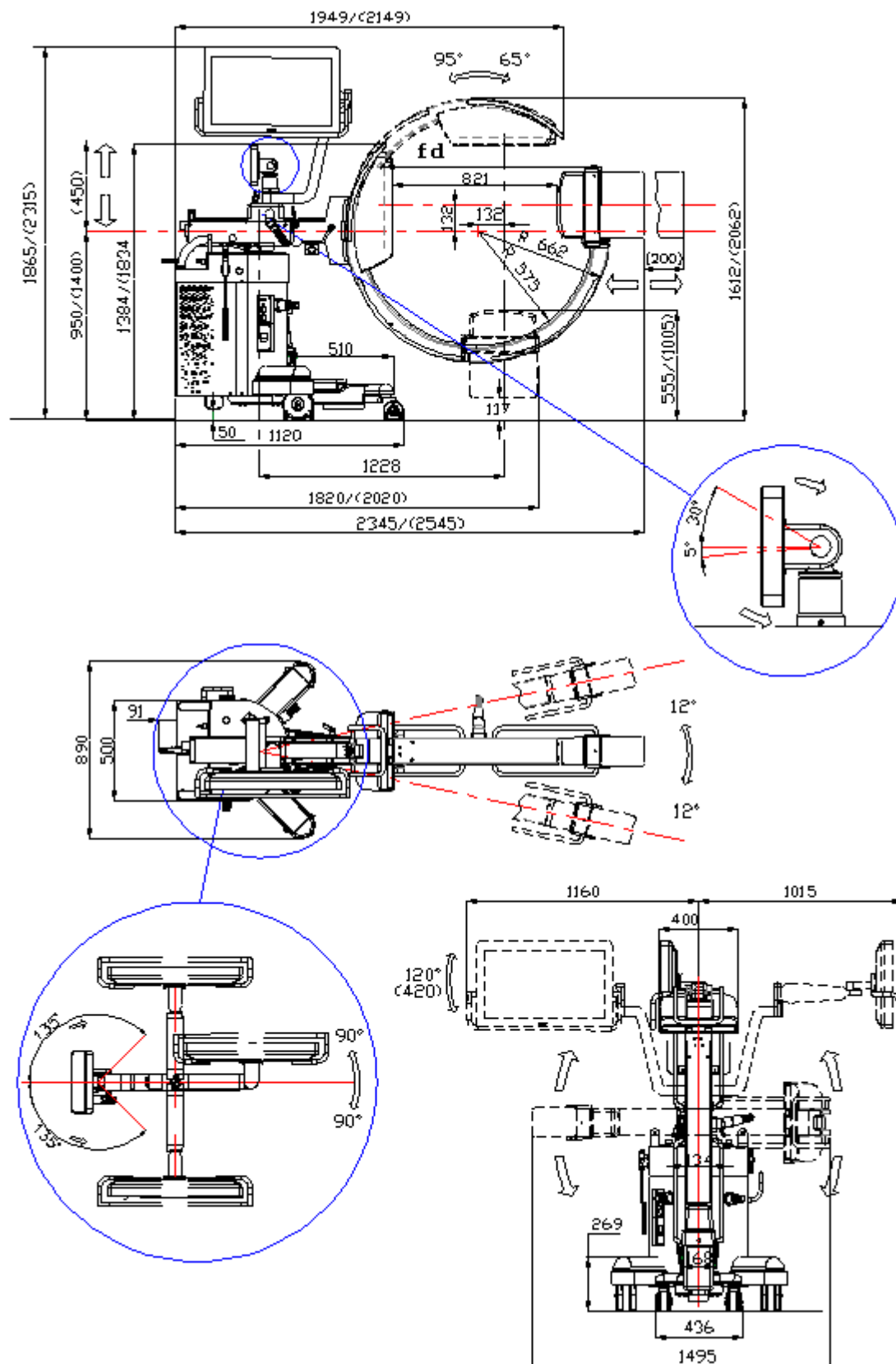
Resolution	325dp
Print format	A6-320x100mm
Print speed	3,3 s (960x1280 dots)
Video	Full HD



21 DIMENSION



30 DIMENSION



Rotating anode FD 1080mm

Weight:: 310Kg

FDX Visionary-CS

