

海世沃[®]
HASDER machine



**Invincible and omnipotent,
BV226 is your partner and your second home!**



We are founded in 2005, locating in Linhai, Zhejiang
HASDER a manufacturer specializing in producing of all-terrain vehicles.



**BV226
QED180**

CONTENTS

1	ABOUT HASDER	
	About us	02
	Qualifications & Accolades	03
2	PRODUCT INTRODUCTION	
	HSD-BV226 ATV	05
	2 Track drive-BM	10
	HSD-BV228 8x8 ATV	13
	Wheeled 8x8-BM	17
	Wheeled 4x4-BM	19
	ET200 walking excavator	22
	GT350J The high mobility bulldozer	24
	GZ500J The high-mobility loader	26
	GW200J High mobility wheel excavator	28
	GD220J High mobility multi-purpose engineering vehicle	30
	GW200J High mobility wheel excavator	32
3	PRODUCT APPLICATION	
	Why choose us?	34
	Cooperation partners	35
	About our story	36

INTRODUCTION

About us

Hasder is a professional manufacturer of all-terrain vehicles and related parts. We were founded in 2005 in Linhai, Zhejiang . At present, we have All-Terrain Leopard two-stage tracked All-terrain rescue vehicle and All-Terrain Wolf 8X8 amphibious all-terrain rescue vehicle.

Introduction of products

The products are mainly used for the army logistics support, border patrol, forest fire prevention, flood relief, oil exploration, emergency rescue and other fields. The products are suitable for grassy ponds , hills, deserts, snow roads and mountains and other complex terrain. Moreover , they have convenient and flexible operation, fast mobile speed, strong cross-country ability. Also , they proured strong adaptability and trafficability in harsh and complex natural environment and roadless geographical environment. In addition, they offer the provision of customization and modularization production services based on market demands.

Product quality assurance

As the drafting unit of the "Standard for Double-section Tracker Transport Vehicles", we have passed the International Enterprise Standard Quality (ISO9001), Environmental (ISO14001), Health (ISO45001) certification and the EU product safety CE certification domestically and internationally; The vehicle quality has passed the inspection of China National Engineering Machinery Quality Inspection and Testing Center; At the same time, it has passed the 2021 Safety Emergency Equipment Application Pilot demonstration Project and the first set in Zhejiang Province; The company is also a member of the National Innovation Alliance for Forest Fire Prevention and Equipment and a deputy secretary-general (director) unit of the Forest and Grassland Fire Prevention Professional Committee of the Chinese Forestry Society.

ISO REGISTERED ENGINEERING EXCELLENCE

● Part one

Utility Model Patent Certificate



A transmission system for vehicles and its shaft connection structure

A transfer box with speed regulation



A dual section All-terrain vehicle with dual drive mechanism

A four side wheel axle gearbox



A dual section all terrain fire truck



● Part two

Certificates of Honor and Trophy



Key brand units recommended in the national machinery manufacturing industry



China Machinery Industry Qualification Level Certificate Industry level 1



Credit Rating Certificate



Chu hong wei Integrity Manager Certificate



National Key Private Enterprises

● Part three

Qualification certifications



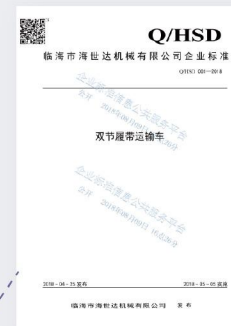
QMS Certificate of Registration

ISO9001 Quality Management System Certification



8X8 amphibious all terrain vehicle CE certification

Haishida Company Enterprise Standards



Tracked Utility Terrain Vehicle CE certification and Report

海世沃[®]
HASDER machine



BV226
QED180

**BV226
QE0180**

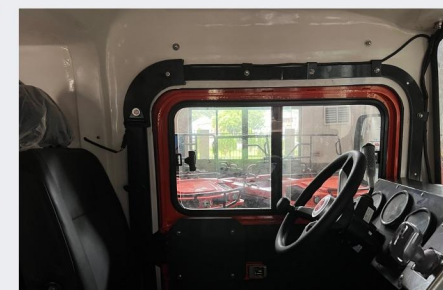


The body is made of aviation alloy aluminum material, which is strong and durable, The material is lighter than steel, and relatively corrosion resistant. The cabin is made of refractory glass fiber reinforced plastic (FRP), which plays the role of durability, heat insulation and flame retardant. The roof of the front and rear vehicles is equipped with the upper hatch cover for escape, observation and ventilation. The vehicle is designed to be used in extreme conditions. The front and rear cabin are equipped with heating devices and windows that can be opened or closed. The crew compartment is designed with diesel heaters, which can ensure the heating requirements of the passengers in the cold season.

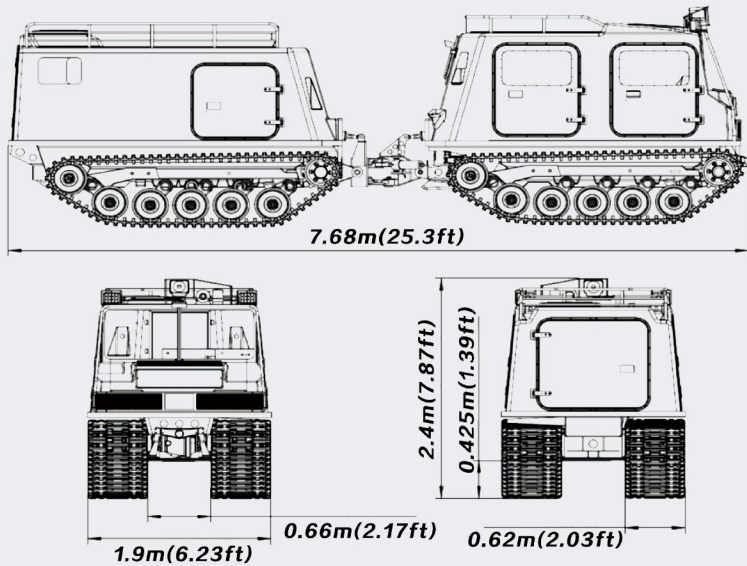
All-terrain Utility Carriers Manufacturers
TWO-SEGMENT TRACKED MULTIPURPOSE ATV

This vehicle has the ability to float. When conditions are appropriate, it can wade and float. It can paddle forward with four tracks and freely walk through the snow, deserts, swamps, hills, forests, lakes, muddy roads and other areas, with strong ability to cross trenches and obstacles. The front vehicle can carry 1000 kg, the rear vehicle can carry 3000 kg. Hence, the total loading capacity of 4000 kg; The troop transport carries 6 people in the front vehicle, 14 people in the rear vehicle. In total, it has the capacity of 20 people; The upper part of the shed is designed with guardrail, and can carry 400 kg of supplies and equipment.

The vehicle is a front and rear two-body structure. Its front and rear drive at the same time, using hydrostatic articulated torsion waist steering device connection. Each carriage is composed of chassis part, body part, transmission part and action part.



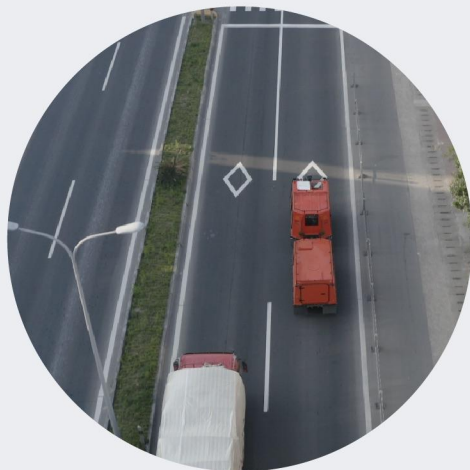
Product parameters



BV226 double-track all-terrain vehicle parameters

Body parameters				
Body Size	Length: 7680mm	Width: 1900mm	Height: 2340mm	
Curb Weight	Front carriage weight	Rear Carriage	total weight	
	3050kg	2550kg	5600kg	
Effective capacity	1000kg	3000kg	4000kg	
Gross Weight	4050kg	5550kg	9600kg	
Passenger	5 (6) people	14 people	19 (20) people	
Warehouse volume	3.5 m ³	6.5 m ³	10m ³	
	performance parameter		Power parameters	
Top speed	land	67 km/h	Engine model	F1CE8481K
	on the water	9.8 km/h	Automatic transmission	NJI.6R4OA
Gradeability	hard surface	48 °	Displacement	2.998L
	snow road	30°	Engine power	125 K(170ps)
Maximum slope creep		36°	Torque	460NM
Maximum trench crossing		1.5m	Gear position	Fully automatic GBX
Full fuel range		400 km	Steering system	Hinged Hydrostatic Steering System
Ground pressure		10.2 Kpa	Turning radius	6 M
Minimum operating temperature		-45 °C	Track	Rubber Track width: 620mm
Alternator		14V 150AH	Carriage material	FRP
Battery		1x12V, 105Ah	Body materials	Aviation grade alloy aluminum

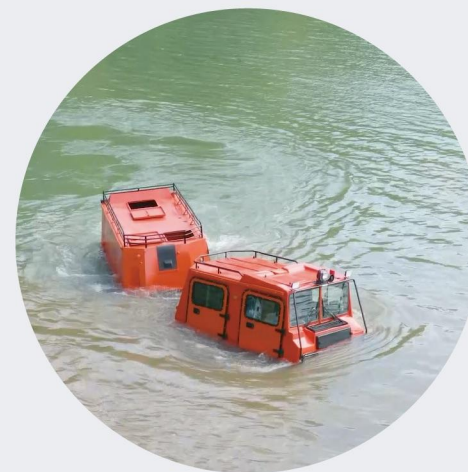
APPLICATION



On Road Driving



Snow



Amphibious



Air Transportable



Mountains And Forests



All Terrain



The double-tracked all-terrain vehicle is characterized by light self-weight, large load capacity, low grounding pressure, convenient and flexible operation, and has strong performance. It is mainly used in forest fire prevention, border patrol, emergency rescue and disaster relief, geological exploration and other fields. In extreme conditions, it is a supplement to wheeled vehicles and aircraft. It is applicable to complex and dangerous areas such as dry grassy ponds, marshes, deserts, ice and snow roads, mountains, hills, and gullies. It is a vehicle with strong off-road performance domestically and internationally .

CASES STUDYS



2 TRACK DRIVE FULLY AMPHIBIOUS- ALL TERRAIN VEHICLE BASE MODEL



Larger proximity angle ensures the vehicle's height of overcoming obstacles; Larger track grounding length ensures the vehicle's width of overcoming trenches. Could spin turn, making the vehicle more maneuverable and flexible. Equipped with an AT gearbox, it is easy to operate, reduces the driver's operating intensity, and reduces the impact of the vehicle.

The vehicle can be modified according to customer needs to meet the needs of different customers. It can be widely used in emergency rescue, forest firefighting, oil exploration, electric power rescue, tower maintenance and other industries to complete personnel search and rescue, material transport, equipment traction and other emergency rescue tasks.

2 TRACK DRIVE FULLY AMPHIBIOUS- ALL TERRAIN VEHICLE BASE MODEL

2 Track drive fully Amphibious can travel freely in the wind, sand, rain, snow and other extremely harsh climatic conditions, in the absence of any road in the case of land, Gobi, swamps, mudflats, lakes, snow and small rivers and other complex terrain environment.

Larger track grounding area makes the whole vehicle with low grounding specific pressure, which makes it have the ability to pass on soft road surfaces such as Gobi, swamp, mudflat, lake, snow, etc.;

Product Pictures



2 TRACK DRIVE FULLY AMPHIBIOUS- ALL TERRAIN VEHICLE BASE MODEL

⊙Product parameters

Body Dimensions(not include bulge)	6580*2590*2880 mm
Cargo Space	3000*2500 mm
Curb Weight	7 tons
Payload	Land:3 tons, Water:1.5 tons
Land Speed (km/h)	50 km/h
Water Speed (km/h)	5 km/h
Maximum kilometers(Km)	300 Km
Gradient Uphill	25 Degrees
Gradient Side-Slope	10 Degrees
Trench Crossing	1200 mm
Approach Angle	25°
Departure Angle	23°
Crossing Vertical Barriers	600 mm
Ground Pressure (KPa)	20 Kpa
Chassis Clearance(mm)	400 mm

Turning Radius(M)

7 M

Floating Capacity

✓

Warranty

2 years or 5,000 Kms (Whichever comes first. As long as one of these conditions is met, the vehicle is not covered under warranty)

海世沃®
HASSLER Machine



 **BXB**
ALL-WOLF

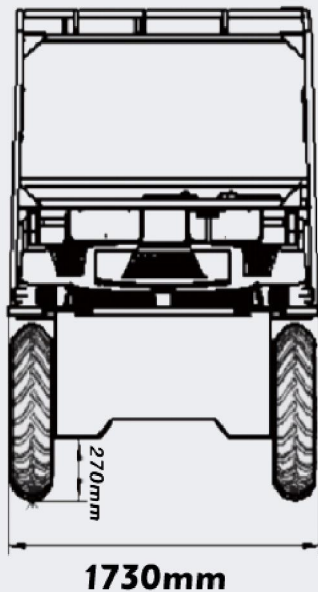
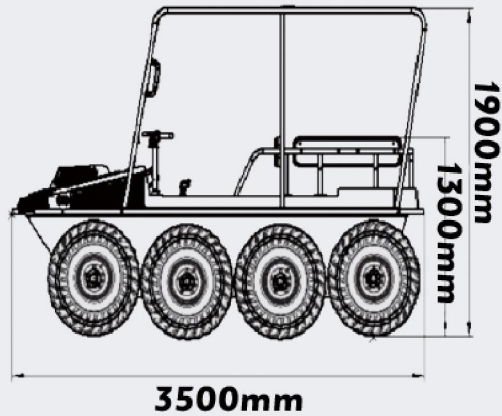


8X8 AMPHIBIOUS ALL TERRAIN VEHICLES

The 8x8 amphibious all-terrain vehicle uses 8x8 all-wheel drive, differential for braking and steering, stepless speed change, and fully sealed body. The tyres use the "duck webbed" tyres, which are special for amphibious vehicles. In the water, the tyres change into "paddle" for fast driving. The transmission mode of the vehicle is gear box and shaft transmission system, which subverts the traditional drive and leads the new technological revolution. The vehicle has a 45° climbing ability and can turn around in place. The maximum speed of the vehicle can reach 60 kilometers per hour, and it can run stably for a long time in different extreme temperatures ($\pm 45^{\circ}\text{C}$). In addition, based on this vehicle, we have also developed a special fire water tanker.

CASES STUDYS

Product parameters



Vehicle Body parameters			
Body dimension	3500*1730*1300mm	wheelbase	700*700*700mm
Curb mass of the whole vehicle	1084KG	Track width	1500mm
Rated load	700kg(or 8 people)on land	Minimum	270mm
	450kg(or 6 people)on water	Seats	8 Seats
Performance parameters		Dynamic parameters	
Start mode	Triple insurance one-button electric start	Engine mode	SQR372
Ignition mode	EFI	Engine type	In-line/three-cylinder,four-stroke,water-cooled,overhead double-camshaft
Battery specification	12V/80Ah	Engine displacement	800cc
Driving form	Land: all-wheel drive	Compression ratio	9.5:1
	On water: driven by tire sculling	Rated power and	39 KW(6000±50r/min)
Maximum speed	Land: 60 km/h	Maximum torque and speed	70Nm(3500 ~ 4000r/min)
	Above water: 8 km/h(tire water)	Idling	850±50r/min
Obstacle clearance height	380mm	Minimum fuel consumption	275g/(KW·h)
Minimum turning radius	Left-750mm; Right-700mm	Fuel grade	Unleaded gasoline of 92# and above for vehicles
Maxinum climbing angle	48°	Lubrication method	Composite (pressure,splash lubrication)
Approach angle	47.7°	Clutch mode	CVT
Departure angle	60.1°	Variable speed type	CVT+ Second gear forward, neutral and reverse
Braking method	Caliper disc hydraulic brake	Accessories	
Tyre specification	25*12-9NHS		
Tyre pressure	57PSI(34.5-48.3KPa)	Towing hook, winch, shed, armrest box,anti-rollover bracket,etc	
Transmission mode	Gearbox shaft driver		

APPLICATION



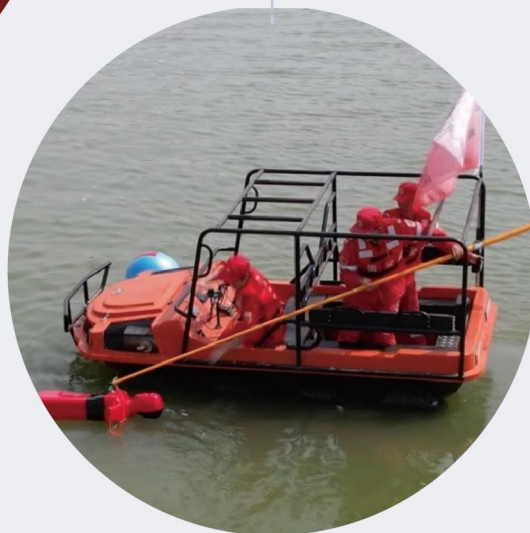
Amphibious

on Road



All Terrain

48° Gradient



CASES STUDYS



WHEELED 8X8 FULLY AMPHIBIOUS- ALL TERRAIN VEHICLE BASE MODEL



WHEELED 8X8 FULLY AMPHIBIOUS- ALL TERRAIN VEHICLE BASE MODEL

Wheeled 8x8 Fully Amphibious is fully amphibious and is one of the most versatile All-Terrain Vehicles in it. It is based on military wheeled vehicle technology, full-time drive, fully sealed body and large-diameter wide-section low-pressure off-road tires, with a ground pressure of less than 25 kPa, could spin turns class currently on the market. Powerful, agile, and extremely robust. The vehicle is manufactured using the latest technology and all brand-new components.

The vehicle has excellent mobility, off-road passing and transportation capabilities, and can smoothly pass through urban and rural flooding, snow, rivers, lakes, swamps and other terrains. According to different mission requirements, it can be equipped with functional modules for drainage, power generation, fire-fighting, personnel transport, material transport, etc., so as to meet the requirements for emergency rescue equipment protection in special areas.

Product Pictures



WHEELED 8X8 FULLY AMPHIBIOUS- ALL TERRAIN VEHICLE BASE MODEL

Product parameters

Dimensions	6000*2450*2540 mm
Curb Weight	6 tons
Payload	3 tons
Passenger Capacity	14 peoples(including operator)
Land Speed (km/h)	60 km/h
Water Speed (km/h)	5 km/h
Off-road Average Speed(km/h)	30 km/h
Gradient Uphill	30 Degrees
Gradient Side-Slope	20 Degrees
Trench Crossing	1300 mm
Crossing Vertical Barriers	400mm
Ground Pressure (KPa)	22 Kpa
Tire Width (mm)	600 mm
Floating Capacity	✓
Tire Drive Type	8-wheel drive

Warranty

2 years or 5,000 Kms (Whichever comes first. As long as one of these conditions is met, the vehicle is not covered under warranty)

WHEELED 4X4 FULLY AMPHIBIOUS- ALL TERRAIN VEHICLE BASE MODEL



It is based on military wheeled vehicle technology, full-time drive, fully sealed body and large-diameter wide-section low-pressure off-road tires, with a ground pressure of less than 30 kPa, and has the ability to drive diagonally and four-wheel steering.

The vehicle has excellent mobility, off-road passing and transportation capabilities, and can smoothly pass through urban and rural flooding, snow, rivers, lakes, swamps and other terrains. According to different mission requirements, it can be equipped with functional modules for drainage, power generation, fire-fighting, personnel transport, material transport, etc., so as to meet the requirements for emergency rescue equipment protection in special areas.

WHEELED 4X4 FULLY AMPHIBIOUS- ALL TERRAIN VEHICLE BASE MODEL

Wheeled 4x4 Fully Amphibious is fully amphibious and is one of the most versatile All-Terrain Vehicles in its class currently on the market. Powerful, agile, and extremely robust. The vehicle is manufactured using the latest technology and all brand-new components.

WHEELED 4X4 FULLY AMPHIBIOUS- ALL TERRAIN VEHICLE BASE MODEL

⊙Product parameters

Dimensions	4800*2760*3100 mm
Curb Weight	4 tons
Payload	1.5 tons
Passenger Capacity	12 peoples(including operator)
Land Speed (km/h)	60 km/h
Water Speed (km/h)	5 km/h
Gradient Uphill	30 Degrees
Gradient Side-Slope	20 Degrees
Trench Crossing	1200 mm
Crossing Vertical Barriers	500mm
Ground Pressure (KPa)	30 Kpa
Tire Width (mm)	700 mm
Floating Capacity	✓
Tire Drive Type	4-wheel drive

Steering
Two-wheel steering, four-wheel steering, crab steering
Warranty
2 years or 5,000 Kms (Whichever comes first. As long as one of these conditions is met, the vehicle is not covered under warranty)

CASES STUDYS



ET200 WALKING EXCAVATOR



ET200 WALKING EXCAVATOR

HASDER ET-200 walking excavator (multi-terrain intelligent emergency rescue robot), also known as 'Iron Mantis'. It is an all-terrain, multi-purpose machine for construction work on both plateau and plain area. In high altitude mountainous forest, gully, swamp, tunnel and other areas can still be easily operated. This machine utilizes the full wheel drive/walking chassis combining wheel-drive and walking movement, enabling the machine work in construction sites that other machines cannot be applied to, implementing the digging, fire - fighting logging, cutting, crushing, drilling, cutting, piling and other engineer operation, as well as rescue and recovery efforts in case of an earthquake, avalanche, landslides, etc. In addition, it

can be equipped with wireless remote control system and unmanned aerial .vehicle monitoring for remote control operation.

⊙Product Advantages And Characteristics

Strong anti-interference

seven hydraulic interfaces on the bucket bar end for quick connection of tools, achieving excavating, hoisting, crushing, drilling, felling, grasping and lifting etc.

Superior obstacle-surmounting ability

all-terrain suitable, transformable structure with four flexible legs. It can realize the functions of climbing hills, wading water, crossing ditches and climbing vertical obstacles in complex terrain environment, and can implement a variety of engineering operations where other mechanical equipment can not go.

Limit load technology

applies limit load technology, realizing the changing power of hydraulic pump with engine output power, result in optimum power matching.

ET200 WALKING EXCAVATOR

Proprietary control software and integrated multi-functional joystick

the wireless control technology is successfully applied to the ET200 walking excavator, which can automatically adjust the working frequency band to avoid electromagnetic interference in the complex and changeable electromagnetic field environment, greatly improving the reliability of remote control operation.

Wireless control technology

all-terrain suitable, transformable structure with four flexible legs. It can realize the functions of climbing hills, wading water, crossing ditches and climbing vertical obstacles in complex terrain environment, and can implement a variety of engineering operations where other mechanical equipment can not go.

Wireless video monitoring system

remote video monitoring ET200 walking excavator working in dangerous environment, operators can stay away from dangerous operation sources, to ensure safety.

Product parameters

Total weight	20700kg
Standard bucket capacity	0.8m ³
Bucket digging force	135KN
Arm digging force	80KN
Slewing speed	10r/min
Max. digging radius	9800mm
Max. digging height	11000mm
Max. unloading clearance	8000mm
Max. digging depth	6350mm
Max. travel speed	15km/h
Max. driving gradeability	25°
Max. walking gradeability	45°
Max.obstacle clearing capability	2800mm
Max. fording depth	2400mm
Max. pace	6500mm
Max. adaptive working slope	30°

GT350J THE HIGH MOBILITY BULLDOZER



GT350J THE HIGH MOBILITY BULLDOZER

The high mobility bulldozer uses a 'two-in-one' approach, combining road and off-road vehicles in an innovative way. The new chassis not only has the advantages of flexible and efficient bulldozer articulated frame, but also has the characteristics of high speed and safe driving of heavy duty trucks. The stable driving speed is more than 80km/h, and the product also meets the requirements of field earth-moving operation at low speed.

The new shovel can realize the functions of straight push, left and right oblique push, down dig push and soil loosening. The products can meet the requirements of complex earth-moving operations,

suitable for road clearance, site leveling, ditch digging and other construction operations. The whole machine is equipped with anti-tumbling, anti-falling object driving room, unmanned operation standard control interface.

It can better adapt to the high mobility and efficient operation requirements of emergency equipment reform in the new era, and be used for disaster rescue and security services.

⊙Product Advantages And Characteristics

Strong maneuverability

The composite chassis technology is adopted to create a new generation of high-speed chassis, with a stable speed of more than 80km/h ; Machinery without trailer consignment, can quickly arrive at the site ; The multi-mode control suspension technology is used to ensure that the equipment can adapt to different working conditions and has strong off-road driving performance.

GT350J THE HIGH MOBILITY BULLDOZER

High-efficiency multifunctional operation

It can meet the requirements of complex soil moving operation, and can realize the functions of direct pushing, left and right oblique pushing, downward digging pushing, soil loosening, etc; The product is equipped with semi-trailer air source interface and installation interface, with trailer function, but also configured with hydraulic power source interface.

Man-machine comfort and safety

Anti-rollover and anti-falling objects; In line with ergonomic design, high operation comfort; Products with ABS braking, emergency steering and other functions to ensure safe operation; Pilot control, equipped with cold and warm air conditioning, to ensure comfortable operation.

High intelligence

Display monitor control; Status detection and fault diagnosis; Intelligent heat dissipation control; wireless remote control.

Product parameters

Chassis type	wheeled model
Curb weight	21t
Boundary dimension	7650×3400×3500mm
Accommodation	80km/h
Maximum travelling speed	2
Maximum range	500km
Maximum gradability	25°
Max fording depth	1.2m
Blade width	3.4m
Maximum cutting depth	0.45m
Max.lift height	1m
Operation efficiency	160m ³ /h
Wireless remote control distance	50m
Working temperature	-40~+46°C
Altitude of working plateau	≥4500m
Cab protection function	Anti-rollover, anti-falling objects

GZ500J THE HIGH-MOBILITY LOADER



GZ500J THE HIGH-MOBILITY LOADER

The high-mobility loader is designed on the same chassis as the high-speed bulldozer. The new chassis not only has the advantages of flexible and efficient bulldozer articulated frame, but also has the characteristics of high speed and safe driving of heavy duty trucks. The stable driving speed is more than 80km/h, and the product also meets the requirements of field earth-moving operation at low speed.

The multi-mode control technology of hydro-pneumatic suspension can not only meet the requirements of shock absorption smoothness in high-speed driving, but also meet the requirements of front axle rigid fixed and rear axle swing in common loader oper

ations. It can also realize the whole machine lifting height over the obstacle and reducing the height to improve the pass ability. The whole machine is equipped with anti-tumbling, anti-falling object driving room, unmanned operation standard control interface. It can better adapt to the high mobility and efficient operation requirements of emergency equipment reform in the new era, and be used for disaster rescue and security services. It can better adapt to the high mobility and efficient operation requirements of emergency equipment reform in the new era, and be used for disaster rescue and security services.

⊙Product Advantages And Characteristics

Strong maneuverability

The composite chassis technology is adopted to create a new generation of high-speed chassis, with a stable speed of more than 80km/h ; Machinery without trailer consignment, can quickly arrive at the site ; The multi-mode control suspension technology is used to ensure that the equipment can adapt to different working conditions and has strong off-road driving performance.

High-efficiency multifunctional operation

It can meet the requirements of complex soil moving operation, and can realize the functions of direct pushing, left and right oblique pushing, downward digging pushing, soil loosening, etc; The product is equipped with semi-trailer air source interface and installation interface, with trailer function, but also configured with hydraulic power source interface.

Man-machine comfort and safety

Anti-rollover and anti-falling objects; In line with ergonomic design, high operation comfort; Products with ABS braking, emergency steering and other functions to ensure safe operation; Pilot control, equipped with cold and warm air conditioning, to ensure comfortable operation.

High intelligence

Display monitor control; Status detection and fault diagnosis; Intelligent heat dissipation control; wireless remote control.

Product parameters

Chassis type	wheeled model
Curb weight	21t
Boundary dimension	8550×3220×3500mm
Accommodation	80km/h
passengers	2
Maximum range	500km
Maximum gradability	25°
Max fording depth	1.2m
Max. unloading clearance	≥2910mm
Maximum unloading distance	≥1150mm
Bucket capacity	2.7m ³
Operation efficiency	170m ³ /h
Wireless remote control distance	50m
Working temperature	-40~+46°C
Altitude of working plateau	≥4500m
Cab protection function	Anti-rollover, anti-falling objects

GW200J HIGH MOBILITY WHEEL EXCAVATOR



GW200J HIGH MOBILITY WHEEL EXCAVATOR

High mobility wheel excavator is a new product. It has fast walking speed, can realize long-distance self-rotation, and can quickly change a variety of operating devices. The product has the advantage of mobility, flexibility and efficiency. High-speed wheel excavator is mainly used in high mobility emergency rescue, carrying out emergency road repair, clearing obstacles, urban tap water, municipal administration, pipeline maintenance engineering, civil engineering, industrial material handling, tunnel excavation, water conservancy engineering, urban demolition and so on.

⊙Product Advantages And Characteristics

Strong maneuverability

With HASDER autonomous variable transmission bridge matching technology, the vehicle can reach a maximum speed of more than 80km/h; With front-wheel steering function, strong mobility in narrow areas; The product adopts oil-gas suspension technology, with large ground clearance, impact resistance and strong adaptability.

High-efficiency multifunctional operation

Equipped with folding arm, the equipment has a wide range of operation, large force and high efficiency; It can be expanded with multi-function integration, such as mining and crushing, suitable for complex working conditions.

Man-machine comfort and safety

Anti-rollover and anti-falling objects; In line with ergonomic design, high operation comfort; Composite steering technology is adopted to ensure the safety of high-speed driving.

GW200J HIGH MOBILITY WHEEL EXCAVATOR

High intelligence

Display monitor control; Status detection and fault diagnosis;
Equipped with "one machine multi – function" intelligent control system and multi – function machine hydraulic auxiliary system.

⊙Product parameters

Curb weight	22t
Boundary dimension	8300×2950×4100mm
Maximum range	80km/h
Maximum range	500km
Max fording depth	20°
Max. digging radius	1.2m
Max. digging height	9100mm
Max. unloading clearance	9200mm
Max. digging depth	6500mm
Working temperature	5500mm
Altitude of working plateau	-40~+46°C
Adapt to plateau altitude	≥4500m
dipper capacity	≥0.8m ³

GD220J HIGH MOBILITY MULTI-PURPOSE ENGINEERING VEHICLE



GD220J HIGH MOBILITY MULTI-PURPOSE ENGINEERING VEHICLE

High mobility multi-purpose engineering vehicle is designed to meet the market demand of emergency equipment. Based on the existing equipment, it has been improved and developed in four aspects: maneuver speed, operation ability, intelligence level, and safety protection ability. The product is equipped with nine operating capabilities, including loading, digging, pushing, loosening, gripping, scraping, crushing, cutting and pulling. It can be used for road repair, obstacle removal, emergency rescue and other tasks.

⊙Product Advantages And Characteristics

Strong maneuverability

The vehicle can reach a maximum speed of more than 100km/h; Dual mode drive with two and all-wheel-drive; Multi-mode steering; Strong adaptability to low temperature and heating environment.

High-efficiency multifunctional operation

It has multifunctional operations such as loading, digging, pushing, gripping and pulling; Loading and digging system refer to professional loader and excavator type design, with high operation effective.

Man-machine comfort and safety

Anti-rollover and anti-falling objects; In line with ergonomic design, high operation comfort; With emergency steering function.

High intelligence

Display monitor control; Status detection and fault diagnosis; Intelligent heat dissipation control; Configure load automatic leveling and location memory; Configure wireless remote control.

GD220J HIGH MOBILITY MULTI-PURPOSE ENGINEERING VEHICLE

⊙ Product parameters

Chassis type	15t
Curb weight	9.5x2.5x3.9m
Boundary dimension	2.1m
Accommodation	3.1m
Maximum travelling speed	≥100km/h
Maximum range	≥600km
Maximum gradability	29.5°
Max fording depth	≥0.9m
Bucket capacity	0.8m ³
Max. unloading clearance	3m
Maximum lifting height	3.7m
Maximum unloading distance	0.7m
Capacity of bucket	0.2m ³
Max. digging radiu	5.5m
Max. digging depth	4.2m

Max. unloading clearance	6.1m
Wireless remote control distance	≥1km
Winch traction	60kN

XTV16J THE HIGH MOBILITY RUBBER CRAWLER BULLDOZER



XTV16J THE HIGH MOBILITY RUBBER CRAWLER BULLDOZER

The High mobility rubber crawler bulldozer is a kind of all-terrain and multi-purpose bulldozer with strong mobility and large traction for the plateau and plain. It adopts a new rubber track chassis, strong terrain adaptability, can implement a variety of engineering operations such as earth moving, soil loosening, obstacle clearing, traction, rescue and so on. The product can be used for emergency construction of roads, repair and maintenance of roads, construction of embankments, backfill foundation pits, remove obstacles, remove snow, level the site and other construction scenes. It can complete the shoveling and stacking of loose materials in short distances, and also has the space to expand in the field of emergency

rescue such as earthquake, landslide, debris flow and landslide.

⊙ Product Advantages And Characteristics

Strong maneuverability

The acceleration capability of the product is outstanding, with various features such as light weight and flexible operation. Vehicle steering flexible, stepless steering, and can achieve in situ steering, center steering functions. At the same time, it has high-speed reverse gear, which can shorten the operation cycle time and improve the efficiency of soil moving.

Superior passability

The vehicle adopts rubber tracks, with large ground area and low ground ratio, which can be driven on typical soft pavement such as sandy land and wetland. It has strong passability, and can achieve a height of 0.3m, a width of 2.6m, a wading depth of 0.9m and a longitudinal slope of 60%.

Highly integrated

Cab, walking, suspension, working device, power transmission system design compact. The product is small size, light weight, high degree of maintenance integration, high degree of detection integration.

XTV16J THE HIGH MOBILITY RUBBER CRAWLER BULLDOZER

Outstanding operational effect

The shovel can realize lifting, turning and tilting in three directions. It can adapt to various operating conditions such as emergency open circuit and road obstacle clearing. The integrated design of soil breaker and shovel can realize the high speed backward soil loosening and high working cycle efficiency.

Good maintenance

The radiator and cab can be turned over to facilitate the maintenance of hydraulic system and power system. Air filter, fuel filter element, hydraulic oil filter element centralized design, convenient replacement and maintenance. Oil filling port and oil gauge, articulated lubrication point of walking system, oil filling point of suspension system, convenient oil level, pressure measurement and filling.

Product parameters

Operating device parameters

Width	2700mm
High	920mm
Weight	1.82m ³
Maximum depth of soil cutting	300mm
Maximum lifting height	1050mm
Oscillating angle	23°
Angle of inclination	8°

Specifications

Boundary dimension	5975×2945×2935mm
Airlift height	2650mm
Weight	16.5t
Maximum speed	50km/h
Maximum off-road speed	30km/h
Maximum driving speed in reverse	20km/h
Engine power	221kW
Maximum winch traction	100kN
Maximum tractive force	110kN

Traffic-ability

Ground clearance	450mm
Ground pressure	≤60kPa
Max fording depth	0.9m
Maximum vertical obstacle crossing	0.3m
Max across the ditch	1.6m

Maneuverability

Braking length	≤10m
Longitudinal slope	60%
Side slope	30%
Maximum range	≥300km

Track parameters

Track width	535mm
Track center distance	1890mm
Track grounding length	2500±100mm

Why choose us?



TUV certification

TUV certification, simplifies trading procedures and provides uniform technical specifications, for the European trade market countries of the product. For products from any country to enter the EU, EFTA must obtain product certification.

The company is TUV Certificated

On July 1, 2021, TUV experts carried professional test equipment to carefully examine the performances and safe driving conditions of the company's vehicles on site. measured the actual data of all aspects of the vehicles and recorded the documents. Finally, TUV experts gave us professional and valuable advice, and discussed the future direction of the vehicle and the basic principles of risk avoidance. The company also ensured that the vehicle export will definitely meet the standard of local product , and adhere to the principles of access to each market .



COOPERATION PARTNERS



BOYRAZ DIŞ TİCARET A.Ş. Turkey



China Anneng Group (formerly China Water Conservancy Force)



Forest and Grassland Fire Prevention Professional Committee of the Chinese Forestry Society



National Innovation Alliance for Forest Fire Prevention and Equipment



Guangdong Pengyang Emergency Technology Co., Ltd



A UK Leading ATV Rental Solution Provider



China Emergency Department

Forest Armed Police Fire Brigade

Da Hinggan Ling Forestry Group

Greater Khingan Forest Management Bureau of Inner Mongolia (China Inner Mongolia Forest Industry Group)

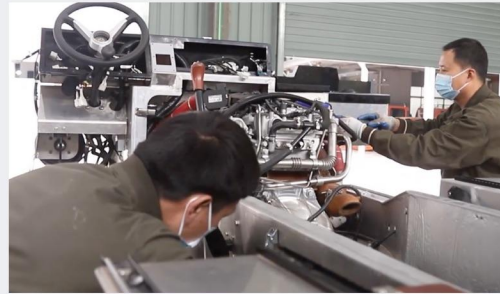


○ LIGHT WEIGH

○ CARRYING CA-
PACITY

○ LOW GROUNDING
VOLTAGEPACITY

○ CONVENIENT AND
FLEXIBLE OPERATION



About our story

At the beginning of the company's founding, founder Chu Hongwei made spare parts for BV206 for many years, from which we found some weaknesses of the vehicle. After nearly ten years of obsession and practice, we successfully developed a All-terrain vehicle that surpasses the existing one. We have been actively exploring the application of products in various fields and continuously optimizing them. Climb infinite, climb boundless! Haishida people insist on becoming "climbers" in the all terrain vehicle industry.



PLEASE CONTACT US

INTERNATIONAL SALES

📱 +86-18969650268

📱 +86-18989600329

🌐 www.hasdergroup.com

✉ Monica@hsdgroup.cn

DOMESTIC SALES

📱 +86-13326019666

☎ +86-0576-85880688

🌐 www.hsdaroup.cn

✉ Sales@hsdgroup.cn

THE NEXT GENERATION ENGINEERING EXCELLENCE

Thank You