

Eco-210

65% RECYCLED POLYESTER /
35% RECYCLED COTTON /
210 GSM / TWILL 2/1



Fabric name	Eco-210
Fabric weight	210 ± 5 gsm
Composition	65% Recycled Polyester, 35% Recycled Cotton
Full width	152 ± 2 cm
Weave	twill 2/1
Finishes	WR
Area of use	construction and transport sectors work wear
Washing instruction	

Physical properties*

			warp	weft	
1	Tensile strength, N	ISO 13934-1:2013	1600	360	
2	Tearing strength, N	ISO 13937-3:2000	30	20	
3	Dimensional Stability To Washing, max.	ISO 6330:2000	3.0%	3.0%	
4	Abrasion Resistance	ISO 12947-2:2002	> 30 000		
5	Pilling Resistance (after 1000 rev.)	ISO 12945-2:2000	3-4		
6	Colour Fastness To Washing (cotton+polyester) 60°C, min.	ISO 105-C06:2010			
			Colour change	4	
			Colour staining	3	
7	Colour Fastness To Perspiration, min.	ISO 105-E04:2013			
			Colour change	4	
			Colour staining	4	
8	Colour Fastness To Rubbing, min.	ISO 105-X12:2001			
			Dry	3-4	
			Wet	2-3	
9	Colour Fastness To Light	ISO 105-B02:2013	> 4		

* The values shown are indicative and may vary slightly from batch to batch.

www.xmtextiles.com

XM TEXTILES EUROPE

Darius ir Gireno st. 42A, Room 509
Vilnius, LT-02189, Lithuania
Tel. +370 52 078 703
info@xmtextiles.com

XM TEXTILES ROMANIA

Sos.Tamasi 20, Hala 6B, Parter,
Buftea, 070000, Ilfov, Romania
Tel. +40 31 630 3639
info@xmtextiles.com

XM TEXTILES ITALIA SRL

Via dei Notai, Blocco 23, Centergross,
40050 Funo di Argelato (BO), Bologna, Italy
Tel. +39 051 952 8202
info@xmtextiles.com

Test Report No.: 0154096991a 001

Page 1 of 5

Client: SHANGHAI XM GROUP LTD

Office 2403~2403, 24th Floor, Zhongyi International Commercial Plaza, 1833 Zhongshan North Road, Shanghai, China

Contact Person: Anna He

Sample Description As Declared :

No. Of Sample : One (1)
Sample Description : Econom-210TC 70/30 210gsm twill 2/1, Navy

Applicant's Provided Care Instruction/Label:



Sample Receiving date: 2015-04-28

Delivery condition: Apparent good, Samples tested as received

Test Period: 2015-04-28 to 2015-05-05

For and on behalf of
TÜV Rheinland (Shanghai) Co., Ltd.



2015-05-05

Tina Wu / Department Manager

Date

Name/Position

Test result is drawn according to the kind and extent of tests performed.

This test report relates to the a. m. test sample. Without permission of the test center this test report is not permitted to be duplicated in extracts. This test report does not entitle to carry any safety mark on this or similar products.

Conclusion

Banned Azo Dyes

M001
P

Note : P = Pass
= No Comment
N/A = Not Applicable

F = Fail
- = Did Not Perform
* = See Remark

Material list

Material No.	Material	Color	Location
M001	Textile	Navy	Woven fabric

1. Banned Azo Dyes

Test Method: EN 14362-1:2012

Test Result:

Test No.	Material No.	Method	Unit	RL	Customer requirement	Test Result	Conclusion
1	M001	EN 14362-1	mg/kg	5	30	A11: 6	Pass

Abbreviation: n.d. = not detected (< Reporting Limit)
RL = Reporting Limit
mg/kg = milligram per kilogram

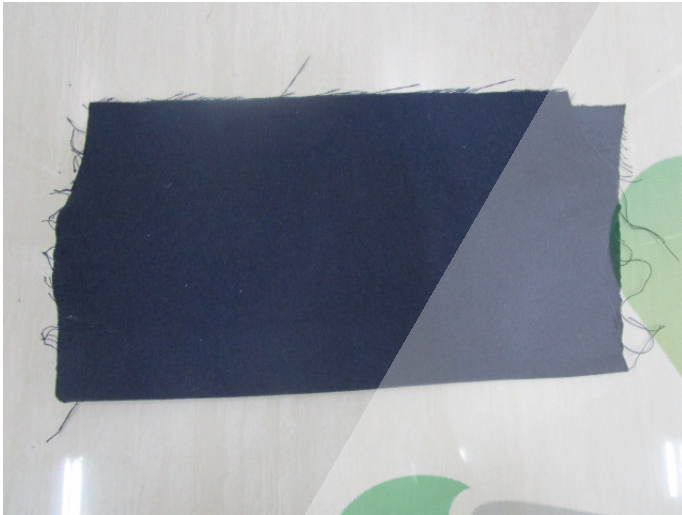
Remark:

- * The CAS-number 97-56-3 (A5) and 99-55-8 (A6) are further reduced to CAS-number 95-53-4 (A18) and 95-80-7 (A19).
- ** Azo colorants that are able to form CAS-number 60-09-03 (A22), generate under the condition of this method CAS-number 62-53-3 (A25) and 106-50-3 (A26).
- *** Azo colorants that are able to form 4-aminoazobenzene (A22), is confirmed by EN 14362-3:2012 / ISO 17234-2:2011.
- **** Azo colorants are detected & quantified by GC/MS and confirmed by LC/MS.

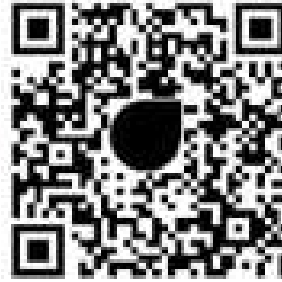
List of azo colorants being tested (according to REACH regulation (EC) No. 1907/2006 and amendment no. 552/2009 Annex XVII Item 43 (formerly known as 2002/61/EC)):

ID	Azo colorant	CAS No.
A1	biphenyl-4-ylamine / 4-aminobiphenyl / xenylamine	92-67-1
A2	benzidine	92-87-5
A3	4-chloro-o-toluidine	95-69-2
A4	2-naphthylamine	91-59-8
A5*	o-aminoazotoluene / 4-amino-2',3-dimethylazobenzene / 4-o-tolylazo-o-toluidine	97-56-3
A6*	5-nitro-o-toluidine	99-55-8
A7	4-chloroaniline	106-47-8
A8	4-methoxy-m-phenylenediamine	615-05-4
A9	4,4'-methylenedianiline / 4,4'-diaminodiphenylmethane	101-77-9
A10	3,3'-dichlorobenzidine / 3,3'-dichlorobiphenyl-4,4'-ylenediamine	91-94-1
A11	3,3'-dimethoxybenzidine	119-90-4
A12	3,3'-dimethylbenzidine / 4,4'-bi-o-toluidine	119-93-7
A13	4,4'-methylenedi-o-toluidine	838-88-0
A14	p-cresidine	120-71-8
A15	4,4'-methylene-bis-(2-chloro-aniline) / 2,2'-dichloro-4,4'-methylene-dianiline	101-14-4
A16	4,4'-oxydianiline	101-80-4
A17	4,4'-thiodianiline	139-65-1
A18	o-toluidine / 2-aminotoluene	95-53-4
A19	4-methyl-m-phenylenediamine	95-80-7
A20	2,4,5-trimethylaniline	137-17-7
A21	o-anisidine / 2-methoxyaniline	90-04-0
A22**	4-aminoazobenzene	60-09-03
A25	aniline	62-53-3
A26	4-aminoaniline	106-50-3

Sample Photo:



- END -



**STANDARD
100**

**BEWO 084394
TESTEX**

**This certificate BEWO 084394 is valid until
15.08.2025.**

SUPPORTING DOCUMENTS

- ✓ Test report : BJ015 245163.1
- ✓ Declaration of conformity in accordance with EN ISO 17050-1 as required by OEKO-TEX®
- ✓ OEKO-TEX® Terms of Use (ToU)

A handwritten signature in blue ink, appearing to read "M. Bachmann", positioned above a horizontal line.

**Matz Bachmann
Managing Director**

A handwritten signature in blue ink, appearing to read "D. Ajdinovic", positioned above a horizontal line.

**Dijana Ajdinovic
Ecology Team Leader**