

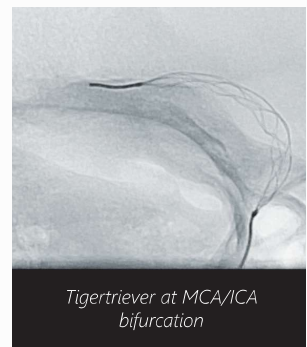
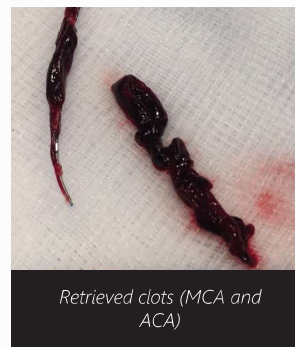
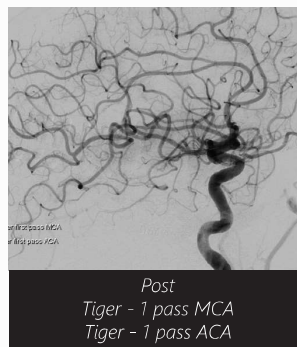
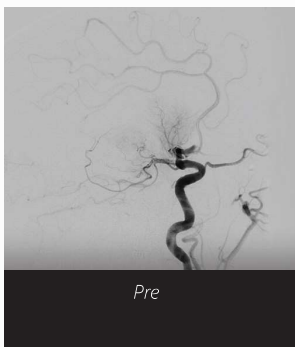
TIGERTRIEVER
Adjustable Clot Retriever



- Highly radiopaque, Fully visible
- Controllable diameter
- Superior Radial Force

	Diameter	Compatibility	Net Length	Cat. No.
TIGERTRIEVER 13	0.5 mm - 2.5 mm	0.016"/ 0.013" ID microcatheter	20.5 mm	TRPP3144
TIGERTRIEVER 17	0.5 mm - 3 mm	0.017" ID microcatheter	23 mm	TRPP3166
TIGERTRIEVER	1.5 mm - 6 mm	0.021" ID microcatheter	32 mm	TRPP3155
TIGERTRIEVER XL	1.5 mm - 9 mm	0.021" ID microcatheter	53 mm	TRPP3133

Example case: 71 year old female, MCA & ACA occlusion treated with Tigertriever



Images courtesy of: Prof. Chapot Alfried Krupp Krankenhaus Essen, Germany

COMANECI
Adjustable Remodeling Mesh



- Continuous blood flow
- Highly radiopaque, Fully visible
- Single hand control

	Diameter	Compatibility	Net Length	Cat. No.
COMANECI 17	0.5 mm - 3 mm	0.017" ID microcatheter	22 mm	ANPP3199
COMANECI Petit	1.5 mm - 3.5 mm	0.021" ID microcatheter	24 mm	ANPP3188
COMANECI	1.5 mm - 4.5 mm	0.021" ID microcatheter	32 mm	ANPP3177



Image courtesy of:
Prof. Remonda and
Dr. Diepers Kantonsspital Aarau,
Switzerland

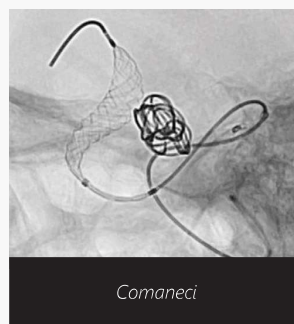


Image courtesy of:
Prof. Chapot Alfried Krupp
Krankenhaus, Essen, Germany

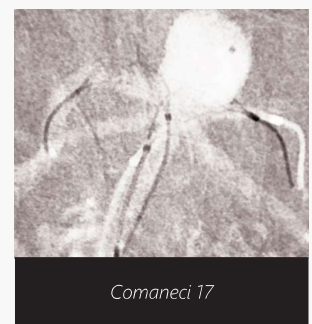


Image courtesy of:
Dr. Alan O'Hare
Beaumont Hospital
Dublin, Ireland

NEVER TOO FAR

T13

TIGERTRIEVER13

Smallest clot retriever on the planet

