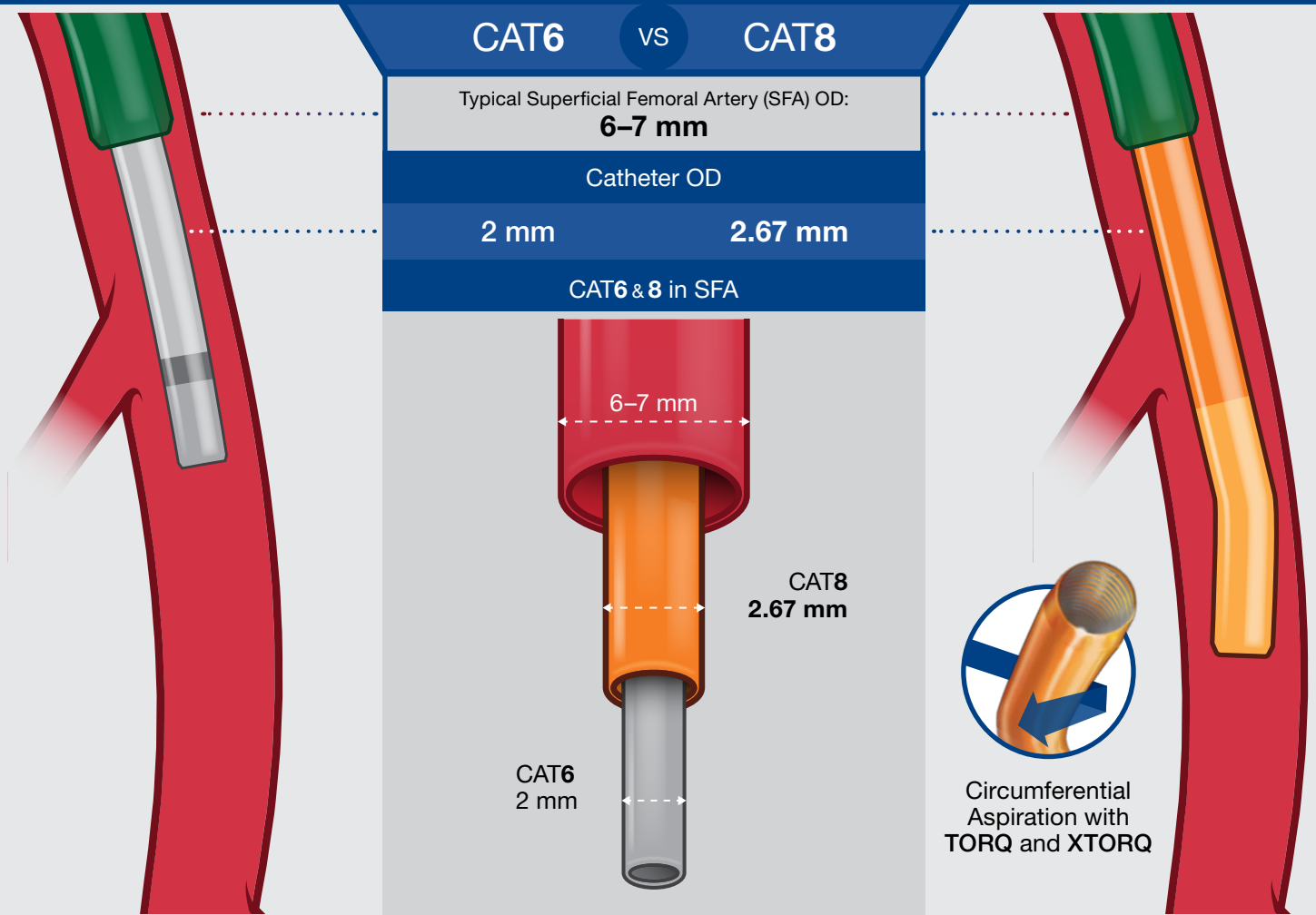


Indigo System

Power Aspiration with CAT8



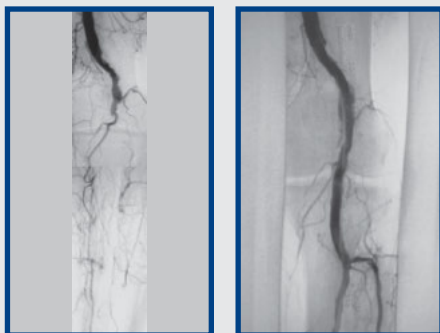
Use largest non-occlusive catheter for **maximum power aspiration**

.63 mm difference in puncture hole size

CAT6	●	●	CAT8
2.82 mm			3.45 mm

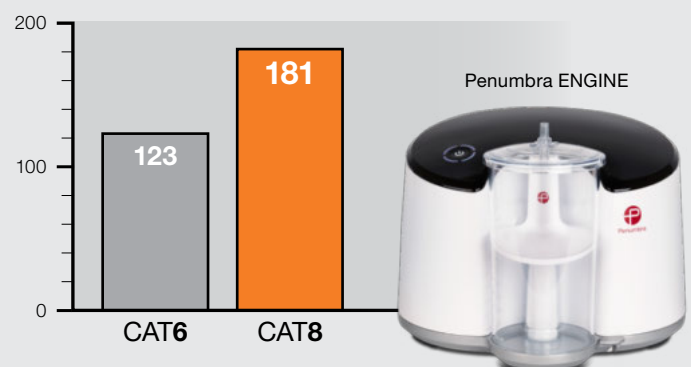
CAT8 has ~**150%** the power of CAT6^a

Aspiration of Thrombus from Popliteal with CAT6 & 8



Dr. Theodosios Bisdas, Athens Medical Center, Athens, Greece

Aspiration Volume (mL in 20 sec)^a



a. Tests performed and data on file at Penumbra, Inc. Bench test results may not be indicative of clinical performance.

Vessel diameters used are common clinical measurements. Renderings are for illustrative purposes only. The clinical results presented herein are for informational purposes only, and may not be predictive for all patients. Images used with permission. Consent on file at Penumbra, Inc. Individual results may vary depending on a variety of patient-specific attributes.

Ordering Information

Indigo Catheter Kits							
Catalog Number	Description	Proximal OD	Distal OD	Compatibility (Sheath or Guide)	Working Length (cm)	Wire Platform (in.) (mm)	Compatible Penumbra Devices
CAT8XTORQ115KIT – Now!	Indigo 8 XTORQ Tip + Dynamic Aspiration Tubing	8 F (2.67 mm)	8 F (2.67 mm)	8 F (2.67 mm) Sheath	115	.014–.038 (.36–.97)	Separator 8
CAT8TORQ85KIT – Now!	Indigo 8 TORQ Tip + Dynamic Aspiration Tubing	8 F (2.67 mm)	8 F (2.67 mm)	8 F (2.67 mm) Sheath	85	.014–.038 (.36–.97)	Separator 8
CAT8STR85KIT – Now!	Indigo 8 Straight Tip + Dynamic Aspiration Tubing	8 F (2.67 mm)	8 F (2.67 mm)	8 F (2.67 mm) Sheath	85	.014–.038 (.36–.97)	Separator 8
CAT6KIT – Now!	Indigo 6 + Dynamic Aspiration Tubing	6 F (2.00 mm)	6 F (2.00 mm)	6 F (2.00 mm) Sheath	135	.014–.038 (.36–.97)	Separator 6
CAT5KIT – Now!	Indigo 5 + Dynamic Aspiration Tubing	6 F (2.00 mm)	5 F (1.65 mm)	6 F (2.00 mm) Sheath	132	.014–.038 (.36–.97)	Separator 5
CAT3KIT – Now!	Indigo 3 + Dynamic Aspiration Tubing	4.1 F (1.37 mm)	3.4 F (1.14 mm)	5 F (1.65 mm) Sheath	150	.014–.025 (.36–.64)	Separator 3
CATD – Now!	Indigo D + Dynamic Aspiration Tubing	8 F (2.67 mm)	8 F (2.67 mm)	8 F (2.67 mm) Sheath	50	.014–.038 (.36–.97)	Separator D

Indigo Separators					Accessories		
Catalog Number	Description	Distal OD (in.) (mm)	Total Length (cm)	Compatible Penumbra Devices	Catalog Number	Description	Compatible Penumbra Devices
SEP8	Separator 8	.072 (1.83)	150	CAT8	PMXENG – Now!	Penumbra ENGINE	Penumbra ENGINE Canister
SEP6	Separator 6	.055 (1.40)	175	CAT6	IAPS3 – Now!	Penumbra ENGINE Canister	Penumbra ENGINE
SEP5	Separator 5	.045 (1.14)	175	CAT5			
SEP3	Separator 3	.028 (.71)	190	CAT3			
SEPD	Separator D	.072 (1.83)	90	CATD			

Prior to use, please refer to the Instructions for Use for complete product indications, contraindications, warnings, precautions, potential adverse events, and detailed instructions for use.

INDIGO Aspiration System – Intended Use

The INDIGO Aspiration System is intended for the removal of fresh, soft emboli and thrombi from vessels of the peripheral arterial and venous systems and certain central circulatory system conditions such as pulmonary emboli using continuous aspiration.

Potential Adverse Events

Possible complications include, but are not limited to, the following: allergic reaction and anaphylaxis from contrast media; acute occlusion; air embolism; arteriovenous fistula; death; device malfunction; distal embolization; emboli; false aneurysm formation; hematoma or hemorrhage at access site; inability to completely remove thrombus; infection; hemorrhage; ischemia; kidney damage from contrast media; neurological deficits including stroke; vessel spasm, thrombosis, dissection, or perforation; intimal disruption; myocardial infarction; emergent surgery; fibrillation; hypotension; respiratory failure; peripheral thromboembolic events.

PENUMBRA ENGINE – Intended Use

The PENUMBRA ENGINE is intended as a vacuum source for Penumbra Aspiration Systems.



Penumbra Europe GmbH
 Am Borsigturm 44
 13507 Berlin
 Germany
 T +49 30 2005 676-0
 F +49 30 2005 676-10
 de-order@penumbrainc.com
 info@penumbrainc.de

Penumbra, Inc. USA
 One Penumbra Place
 Alameda, CA 94502
 USA
 1.888.272.4606
 T 1.510.748.3200
 F 1.510.748.3232
 order@penumbrainc.com
 info@penumbrainc.com

Product availability varies by country. Renderings are for illustrative purposes only. The clinical results presented herein are for informational purposes only, and may not be predictive for all patients. Images used with permission. Consent on file at Penumbra, Inc. Individual results may vary depending on a variety of patient-specific attributes. Please contact your local Penumbra representative for more information.

Copyright ©2019–2020 Penumbra, Inc. All rights reserved. The Penumbra P logos, Indigo, CAT, Separator, and Penumbra ENGINE are registered trademarks or trademarks of Penumbra, Inc. in the USA and other countries. 15462, Rev. B 06/20 EU