

3-LUMEN PAPILOTOME

FOR PRECISE WIRE GUIDANCE AND CANNULATION

Positioning, cannulation and resection are the decisive features of a safe and successful papillotomy. The 3-lumen papillotome from MICRO-TECH meets these requirements in every way: Emerging from the working channel in the correct position, the atraumatic tip, tapered to 5 Fr, supports cannulation and the resection is done reliably at the "11 o'clock" marker. Maximum safety during resection

is also provided by optional proximal insulation of the cutting wire. The three lumens for cutting wire, guide wire and contrast media provide for a high level of safety and efficient contrast injection. Thanks to the ergonomic 3-ring grip handle, this papillotome is highly user-friendly and easy to control.

SPECIFIC CHARACTERISTICS

- 3 lumen for guide wire, cutting wire and contrast injection
- Optional insulation of proximal cutting wire
- Cutting direction at 11 o'clock
- Filliform tip, tapered to 5 Fr
- Working length: 2,000 mm
- Outer diameter: 2,5 mm
- Guide wire compatible fully mobile up to 0.035 inch



Precise adjustment function

Tip: Precut

Tip: Needle knife



SPECIFICATIONS

REF	Tip length mm	Cutting wire length mm	Partly insulated cutting wire	Preloaded guide wire	Ø working channel mm
PAPILOTOME, 3-LUMEN, CONE-TIP					
DSP-30020-11111	0	20	No	No	2.8
DSP-30020-11121	0	20	Yes	No	2.8
DSP-30025-11111	0	25	No	No	2.8
DSP-30025-11121	0	25	Yes	No	2.8
DSP-30030-11111	0	30	No	No	2.8
DSP-30030-11121	0	30	Yes	No	2.8
DSP-30020-11111	2	20	No	No	2.8
DSP-30020-11121	2	20	Yes	No	2.8
DSP-30025-11111	2	25	No	No	2.8
DSP-30025-11121	2	25	Yes	No	2.8
DSP-30030-11111	2	30	No	No	2.8
DSP-30030-11121	2	30	Yes	No	2.8
DSP-30020-11111	5	20	No	No	2.8
DSP-30020-11121	5	20	Yes	No	2.8
DSP-30025-11111	5	25	No	No	2.8
DSP-30025-11121	5	25	Yes	No	2.8
DSP-30030-11111	5	30	No	No	2.8
DSP-30030-11121	5	30	Yes	No	2.8
DSP-30020-11111	0	20	No	Yes	2.8
DSP-30020-11121	0	20	Yes	Yes	2.8
DSP-30025-11111	0	25	No	Yes	2.8
DSP-30025-11121	0	25	Yes	Yes	2.8
DSP-30030-11111	0	30	No	Yes	2.8
DSP-30030-11121	0	30	Yes	Yes	2.8
DSP-30020-11111	2	20	No	Yes	2.8
DSP-30020-11121	2	20	Yes	Yes	2.8
DSP-30025-11111	2	25	No	Yes	2.8
DSP-30025-11121	2	25	Yes	Yes	2.8
DSP-30030-11111	2	30	No	Yes	2.8
DSP-30030-11121	2	30	Yes	Yes	2.8
PAPILOTOME, 3-LUMEN, NEEDLE KNIFE					
DSP-30505-12111	0	5	No	No	2.8
DSP-30505-12121	0	5	Yes	No	2.8
DSP-30507-12111	0	7	No	No	2.8
DSP-30507-12121	0	7	Yes	No	2.8

Recommended guide wires 0.035": MTN-BW 89/45-A (straight), 600358-5 (straight), 600359-5 (J-Tip)
 Recommended guide wires 0.025": MTN-BW 63/26-A (straight) and 600384-5 (straight)
 Packaging unit: 2 pieces

STONE EXTRACTION BALLOONS

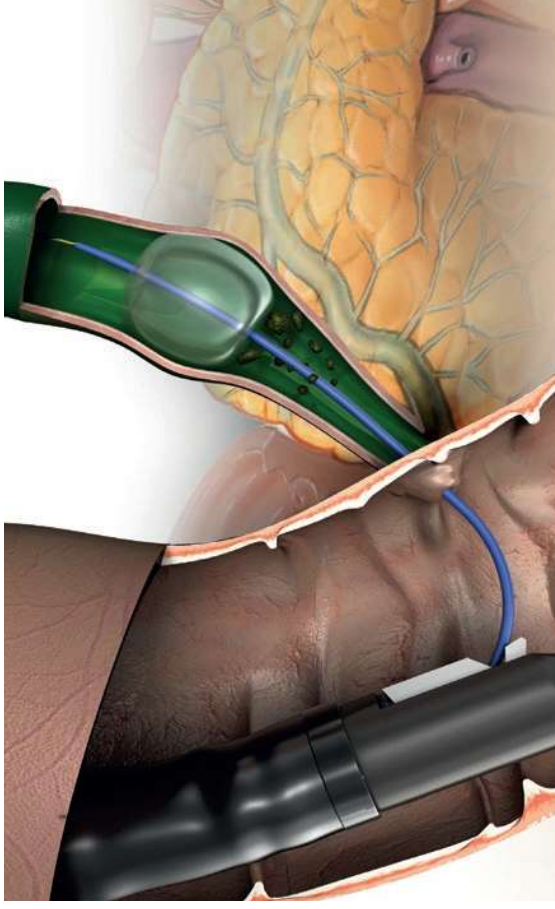
ONE BALLOON, THREE DIAMETERS

MICRO-TECH's vast product range includes high-quality 3-lumen extraction balloons for reliable removal of small stones and sludge from the bile duct. The conical, atraumatic tip of the catheter makes for easy, precise positioning using the two x-ray markers. The cylindrical balloon itself is made of high-quality latex and can be expanded to three different diameters. A specially calibrated single-use

syringe is supplied for each balloon diameter. Following insufflation, the balloon surface lies flat against the bile duct wall, enabling efficient and complete cleaning of the bile duct. A separate lumen for a 0.035 inch guidewire and one for contrast media, provide for ease of handling and contrast injection.

SPECIFIC CHARACTERISTICS

- 3-stage balloons
- One calibrated tip per diameter
- 3 lumens for insufflation, guidewire and contrast agent
- High X-ray visibility (radiopacity)



SPECIFICATIONS

REF	Ø inches	Total length mm	Tip length mm	Tip form	Set-up	Covering
CLASSIC GUIDE WIRE						
600382-5	0.035"	4200	130	straight	hydrophilic, radiopaque	extra stiff
STONE EXTRACTION BALLOONS						
REF	Injection		Lumen	Catheter Ø Fr.	Balloon Ø mm	Working length mm
SRB-T-9/12/15-20	Above (distal to the balloon)	3	7	9 / 12 / 15	2000	
SRB-T-12/15/18-20	Above (distal to the balloon)	3	7	12 / 15 / 18	2000	
SRB-T-15/18/21-20	Above (distal to the balloon)	3	7	15 / 18 / 21	2000	
SRB-T-9/12/15-20-B	Below (proximal to the balloon)	3	7	9 / 12 / 15	2000	
SRB-T-12/15/18-20-B	Below (proximal to the balloon)	3	7	12 / 15 / 18	2000	
SRB-T-15/18/21-20-B	Below (proximal to the balloon)	3	7	15 / 18 / 21	2000	

Recommended guidewires: MTN-BM 89/45-A (0.035 straight) and 600388-5 (0.035 straight)
Packaging unit: 1 piece



3-lumen stone extraction balloon from MICRO-TECH

SPECIFICATIONS

REF	Form	Features	Ø basket mm
DISPOSABLE BASKETS, PULL ROPE LENGTH 200 CM			
BK1-B10-25-23-200	Vario	multifilament, 150°-rotation, protection head	15 / 25
BK1-B10-30-23-200	Vario	multifilament, 150°-rotation, protection head	20 / 30
BK1-B20-20-23-200	Hexagonal	multifilament, 4 rope, protection head	20
BK1-B20-25-23-200	Hexagonal	multifilament, 4 rope, protection head	25
BK1-B20-30-23-200	Hexagonal	multifilament, 4 rope, protection head	30
BK1-B20-35-23-200	Hexagonal	multifilament, 4 rope, protection head	35
BK1-B21-35-23-200	Hexagonal	4 rope, half coiled	35
BK1-B22-20-23-200	Hexagonal	4 rope, full coiled	20
BK1-B22-25-23-200	Hexagonal	4 rope, full coiled	25
BK1-B22-30-23-200	Hexagonal	4 rope, full coiled	30
BK1-B22-35-23-200	Hexagonal	4 rope, full coiled	35
DISPOSABLE GUIDEWIRE BASKETS, PULL ROPE LENGTH 200 CM			
BK1-B90-25-27-200	Combi-hexagonal	multifilament, retractable tip	15 / 25
DISPOSABLE LITHOTRIPSY BASKETS, PULL ROPE LENGTH 400 CM			
LT1-B10-25-23-400	Vario	multifilament, 150°-rotation, retractable tip	15 / 25
LT1-B10-30-23-400	Vario	multifilament, 150°-rotation, retractable tip	20 / 30
LT1-B20-20-23-400	Hexagonal	multifilament, retractable tip	20
LT1-B20-25-23-400	Hexagonal	multifilament, retractable tip	25
LT1-B20-30-23-400	Hexagonal	multifilament, retractable tip	30
LT1-B20-35-23-400	Hexagonal	multifilament, retractable tip	35

Packaging unit: 5 pieces

BASKET EXTRACTOR

REMOVE FOREIGN OBJECTS SAFELY AND EFFECTIVELY

The extraction baskets from Bauer medical are not only suitable for stone extraction in the bile duct, but also for use in the upper and lower intestinal tract for the safe recovery and removal of foreign bodies such as marbles, batteries or mouth fitting toys. The rotation of the Vario basket ensures safe and reliable recovery of the foreign body.

SPECIFIC CHARACTERISTICS

- Fixed pre-determined breaking point
- Smooth wire with optimized gliding quality
- Ergonomic grip for improved tactile feeling
- Stone extractor basket with atraumatic tip
- Vario basket

Atraumatic tip gentle to working channel and mucosa

Highly mobile grip for precision insertion and extraction

PLASTIC BILE DUCT STENTS

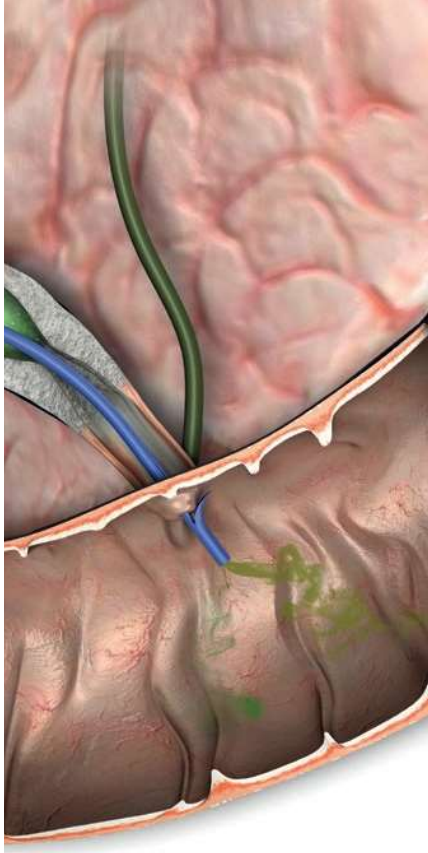
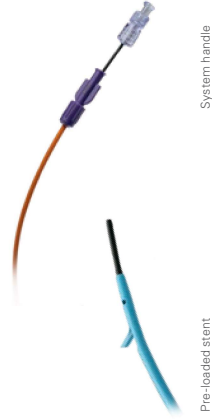
MAXIMUM DRAINAGE, MAXIMUM HOLD

MICRO-TECH offers a comprehensive range of plastic stents for short and medium-term drainage in the bile duct. The stents are available in different shapes, lengths and diameters. Thus, the ideal stent is available for each indication. The high-quality PE-/PTFE-material of the stents ensures reliable drainage and adapts optimally

to the anatomy of the patient. Flaps at the ends of the stents also ensure a secure hold with minimal migration. For rapid and safe implantation, the stents are available both individually and on pre-loaded systems. In addition, MICRO-TECH also offers introduction-systems in all relevant sizes.

SPECIFIC CHARACTERISTICS

- Different shapes: straight, curved, angled, pigtail, double-pigtail and christmas tree
- Optimum flow rate
- Ideal adaptation to anatomy
- Safe hold, minimal migration
- Available single-packed or pre-loaded on introduction-system
- High x-ray visibility



SPECIFICATIONS

STENT STRAIGHT



- Shape: straight
- 2 flaps
- 2 side-holes
- X-ray visible
- Material: PE

Working length	Diameter bile duct prosthesis				
	7FR	8.5FR	10FR	11.5FR	
5 cm	BPDS-31114-0705	BPDS-31114-0805	BPDS-31114-1005	BPDS-31114-1105	
6 cm	BPDS-31114-0706	BPDS-31114-0806	BPDS-31114-1006	BPDS-31114-1106	
7 cm	BPDS-31114-0707	BPDS-31114-0807	BPDS-31114-1007	BPDS-31114-1107	
8 cm	BPDS-31114-0708	BPDS-31114-0808	BPDS-31114-1008	BPDS-31114-1108	
9 cm	BPDS-31114-0709	BPDS-31114-0809	BPDS-31114-1009	BPDS-31114-1109	
10 cm	BPDS-31114-0710	BPDS-31114-0810	BPDS-31114-1010	BPDS-31114-1110	
11 cm	BPDS-31114-0711	BPDS-31114-0811	BPDS-31114-1011	BPDS-31114-1111	
12 cm	BPDS-31114-0712	BPDS-31114-0812	BPDS-31114-1012	BPDS-31114-1112	
13 cm	BPDS-31114-0713	BPDS-31114-0813	BPDS-31114-1013	BPDS-31114-1113	
14 cm	BPDS-31114-0714	BPDS-31114-0814	BPDS-31114-1014	BPDS-31114-1114	
15 cm	BPDS-31114-0715	BPDS-31114-0815	BPDS-31114-1015	BPDS-31114-1115	

SPECIFICATIONS

STENT CURVED



- Shape: 15° curved
- 2 flaps
- 2 side-holes
- X-ray visible
- Material: PE

Working length	Diameter bile duct prosthesis		
	7FR	8.5FR	10FR
5 cm	BPDS-32114-0705	BPDS-32114-0805	BPDS-32114-1005
6 cm	BPDS-32114-0706	BPDS-32114-0806	BPDS-32114-1006
7 cm	BPDS-32114-0707	BPDS-32114-0807	BPDS-32114-1007
8 cm	BPDS-32114-0708	BPDS-32114-0808	BPDS-32114-1008
9 cm	BPDS-32114-0709	BPDS-32114-0809	BPDS-32114-1009
10 cm	BPDS-32114-0710	BPDS-32114-0810	BPDS-32114-1109
11 cm	BPDS-32114-0711	BPDS-32114-0811	BPDS-32114-1111
12 cm	BPDS-32114-0712	BPDS-32114-0812	BPDS-32114-1112
13 cm	BPDS-32114-0713	BPDS-32114-0813	BPDS-32114-1113
14 cm	BPDS-32114-0714	BPDS-32114-0814	BPDS-32114-1114
15 cm	BPDS-32114-0715	BPDS-32114-0815	BPDS-32114-1115

SPECIFICATIONS

STENT LATERAL ANGLED



- Form: 45° lateral angled
- 2 flaps
- 2 side-holes
- X-ray visible
- Material: PE

Working length	Diameter bile duct prosthesis		
	7FR	8.5FR	10FR
5 cm	BPDS-33114-0705	BPDS-33114-0805	BPDS-33114-1005
6 cm	BPDS-33114-0706	BPDS-33114-0806	BPDS-33114-1006
7 cm	BPDS-33114-0707	BPDS-33114-0807	BPDS-33114-1007
8 cm	BPDS-33114-0708	BPDS-33114-0808	BPDS-33114-1008
9 cm	BPDS-33114-0709	BPDS-33114-0809	BPDS-33114-1009
10 cm	BPDS-33114-0710	BPDS-33114-0810	BPDS-33114-1010
11 cm	BPDS-33114-0711	BPDS-33114-0811	BPDS-33114-1109
12 cm	BPDS-33114-0712	BPDS-33114-0812	BPDS-33114-1111
13 cm	BPDS-33114-0713	BPDS-33114-0813	BPDS-33114-1113
14 cm	BPDS-33114-0714	BPDS-33114-0814	BPDS-33114-1114
15 cm	BPDS-33114-0715	BPDS-33114-0815	BPDS-33114-1115

SPECIFICATIONS

STENT CENTRAL ANGLED



- Shape: 90° central angled
- 2 flaps
- 2 side-holes
- X-ray visible
- Material: PE

Working length	Diameter bile duct prosthesis		
	7FR	8.5FR	10FR
5 cm	BPDS-34114-0705	BPDS-34114-0805	BPDS-34114-1005
6 cm	BPDS-34114-0706	BPDS-34114-0806	BPDS-34114-1006
7 cm	BPDS-34114-0707	BPDS-34114-0807	BPDS-34114-1007
8 cm	BPDS-34114-0708	BPDS-34114-0808	BPDS-34114-1008
9 cm	BPDS-34114-0709	BPDS-34114-0809	BPDS-34114-1009
10 cm	BPDS-34114-0710	BPDS-34114-0810	BPDS-34114-1010
11 cm	BPDS-34114-0711	BPDS-34114-0811	BPDS-34114-1011
12 cm	BPDS-34114-0712	BPDS-34114-0812	BPDS-34114-1112
13 cm	BPDS-34114-0713	BPDS-34114-0813	BPDS-34114-1113
14 cm	BPDS-34114-0714	BPDS-34114-0814	BPDS-34114-1114
15 cm	BPDS-34114-0715	BPDS-34114-0815	BPDS-34114-1115

SPECIFICATIONS

PIGTAIL DOUBLE



- Shape: Pigtail
- Double
- 4 side-holes
- X-ray visible
- Material: PE

Working length	Diameter bile duct prosthesis		
	7FR	8.5FR	10FR
5 cm	BPDS-31993-0705	BPDS-31993-0805	BPDS-31993-1005
6 cm	BPDS-31993-0706	BPDS-31993-0806	BPDS-31993-1006
7 cm	BPDS-31993-0707	BPDS-31993-0807	BPDS-31993-1007
8 cm	BPDS-31993-0708	BPDS-31993-0808	BPDS-31993-1008
9 cm	BPDS-31993-0709	BPDS-31993-0809	BPDS-31993-1009
10 cm	BPDS-31993-0710	BPDS-31993-0810	BPDS-31993-1010
11 cm	BPDS-31993-0711	BPDS-31993-0811	BPDS-31993-1011
12 cm	BPDS-31993-0712	BPDS-31993-0812	BPDS-31993-1112
13 cm	BPDS-31993-0713	BPDS-31993-0813	BPDS-31993-1113
14 cm	BPDS-31993-0714	BPDS-31993-0814	BPDS-31993-1114
15 cm	BPDS-31993-0715	BPDS-31993-0815	BPDS-31993-1115

SPECIFICATIONS

PIGTAIL DISTAL



- Shape: Pigtail
- Distal
- 2 side-holes
- X-ray visible
- Material: PE

SPECIFICATIONS

PIGTAIL PROXIMAL



- Shape: Pigtail
- Proximal
- 2 side-holes
- X-ray visible
- Material: PE

SPECIFICATIONS

CHRISTMAS TREE



- Shape: Christmas Tree
- 4 flaps per end
- 2 side-holes
- X-ray visible
- Material: PTFE

Working length	Diameter bile duct prosthesis	
	8.5FR	10FR
5 cm	BPDS-31196-0805	BPDS-31196-1005
6 cm	BPDS-31196-0806	BPDS-31196-1006
7 cm	BPDS-31196-0807	BPDS-31196-1007
8 cm	BPDS-31196-0808	BPDS-31196-1008
9 cm	BPDS-31196-0809	BPDS-31196-1009
10 cm	BPDS-31196-0810	BPDS-31196-1010
11 cm	BPDS-31196-0811	BPDS-31196-1011
12 cm	BPDS-31196-0812	BPDS-31196-1012
13 cm	BPDS-31196-0813	BPDS-31196-1013
14 cm	BPDS-31196-0814	BPDS-31196-1014
15 cm	BPDS-31196-0815	BPDS-31196-1015

Working length	Diameter bile duct prosthesis	
	8.5FR	10FR
5 cm	BPDS-31916-0805	BPDS-31916-1005
6 cm	BPDS-31916-0806	BPDS-31916-1006
7 cm	BPDS-31916-0807	BPDS-31916-1007
8 cm	BPDS-31916-0808	BPDS-31916-1008
9 cm	BPDS-31916-0809	BPDS-31916-1009
10 cm	BPDS-31916-0810	BPDS-31916-1010
11 cm	BPDS-31916-0811	BPDS-31916-1011
12 cm	BPDS-31916-0812	BPDS-31916-1012
13 cm	BPDS-31916-0813	BPDS-31916-1013
14 cm	BPDS-31916-0814	BPDS-31916-1014
15 cm	BPDS-31916-0815	BPDS-31916-1015

Working length	Diameter bile duct prosthesis	
	8.5FR	10FR
5 cm	BPDS-13442-0805	BPDS-13442-1005
6 cm	BPDS-13442-0806	BPDS-13442-1006
7 cm	BPDS-13442-0807	BPDS-13442-1007
8 cm	BPDS-13442-0808	BPDS-13442-1008
9 cm	BPDS-13442-0809	BPDS-13442-1009
10 cm	BPDS-13442-0810	BPDS-13442-1010
11 cm	BPDS-13442-0811	BPDS-13442-1011
12 cm	BPDS-13442-0812	BPDS-13442-1012
13 cm	BPDS-13442-0813	BPDS-13442-1013
14 cm	BPDS-13442-0814	BPDS-13442-1014
15 cm	BPDS-13442-0815	BPDS-13442-1015

INTRODUCER-SYSTEMS WITHOUT STENT

SPECIFICATIONS



- One step introducer-system
- X-ray visible

New: Extended guide catheter

REF	Ø catheter	Guide catheter	Introducer length
BPDI-0740/22	7 FR	40 cm	220 cm
BPDI-0840/22	8.5 FR	40 cm	220 cm
BPDI-1040/22	10 FR	40 cm	220 cm
BPDI-1140/22	11.5 FR	40 cm	220 cm

INTRODUCER-SYSTEMS WITH PRE-LOADED STENT



- One step introducer-system
- X-ray visible

SPECIFICATIONS

STENT STRAIGHT



- Shape: straight
- 2 flaps
- 2 side-holes
- X-ray visible
- Material: PE

REF	Ø catheter	Stent working/total length	Introducer length
BPDS-31114-0805/22	8.5 FR	5 / 7 cm	220 cm
BPDS-31114-0807/22	8.5 FR	7 / 9 cm	220 cm
BPDS-31114-0809/22	8.5 FR	9 / 11 cm	220 cm
BPDS-31114-0811/22	8.5 FR	11 / 13 cm	220 cm
BPDS-31114-1005/22	10 FR	5 / 7 cm	220 cm
BPDS-31114-1007/22	10 FR	7 / 9 cm	220 cm
BPDS-31114-1009/22	10 FR	9 / 11 cm	220 cm
BPDS-31114-1011/22	10 FR	11 / 13 cm	220 cm

SPECIFICATIONS

STENT CURVED



- Shape: 15° curved
- 2 flaps
- 2 side-holes
- X-ray visible
- Material: PE

REF	Ø catheter	Stent working/total length	Introducer length
BPDS-32114-0805/22	8.5 FR	5 / 7 cm	220 cm
BPDS-32114-0807/22	8.5 FR	7 / 9 cm	220 cm
BPDS-32114-0809/22	8.5 FR	9 / 11 cm	220 cm
BPDS-32114-0811/22	8.5 FR	11 / 13 cm	220 cm
BPDS-32114-1005/22	10 FR	5 / 7 cm	220 cm
BPDS-32114-1007/22	10 FR	7 / 9 cm	220 cm
BPDS-32114-1009/22	10 FR	9 / 11 cm	220 cm
BPDS-32114-1011/22	10 FR	11 / 13 cm	220 cm

MULTI-STAGE DILATION BALLOONS

THREE DIAMETERS, ONE BALLOON

The multi-stage dilation balloon from MICRO-TECH facilitates simple and reliable dilation of stenoses. Each balloon can be expanded to three different, fixed diameters for progressive dilation of stenosis in three pre-defined stages. The pressure is distributed evenly over the entire working length of the balloon at every diameter. The

rounded tips enable a good endoscopic view of the stenosis, even during dilation, ensuring controlled, safe intervention and good therapeutic success. Thanks to the preloaded stiffed wire with its flexible, hydrophilic, radiopaque tip, the balloons are readily introduced and are then rapidly deflated after successful dilation.

SPECIFIC CHARACTERISTICS

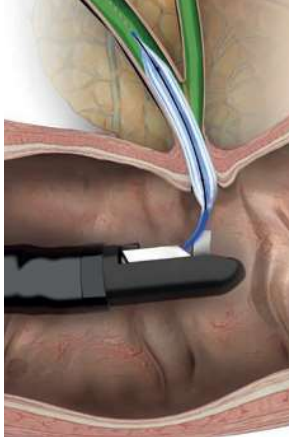
- Three different diameters with three separate pressure levels
- 2 X-ray markers on opposite ends to indicate the exact working length of the balloon
- Rounded Balloon shoulders for clear endoscopic view of the balloon's distal end
- Conical, atraumatic catheter tip
- Preloaded stiffed wire with hydrophilic, radiopaque tip



Separate openings for stiffed wire and insufflation

SINGLE-USE INFLATION-INSTRUMENT

Sturdy construction and an ergonomic handle for easy control. With quick-lock mechanism for one-handed deflation, even under full pressure. The clear cylinder and the easy to read scale allow for a close look at the content and the amount. The exact gauge guarantees reliable pressure measurement.



SPECIFICATIONS

REF	Content ml air/liquid	Max. pressure ATM	Feature		
SINGLE-USE INFLATION-INSTRUMENT					
BID-15-60-01	60	15	3-way-stopcock		
MULTI-STAGE DILATION BALLOONS					
REF	Balloon Ø mm	Balloon 3-stagedilation pressure (atm)	Balloon length mm	Catheter Ø fr.	Catheter length mm
MBD-AS-BB-2	6/7/8	3/6/10	30	7	2300
MBD-AM-BA-2	6/7/8	3/6/10	55	7	1800
MBD-AM-BB-2	6/7/8	3/6/10	55	7	2300
MBD-AL-BA-2	6/7/8	3/6/10	80	7	1800
MBD-BS-BB-2	8/9/10	3/5.5/9	30	7	2300
MBD-BM-BA-2	8/9/10	3/5.5/9	55	7	1800
MBD-BM-BB-2	8/9/10	3/5.5/9	55	7	2300
MBD-BL-BA-2	8/9/10	3/5.5/9	80	7	1800
MBD-CS-BB-2	10/11/12	3/5/8	30	7	2300
MBD-CM-BA-2	10/11/12	3/5/8	55	7	1800
MBD-CM-BB-2	10/11/12	3/5/8	55	7	2300
MBD-CL-BA-2	10/11/12	3/5/8	80	7	1800
MBD-DS-BB-2	12/13.5/15	3/4.5/8	30	7	2300
MBD-DM-BA-2	12/13.5/15	3/4.5/8	55	7	1800
MBD-DM-BB-2	12/13.5/15	3/4.5/8	55	7	2300
MBD-DL-BA-2	12/13.5/15	3/4.5/8	80	7	1800
MBD-EW-BA-2	15/16.5/18	3/4.5/7	55	7	1800
MBD-EW-BB-2	15/16.5/18	3/4.5/7	55	7	2300
MBD-EL-BA-2	15/16.5/18	3/4.5/7	80	7	1800
MBD-FM-BA-2	18/19/20	3/4.5/6	55	7	1800
MBD-FM-BB-2	18/19/20	3/4.5/6	55	7	2300
MBD-FL-BA-2	18/19/20	3/4.5/6	80	7	1800

Packaging unit: 1 piece / suitable for guide wires with 0.035"

HIGH QUALITY COATING

A choice of an uncoated and coated metal coil is available. Additional markings are provided on the coating to facilitate orientation during use.

RAPID IDENTIFICATION

The forceps components have different colour codes for quick identification and choice of application field.

Handle:

- white – toothed cutting edge
- grey – smooth cutting edge

Jaw section protective cap:

- red – with spike
- yellow – without spike

Coating:

- grey – bronchial forceps
Ø 1.8 mm, 120 cm long
- yellow – paediatric forceps
Ø 1.8 mm, 180 cm long
- orange – gastric forceps
Ø 2.3 mm, 180 cm long
- blue – colon forceps
Ø 2.3 mm, 230 cm long
- orange or blue – macro forceps
Ø 3.0 mm, 180 und 230 cm long

SPECIFICATIONS

REF MACRO FORCEPS

REF	Ø mm	Length mm	Spike	Covering	Jaw
NBF01-01030180	3.0	1800	No	Without	Standard
NBF01-01030230	3.0	2300	No	Without	Standard
NBF01-01130180	3.0	1800	Yes	Without	Standard
NBF01-01130230	3.0	2300	Yes	Without	Standard
NBF03-01030180	3.0	1800	No	Orange	Standard
NBF03-01030230	3.0	2300	No	Blue	Standard
NBF03-01130180	3.0	1800	Yes	Orange	Standard
NBF03-01130230	3.0	2300	Yes	Blue	Standard
TRUBITE					
EBF51-11023180	2.3	1800	No	Without	Standard
EBF51-11023230	2.3	2300	No	Without	Standard
EBF51-1123180	2.3	1800	Yes	Without	Standard
EBF51-1123230	2.3	2300	Yes	Without	Standard
EBF53-11023180	2.3	1800	No	Orange	Standard
EBF53-11023230	2.3	2300	No	Blue	Standard
EBF53-1123180	2.3	1800	Yes	Orange	Standard
EBF53-1123230	2.3	2300	Yes	Blue	Standard

Packaging unit: 10 pieces

Also available as hot-biopsy forceps

