



SILICONE ENDOTRACHEAL TUBE

100% Silicone for Great Comfort and Flexibility



ANESTHETIC
SERIES

SILICONE ENDOTRACHEAL TUBE

Fortune[®] Silicone Endotracheal Tube is made of 100% medical grade silicone. It provides superior bio-compatibility and flexibility. Great transparency allows easy visual inspection. Graduation and X-ray opaque line help depth and location confirmation. A pilot balloon is equipped to monitor balloon status. Low pressure cuff models are available to reduce the pressure on trachea wall and to provide greater comfort to patient.

- A** Silicone Endotracheal Tube, Cuffless
- B** Silicone Endotracheal Tube, OC Type
- C** Silicone Endotracheal Tube, LC Type
- D** Silicone Endotracheal Tube, OW Type
- E** Silicone Endotracheal Tube, LW Type



SPECIFICATIONS

Endotracheal Tube, Cuffless:

PED-Magill REF. No.	Size/I.D.	O.D.	Length	Description
1510-0025	2.5 mm	4.0 mm	140 mm	
1510-0030	3.0 mm	4.7 mm	160 mm	Magill Series: Magill tip
1510-0035	3.5 mm	5.3 mm	180 mm	Cuffless
1510-0040	4.0 mm	6.0 mm	200 mm	Wire reinforced
1510-0045	4.5 mm	6.7 mm	220 mm	Graduation
1510-0050	5.0 mm	7.3 mm	240 mm	X-ray opaque line



1510-00XX

SILICONE ENDOTRACHEAL TUBE

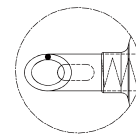
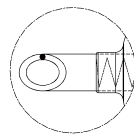
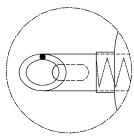
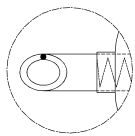
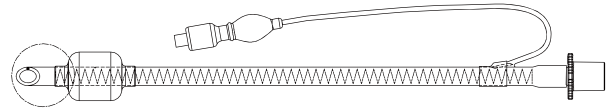
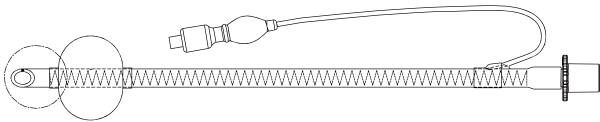
Endotracheal Tube, OW Type (Ordinary cuff, Wire reinforced):

OW-Magill REF. No	OW- Murphy REF. No.	Size/I.D.	O.D.	Length	Description
1540-0045	1545-0045	4.5 mm	6.7 mm	220 mm	
1540-0050	1545-0050	5.0 mm	7.3 mm	240 mm	
1540-0055	1545-0055	5.5 mm	8.0 mm	270 mm	
1540-0060	1545-0060	6.0 mm	8.7 mm	280 mm	*OW-Magill series: Magill tip
1540-0065	1545-0065	6.5 mm	9.3 mm	290 mm	*OW-Murphy series: Murphy eye
1540-0070	1545-0070	7.0 mm	10.0 mm	300 mm	
1540-0075	1545-0075	7.5 mm	10.7 mm	310 mm	Ordinary cuff Wire reinforced
1540-0080	1545-0080	8.0 mm	11.3 mm	320 mm	Graduation Pilot balloon
1540-0085	1545-0085	8.5 mm	12.0 mm	330 mm	
1540-0090	1545-0090	9.0 mm	12.7 mm	340 mm	
1540-0095	1545-0095	9.5 mm	13.3 mm	350 mm	
1540-0100	1545-0100	10.0 mm	14.0 mm	360 mm	

Endotracheal Tube, LW Type (Low pressure cuff, Wire reinforced):

LW-Magill REF. No	LW-Murphy REF. No.	Size/I.D.	O.D.	Length	Description
1550-0045	1555-0045	4.5 mm	6.7 mm	220 mm	
1550-0050	1555-0050	5.0 mm	7.3 mm	240 mm	
1550-0055	1555-0055	5.5 mm	8.0 mm	270 mm	*LW-Magill series: Magill tip
1550-0060	1555-0060	6.0 mm	8.7 mm	280 mm	*LW-Murphy series: Murphy eye
1550-0065	1555-0065	6.5 mm	9.3 mm	290 mm	
1550-0070	1555-0070	7.0 mm	10.0 mm	300 mm	
1550-0075	1555-0075	7.5 mm	10.7 mm	310 mm	Low pressure cuff Wire reinforced
1550-0080	1555-0080	8.0 mm	11.3 mm	320 mm	Graduation Pilot balloon
1550-0085	1555-0085	8.5 mm	12.0 mm	330 mm	
1550-0090	1555-0090	9.0 mm	12.7 mm	340 mm	
1550-0095	1555-0095	9.5 mm	13.3 mm	350 mm	
1550-0100	1555-0100	10.0 mm	14.0 mm	360 mm	

O: ordinary cuff, L: low pressure cuff, W: wire reinforced



1540-OXXX:LW-MAGILL

1545-OXXX:LW-MYRPHY

1550-OXXX:LW-MAGILL

1555-OXXX:LW-MYRPHY

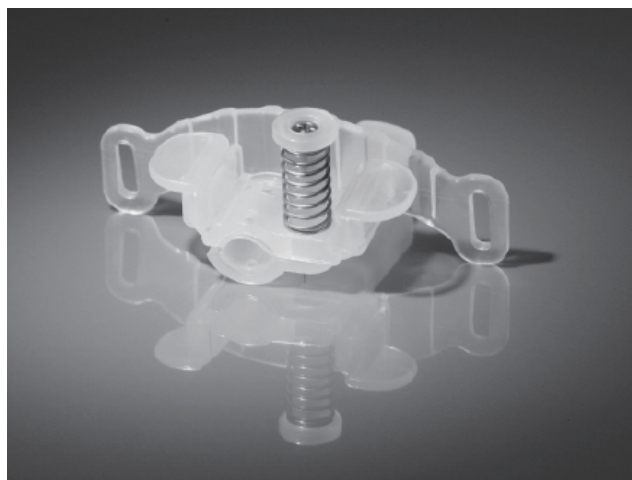
TRACHEAL TUBE FIXATION DEVICE

INTENDED USE:

The Fortune tracheal tube fixation device (hereinafter referred to as the fixer) is intended to be used to secure a tracheal tube in an appropriate position. It is easy to operate and enhances patient comfort.

FEATURES:

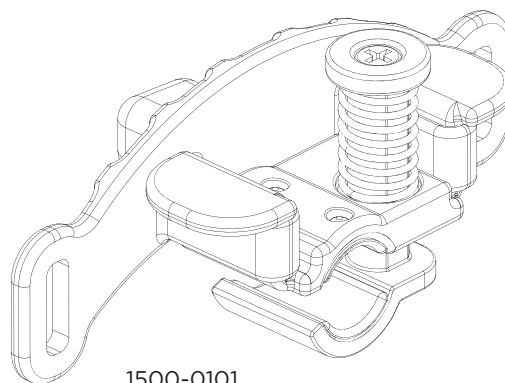
1. Easy to operate: quick to mount; efficiently prevents biting of the tube.
2. The anti-ulceration pad reduces the risk of ulcerated lips.
3. Smaller and shorter than artificial airways, the fixer's small size reduces the risk of damage to the patient's oral cavity.
4. The fixer's adjustable strap reduces the risk of skin damage. The strap is designed with patient comfort in mind.



SPECIFICATIONS

Designed to match tracheal tubes with outer diameter (O.D.) from 8.0 mm to 12.0 mm.

Fortune Tracheal tube	size	O.D. (mm)	I.D. (mm)
	0060 26FR	8.7	6.0
1520 series,	0065 28FR	9.3	6.5
1525 series,			
1530 series,	0070 30FR	10.0	7.0
1535 series,			
1540 series,	0075 32FR	10.7	7.5
1545 series,			
1550 series,	0080 34FR	11.3	8.0
1555 series,			
	0085 36FR	12.0	8.5
	0090 38FR	12.7	9.0



1500-0101



6 F., No. 29, Sec. 2, Jhongjheng E. Rd.,
 Danshuei Dist, New Taipei City. 251 Taiwan
 Tel.:(886) 2-2624-2233 Fax.:(886) 2-2624-2266
 www.fortunemed.com Mail:info@fortunemed.com

Distribuitor autorizat in Moldova



www.ericon.md

Tel:0-22-520108

mob.079410042

FONDAT 1992

15,Zelinski str.
 Chişinău, MOLDOVA