

DECLARATION OF CONFORMITY (MDD)

1. Name and address of the firm
 ASAHI INTECC CO., LTD. Medical Division
 3-100 Akatsuki-cho, Seto, Aichi 489-0071 JAPAN

We declare under our sole responsibility that
 the medical device

..... (Name) ASAHI PTCA Guide Wire
 (Series) AG, AGH, and AGP series
 (Model) Refer to Table 1
 (Serial of Lot No.)
 From 93075-10011 to
 Name, type or model, batch or serial number, possibly source and number of items

of Class

..... III
 According to Rule 7 in annex IX of directive 93/42/EEC

meets all the provisions of the directive 93/42/EEC which apply it.

2. EC Design Examination Certificate No. 2107788DE01
 Issued by DEKRA Certification B. V. (Notified under No. 0344)
 Arnhem, The Netherlands

3. CE Marking of Conformity Certificate No. 2107788CE01
 Issued by DEKRA Certification B. V. (Notified under No. 0344)
 Arnhem, The Netherlands

4. Manufacturing Facility
 (1) ASAHI INTECC CO., LTD. Medical Division
 3-100 Akatsuki-cho, Seto, Aichi 489-0071 JAPAN
 (2) ASAHI INTECC (THAILAND) CO., LTD.
 158/1 Moo 5, Bangkadi Industrial Park Tiwanon Road, Tambol Bangkadi
 Amphur Muang Pathumthani 12000 Thailand
 (3) ASAHI INTECC HANOI CO., LTD.
 THANG LONG Industrial Park Dong Anh District Hanoi Vietnam

5. Authorized representative in EU Emergo Europe
 Prinsessegracht 20, 2514 AP The Hague, The Netherlands

6. Applied harmonized standards, national
 standards or other normative documents Refer to Table 2 and 3

7. Conformity assessment procedure Based on Medical Devices Directive 93/42/EEC Annex II.3 and 4

8. Signature of Manufacturer

3-100 Akatsuki-cho, Seto, Aichi 489-0071 JAPAN

November 20, 2019

Place, Date

..... 
 Yasuyuki Kawahara,
 General Manager
 Quality Assurance Division
 ASAHI INTECC CO., LTD.

Table 1 Model of ASAHI PTCA Guide Wire

Catalog No.	Brand Name	Catalog No.	Brand Name
AG141000	Soft	AG143090	Conquest
AG141000J	Soft J		Confianza
			CONFIANZA
AG141300	Soft 300cm	AG143090J	Conquest J
AG141300J	Soft 300cm J		Confianza J
			CONFIANZA J
AG141002	Grand Slam	AG143390	Conquest 300cm
AG141002J	Grand Slam J		Confianza 300cm
			CONFIANZA 300cm
AG141302	Grand Slam 300cm	AG143390J	Conquest 300cm J
AG141302J	Grand Slam 300cm J		Confianza 300cm J
			CONFIANZA 300cm J
AG142000	Intermediate	AGH143090	Conquest Pro
	Medium		Confianza Pro
	MEDIUM		CONFINAZA PRO
AG142000J	Intermediate J	AGH143090J	Conquest Pro J
	Medium J		Confianza Pro J
	MEDIUM J		CONFIANZA PRO J
AG142300	Intermediate 300cm	AGH143390	Conquest Pro 300cm
	Medium 300cm		Confianza Pro 300cm
	MEDIUM 300cm		CONFIANZA PRO 300cm
AG142300J	Intermediate 300cm J	AGH143390J	Conquest Pro 300cm J
	Medium 300cm J		Confianza Pro 300cm J
	MEDIUM 300cm J		CONFIANZA PRO 300cm J
AG143000	Standard	AGH143091	Conquest Pro 12
AG143000J	Standard J		Confianza Pro 12
			CONFIANZA PRO 12
AG143300	Standard 300cm	AGH143091J	Conquest Pro 12 J
AG143300J	Standard 300cm J		Confianza Pro 12 J
			CONFIANZA PRO 12 J
AG145000	Light	AGH143391	Conquest Pro 12 300cm
AG145000J	Light J		Confianza Pro 12 300cm
			CONFIANZA PRO 12 300cm
AG145300	Light 300cm	AGH143391J	Conquest Pro 12 300cm J
AG145300J	Light 300cm J		Confianza Pro 12 300cm J
			CONFIANZA PRO 12 300cm J
AG14M050	Miracle 3	AGH146000	Rinato
	Miraclebros 3		Prowater
	MIRACLEbros 3		PROWATER
AG14M050J	Miracle 3 J	AGH146000J	Rinato J
	Miraclebros 3 J		Prowater J
	MIRACLEbros 3 J		PROWATER J
AG14M350	Miracle 3 300cm	AGH146300	Rinato 300cm
	Miraclebros 3 300cm		Prowater 300cm
	MIRACLEbros 3 300cm		PROWATER 300cm
AG14M350J	Miracle 3 300cm J	AGH146300J	Rinato 300cm J
	Miraclebros 3 300cm J		Prowater 300cm J
	MIRACLEbros 3 300cm J		PROWATER 300cm J
AG14M045	Miracle 4.5	AGH147000	Prowaterflex
	Miraclebros 4.5		Route
	MIRACLEbros 4.5		PROWATERflex
AG14M045J	Miracle 4.5 J	AGH147000J	Prowaterflex J
	Miraclebros 4.5 J		Route J
	MIRACLEbros 4.5 J		PROWATERflex J
AG14M345	Miracle 4.5 300cm	AGH147300	Prowaterflex 300cm
	Miraclebros 4.5 300cm		Route 300cm
	MIRACLEbros 4.5 300cm		PROWATERflex 300cm

AG14M345J	Miracle 4.5 300cm J	AGH147300J	Prowaterflex 300cm J
	Miraclebros 4.5 300cm J		Route 300cm J
	MIRACLEbros 4.5 300cm J		PROWATERflex 300cm J
AG14M060	Miracle 6	AHW14S003S	ULTIMATEbros 3
	Miraclebros 6	AHW14S003J	ULTIMATEbros 3 J
	MIRACLEbros 6		
AG14M060J	Miracle 6 J	AHW14S303S	ULTIMATEbros 3 300cm
	Miraclebros 6 J	AHW14S303J	ULTIMATEbros 3 300cm J
	MIRACLEbros 6 J		
AG14M360	Miracle 6 300cm	AGP140000	Fielder
	Miraclebros 6 300cm	AGP140000J	Fielder J
	MIRACLEbros 6 300cm		
AG14M360J	Miracle 6 300cm J	AGP140300	Fielder 300cm
	Miraclebros 6 300cm J	AGP140300J	Fielder 300cm J
	MIRACLEbros 6 300cm J		
AG14M070	Miracle 12	AGP140001	Fielder FC
	Miraclebros 12	AGP140001J	Fielder FC J
	MIRACLEbros 12		
AG14M070J	Miracle 12 J	AGP140301	Fielder FC 300cm
	Miraclebros 12 J	AGP140301J	Fielder FC 300cm J
	MIRACLEbros 12 J		
AG14M370	Miracle 12 300cm	AGP140002	Fielder XT
	Miraclebros 12 300cm	AGP140302	Fielder XT 300cm
	MIRACLEbros 12 300cm		
AG14M370J	Miracle 12 300cm J		
	Miraclebros 12 300cm J		
	MIRACLEbros 12 300cm J		

Table 2 Applied harmonized standards (QA-Related Standards)

Standard Reference	Title
EN ISO 13485:2016 AC:2016 ISO 13485:2016	Medical devices -- Quality management systems -- Requirements for regulatory purposes
EC Directive 93/42/EEC 1993 Amd 1: 1998 Amd 2: 2000 Amd 3: 2002 Amd 4: 2003 Amd 5: 2007	Medical Devices Directive (2007)

Table 3 Applied harmonized standards (Product related standards)

Standard Reference	Title
EN 556-1:2001 AC: 2006	Sterilization of medical devices - Requirements for medical devices to be designated "STERILE"- Part 1: Requirements for terminally sterilized medical devices
EN ISO 15223-1: 2016 Cor1:2017/Cor2:2017 ISO 15223-1: 2016 Cor1:2016/Cor2:2017	Medical devices-Symbols to be used with medical device labels, labeling and information to be supplied –Part1: General requirements
EN 1041:2008 Amd1:2013	Information supplied by the manufacturer of medical devices
EN 62366-1:2015 Cor:2016	Medical devices – <u>Part1</u> : Application of usability engineering to medical devices
EN 980:2008	Symbols for Use in the Labeling of Medical Devices
EN ISO 10993-1: 2009 AC: 2010 ISO 10993-1: 2009 Cor1: 2010	Biological evaluation of medical devices – Part 1: Evaluation and testing within a risk management process
EN ISO 10993-2: 2006 ISO 10993-2: 2006	Biological evaluation of medical devices – Part 2: Animal welfare requirements
EN ISO 10993-4: 2017 ISO 10993-4: 2017	Biological evaluation of medical devices – Part 4: Selection of tests for interactions with blood
EN ISO 10993-5: 2009 ISO 10993-5: 2009	Biological evaluation of medical devices – Part 5: Tests for in vitro cytotoxicity
EN ISO 10993-7: 2008 AC:2009 ISO 10993-7: 2008 Cor1:2009	Biological evaluation of medical devices – Part 7: Ethylene oxide sterilization residuals
EN ISO 10993-10: 2013 ISO 10993-10: 2010	Biological evaluation of medical devices – Part 10: Tests for irritation and skin sensitization
EN ISO 10993-11: 2018 ISO 10993-11: 2017	Biological evaluation of medical devices – Part 11: Tests for systemic toxicity
EN ISO 10993-12: 2012 ISO 10993-12: 2012	Biological evaluation of medical devices – Part 12: Sample preparation and reference materials

Standard Reference	Title
EN ISO 11070: 2014 A1:2018 ISO 11070: 2014 A1:2018	Sterile single-use intravascular introducers, dilators and guidewires
EN ISO 11135: 2014 ISO 11135: 2014 A1:2018	Sterilization of health-care products - Ethylene oxide - Requirements for the development, validation and routine control of a sterilization process for medical devices
EN ISO 11138-1: 2017 ISO 11138-1: 2017	Sterilization of health care products -- Biological indicators -- Part 1: General requirements
EN ISO 11138-2: 2017 ISO 11138-2: 2017	Sterilization of health care products -- Biological indicators -- Part 2: Biological indicators for ethylene oxide sterilization processes
EN ISO 11138-7:2019 ISO 11138-7:2019	Sterilization of Health Care Products - Biological Indicators - Part 7: Guidance for the Selection, Use and Interpretation of Results
EN ISO 11607-1: 2017 ISO 11607-1: 2006 Amd1:2014	Packaging for terminally sterilized medical devices Part 1: Requirements for materials, sterile barrier systems and packaging systems
EN ISO 11607-2: 2017 ISO 11607-2: 2006 Amd1:2014	Packaging for terminally sterilized medical devices Part 2: Validation requirements for forming, sealing and assembly processes
EN ISO 11737-1: 2018 C: 2018 ISO 11737-1: 2018	Sterilization of health care products – Microbiological methods – Part 1: Determination of a population of microorganisms on products
EN ISO 11737-2: 2009 ISO 11737-2: 2009	Sterilization of medical devices – Microbiological methods -- Part 2: Tests of sterility performed in the definition, validation and maintenance of a sterilization process
EN ISO 14155: 2011 AC:2011 ISO 14155: 2011 Cor1:2011	Clinical investigation of medical devices for human subjects – Good clinical practice
EN ISO 14644-1: 2015 ISO 14644-1: 2015	Cleanrooms and Associated Controlled Environments - Part 1: Classification of Air Cleanliness by particle concentration
EN ISO 14644-2: 2015 ISO 14644-2: 2015	Cleanrooms and Associated Controlled Environments - Part 2: Monitoring to provide evidence of cleanroom performance related to air cleanliness by particle concentration
EN ISO 14644-3: 2005 ISO 14644-3: 2005	Cleanrooms and associated controlled environments - Part 3: Test methods
EN ISO 14698-1: 2003 Cor1:2003 ISO 14698-1: 2003	Cleanrooms and associated controlled environments Biocontamination control - Part 1: General principles and methods
EN ISO 14698-2: 2003 AC: 2006 ISO 14698-2: 2003 Cor1: 2004	Cleanrooms and associated controlled environments Biocontamination control - Part 2: Evaluation and interpretation of biocontamination data
EN ISO 14971: 2012 ISO 14971: 2007	Medical devices – Application of risk management to medical devices
MEDDEV. 2.12-1: 2013	GUIDELINES ON A MEDICAL DEVICES VIGILANCE SYSTEM
MEDDEV. 2.7/1: 2016	CLINICAL EVALUATION: A GUIDE FOR MANUFACTURERS AND NOTIFIED BODIES UNDER DIRECTIVES 93/42/EEC and 90/385/EEC
MEDDEV. 2.12-2: 2012	POST MARKET CLINICAL FOLLOW-UP STUDIES

Certificate of Registration

QUALITY MANAGEMENT SYSTEM - ISO 13485:2016 & EN ISO 13485:2016

This is to certify that:

ASAHI INTECC HANOI CO., LTD.
Thang Long Industrial Park,
Dong Anh District,
Hanoi,
Vietnam

Holds Certificate Number:

MD 718982

and operates a Quality Management System which complies with the requirements of ISO 13485:2016 & EN ISO 13485:2016 for the following scope:

The design, development, manufacture, EtO sterilization and distribution of Catheters and Guidewires



For and on behalf of BSI:

Gary E Slack, Senior Vice President - Medical Devices

Original Registration Date: 2019-12-28

Latest Revision Date: 2021-07-08

Effective Date: 2021-07-08

Expiry Date: 2024-07-07

Page: 1 of 2



...making excellence a habit.™

Certificate No: **MD 718982**

Location	Registered Activities
ASAHI INTECC HANOI CO., LTD. Thang Long Industrial Park, Dong Anh District, Hanoi, Vietnam	The design, development, manufacture and distribution activities of Catheter and Guidewire including EtO gas sterilization. The manufacture of PTFE coated component and microbiological testing are performed



Original Registration Date: 2019-12-28
Latest Revision Date: 2021-07-08

Effective Date: 2021-07-08
Expiry Date: 2024-07-07

This certificate was issued electronically and remains the property of BSI and is bound by the conditions of contract.
An electronic certificate can be authenticated [online](#).
Printed copies can be validated at www.bsigroup.com/ClientDirectory

ASAHI

PTCA Guide Wire

ASAHI

PTCA Guide Wire

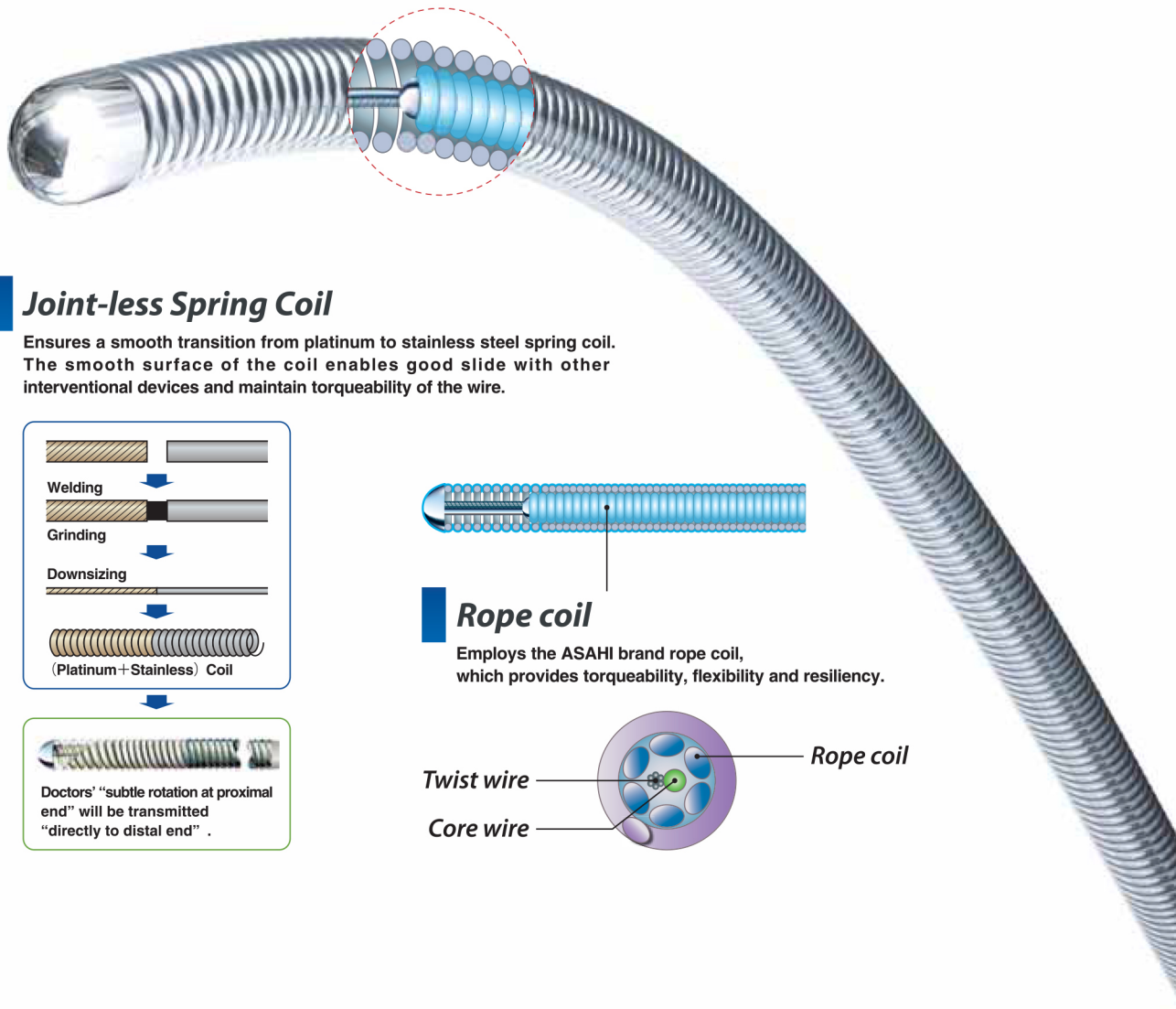
The Right Wire for Any Case

The reliability of the products is highly recognized by its users in the medical profession.

Composite Core

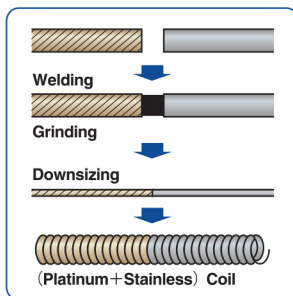
Multiple wire components to enhance durability and torque transmission.

- ASAHI SION
- ASAHI SION blue

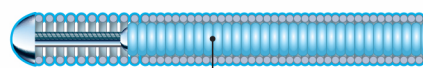


Joint-less Spring Coil

Ensures a smooth transition from platinum to stainless steel spring coil. The smooth surface of the coil enables good slide with other interventional devices and maintain torqueability of the wire.

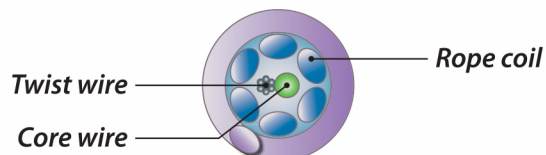


Doctors' "subtle rotation at proximal end" will be transmitted "directly to distal end".



Rope coil

Employs the ASAHI brand rope coil, which provides torqueability, flexibility and resiliency.



Tip Design

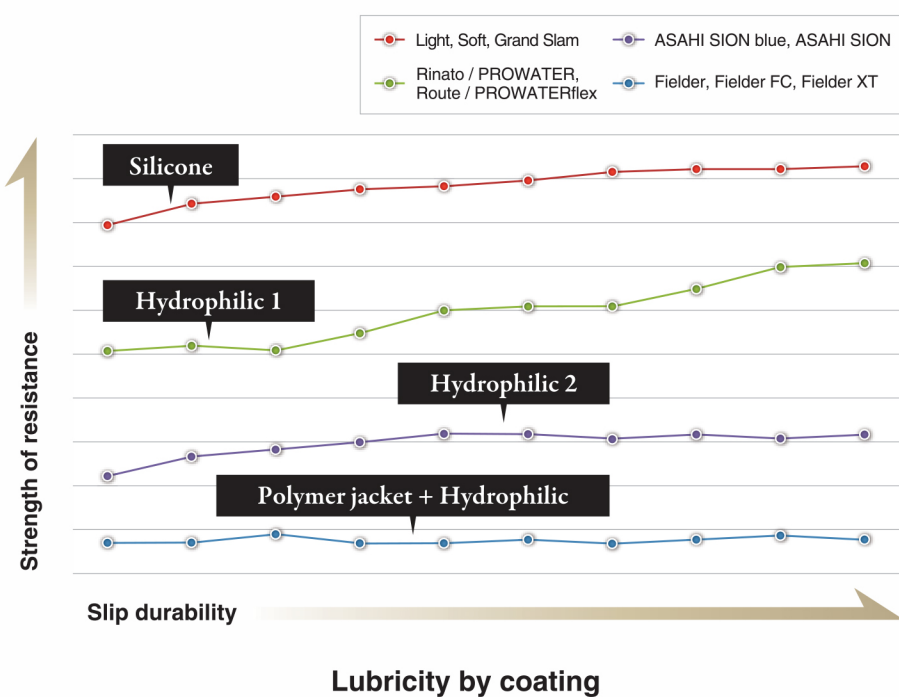
A variety of tip designs to facilitate branch selection or penetration ability. Asahi offers the right wire for any lesion.

One-Piece Core Wire

One-Piece Core Wire supports the entire guidewire from the proximal to the distal end. This design transmits the guidewire torque from one end to the other without loss.

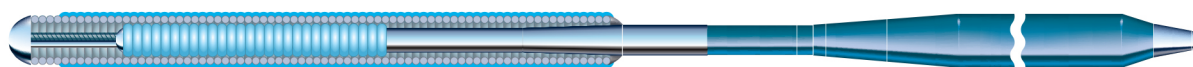
Coatings

A variety of coatings provide either superior lubricity, tactile feedback, or an optimal combination of the two.



Frontline Guidewires / Coil / Composite core

ASAHI SION blue



- Tip load 0.5 g
- Tip radiopacity 3 cm
- SLIP-COAT® coating over the spring coil
- PTFE coating over the shaft

First choice guidewire with proprietary composite core construction for greater tip flexibility and support performance. Silicone coating for 15mm from tip for safer procedures. Easily-discernible shaft color for differentiation from other ASAHI wires.

ASAHI SION

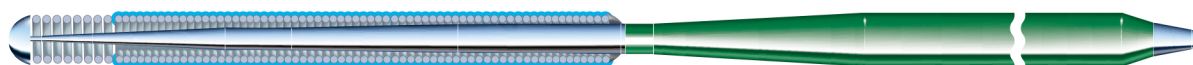


- Tip load 0.7 g
- Tip radiopacity 3 cm
- SLIP-COAT® coating over the spring coil
- PTFE coating over the shaft

First choice guidewire with proprietary composite core construction for excellent tip durability and torque performance in tight anatomy. Flexible shaft and atraumatic tip for stress-free operation.

Frontline Guidewires / Coil

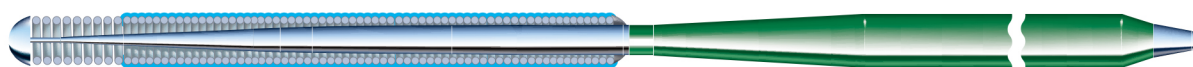
Rinato / PROWATER



- Tip load 0.8 g
- Tip radiopacity 3 cm
- SLIP-COAT® coating over the spring coil
- PTFE coating over the shaft

First choice guidewire with floppy tip and moderate core wire support. Excellent maneuverability and good support for device delivery.

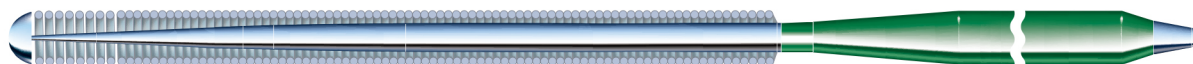
Route / PROWATERflex



- Tip load 0.8 g
- Tip radiopacity 3 cm
- SLIP-COAT® coating over the spring coil
- PTFE coating over the shaft

First choice guidewire featuring a soft tip with good shaping memory and excellent guidewire trackability. Sufficient support for delivery of most interventional devices.

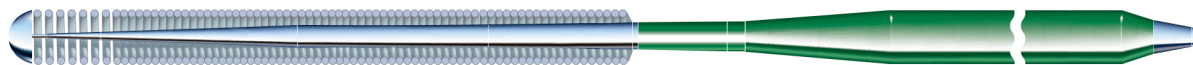
Soft



- Tip load 0.7 g
- Tip radiopacity 3 cm
- PTFE coating over the shaft

Basic frontline guidewire with floppy tip and non hydrophilic coating to ensure optimal tactile feedback.

Light



- Tip load 0.5 g
- Tip radiopacity 3 cm
- PTFE coating over the shaft

Basic frontline guidewire with a flexible core and good torqueability for distal side branch selection.

Frontline Guidewires / Polymer jacket

Fielder



- Tip load 1.0 g
- Tip radiopacity 3 cm
- Polymer sleeve length 22 cm
- SLIP-COAT® coating over the spring coil
- PTFE coating over the shaft

A polymer sleeve guidewire, providing advanced slip performance and trackability.

Fielder FC



- Tip load 0.8 g
- Tip radiopacity 3 cm
- Polymer sleeve length 20 cm
- SLIP-COAT® coating over the spring coil
- PTFE coating over the shaft

Fine control over challenging tortuous vessels and highly stenosed lesions. Polymer sleeve provides advanced slip performance with superior torque and support.

Fielder XT



- Tip load 0.8 g
- Tip radiopacity 16 cm
- Polymer sleeve length 16 cm
- Tip outer diameter 0.23 mm (0.009 inch)
- SLIP-COAT® coating over the spring coil
- PTFE coating over the shaft

Polymer sleeve, providing excellent lubricity and trackability in tortuous vessels. The tapered tip provides extreme precision for the treatment of complex lesions such as sub-total occlusions and long diffused lesions.

Others

Grand Slam



- Tip load 0.7 g
- Tip radiopacity 4 cm
- PTFE coating over the shaft

Stiff wire shaft provides extra support for delivery of interventional devices in extreme cases.

Extension 150 cm / 165 cm

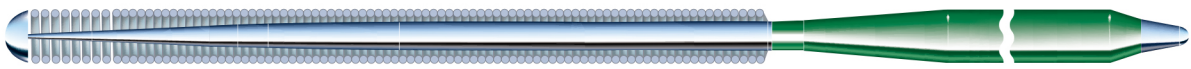


Compatible with all PTCA Guide Wires.

*Extension is 「ASAHI Extension Wire Extension」.

Chronic Occlusion Guidewires

Intermediate / MEDIUM



- Tip load 3.0 g
- Tip radiopacity 3 cm
- PTFE coating over the shaft

First choice wire for chronic occlusion cases.

ULTIMATEbros 3



- Tip load 3.0 g
- Tip radiopacity 11 cm
- SLIP-COAT® coating over the shaft

Long hydrophilic coating maintains high maneuverability, allowing for improved wire manipulation in heavy stenosed lesions. Fine shaping improves vessel selectivity and reduces the risk of false lumen expansion.

Miracle 3 / MIRACLEbros 3



- Tip load 3.0 g
- Tip radiopacity 11 cm
- PTFE coating over the shaft

First choice wire for chronic occlusion cases. The core wire and distal coil are designed to resist great force thus lowering the chances of getting trapped in a lesion.

Miracle 4.5 / MIRACLEbros 4.5



- Tip load 4.5 g
- Tip radiopacity 11 cm
- PTFE coating over the shaft

A step up in tip stiffness from the Miracle 3.

Miracle 6 / MIRACLEbros 6



- Tip load 6.0 g
- Tip radiopacity 11 cm
- PTFE coating over the shaft

A step up in tip stiffness from the Miracle 4.5. The wire has a tip load of 6g and has high driving force against tight lesions.

Miracle 12 / MIRACLEbros 12

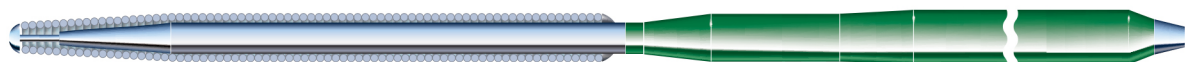


- Tip load 12.0 g
- Tip radiopacity 11 cm
- PTFE coating over the shaft

A tip load of 12g. It is indicated for complex chronic occlusion cases such as thick, hard fibrous caps and calcification.

Chronic Occlusion Guidewires

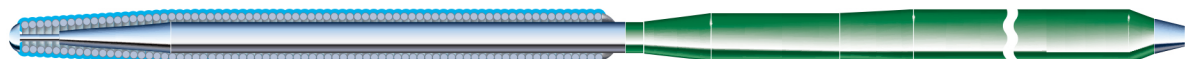
Conquest / CONFIANZA



- Tip load 9.0 g
- Tip radiopacity 20 cm
- Tip outer diameter 0.23 mm (0.009 inch)
- PTFE coating over the shaft

Non hydrophilic coated and tapered to 0.23mm (0.009inch) at the tip. The 9g stiff, tapered tip helps to engage micro channels and to penetrate highly stenosed lesions.

Conquest Pro / CONFIANZA PRO



- Tip load 9.0 g
- Tip radiopacity 20 cm
- Tip outer diameter 0.23 mm (0.009 inch)
- SLIP-COAT® coating over the spring coil
- PTFE coating over the shaft

Similar structure and tip stiffness as Conquest with SLIP-COAT® coating for lubricity. The distal tip is not coated to allow it to catch on the entry point of the lesions.

Conquest Pro 12 / CONFIANZA PRO 12



- Tip load 12.0 g
- Tip radiopacity 20 cm
- Tip outer diameter 0.23 mm (0.009 inch)
- SLIP-COAT® coating over the spring coil
- PTFE coating over the shaft

A tapered tip with 12g tip load. For penetration of calcification and proximal or distal thick, fibrous caps.

Guidewires for Externalization

ASAHI RG3

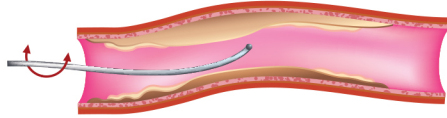


- Tip load 3.0 g
- Tip radiopacity 3 cm
- SLIP-COAT® coating over the shaft
- Shaft diameter 0.26 mm (0.010 inch)
- Guide wire length 330 cm

For guidewire externalization only . Optimal wire strength, hydrophilic coating and 0.26 mm (0.010 inch) shaft provide superior inside-catheter pushability. With the inner wall damage possibility reduced in tortuous vessels as well, the risk of complication is minimized.

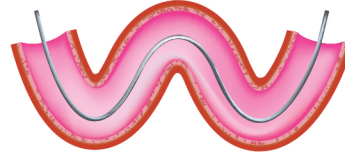
Recommended Use

Frontline Cases



FRONTLINE CASES

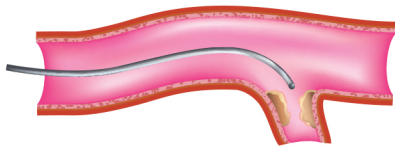
ASAHI SION, ASAHI SION blue,
Route / PROWATERflex,
Rinato / PROWATER, Soft, Light



TORTUOUS ANATOMY

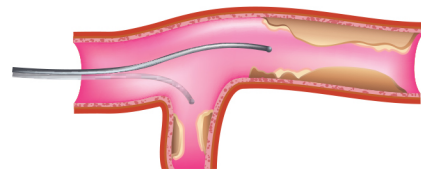
ASAHI SION, ASAHI SION blue,
Route / PROWATERflex, Fielder,
Fielder FC, Fielder XT

Side branch



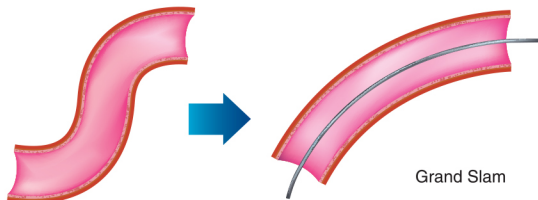
ASAHI SION, ASAHI SION blue,
Route / PROWATERflex,
Rinato / PROWATER,
Fielder, Fielder FC, Fielder XT

Multiple Lesion



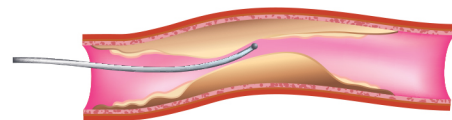
ASAHI SION, ASAHI SION blue

Extra Support Cases



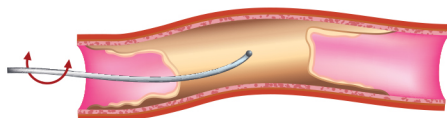
Grand Slam

Sub-Total Occlusion Cases



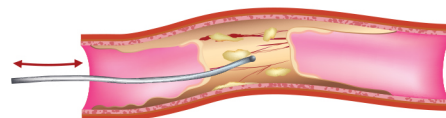
ASAHI SION, Fielder, Fielder FC, Fielder XT

Chronic Occlusion Cases



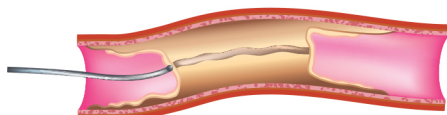
CONTROLLED DRILL

ULTIMATEbros 3
Miracle 3 / MIRACLEbros 3,
Miracle 4.5 / MIRACLEbros 4.5,
Miracle 6 / MIRACLEbros 6,
Miracle 12 / MIRACLEbros 12,
Intermediate / MEDIUM



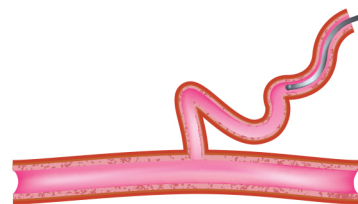
PENETRATION TECHNIQUE

Conquest / CONFIANZA,
Conquest Pro / CONFIANZA PRO,
Conquest Pro 12 / CONFIANZA PRO 12,
Miracle 12 / MIRACLEbros 12



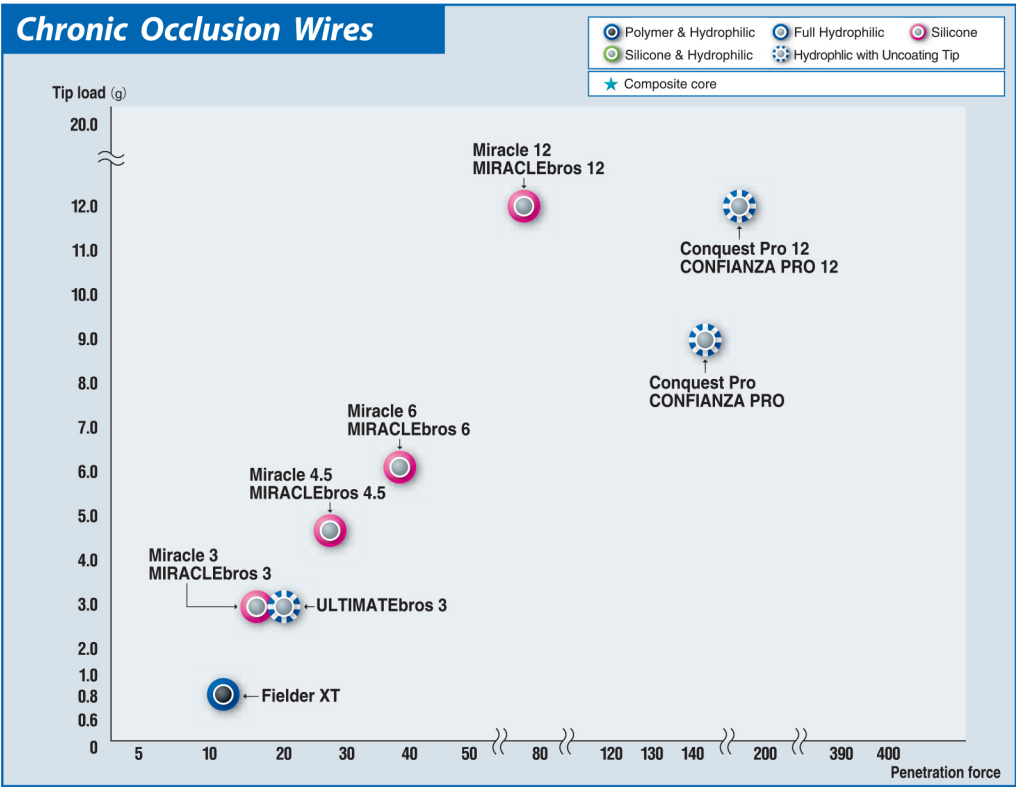
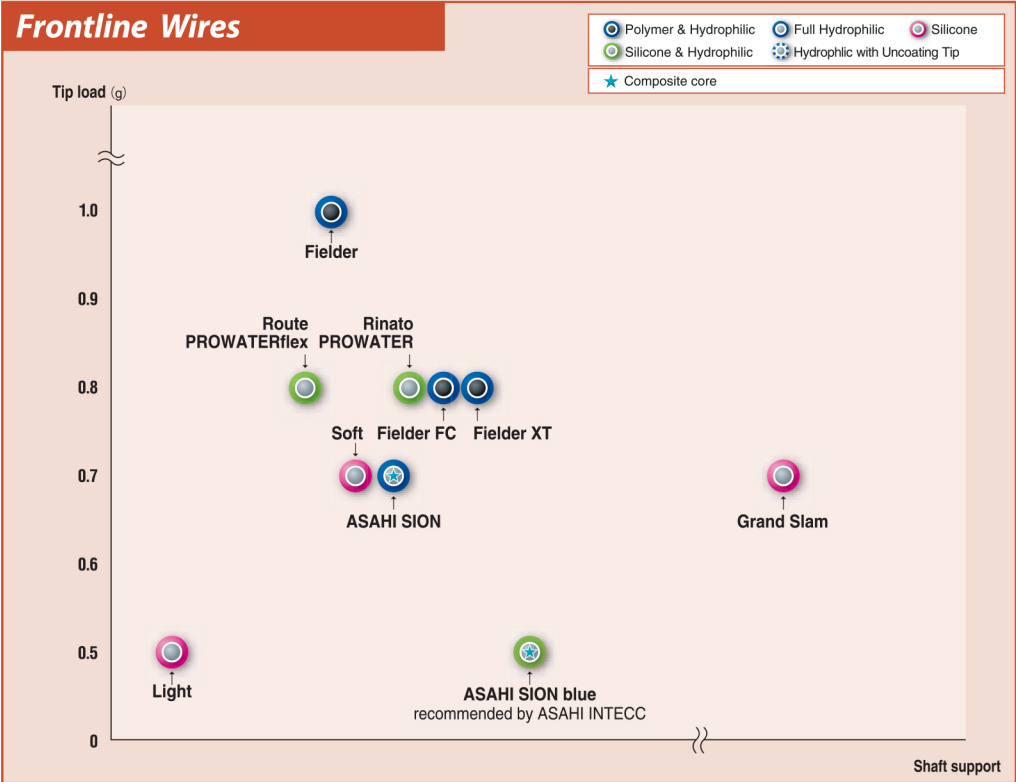
SLIDING TECHNIQUE

Fielder FC, Fielder XT



RETROGRADE APPROACH

ASAHI SION, Fielder FC, Fielder XT



Ordering Information

Product	Catalog No.	Diameter (mm (inch))	Radiopaque Segment (cm)	Spring Coil Length (cm)	Length (cm)	Tip Shape
ASAHI SION blue	AHW14R004S	0.36 (0.014)	3	20	180	Straight
	AHW14R304S	0.36 (0.014)	3	20	300	Straight
	AHW14R004J	0.36 (0.014)	3	20	180	J
	AHW14R304J	0.36 (0.014)	3	20	300	J
ASAHI SION	AHW14R001S	0.36 (0.014)	3	28	180	Straight
	AHW14R301S	0.36 (0.014)	3	28	300	Straight
	AHW14R001J	0.36 (0.014)	3	28	180	J
	AHW14R301J	0.36 (0.014)	3	28	300	J
Route / PROWATERflex	AGH147000	0.36 (0.014)	3	20	180	Straight
	AGH147300	0.36 (0.014)	3	20	300	Straight
	AGH147000J	0.36 (0.014)	3	20	180	J
Rinato / PROWATER	AGH146000	0.36 (0.014)	3	20	180	Straight
	AGH146300	0.36 (0.014)	3	20	300	Straight
	AGH146000J	0.36 (0.014)	3	20	180	J
	AGH146300J	0.36 (0.014)	3	20	300	J
Soft	AG141000	0.36 (0.014)	3	30	180	Straight
	AG141300	0.36 (0.014)	3	30	300	Straight
	AG141000J	0.36 (0.014)	3	30	180	J
Light	AG145000	0.36 (0.014)	3	20	180	Straight
	AG145300	0.36 (0.014)	3	20	300	Straight
	AG145000J	0.36 (0.014)	3	20	180	J
Fielder	AGP140000	0.36 (0.014)	3	12	180	Straight
	AGP140300	0.36 (0.014)	3	12	300	Straight
	AGP140000J	0.36 (0.014)	3	12	180	J
Fielder FC	AGP140001	0.36 (0.014)	3	11	180	Straight
	AGP140301	0.36 (0.014)	3	11	300	Straight
	AGP140001J	0.36 (0.014)	3	11	180	J
Fielder XT	AGP140002	0.23 / 0.36 (0.009 / 0.014)	16	16	190	Straight
	AGP140302	0.23 / 0.36 (0.009 / 0.014)	16	16	300	Straight
Intermediate / MEDIUM	AG142000	0.36 (0.014)	3	30	180	Straight
	AG142300	0.36 (0.014)	3	30	300	Straight
	AG142000J	0.36 (0.014)	3	30	180	J
Miracle 3 / MIRACLEbros 3	AG14M050	0.36 (0.014)	11	11	180	Straight
Miracle 4.5 / MIRACLEbros 4.5	AG14M045	0.36 (0.014)	11	11	180	Straight
Miracle 6 / MIRACLEbros 6	AG14M060	0.36 (0.014)	11	11	180	Straight
Miracle 12 / MIRACLEbros 12	AG14M070	0.36 (0.014)	11	11	180	Straight
ULTIMATEbros 3	AHW14S003S	0.36 (0.014)	11	11	180	Straight
	AHW14S303S	0.36 (0.014)	11	11	300	Straight
	AHW14S003J	0.36 (0.014)	11	11	180	J
	AHW14S303J	0.36 (0.014)	11	11	300	J
Conquest / CONFianza	AG143090	0.23 / 0.36 (0.009 / 0.014)	20	20	180	Straight
Conquest Pro / CONFianza PRO	AGH143090	0.23 / 0.36 (0.009 / 0.014)	20	20	180	Straight
Conquest Pro 12 / CONFianza PRO 12	AGH143091	0.23 / 0.36 (0.009 / 0.014)	20	20	180	Straight
Grand Slam	AG141002	0.36 (0.014)	4	4	180	Straight
	AG141302	0.36 (0.014)	4	4	300	Straight
	AG141002J	0.36 (0.014)	4	4	180	J
ASAHI RG3	AHW10S302S	0.26 (0.010)	3	8	330	Straight
*Extension 150cm	AG149000	0.36 (0.014)	—	—	150	—
*Extension 165cm	AG149001	0.36 (0.014)	—	—	165	—

*Extension is 「ASAHI Extension Wire Extension」.
Not all products and shapes are available in all markets. Please check availability with your sales representative.
Coated with SLIP-COAT® coating.
SLIP-COAT® is a trademark of Angiotech BioCoatings Corp. in the U.S. and /or other countries.



*ASAHI is a trademark or registered trademark of ASAHI INTECC CO., LTD. in Japan and other countries.

Manufactured by:



ASAHI INTECC CO.,LTD.
http://www.asahi-intecc.com



(55) 6719 3014 info@levbethmedical.com



www.vascularperspectives.com