

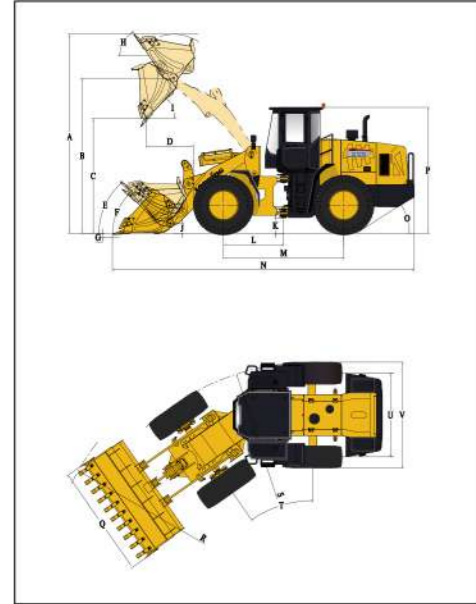
CDM860 WHEEL LOADER

Efficiency Rules the Future



DIMENSIONS

All dimensions are approximate. Dimensions may vary with bucket and tire choice. Refer to operating specifications.



NO.	DESCRIPTION	UNIT	DATE
A	Overall Height – Bucket Raised	mm	5988
B	Bucket Pin Height at Max. Lift	mm	4550
C	Dump Clearance at Max. Lift (45°)	mm	3411
D	Reach at Max. Lift and 45° Dump	mm	1206
E	Rack Back Angle at Carry	°	49
F	Rack Back Angle at Ground	°	44
G	Digging Depth	mm	60
H	Rack Back Angle at Max. Lift	°	54
I	Dump Angle at Max. Lift	°	45
J	Carry Height	mm	311
K	Ground Clearance	mm	432
L	Center Line of Front Axle to Hitch	mm	1700
M	Wheel Base	mm	3400
N	Overall Length	mm	8610
O	Departure Angle	°	28
P	Height to Top of Cab	mm	3430
Q	Overall Width over Bucket	mm	3050
R	Min. Turning Radius over Bucket	mm	7650
S	Min. Turning Radius over Tires	mm	6798
T	Steering Angle – Left/Right	°	35
U	Width at Tread Center	mm	2270
V	Overall Width over Tires	mm	2865

TECHNICAL PARAMETERS

Category	Parameter	Value
Basic	Bucket Capacity	3.5m ³
	Rated Payload	6000kg
	Operating Weight	21150kg
	Traction Force	175±3kN
	Breakout Force	200±3kN
	L×W×H	8610×3050×3430mm
Engine	Maker/Model	WEICHAI/WD10G240E21
	Rated Power	175kW/2200rpm
	Maximum Torque	920N·m/1300-1600rpm
	Bore x Stroke	126×130mm
	No. of Cylinders / Displacement	6/9.726L
	Air Cleaner	Three Stage Air Cleaner
	Alternator	55Amp
	Battery	2-24V/120Ah
	Starting Motor	24V/7.5kW
	DRIVE TRAIN	Transmission Type
Shift Type		Electronic Powershift Control
Pressure of Transmission		1.1-1.5MPa
Torque Converter Type		Single-stage&turbine,3-element
Axles		Rigid (Front)&Oscillating (Rear)
Rear Axle Oscillation		±10°
Differential		Conventional
Main Reducer		Spiral Bevel,1-stage Reduction
Final Reducer		Planetary Reduction
Tire		23.5-25 L-3 20PR TT
BRAKE SYSTEM	Service Brake	Single Circuit Caliper,Dry Brake
	Setting Pressure	0.70-0.78MPa
	Parking Brake	Hydraulic Actuated Drum Brake
	Emergency Brake	Hydraulic Actuated Drum Brake
STEERING SYSTEM	Type	Hydraulic Load Sensing System
	Pump	176L/min-2200rpm
	System Pressure	16MPa
	Cylinder Type	Double Acting
HYDRAULIC SYSTEM	Steering Angle	±35°
	Type	Joystick Control (Single-lever)
	Pump	275L/min-2200rpm
	Control Valve	2 Spool
SERVICE REFILL CAPACITY	System Pressure	16MPa
	Cycle Time (Sec)	11.8
	Fuel Tank	285L
	Hydraulic Tank	270/275(3rd Spool)L
	Crankshaft	20L
Transmission	32L	
Front Axle/Rear Axle	31L/31L	

CONFIGURATION

WEICHAI Engine
ZF Transmission
Electronic Powershift Control
LONKING Axles (Dry type)
Joystick Working Control (Single-lever)
Hydraulic Actuated Drum Brake
ROPS&FOPS Cabin
Combination Instrument
Air Conditioner

OPTIONAL

High Dump
Oil-bath Air Filter
Cold Starting(-35 °C)
Radial Tires
3rd Spool for Auxiliary Function
Sliding Cabin Window
Electric Heating Rear Window
Lockable Oil Tank Cap
Rear View Camera
Bucket(3 Piece Cutting Edges)
Rock Bucket(3.8m ³)
Coal Bucket(4.5m ³)
Enlarged Coal Bucket(5.0m ³)
Quick Hitch Coupler
Quick Hitch Bucket
Quick Hitch Coupler
Quick Hitch Fork
Quick Hitch Log Fork

For more information on Lonking products,
Please contact our local agent:

The following blank can be used for notes or comments.

Specifications and design are subject to change without prior notice.
Machines shown may not include optional accessories.

LONKING (FU JIAN) INTERNATIONAL TRADE CO.,LTD.
LONKING HOLDINGS LIMITED
Add:26 Minyi Road,Xinqiao,Songjiang Industrial Zone,Shanghai
Tel: +86-21-3760 2242 E-mail:export@lonking.cn
<http://www.lonkinggroup.com>

- OPERATING WEIGHT: 175kW/2200rpm
- ENGINE POWER: 3.5m³
- BUCKET CAPACITY: 6000kg
- TRAVEL SPEED: 21150kg