

FORBIS

Support presentation  
template  
2021-xx-xx

# Agenda

- Main working principles of <...>
- Preparation for <...>
- Status of Business analysis SRS documents
- Documentation deliverables provision dates
- Sign-off process of <...>
- Next deliverables plan
- Timeline of Deliverable <...>
- Assumptions and recommendations <...>
- Next actions

# Main working principles of <...>

- To organize workflow, the <...> shall:
- A)
- B)
- C)
- To prepare <...>, needed <...>.
- To use <...> for testing, check <...>.
- To simulate real action, follow <...>.
- <...>

# Preparation for <...>

1. <...>
2. <...>
3. <...>
4. <...>

# Status of Business analysis SRS documents

Date	2021.xx.xx		2021.xx.xx	
State	Amount	Status	Amount	Status
Provided documents	0	Under alignment – 0 Not reviewed – 0 Aligned - 0	0	Under alignment – 0 Not reviewed – 0 Aligned - 0
Documents under preparation or planed	0	... ...	... ...	

# Documentation deliverables provision dates

Document provision dates	xx.xx	xx.xx	xx.xx	xx.xx	xx.xx	xx.xx	xx.xx
Amount of documents	0	0	0	0	0	0	0

# Sign-off process of <...>

1

Is <...>  
matching?

**TODO:**

- <...>
- <...>

2

Has the <...>  
been  
completed?

**Confirmation by <...>**  
regarding <....>

3

Are there  
workarounds  
needed?

**NO / or TODO:**

- <...>
- <...>

4

Can the deliverable  
process continue?

**SIGN-OFF:**

Green light to  
proceed with <...>

## Next deliverables plan

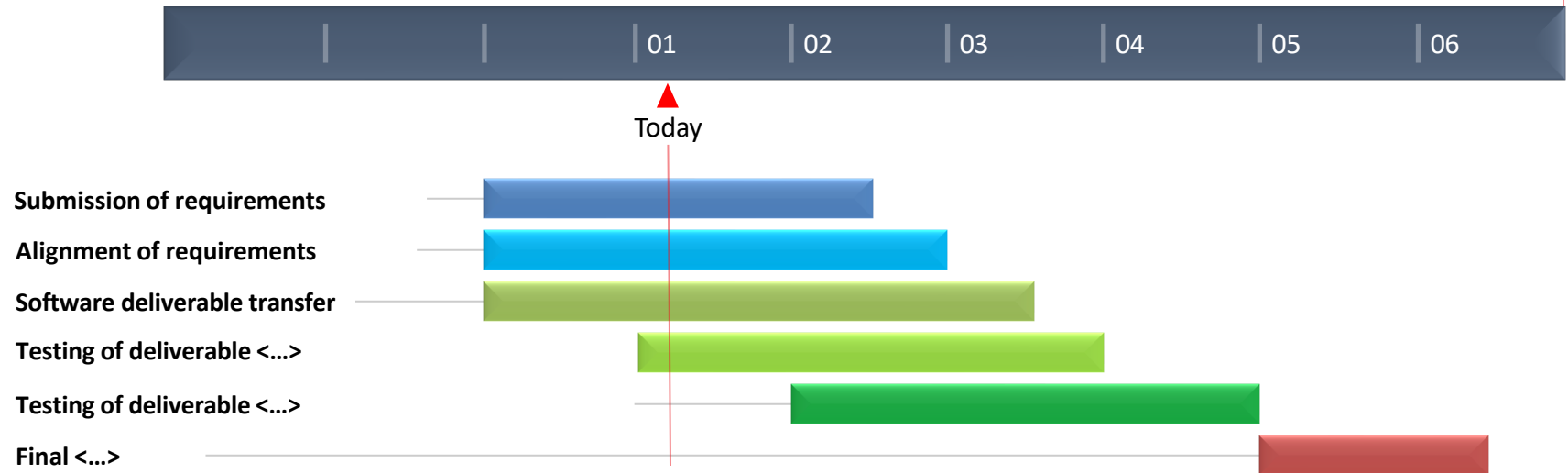
[illegible]



# Timeline of Deliverable <...>

xx/xx/2022

Decision




# Assumptions and recommendations <...>

- Create a <...>:
  - Align <...>
  - Perform <...>
- Control the <...>
- Organize <...>
- Inform <...>

# Next actions

- Arrange meeting on 2021.xx.xx
- Check status of <...> (responsible: <...>)
- Agree on <...> (responsible: <...>)
- Follow-up previously agreed actions in MM No. <...> :
  - Action <...> (responsible: <...>)
  - Action <...> (responsible: <...>)
  - Action <...> (responsible: <...>)

A decorative graphic consisting of a long vertical line on the left side. A horizontal line segment extends from this vertical line at approximately one-third of the way down. Further down, another horizontal segment extends from the vertical line, followed by a short vertical segment. In the center of the slide, there is a short vertical line. In the upper right area, there is a short horizontal line.

Thank you for your attention!

 [www.forbis.eu](http://www.forbis.eu)