



SZ160.3

Name: **Pole fuse switch disconnector**

Al/Cu 2x(16-120) mm², poles 3

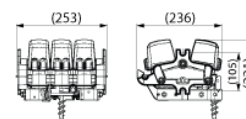
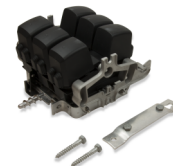
Type: SZ160.3

GTIN: 6438100318314

Description: These pole fuse switches include separate terminal covers for in-coming and out-going conductors, thus making installation safer. Connectors included 6 x KG45.5, poles 3.

Package: 1/48

Unit: PCS



Technical specification

Electrical values

Fuse	160 A
Nominal insulation voltage	1000 V
Nominal voltage (Un)	415 V
Rated values	160 A, 415 V

Short-circuit characteristics

Rated conditional short-circuit current 50 kA

Ratings

Degree of protection	IP23
ETIM class	EC001040

Dimensions

Weight	3.7 kg
Conductor size Al	16 ... 120 mm ²
Conductor size Cu	16 ... 120 mm ²

Features

Connectors included	6 x KG45.5
Fuse contact	NH00
Number of poles	3
Utilization category	AC22B

Certificates

Standards IEC 60947-3

ETIM

Max. rated operation voltage Ue AC	415 V
Rated permanent current Iu	160 A
Conditioned rated short-circuit current Iq	50 kA
Suitable for fuses	NH00
Number of poles	3



SZ160.3

Type of electrical connection of main circuit **Cable clamp**

Type of control element **Long turning handle**

Use: For protecting stranded overhead cables and underground cables in LV-networks. Fuse-switch can be operated from the ground level by using operating rods.

Construction:	Component	Material
	Insulation parts	UV-radiation resistant fibreglass reinforced plastic
	Body	Corrosion resistant aluminium alloy
	Covers	Weather and UV-radiation resistant plastic
	Steel parts	Hot-dip galvanised or stainless steel
	The delivery includes:	
	Quenching chambers	3 pcs
	Al/Cu-connectors for 2x(16-120)mm ² , KG 45	6 pcs
	Deck screws PLE 13 (10x70mm)	2 pcs
	Fixing bracket PSS 288 with two screws M10 x 16	Distance between holes (mid to mid) 185 mm / hole Ø11mm

Installation: The switch is attached to the pole with deck screws. This can be done from either end to make the chaining of units easier. Attachment to concrete and metal poles is done by band or screw fixing or by using brackets or racks.

Tools required: Wrench and hammer, tightening tool CT 42 when steel band is used.

Markings: Ensto SZ160.3 160A 415V 50Hz AC22B gL-gG 00 160A
12W IP23 L1IN L2IN L3IN
IEC 60947-3

Standard: IEC 60947-3