



**THE NETHERLANDS
(N E D E R L A N D)**



COMMUNICATION

Concerning ⁽¹⁾ :

- ~~- approval granted~~
- approval extended
- ~~- approval refused~~
- ~~- approval withdrawn~~
- ~~- production definitely discontinued~~

of a type of tyre for motor vehicles pursuant to Regulation number 30.

Approval number: E4-30R-0249752

Extension number: 02

- | | |
|--|--|
| 1. Manufacturer's name and address | : Continental Reifen Deutschland GmbH
Vahrenwalder Str. 9
30165 Hannover
Germany |
| 2. Tyre type designation ⁽²⁾ | |
| 2.1 Brand-name(s)/trademark(s) | : GENERAL, BARUM, UNIROYAL, SEMPERIT,
GISLAVED
<u>BESTDRIVE, VIKING</u> |
| 2.2 Trade description(s)/Commercial name(s) | : SEMPERIT, SPEED-LIFE
SEMPERIT, SPEED-LIFE 2
GISLAVED, ULTRA*SPEED
GENERAL, ALTIMAX SPORT
UNIROYAL, RAINSPORT 3
BARUM, Bravuris 3 HM
<u>BESTDRIVE, BestDrive SUMMER</u>
<u>GISLAVED, ULTRA*SPEED 2</u>
<u>BARUM, BRAVURIS 5HM</u>
<u>GENERAL, ALTIMAX ONE S</u>
<u>VIKING, ProTech NewGen</u> |
| 3. If applicable, name and address of the manufacturer's representative | : not applicable |
| 4. Summarized description | |
| 4.1 Tyre size designation | : 215/55 ZR 16
<u>215/55 R 16</u> |
| 4.2 Category of use | : normal / snow / special use / temporary use ⁽¹⁾ |
| 4.3 Structure | : diagonal / bias belted / radial / run flat tyre ⁽¹⁾ |
| 4.4 Speed category symbol | : Y |
| 4.5 Load-capacity index | : 97 |
| 5. Technical Service and, where applicable, test laboratory approved for purposes of approval or of verification of conformity | : Continental Reifen Deutschland GmbH
Vahrenwalder Str. 9
30165 Hannover
Germany |



6. Date of report issued by that service : 22.08.2016, 22.08.2016
7. Number of report issued by that service : 4864690, 4864691
8. Reason(s) of extension (if applicable) : Tyre Type Designation added
9. Any remarks : Reinforced/Extra Load
10. Place : Zoetermeer
11. Date : 29-MAR-2018
12. Signature :

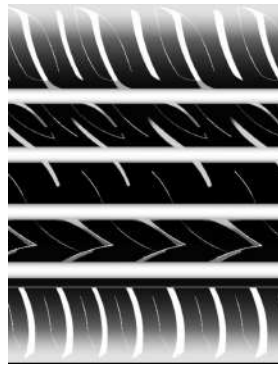


13. The list of documents in the approval file which are deposited at the administrative service having delivered the approval and which can be obtained upon request.
- Application form relating to ECE approval for a pneumatic tyre pursuant to Regulation number 30.

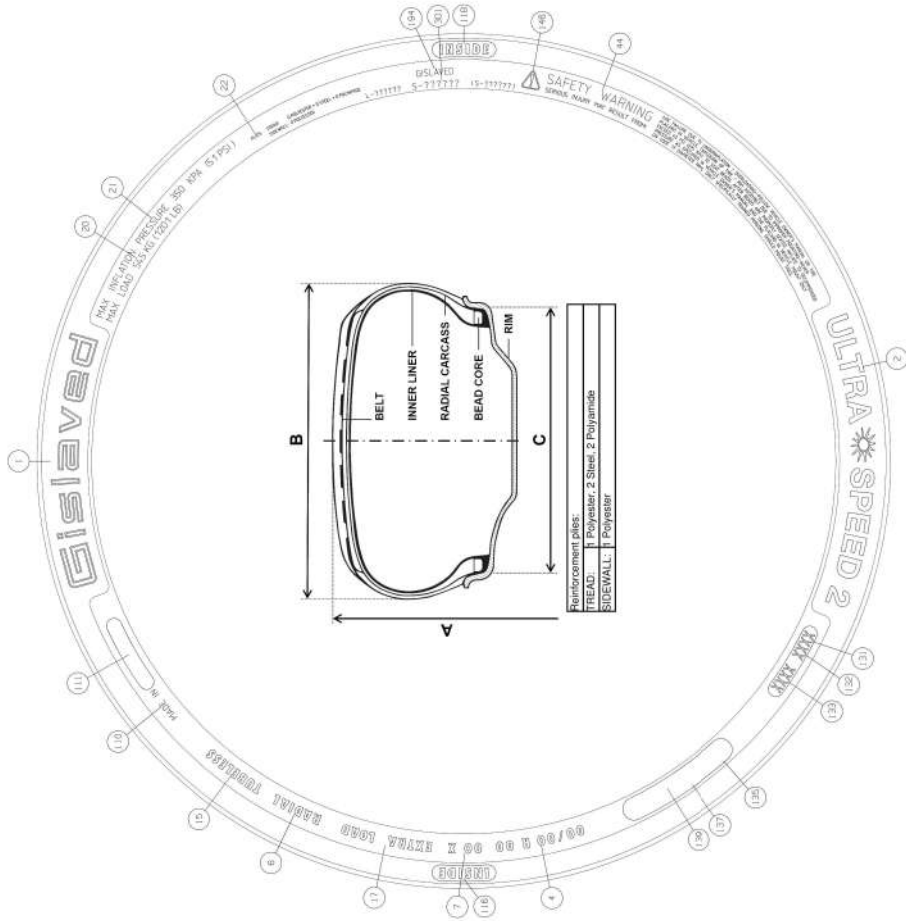
-
- The drawing of the tyre's sidewalls, tread and dimensioned cross-section.
 - The test report as mentioned in item 7.

⁽¹⁾ Strike out what does not apply.

⁽²⁾ A list of Brand name(s)/trademark(s) or Trade description(s)/ Commercial name(s) may be annexed to this communication



The drawing may contain more position numbers than required by UNECE type approval.



Reinforcement plies:
 TREAD: 1 Polyester, 2 Steel, 2 Polyamide
 SIDEWALL: 1 Polyester

Position	Description	min height	Tire Side	TSL Content	Position	Description	min height	Tire Side	TSL Content
1/194	Brand Name (Trade mark)		both	GISLAVED	116	"Inside"/"Outside" marking		SS	OUTSIDE
2 or 3	Trade description (Commercial name)		both	ULTRA*SPEED 2	117	"Inside"/"Outside" marking		OSS	INSIDE
4	Tire size designation	>6 (or 9)	both	215/55 R 16	134	Date of manufacturing	>4 mm	SS	[WWYY]
6	Structure	>4 mm	both	RADIAL	179	Alpine Symbol		both	
7 or 8	Service description (LI/SSY)	>6 mm	both	97 Y	184	Runflat Symbol		both	
9 or 10	Additional service description	>6 mm	both		191	"FRT" marking	>4 mm	both	E4
13 or 14	"M+S" (or "M.S" or "M&S")		both		135	UN approval mark	>12 mm	both	
15	Tube type / Tubeless		both	TUBELESS	137	UN R30/R54/R75 approval no.		both	0249752
17	Extra Load or Reinforced	>6 mm	both	EXTRA LOAD					
19	PSI index	>2 mm	both						
27	Regroovability		both						
32	"TEMPORARY USE ONLY"	>12.7 mm	both						
34	"INFLATE TO 420 kPa (60 PSI)"	>12.7 mm	both						
73	Test inflation Pressure in KPA	>2 mm	both						
78	Mark for special use tires	>4 mm	both						
79	"TRACTION"	>4mm	both						

Design Dimensions (calculated / Annex-5)

Overall diameter	A (mm)	642
Section Width	B (mm)	226
Measuring rim	C (Rim Code)	7.0Jx16

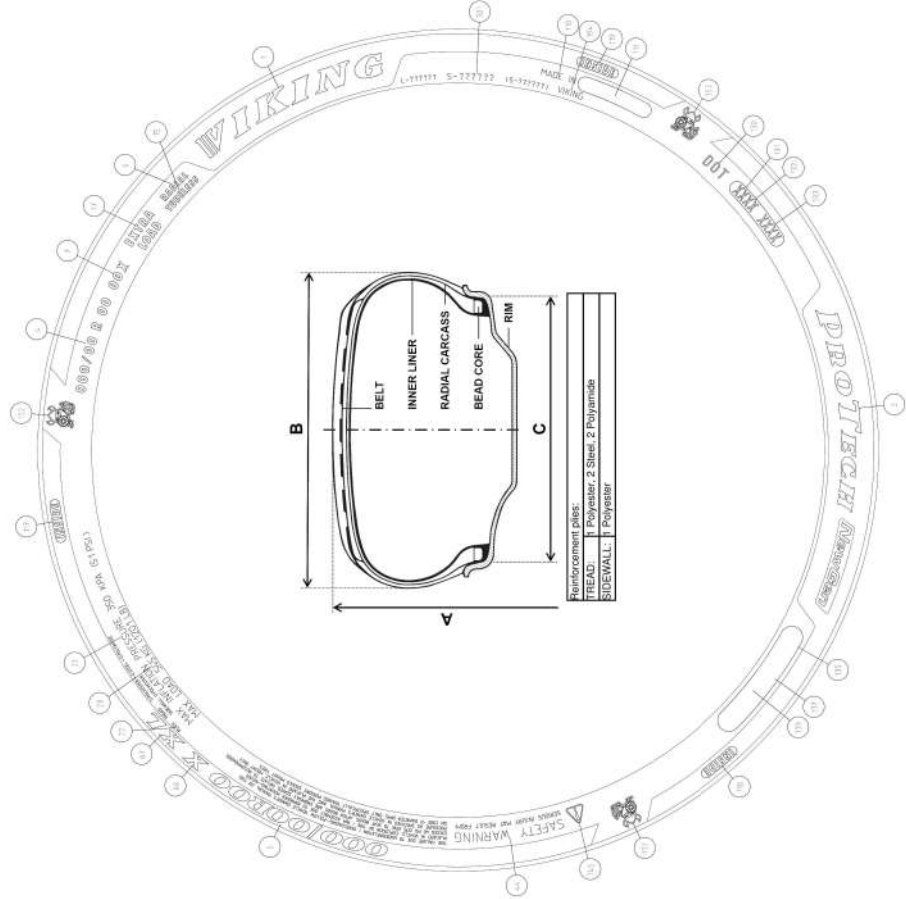
Approval No.	E4-30R-0249752
Extension:	02
Name:	D. Schoenfelder
Drawing No.:	1
Date:	3/22/18 11:26 AM
Pattern	4246.01



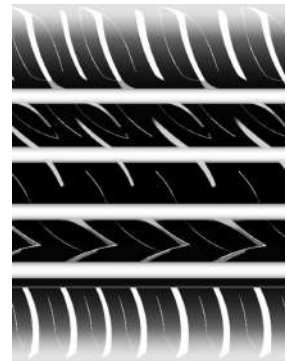
Company proprietary
 Unauthorized duplication prohibited

Serial Side (SS)

Off Serial Side (OSS)



The drawing may contain more position numbers than required by UNECE type approval.



Position	Description	min height	Tire Side	TSL Content	Position	Description	min height	Tire Side	TSL Content
1/194	Brand Name (Trade mark)		both	WIKING	116	"Inside"/"Outside" marking		SS	OUTSIDE
2 or 3	Trade description (Commercial name)		both	ProTech NewGen	117	"Inside"/"Outside" marking		OSS	INSIDE
4	Tire size designation	>6 (or 9)	both	215/55 R 16	134	Date of manufacturing	>4 mm	SS	[WWYY]
6	Structure	>4 mm	both	RADIAL	179	Alpine Symbol		both	
7 or 8	Service description (LI / SSY)	>6 mm	both	97 Y	184	Runflat Symbol		both	
9 or 10	Additional service description	>6 mm	both		191	"FRT" marking	>4 mm	both	E4
13 or 14	"M+S" (or "M.S" or "M&S")		both		135	UN approval mark	>12 mm	both	
15	Tube type / Tubeless		both	TUBELESS	137	UN R30/R54/R75 approval no.		both	0249752
17	Extra Load or Reinforced	>6 mm	both	EXTRA LOAD					
19	PSI index	>2 mm	both						
27	Regroovability		both						
32	"TEMPORARY USE ONLY"	> 12.7 mm	both						
34	"INFLATE TO 420 kPa (60 PSI)"	> 12.7 mm	both						
73	Test inflation Pressure in KPA	>2 mm	both						
78	Mark for special use tires	>4 mm	both						
79	"TRACTION"	>4mm	both						

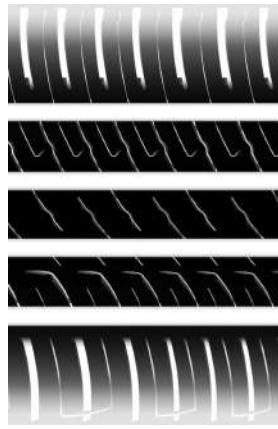
Design Dimensions (calculated / Annex-5)

Overall diameter	A (mm)	642
Section Width	B (mm)	226
Measuring rim	C (Rim Code)	7.0Jx16

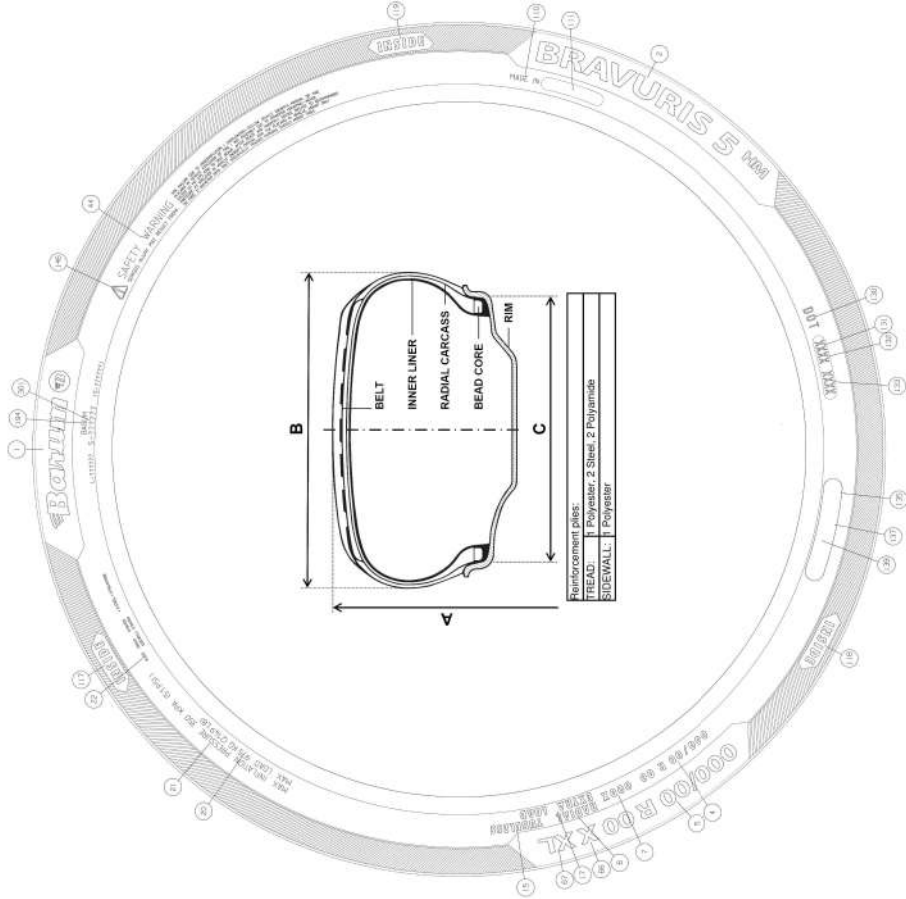
Approval No.	E4-30R-0249752
Extension:	02
Name:	D. Schoenfelder
Drawing No.:	2
Date:	3/22/18 11:26 AM
Pattern	4246.01



Company proprietary
Unauthorized duplication prohibited



The drawing may contain more position numbers than required by UNECE type approval.



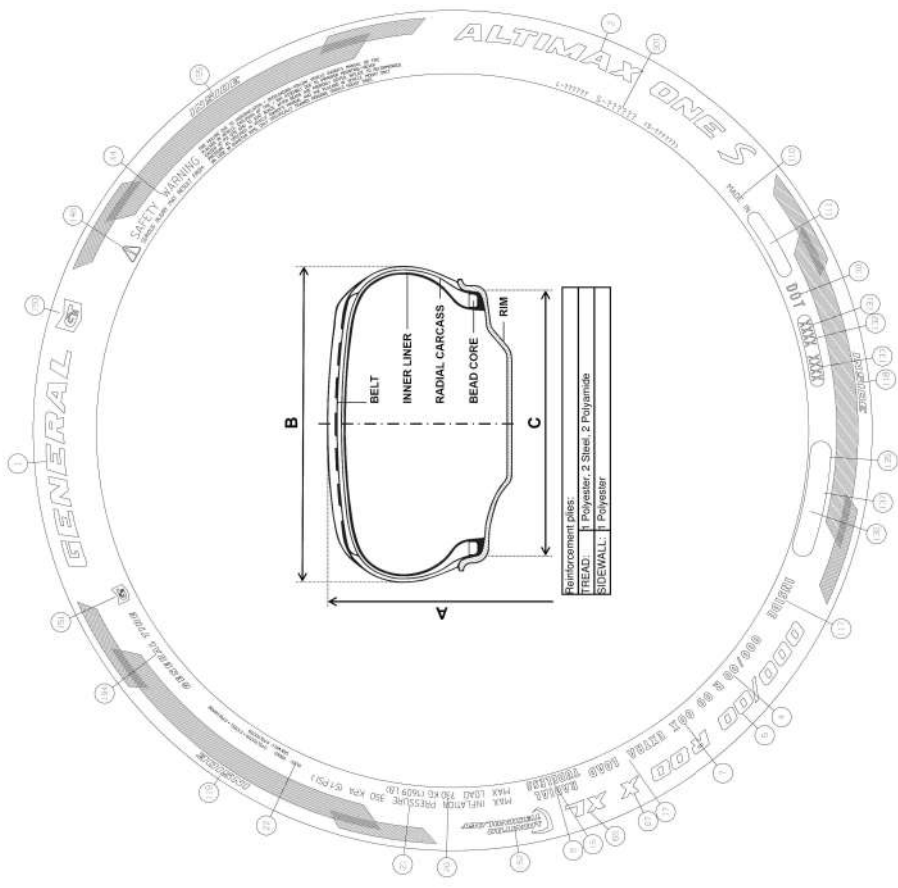
Position	Description	min height	Tire Side	TSL Content	Position	Description	min height	Tire Side	TSL Content
1/194	Brand Name (Trade mark)		both	BARUM	116	"Inside"/"Outside" marking		SS	OUTSIDE
2 or 3	Trade description (Commercial name)		both	BRAVURIS 5HM	117	"Inside"/"Outside" marking		OSS	INSIDE
4	Tire size designation	>6 (or 9)	both	215/55 R 16	134	Date of manufacturing	>4 mm	SS	[WWYY]
6	Structure	>4 mm	both	RADIAL	179	Alpine Symbol		both	
7 or 8	Service description (LI / SSY)	>6 mm	both	97 Y	184	Runflat Symbol		both	
9 or 10	Additional service description	>6 mm	both		191	"FRT" marking	>4 mm	both	E4
13 or 14	"M+S" (or "M.S" or "M&S")		both		135	UN approval mark	>12 mm	both	
15	Tube type / Tubeless		both	TUBELESS	137	UN R30/R54/R75 approval no.		both	0249752
17	Extra Load or Reinforced	>6 mm	both	EXTRA LOAD		Tread depth			
19	PSI index	>2 mm	both			Surface void/ fill ratio			
27	Regroovability		both			Number of circumferential ribs			
32	"TEMPORARY USE ONLY"	> 12.7 mm	both			Number of block-like elements			
34	"INFLATE TO 420 kPa (60 PSI)"	> 12.7 mm	both			Depth of lateral grooves/sipes >=50% of main groove depth?			
73	Test inflation Pressure in KPA	>2 mm	both						
78	Mark for special use tires	>4 mm	both						
79	"TRACTION"	>4mm	both						

Design Dimensions (calculated / Annex-5)			
Overall diameter	A (mm)	642	
Section Width	B (mm)	226	
Measuring rim	C (Rim Code)	7.0Jx16	
Approval No.	E4-30R-0249752		
Extension:	02		
Name:	D. Schoenfelder		
Drawing No.:	3		
Date:	3/22/18 11:26 AM		
Pattern	4737.01		



Off Serial Side (OSS)

Serial Side (SS)



The drawing may contain more position numbers than required by UNECE type approval.

Position	Description	min height	Tire Side	TSL Content	Description	min height	Tire Side	TSL Content	Position	Description	min height	Tire Side	TSL Content
1/194	Brand Name (Trade mark)		both	GENERAL	"Inside"/"Outside" marking		SS	OUTSIDE	116	"Inside"/"Outside" marking		SS	OUTSIDE
2 or 3	Trade description (Commercial name)		both	ALTIMAX ONE S	"Inside"/"Outside" marking		OSS	INSIDE	117	"Inside"/"Outside" marking		OSS	INSIDE
4	Tire size designation	>6 (or 9)	both	215/55 R 16	Date of manufacturing	>4 mm	SS	[WWYY]	134	Date of manufacturing		SS	[WWYY]
6	Structure	>4 mm	both	RADIAL	Alpine Symbol		both		179	Alpine Symbol		both	
7 or 8	Service description (LI/SSY)	>6 mm	both	97 Y	Runflat Symbol		both		184	Runflat Symbol		both	
9 or 10	Additional service description	>6 mm	both		"FRT" marking	>4 mm	both	E4	191	"FRT" marking		both	
13 or 14	"M+S" (or "M.S" or "M&S")		both		UN approval mark	>12 mm	both		135	UN approval mark		both	
15	Tube type / Tubeless		both	TUBELESS	UN R30/R54/R75 approval no.		both	0249752	137	UN R30/R54/R75 approval no.		both	
17	Extra Load or Reinforced	>6 mm	both	EXTRA LOAD	Tread depth					Tread depth			
19	PSI index	>2 mm	both		Surface void/ fill ratio					Surface void/ fill ratio			
27	Regroovability		both		Number of circumferential ribs					Number of circumferential ribs			
32	"TEMPORARY USE ONLY"	> 12.7 mm	both		Number of block-like elements					Number of block-like elements			
34	"INFLATE TO 420 kPa (60 PSI)"	> 12.7 mm	both		Depth of lateral grooves/sipes >=50% of main groove depth?					Depth of lateral grooves/sipes >=50% of main groove depth?			
73	Test inflation Pressure in KPA	>2 mm	both										
78	Mark for special use tires	>4 mm	both										
79	"TRACTION"	>4mm	both										

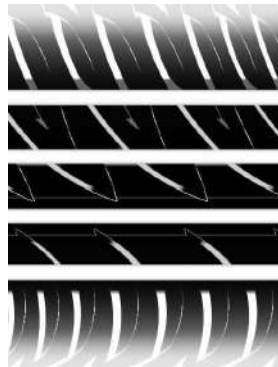
Design Dimensions (calculated / Annex-5)

Overall diameter	A (mm)	642
Section Width	B (mm)	226
Measuring rim	C (Rim Code)	7.0Jx16

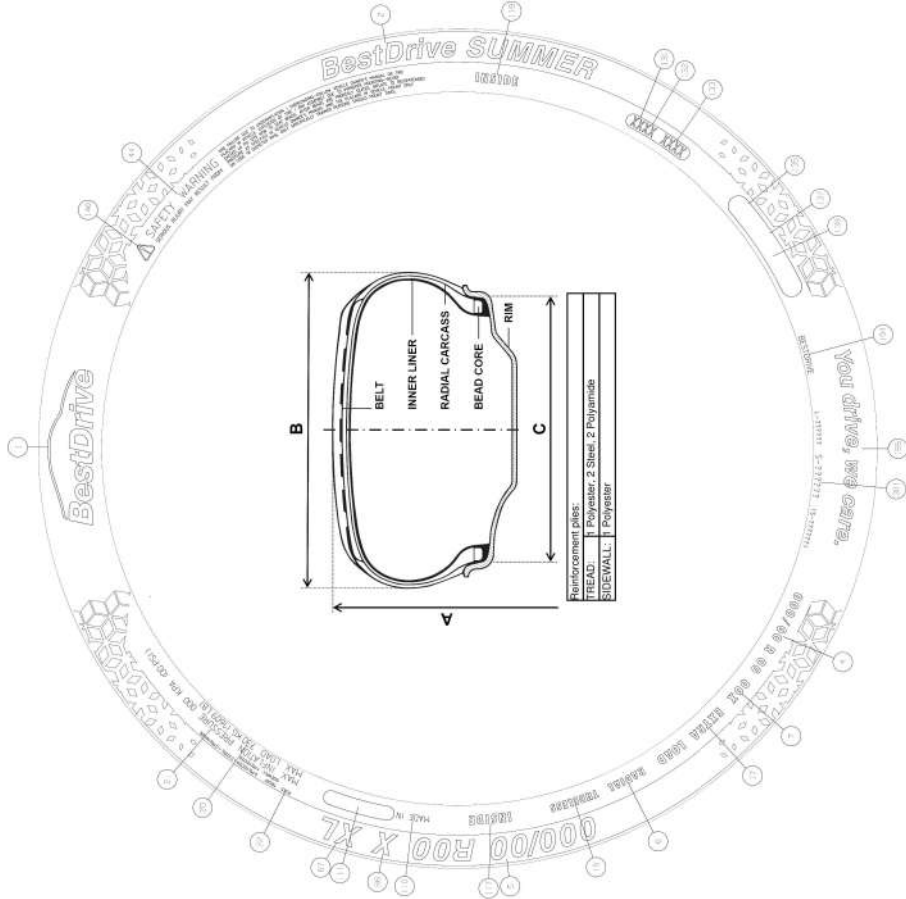
Approval No.	E4-30R-0249752
Extension:	02
Name:	D. Schoenfelder
Drawing No.:	4
Date:	3/22/18 11:26 AM
Pattern	H240.01



Company proprietary
Unauthorized duplication prohibited



The drawing may contain more position numbers than required by UNECE type approval.



Position	Description	min height	Tire Side	TSL Content	min height	Tire Side	TSL Content
1/194	Brand Name (Trade mark)		both	BESTDRIVE		SS	OUTSIDE
2 or 3	Trade description (Commercial name)		both	BestDrive SUMMER		OSS	INSIDE
4	Tire size designation	>6 (or 9)	both	215/55 R 16	>4 mm	SS	[WWYY]
6	Structure	>4 mm	both	RADIAL		both	
7 or 8	Service description (LI / SSY)	>6 mm	both	97 Y		both	
9 or 10	Additional service description	>6 mm	both			both	
13 or 14	"M+S" (or "M.S" or "M&S")		both			both	
15	Tube type / Tubeless		both	TUBELESS		both	
17	Extra Load or Reinforced	>6 mm	both	EXTRA LOAD		both	
19	PSI index	>2 mm	both			both	
27	Regroovability		both			both	
32	"TEMPORARY USE ONLY"	> 12.7 mm	both			both	
34	"INFLATE TO 420 kPa (60 PSI)"	> 12.7 mm	both			both	
73	Test inflation Pressure in KPA	>2 mm	both			both	
78	Mark for special use tires	>4 mm	both			both	
79	"TRACTION"	>4mm	both			both	

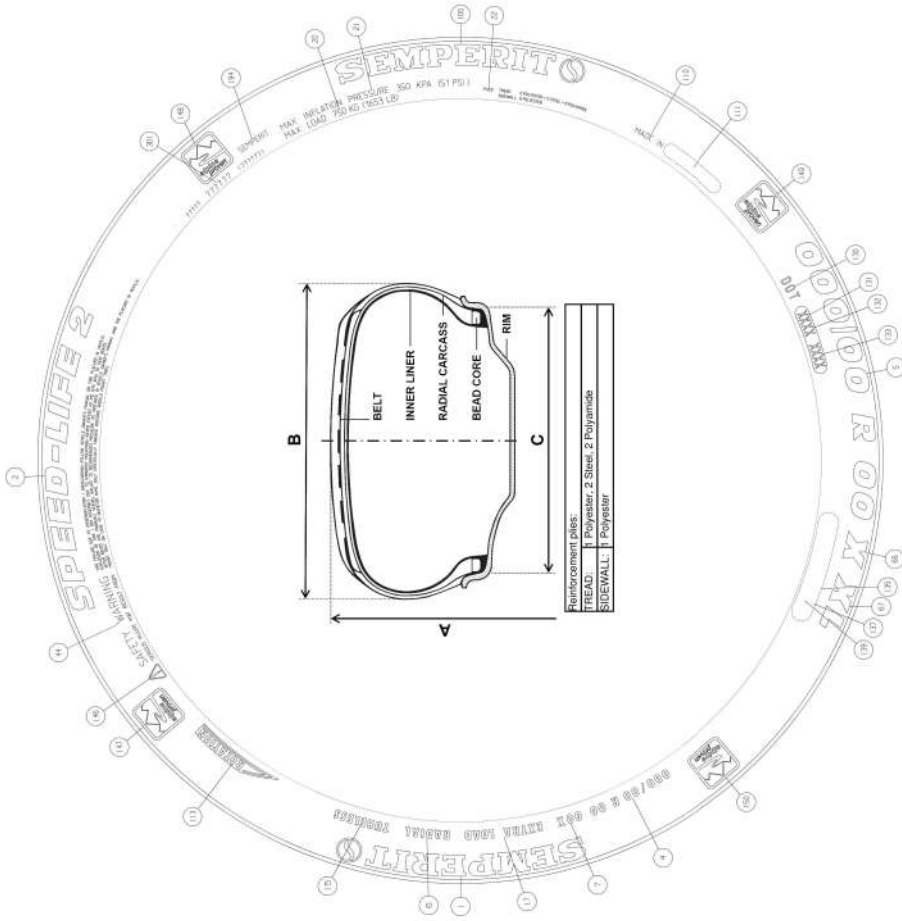
Design Dimensions (calculated / Annex-5)		
Overall diameter	A (mm)	642
Section Width	B (mm)	226
Measuring rim	C (Rim Code)	7.0Jx16

Approval No.	E4-30R-0249752
Extension:	02
Name:	D. Schoenfelder
Drawing No.:	5
Date:	3/21/18 5:24 PM
Pattern	4735.01



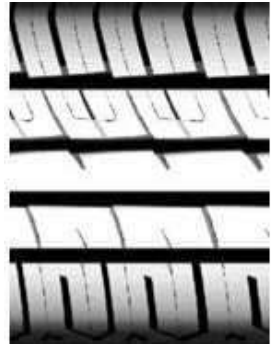
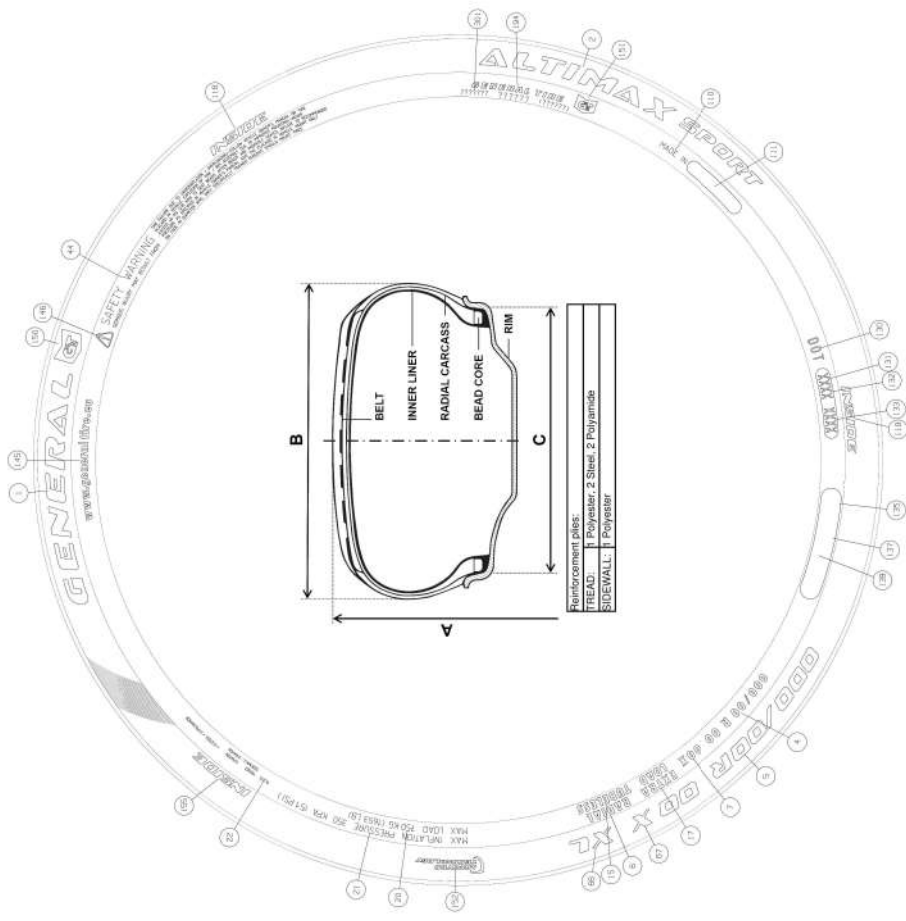


The drawing may contain more position numbers than required by UNECE type approval.



Position	Description	min height	Tire Side	TSL Content	min height	Description	Tire Side	TSL Content	Design Dimensions (calculated / Annex-5)
1/194	Brand Name (Trade mark)		both	SEMPERIT		"Inside"/"Outside" marking	SS	OUTSIDE	Overall diameter A (mm) 642
2 or 3	Trade description (Commercial name)		both	SPEED-LIFE 2		"Inside"/"Outside" marking	OSS	INSIDE	Section Width B (mm) 226
4	Tire size designation	>6 (or 9)	both	215/55 R 16	>4 mm	Date of manufacturing	SS	[WWYY]	Measuring rim C (Rim Code) 7.0Jx16
6	Structure	>4 mm	both	RADIAL		Alpine Symbol	both		
7 or 8	Service description (LI / SSY)	>6 mm	both	97 Y		Runflat Symbol	both		
9 or 10	Additional service description	>6 mm	both			"FRT" marking	both		
13 or 14	"M+S" (or "M.S" or "M&S")		both			UN approval mark	both	E4	Approval No. E4-30R-0249752
15	Tube type / Tubeless		both	TUBELESS		UN R30/R54/R75 approval no.	both	0249752	Extension: 01
17	Extra Load or Reinforced	>6 mm	both	EXTRA LOAD		Tread depth	both		Name: D. Schoenfelder
19	PSI index	>2 mm	both			Surface void/ fill ratio	both		Drawing No.: 5
27	Regroovability		both			Number of circumferential ribs	both		Date: 3/19/18 7:09 AM
32	"TEMPORARY USE ONLY"	>12.7 mm	both			Number of block-like elements	both		Pattern 3741.03
34	"INFLATE TO 420 kPa (60 PSI)"	>12.7 mm	both			Depth of lateral grooves/sipes >=50% of main groove depth?	both		
73	Test inflation Pressure in KPA	>2 mm	both						
78	Mark for special use tires	>4 mm	both						
79	"TRACTION"	>4mm	both						



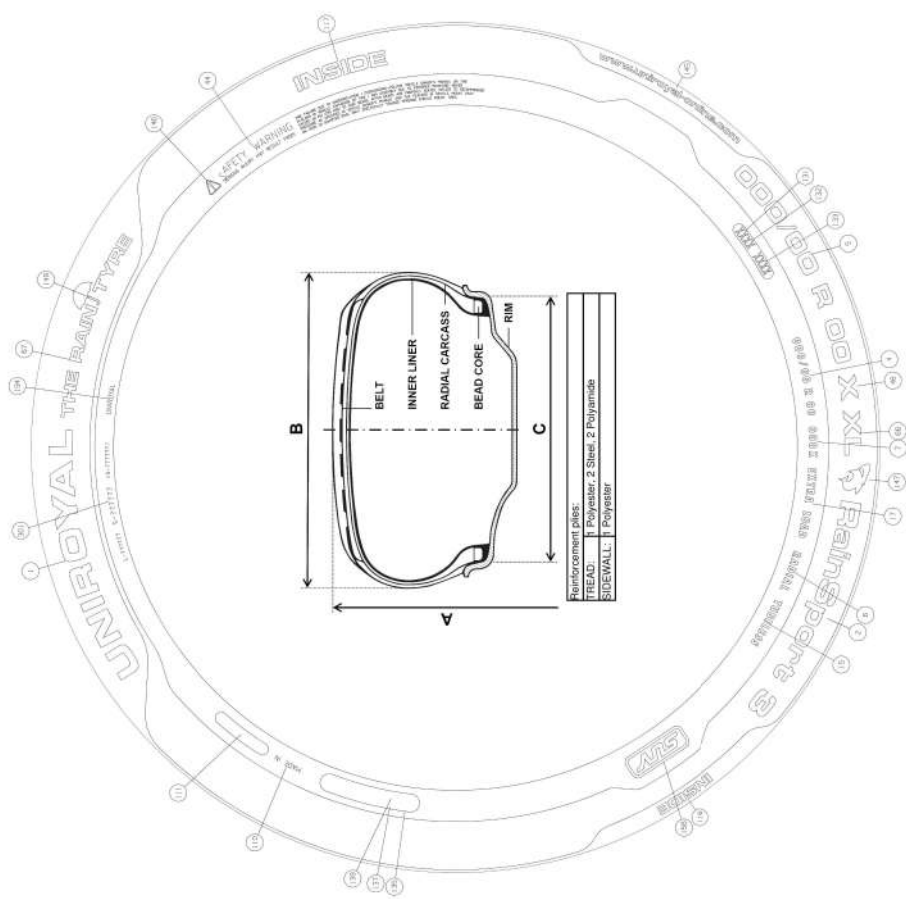


The drawing may contain more position numbers than required by UNECE type approval.

Position	Description	min height	Tire Side	TSL Content	Position	Description	min height	Tire Side	TSL Content
1/194	Brand Name (Trade mark)		both	GENERAL	116	"Inside"/"Outside" marking		SS	OUTSIDE
2 or 3	Trade description (Commercial name)		both	ALTIMAX SPORT	117	"Inside"/"Outside" marking		OSS	INSIDE
4	Tire size designation	>6 (or 9)	both	215/55 R 16	134	Date of manufacturing	>4 mm	SS	[WWYY]
6	Structure	>4 mm	both	RADIAL	179	Alpine Symbol		both	
7 or 8	Service description (LI / SSY)	>6 mm	both	97 Y	184	Runflat Symbol		both	
9 or 10	Additional service description	>6 mm	both		191	"FRT" marking	>4 mm	both	
13 or 14	"M+S" (or "M.S" or "M&S")		both		135	UN approval mark	>12 mm	both	E4
15	Tube type / Tubeless		both	TUBELESS	137	UN R30/R54/R75 approval no.		both	0249752
17	Extra Load or Reinforced	>6 mm	both	EXTRA LOAD		Tread depth			
19	PSI index	>2 mm	both			Surface void/ fill ratio			
27	Regroovability		both			Number of circumferential ribs			
32	"TEMPORARY USE ONLY"	> 12.7 mm	both			Number of block-like elements			
34	"INFLATE TO 420 kPa (60 PSI)"	> 12.7 mm	both			Depth of lateral grooves/sipes >=50% of main groove depth?			
73	Test inflation Pressure in KPA	>2 mm	both						
78	Mark for special use tires	>4 mm	both						
79	"TRACTION"	>4mm	both						

Design Dimensions (calculated / Annex-5)		
Overall diameter	A (mm)	642
Section Width	B (mm)	226
Measuring rim	C (Rim Code)	7.0Jx16
Approval No.	E4-30R-0249752	
Extension:	01	
Name:	T. Ahnemann	
Drawing No.:	2	
Date:	3/19/18 7:09 AM	
Pattern	3703.01	





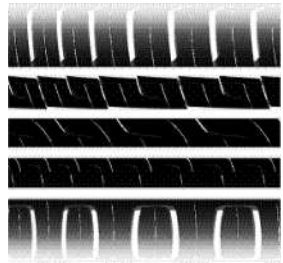
The drawing may contain more position numbers than required by UNECE type approval.

Position	Description	min height	Tire Side	TSL Content	Position	Description	min height	Tire Side	TSL Content
1/194	Brand Name (Trade mark)		both	UNIROYAL	116	"Inside"/"Outside" marking		SS	OUTSIDE
2 or 3	Trade description (Commercial name)		both	RAINSPOORT 3	117	"Inside"/"Outside" marking		OSS	INSIDE
4	Tire size designation	>6 (or 9)	both	215/55 R 16	134	Date of manufacturing	>4 mm	SS	[WWYY]
6	Structure	>4 mm	both	RADIAL	179	Alpine Symbol		both	
7 or 8	Service description (LI / SSY)	>6 mm	both	97 Y	184	Runflat Symbol		both	
9 or 10	Additional service description	>6 mm	both		191	"FRT" marking	>4 mm	both	
13 or 14	"M+S" (or "M.S" or "M&S")		both		135	UN approval mark	>12 mm	both	E4
15	Tube type / Tubeless		both	TUBELESS	137	UN R30/R54/R75 approval no.		both	0249752
17	Extra Load or Reinforced	>6 mm	both	EXTRA LOAD					
19	PSI index	>2 mm	both						
27	Regroovability		both						
32	"TEMPORARY USE ONLY"	> 12.7 mm	both						
34	"INFLATE TO 420 kPa (60 PSI)"	> 12.7 mm	both						
73	Test inflation Pressure in KPA	>2 mm	both						
78	Mark for special use tires	>4 mm	both						
79	"TRACTION"	>4mm	both						

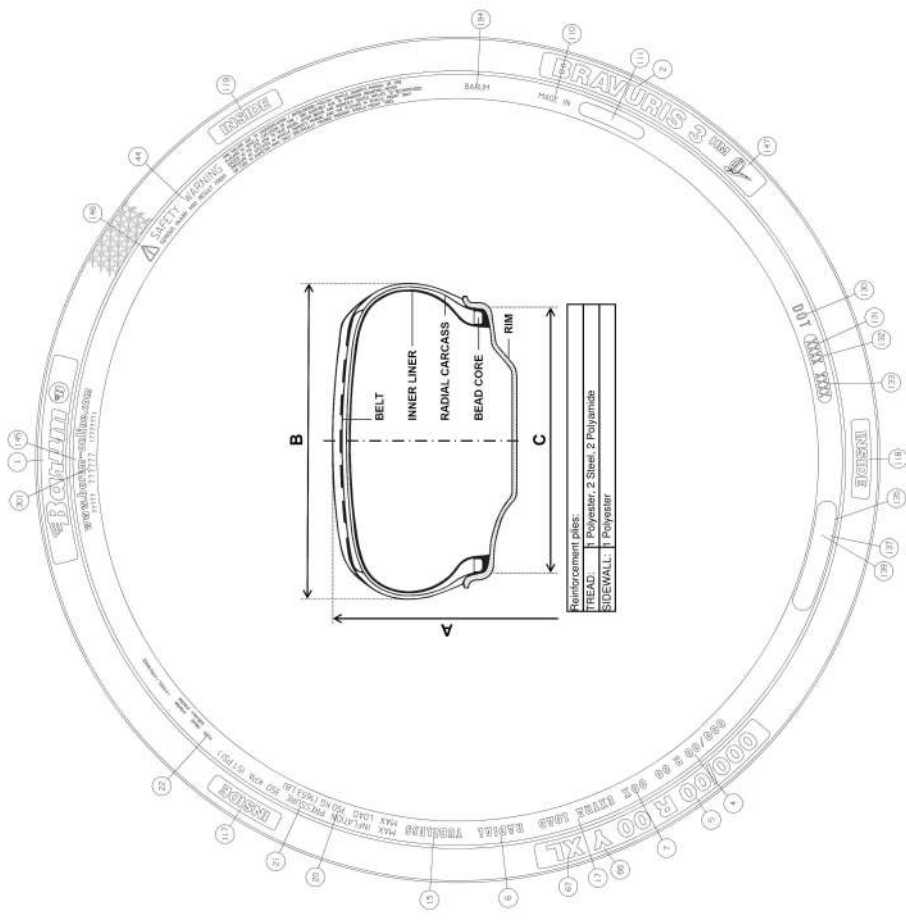
Design Dimensions (calculated / Annex-5)		
Overall diameter	A (mm)	642
Section Width	B (mm)	226
Measuring rim	C (Rim Code)	7.0Jx16

Approval No.	E4-30R-0249752
Extension:	01
Name:	T. Ahnemann
Drawing No.:	3
Date:	3/19/18 7:09 AM
Pattern	3767.01





The drawing may contain more position numbers than required by UNECE type approval.



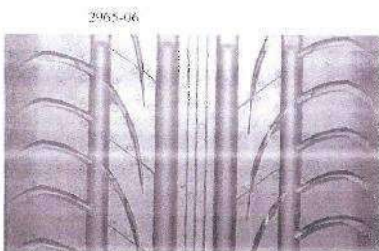
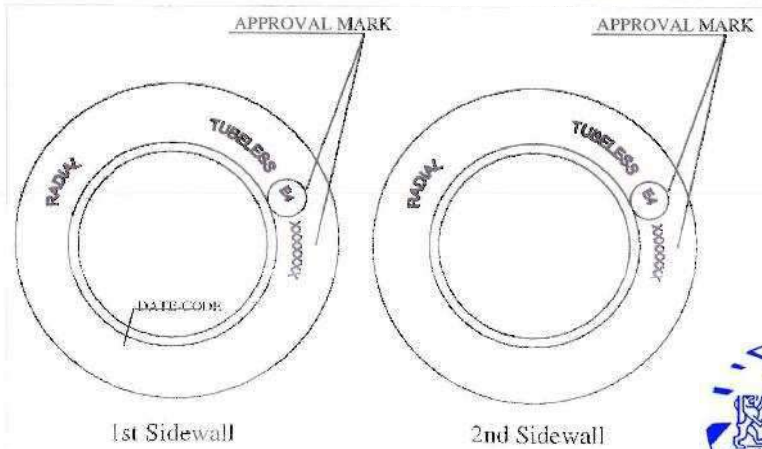
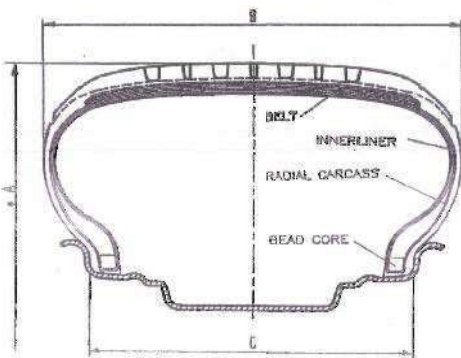
Reinforcement plies:
 TREAD: I Polyester, 2 Steel, 2 Polyamide
 SIDEWALL: I Polyester

Position	Description	min height	Tire Side	TSL Content	Position	Description	min height	Tire Side	TSL Content
1/194	Brand Name (Trade mark)		both	BARUM	116	"Inside"/"Outside" marking		SS	OUTSIDE
2 or 3	Trade description (Commercial name)		both	Bravuris 3 HM	117	"Inside"/"Outside" marking		OSS	INSIDE
4	Tire size designation	>6 (or 9)	both	215/55 R 16	134	Date of manufacturing	>4 mm	SS	[WWYY]
6	Structure	>4 mm	both	RADIAL	179	Alpine Symbol		both	
7 or 8	Service description (LI / SSY)	>6 mm	both	97 Y	184	Runflat Symbol		both	
9 or 10	Additional service description	>6 mm	both		191	"FRT" marking	>4 mm	both	E4
13 or 14	"M+S" (or "M.S" or "M&S")		both		135	UN approval mark	>12 mm	both	
15	Tube type / Tubeless		both	TUBELESS	137	UN R30/R54/R75 approval no.		both	0249752
17	Extra Load or Reinforced	>6 mm	both	EXTRA LOAD		Tread depth			
19	PSI index	>2 mm	both			Surface void/ fill ratio			
27	Regroovability		both			Number of circumferential ribs			
32	"TEMPORARY USE ONLY"	> 12.7 mm	both			Number of block-like elements			
34	"INFLATE TO 420 kPa (60 PSI)"	> 12.7 mm	both			Depth of lateral grooves/sipes >=50% of main groove depth?			
73	Test inflation Pressure in KPA	>2 mm	both						
78	Mark for special use tires	>4 mm	both						
79	"TRACTION"	>4mm	both						

Design Dimensions (calculated / Annex-5)

Overall diameter	A (mm)	642
Section Width	B (mm)	226
Measuring rim	C (Rim Code)	7.0Jx16
Approval No.	E4-30R-0249752	
Extension:	01	
Name:	T. Ahnemann	
Drawing No.:	4	
Date:	3/19/18 7:09 AM	
Pattern	3650.03	

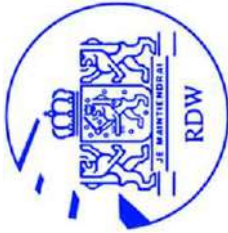
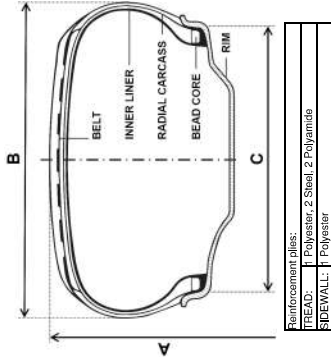




6		5					
Y	215/55 ZR 16 Reinforced/ Extra Load	97	TT TL	642	226	7Jx16	
SS	4 Category of use	LI	Tyre type	A mm	B mm	C Rim-Code	Remarks
Brand name	1 Semperit	Drawing No. /Remarks:		Checked / Date :			
Tyre type designation	2 Speed-Life	P - 0249752		22.10.2009		Fischer	



The drawing may contain more position numbers than required by UNECE type approval.



Position	Description	min height	Tire Side	TSL Content	Position	Description	min height	Tire Side	TSL Content
1/194	Brand Name (Trade mark)		both	GISLAVED	116	"Inside"/"Outside" marking		SS	OUTSIDE
2 or 3	Trade description (Commercial name)		both	GISLAVED ULTRA SPEED	117	"Inside"/"Outside" marking		OSS	INSIDE
4	Tire size designation	>6 (or 9)	both	215/55 R 16	134	Date of manufacturing	>4 mm	SS	[WWYY]
6	Structure	>4 mm	both	RADIAL	179	Alpine Symbol		both	
7 or 8	Service description (LI / SSY)	>6 mm	both	97Y	184	Runtflat Symbol		both	
9 or 10	Additional service description	>6 mm	both		191	"FRT" marking	>4 mm	both	
13 or 14	"M+S" (or "M.S" or "M&S")	>6 mm	both		135	UN approval mark	>12 mm	both	E4
15	Tube type / Tubeless		both	TUBELESS	137	UN R30/R54/R75 approval no.		both	0249752
17	Extra Load or Reinforced	>6 mm	both	EXTRA LOAD		Tread depth			
19	PSI index	>2 mm	both			Surface void/ fill ratio			
27	Regroovability		both			Number of circumferential ribs			
32	"TEMPORARY USE ONLY"	>12.7 mm	both			Number of block-like elements			
34	"INFLATE TO 420 kPa (60 PSI)"	>12.7 mm	both			Depth of lateral grooves/sipes >=50% of main groove depth?			
78	Mark for special use tires	>4 mm	both						
79	"TRACTION"	>4mm	both						

Design Dimensions (calculated / Annex-5)	
Overall diameter	A (mm) 642
Section Width	B (mm) 226
Measuring rim	C (Rim Code) 7.0Jx16
Approval No.	E4-30R-0249752
Extension:	01
Name:	D. Schoenfelder
Drawing No.:	1
Date:	6/15/17 4:44 PM
Pattern	3568.01

