

## Rescue Battery Tools GYCDD-D

### Description:

The standard accessory of battery hydraulic rescue combi tool GYCDD-D is two pieces of original batteries and one piece of charger. Underwater use - Underwater 110m



### Features:

- 1 The main components are made of high-strength lightweight alloy, with high lifting force , light weight;
- 2, Adopt bidirectional hydraulic lock,with self - locking function, no retracting, high safety;
- 3, The equipment body adopts lightweight high strength aluminum alloy material with ceramic coating on surface, artistic and suitable for underwater operation;

### Specifications:

Model No.	GYCDD-D
Max working pressure	720 bar
Max.Lifting force plunger 1:	135 kN
Max.Lifting force plunger 2:	65 kN
Number of plunger:	2
Dimensions (L x W x H):	570*135*400
Lifting stroke piston 1:	415 mm
Lifting stroke piston 2:	378 mm
Retracted length:	565 mm
Extended length:	1358 mm
Weight without battery	19.3kg

### Optional Accessories:

- A) Set pulling chain x 1 Pc;
- B) Ram Supprt # RS 22



### Standard Accessories:

- Lithium batteries x 2 PCs
- Battery charger x 1 PC
- Strap x 1 PC
- Manual book in English x 1 PC
- Carrying case x 1 PC



## Battery Rescue spreader GYKZD-40P

### Description:

- (1) With its own power, no external power source, no tube, zero emissions, greener and healthier
- (2) High performance, low noise, high performance battery, plug and play, convenient and efficient
- (3) One-key operate, instant-on
- (4) The switch and lighting adopt split-type design, double conversion on demand
- (5) LED indicator can show the stock of the battery timely
- (6) The handle with the configuration of lamp which can provide light, it's convenient for night operation
- (7) The star-shaped design of hand valve makes the operation more convenient and accurate; Standard accessories: two pieces original batteries, one piece charger



### Features:

- (1) With its own power, no external power source, no tube, zero emissions, greener and healthier
- (2) High performance, low noise, high performance battery, plug and play, convenient and efficient
- (3) One-key operate, instant-on
- (4) The switch and lighting adopt split-type design, double conversion on demand
- (5) Underwater use – Underwater 110m
- (6) The handle with the configuration of lamp which can provide light, it's convenient for night operation
- (7) The star-shaped design of hand valve makes the operation more convenient and accurate
- (8) Multifunctional auxiliary work head with the function of spreading, tearing, clamping, pulling, etc, without the need of changing spreader head
- (9) Special anti-skid design on the spreader head, with good anti-skidding performance
- (10) Adopts Bi-directional hydraulic lock with self-lock function
- (11) The equipment body adopts lightweight high strength aluminum alloy material with ceramic coating on surface, artistic and suitable for moist environment operation
- (12) The manual reversing valve equipped with neutral automatic reset makes operation convenient and more accurate
- (13) All sealing element adopt dichtomatik with superior quality
- (14) Handle is convenient for left and right hand operation, There is protective jacket on moving parts to ensure the operator's safety
- (15) The spreader head is embedded in the spreader arm with flat structure which can wedge narrow gap to carry out rescue very fast

### Specifications:

Max working pressure	720 bar
Max spreading distance	735 mm
Min. spreading force :	82KN;
Max.pulling distance	600 mm
Pulling force	68 kN /6.9 Ton
Weight, ready for use	19.9 kg
Dimensions (L x W x H)	850x335x290mm

### Accessories:

- Lithium batteries x 2 PCs
- Battery charger x 1 PC
- Strap x 1 PC
- Manual book in English x 1 PC
- Carrying case x 1 PC



### Aolai Rescue Technology Co., Ltd

No. 958 Hongdu Road, Economic and Technical Development Zone, Dezhou, Shandong, China  
 www.aolai-rescue.com Tel: 0086-10-83631032

## Portable Hand-operated Combi Tool GYJKB-B (BJK-B1 )

### Description:

1, The rescue of all kinds of accidents, traffic accidents, earthquake ,buildings collapse etc.2, Deforming metal structure and tearing vehicle parts by cutting, spreading or clamping;3,Especially suitable for the condition of no power source, high requirement about maneuverability;



### Features:

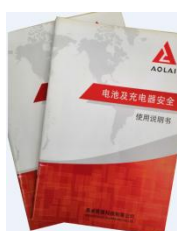
1,It's the combination of hand pump, control valve, oil tank, working head ,has the function of cutting, spreading, clamping etc. without external power source.  
2, The working head can rotate 360 °,easy to operate at any angle;  
3, The working head with unique anti-skid design, good anti-skidding performance;  
4, Adopt bidirectional hydraulic lock, with self - locking function;  
5,The equipment body adopts lightweight high strength aluminum alloy material with ceramic coating on surface, artistic and suitable for operating underwater or at inflammable and explosive environment;  
6,The manual reversing valve equipped with neutral automatic reset makes operation convenient and more accurate;  
7,All sealing element adopt dichtomatik with superior quality; 8,The cutting edge adopts collapsing & splashing prevention design ensure the operator and victim's safety;

### Specifications:

Model	GYJKB-B
Rated Working Pressure	720Mpa
Opening Distance of Blades	255mm
Max.cutting force:	410 kN
Max. Cutting Capacity(Q235steel)	10mm (Steel Plate);Φ26mm (Circle Steel)
Max .handle force( N):	300N
Max squeezing force	35kN
Weight	9.9kgs
Dimension(L*W*H)	810x 205 x 176 mm

### Accessories:

- 1) Strap x 1 PC
- 2) Manual book in English x 1 PC
- 3) Carrying case x 1 PC



## Battery Rescue Cutter JQD-A1(GYJQD-E)

### Description:

The power display is divided into 4 cells, and the full charge is full bright. Breaking tool with power display function, the power is divided into 5 grades display, above 20% display green, below 20% display red.

AC-DC dual-use function: use a special AC to DC power adapter to connect one end of the 220V AC power supply, the other end of the corresponding interface connected to the demolition tool, the tool can work normally.

Underwater use – Unterwater 110m



### Feature:

Optimum blade geometry, the battery hydraulic rescue cutter tool JQD-A1 provide the more force at the right point. LED lighting with a high light output, rescuers can start night and day, without being hindered by their own shadow.

The Aolai product has 2 symmetrical cutting heads, and it needs to be operated by one person, and the body can only have 1 handle. The tool should be balanced when lifting the tool.

Aolai products comply with EN 13204 (valid version) and have an inspection report issued by the National Fire Equipment Quality Supervision and Inspection Center. (At the time of acceptance, the supporting documents shall be attached).

### Specifications:

Battery Rescue Cutter	
Model	JQD-A1(GYJQD-E)
Working Pressure	720 bar
Opening Distance of Blade	235mm
Max. Cutting Force	790kn
Weight ( With battery)	18.68kg
Dimmension	865 x 233 x 285 mm
Cutting capacity:	<p>Φ 36mm (round steel)/(130*10)mm plate/( Φ 90*4)mm round pipe/(60*4)mm square pipe/(50*10)mm angle steel, round pipe is 45 steel material, the rest are Q235A material;</p> <p>Dimensions: 905*230*280mm</p>

## Description:

(1)Lifting in mining rescue, disaster rescue, trench rescue, fixed for large vehicles, fulfill vertical lifting and tilt lifting according to need.(2) widely used in fire, mines, roads rescue agencies etc.



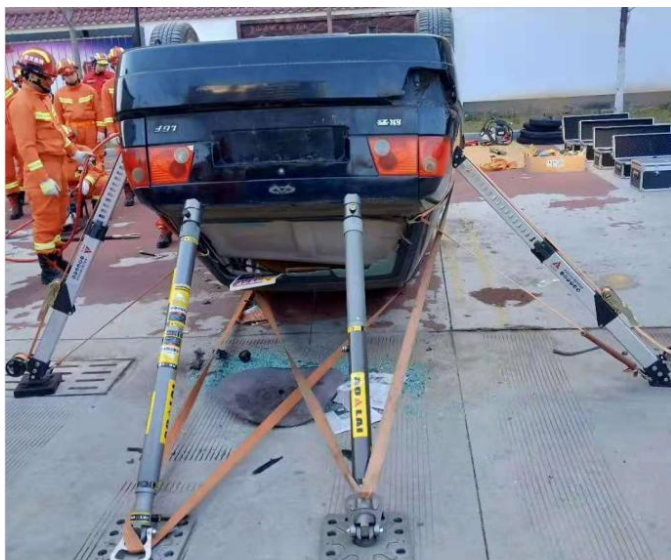
## Features:

When traffic accident occurs, how to make sure the people escape from the vehicles safety? The first thing is keeping the vehicles stable, the faster the better, because the time is urgent. Vehicle stabilization strut V-Strut is the best solution to solve the problem, V-strut is a complete set with strut, tensioning belt with hook, serrated multi-purpose head and so on, it's lightweight and easy to use, don't need to compose separated parts, choose the right position and fasten the tensioning belt, to make sure the vehicles stable enough, two sets of V-strut is better than one set of strut. Before the rescue operation, take the V-strut out and stabilize the vehicles, then rescuers can save the people safety.

## Specifications:

Max.Lifting force:	16KN/1.6T
Retracted length:	1080 mm
Adjustable Sections:	24
Each adjustable length:	30mm
Piston stroke:	720 mm
Extended length:	1800mm
Weight:	11kg
Dimensions (L x W x H):	1080 x 120 x 190 mm
Fastening Rings length:	5m

## Operation:



## Packages:

