

ACCESSORIES

APPS

PROGRAMMING

RADIOS

SCG22

MOBILE RADIO



sepura

Going further in critical communications

SCG22 SERIES

Intelligent, connected and **proven**, the SCG22 is the next generation mobile radio designed to tackle today's communication challenges and to meet the communications needs of the future

POWERFUL 10W CLASS2 RF

Extends communication into areas otherwise beyond network coverage

POWERFUL DMO GATEWAY AND REPEATER

Maintain and extend communications in terrain with poor coverage

ENHANCED APPS CAPABILITY

Deployed through Sepura AppSPACE

EXPANDED OPERATING BANDWIDTH (380-470 MHZ)

Flexibility to use across a range of users radio applications

ETHERNET CONNECTIVITY

Connection over IP protocols to connect to third party applications and services

WI-FI AND BLUETOOTH READY

Enables the use of OTAP and connection to wireless devices and networks using AppSPACE

FLEXIBLE CONFIGURATION

Dual console connectors and multiple I/O ports for maximum versatility

OPTIONAL CONSOLE ATTACHED TO FRONT

Easy integration into vehicle DIN slot with ergonomic access to the control console

BUILT IN ACCELEROMETER

Monitoring of the vehicle dynamics providing alerts to control rooms through AppSPACE

PHYSICAL SIZE AND SPACING AS PREDECESSOR

The same size and shape as the SRG3900 allows smooth integration in existing vehicle configurations

THE SCG22 COMBINES WORLD CLASS TETRA FUNCTIONALITY WITH FUTURE PROOFING TECHNOLOGIES FOR INTEGRATED MISSION CRITICAL COMMUNICATIONS

CLASS-LEADING PROVEN PERFORMANCE

The SCG22 is a fully featured TETRA mobile radio, including hardware ready to support Direct Mode Gateway, Direct Mode Repeater, PEI based Data and End to End Encryption options.

With a class-leading 10 Watts of RF power, and the most proven gateway and repeater technology on the market, the SCG22 TETRA mobile extends communication into areas otherwise beyond network coverage.

USER FRIENDLY

The SCG22 is part of the third generation SC Series family with standard interface between the SC20 and SC21 hand-held radios increasing efficiency and reducing training needs.

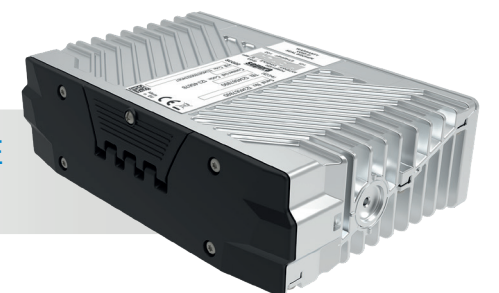
The SCG22 is compatible with the wide range of audio, power and installation accessories that are used with the SRG3900 mobile radio, resulting in smooth upgrades and seamless operations when managing mixed radio networks.

POWERING THE FUTURE

Designed for flexibility and use with multiple technologies the SCG22 comes with Bluetooth, Wi-Fi and Ethernet options to provide connection to a range of accessories and ancillary systems creating a mission critical communications hub for now and in the future.

Like all SC Series radios, the SCG22 supports the use of Sepura's AppSPACE to deliver improved operational safety, efficiency and outcomes by automating workflows and sharing situational data.

AppSPACE
Enabled



For more information visit seapura.com/SCG22



* Integration with Portalify solutions required. Portalify is a Sepura company. For more information, please contact your local representative.
** STP batteries limit the SC20 series to Class 3L RF. New Sepura SC batteries enable the SC20 series to support Class 3RF. Class 3 Support is licence-enabled.
*** Some performance limitations may apply

Hand-held console HBC3

The ergonomically designed hand set based console has outstanding audio combined with the functionality of a traditional radio with the feel of a telephone handset. Connected to the SCG22 via an interface box or through a SCC3 console the console provides rugged and flexible options for the user.



Colour console SCC3

The SCC3 is attached to the SCG22 mobile radio and is installed within a vehicle with a mounting bracket or can be front mounted when the SCG is installed in the vehicle radio DIN socket. It is typically used with a handset or with a fist microphone. Audio is supplied from a loudspeaker attached to the mobile radio or through other personal earpiece accessories. The large daylight readable screen gives easy access to radio functions.

TECHNICAL SPECIFICATIONS

SIZE AND WEIGHT

TRANSCIVER

Standard option: 938g
179mm x 50mm x 116mm

FREQUENCY BANDS

380 - 470MHz

POWER SUPPLY

12V DC rated 90W
Range 10.8 to 15.6V DC

RF PERFORMANCE

10 watt RF power output (Class 2)
RF power adjustable in steps of 5dB,
independently adjustable for TMO &
DMO operations
Adaptive power control supported

Receiver static sensitivity -115dBm
(-118dBm typical)
Receiver dynamic sensitivity -107dBm
(-109.5dBm typical)
Receiver class A & B

AUDIO

Rated audio output - 8 W @1kHz into
4 Ohms
Dual speaker configuration capable of
driving two 4 Ohm speakers (to be wired
in parallel by installer)
Fixed level line-out audio option
enabling broadcast & recording support
2x1W of additional audio drive via speaker
mics or handsets attached to up to two
SCC front-mounted accessory ports¹
Line-in audio for third-party console
interface support

Five independent volume controls for
loudspeaker & audio accessories^{2,3}
Up to three audio accessories per console

ENVIRONMENTAL

Dust & water protection to IEC60529 IP54
ETS 300 019 -2-5 drop, vibration & humidity
Operational temperature (min./max.)
-30°C to +70°C⁴
Operational temperature (conformance
tested) -20°C to +55°C
Storage temperature -40°C to +85°C⁴
IP67 SCC3 console option
IP67 HCU handlebar control unit option

1 - Factory fit option

2 - Further information available on request

3 - Accessories connected at the rear of a console use the same
volume level

4 - Operating at temperature extremes may limit some aspects of
operational performance

For full technical specifications see the SCG22, HBC3 and SCC3 Datasheets or visit www.seapura.com

Sepura UK

9000 Cambridge Research Park
Beach Drive
Waterbeach
CAMBRIDGE
CB25 9TL
Tel: +44 (0)1223 876000

sepura

www.linkedin.com/sepurapl

www.facebook.com/sepurapl

@sepurapl

www.instagram.com/sepurapl

www.youtube.com/sepurapl

sales@sepura.com



For a full list of offices and distributors or any other information, visit [sepura.com](http://www.seapura.com)

Copyright © Sepura Limited. All rights reserved.

0122_0920_V5_ENG

Sepura's policy is to continually improve its products and services. The features and facilities described in this document were correct at publication, but are subject to change without notice.