

# BMI® Medical

## Shunting System



# BMI® Medical

## Ventricular Catheter 06118, 06118S

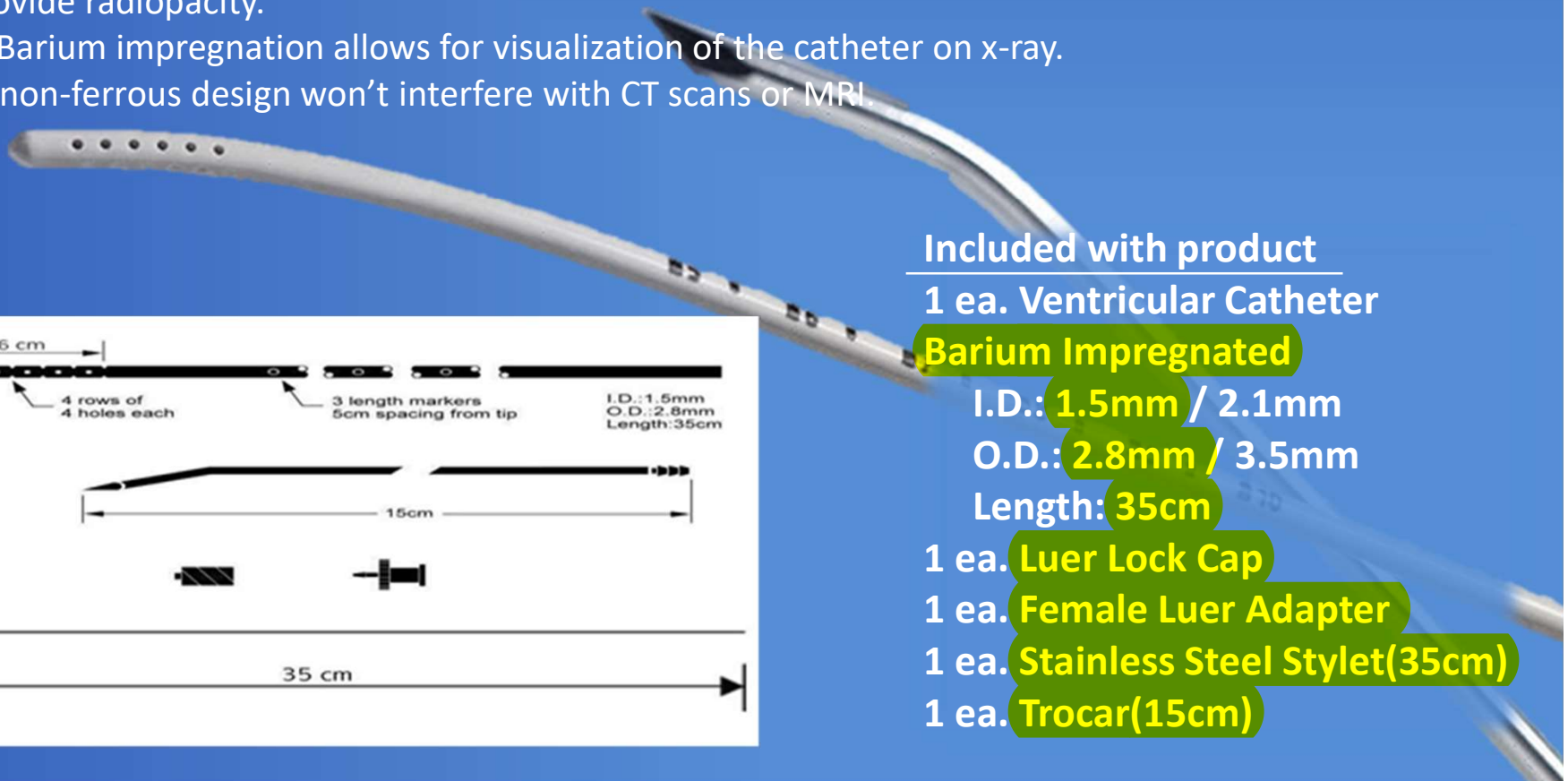
Barium impregnated **silicone catheter.**

Kink and compression resistant.

Stainless steel stylet allows catheter to be directed during catheter placement.

The catheter is fabricated from silicone elastomer tubing impregnated with barium to provide radiopacity.

- Barium impregnation allows for visualization of the catheter on x-ray.
- non-ferrous design won't interfere with CT scans or MRI.



### Included with product

1 ea. Ventricular Catheter

**Barium Impregnated**

I.D.: **1.5mm / 2.1mm**

O.D.: **2.8mm / 3.5mm**

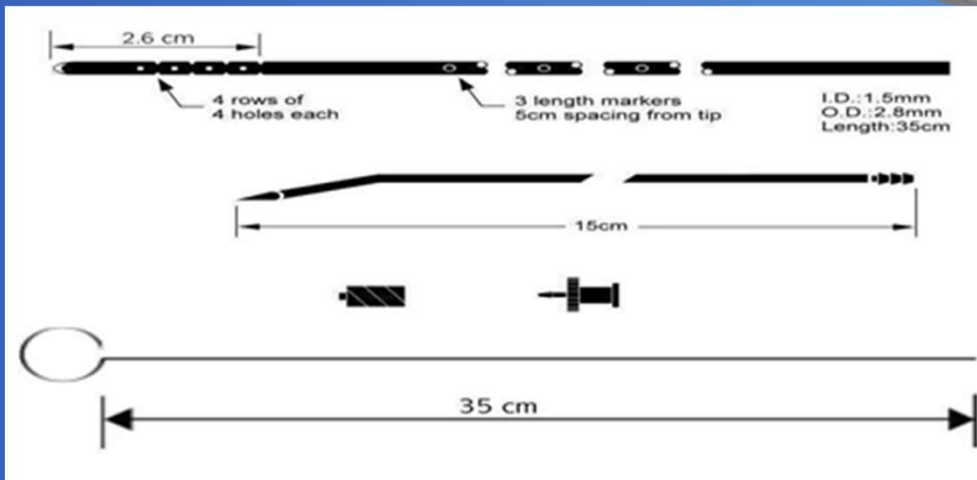
Length: **35cm**

1 ea. **Luer Lock Cap**

1 ea. **Female Luer Adapter**

1 ea. **Stainless Steel Stylet(35cm)**

1 ea. **Trocar(15cm)**



# BMI® Medical

Wellong Instruments Co., Ltd.

E-mail : [cctco@ms35.hinet.net](mailto:cctco@ms35.hinet.net)

Phone Number : +886-2-25719829 · +886-2-25413710

Fax Number : +886-2-25627884

Address : 2F., No.63, Linsen N. Rd., Zhongshan Dist.,  
Taipei City 104, Taiwan (R.O.C.)