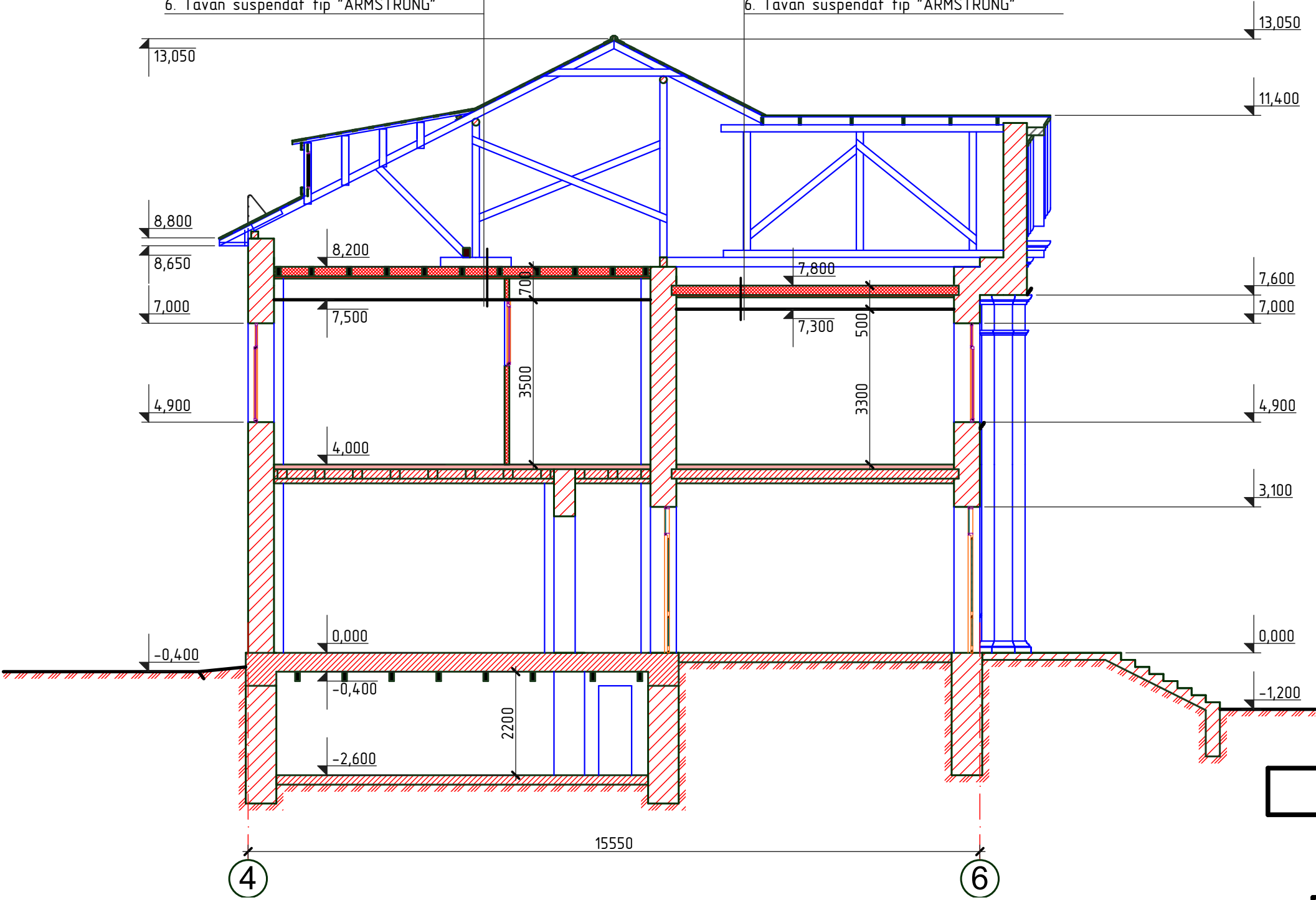


Sectiunea A-A

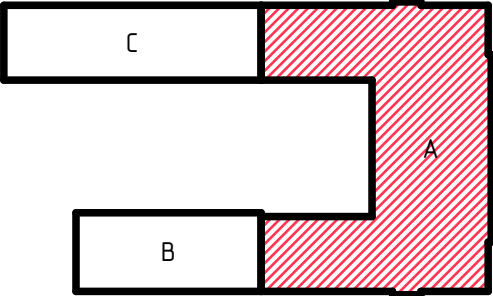
sc. 1:100

1. Membrana hidroizolanta "TEND"
2. Termoizolant: vata minerala bazazaltica, ignifuga $\gamma=125\text{ kg/m}^3$, $h=200\text{ mm}$
3. Membrana contravapori "TEND"
4. Grinzi din lemn 200x200 pas 800mm
5. Captusiala placi OSB $\delta=18\text{mm}$
6. Tavan suspendat tip "ARMSTRONG"

1. Membrana hidroizolanta "TEND"
2. Termoizolant: vata minerala bazazaltica, ignifuga $\gamma=125\text{ kg/m}^3$, $h=200\text{ mm}$
3. Membrana contravapori "TEND"
4. Grinzi din lemn 200x200 pas 800mm
5. Captusiala placi OSB $\delta=18\text{mm}$
6. Tavan suspendat tip "ARMSTRONG"



Schema cladirei



1. Plansa data se citeste cu pl. 8.

| | | | | | | | |
|----------|-----------------------------|--|-------|---|-------|----------------------------------|--------|
| 2019 | OBIECTIV nr. 02.12-D/19-SAC | | | Reparatia capitala a blocului lit "A", LT "N. Gogol" str. Academicianul Nicolae Filipp, 2 | | | |
| A.S.P | Mihaila V. | | 12.19 | Liceu Tioretic | Etapa | Plansa | Planse |
| I.S.P | Hihlat Em. | | 12.19 | | PE | 10 | |
| Elaborat | Gorbatii A. | | 12.19 | Sectiunea A-A | | SRL "Geo-Cad-Proiect" mun. Balti | |