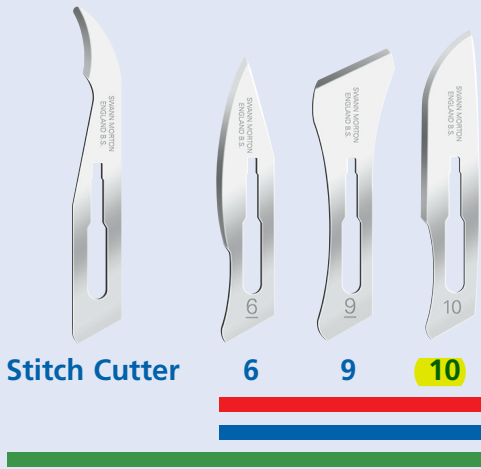


No 3 Fitment Surgical Handles & Blades

Standard Surgical Blades - Sterile

- █ Sterile Blades in Carbon Steel.
- █ Non-Sterile Blades in Carbon Steel.
- █ Sterile Blades in Stainless Steel.



Stitch Cutter

6

9

10



10A

11

11P

E11

E/11

12

12D

13

14

15

15A

15C

15T

D/15

16

40



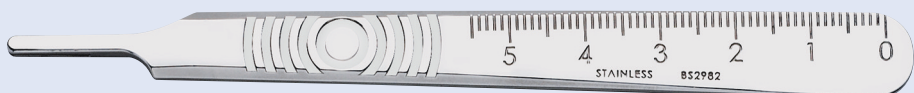
No B3L Handle



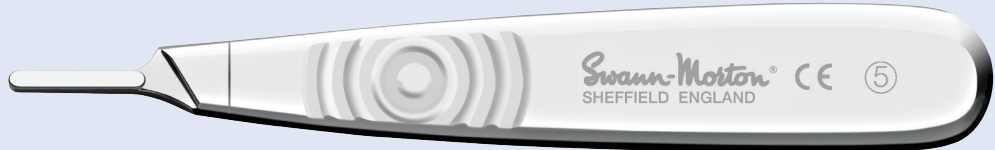
No B3 Handle



No 3 Handle



No 3 Handle (reversed)



No 5 Handle



No 7 Handle



No 9 Handle



No 3L Handle

PRODUCT DESCRIPTION	PATTERN	PRODUCT CODE	UDI
Swann Morton Sterile Carbon Steel Surgical Blade	10	<u>0201</u>	5033955002015
Swann Morton Sterile Carbon Steel Surgical Blade	10A	0202	5033955002022
Swann Morton Sterile Carbon Steel Surgical Blade	11	<u>0203</u>	5033955002039
Swann Morton Sterile Carbon Steel Surgical Blade	12	0204	5033955002046
Swann Morton Sterile Carbon Steel Surgical Blade	15	<u>0205</u>	5033955002053
Swann Morton Sterile Carbon Steel Surgical Blade	20	0206	5033955002060
Swann Morton Sterile Carbon Steel Surgical Blade	21	0207	5033955002077
Swann Morton Sterile Carbon Steel Surgical Blade	22	0208	5033955002084
Swann Morton Sterile Carbon Steel Surgical Blade	22A	0209	5033955002091
Swann Morton Sterile Carbon Steel Surgical Blade	23	0210	5033955002107
Swann Morton Sterile Carbon Steel Surgical Blade	24	0211	5033955002114
Swann Morton Sterile Carbon Steel Surgical Blade	25	0212	5033955002121
Swann Morton Sterile Carbon Steel Surgical Blade	26	0213	5033955002138
Swann Morton Sterile Carbon Steel Surgical Blade	27	0214	5033955002145
Swann Morton Sterile Carbon Steel Surgical Blade	25A	0215	5033955002152
Swann Morton Sterile Carbon Steel Surgical Blade	6	0216	5033955002169
Swann Morton Sterile Carbon Steel Surgical Blade	9	0217	5033955002176
Swann Morton Sterile Carbon Steel Surgical Blade	12D	0218	5033955002183
Swann Morton Sterile Carbon Steel Surgical Blade	14	0219	5033955002190
Swann Morton Sterile Carbon Steel Surgical Blade	15A	0220	5033955002206
Swann Morton Sterile Carbon Steel Surgical Blade	15C	0221	5033955002213
Swann Morton Sterile Carbon Steel Surgical Blade	16	0222	5033955002220
Swann Morton Sterile Carbon Steel Surgical Blade	18	0223	5033955002237
Swann Morton Sterile Carbon Steel Surgical Blade	19	0224	5033955002244
Swann Morton Sterile Carbon Steel Surgical Blade	E11	0225	5033955002251
Swann Morton Sterile Carbon Steel Surgical Blade	36	0236	5033955002367
Swann Morton Sterile Carbon Steel Surgical Blade	13	0239	5033955002398
Swann Morton Sterile Carbon Steel Surgical Blade	40	0240	5033955002404
Swann Morton Sterile Carbon Steel Surgical Blade	E11 (Sabre)	0263	5033955002633
Swann Morton Sterile Carbon Steel Surgical Blade	D15 (Sabre)	0265	5033955002657
Swann Morton Sterile Carbon Steel Surgical Blade	11P	0291	5033955002916
Swann Morton Sterile Carbon Steel Surgical Blade	15T	0292	5033955002923

Swann-Morton®

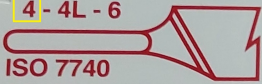


22

REF 0208

4-4L-6

ISO 7740
BS EN 27740



Swann-Morton®



10

REF 0201

3-3L-5-7-9-B3

ISO 7740
BS EN 27740

