

maXium®



80-092-00-04

maXium®

Kabelset für Software Update maXium®
Cable set for maXium® software update
Kit de cables para actualización de software maXium®
Kit de câbles pour mise à jour logiciel maXium®
Set di cavi per aggiornamento software maXium®

80-042-00-04

maXium® m

(100-240 V)

80-042-02-04

maXium® i

(100-240 V)

80-042-04-04

maXium® e

(100-240 V)

80-093-00-04

maXium®

Option bipolare Resektion
Bipolar resection option
Opción resección bipolar
Option résection bipolaire
Opzione resezione bipolare

80-093-01-04

maXium®

Option Einbindung in OR1 NEO/Karl Storz
Option integration into Karl Storz OR1 NEO system
Opción de integración en el sistema OR1 NEO/Karl Storz
Option intégration dans le système OR1 NEO/Karl Storz
Opzione integrazione nel sistema OR1 NEO/Karl Storz

80-093-02-04

maXium®

Option Einbindung in CORE nova®/Richard Wolf
Option integration into CORE nova®/Richard Wolf system
Opción de integración en el sistema CORE nova®/Richard Wolf
Option intégration dans le système CORE nova®/Richard Wolf
Opzione integrazione nel sistema CORE nova®/Richard Wolf

maXium® Beamer



80-044-00-04

maXium® Beamer

Nur zur Verwendung mit dem maXium®-Generator
For use only with the maXium® generator
Utilícese sólo con generador maXium®
A n'utiliser qu'avec générateur maXium®
Solo per l'utilizzo con generatore maXium®

Unit	Max. Output	Monopolar	Bipolar	Benutzer- oberfläche	Aktivierung	NE - Modes	Argon-Gas	Rauchgas- absaugung	Gefäßver- siegelung
MD 62	Monopolar 50 Watt (Cut) 30 Watt (Coag)	1 Cut 1 Coag	-	Analoganzeige (Drehregler)	Elektroden-Handgriff mit einer Taste oder Einpedal- Fußschalter, pneumatisch	Handzylinder- Neutral- elektrode		maXium® smart Vac oder marVac® mit iDetect	
miniCutter	Monopolar 80 Watt (Cut) 70 Watt (Coag) Bipolar 70 Watt	2 Cut 2 Coag	1 Coag	Analoganzeige (Drehregler)	Monopolar Elektroden-Handgriff mit einer Taste oder Einpedal-Fußschalter Bipolar Aktivierung nur über Einpedal-Fußschalter			maXium® smart Vac oder marVac® mit iDetect	
ME 102	Monopolar 100 Watt (Cut) 70 Watt (Coag) Bipolar 80 Watt	2 Cut 1 Coag	1 Coag	Analoganzeige (Drehregler)	Monopolar Elektroden-Handgriff oder Fußschalter Bipolar Aktivierung über Fußschalter oder über „Auto-Start“-Funktion			maXium® smart Vac oder marVac® mit iDetect	
ME MB 1	Monopolar 400 Watt (Cut) 250 Watt (Coag) Bipolar 100 Watt	3 Cut 2 Coag	1 Coag	Analoganzeige (Drehregler)	Monopolar Elektroden-Handgriff oder Fußschalter Bipolar Aktivierung nur über Fußschalter		MB 181	maXium® smart Vac oder marVac® mit iDetect	
ME MB 3	Monopolar 400 Watt (Cut) 250 Watt (Coag) Bipolar 100 Watt	4 Cut 3 Coag	1 Coag	Digitalanzeige (Drehregler)	Monopolar Elektroden-Handgriff oder Fußschalter Bipolar Aktivierung über Fußschalter oder über „Auto-Start“- Funktion		MB 181	maXium® smart Vac oder marVac® mit iDetect	
maXium® smart C	Monopolar 400 Watt (Cut) 200 Watt (Coag) Bipolar 120 Watt (Cut) 250 Watt (Coag)	6 Cut 9 Coag	2 Cut 2 Coag	Digitalanzeige (Touch-Screen Display)	Monopolar Elektroden-Handgriff oder Fußschalter Bipolar: Aktivierung über Fußschalter oder über „Auto-Start“- Funktion	 Baby Mega	maXium® smart Beam	maXium® smart Vac	
maXium®	Monopolar 360 Watt (Cut) 150 Watt (Coag) Bipolar 120 Watt (Cut) 320 Watt (Coag)	13 Cut 17 Coag	7 Cut 13 Coag	Digitalanzeige (Display mit Drehregler)	Monopolar Elektroden-Handgriff oder Fußschalter Bipolar Aktivierung über Fußschalter oder über Fingerschalter. Alternativ über „Auto-Start“-Funktion	 Baby Mega	maXium® Beamer	marVac® oder maXium® smart Vac mit maXium® smart Cart	SealSafe IQ

Übersicht
Anschlusskabel

Großer Koaxialstecker

Kleiner Koaxialstecker

Erbe Koaxialstecker Ø 8 mm

US-3-PIN-Stecker





TUR	Schnittstelle für HF-Zubehör	Anwendungsbereiche																			
		Allgemeinchirurgie	Dentalchirurgie	Dermatologie	Gastroenterologie	Gynäkologie	Herz- und Gefäßchirurgie	HNO-Chirurgie	Mund-, Kiefer- und Gesichtschirurgie	Neurochirurgie	Urologie	Viszeralchirurgie									
	1 monopolarer Ausgang • Großer Koaxialstecker	x																			
	1 monopolarer Ausgang • Großer Koaxialstecker 1 bipolarer Ausgang • Kleiner Koaxialstecker	x	x	x						x	x										
	1 monopolarer Ausgang • Großer Koaxialstecker • US-3-PIN-Stecker 1 bipolarer Ausgang • Kleiner Koaxialstecker	x	x	x						x	x										
mono- polare TUR	1 monopolarer Ausgang • Großer Koaxialstecker • US-3-PIN-Stecker 1 bipolarer Ausgang • Kleiner Koaxialstecker	x						x	x										x	x	
mono- polare TUR	m-Version 1 monopolarer Ausgang • Großer Koaxialstecker • US-3-PIN-Stecker • Bananenstecker 1 bipolarer Ausgang • US-2-PIN-Flachstecker • Kleiner Koaxialstecker	i-Version 1 monopolarer Ausgang • US-3-PIN-Stecker • Bananenstecker 1 bipolarer Ausgang • US-2-PIN-Flachstecker • Kleiner Koaxialstecker	x							x	x								x	x	
mono- polare TUR	m-Version 2 monopolare Ausgänge • Großer Koaxialstecker • US-3-PIN-Stecker • Bananenstecker 1 bipolarer Ausgang • US-2-PIN-Flachstecker • Kleiner Koaxialstecker • Bananenstecker	i-Version 2 monopolare Ausgänge • Bovie-Stecker • US-3-PIN-Stecker • Bananenstecker 1 bipolarer Ausgang • US-2-PIN-Flachstecker • Großer Koaxialstecker • Bananenstecker	e-Version 2 monopolare Ausgänge • Erbe-Koaxialstecker • US-3-PIN-Stecker • Bananenstecker 1 bipolarer Ausgang • US-2-PIN-Flachstecker • Großer Koaxialstecker • Bananenstecker	x						x	x	x	x	x	x	x	x				
Bipolare TUR und mono- polare TUR	m-Version 2 monopolare Ausgänge • Großer Koaxialstecker • US-3-PIN-Stecker • Bananenstecker 2 bipolare Ausgänge • US-2-PIN-Flachstecker • Kleiner Koaxialstecker • Bananenstecker • IQ-Stecker	i-Version 2 monopolare Ausgänge • Bovie-Stecker • US-3-PIN-Stecker • Bananenstecker 2 bipolare Ausgänge • US-2-PIN-Flachstecker • Bananenstecker • IQ-Stecker	e-Version 2 monopolare Ausgänge • Erbe-Koaxialstecker • US-3-PIN-Stecker • Bananenstecker 2 bipolare Ausgänge • US-2-PIN-Flachstecker • Großer Koaxialstecker • Bananenstecker • IQ-Stecker	x						x	x	x	x	x	x	x	x				



Unit	Max. Output	Monopolar	Bipolar	User interface	Activation	NE-mode	Argon gas	Smoke evacuator	Vessel sealing
MD 62	Monopolar 50 Watt (Cut) 30 Watt (Coag)	1 Cut 1 Coag	-	Analog display (Rotary switch)	Electrode handle with one pushbutton or single-pedal foot switch, pneumatic	Hand cylinder neutral electrode		maXium® smart Vac or marVac® with iDetect	
miniCutter	Monopolar 80 Watt (Cut) 70 Watt (Coag) Bipolar 70 Watt	2 Cut 2 Coag	1 Coag	Analog display (Rotary switch)	Monopolar Electrode handle with one pushbutton or single- pedal foot switch Bipolar Only with single-pedal foot switch			maXium® smart Vac or marVac® with iDetect	
ME 102	Monopolar 100 Watt (Cut) 70 Watt (Coag) Bipolar 80 Watt	2 Cut 1 Coag	1 Coag	Analog display (Rotary switch)	Monopolar Electrode handle or foot switch Bipolar Foot switch or „Auto-Coag-Start“ function			maXium® smart Vac or marVac® with iDetect	
ME MB 1	Monopolar 400 Watt (Cut) 250 Watt (Coag) Bipolar 100 Watt	3 Cut 2 Coag	1 Coag	Analog display (Rotary switch)	Monopolar Electrode handle or foot switch Bipolar Only with foot switch		MB 181	maXium® smart Vac or marVac® with iDetect	
ME MB 3	Monopolar 400 Watt (Cut) 250 Watt (Coag) Bipolar 100 Watt	4 Cut 3 Coag	1 Coag	Digital display (Rotary switch)	Monopolar Electrode handle or foot switch Bipolar Foot switch or „Auto-Coag-Start“ function		MB 181	maXium® smart Vac or marVac® with iDetect	
maXium® smart C	Monopolar 400 Watt (Cut) 200 Watt (Coag) Bipolar 120 Watt (Cut) 250 Watt (Coag)	6 Cut 9 Coag	2 Cut 2 Coag	Digital display (Touch-Screen Display)	Monopolar Electrode handle or foot switch Bipolar Foot switch or „Auto-Coag-Start“ function	 Baby Mega	maXium® smart Beam	maXium® smart Vac	
maXium®	Monopolar 360 Watt (Cut) 150 Watt (Coag) Bipolar 120 Watt (Cut) 320 Watt (Coag)	13 Cut 17 Coag	7 Cut 13 Coag	Digital display (Display with Rotary switch)	Monopolar Electrode handle or foot switch Bipolar Foot switch/ hand activation or „Auto-Coag-Start“ function	 Baby Mega	maXium® Beamer	marVac® or maXium® smart Vac with maXium® smart Cart	SealSafe IQ

**Overview
connectin cables**

Big coaxial plug



Small coaxial plug



Erbe coaxial plug Ø 8 mm



US-3-PIN plug





Bipolar resection	Connection socket for HF accessories			Surgical specialties																		
				Cardiovascular surgery	Dental surgery	Dermatology	ENT surgery	Gastroenterology	General surgery	Gynaecology	Oral and Craniofacial surgery	Neuro surgery	Urology	Visceral surgery								
	1 monopolar output • Big coaxial plug			x																		
	1 monopolar output • Big coaxial plug 1 bipolar output • Small coaxial plug			x	x	x		x		x												
	1 monopolar output • Big coaxial plug • US-3-PIN plug 1 bipolar output • Small coaxial plug			x	x	x		x		x												
mono-polar TUR	1 monopolar output • Big coaxial plug • US-3-PIN plug 1 bipolar output • Small coaxial plug									x	x	x							x	x		
mono-polar TUR	m-Version 1 monopolar output • Big coaxial plug • US-3-PIN plug • Banana plug 1 bipolar output • US-2-PIN plug • Small coaxial plug	i-Version 1 monopolar output • US-3-PIN plug • Banana plug 1 bipolar output • US-2-PIN plug • Small coaxial plug								x	x	x							x	x		
mono-polar TUR	m-Version 2 monopolar outputs • Big coaxial plug • US-3-PIN plug • Banana plug 1 bipolar output • US-2-PIN plug • Small coaxial plug • Banana plug	i-Version 2 monopolar outputs • Bovie plug • US-3-PIN plug • Banana plug 1 bipolar output • US-2-PIN plug • Big coaxial plug • Banana plug	e-Version 2 monopolar outputs • Erbe coaxial plug • US-3-PIN plug • Banana plug 1 bipolar output • US-2-PIN plug • Big coaxial plug • Banana plug	x				x		x	x	x	x	x	x	x	x		x	x		
Bipolar TUR and mono-polar TUR	m-Version 2 monopolar outputs • Big coaxial plug • US-3-PIN plug • Banana plug 2 bipolar outputs • US-2-PIN plug • Small coaxial plug • Banana plug • IQ plug	i-Version 2 monopolar outputs • Bovie plug • US-3-PIN plug • Banana plug 2 bipolar outputs • US-2-PIN plug • Banana plug • IQ plug	e-Version 2 monopolar outputs • Erbe coaxial plug • US-3-PIN plug • Banana plug 2 bipolar outputs • US-2-PIN plug • Big coaxial plug • Banana plug • IQ plug	x				x	x	x	x	x	x	x	x	x	x		x	x		





80-811-50-04

Monopolarer und bipolarer Fußschalter, explosionsgeschützt, AP-geprüft, IP X8, eintauchbar

Monopolar and bipolar foot switch, anti-explosive, AP-tested (anesthetics-proof), IP X8, immersible

Interruptor de pie monopolar y bipolar, antiexplosivo, controlada su aptitud para anestésicos, IP X8, sumergible

Interrupteur à pédale monopolaire et bipolaire, anti-explosif, catégorie AP, IP X8, immergeable

Interruttore a pedale monopolare e bipolare, anti-deflagrante, testato AP, IP X8, immergibile

ME 81 (nur bipolar, bipolar only, sólo bipolar, bipolaire uniquement, solo bipolare)

ME K1

ME K2

ME 82

miniCutter

ME 102 (nur bipolar, bipolar only, sólo bipolar, bipolaire uniquement, solo bipolare)



80-812-10-04

Einpedal-Fußschalter, pneumatisch, 2 m Luftschlauch

Single-pedal foot switch, pneumatic, 2-m air hose

Interruptor de pie de un pedal, neumático, manguera de 2 m

Interrupteur à une pédale pneumatique, tuyau à air de 2 m

Interruttore monopedale, pneumatico, con tubo flessibile per l'aria da 2 m

MD 62



80-811-04-04

Bipolarer Fußschalter, explosionsgeschützt, AP-geprüft, IP X8, eintauchbar

Bipolar foot switch, anti-explosive, AP-tested (anesthetics-proof), IP X8, immersible

Interruptor de pie, bipolar, antiexplosivo, controlada su aptitud para anestésicos, IP X8, sumergible

Interrupteur à pédale, bipolaire, anti-explosif, catégorie AP, IP X8, immergeable

Interruttore a pedale, bipolare, anti-deflagrante, testato AP, IP X8, immergibile

ME 81 (nur bipolar, bipolar only, sólo bipolar, bipolaire uniquement, solo bipolare)

ME 82

miniCutter (nur bipolar, bipolar only, sólo bipolar, bipolaire uniquement, solo bipolare)

ME 102 (nur bipolar, bipolar only, sólo bipolar, bipolaire uniquement, solo bipolare)

Für alle Fußschalter gilt die Kabellänge 5 m (Ausnahme 80-812-10-04)

Cable length for all foot switches: 5 m (exception 80-812-10-04)

Todos los interruptores de pedal usan un cable de 5 m de longitud (excepción 80-812-10-04)

La longueur de câble de 5 m est valable pour tous les interrupteurs à pédale (exception 80-812-10-04)

Il cavo lungo 5 m è indicato per tutti gli interruttori a pedale (eccezione 80-812-10-04)



80-811-30-04

Doppelpedal-Fußschalter, explosionsgeschützt, AP-geprüft, IP X8, eintauchbar
 Double-pedal foot switch, explosion- and anesthetics-proof (AP-tested), IP X8, immersible
 Interruptor de pie de doble pedal, antiexplosivo, controlada su aptitud para anestésicos, IP X8, sumergible
 Interrupteur à pédale double, anti-explosif, catégorie AP, IP X8, immergeable
 Interruttore a pedale doppio, anti-deflagrante, testato AP, IP X8, immergibile

ME 400/200 (nur bipolar, bipolar only, sólo bipolar, monopolaire uniquement, solo bipolare)
ME 401/411 (nur monopolar, monopolar only, sólo monopolar, monopolaire uniquement, solo monopolare)
ME M1/ME MB 1
ME CD1
ME MB 3
ME MB 2
maXium®
maXium® smart C



80-811-32-04

maXium®-SWAP-Mode-Doppelpedal-Fußschalter Eco, AP-geprüft, IP X8, eintauchbar
 maXium® double-pedal foot switch with SWAP mode Eco, AP-tested (anesthetics-proof), IP X8, immersible
 Interruptor de pie de doble pedal maXium® con modo SWAP Eco, controlada su aptitud para anestésicos, IP X8, sumergible
 Interrupteur à double pédale maXium® avec mode SWAP Eco, testé pour anesthésiants, IP X8, immergeable
 Interruttore a doppio pedale maXium® con modalità SWAP Eco, a prova di anestetici, IP X8, immergibile

maXium®
maXium® ab HW 06, Software V3.398
maXium® from HW06 and software V3.398
maXium® a partir del HW06 y software V3.398
maXium® à partir de la version matérielle 06, version logicielle V3.398
maXium® versione HW06 o superiore e software V3.398 o superiore
maXium® smart C



80-811-04-04

Fußschalter, explosionsgeschützt, AP-geprüft, IP X8, eintauchbar
 Foot switch, explosion- and anesthetics-proof (AP-tested), IP X8, immersible
 Interruptor de pie, antiexplosivo, controlada su aptitud para anestésicos, IP X8, eintauchbar
 Interrupteur à pédale, anti-explosif, catégorie AP, IP X8, immergeable
 Interruttore a pedale, anti-deflagrante, testato AP, IP X8, immergibile

ME 200/400 (nur bipolar, bipolar only, sólo bipolar, bipolaire uniquement, solo bipolare)
ME 401/411 (nur bipolar, bipolar only, sólo bipolar, bipolaire uniquement, solo bipolare)
maXium®

Für alle Fußschalter gilt die Kabellänge 5 m
 Cable length for all foot switches: 5 m
 Todos los interruptores de pedal usan un cable de 5 m de longitud
 La longueur de câble de 5 m est valable pour tous les interrupteurs à pédale
 Il cavo lungo 5 m è indicato per tutti gli interruttori a pedale

Convincing Precision!



marSeal IQ and **SealSafe**[®] IQ

The system for bipolar vessel sealing
for open and laparoscopic surgery



marSeal IQ



marSeal IQ



marSeal slim IQ



marSeal 5 IQ



marSeal IQ Instruments

The marSeal IQ instruments are a universally applicable instrument that, thanks to its modular design offering different shaft lengths, can be used for laparoscopic applications as well as open surgery.

marSeal allows you to occlude veins, arteries and tissue bundles permanently and reliably. Besides, the instrument features an integrated blade mechanism by which the sealed zone can be conveniently cut in the middle once the sealing process has been completed – without any need to exchange instruments!

The instrument can be completely taken apart and autoclaved, with the blade being the only disposable part used in its design. This offers a further benefit in the form of a significant cost reduction, compared with an entirely disposable instrument.

- ✓ Dissect
- ✓ Seal
- ✓ Cut

Intelligent vessel sealing with **marSeal IQ** and **SealSafe® IQ**

SealSafe® IQ

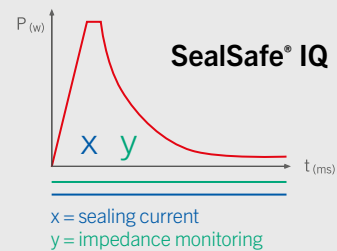
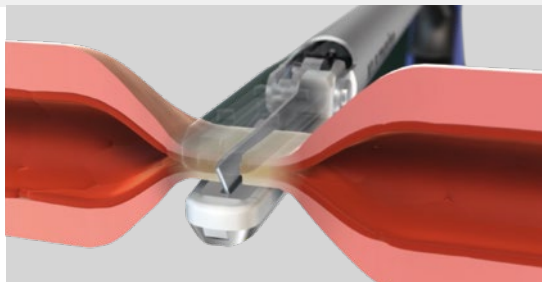
The bipolar vessel sealing system consisting of the maXium® high-frequency generator with its SealSafe® IQ current and the bipolar marSeal instruments allows you to seal vessels and tissue bundles effectively and lastingly without any need for previous dissection or detailed exposure of the tissue to be sealed.

Thanks to the precise SealSafe® IQ current specially adapted to this kind of application, only the tissue located between the instrument's jaws is sealed – lateral thermal tissue damage can thus be kept to an absolute minimum. This is explained by the high power-to-voltage ratio (high output power but low voltage) that is typical of the SealSafe® IQ current, distinguishing it from the conventional bipolar HF technique.

Besides, the SealSafe® IQ current has been optimized to reduce tissue adhesion or instrument incrustation drastically and prevent tissue carbonization as long as the current is used as intended.

marSeal IQ instruments and maXium® — the bipolar sealing system for fast and safe interventions

The reusable sealing system — permanent occlusion of veins,
arteries and tissue bundles with subsequent transection
of the sealed tissue — no instrument exchange required!



Pressure (p) plus electric current (I) achieve the sealing

Due to the effective combination of high pressure (p) and electric current (I), a permanently sealed zone is reliably created on arteries, veins or tissue bundles. The instrument's ratchet plays a vital role here because it is important for the pressure to be maintained and kept constant throughout the sealing process.

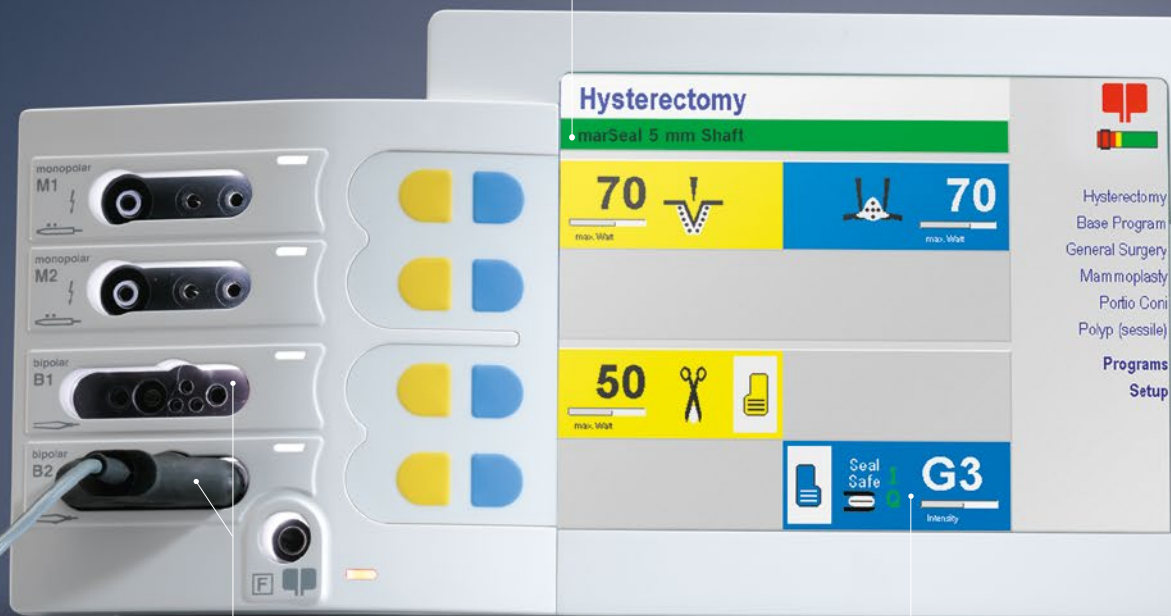
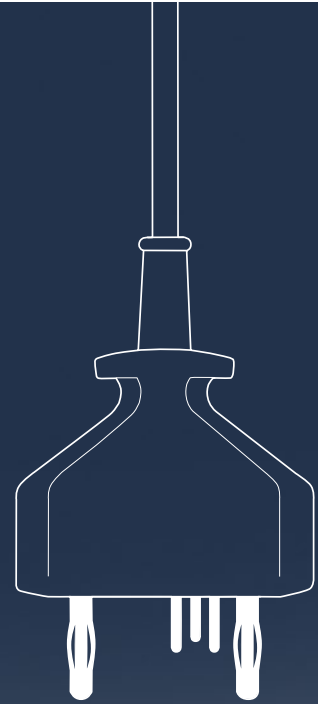
During this process, endogenous structural proteins such as collagen and elastin are transformed so that a permanently sealed zone is created as a result.

This sealing method needs no exogenous materials such as sutures and clips at all. Advantage: Less postoperative pain, since tissue structures are left completely intact (e.g. no constriction by sutures).

Plug and Play – automatic identification of instruments with intelligent IQ

As soon as an IQ instrument is connected, the maXium® automatically displays the name of the connected instrument and assigns the appropriate current type with an appropriate default value. When connecting an instrument that is actuated via the foot switch, the foot switch selection menu is automatically called up. If you choose not to use the instrument-specific default values, you can change them according to your individual needs and save them for the specific program as usual.

The advantage: When the IQ instrument is connected again, your individual values appear instead of the default values. At present, the following products are available with the IQ function in connection with the SealSafe® IQ current: marSeal IQ, marSeal slim IQ and marSeal5 IQ.



Displaying the name of the connected instrument

Use of the two bipolar connecting sockets

Automatic assignment of the required current type and set-up of the required performance parameters

Instead of one-way, more ways for all,
who take responsibility

Advantages offered by the marSeal IQ instruments

- Dissecting, sealing, cutting – no instrument exchange required
- Reliable sealing with easy transection of the sealed tissue (for vessels up to 7 mm with a burst pressure of over 360 mm Hg)
- Supported by the maXium® HF unit and its optimally adapted SealSafe® IQ current, marSeal
 - minimizes tissue adhesion and resulting incrustation of contact surfaces
 - reduces tissue damage from lateral heat spread (< 2 mm)
 - provides an efficient, time-saving sealing process
 - offers automatically the type of current belonging to the instrument, together with a suitable default value
- Activation of the current can be performed directly by means of the push buttons integrated into the electrode handle. There is no foot switch necessary for activation.
- The ratchet integrated into the handle ensures that a constant pressure is applied to the target tissue as required for effective sealing
- The ergonomic design of the handle provides for ease of use, preventing fatigue in the surgeon's hand during the sealing and cutting process
- Easy application of the instrument to the target tissue as the tubular shaft can be rotated by 360°
- Cost reduction due to minimal share of disposables
- Modular system with different shaft lengths for laparoscopic applications as well as open surgery
- Easy cleaning as the instrument can be taken apart completely
- Validated cleaning process
- Autoclavable at 134°C (273.2°F), acc. to ISO 17665-1



marSeal – occlude and dissect without changing instrument

It was a question of conviction, to develop these reusable instruments for the bipolar sealing of vessels. KLS Martin has succeeded in offering an alternative to the use of one-way instruments with the marSeal instruments.

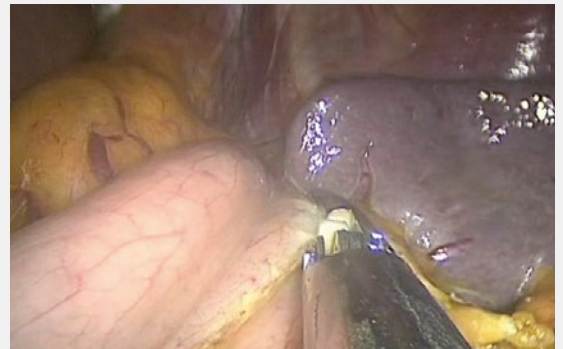
By using marSeal, far less special waste is created, which needs to be disposed of at high cost and harms the environment. The marSeal instruments require a minimum amount of one-way materials. Only blades or blade holders are disposable products. In comparison: 50 blade holders for the marSeal5 IQ create 0.5 kg of waste. 50 one-way products create nearly 15 kg of waste. The instruments are also economical: When using marSeal instruments, the costs per application (marSeal purchase price + set-up costs + one-off costs) are only around $\frac{1}{4}$ of the costs of a comparable disposable instrument.

In addition to the economic benefits, the instrument also has many medical benefits. The combination of instrument and special sealing current allows for a shorter operating time, less blood loss and thus less physical strain for the patient.

Modular system Instruments for laparoscopic applications and open surgery



Sigmoidectomy with marSeal slim IQ



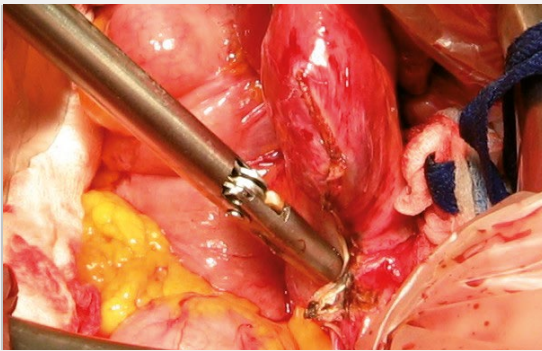
Nissen fundoplication with marSeal slim IQ

Application of marSeal IQ in gynecology:

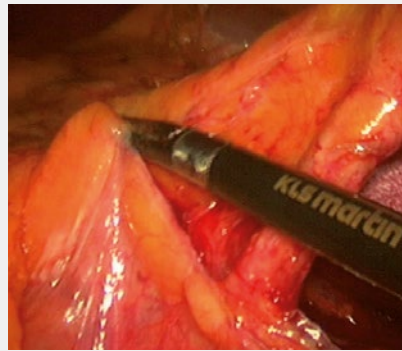
- Laparoscopic Supracervical Hysterectomy (LASH)
- Laparoscopically Assisted Vaginal Hysterectomy (LAVH)
- Total Laparoscopic Hysterectomy (TLH)
- Vaginal hysterectomy
- Abdominal hysterectomy
- Ovariectomy and salpingectomy
- Adhesiolysis
- Cystectomy

Application of marSeal IQ in general surgery:

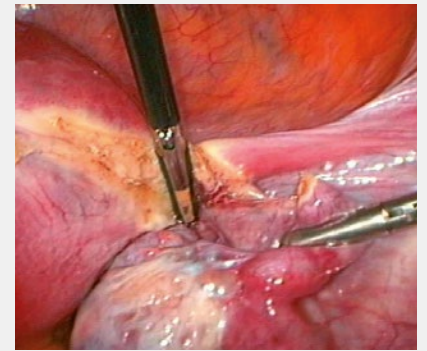
- Colectomy
- Nissen fundoplication
- Gastrectomy
- Splenectomy
- Adrenalectomy
- Nephrectomy
- Cholecystectomy



Abdominal hysterectomy with marSeal IQ



Lap. sigmoidectomy with marSeal5 IQ



LASH with marSeal5 IQ

Product feature comparison

	marSeal5 IQ	marSeal5 IQ IQ short	marSeal IQ marSeal slim IQ
Shaft, rotatable	5 mm	5 mm	10 mm
Shaft length	370 mm	200 mm	200 mm 370 mm
IQ connector (requires maXium® with HW 06 or higher and software V3.400 or higher)	✓	✓	✓
“Plug and Play” – smart bipolar vessel sealing forceps with instrument identification feature	✓	✓	✓
Current and output power automatically set on maXium® HF generator	✓	✓	✓
Retention of the maXium®’s proven program philosophy	✓	✓	✓
Manual and foot activation	✓	✓	✓
Integrated cutting blade	✓	✓	✓
Blade/blade shaft as a non-sterile disposable product	✓	✓	✓
Blade/blade shaft as a sterile disposable product	✓		✓



Convincing Precision!



The marSeal instrument set
at a glance

marSeal IQ

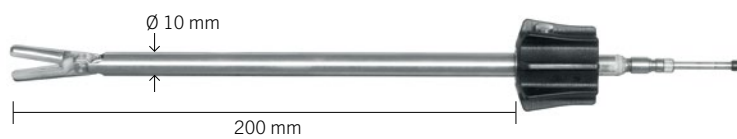
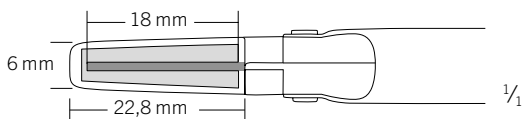
marSeal system

Instrument, complete*, without blades	
80-630-41-04	"IQ"-version

Components	
80-630-45-04	Handle "IQ"
80-630-12-04	Tubular shaft **
80-630-15-04	Disposable blade, SU = 6/pack
80-630-16-04	Disposable blade, sterile, SU = 10/pack
80-630-17-04	Cleaning tool
80-630-18-04	Flushing adapter

* incl. 80-630-17-04, 80-630-18-04

** incl. 80-630-17-04





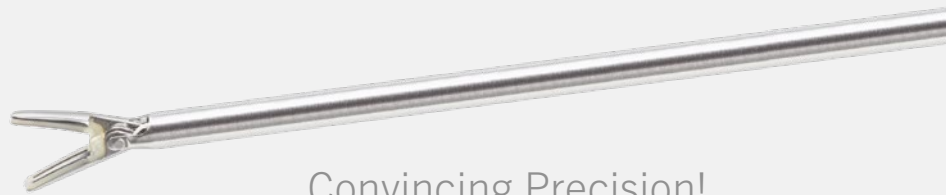
marSeal instrument components

	Handle, IQ-connector (HW 06) 80-630-45-04	Tubular shaft* 200 mm 80-630-12-04	Blade 80-630-15-04
marSeal cpl. 200 mm, IQ-connector (HW 06), 80-630-41-04	X	X	X

*incl. blade shaft, cleaning tool and flushing adapter



4 m/13 ft.



Convincing Precision!

The marSeal slim instrument set
at a glance

marSeal slim IQ

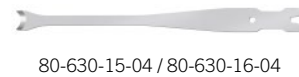
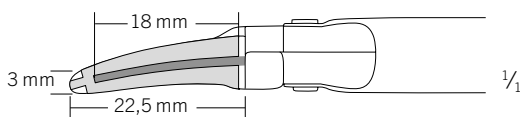
marSeal slim system

Instrument, complete*, without blades	
80-630-42-04	"IQ"-version, shaft length 370 mm
80-630-43-04	"IQ"-version, shaft length 200 mm

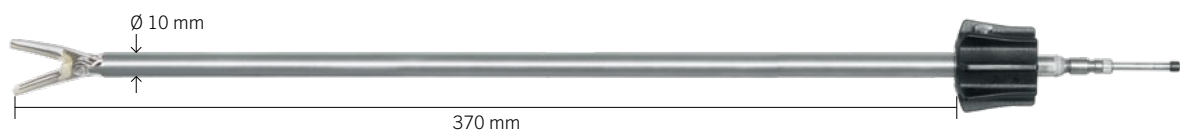
Components	
80-630-45-04	"IQ"-handle
80-630-34-04	Tubular shaft, 370 mm long **
80-630-35-04	Tubular shaft, 200 mm long **
80-630-15-04	Disposable blade, SU = 6/pack
80-630-16-04	Disposable blade sterile, SU = 10/pack
80-630-17-04	Cleaning tool
80-630-18-04	Flushing adapter

* incl. 80-630-17-04, 80-630-18-04

** incl. 80-630-17-04



80-630-15-04 / 80-630-16-04





marSeal slim instrument components

	Handle, IQ-connector (HW 06) 80-630-45-04	Tubular shaft slim* 370 mm 80-630-34-04	Tubular shaft slim* 200 mm 80-630-35-04	Blade 80-630-15-04
marSeal slim compl. 370 mm Conector IQ (HW 06) 80-630-42-04	X	X		X
marSeal slim compl. 200 mm Conector IQ (HW 06) 80-630-43-04	X		X	X

*incl. blade shaft, cleaning tool and flushing adapter



4 m/13 ft.



Convincing Precision!



The marSeal5 instrument set
at a glance

marSeal5 IQ
marSeal5 IQ short

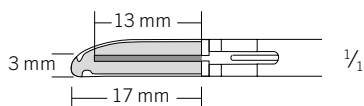
marSeal5 system

Instrument, complete*, without blades	
80-630-50-04	Version "IQ", shaft length 370 mm
80-630-90-04	Version "IQ" short, shaft length 200 mm

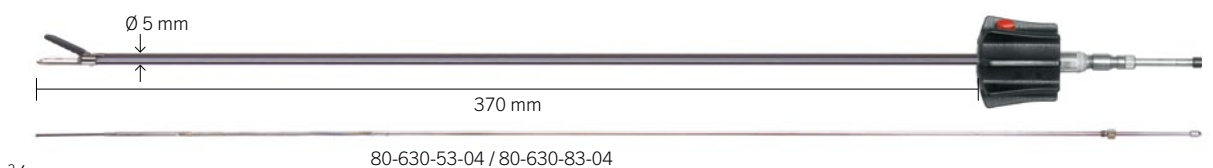
Components	
80-630-52-04	Handle "IQ"
80-630-51-04	Tubular shaft, 370 mm long, cleaning tool and flushing adapter
80-630-92-04	Tubular shaft for marSeal5 IQ short, 200 mm long, cleaning tool and flushing adapter
80-630-53-04	Disposable blade insert, 370 mm long, SU = 6/pack
80-630-91-04	Disposable blade insert for marSeal5 IQ <i>short</i> , 200 mm long, SU = 6/pack
80-630-83-04	Disposable blade insert, 370 mm long, sterile, SU = 10/pack
80-630-58-04	Cleaning tool
80-630-59-04	Flushing adapter

* incl. 80-630-58-04, 80-630-59-04

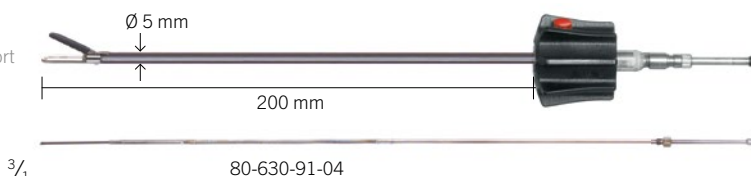
** incl. 80-630-58-04



marSeal5 IQ



marSeal5 IQ short





marSeal5 instrument components

	Handle IQ-connector (HW 06) 80-630-52-04	Tubular shaft* 370 mm 80-630-51-04	Tubular shaft* 200 mm 80-630-92-04	Blade shaft with blade 370 mm 80-630-53-04	Blade shaft with blade 200 mm 80-630-91-04
marSeal5 cpl., 370 mm, IQ-connector (HW 06), 80-630-50-04	X	X		X	
marSeal5 <i>short</i> cpl., 200 mm IQ-connector (HW 06), 80-630-90-04	X		X		X

*incl. blade shaft, cleaning tool and flushing adapter



4 m/13 ft.

KLS Martin Group

KLS Martin Australia Pty Ltd.

Sydney · Australia
Tel. +61 2 9439 5316
australia@klsmartin.com

KLS Martin do Brasil Ltda.

São Paulo · Brazil
Tel. +55 11 3554 2299
brazil@klsmartin.com

KLS Martin Medical (Shanghai) International Trading Co. Ltd.

Shanghai · China
Tel. +86 21 5820 6251
china@klsmartin.com

KLS Martin India Pvt Ltd.

Chennai · India
Tel. +91 44 66 442 300
india@klsmartin.com

Martin Italia S.r.l.

Milan · Italy
Tel. +39 039 605 67 31
italia@klsmartin.com

Nippon Martin K.K.

Tokyo · Japan
Tel. +81 3 3814 1431
nippon@klsmartin.com

KLS Martin SE Asia Sdn. Bhd.

Penang · Malaysia
Tel. +604 505 7838
malaysia@klsmartin.com

Martin Nederland/Marned B.V.

Huizen · The Netherlands
Tel. +31 35 523 45 38
nederland@klsmartin.com

Gebrüder Martin GmbH & Co. KG

Moscow · Russia
Tel. +7 499 792-76-19
russia@klsmartin.com

Gebrüder Martin GmbH & Co. KG

Dubai · United Arab Emirates
Tel. +971 4 454 16 55
middleeast@klsmartin.com

KLS Martin UK Ltd.

London · United Kingdom
Tel. +44 1189 000 570
uk@klsmartin.com

KLS Martin LP

Jacksonville · Florida, USA
Tel. +1 904 641 77 46
usa@klsmartin.com

Do you know how to get all important information
about the KLS Martin Energy Devices?

Please download KLS Martin App Energy Devices!
The App is available for Android and iOS.



[https://itunes.apple.com/de/app/
klsmartin-energy-devices/id1198171415?l=de&ls=1&mt=8](https://itunes.apple.com/de/app/klsmartin-energy-devices/id1198171415?l=de&ls=1&mt=8)



[https://play.google.com/store/apps/
details?id=com.klsmartin.energydevices](https://play.google.com/store/apps/details?id=com.klsmartin.energydevices)

Gebrüder Martin GmbH & Co. KG

A company of the KLS Martin Group

KLS Martin Platz 1 · 78532 Tuttlingen · Germany
P.O. Box 60 · 78501 Tuttlingen · Germany
Tel. +49 7461 706-0 · Fax +49 7461 706-193
info@klsmartin.com · www.klsmartin.com



Kombi-Instrument für die offenchirurgische Gefäßversiegelung
 Combination instrument for open surgical vessel sealing
 Instrumento combinado para el sellado vascular en cirugía abierta
 Instrument combiné de scellement de vaisseaux sanguins pour la chirurgie ouverte
 Strumento combinato per la sigillatura vascolare nella chirurgia a cielo aperto

marClamp® Cut IQ



✓ Präparieren	Dissect	Disecionar	Disséquer	Sezionare
✓ Versiegeln	Seal	Sellar	Clamper	Sigillare
✓ Trennen	Cut	Cortar	Couper	Separare
✓ Plug & Play	Plug & Play	Plug & Play	Plug & Play	Plug & Play
✓ Kein Instrumentenwechsel	No need to exchange instruments	No es necesario cambiar de instrumento	Il n'est pas nécessaire de changer d'instruments	Senza necessità di cambiare strumento
✓ Wiederverwendbar	Reusable	Reutilizable	Réutilisable	Riutilizzabile

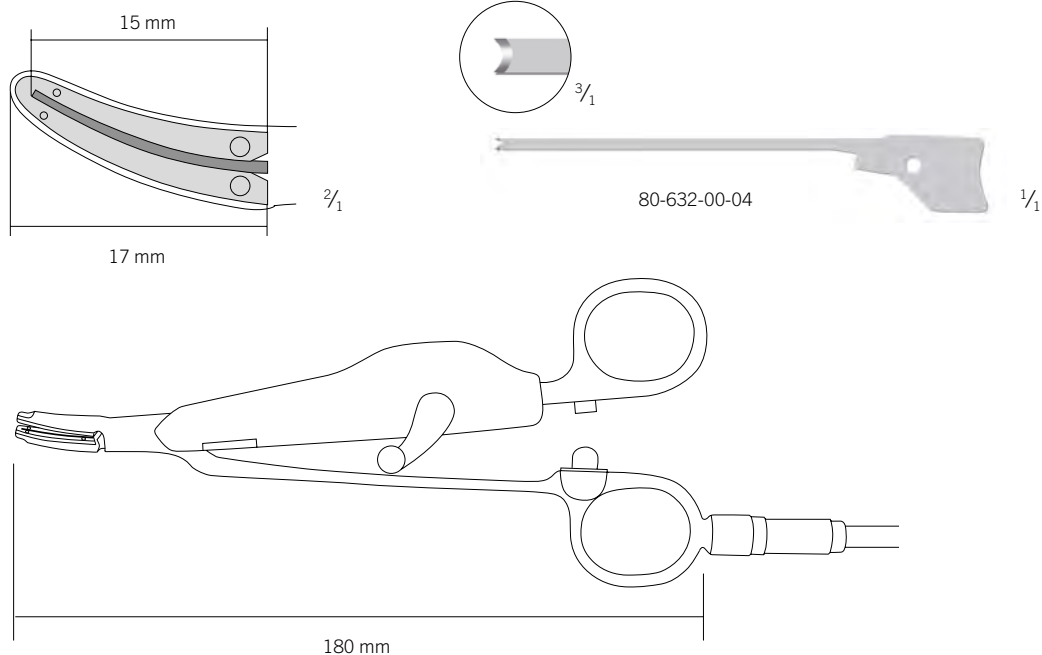
	marClamp®-Cut-IQ-System Instrument, komplett*, ohne Klingen	marClamp® Cut IQ System Instrument, complete*, without blades	Sistema marClamp® Cut IQ Instrumento, completo*, sin cuchillas
80-632-18-04	marClamp® Cut IQ, 18 cm	marClamp® Cut IQ, 18 cm	marClamp® Cut IQ, 18 cm

	Komponenten	Components	Componentes
80-632-00-04	Klinge für marClamp® Cut IQ, steril, VE=10	Blade for marClamp® Cut IQ, sterile, pack of 10	Cuchilla para marClamp® Cut IQ, estéril, UE=10
80-630-58-04	Reinigungswerkzeug	Cleaning tool	Herramienta de limpieza
80-632-01-04	Set Reinigungsbürsten, 3 Stück	Set of cleaning brushes, 3 pcs.	Juego de cepillos de limpieza, 3 unidades

* incl. 80-630-58-04, 80-632-01-04
 Klingen müssen separat bestellt werden

* incl. 80-630-58-04, 80-632-01-04
 Blades have to be ordered separately

* incl. 80-630-58-04, 80-632-01-04
 Las cuchillas se deben encargar por separado



Instrumentarium zur bipolaren Gefäßversiegelung
 Instruments for bipolar vessel sealing
 Instrumentos para el sellado vascular bipolar
 Instruments pour la clampage vasculaire bipolaire
 Strumenti di sigillatura vascolare bipolare



Integrierter Schalter zur Handaktivierung
 Integrated switch for manual activation
 Interruptor integrado para la activación manual
 Interrupteur intégré pour l'activation manuelle
 Interruttore integrato per l'attivazione manuale



5

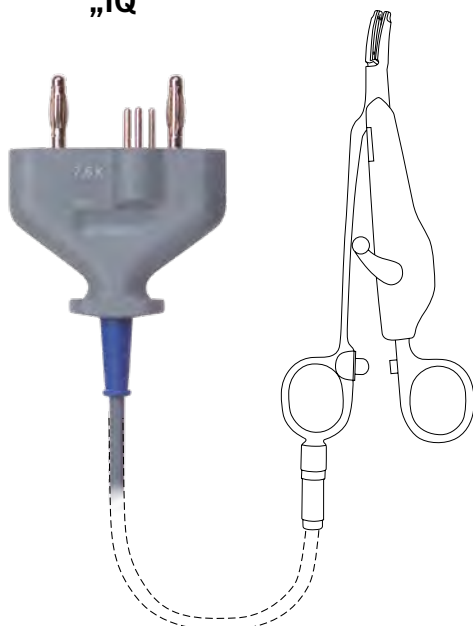
	Système marClamp® Cut IQ Instrument, complet*, sans lames	Sistema marClamp® Cut IQ Strumento, completo*, senza lame
80-632-18-04	marClamp® Cut IQ, 18 cm	marClamp® Cut IQ, 18 cm

	Composants	Componenti
80-632-00-04	Lame pour instrument marClamp® Cut IQ, stérile, UC=10	Lama per marClamp® Cut IQ, sterile, confezione=10 unità
80-630-58-04	Outil de nettoyage	Strumento di pulizia
80-632-01-04	Jeu de brosses de nettoyage, 3 unités	Set di spazzolini di pulizia, 3 pezzi

* incl. 80-630-58-04, 80-632-01-04
 Les lames doivent être commandées séparément

* incl. 80-630-58-04, 80-632-01-04
 Le lame devono essere ordinate a parte

„IQ“



Weitere Informationen entnehmen Sie bitte der separaten Broschüre.
 For further information please refer to our separate product brochure.
 Encontrará informaciones adicionales en el folleto individual.
 Vous trouverez des informations supplémentaires dans la brochure.
 Per ulteriori informazioni vedasi il prospetto separato.

EC Declaration of Conformity

Item designation: Electro-Surgery-Accessories

Item number: see list of products 04_0231_V01 attached

Classification: see list of products attached
Class I, Rule 1
acc. to Annex IX to the Council Directive 93/42/EEC

We

Gebrüder Martin GmbH & Co. KG
KLS Martin Platz 1
78532 Tuttlingen
Germany

hereby declare on our sole responsibility that the medical devices specified above have been subjected to a conformity assessment procedure complying with Article 11 of the EC Council Directive 93/42/EEC.

The following assessment procedure has been used:

Annex VII to Council Directive 93/42/EEC of 14 June 1993
concerning medical devices with amending Directive 2007/47/EC.

Applied standards: DIN EN 60601-1 und EN 60601-2-2

Tuttlingen, 2018-09-03



Michael Martin
President Marketing

i.V. 

Uwe Ott
Head of Product Management
Electro Surgery and Laser Systems

The present declaration of conformity is only valid together with the attached list of products as well as temporarily until 2022-05-12.

Attachment 04_0231_V01 to EC Declaration of Conformity

Item number	Item Designation	Classification: Class	Classification: Rule
80-046-01-04	RETROFIT ISOLAT.TRANSF.1000VA,MAXIUMCART		1
80-047-01-04	RETROFIT ISOLAT.TRANSF.1200VA,MAXI.C.II		1
80-225-01-04	CONN.CABLE,4M,F.ELECTR.HANDLE, MARTIN		1
80-225-02-04	CONN.CABLE,4M,F.ELECTR.HANDLE, ERBE		1
80-227-03-04	Cable f. smartPen 80-227-00-04, 4m, I		1
80-251-00-04	ADAPTER MONOPOLAR 8 MM ACCESSORIES BOVIE		1
80-285-40-04	CABLE MON. 4M F. ISOL.-FORC., LARGE COAX		1
80-285-50-04	CABLE MON. 5M F. ISOLIT-FORC.,LARGE COAX		1
80-285-51-04	CABLE BIP. 4 M W. STORZ PLUG, SMALL COAX		1
80-285-55-04	CABLE MON. 4M, F. ISOLIT-FORC., 3 PIN		1
80-286-30-04	BIPOLAR CABLE, LARGE COAX, 3M		1
80-286-40-04	BIPOLAR CABLE, ANGL. PL., L. COAX, 4M		1
80-286-50-04	BIPOLAR CABLE, LARGE COAX, 5M		1
80-286-60-04	Cable, bip., PL Rectang, 4 m ERBE		1
80-286-80-04	Cable, bip., PL Aesc., 4 m ERBE		1
80-286-94-04	CABLE F.MONOP. RESECTOSCOPE OLYMPUS, I/E		1
80-286-95-04	CABLE F.MONOP.RESECTOSCOPE WOLF, I/E		1
80-286-96-04	CABLE F.MONOP. RESECTOSCOPE STORZ, I/E		1
80-287-33-04	BIPOLAR CABLE, SMALL COAX, 3M		1
80-287-53-04	BIPOLAR CABLE, SMALL COAX, 5M		1
80-287-60-04	Cable, bip., PL Rectang, 4 m KLS Martin		1
80-287-72-04	BIP.-CABLE, 2 PIN, 38 MM, 5 M		1
80-287-80-04	Cable, bip., PL Aesc., 4 m KLS Martin		1
80-287-89-04	BIP.-CABLE, VALLEYL-UNIT, MARTIN-INS. 3M		1
80-287-90-04	BIP.-CABLE, VALLEYL-UNIT, MARTIN-INS. 5M		1
80-287-94-04	CABLE F.BIP.RESECTOSCOPE OLYMPUS, I/E		1
80-287-95-04	CABLE F.BIP.RESECTOSCOPE WOLF, I/E		1
80-287-96-04	CABLE F.BIP.RESECTOSCOPE STORZ, I/E		1
80-288-53-04	BIP.CABLE 5M VALLEYLAB FORC.->MARTIN ME		1
80-288-55-04	CONN.CABLE 5M,F.BIPOLAR SCISSORS ETHICON		1
80-288-57-04	CABLE F.BIP.SCISSOR ETHICON, 2-PIN, 5M		1
80-288-60-04	Cable, bip., PL Rectang, 4 m internat.		1
80-288-70-04	BIP. CABLE F.ARTHR.ELECTR.,3M,SMALL COAX		1
80-288-72-04	BIP.CABLE F. ARTHR.ELECTRODE,3M,INTERNAT		1
80-288-74-04	BIP.CABLE F.ARTHR.ELECTRODE,3M,F.ME 411		1
80-288-80-04	Cable, bip., PL Aesc., 4 m internat.		1
80-289-40-04	CABLE F.INSTR.WITH 3MM PIN LARGE KOAX 4M		1
80-289-41-04	MONOP.CABLE 3-PIN/HF-INSTR. D 3 MM		1
80-289-42-04	MONOP.CONN.CABLE ERBE/MIS-INSTR. D=3MM		1
80-290-40-04	MONOP.CABLE 3-PIN/HF-INSTR. D 3,2 MM		1
80-291-40-04	BIP.CONN. CABLE, ANGL. PL.,4 M, MARTIN		1
80-293-40-04	BIP.CONN. CABLE, ANGL. PL.,4 M, INTERNAT		1
80-294-40-04	CABLE F. DISP.NEUTRAL-ELECTR.,4M, MARTIN		1
80-294-43-04	CABLE F.DISP. NEUTRAL-ELECTR., 4M, ERBE		1
80-294-44-04	CABLE F.DISP. NEUTRAL-ELECTR.4M, INTERN.		1
80-310-04-04	HAND CYLINDER NEUTRAL ELECTR. CABLE 4M		1
80-344-11-04	ADAPTER VALLEYLAB NE-PLUG TO MARTIN UNIT		1
80-460-04-04	ADAPTOR 4 MM TO 1,6 MM DIAM.		1
80-531-00-04	ADAPTOR 4MM TO 2,4MM		1
80-532-00-04	ADAPTOR 4 MM TO 0,8MM		1
80-533-00-04	ADAPTOR, L=20MM, 1,6MM TO 0,8MM		1
80-533-01-04	ADAPTOR, L=10MM, 1,6MM TO 0,8MM		1
80-534-06-04	ELECTRODE EXTENS.L=7CM D4MM		1
80-534-12-04	ELECTRODE EXTENS.L=12CM D4MM		1

Attachment 04_0231_V01 to EC Declaration of Conformity

Item number	Item Designation	Classification: Class	Classification: Rule
80-630-17-04	CLEANING ADAPTER FOR MARSEAL	I	1
80-630-18-04	Flushing adapter for marseal	I	1
80-630-58-04	Cleaning adapter marSeal5/marClamp Cut	I	1
80-630-59-04	Flushing adapter for marseal 5	I	1
80-633-12-04	marSeal5plus Reinigungswerkzeug	I	1
80-678-05-04	ELECTRODE EXT.2,4MM,LENGTH 14CM	I	1
80-790-00-04	BIP.PORT EXPANDER MAXIUM HW06,MARTIN ACC	I	1
80-790-01-04	BIP.PORT EXPANDER MAXIUM HW06,INTERN.ACC	I	1
80-790-02-04	BIP.PORT EXPANDER MAXIUM HW06,ERBE ACCES	I	1
80-793-02-04	BIPO.L.ADAPT.CABLE,MARTIN UNIT/INTER.ACC.	I	1
80-794-02-04	BIP.ADAPT.F.MARTIN UNITS I-VERS./VALLEYL	I	1
80-795-02-04	BIP. ADAPTER F.MARTIN UNITS /ERBE ACCES.	I	1
80-795-03-04	MON.ADAPT.CABLE ERBE UNITS/MARTIN ACCESS	I	1
80-795-05-04	Adapter monop., ACC. int. PL. KLS Martin	I	1
80-795-06-04	Adapter monop. Erbe access., Plug 3-Pin	I	1
80-796-02-04	BIPO.LAR ADAPT.CABLE MARTIN UNIT/ERBE ACC	I	1
80-796-03-04	NE-ADAPTER, PL "I" TO 6,3MM-"M"	I	1
80-797-02-04	BIP.ADAPT.CABLE ERBE UNITS/MARTIN ACCESS	I	1
80-811-04-04	FOOT SWITCH, SINGLE PEDAL, PL. 3 PIN, 5M	I	1
80-811-30-04	FOOT SWITCH, DOUBLE PEDAL, PL. 4 PIN, 5M	I	1
80-811-32-04	FOOT SWITCH DOUBLE PED.ECO, SWAP-MODE	I	1
80-811-50-04	FOOT SWITCH, SINGLE PEDAL, PL. 3 PIN, 5M	I	1
80-812-10-04	FOOT SWITCH PNEUMATIC MD30/50/62	I	1
80-821-02-04	FOOT SWITCH, DOUBLE PEDAL, PL. 4 PIN, 5M	I	1
80-821-03-04	FOOT SWITCH DOUBLE PED F.MAXIUM SWAP-MOD	I	1
80-821-04-04	FOOT SWITCH DOUBLE 01-GEN	I	1
80-821-05-04	FOOD SWITCH DOUBLE-PEDAL RUBBER	I	1
80-824-01-04	FOOT SWITCH; DOUBLE PEDAL/F.ME81	I	1
80-825-30-04	BIPO.LAR DOUBLE FOOTSWITCH, ANTI EXPLOSIV	I	1
80-830-00-04	Footswitch,Double,Pl.4 Pin,5m	I	1
80-830-01-04	Footswitch,Double,SWAP,bow,Pl.4 Pin,5m	I	1
80-830-02-04	Footswitch,Singel,Pl.3 Pin,5m	I	1
80-830-04-04	Footswitch,Double,SWAP,Pl.4 Pin,wireless	I	1
80-830-05-04	Mains adapter for 80-830-04-04	I	1
83-120-50-04	HF-CABLE FOR ME-MIC 5 M	I	1
83-120-51-04	MON. CONN.CABLE 3-PIN/MIS-INSTR. D=4MM	I	1
83-122-50-04	HF-CABLE, MON., INSTR. CONN. 4MM, ERBTOM	I	1
83-122-60-04	HF-CABLE, MON., INSTR. CONN. 4MM, ERBE	I	1
83-124-50-04	HF-CABLE, MON., INSTR. CONN. 4MM, BOVIE	I	1
83-124-52-04	CONN.CABLE 4M,W.BOVIE CONN.F.ISOLIT FCPS	I	1
83-126-51-04	ADAPTER FOR BIPO.LAR CONNECTING CABLE	I	1
80-227-01-04	Cable f. smartPen 80-227-00-04, 4m, M	I	1
80-227-02-04	Cable f. smartPen 80-227-00-04, 4m, E	I	1

EC Declaration of Conformity

Item designation: Electrosurgery Units and Accessories

Item number: see list of products 04_0404_V01 attached

Classification: see list of products attached
Class Is, IIa, IIb, Rule 1, 6, 9, 11
acc. to Annex IX to the Council Directive 93/42/EEC

We

Gebrüder Martin GmbH & Co. KG
KLS Martin Platz 1
78532 Tuttlingen
Germany

hereby declare on our sole responsibility that the medical devices specified above have been subjected to a conformity assessment procedure complying with Article 11 of the EC Council Directive 93/42/EEC.

The following assessment procedure has been used:

Annex II – excluding section 4 - to Council Directive 93/42/EEC of 14 June 1993 concerning medical devices with amending Directive 2007/47/EC.

Notified body: DQS Medizinprodukte GmbH,
August-Schanz-Straße 21, D-60433 Frankfurt (Germany)

ID number: 0297

Applied standards: DIN EN 60601-1 und EN 60601-2-2

Tuttlingen, 2021-05-04



Michael Martin
President



i.V. **Uwe Ott**
Director Product Management
Electrosurgery / Surgical Lasers

The present declaration of conformity is only valid together with the attached list of products as well as temporarily until 2024-05-26.

Attachment 04_0404_V01 to EC Declaration of Conformity

Item number	Item Designation	Classification: Class	Classification: Rule
80-006-02-04	MARTIN MD 62 220/240 V	I Ib	9
80-008-03-04	MINICUTTER 100-240 VOLT	I Ib	9
80-010-02-04	MARTIN ME 102 230 V	I Ib	9
80-040-11-04	ME MB 3 M VERSION, 220-240 V	I Ib	9
80-040-11-10	ME MB 3 M VERSION, 100-127 V	I Ib	9
80-040-12-04	ME MB 3 I VERSION, 220-240 V	I Ib	9
80-040-12-10	ME MB 3 I VERSION, 100-127 V	I Ib	9
80-042-00-04	MAXIUM WITH SOCKET MODULE MARTIN	I Ib	9
80-042-02-04	MAXIUM WITH SOCKET MODULE INTERNATIONAL	I Ib	9
80-042-04-04	MAXIUM WITH MODULE F.5MM INSTR.E-VERSION	I Ib	9
80-043-00-04	maxium smart C,MMB,M-modul,100-240V	I Ib	9
80-043-01-04	maxium smart C,MMB,I-modul,100-240V	I Ib	9
80-043-02-04	maxium smart C,MMB,E-modul,100-240V	I Ib	9
80-043-10-04	maxium smart Beam, Argon-unit	I Ib	9
80-044-00-04	MAXIUM BEAMER	I Ib	9
80-060-00-04	MARVAC SMOKE EVACUATION SYST. 220-240V	I Ia	11
80-060-00-10	MARVAC SMOKE EVACUATION SYST. 100-127V	I Ia	11
80-060-01-04	MAIN FILTER UNIT MARVAC	I Ia	11
80-060-03-04	HANDLE W.CLIP-ON F. SMOKE EVACUATOR	I Ib	9
80-060-05-04	EXTERNAL CURRENT DETECTION MARVAC	I Ia	11
80-061-00-04	MARVAC SMOKE EVAC.SYST.LAP-MODE 220-240V	I Ia	11
80-061-00-10	MARVAC SMOKE EVAC.SYST.LAP-MODE 100-127V	I Ia	11
80-062-00-04	maxium smart Vac, Lap-Mode, 220-240 V	I Ia	11
80-062-00-10	maxium smart Vac, Lap-Mode, 100-127 V	I Ia	11
80-062-01-04	maxium smart Vac, 220-240 V	I Ia	11
80-062-01-10	maxium smart Vac, 100-127 V	I Ia	11
80-181-02-04	MABS-HANDLE, TWO PUSH BUTTONS	I Ib	9
80-181-07-04	MABS-NEEDLE-ELECTRODE 40MM, ADJUSTABLE	I Ib	9
80-181-08-04	MABS-NEEDLE-ELECTRODE ADJUSTABLE	I Ib	9
80-181-10-04	MABS-BEAM ELECTRODE, DIAM. 5MM,WORK 25MM	I Ib	9
80-181-11-04	MABS-BEAM ELECTR. DIAM 5MM, WORK 100MM	I Ib	9
80-181-12-04	MABS-ELECTR. INCL.FIX.EQUIPM.D=5, WI=320	I Ib	9
80-181-13-04	MABS-LANCET-ELECTR. DIAM 5MM. WORK 25MM	I Ib	9
80-181-14-04	MABS-LANCET ELECTR. DIAM 5MM, WORK 115MM	I Ib	9
80-181-15-04	MABS-NEEDLE-ELECTR. DIAM 5MM, WORK 25MM	I Ib	9
80-181-16-04	MABS-NEEDLE ELECTR. DIAM 5MM, WORK 115MM	I Ib	9
80-181-23-04	MABS-GIT-PROBE REUSABLE 2.3MM/2.3M	I Ib	9
80-181-24-04	MABS-GIT-PROBE REUSABLE 3,2MM/2,3M	I Ib	9
80-181-25-04	MABS-TBS-PROBE DISPOSABLE 1,8MM/1,6M	I Ib	9
80-181-26-04	MABS-GIT-PROBE DISPOSABLE 1,8MM/3,2M	I Ib	9
80-181-27-04	MABS-GIT-PROBE DISPOSABLE 2,3MM/2,3M	I Ib	9
80-181-28-04	MABS-GIT-PROBE DISPOSABLE 3,2MM/2,3M	I Ib	9
80-181-29-04	MABS-GIT-PROBE DISPOSABLE 2,3MM/3,4M	I Ib	9
80-181-30-04	MABS CONNECTING CABLE 2,5M-PIN CONNECT.	I Ib	9
80-181-32-04	GIT-PROBE,SIDEFIRE,SINGLE USE 2,3MM,2,3M	I Ib	9
80-181-41-04	GIT-SNARE 15MM MULTIFIL .DISP.2,5MM/2,3M	I Ib	9
80-181-42-04	GIT-SNARE 30MM MULTIF. DISP.2,5MM/2,3M	I Ib	9
80-181-43-04	GIT-SNARE 15MM,MONOFIL.DISP.2,5MM/2,3M	I Ib	9
80-181-44-04	GIT-SNARE 30MM,MONOFIL.DISP.2,5MM/2,3M	I Ib	9
80-181-60-04	MABS-BEAM ELECTRODE, 320MM, BENDABLE	I Ib	9
80-181-62-04	MABS-BEAM ELECTRODE, 115MM, BENDABLE	I Ib	9
80-210-03-04	ELECTR. HDL., DBL.SW., 3PIN, Ø2.4MM, 3M	I Ia	6
80-210-12-04	EL.HANDLE W.2PUSHBUT.4,0MM,3PIN,CABLE 5M	I Ia	6
80-210-13-04	smartPen, 2 buttons, ø4mm, 4m, I	I Ia	6

Item number	Item Designation	Classification: Class	Classification: Rule
80-210-16-04	EL.HANDLE W.2PUSHBUT.2,4MM,3PIN,4M	Ila	6
80-210-18-04	smartPen, 2 buttons, ø4mm, 4m, E	Ila	6
80-210-21-04	smartPen, 2 buttons, ø2,4mm, 4m, I	Ila	6
80-210-23-04	smartPen, rockerswitch, ø2,4mm, 4m, I	Ila	6
80-214-00-04	ELECTRODE HDL., W/O SWITCH, 1,6 MM, 3M	Ila	6
80-214-01-04	D-ELECTR. HDL, 1SW, SMALL COAX, 1,6MM 3M	Ila	6
80-214-12-04	smartPen, 0 buttons, ø1,6mm, 4m, M	Ila	6
80-214-13-04	smartPen, 1 button, ø1,6mm, 4m, M	Ila	6
80-217-05-04	smartPen, 1 button, ø4mm, 4m, M	Ila	6
80-217-13-04	smartPen, 2 buttons, ø4mm, 4m, M	Ila	6
80-219-42-04	HANDLE SURGY-PEN, 2 SW., 3 PIN, 4MM,4M	Ila	6
80-220-02-04	smartPen, 0 buttons, ø4mm, 4m, M	Ila	6
80-220-31-04	smartPen, 0 buttons, ø4mm, 4m, E	Ila	6
80-220-41-04	smartPen, 0 buttons, ø4mm, 4m, Bovie	Ila	6
80-221-02-04	DISPOS. HANDLE, W. SPATULA, 2 SW, 3-PIN	Ilb	9
80-227-00-04	smartPen, 2 buttons, ø4mm	Ila	6
80-332-03-04	NEUTRAL EL. RUBBER 8X16CM, PL. 6,3MM,4M	Ilb	9
80-342-05-04	NEUTRAL EL. RUBBER, 8X16cm, I-PLUG, 4M	Ilb	9
80-342-06-04	TWIN-PAD NEUTRAL ELECTRODE	Ilb	9
80-342-07-04	Twin-Pad II Neutral Electrode	Ilb	9
80-344-09-04	PCS disposable neutral electrode	Ilb	9
80-344-12-04	PCS disposable neutral electrode, baby	Ilb	9
80-461-01-04	NEEDLE ELECTRODE STRAIGHT F1, 1,6MM	Ilb	9
80-461-02-04	NEEDLE ELECTRODE ANG 45DEG F2 1,6MM	Ilb	9
80-461-03-04	NEEDLE ELECTRODE ANG 120 DEG F3	Ilb	9
80-461-04-04	NEEDLE ELECTRODE 1PAIR RI/LE 1,6MM	Ilb	9
80-461-06-04	LOOP ELECTRODE FIG. 6	Ilb	9
80-461-07-04	DISH ELECTRODE.D5MM, SHAFT ANGLED 45°	Ilb	9
80-461-11-04	WIRE LOOP ELECTRODE 3MM F11	Ilb	9
80-461-12-04	WIRE LOOP ELECTRODE 5MM F12	Ilb	9
80-461-13-04	WIRE LOOP ELECTRODE 8MM F13	Ilb	9
80-461-14-04	WIRE LOOP ELECTRODE F14 1,6MM	Ilb	9
80-461-15-04	WIRE LOOP ELECTRODE 7X1,5 F15	Ilb	9
80-461-16-04	HOOK ELECTRODE,7MM,45DG.ANGL.FIG.16	Ilb	9
80-461-17-04	WIRE LOOP ELECTR 6X1,3MM F17	Ilb	9
80-461-18-04	WIRE LOOP ELECTR 7X1,7MM F18	Ilb	9
80-461-19-04	WIRE LOOP ELECTRODE FIG.19	Ilb	9
80-461-20-04	WIRE LOOP ELECTRODE 7X1,4MM 45° FIG 20	Ilb	9
80-461-21-04	WIRE LOOP ELECTRODE STR 7X1,7MM F21	Ilb	9
80-461-22-04	LOOP ELECTRODE ELONGATED 45ANGLED FIG.22	Ilb	9
80-461-23-04	Implantology electrode	Ilb	9
80-461-24-04	WIRE LOOP ELECTRODE 45DEG, FIG 24, 8X5MM	Ilb	9
80-461-31-04	COAGUL NEEDLE ELECTRODE F31	Ilb	9
80-461-32-04	NEEDLE ELECTRODE COAGULATING FIG.32	Ilb	9
80-461-33-04	BALL ELECTRODE 1,7MM F33	Ilb	9
80-461-34-04	ELECTRODE BALL 3,0MM FIG 34	Ilb	9
80-461-35-04	COAGULATION AND FULG. ELECTRODE, FIG.35	Ilb	9
80-461-36-04	COAG. AND FULG. ELECTRODE, FIG.36	Ilb	9
80-461-37-04	NEEDLE ELECTRODE 45° ANGLED	Ilb	9
80-462-01-04	NEEDLE ELECTRODE STRAIGHT SHORT 0,2 MM	Ilb	9
80-462-02-04	NEEDLE-ELECTRODE 45 GRAD FIG. 2 SHORT	Ilb	9
80-462-11-04	WIRE LOOP ELECTR., SHORT 3MM DIAM.FIG.11	Ilb	9
80-462-12-04	WIRE LOOP ELECTRODE SHORT 5MM DIAM.FIG12	Ilb	9
80-462-13-04	WIRE LOOP ELECTRODE SHORT 8MM DIAM.FIG13	Ilb	9

Item number	Item Designation	Classification: Class	Classification: Rule
80-463-01-04	NEEDLE ELECTR. STRAIGHT SHORT 0,3MM FIG1	IIb	9
80-464-02-04	NEEDLE ELECTRODE FIG. 2 FLEXIBLE WIRE	IIb	9
80-464-38-04	NEEDLE ELECTRODE FIG. 38 FLEXIBLE WIRE	IIb	9
80-466-01-04	NEEDLE ELECTRODE STRAIGHT SHORT 0,6 MM	IIb	9
80-505-00-04	CLEANING PAD FOR HF-ELECTRODES	Is	1
80-510-04-04	LANCET ELECTRODE, STRAIGHT, 25MM, 4MM	IIb	9
80-510-06-04	LANCET ELECTRODE SYN., STRAIGHT,25MM,4MM	IIb	9
80-510-08-04	LANCET ELECTRODE SYN,STRAIGHT,25MM,2.4MM	IIb	9
80-510-12-04	LANCET ELECTRODE, STR., L=100MM, WL=20MM	IIb	9
80-511-04-04	LANCET ELECTRODE ANGULAR, 25MM, 4MM	IIb	9
80-511-06-04	LANCET ELECTRODE, SYN, ANGLED, 23 MM,4MM	IIb	9
80-515-04-04	KNIFE ELECTRODE, STRAIGHT, 28MM, 4MM	IIb	9
80-515-06-04	KNIFE ELECTRODE, SYN, STR., 39 MM, 4MM	IIb	9
80-515-08-04	KNIFE ELECTRODE, STRAIGHT, 20MM, 2.4MM	IIb	9
80-515-12-04	KNIFE ELECTRODE L=100MM, WL=29MM, 4MM	IIb	9
80-515-14-04	KNIFE ELECTRODE, L=100MM, WL=12MM, 4MM	IIb	9
80-515-16-04	KNIFE EL., ANGL., L=100MM, WL=12MM, 4MM	IIb	9
80-516-04-04	MAMMARIA SPATULA, 37MM, 4MM	IIb	9
80-516-06-04	MAMMARIA SPATULA SYN, 39MM, 4MM	IIb	9
80-519-04-04	NEEDLE ELECTRODE, STR., 22MM, 4MM	IIb	9
80-520-04-04	NEEDLE ELECTRODE, STR.. 30MM, 4MM	IIb	9
80-520-06-04	NEEDLE ELECTRODE, SYN, STR., 30MM, 4MM	IIb	9
80-520-08-04	NEEDLE ELECTRODE, STR., 17MM, 2.4MM	IIb	9
80-520-09-04	NEEDLE ELECTR., MICRO, 2,4MM	IIb	9
80-520-10-04	NEEDLE ELECTR., MICRO, 2,4MM, STERILE	IIb	9
80-521-02-04	NEEDLE ELECTRODE, WL=23MM, 4MM	IIb	9
80-521-04-04	NEEDLE ELECTRODE, SYN, 10MM, 4MM	IIb	9
80-522-04-04	NEEDLE ELECTRODE, SYN, 6MM, 4MM	IIb	9
80-540-04-04	WIRE LOOP ELECTRODE, D=5MM, 4MM	IIb	9
80-540-12-04	WIRE LOOP ELECTRODE, L=10CM,D=5MM	IIb	9
80-542-04-04	WIRE LOOP ELECTRODE, D=10MM, 4MM	IIb	9
80-542-06-04	WIRE LOOP ELECTRODE SYN, D=10MM, 4MM	IIb	9
80-542-08-04	WIRE LOOP ELECTR. Ø 10 MM, F. 2.4 MM HDL	IIb	9
80-542-12-04	WIRE LOOP ELECTRODE, L=10CM, D=10MM	IIb	9
80-545-04-04	WIRE LOOP ELECTRODE D=20MM, 4MM	IIb	9
80-550-04-04	RIBBON LOOP ELECTRODE, D=10MM, 4MM	IIb	9
80-550-06-04	RIBBON LOOP ELECTRODE, SYN, D=10MM, 4MM	IIb	9
80-552-04-04	RIBBON LOOP ELECTRODE, D=15MM, 4MM	IIb	9
80-560-04-04	BALL ELECTRODE, D=2MM, 4MM	IIb	9
80-560-06-04	BALL ELECTRODE, SYN, WL=8MM, D=2MM, 4MM	IIb	9
80-562-04-04	BALL ELECTRODE, D=4MM, 4MM	IIb	9
80-562-06-04	BALL ELECTRODE, SYN, WL=8MM, D=4MM, 4MM	IIb	9
80-562-08-04	BALL ELECTRODE, D=4MM, 2,4MM	IIb	9
80-563-04-04	BALL ELECTRODE, D=5MM, 4MM	IIb	9
80-563-05-04	ELECTRODE FOR WRINKLE SMOOTHING, 4MM	IIb	9
80-570-04-04	PLATE ELECTRODE 8X10MM, 4MM	IIb	9
80-570-18-04	MARCUT BIPOL-SCISSORS, CVD., 18 CM	IIb	9
80-570-21-04	MARCUT BIPOL-SCISSORS, CVD., 21 CM	IIb	9
80-570-23-04	MARCUT BIPOL-SCISSORS, CVD., 23 CM	IIb	9
80-570-28-04	MARCUT BIPOL-SCISSORS, CVD., 28 CM	IIb	9
80-571-18-04	MARCUT BIPOL-SCISSORS, SLIM, CVD. 18 CM	IIb	9
80-571-21-04	MARCUT BIPOL-SCISSORS, SLIM, CVD. 21 CM	IIb	9
80-571-23-04	MARCUT BIPOL-SCISSORS, SLIM, CVD. 23 CM	IIb	9
80-571-28-04	MARCUT BIPOL-SCISSORS, SLIM, CVD. 28 CM	IIb	9

Item number	Item Designation	Classification: Class	Classification: Rule
80-572-04-04	PLATE ELECTRODE 10X10MM, 4MM	Iib	9
80-572-13-04	MARCUT BIPOL.SCISS.SUPER SLIM,CVD. 13 CM	Iib	9
80-572-14-04	MARCUT BIPOL.SCISS.SUPER SLIM,CVD. 14 CM	Iib	9
80-572-17-04	MARCUT BIPOL.SCISS.SUPER SLIM,CVD. 17 CM	Iib	9
80-574-04-04	ELECTRODE A PLAQUE 12X10MM 4mm	Iib	9
80-580-06-04	ELECTRODE SET SYN, 4MM	Iib	9
80-610-10-04	NEEDLE EL., ANGUL., L=100MM, AL=2MM, 4MM	Iib	9
80-612-10-04	BALL ELECTRODE ANGUL, L=100MM, D=2MM,4MM	Iib	9
80-630-12-04	Tubular shaft incl.bladeholder, 200MM	Iib	9
80-630-15-04	Blade for marseal	Ila	6
80-630-16-04	Blade for marSeal, sterile	Ila	6
80-630-34-04	Tubular shaft ms slim incl. blade rod, 3	Iib	9
80-630-35-04	Tubuar shaft ms slim incl. blade rod, 20	Iib	9
80-630-41-04	MARSEAL IQ CPL.W.INSTRUMENT-CODING,200MM	Iib	9
80-630-42-04	MARSEAL SLIM IQ CPL.INSTRUM.CODING 370MM	Iib	9
80-630-43-04	MARSEAL SLIM IQ CPL.INSTRUM.CODING 200MM	Iib	9
80-630-45-04	Handle for marseal IQ, cable 4M	Iib	9
80-630-50-04	MarSeal 5 IQ cpl.w. Instr. Cod. 370MM	Iib	9
80-630-51-04	Tubular shaft for marseal 5, 370MM	Iib	9
80-630-52-04	Handle for marseal 5 with connector IQ	Iib	9
80-630-53-04	Blade rod for marseal 5	Ila	6
80-630-56-04	Handle for marseal 5 w. connector Martin	Iib	9
80-630-83-04	Blade insert marSeal 5,370mm,sterile	Ila	6
80-630-90-04	marSeal 5 IQ short comp.instrum-cod200mm	Iib	9
80-630-91-04	Blade insert f.marSeal 5 IQ short, 200mm	Ila	6
80-630-92-04	Tubular shaft for marseal 5 IQ short, 20	Iib	9
80-632-00-04	Blade for marClamp CUT IQ, sterile,18cm	Ila	6
80-632-18-04	marClamp CUT IQ w.instrum.coding,18cm	Iib	9
80-633-00-04	marSeal5plus VS.,bi.,IQ.,Ø5mm,37CM	Iib	9
80-633-01-04	marSeal5plus Maryland.,bi.,IQ.,Ø5mm,45cm	Iib	9
80-633-02-04	marSeal5plus Maryland.,bi.,IQ.,Ø5mm,37cm	Iib	9
80-633-03-04	marSeal5plus Maryland.,bi.,IQ.,Ø5mm,23cm	Iib	9
80-633-04-04	marSeal5plus handle,bi.,IQ.,Ø5mm	Iib	9
80-633-05-04	marSeal5plus tubular shaft,bi.,Ø5mm,37cm	Iib	9
80-633-06-04	marSeal5plus tub.shaft, Maryl.,Ø5mm,45cm	Iib	9
80-633-07-04	marSeal5plus tub.shaft, Maryl.,Ø5mm,37cm	Iib	9
80-633-08-04	marSeal5plus tub.shaft, Maryl.,Ø5mm,23cm	Iib	9
80-633-09-04	marSeal5plus blade insert,37cm,sterile	Ila	6
80-633-10-04	marSeal5plus blade insert,23cm,sterile	Ila	6
80-633-11-04	marSeal5plus blade insert,37cm	Ila	6
80-633-14-04	marSeal5plus blade insert,23cm	Ila	6
80-633-15-04	marSeal5plus blade insert,45cm,sterile	Ila	6
80-633-16-04	marSeal5plus blade insert,45cm	Ila	6
80-651-00-04	BIPOLAR HOOK ELECTRODE, L=115MM	Iib	9
80-652-00-04	BIPOLAR ARTHR. ELECTR. "PHAZER"	Iib	9
80-674-12-04	BALL ELECTRODE, D=5MM, L=10CM, 4MM	Iib	9
80-674-13-04	BALL ELECTRODE, D=3MM, L=10CM, 4MM	Iib	9
80-675-13-04	NEEDLE ELECTR., L=10CM, AL=4MM, 4MM	Iib	9
80-676-13-04	BALL ELECTRODE, L=13CM D=3MM, 4MM	Iib	9
80-677-12-04	NEEDLE ELECTRODE, L=10CM, WL=15,5MM, 4MM	Iib	9
80-678-10-04	KNIFE ELECTR.F.2,4MM HANDLES,SHAFT 9CM	Iib	9
80-678-11-04	BALL ELECTRODE, L=9CM, D=3MM, 2,4MM	Iib	9
80-680-12-04	CONIZATION ELECTRODE, L=12CM, D=10MM,4MM	Iib	9
80-681-12-04	CONISATION ELECTRODE, LOOP DIAM. 15 MM	Iib	9

Item number	Item Designation	Classification: Class	Classification: Rule
80-682-12-04	CONIZATION ELECTRODE, L=12CM, D=20MM,4MM	IIb	9
80-683-12-04	CONISATION ELECTRODE, LOOP DIAM 25 MM	IIb	9
80-684-12-04	SCARFI CONIZAT.ELEC.,L=11,5CM, D=2CM,4MM	IIb	9
80-685-12-04	SCARFI CONIZAT.ELEC.,L=11,5CM, D=3CM,4MM	IIb	9
80-686-12-04	SCARFI CONIZAT.ELEC.,L=11,5CM, D=4CM,4MM	IIb	9
80-690-12-04	NEEDLE ELECTRODE ARTHR., L=11,5CM, 1,5MM	IIb	9
80-691-12-04	NEEDLE ELECTRODE, ARHTR., L=11,5CM, 4MM	IIb	9
80-692-12-04	NEEDLE ELECTRODE, ARHTR., L=11,5CM, 2MM	IIb	9
80-693-12-04	KNIFE ELECTRODE ARTHR., L=11,5CM, 4MM	IIb	9
80-694-12-04	PALPATION ELECTR., ARTHR., L=11,5CM, 4MM	IIb	9
80-695-12-04	BALL ELECTR. ARTHROSCOPY,L=11,5CM, D=3MM	IIb	9
80-900-18-03	DRESS. FORCEPS, ISOL., W/O CONN., 18 CM	IIb	9
80-900-21-03	DRESS. FORCEPS, ISOL., W/O CONN., 21 CM	IIb	9
80-900-25-03	DRESS. FORCEPS, ISOL., W/O CONN., 25 CM	IIb	9
80-901-18-03	FORCEPS, CHIR., 1X2 T., ISOL., 18CM	IIb	9
80-901-21-03	FORCEPS, CHIR., 1X2 T., ISOL., 21CM	IIb	9
80-901-25-03	FORCEPS, CHIR., 1X2 T., ISOL., 25CM	IIb	9
80-902-18-03	DRESSING FORCEPS, ISOL., W. CONN., 18 CM	IIb	9
80-902-21-03	DRESSING FORCEPS, ISOL., W. CONN., 21 CM	IIb	9
80-902-25-03	DRESSING FORCEPS, ISOL., W. CONN., 25 CM	IIb	9
80-910-07-04	BIPOLAR FCPS., STR., SH., 0.3 MM, 8.5 CM	IIb	9
80-910-12-04	BIPOLAR FCPS., STR., SH., 0.3 MM, 12 CM	IIb	9
80-910-16-04	BIPOLAR FCPS., STR., SH., 0.3 MM, 16 CM	IIb	9
80-910-18-04	BIPOLAR FCPS., STR., SH., 0.3 MM, 18 CM	IIb	9
80-910-20-04	BIPOLAR FCPS., STR., SH., 0.3 MM, 20 CM	IIb	9
80-910-22-04	BIPOLAR FCPS., STR., SH., 0.3 MM, 22 CM	IIb	9
80-911-07-04	BIPOLAR FCPS., ANG., SH., 0.3 MM, 8,5 CM	IIb	9
80-911-12-04	BIPOLAR FCPS., ANG., SH., 0.3 MM, 12 CM	IIb	9
80-911-16-04	BIPOLAR FCPS., ANG., SH., 0.3 MM, 16 CM	IIb	9
80-911-18-04	BIPOLAR FCPS., ANG., SH., 0.3 MM, 18 CM	IIb	9
80-911-20-04	BIPOLAR FCPS., ANG., SH., 0.3 MM, 20 CM	IIb	9
80-924-12-04	BIPOLAR FCPS., STR., BL., 1.0 MM, 12 CM	IIb	9
80-924-16-04	BIPOLAR FCPS., STR., BL., 1.2 MM, 16 CM	IIb	9
80-924-18-04	BIPOLAR FCPS., STR., BL., 1.2 MM, 18 CM	IIb	9
80-924-20-04	BIPOLAR FCPS., STR., BL., 1.2 MM, 20 CM	IIb	9
80-924-22-04	BIPOLAR FCPS., STR., BL., 1.2 MM, 22 CM	IIb	9
80-924-24-04	BIPOLAR FCPS., STR., BL., 1.2 MM, 24 CM	IIb	9
80-924-26-04	BIPOLAR FCPS., STR., BL., 1.2 MM, 26 CM	IIb	9
80-924-30-04	BIPOLAR FCPS., STR., BL., 1.2 MM, 30 CM	IIb	9
80-925-12-04	BIPOLAR FCPS., ANG., BL., 1.0 MM, 12 CM	IIb	9
80-925-16-04	BIPOLAR FCPS., ANG., BL., 1.2 MM, 16 CM	IIb	9
80-925-18-04	BIPOLAR FCPS., ANG., BL., 1.2 MM, 18 CM	IIb	9
80-925-20-04	BIPOLAR FCPS., ANG., BL., 1.2 MM, 20 CM	IIb	9
80-925-22-04	BIPOLAR FCPS., ANG., BL., 1.2 MM, 22 CM	IIb	9
80-931-16-04	BIPOLAR FCPS., BAY., SH., 0.3 MM, 16 CM	IIb	9
80-931-18-04	BIPOLAR FCPS., BAY., SH., 0.3 MM, 18 CM	IIb	9
80-931-20-04	BIPOLAR FCPS., BAY., SH., 0.3 MM, 20 CM	IIb	9
80-931-24-04	BIPOLAR FCPS., BAY., SH., 0.3 MM, 24 CM	IIb	9
80-934-12-04	BIPOLAR FCPS., STR., BL., 2.0 MM, 12 CM	IIb	9
80-934-16-04	BIPOLAR FCPS., STR., BL., 2.0 MM, 16 CM	IIb	9
80-934-18-04	BIPOLAR FCPS., STR., BL., 2.0 MM, 18 CM	IIb	9
80-934-20-04	BIPOLAR FCPS., STR., BL., 2.0 MM, 20 CM	IIb	9
80-934-22-04	BIPOLAR FCPS., STR., BL., 2.0 MM, 22 CM	IIb	9
80-934-24-04	BIPOLAR FCPS., STR., BL., 2.0 MM, 24 CM	IIb	9

Item number	Item Designation	Classification: Class	Classification: Rule
80-934-26-04	BIPOLAR FCPS., STR., BL., 2.0 MM, 26 CM	IIb	9
80-934-30-04	BIPOLAR FCPS., STR., BL., 2.0 MM, 30 CM	IIb	9
80-935-16-04	BIPOLAR FCPS., ANG., BL., 2.0 MM, 16 CM	IIb	9
80-935-18-04	BIPOLAR FCPS., ANG., BL., 2.0 MM, 18 CM	IIb	9
80-935-20-04	BIPOLAR FCPS., ANG., BL., 2.0 MM, 20 CM	IIb	9
80-935-22-04	BIPOLAR FCPS., ANG., BL., 2.0 MM, 22 CM	IIb	9
80-935-24-04	BIPOLAR FCPS., ANG., BL., 2.0 MM, 24 CM	IIb	9
80-945-16-04	BIPOLAR FCPS., BAY., BL., 1.2 MM, 16 CM	IIb	9
80-945-18-04	BIPOLAR FCPS., BAY., BL., 1.2 MM, 18 CM	IIb	9
80-945-20-04	BIPOLAR FCPS., BAY., BL., 1.2 MM, 20 CM	IIb	9
80-945-24-04	BIPOLAR FCPS., BAY., BL., 1.2 MM, 24 CM	IIb	9
80-948-18-04	BIPOLAR FCPS., BAY., BL., 2.0 MM, 18 CM	IIb	9
80-948-20-04	BIPOLAR FCPS., BAY., BL., 2.0 MM, 20 CM	IIb	9
80-948-24-04	BIPOLAR FCPS., BAY., BL., 2.0 MM, 24 CM	IIb	9
80-948-30-04	BIPOLAR FCPS., BAY., BL., 2.0 MM, 30 CM	IIb	9
80-950-20-04	BIP. FCPS., NEURO , STR., 0.5 MM, 20 CM	IIb	9
80-951-20-04	BIP. FCPS., NEURO , ANG., 0.5 MM, 20 CM	IIb	9
80-975-16-04	MARCLAMP, IQ, 16CM, CABLE 4M	IIb	9
80-975-18-04	MARCLAMP, IQ, 18CM, CABLE 4M	IIb	9
80-975-23-04	MARCLAMP, IQ, 23CM, CABLE 4M	IIb	9
80-975-28-04	MARCLAMP, IQ, 28CM, CABLE 4M	IIb	9
80-976-23-04	MARCLAMP SHARK, IQ, 23 CM, CABLE 4M	IIb	9
80-977-23-04	MARCLAMP URO, ACC. TO KALEM, IQ,CABLE 4M	IIb	9
80-978-23-04	MARCLAMP IQ, GEMINI, 23 CM	IIb	9
80-981-01-04	NST-FLUSH-FCPS., BAJ.,STR.,0,5 MM, 20 CM	IIb	9
80-981-02-04	NST-FLUSH-FCPS., BAJ.,STR.,1,0 MM, 20 CM	IIb	9
80-981-03-04	NST-FLUSH-FCPS., BAJ.,STR.,0,5 MM, 23 CM	IIb	9
80-981-04-04	NST-FLUSH-FCPS., BAJ.,STR.,1,0 MM, 23 CM	IIb	9
80-981-05-04	NST-FLUSH-FCPS., STR.,1,5 MM, 20 CM	IIb	9
80-981-06-04	NST-FLUSH-FCPS., STR.,2,0 MM, 23 CM	IIb	9
80-981-08-04	NST-FLUSH-FCPS.,STR., 2,0 MM, 30 CM	IIb	9
80-982-12-04	NST-RED-FCPS., STR., SH. 0,3 MM, 12 CM	IIb	9
80-982-17-04	NST-RED-FCPS., STR., SH. 0,3 MM, 17 CM	IIb	9
80-982-20-04	NST-RED-FCPS., STR., SH. 0,3 MM, 20 CM	IIb	9
80-983-12-04	NST-RED-FCPS., ANG., SH. 0,3 MM, 12 CM	IIb	9
80-983-17-04	NST-RED-FCPS., ANG., SH. 0,3 MM, 17 CM	IIb	9
80-984-12-04	NST-RED-FCPS., STR., BL. 0,6 MM, 12 CM	IIb	9
80-984-17-04	NST-RED-FCPS., STR., BL. 0,6 MM, 17 CM	IIb	9
80-984-20-04	NST-RED-FCPS., STR., BL. 0,6 MM, 20 CM	IIb	9
80-985-12-04	NST-RED-FCPS., ANG., BL. 0,6 MM, 12 CM	IIb	9
80-985-17-04	NST-RED-FCPS., ANG., BL. 0,6 MM, 17 CM	IIb	9
80-985-20-04	NST-RED-FCPS., ANG., BL. 0,6 MM, 20 CM	IIb	9
80-986-12-04	NST-RED-FCPS., STR., BL. 1,0 MM, 12 CM	IIb	9
80-986-17-04	NST-RED-FCPS., STR., BL. 1,0 MM, 17 CM	IIb	9
80-986-20-04	NST-RED-FCPS., STR., BL. 1,0 MM, 20 CM	IIb	9
80-986-23-04	NST-RED-FCPS., STR., BL. 1,0 MM, 23 CM	IIb	9
80-987-12-04	NST-RED-FCPS., ANG., BL. 1,0 MM, 12 CM	IIb	9
80-987-17-04	NST-RED-FCPS., ANG., BL. 1,0 MM, 17 CM	IIb	9
80-987-20-04	NST-RED-FCPS., ANG., BL. 1,0 MM, 20 CM	IIb	9
80-987-23-04	NST-RED-FCPS., ANG., BL. 1,0 MM, 23 CM	IIb	9
80-988-17-04	NST-RED-FCPS., STR., BL. 2,0 MM, 17 CM	IIb	9
80-988-20-04	NST-RED-FCPS., STR., BL. 2,0 MM, 20 CM	IIb	9
80-988-23-04	NST-RED-FCPS., STR., BL. 2,0 MM, 23 CM	IIb	9
80-988-30-04	NST-RED-FCPS., STR., BL. 2,0 MM, 30 CM	IIb	9

Attachment 04_0404_V01 to EC Declaration of Conformity

Item number	Item Designation	Classification: Class	Classification: Rule
80-989-17-04	NST-RED-FCPS., ANG., BL. 2,0 MM, 17 CM	IIb	9
80-989-20-04	NST-RED-FCPS., ANG., BL. 2,0 MM, 20 CM	IIb	9
80-989-23-04	NST-RED-FCPS., ANG., BL. 2,0 MM, 23 CM	IIb	9
80-989-25-04	NST-RED-FCPS., ANG., BL. 2,0 MM, 25 CM	IIb	9
80-989-28-04	NST-RED-FCPS., ANG., BL. 2,0 MM, 28 CM	IIb	9
80-989-30-04	NST-RED-FCPS., ANG., BL. 2,0 MM, 30 CM	IIb	9
80-990-17-04	NST-RED-FCPS., BAY., STR., 0,3 MM, 17 CM	IIb	9
80-990-20-04	NST-RED-FCPS., BAY., STR., 0,3 MM, 20 CM	IIb	9
80-990-23-04	NST-RED-FCPS., BAY., STR., 0,3 MM, 23 CM	IIb	9
80-990-25-04	NST-RED-FCPS., BAY., STR., 0,3 MM, 25 CM	IIb	9
80-991-17-04	NST-RED-FCPS., BAY., STR., 0,6 MM, 17 CM	IIb	9
80-991-20-04	NST-RED-FCPS., BAY., STR., 0,6 MM, 20 CM	IIb	9
80-991-23-04	NST-RED-FCPS., BAY., STR., 0,6 MM, 23 CM	IIb	9
80-991-25-04	NST-RED-FCPS., BAY., STR., 0,6 MM, 25 CM	IIb	9
80-992-17-04	NST-RED-FCPS., BAY., STR., 1,0 MM, 17 CM	IIb	9
80-992-20-04	NST-RED-FCPS., BAY., STR., 1,0 MM, 20 CM	IIb	9
80-992-23-04	NST-RED-FCPS., BAY., STR., 1,0 MM, 23 CM	IIb	9
80-992-25-04	NST-RED-FCPS., BAY., STR., 1,0 MM, 25 CM	IIb	9
80-993-17-04	NST-RED-FCPS., BAY., STR., 2,0 MM, 17 CM	IIb	9
80-993-20-04	NST-RED-FCPS., BAY., STR., 2,0 MM, 20 CM	IIb	9
80-993-23-04	NST-RED-FCPS., BAY., STR., 2,0 MM, 23 CM	IIb	9
80-993-25-04	NST-RED-FCPS., BAY., STR., 2,0 MM, 25 CM	IIb	9
80-994-20-04	NST-RED-FCPS. BAY. DOWNW.-B. 1,0 MM20cm	IIb	9
80-994-23-04	NST-RED-FCPS. BAY. DOWNW.-B. 1,0 MM 23cm	IIb	9
80-994-25-04	NST-RED-FCPS.BAY.DOWNW.-B.1,0MM25cm	IIb	9
80-995-20-04	NST-RED-FCPS., BAY., UPW.-B.,1,0MM, 20CM	IIb	9
80-995-23-04	NST-RED-FCPS., BAY., UPW.-B.,1,0MM, 23CM	IIb	9
80-996-23-04	NST-RED-FCPS., BAY., UPW.-B., 0,6 MM, 23	IIb	9
80-997-23-04	NST-RED-FCPS., BAY., DOWNW.-B., 0,6 MM,	IIb	9
80-997-25-04	NST-RED-FCPS., BAY., DOWNW.-B., 0,6 MM,	IIb	9
80-998-23-04	NST-RED-FCPS., CVD., STR., 0,5 MM, 23 CM	IIb	9
80-998-24-04	NST-RED-FCPS., ACC. MEUSER, 2MM, 18CM	IIb	9
80-999-23-04	NST-RED-FCPS., CVD., UPW.-B.,0,5 MM,23CM	IIb	9
80-999-24-04	NST-RED-FCPS., CVD.,DOWNW.-B.,0,5MM,23CM	IIb	9
83-520-39-04	Hook Electrode, mono, D=5mm,AL=470mm	IIb	9
83-525-30-04	smartLap electrode, mo.,ø5mm, L-hook	IIb	9
83-525-31-04	smartLap electrode, mo.,ø5mm, J-hook	IIb	9
83-525-32-04	smartLap electrode, mo.,ø5mm, needle	IIb	9
83-585-00-04	MARLAP HANDLE WITH SHAFT	IIb	9
83-585-01-04	MARLAP HANDLE	IIb	9
83-585-02-04	MARLAP SHAFT	IIb	9
83-585-03-04	MARLAP CUT, EXCHANGE. SCISSORS ELETRODE	IIb	9
83-585-05-04	MARLAP CLAMP,EXCH. FORC. ELEKTR.FENESTR.	IIb	9
83-585-06-04	MARLAP MARYLAND,EXCH.FORC.ELECTRODE,DVD	IIb	9
83-585-07-04	MARLAP CLAMP ELECTR.NON FENESTR.SMOOTH	IIb	9



CERTIFICATE



This is to certify that

KLS martin
GROUP

Gebrüder Martin GmbH & Co. KG

KLS Martin Platz 1
78532 Tuttlingen
Germany

has implemented and maintains a **Quality Management System**.

Scope:

Development, manufacturing and distribution of medical products, surgical instruments and devices, non-active implants, RF surgery units, operation theatre light systems, ceiling-mounted surgery stands, surgical laser devices and container systems for sterilization and accessories for the above mentioned products.

Through an audit, documented in a report, it was verified that the management system fulfills the requirements of the following standard:

ISO 9001 : 2015

Certificate registration no.	210299 QM15
Certificate unique ID	170738717
Effective date	2020-07-29
Expiry date	2023-07-28
Frankfurt am Main	2020-07-29



DQS Medizinprodukte GmbH

Sigrid Uhlemann
Managing Director

August-Schanz-Straße 21, 60433 Frankfurt am Main,
Tel. +49 (0) 69 95427-300, medical.devices@dqs-med.de



CERTIFICATE



This is to certify that the company

KLS martin
GROUP

Gebrüder Martin GmbH & Co. KG

KLS Martin Platz 1
78532 Tuttlingen
Germany

has implemented and maintains a **Quality Management System**.

Scope:

Development, manufacturing and distribution of medical products, surgical instruments and devices, non-active implants, RF surgery units, operation theatre light supply units, ceiling-mounted supply systems, surgical laser devices and container systems for sterilization and accessories for the above mentioned products.

Through an audit, documented in a report, performed by DQS Medizinprodukte GmbH, it was verified that the management system fulfills the requirements of the following standard:

EN ISO 13485 : 2016

Certificate registration no.	210299 MP2016
Certificate unique ID	170738702
Effective date	2019-08-29
Expiry date	2022-08-28
Frankfurt am Main	2020-03-06



DQS Medizinprodukte GmbH

Sigrid Uhlemann
Managing Director

Dr. Thomas Feldmann
Head of Certification Body

August-Schanz-Straße 21, 60433 Frankfurt am Main,
Tel. +49 (0) 69 95427-300, medical.devices@dqs-med.de



EC-CERTIFICATE

(Full quality assurance system)



This is to certify that the company

KLS martin
GROUP

Gebrüder Martin GmbH & Co. KG

KLS Martin Platz 1
78532 Tuttlingen
Germany

has implemented and maintains a full quality assurance system which applies to the products at every stage from design to final controls.

Through an audit, documented in a report, performed by DQS Medizinprodukte GmbH, it was verified that the management system fulfills the requirements of

Annex II – excluding Section 4 of Council Directive 93/42/EEC concerning medical devices

with respect to the following medical devices:

Active and non active medical devices, surgical instruments and units, implants, medical devices for RF- and laser surgery, Smoke evacuation systems, Accessories for Smoke evacuation systems, ceiling-mounted supply systems and accessories according to annex.

The manufacturer is subject to surveillance according to Annex II, Section 5. The CE marking with the Notified Body Identification Number (0297) may be affixed on the devices listed in the certificate. An EC Design Examination Certificate according to Annex II, Section 4 is required for class III devices covered by this certificate. The certificate is in the case of class I(s) devices (I(s) = class I products placed on the market in sterile conditions) limited to the aspects of manufacture concerned with securing and maintaining sterile conditions. The certificate is in the case of class I(m) devices (I(m) = class I devices with a measuring function) limited to the aspects of manufacture concerned with the conformity of the products with the metrological requirements.

Certificate registration no.	210299 MR2
Certificate unique ID	170763177
Effective date	2020-01-13
Expiry date	2024-05-26
Frankfurt am Main	2020-01-13

DQS Medizinprodukte GmbH

Sigrid Uhlemann
Managing Director

Dr. Thomas Feldmann
Head of Certification Body

August-Schanz-Straße 21, 60433 Frankfurt am Main,
Tel. +49 (0) 69 95427-300, medical.devices@dqs-med.de

DQS Medizinprodukte GmbH is a Notified Body according to Council Directive 93/42/EEC concerning medical devices with the Identification Number 0297.



Annex to certificate
Certificate registration No.: 210299 MR2
Certificate unique ID: 170763177
Effective date: 2020-01-13



Gebrüder Martin GmbH & Co. KG

KLS Martin Platz 1
78532 Tuttlingen
Germany

Device family	Devices	Class
RF-surgery units	Medical RF-surgery units for general and special applications Argon Beamer	IIb
Accessories for RF-surgery units	Handles for RF-surgery Electrodes Forceps and scissors Clamps, forceps, NervScout	IIa / IIb
Laser surgery units	surgical laser units for common and particular use	IIb
Accessories for laser surgery units	Laser contact probe Adapter for laser fibres Connection fibres Fibre optics Bipolar suction and irrigation units Micromanipulator	IIa / IIb
Smoke evacuation systems	products for smoke evacuation	IIa
Accessories for Smoke evacuation systems	adapters	IIa
Implants and Instruments	Distractor Trocar tip for activation arm Condylar implant Washers Meshes (for cranioplasty) Bone plates Bone screws Bone nails Fixation screws Fixation screws (lug) UHP (prosthesis for wrist joint) Tantal wire (orthodontic) Bone clips Bone wire Finger joint CranioXpand marPOR Polyethylene Implants	IIa / IIb



Annex to certificate
Certificate registration No.: 210299 MR2
Certificate unique ID: 170763177
Effective date: 2020-01-13



Gebrüder Martin GmbH & Co. KG

KLS Martin Platz 1
78532 Tuttlingen
Germany

Device Family	Device	Class
Resorbable Implants	Resorb X meshes Resorb X plates Resorb X screws Resorb X Pins	III
Surgical instruments and units	Sterile scalpels Sterile blades Guide pins Guide wires	Ila Ila Iib Iib
	Drill bits OMF surgery BOS driver SonicWeld Rx (basis device, handpieces) SonicWeld Rx (sonotrodes) Drill bits / Saw blades orthopaedic BOS-Battery pack sterile Bending Templates	Ila Ila Ila Ila Ila Is Is
Pendants	Service Head	Iib
Wound spreading systems	marTract	Ila
Surgical Instruments and units	Suction Units, Suction Cannulae, Irrigation Cannulae	Ila



EC-CERTIFICATE

(Full quality assurance system)



This is to certify that the company

KLS martin
GROUP

KLS Martin GmbH + Co. KG

Am Flughafen 18
79108 Freiburg
Germany

has implemented and maintains a full quality assurance system which applies to the products at every stage from design to final controls.

Through an audit, documented in a report, performed by DQS Medizinprodukte GmbH, it was verified that the management system fulfills the requirements of

Annex II – excluding Section 4 of Council Directive 93/42/EEC concerning medical devices

with respect to the following medical devices:

Medical RF-, Laser units for surgery, Smoke evacuation systems and accessories, sterile or non sterile according to annex

The manufacturer is subject to surveillance according to Annex II, Section 5. The CE marking with the Notified Body Identification Number (0297) may be affixed on the devices listed in the certificate. An EC Design Examination Certificate according to Annex II, Section 4 is required for class III devices covered by this certificate. The certificate is in the case of class I(s) devices (I(s) = class I products placed on the market in sterile conditions) limited to the aspects of manufacture concerned with securing and maintaining sterile conditions. The certificate is in the case of class I(m) devices (I(m) = class I devices with a measuring function) limited to the aspects of manufacture concerned with the conformity of the products with the metrological requirements.

Certificate registration no.	247860 MR2
Certificate unique ID	170672849
Effective date	2017-05-13
Expiry date	2022-05-12
Frankfurt am Main	2017-05-13

DQS Medizinprodukte GmbH

Sigrid Uhlemann
Managing Director

Dr. Thomas Feldmann
Head of Certification Body

August-Schanz-Straße 21, 60433 Frankfurt am Main,
Tel. +49 (0) 69 95427-300, medical.devices@dqs-med.de

DQS Medizinprodukte GmbH is a Notified Body according to Council Directive 93/42/EEC concerning medical devices with the Identification Number 0297.



Annex to Certificate
Certificate registration No.: 247860 MR2
Certificate unique ID: 170672849
Effective date: 2017-05-13



KLS Martin GmbH + Co. KG

Am Flughafen 18
79108 Freiburg
Germany

Device family	Device	Class
RF surgery units	Medical RF surgery units for general and particular use; Argon-Beamer	IIb
Accessories for RF surgery	Devices for RF surgery: electrodes, tweezers, scissors, clamps, forceps, NervScout	IIa / IIb
Smoke evacuation systems	Products for smoke evacuation	IIa
Accessories for smoke evacuation systems	adapters	IIa
Laser surgery units	surgical laser units for common and particular use	IIb
Accessories for laser surgery	Fibers, sterile or non sterile Fiber adapters Catheter supply kits with accessories suction and irrigation pumps with accessories	IIa / IIb