



**FRESENIUS  
KABI**

caring for life



# CompoDock<sup>®</sup>

## Sterile connection of PVC tubing

Patented waferless technology for a sterile connection of medical PVC tubes in a fully closed system.

Waferless technology

Significantly reduced odour compared to systems using wafers

Quick and easy handling

Fully closed system



CompoDock is a unique system that has a permanent heating element.

This innovation does not require the use of wafers, providing a number of benefits for environmental, health and safety practices.

#### Quick and easy handling

- No wafer loading necessary
- Quick loading time - system loading takes place in just two simple steps
- Designed to prevent tube mix up
- No contaminated wafers to be disposed

#### Fully closed system - reduced odour and exhaust

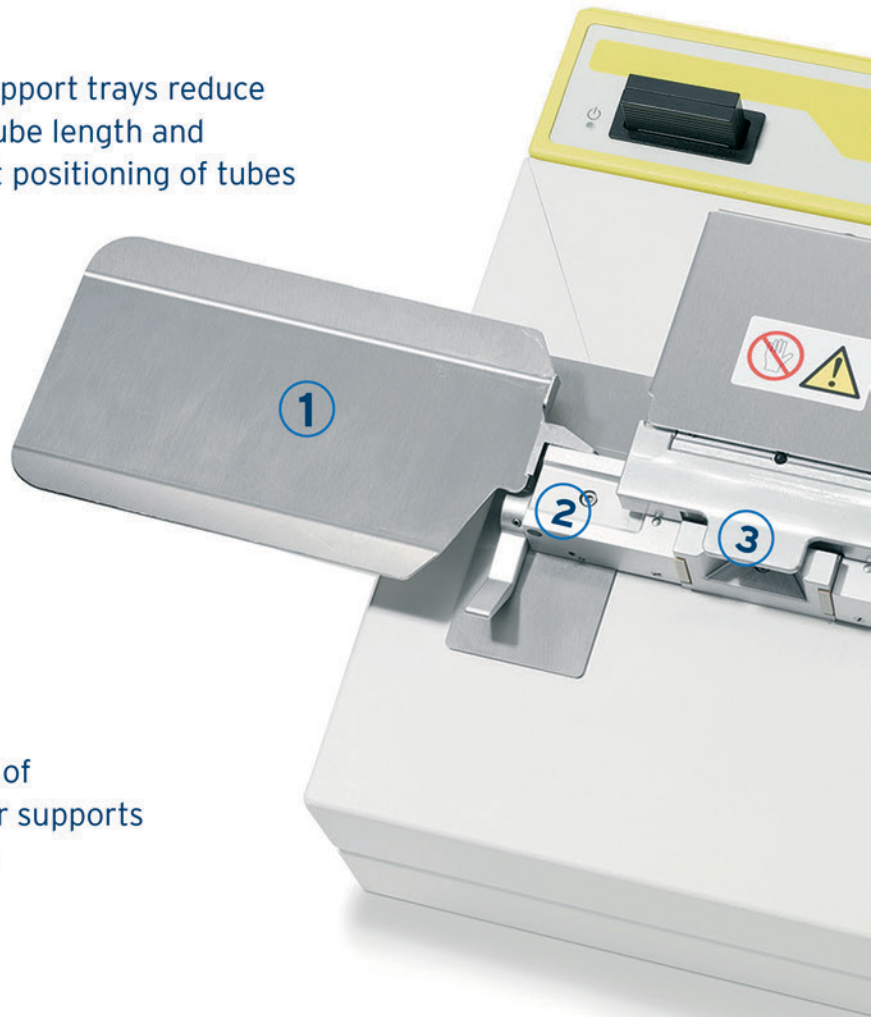
- No risk of contamination - the element heats the sealed tube ends without touching them
- Tube ends of the docked tube remain sealed until the dock is completed and the waste tube ends remain closed for disposal
- Smell and exhaust caused by burned PVC material is significantly reduced compared to systems using wafers

# Unique waferless technology

**1** Moving bag support trays reduce the required tube length and ensure correct positioning of tubes

**2** Clamps to assure optimal tube alignment

**3** The construction of the position cover supports fail safe handling



CompoDock Counter  
(Counter with 500, 1000  
and 2500 docks available)



Highly efficient pooling by "chain" method: Docking of a pool of  
four buffy coats and one plasma in less than 1:20 minute  
(Ask for our promotion film)



CompoDock with two  
for data management

# Fully closed system

## Field of application

- Pooling of buffy coats and/or platelet concentrates
- Sterile docking of filters
- Sterile docking of platelet additive solution
- Paediatric use
- Virus inactivation procedures
- Sampling
- Modifying apheresis sets
- Sterile docking of washing solutions

## Tube compatibility and processing time

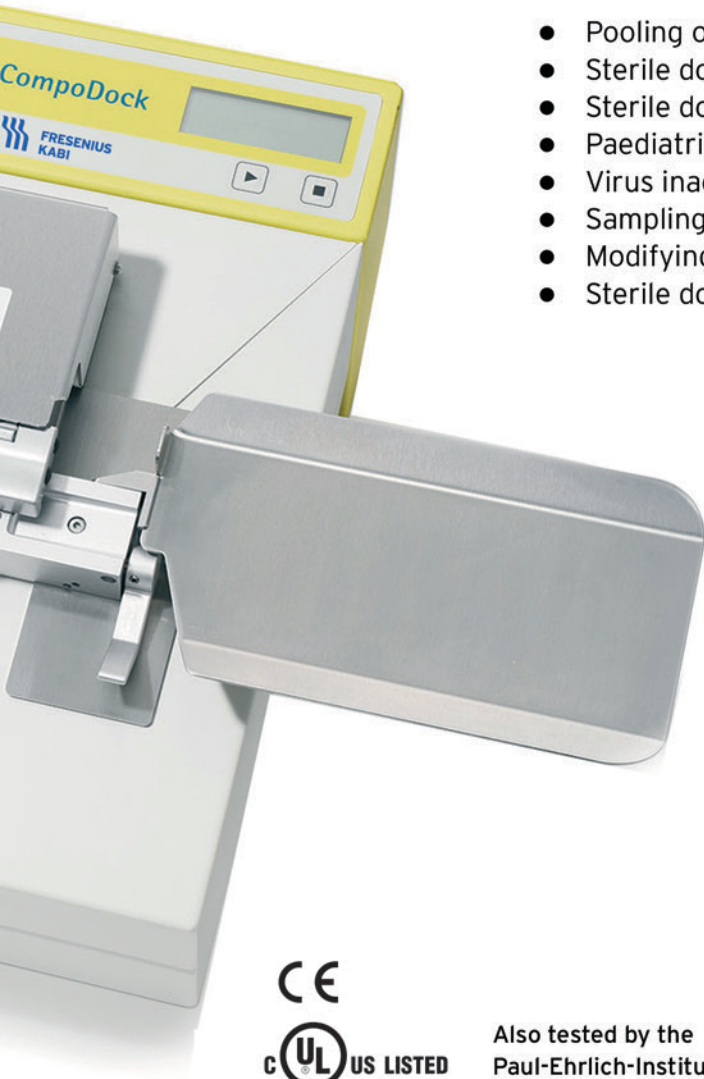
CompoDock enables you to make sterile connections between medical PVC tubing:

- between all wet and dry tubing combinations (wet/wet · wet/dry · dry/dry)
- with outer diameter varying for standard versions between 3.9 mm and 4.6 mm (3.9/3.9 · 3.9/4.6 · 4.6/4.6)
- with a process cycle time of approximately 20 seconds

For other tube dimensions please contact your local sales representative



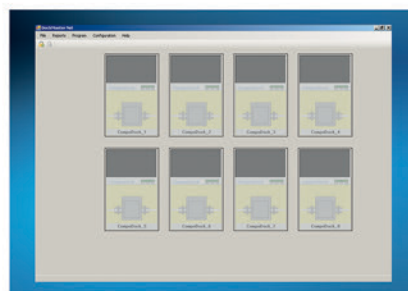
Also tested by the Paul-Ehrlich-Institut (PEI)



interfaces



Simple loading of bag systems with clamps only have one tube channel: a mix up by accident is eliminated

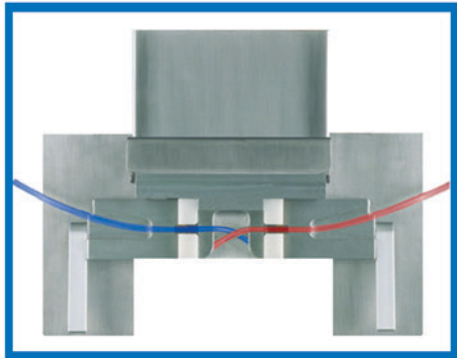


DockMaster Net program for data acquisition according to GMP rules

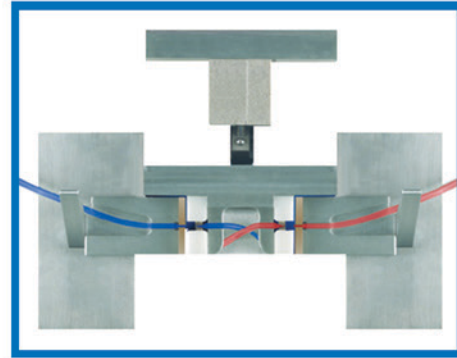


Simple two step manual process to create a sterile connection

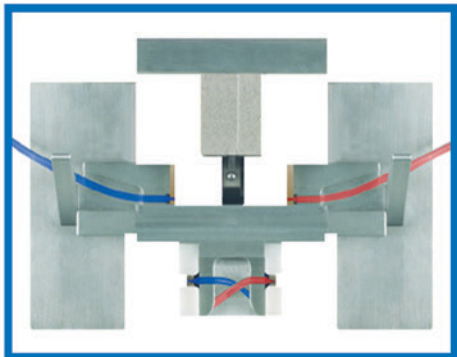
# Patented technology for a sterile connection of medical PVC tubes



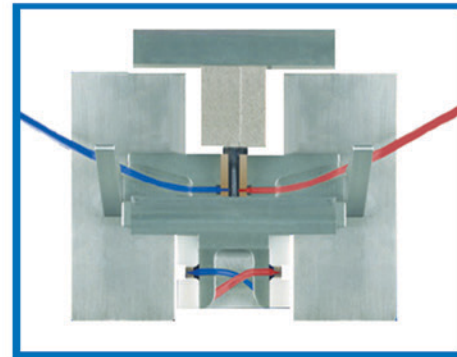
1. The tubes are placed inside the clamps. As there is only one tube channel, a mix up by accident is impossible.



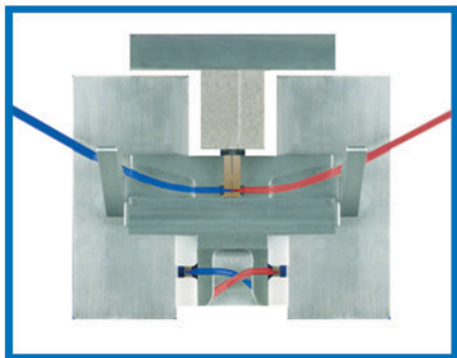
2. The docking process is fully automated. After the clamps are closed the tube ends are sealed.



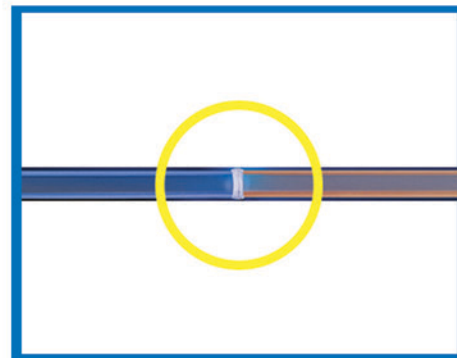
3. The clamps move to the upper heater and docking chamber.



4. The permanent heating element comes out and heats the sealed tube ends without touching them, resulting in only little odour.



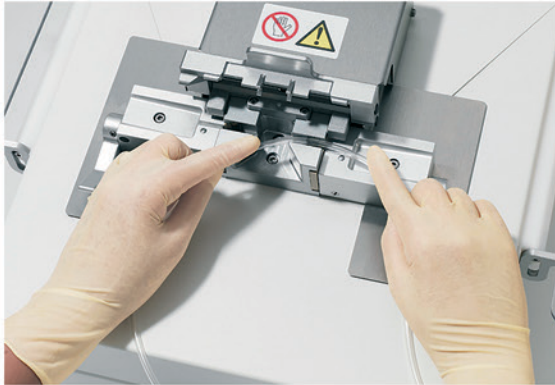
5. In the docking process, both clamps move together to connect the heated tube ends.



6. The dock is now ready and can easily be opened by pressing the connected tubes.

# CompoDock® Sterile connection of PVC tubing

Just two manual steps to create a sterile connection



**STEP 1:** Place the tubing inside the tube channels, press down the position cover, close the clamps. The docking process starts automatically.



**Step 2:** take out the dock and press the START button to reset the clamps for the next process cycle.

## Ordering information

For more information such as literature, technical details, working instructions and equipment, please contact your local sales representative.

CE marked, Directive 2014/30/EU and Directive 2014/35/EU.

Electrical safety, IEC 61010-1

Cleared for sales in the United States

The signs/names marked with ® are registered trademarks of the Fresenius Group in selected countries.

## Process efficiency to help you achieve more



**FRESENIUS  
KABI**

caring for life

Fresenius Kabi AG  
61346 Bad Homburg  
Germany

Phone: +49 (0) 61 72 608-0  
Fax: +49 (0) 61 72 608-5786

compodock@fresenius-kabi.com  
www.fresenius-kabi.com