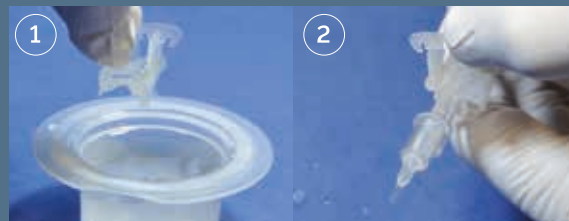


LOADING GUIDE

Synthesis[®]

PRELOADED

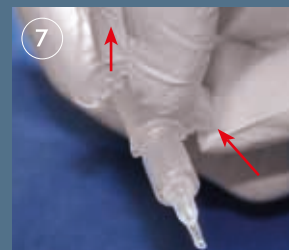
- ① Open the container; remove the loading cartridge that contains the IOL from the container by pulling on the armature taking care not to remove the protective clip.
- ② Insert the loading cartridge into the injector body until it locks into position.
- ③ Carefully rinse the lens with balanced salt solution.



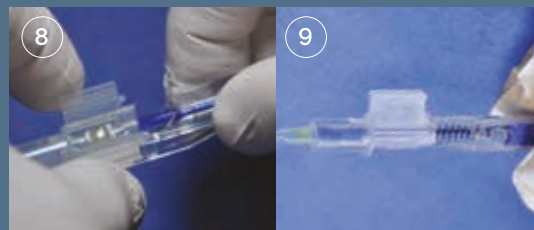
- ④ Through the filling hole, fill the cartridge tunnel with viscoelastic.
- ⑤ Fill a small amount of visco behind the lens at the rear of the loading chamber.
- ⑥ Push the plunger until the silicone tip approaches the rear of the loading chamber.



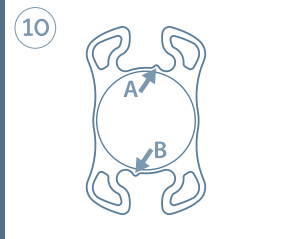
- ⑦ Carefully remove the clip from the loading chamber:
 - Grab the armature with two fingers while rotating the bottom hinge upwards with the thumb
 - Lift vertically.



- ⑧ Check that the lens is correctly positioned and close the wings of the loading chamber. When loaded correctly, you will hear a "click" sound.
- ⑨ Push the plunger to position the implant in the cartridge's tunnel. The system is ready for injection.



- ⑩ Once implanted, the orientation features of the Synthesis's implant must be oriented at the top right (A) and at the bottom left (B).



CUTTING EDGE
sense of innovation

MANUFACTURED BY CUTTING EDGE
www.cutting-edge.eu

CE
0197

Reserved for health care professionals. Please refer to the operating instructions.