



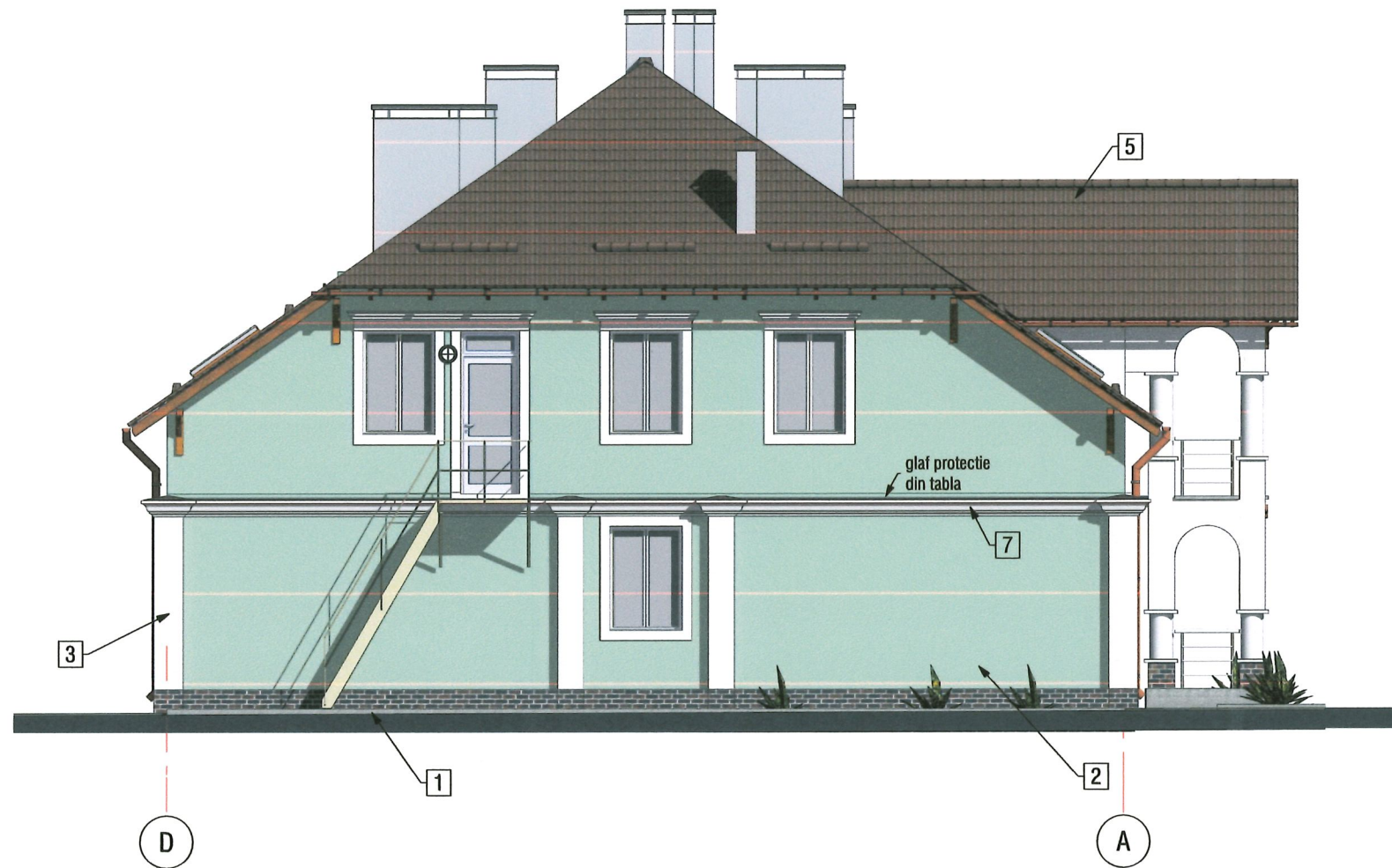
**Finisări exterioare**

1. Soclu: placaj cu caramida decorativa, rosu maro (RAL 8012)
2. Pereți exteriori: tencuială fina pe termoizolant, albastru deschis (RAL 6027), total 450,00 m.p
3. Fragmente pereti: tencuiala, vopsire, alb
4. Elemente tamplarie: PVC cu geam termopan, alb
5. Învelitoare acoperiș: tigla metalica, maro mat (RAL 8017), total 590,00 m.p
6. Elemente sarpanta, streășina capriori: slefuire, lemn natural
7. Detaliu decorativ (solbanc): din polistiren tip "IZODECOR", alb
8. Scara de evacuare, grilaje de protecție: din metal, gri (RAL 7035)
9. Ansamblu balustrada cu elemente orizontale: din inox, alb
10. Elemente sistem pluvial: din tabla de otel zincata, maro (RAL 8017)

Nr.invent.autent.      Semnatura si data      Schimb nr. invent.



						Obiect 788-1    -SA			
						Reabilitarea si extinderea SPF "Brinza" amplasat in intravilanul s.Brinza, r-n Cahul			
mod.	nr.part.	plansa	nr.doc.	semnatura	data	Poz.1. Bloc administrativ SPF "Brinza"	faza	planșa	planșe
							PE	14	
AȘP		M.Eni				Solutii cromatice fatada 1-5	"Verilarproiect" S.A.		
IȘP		I.Gusilo							
arhitect		A.Corghencea							



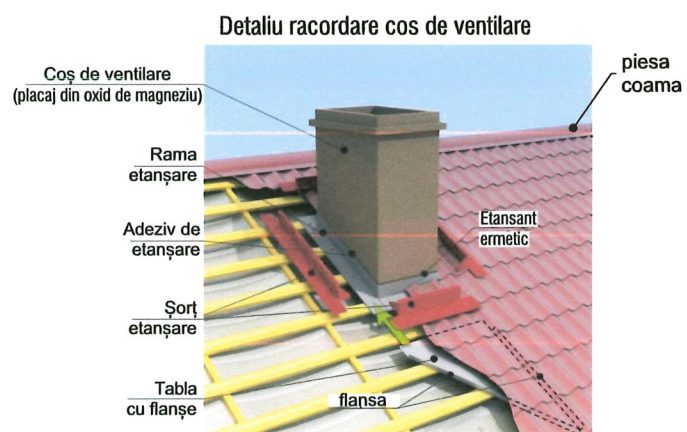
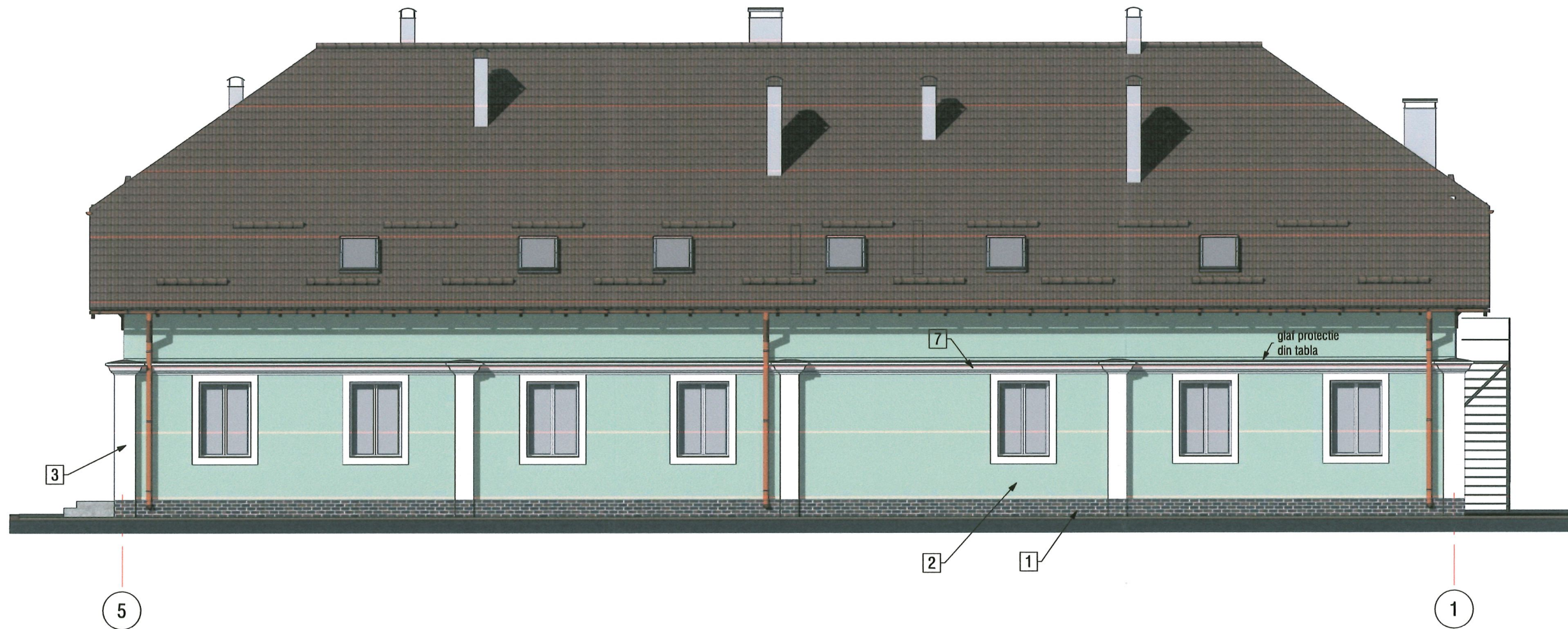
Schimb nr. invent.

Semnatura si data

Nr.invent.autent.

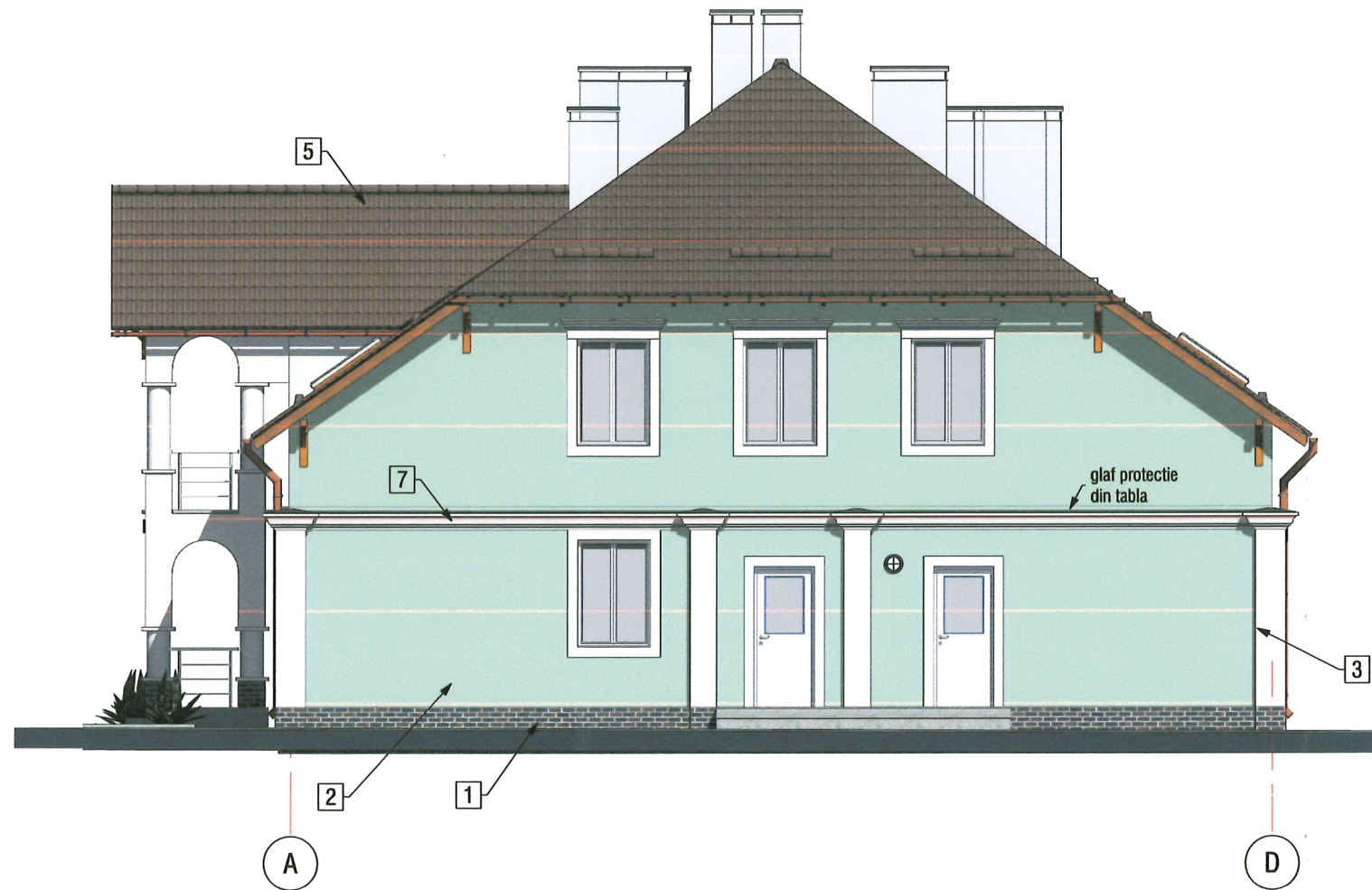
						Obiect 788-1 -SA				
						Reabilitarea si extinderea SPF "Brinza" amplasat in intravilanul s.Brinza, r-n Cahul				
mod.	nr.part.	plansa	nr.doc.	semnatura	data	Poz.1. Bloc administrativ SPF "Brinza"		faza	plansa	planse
						PE		15		
AŞP		M.Eni				Solutii cromatice fatada D-A		"Verilarproiect" S.A.		
IŞP		I.Gusilo								
arhitect		A.Corghencea								





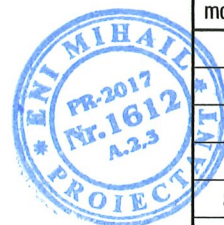
						Obiect 788-1 -SA			
						Reabilitarea si extinderea SPF "Brinza" amplasat in intravilanul s.Brinza, r-n Cahul			
mod.	nr.part.	plansa	nr.doc.	semnatura	data		faza	planșa	planșe
						Poz.1. Bloc administrativ SPF "Brinza"	PE	16	
AȘP		M.Eni		<i>[Signature]</i>		Solutii cromatice fatada 5-1	"Verilarproiect" S.A.		
IȘP		I.Gusilo		<i>[Signature]</i>					
arhitect		A.Corghencea		<i>[Signature]</i>					

Schimb nr. invent.	
Semnatura si data	
Nr.invent.autent.	



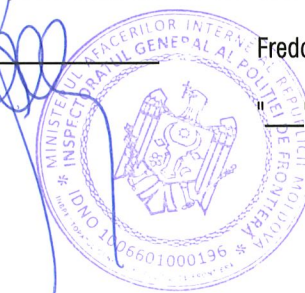
Nr. invent. autent.      Semnatura si data      Schimb nr. invent.

						Obiect 788-1    -SA		
						Reabilitarea si extinderea SPF "Brinza" amplasat in intravilanul s.Brinza, r-n Cahul		
mod.	nr.part.	plansa	nr.doc.	semnatura	data	faza	planşa	planşe
						Poz.1. Bloc administrativ SPF "Brinza"	PE	17
AŞP		M.Eni		<i>[Signature]</i>				
IŞP		I.Gusilo		<i>[Signature]</i>				
arhitect		A.Corghencea		<i>[Signature]</i>				
Solutii cromatice fatada A-D						"Verilarproiect" S.A.		



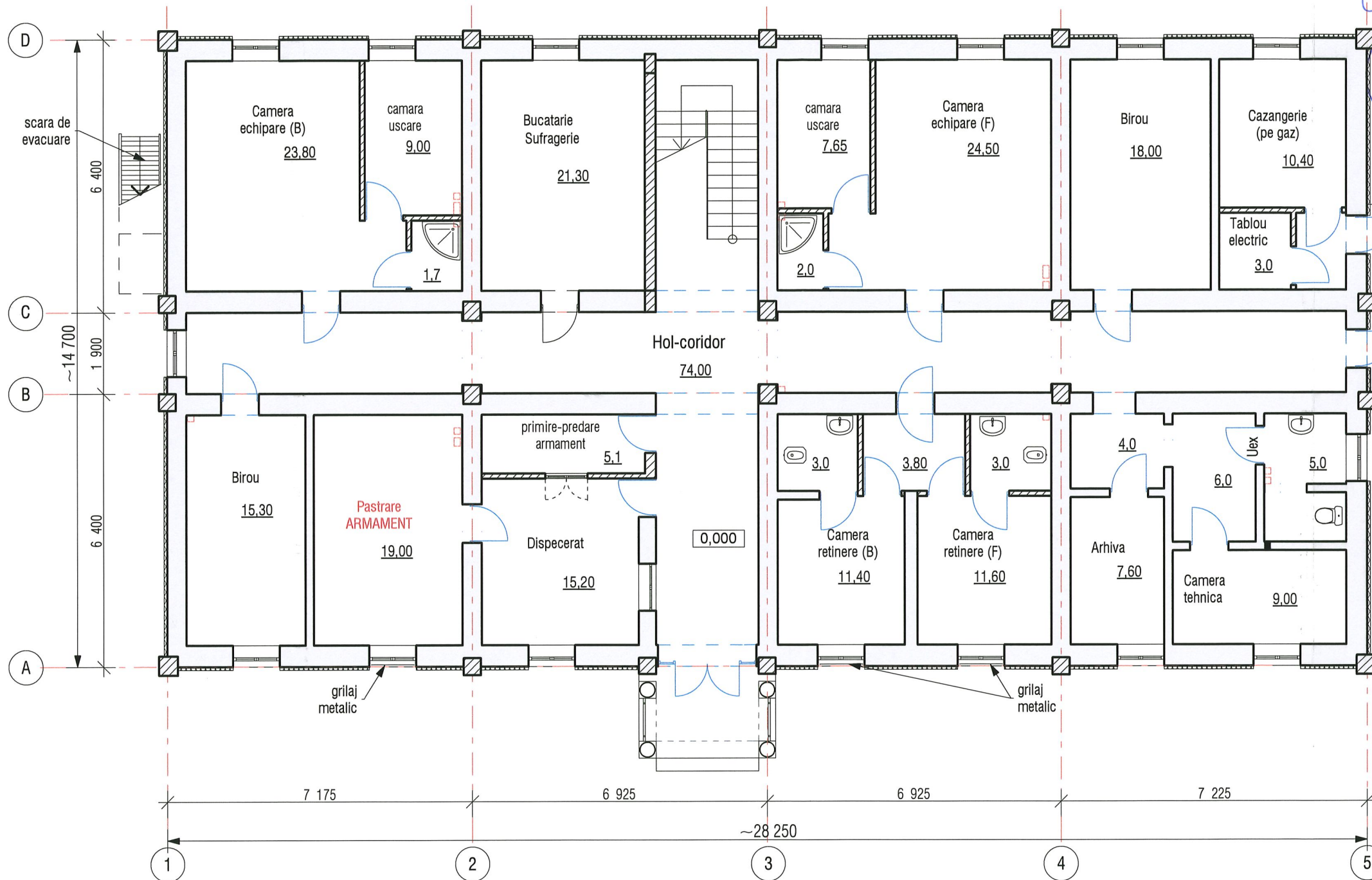
APROBAT:

Seful Inspectoratului General al Politiei de Frontiera (IGPF) al MAI



Fredolin LECARI

2018



Schimb nr. invent.  
Semnatura si data  
Nr.invent.autent.

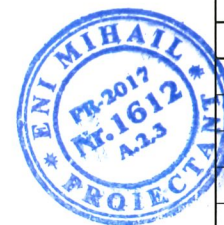
COORDONAT:  
Sef adjunct IGPF  
Sef Directia Regionala Sud

*[Signature]* V.Fiodorov  
I.Focşa

Sef Directia Management logistic si achizitii *[Signature]* A.Afteniuc

Sef Directia Generala control al frontierei *[Signature]* C.Radu

Sef DPPA *[Signature]* M.Pislaras  
Sef DGMO *[Signature]* S. Severin



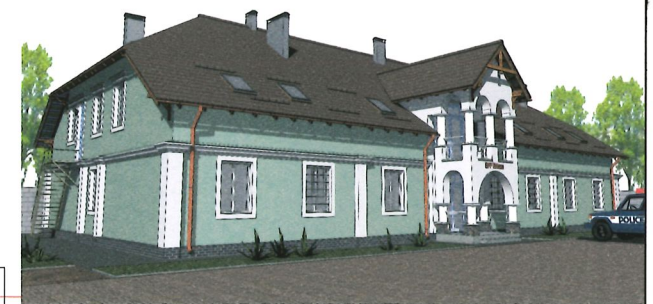
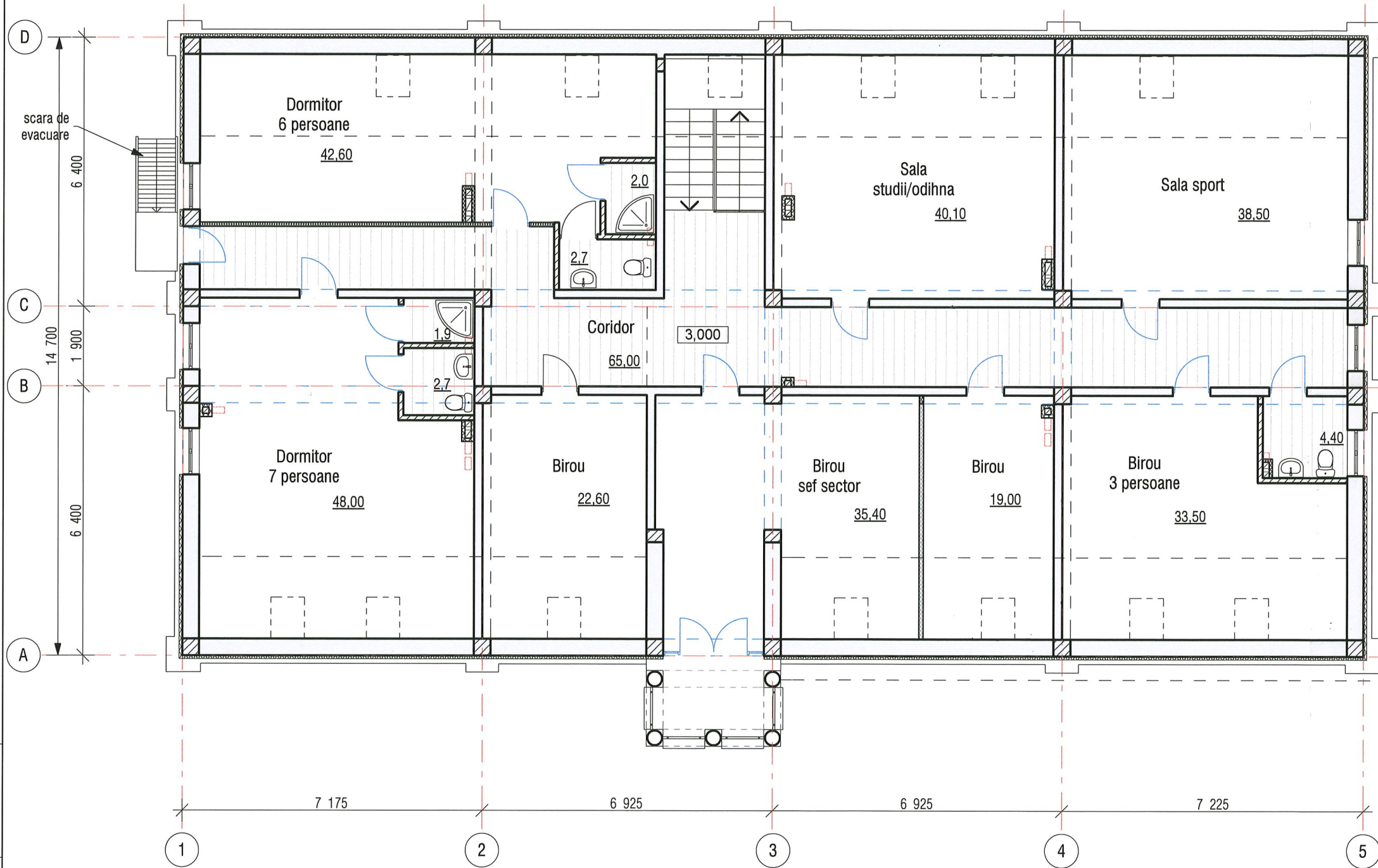
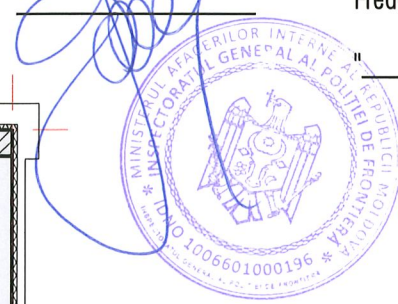
						Obiect 788-1 -SA				
						Reabilitarea si extinderea SPF "Brinza" amplasat in intravilanul s.Brinza, r-n Cahul				
mod.	nr.part.	plansa	nr.doc.	semnatura	data	Poz.1. Bloc administrativ SPF "Brinza"		faza	planşa	planşe
				<i>[Signature]</i>		PE		4		
AŞP		M.Eni		<i>[Signature]</i>		Plan parter, cota 0,000		"Verilarproiect" S.A.		
IŞP		I.Gusilo		<i>[Signature]</i>						
arhitect		A.Corghencea		<i>[Signature]</i>						

APROBAT:

Seful Inspectoratului General al Politiei de Frontiera (IGPF) al MAI

Fredolin LECARI

" " 2018



Schimb nr. invent.  
Semnatura si data  
Nr.invent.autent.

COORDONAT:  
Sef adjunct IGPF  
Sef Directia Regionala Sud

*[Signature]*  
V.Fiodorov  
I.Focşa

Sef Directia Management logistic si achizitii

*[Signature]*  
A.Afteniuc

Sef Directia Generala control al frontierei

*[Signature]*  
C.Radu

Sef DPPA  
Sef DGMO

*[Signature]*  
M.Pislaras  
S. Severin



						Obiect 788-1 -SA			
						Reabilitarea si extinderea SPF "Brinza" amplasat in intravilanul s.Brinza, r-n Cahul			
mod.	nr.part.	plansa	nr.doc.	semnatura	data	Poz.1. Bloc administrativ SPF "Brinza"	faza	planşa	planşe
				<i>[Signature]</i>			PE	5	
AŞP		M.Eni		<i>[Signature]</i>		Plan etaj-mansarda, cota 3,000	"Verilarproiect" S.A.		
IŞP		I.Gusilo		<i>[Signature]</i>					
arhitect		A.Corghencea		<i>[Signature]</i>					