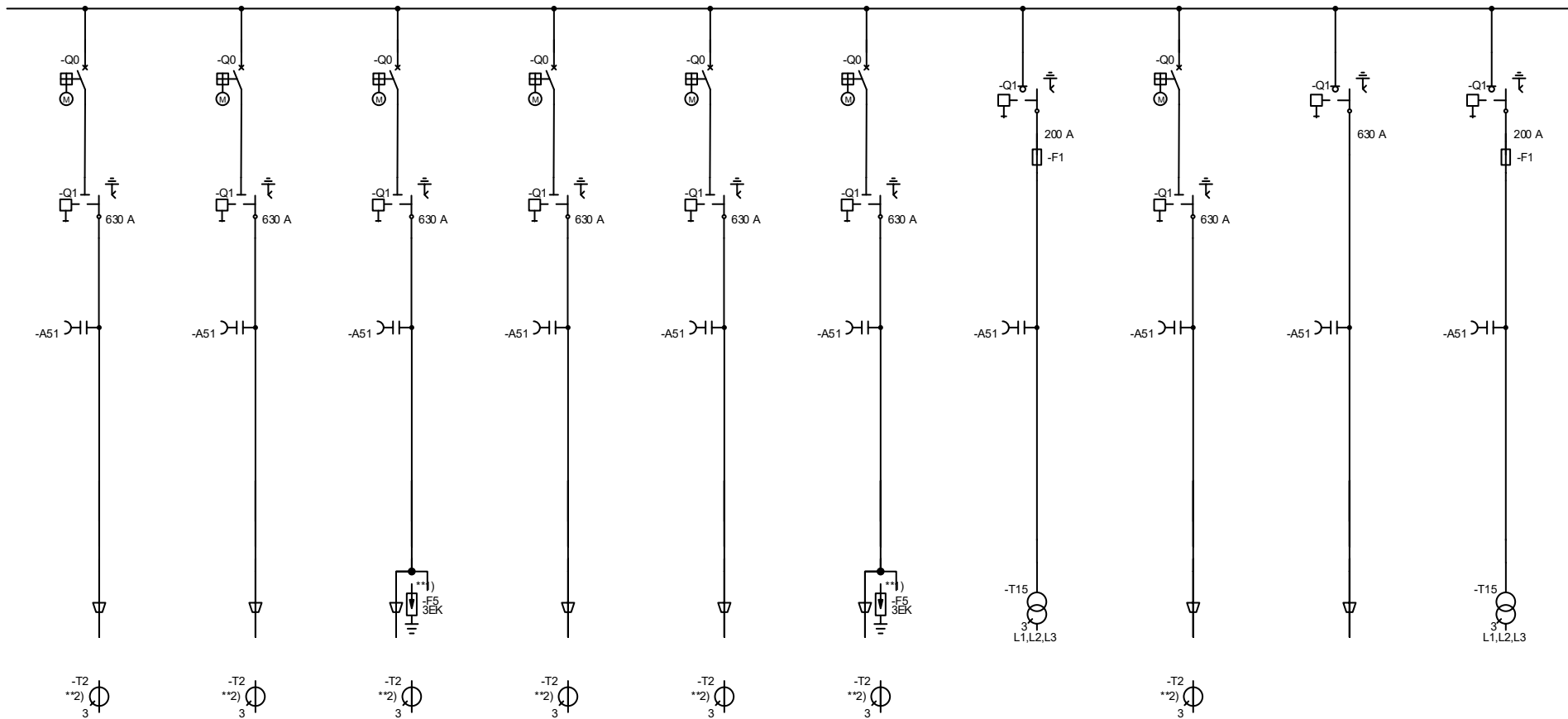


=K01 =K02 =K03 =K04 =K05 =K06 =K07 =K08 =K09 =K10
 +K01 +K02 +K03 +K04 +K05 +K06 +K07 +K08 +K09 +K10
 =KZ01 =KZ01 =KZ04 =KZ01 =KZ01 =KZ04 =KZ02 =KZ01 =KZ03 =KZ02



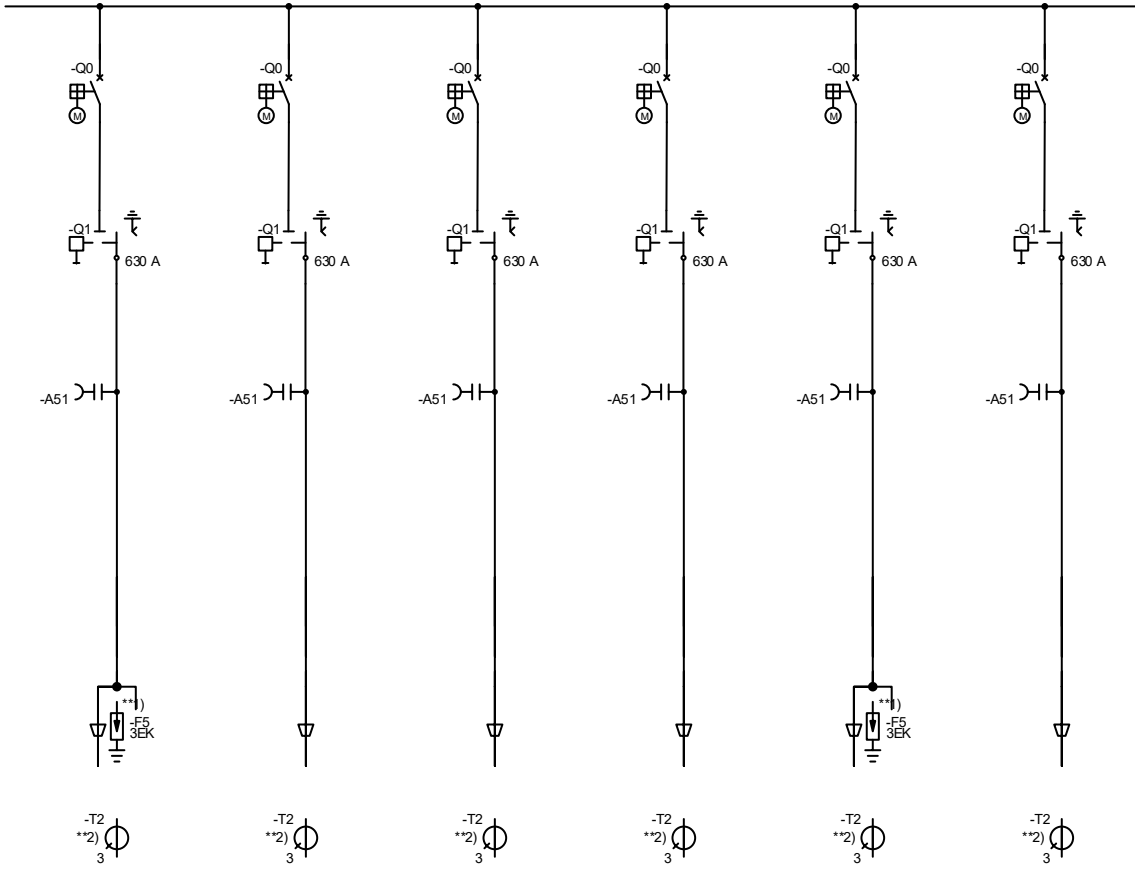
Copyright (C) SIEMENS AG 2012. All Rights Reserved

**1,2) For notes, see front view page

System/rated frequency 3~50 Hz Operating voltage 10.0 kV Rated voltage 24.0 kV Rated short-time withst. curr. 20.0 kA (3 s) Rated continuous current 630 A

Printout		10.12.2024		Siemens, Romania;; ()		1		=10.12.2024	
Created by		Apostol		Simosec				=10.12.2024	
Checked by				Orig. / Repl. 1. / Repl. by				B01	
Standard								Sh.No 01+	
Issue	Revision	Date	Name	Standard		Single-line diagram		2	

=K11 =K12 =K13 =K14 =K15 =K16
 +K11 +K12 +K13 +K14 +K15 +K16
 =KZ04 =KZ01 =KZ01 =KZ01 =KZ04 =KZ01



System/rated frequency 3~50 Hz Operating voltage 10.0 kV Rated voltage 24.0 kV Rated short-time withst. curr. 20.0 kA (3 s) Rated continuous current 630 A

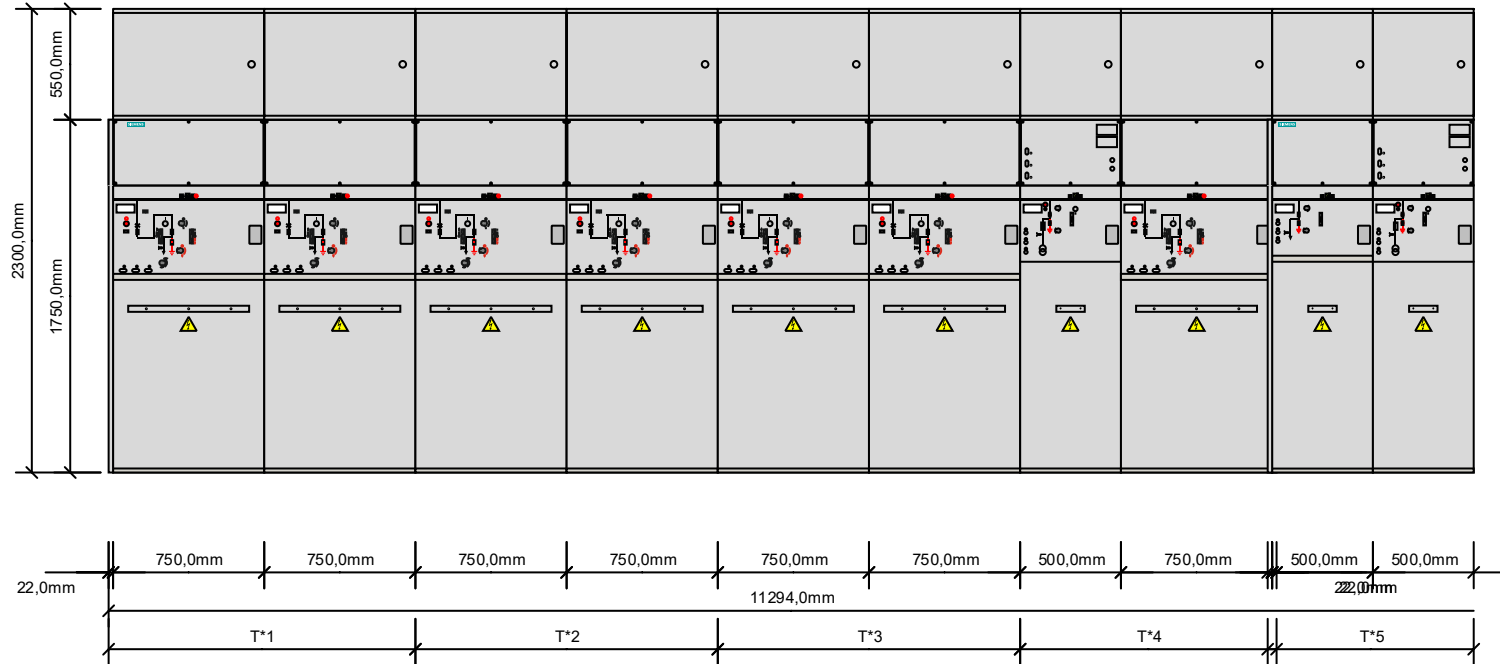
Copyright (C) SIEMENS AG. 2012. All Rights Reserved

**1,2) For notes, see front view page

Printout		10.12.2024		Siemens, Romania;; ()		1		=10.12.2024	
Created by		Apostol		SIEMENS		SIMOSEC		=10.12.2024	
Checked by						SIMOSEC		B02	
Standard				Simosec		SIMOSEC-30643		Sh.No 02-	
Issue	Revision	Date	Name	Orig./ Repl. f./ Repl. by		Single-line diagram		2	

FRONT VIEW

=K01 =K02 =K03 =K04 =K05 =K06 =K07 =K08 =K09 =K10
 +K01 +K02 +K03 +K04 +K05 +K06 +K07 +K08 +K09 +K10
 =KZ01 =KZ01 =KZ04 =KZ01 =KZ01 =KZ04 =KZ02 =KZ01 =KZ03 =KZ02



LOAD DATA AND MINIMUM DISTANCES	
1. PERMANENT LOADS VERTICAL SINGLE LOAD G_v PANEL WIDTH:	375 mm 500 mm 750 mm 875 mm 1000 mm
2. NON PERMANENT LOADS LIVE LOAD q_v	6 kN/m ²
3. MINIMUM DISTANCES FRONT OPERATING AISLE WALL DISTANCE ON THE LEFT WALL DISTANCE ON THE RIGHT "a" WALL DISTANCE REAR (with rear duct)	1000 mm *1) 100 mm *2) 100 mm *2) ≥ 35 mm
4. CEILING HEIGHT	≥ 2400 mm
5. MINIMUM DOOR OPENING: Switchgear height: 1750 mm: switchgear without low-voltage compartment, without front covers HEIGHT WIDTH Switchgear height: 2100 mm: HEIGHT WIDTH switchgear with low-voltage compartment 350 mm: HEIGHT WIDTH Switchgear height: 2300 mm: switchgear with low-voltage compartment 550 mm: HEIGHT WIDTH	2.0 kN 3.5 kN 4.5 kN 5.0 kN 5.0 kN 2300 mm 1000 / 1250 / 1500 mm ≥ 2400 mm 1000 / 1250 / 1500 mm ≥ 2400 mm
6. Depth of cable basement (depends on design of delivery switchgear) *3) *4) Please note: Bending radius of cable *1) Level of installation (altitude)	> 600 mm > 1400 mm

Control aisle:
 *1) Depending on national requirements; for extension/panel replacement, a control aisle is recommended of at least: 1000 mm
 (Removable circuit-breaker require a control aisle ≥ 1000 mm)
 *2) For wall-standing arrangement a lateral wall distance (left or right) is recommended of at least: 100 mm
 For free-standing arrangement a lateral wall distance (left or right) is necessary of at least: 100 mm
 *3) Position of cable fixing (cable bracket), underneath the panel, in the cable basement max. 505 mm (445+60)
 *4) Deep floor cover, for cable basement, additionally extensible downwards at site max. 600 mm
 Position of cable fixing (cable bracket), underneath the panel, in the cable basement
 *3) *4) For installation "on site"
 (Delivery in by-pack kit)
 Hcc = Additional available length for installation below the panel
 For switchgear design with IAC 21 kA: the height of the switchgear will be at least: 2100 mm

references from page single line diagram:
 **1) for installation "on site"
 **2) installation "on site" (installation prepared)

Note for installation: Acc. to delivery version of transport units, TU groups (TU's or panels) will be assembled on site

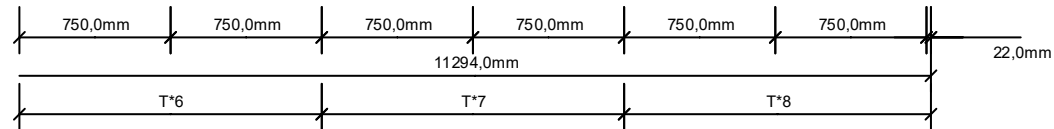
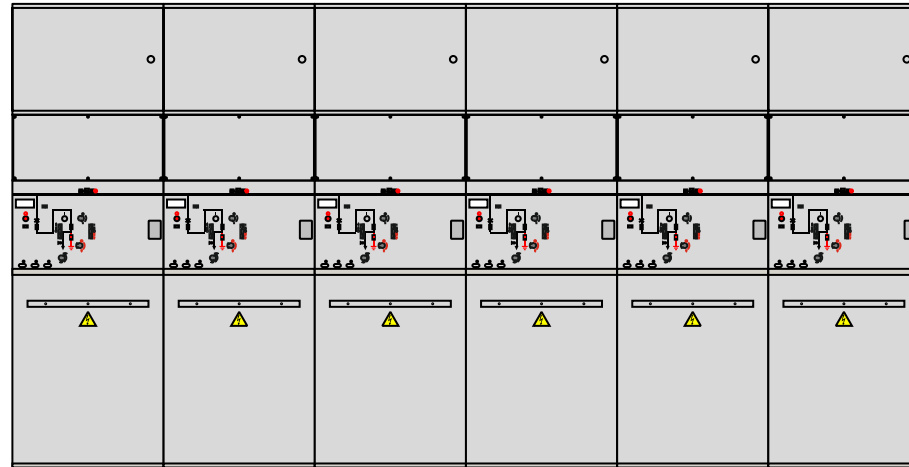
System/rated frequency 3~50 Hz Operating voltage 10.0 kV Rated voltage 24.0 kV Rated short-time withst. curr. 20.0 kA (3 s) Rated continuous current 630 A

Partout	10.12.2024	Siemens, Romania; ()	SIEMENS	SIMOSEC SIMOSEC SIMOSEC-30643	1	=10.12.2024	B01
Created by	Apostol	Simosec					
Checked by							
Issue	Revision	Date	Name	Standard	Orig./ Repl. / Repl. by	Arrangement diagram	2

Copyright (C) SIEMENS AG. 2012. All Rights Reserved

FRONT VIEW

=K11 =K12 =K13 =K14 =K15 =K16
 +K11 +K12 +K13 +K14 +K15 +K16
 =KZ04 =KZ01 =KZ01 =KZ01 =KZ04 =KZ01



LOAD DATA AND MINIMUM DISTANCES	
1. PERMANENT LOADS	5. MINIMUM DOOR OPENING:
VERTICAL SINGLE LOAD G_v	Switchgear height: 1750 mm:
PANEL WIDTH:	switchgear without low-voltage compartment, without front covers
375 mm	HEIGHT
500 mm	2.0 kN
750 mm	3.5 kN
875 mm	4.5 kN
1000 mm	5.0 kN
2. NON PERMANENT LOADS	switchgear with low-voltage compartment 350 mm:
LIVE LOAD q_v	HEIGHT
6 kN/m ²	2300 mm
3. MINIMUM DISTANCES	switchgear with low-voltage compartment 550 mm:
FRONT OPERATING AISLE	HEIGHT
1000 mm *1)	≥ 2400 mm
WALL DISTANCE ON THE LEFT	WIDTH
100 mm *2)	1000 / 1250 / 1500 mm
WALL DISTANCE ON THE RIGHT	100 mm *2)
*a) WALL DISTANCE REAR (with rear duct)	≥ 35 mm
4. CEILING HEIGHT	≥ 2400 mm

Control aisle:
 *1) Depending on national requirements; for extension/panel replacement, a control aisle is recommended of at least: 1000 mm
 (Removable circuit-breaker require a control aisle ≥ 1000 mm)
 *2) For wall-standing arrangement a lateral wall distance (left or right) is recommended of at least: 100 mm
 For free-standing arrangement a lateral wall distance (left or right) is necessary of at least: 100 mm
 *3) Position of cable fixing (cable bracket), underneath the panel, in the cable basement max. 505 mm (445+60)
 *4) Deep floor cover, for cable basement, additionally extensible downwards at site max. 600 mm
 Position of cable fixing (cable bracket), underneath the panel, in the cable basement
 *3) *4) For installation "on site"
 (Delivery in by-pack kit)
 Hcc = Additional available length for installation below the panel
 Hcc
 For switchgear design with IAC 21 kA: the height of the switchgear will be at least: 2100 mm

references from page single line diagram:
 **1) for installation "on site"
 **2) installation "on site" (installation prepared)

Note for installation: Acc. to delivery version of transport units, TU groups (TU's or panels) will be assembled on site

THE LOCATION AND DETAIL DIAGRAMS DO HAVE SYMBOLIC CHARACTER AND DO NOT SHOW THE ACTUAL SCOPE OF SUPPLY.

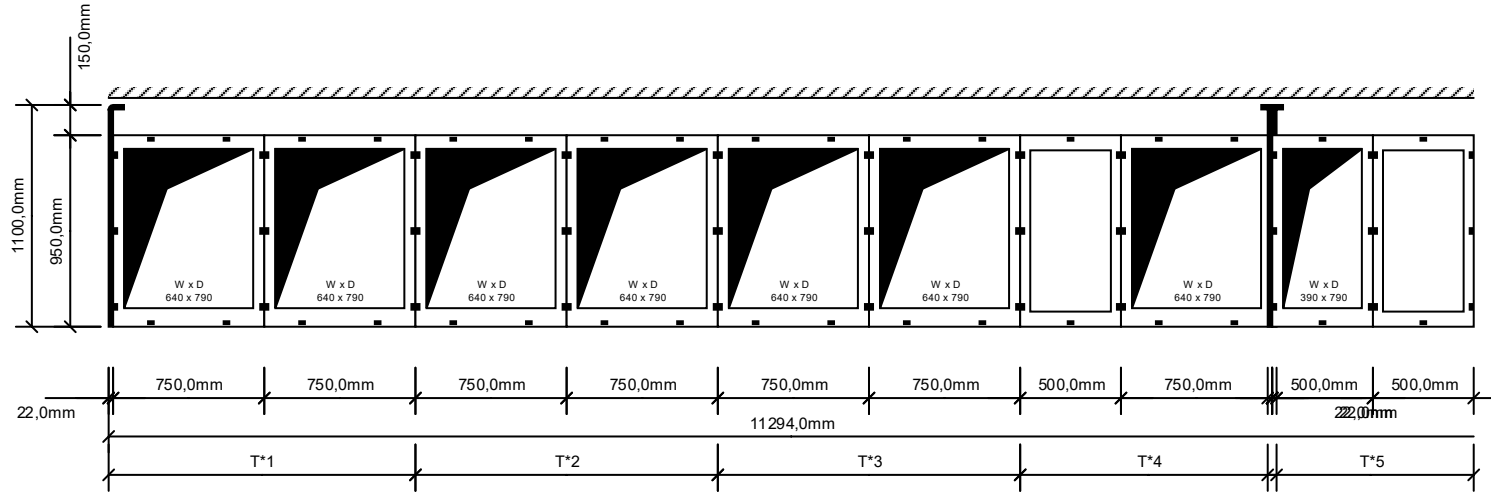
System/rated frequency Operating voltage Rated voltage Rated short-time withst. curr. Rated continuous current
 3~50 Hz 10.0 kV 24.0 kV 20.0 kA (3 s) 630 A

Copyright (C) SIEMENS AG 2012. All Rights Reserved

Partout	10.12.2024	Siemens, Romania; ()	SIEMENS	SIMOSEC SIMOSEC SIMOSEC-30643	1	=10.12.2024	B02
Created by	Apostol	Simosec					
Checked by		Orig./Repl. I./Repl. by	Arrangement diagram				2

PLAN VIEW

=K01 =K02 =K03 =K04 =K05 =K06 =K07 =K08 =K09 =K10
 +K01 +K02 +K03 +K04 +K05 +K06 +K07 +K08 +K09 +K10
 =KZ01 =KZ01 =KZ04 =KZ01 =KZ01 =KZ04 =KZ02 =KZ01 =KZ03 =KZ02



LOAD DATA AND MINIMUM DISTANCES

1. PERMANENT LOADS
 VERTICAL SINGLE LOAD G_v
 PANEL WIDTH:
 375 mm
 500 mm
 750 mm
 875 mm
 1000 mm

2. NON PERMANENT LOADS
 LIVE LOAD q
 6 kN/m²

3. MINIMUM DISTANCES
 FRONT OPERATING AISLE
 WALL DISTANCE ON THE LEFT
 WALL DISTANCE ON THE RIGHT

*a WALL DISTANCE REAR (with rear duct)

4. CEILING HEIGHT

1000 mm *1)

100 mm *2)

100 mm *2)

≥ 35 mm

≥ 2400 mm

5. MINIMUM DOOR OPENING:

Switchgear height: 1750 mm:

switchgear without low-voltage compartment, without front covers

HEIGHT

WIDTH

Switchgear height: 2100 mm:

switchgear with low-voltage compartment 350 mm:

HEIGHT

WIDTH

Switchgear height: 2300 mm:

switchgear with low-voltage compartment 550 mm:

HEIGHT

WIDTH

1000 / 1250 / 1500 mm

≥ 2400 mm

1000 / 1250 / 1500 mm

*3) *4)

> 600 mm

> 1400 mm

Please note: Bending radius of cable

*v - Level of installation (altitude)

Control aisle:

*1) Depending on national requirements; for extension/panel replacement, a control aisle is recommended of at least:

(Removable circuit-breaker require a control aisle ≥ 1000 mm)

*2) For wall-standing arrangement a lateral wall distance (left or right) is recommended of at least:

For free-standing arrangement a lateral wall distance (left or right) is necessary of at least:

*3) Position of cable fixing (cable bracket), underneath the panel, in the cable basement

*4) Deep floor cover, for cable basement, additionally extensible downwards at site

*3) *4) For installation "on site" (Delivery in by-pack kit)

Hcc = Additional available length for installation below the panel

For switchgear design with IAC 21 kA: the height of the switchgear will be at least:

1000 mm

100 mm

100 mm

max. 505 mm(445+60)

max. 600 mm

Hcc

Hcc

2100 mm

FLOOR OPENING (foundation opening) in mm:

Width x Depth:

Details see "W x D" by panel floor plan

THESE CONSTRUCTIONAL DATA OF SIEMENS AG ARE NOT BINDING FOR CONSTRUCTION. THEY ARE ONLY VALID AS A BASE FOR PRODUCTION OF BINDING CONSTRUCTIONAL DRAWINGS. FURTHER INFORMATION ACCORDING CONSTRUCTIONAL DATA CAN BE FOUND IN THE RELATED OPERATING AND INSTRUCTION MANUAL.

System/rated frequency
 3~50 Hz

Operating voltage
 10.0 kV

Rated voltage
 24.0 kV

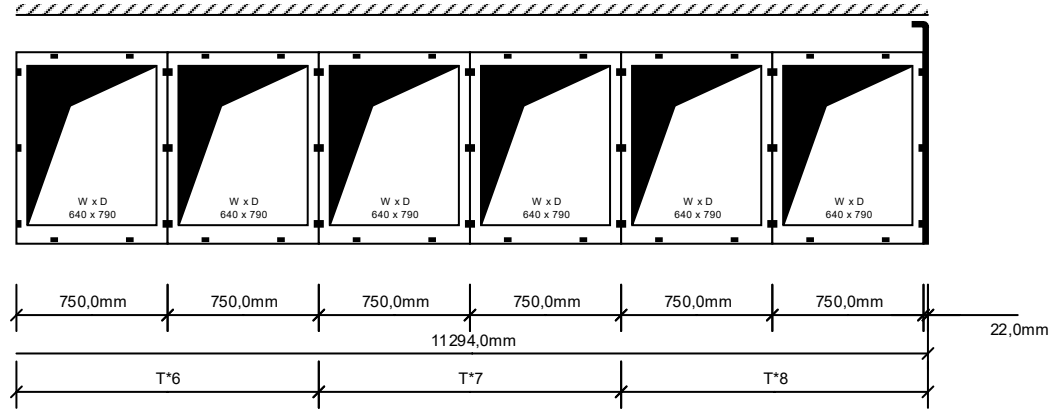
Rated short-time withst. curr.
 20.0 kA (3 s)

Rated continuous current
 630 A

Partout	10.12.2024	Siemens, Romania; ()	SIMOSEC	1	=10.12.2024	
Created by	Apostol	Siemens	SIMOSEC		+10.12.2024	B01
Checked by		Simosec	SIMOSEC-30643			Sh.No 01+
Issue	Revision	Date	Name	Standard	Orig./ Repl. I./ Repl. by	Constructional data
1		2		3		2

PLAN VIEW

=K11 =K12 =K13 =K14 =K15 =K16
 +K11 +K12 +K13 +K14 +K15 +K16
 =KZ04 =KZ01 =KZ01 =KZ01 =KZ04 =KZ01



LOAD DATA AND MINIMUM DISTANCES

1. PERMANENT LOADS		5. MINIMUM DOOR OPENING:	
VERTICAL SINGLE LOAD G_v		Switchgear height: 1750 mm:	
PANEL WIDTH:		switchgear without low-voltage compartment, without front covers	
375 mm	2.0 kN	HEIGHT	1000 / 1250 / 1500 mm
500 mm	3.5 kN	WIDTH	2000 mm
750 mm	4.5 kN	Switchgear height: 2100 mm:	1000 / 1250 / 1500 mm
875 mm	5.0 kN	switchgear with low-voltage compartment 350 mm:	
1000 mm	5.0 kN	HEIGHT	2300 mm
2. NON PERMANENT LOADS		Switchgear height: 2300 mm:	
LIVE LOAD q_v		switchgear with low-voltage compartment 550 mm:	
6 kN/m ²		HEIGHT	
		WIDTH	
		1000 / 1250 / 1500 mm	
3. MINIMUM DISTANCES		6. Depth of cable basement	
FRONT OPERATING AISLE		(depends on design of delivery switchgear)	
1000 mm *1)		*3) *4)	
100 mm *2)		> 600 mm	
100 mm *2)		> 1400 mm	
*a) WALL DISTANCE REAR (with rear duct)		Please note: Bending radius of cable	
≥ 35 mm			
4. CEILING HEIGHT		xy - Level of installation (altitude)	
≥ 2400 mm			

Control aisle:
 *1) Depending on national requirements; for extension/panel replacement, a control aisle is recommended of at least: 1000 mm
 (Removable circuit-breaker require a control aisle ≥ 1000 mm)
 *2) For wall-standing arrangement a lateral wall distance (left or right) is recommended of at least: 100 mm
 For free-standing arrangement a lateral wall distance (left or right) is necessary of at least: 100 mm
 *3) Position of cable fixing (cable bracket), underneath the panel, in the cable basement max. 505 mm (445+60)
 *4) Deep floor cover, for cable basement, additionally extensible downwards at site max. 600 mm
 Position of cable fixing (cable bracket), underneath the panel, in the cable basement
 *3) *4) For installation "on site"
 (Delivery in by-pack kit)
 Hcc = Additional available length for installation below the panel Hcc
 For switchgear design with IAC 21 kA: the height of the switchgear will be at least: 2100 mm

FLOOR OPENING (foundation opening) in mm:
 Width x Depth:
 Details see "W x D" by panel floor plan

THESE CONSTRUCTIONAL DATA OF SIEMENS AG ARE NOT BINDING FOR CONSTRUCTION. THEY ARE ONLY VALID AS A BASE FOR PRODUCTION OF BINDING CONSTRUCTIONAL DRAWINGS. FURTHER INFORMATION ACCORDING CONSTRUCTIONAL DATA CAN BE FOUND IN THE RELATED OPERATING AND INSTRUCTION MANUAL.

System/rated frequency
 3~50 Hz

Operating voltage
 10.0 kV

Rated voltage
 24.0 kV

Rated short-time withst. curr.
 20.0 kA (3 s)

Rated continuous current
 630 A

Issue	Revision	Date	Name	Standard	2	Orig./Repl. I./Repl. by	3	Siemens, Romania; ()	4	SIEMENS	5	SIMOSEC SIMOSEC SIMOSEC-30643	6	1	7	10.12.2024 10.12.2024	8	B02 Sh.No 02- 2
Constructional data																		