

Passive Middle Ear Implants

Product Catalog



hearLIFE

Passive Middle Ear Implants From MED-EL

Connecting What Belongs Together

Our passive middle ear implants in a nutshell: Efficient at transmitting sound—and easy to handle. However, as each of our innovative implants has some unique features, a closer look is definitely worthwhile. As a company completely dedicated to otology and overcoming hearing loss as a barrier to communication and quality of life, we always go one step further at MED-EL.

MED-EL has always been driven by one thing: A passion to help people with hearing loss. That is why we have put all our experience from the fields of ear surgery and hearing rehabilitation into the development of our passive implants. And that is why we are the only company to offer a complete portfolio of implantable hearing solutions. Passive middle ear implants are the latest addition to our range of products. What can they do? Read on to find out more!

Contents

Partial Prostheses

- 5 mCLIP ARC Partial Prosthesis
- 6 mXACT PRO Partial Prosthesis Kit
- 7 mXACT Partial Prosthesis
- 8 mCLIP Partial Prosthesis
- 9 Partial Prosthesis Sizer

Total Prostheses

- 11 mXACT PRO Total Prosthesis Kit
- 12 mXACT Total Prosthesis Offcenter
- 14 mXACT Total Prosthesis Center
- 15 Total Prosthesis Sizer Kit

Stapes Prostheses

- 19 mFIX Stapes Prosthesis
- 20 mLOOP Stapes Prosthesis
- 21 mZAM Stapes Prosthesis
- 22 mAXIS Stapes Prosthesis

Fresh New Innovations

Have you seen our latest implants yet? The mXACT PRO partial and total prostheses have an adjustable length and feature a unique locking mechanism. The mCLIP ARC partial prosthesis has the potential to be a real game changer with its micro ball-joint, circular headplate and clip.

For Everyone

Our implants are available in various designs, lengths and diameters. This way, they not only fit the individual anatomy of each patient, but also your surgical preferences in terms of the type of coupling and design.

Optimal Visibility

All our tympanoplasty implants have generous recesses in the headplate, through which you can always see the coupling point. We also made intraoperative visibility a priority in our stapesplasty implants: Their slim design allows a full view of the operation area and patient's anatomy.

Flexible? Definitely!

To adapt all our implants to the patient's anatomy during surgery, you can bend the shaft of the implant. And with our tympanoplasty implants, you can even bend the headplate. There's no need for special equipment.

In Perfect Balance

The weight distribution of our implants is very balanced. This makes our prostheses inherently stable, and simplifies general handling and intraoperative placement.

So Delicate, So Strong

That might sound like a contradiction but it is not. Our prostheses are both low weight and extremely stiff. That is the perfect combination to optimally conduct sound to the oval window and into the inner ear.

Safety First

Our implants are made out of titanium, and are therefore both highly biocompatible and MRI-conditional up to 7.0 Tesla. That means your patients are ready for the future.

More Than Just Packaging

The red box, which contains our implants and sizers, is sophisticated and practical. See for yourself!







Partial Protheses

mCLIP ARC Partial Prosthesis

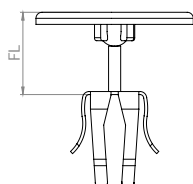
The mCLIP ARC combines flexibility with stability: Thanks to the combination of clip and innovative micro ball-joint, it sits stably on the stapes whilst at the same time being very flexible. It can follow quasi-static movements of the eardrum, preventing potential pressure spikes.

The design of the mCLIP ARC is new and the first of its kind in the world: The symmetrical clip and concentric alignment of the circular headplate on the ball-joint simplifies intraoperative handling while allowing effortless positioning on the stapes.

- Flexible and stable at the same time thanks to micro ball-joint and clip
- Headplate and ball-joint are symmetrical and concentric
- Simple handling

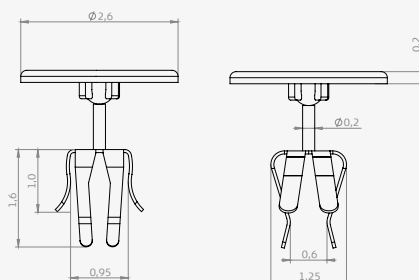


Article number	Functional length (FL) in mm
58502	0.75
58504	1.00
58506	1.25
58508	1.50
58510	1.75
58512	2.00
58514	2.25
58516	2.50
58518	3.00
58520	3.50



Technical Data

Weight: Approx. 3.4-3.9 mg, depending on length
MRI-conditional up to 7.0 Tesla
Material: Medical-grade titanium



mXACT PRO Partial Prosthesis Kit

With the mXACT PRO partial prosthesis kit, you can set the appropriate implant length easily and precisely—directly in the red packaging. There are no pre-set increments or additional tools required. You can also rotate the bell to align it with the headplate and adapt it to the individual patient's anatomy (stapes/handle of the malleus). Sterile sizers of different lengths are included in the same kit as the implant and can be easily removed to make intraoperative measurements.

- Increment-free, easy, and exact adjustment of the implant length from a functional length of 0.75 to 3.50 mm
- Variable rotation for easy anatomical adaptation of the bell
- Reduced logistical effort: only one kit for all lengths
- Articulated connection between the head of the stapes and the implant thanks to the rounded bell shape
- Easy-to-remove sizer

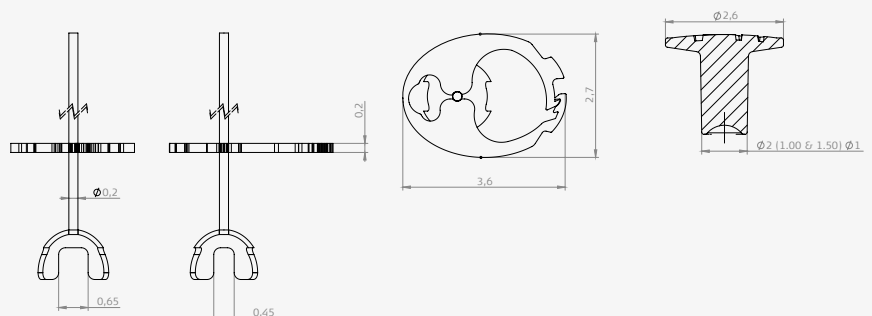


Article number	Functional length (FL) in mm
58496	0.75–3.50

Article number	Functional length (FL) in mm
58496	1.00
	1.50
	2.00
	2.50
	3.50

Technical Data

Weight: Approx. 2.5–4.7 mg, depending on length
 MRI-conditional up to 7.0 Tesla
 Implant Material: Medical-grade titanium
 Sizer Material: Polypropylene



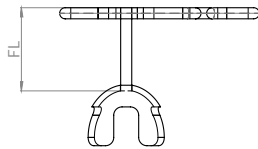
mXACT Partial Prosthesis

The round coupling structure provides a joint-like connection between the head of the stapes and the implant. In addition, the even weight distribution makes the mXACT partial prosthesis stable, which is particularly useful for placement and handling. The headplate and shaft are bendable, giving you the flexibility to adapt the implant to the patient's anatomy during surgery. The generous recesses in the headplate provide complete visibility of the coupling structure.

- Articulated connection between the head of the stapes and the implant
- Simple handling
- Intraoperative stability and flexibility
- Complete view of the coupling point

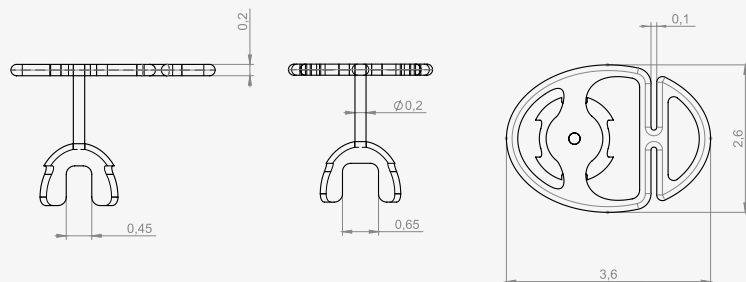


Article number	Functional length (FL) in mm
58033	0.75
58035	1.00
58037	1.25
58039	1.50
58041	1.75
58043	2.00
58045	2.25
58047	2.50
58051	3.00
58053	3.50



Technical Data

Weight: Approx. 2.5-4.5 mg, depending on length
MRI-conditional up to 7.0 Tesla
Material: Medical-grade titanium



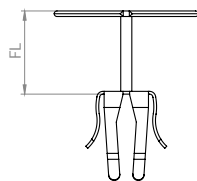
mCLIP Partial Prosthesis

The clip-coupling structure brings together two important advantages: On the one hand, it ensures a stable placement on the head of the stapes and, on the other hand, it harmonizes contact pressure. The mCLIP offers you intraoperative flexibility through its symmetrical clip design and the bendable headplate and shaft. Thanks to the generous recesses in the headplate, you always have a clear view of the coupling structure and the even weight distribution ensures easy handling.

- Stable placement with harmonized contact pressure
- Intraoperative stability and flexibility
- Complete view of the coupling point
- Simple handling

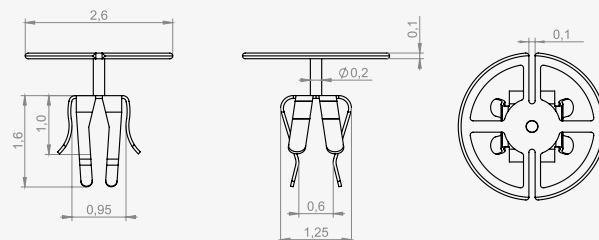


Article number	Functional length (FL) in mm
58111	0.75
58113	1.00
58115	1.25
58117	1.50
58119	1.75
58121	2.00
58123	2.25
58125	2.50
58127	3.00
58129	3.50



Technical Data

Weight: Approx. 1.4-2.5 mg, depending on length
MRI-conditional up to 7.0 Tesla
Material: Medical-grade titanium



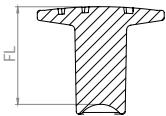
Partial Prostheses Sizer Kit

With the partial prostheses Sizer Kit for our partial prostheses you can easily measure the distance between the head of the stapes and the eardrum to determine the functional length of the appropriate implant. When calculating the length, consider the graft (e.g. cartilage) that will be placed between the headplate and the eardrum (we recommend a thickness of 0.5 mm). The partial prostheses Sizer Kit contains 5 sterile polypropylene sizers of differing lengths. The sizers are arranged lengthwise and are intuitive to use. They are easy to remove from the box.

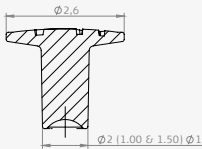
- Easily-removed from the box
- Comfortable handling thanks to balanced geometry
- Clearly visible in the middle ear



Article number	Functional length (FL) in mm
58379	1.00
	1.50
	2.00
	2.50
	3.50



Technical Data





Total Prostheses

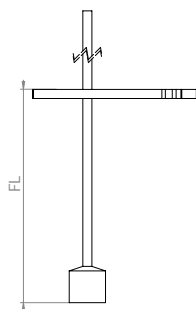
mXACT PRO Total Prosthesis Kit

With the mXACT PRO total prosthesis kit, you can easily and precisely set the appropriate implant length within the red packaging— there are no pre-set increments and no extra tools needed. The cannulated footing and balanced weight distribution allow stable placement on the stapes footplate. Sterile sizers of different lengths are included in the same kit as the implant and can be easily removed to take intraoperative measurements.

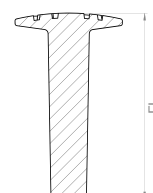
- Increment-free, easy, and exact adjustment of the implant length from a functional length of 3.0 to 7.0 mm
- Reduced logistical effort: only one kit for all lengths
- Stable placement on the stapes footplate thanks to the cannulated footing
- Easy-to-remove sizer



Article number	Functional length (FL) in mm
58498	3.00-7.00

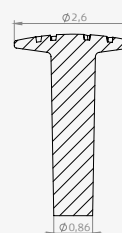
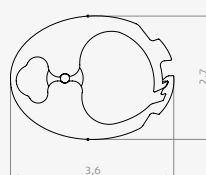
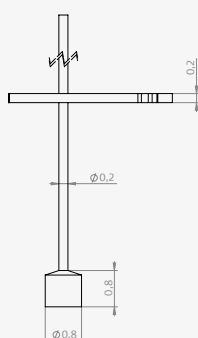


Article number	Functional length (FL) in mm
58498	3.00
	3.50
	4.00
	4.50
	5.00
	6.00
	7.00



Technical Data

Weight: Approx. 4.5-4.9 mg, depending on length
 MRI-conditional up to 7.0 Tesla
 Implant Material: Medical-grade titanium
 Sizer Material: Polypropylene



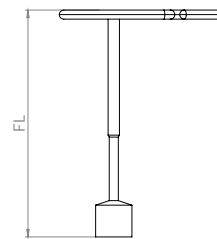
mXACT Total Prosthesis Offcenter

The mXACT total prosthesis's cannulated footing and the resulting adhesion increase the stability of the implant on the stapes footplate. The cylindrical shaft is reinforced near the headplate (Ø 0.25 mm) to prevent unintentional bending. In the coupling structure, on the other hand, the shaft becomes thinner (Ø 0.2 mm), providing a defined bending range. The headplate and shaft of the mXACT total prosthesis are just as bendable as our other tympanoplasty prostheses, and the headplate has recesses for a good view of the stapes. The even weight distribution ensures easy handling.



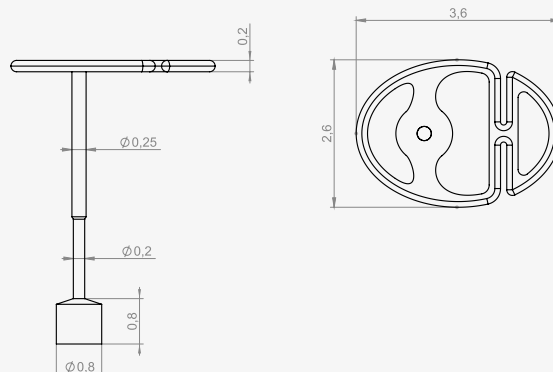
- Stable placement on the stapes footplate
- Optimized shaft with 2 diameters
- Intraoperative flexibility and complete visibility of the coupling structure
- Simple handling

Article number	Functional length (FL) in mm	Article number	Functional length (FL) in mm
58055	3.00	58069	4.75
58057	3.25	58071	5.00
58059	3.50	58075	5.50
58061	3.75	58077	6.00
58063	4.00	58079	6.50
58065	4.25	58081	7.00
58067	4.50		



Technical Data

Weight: Approx. 4.0-5.5 mg, depending on length
MRI-conditional up to 7.0 Tesla
Material: Medical-grade titanium



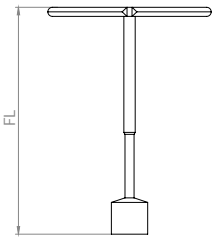
mXACT Total Prosthesis Center

The center-aligned mXACT total prosthesis offers the same advantages and features as its off-center counterpart. Depending on the patient's anatomy and your preferences, both variants are available for complete ossicular reconstruction.

- Stable placement on the stapes footplate
- Optimized shaft with 2 diameters
- Intraoperative flexibility and complete visibility of the coupling structure
- Simple handling

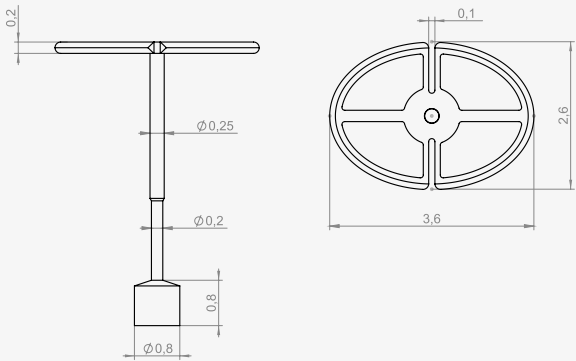


Article number	Functional length (FL) in mm	Article number	Functional length (FL) in mm
58083	3.00	58097	4.75
58085	3.25	58099	5.00
58087	3.50	58103	5.50
58089	3.75	58105	6.00
58091	4.00	58107	6.50
58093	4.25	58109	7.00
58095	4.50		



Technical Data

Weight: Approx. 3.5-4.5 mg, depending on length
 MRI-conditional up to 7.0 Tesla
 Material: Medical-grade titanium



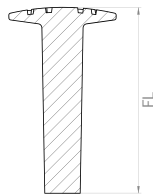
Total Prostheses Sizer Kit

The total prostheses Sizer Kit for our total prostheses makes it easy to measure the distance between the stapes footplate and the eardrum, and thus determine the functional length of the appropriate implant. When calculating the length, consider the graft (e.g. cartilage) that will be placed between the headplate and the eardrum (we recommend a thickness of 0.5 mm). The total Prostheses sizer Kit contains 7 different lengths of sterile polypropylene sizers. The sizers are arranged lengthwise and are intuitive to use. They are easy to remove from the box.

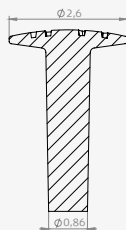


- Easily-removed from the box
- Comfortable handling thanks to balanced geometry
- Clearly visible in the middle ear

Article number	Functional length (FL) in mm
58380	3.00
	3.50
	4.00
	4.50
	5.00
	6.00
	7.00



Technical Data









Why Choose MED-EL's Passive Middle Ear Implants?

Because we offer the world's most comprehensive portfolio of implantable hearing solutions and can therefore support you effectively in your day-to-day surgical work. We are always happy to advise you on all our hearing solutions in person—and work with you to ensure that your patients can overcome hearing loss as a barrier to communication and quality of life.



Stapes Protheses

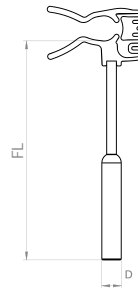
mFIX Stapes Prosthesis

The mFIX stapes prosthesis clip has several advantages: Its design is space-saving, which means there is enough room between the implant and the posterior auditory canal wall. It is also easy to slide onto the incus, without the need for crimping. The mFIX also offers intraoperative flexibility with its bendable shaft, a smooth transition between the piston and shaft, and even weight distribution for both stability and easy handling.

- Crimp-free coupling with clip.
- Space-saving clip design
- Intraoperative flexibility and clear view of the stapes
- Simple handling

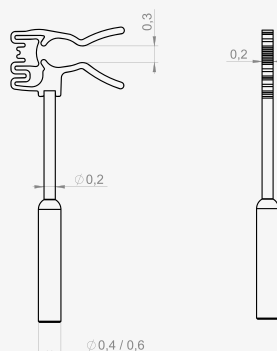


Article number	Piston diameter (D) x functional length (FL) in mm	Article number	Piston diameter (D) x functional length (FL) in mm
58273	Ø 0.4 x 3.50	58309	Ø 0.6 x 3.50
58275	Ø 0.4 x 3.75	58311	Ø 0.6 x 3.75
58277	Ø 0.4 x 4.00	58313	Ø 0.6 x 4.00
58279	Ø 0.4 x 4.25	58315	Ø 0.6 x 4.25
58281	Ø 0.4 x 4.50	58317	Ø 0.6 x 4.50
58283	Ø 0.4 x 4.75	58319	Ø 0.6 x 4.75
58285	Ø 0.4 x 5.00	58321	Ø 0.6 x 5.00
58287	Ø 0.4 x 5.25	58323	Ø 0.6 x 5.25
58289	Ø 0.4 x 5.50	58325	Ø 0.6 x 5.50



Technical Data

Weight: Approx. 1.5-3.5 mg, depending on length
MRI-conditional up to 7.0 Tesla
Material: Medical-grade titanium



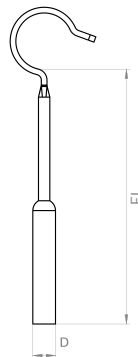
mLOOP Stapes Prosthesis

The mLOOP is available in lengths of up to 10 mm and is therefore ideal for attaching to both the incus and the malleus. The mLOOP also offers intra-operative flexibility with its offset band loop and bendable shaft as well as smooth transition between the piston and shaft. The balanced weight distribution means both stability and easy handling.

- Implant lengths of up to 10 mm
- Intraoperative flexibility and clear view of the stapes
- Simple handling

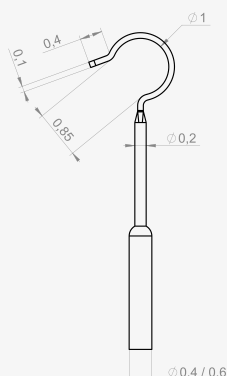


Article number	Piston diameter (D) x functional length (FL) in mm	Article number	Piston diameter (D) x functional length (FL) in mm
58183	Ø 0.4 x 3.50	58219	Ø 0.6 x 3.50
58185	Ø 0.4 x 3.75	58221	Ø 0.6 x 3.75
58187	Ø 0.4 x 4.00	58223	Ø 0.6 x 4.00
58189	Ø 0.4 x 4.25	58225	Ø 0.6 x 4.25
58191	Ø 0.4 x 4.50	58227	Ø 0.6 x 4.50
58193	Ø 0.4 x 4.75	58229	Ø 0.6 x 4.75
58195	Ø 0.4 x 5.00	58231	Ø 0.6 x 5.00
58197	Ø 0.4 x 5.25	58233	Ø 0.6 x 5.25
58199	Ø 0.4 x 5.50	58235	Ø 0.6 x 5.50
58433	Ø 0.4 x 6.00	58443	Ø 0.6 x 6.00
58435	Ø 0.4 x 7.00	58445	Ø 0.6 x 7.00
58437	Ø 0.4 x 8.00	58447	Ø 0.6 x 8.00
58439	Ø 0.4 x 9.00	58449	Ø 0.6 x 9.00
58441	Ø 0.4 x 10.00	58451	Ø 0.6 x 10.00



Technical Data

Weight: Approx. 1.0-4.0 mg, depending on length
MRI-conditional up to 7.0 Tesla
Material: Medical-grade titanium



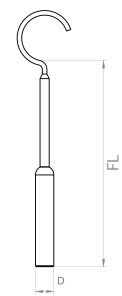
mZAM Stapes Prosthesis

With its extremely slim design, the mZAM stapes prosthesis allows you the best possible view when placing the implant. It also offers intraoperative flexibility with its offset band loop and bendable shaft as well as smooth transition between the piston and shaft. The balanced weight distribution means both stability and easy handling.

- Best possible view of the stapes footplate
- Intraoperative flexibility
- Simple handling

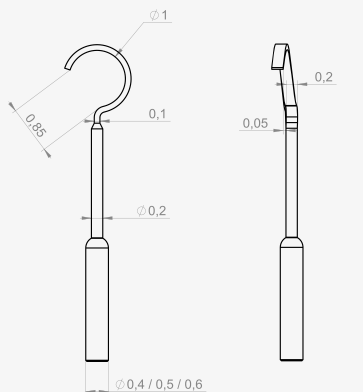


Article number	Piston diameter (D) x functional length (FL) in mm	Article number	Piston diameter (D) x functional length (FL) in mm	Article number	Piston diameter (D) x functional length (FL) in mm
58237	Ø 0.4 x 3.50	58453	Ø 0.5 x 3.50	58255	Ø 0.6 x 3.50
58239	Ø 0.4 x 3.75	58455	Ø 0.5 x 3.75	58257	Ø 0.6 x 3.75
58241	Ø 0.4 x 4.00	58457	Ø 0.5 x 4.00	58259	Ø 0.6 x 4.00
58243	Ø 0.4 x 4.25	58459	Ø 0.5 x 4.25	58261	Ø 0.6 x 4.25
58245	Ø 0.4 x 4.50	58461	Ø 0.5 x 4.50	58263	Ø 0.6 x 4.50
58247	Ø 0.4 x 4.75	58463	Ø 0.5 x 4.75	58265	Ø 0.6 x 4.75
58249	Ø 0.4 x 5.00	58465	Ø 0.5 x 5.00	58267	Ø 0.6 x 5.00
58251	Ø 0.4 x 5.25	58467	Ø 0.5 x 5.25	58269	Ø 0.6 x 5.25
58253	Ø 0.4 x 5.50	58469	Ø 0.5 x 5.50	58271	Ø 0.6 x 5.50



Technical Data

Weight: Approx. 1.0-3.5 mg, depending on length
 MRI-conditional up to 7.0 Tesla
 Material: Medical-grade titanium



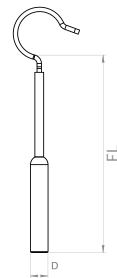
mAXIS Stapes Prosthesis

Compared to our other stapes prostheses, the loop of the mAXIS is wider, which reduces pressure on the incus. At the same time, perforations ensure gentle crimping. The mAXIS also offers intraoperative flexibility with its offset strap loop and bendable shaft, smooth transition between the piston and shaft and even weight distribution for both stability and easy handling.

- Reduced pressure on the incus and gentle crimping
- Intraoperative flexibility with clear view of the stapes
- Simple handling

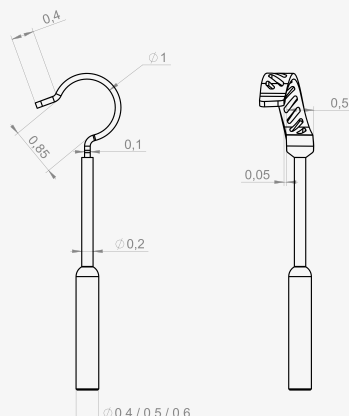


Article number	Piston diameter (D) x functional length (FL) in mm	Article number	Piston diameter (D) x functional length (FL) in mm	Article number	Piston diameter (D) x functional length (FL) in mm
58131	Ø 0.4 x 3.50	58149	Ø 0.5 x 3.50	58165	Ø 0.6 x 3.50
58133	Ø 0.4 x 3.75	58416	Ø 0.5 x 3.75	58167	Ø 0.6 x 3.75
58135	Ø 0.4 x 4.00	58151	Ø 0.5 x 4.00	58169	Ø 0.6 x 4.00
58137	Ø 0.4 x 4.25	58153	Ø 0.5 x 4.25	58171	Ø 0.6 x 4.25
58139	Ø 0.4 x 4.50	58155	Ø 0.5 x 4.50	58173	Ø 0.6 x 4.50
58141	Ø 0.4 x 4.75	58157	Ø 0.5 x 4.75	58175	Ø 0.6 x 4.75
58143	Ø 0.4 x 5.00	58159	Ø 0.5 x 5.00	58177	Ø 0.6 x 5.00
58145	Ø 0.4 x 5.25	58161	Ø 0.5 x 5.25	58179	Ø 0.6 x 5.25
58147	Ø 0.4 x 5.50	58163	Ø 0.5 x 5.50	58181	Ø 0.6 x 5.50



Technical Data

Weight: Approx. 1.0-3.5 mg, depending on length
MRI-conditional up to 7.0 Tesla
Material: Medical-grade titanium







Get In Touch

Where to Order

To order our passive middle ear implants, please contact your local MED-EL representative. Let us know if you have any questions! We look forward to hearing from you.

Want to know how the length adjustment is done? Watch the video on our website: medel.pro/products/passive-middle-ear-implants Or scan the code with your smartphone.



medel.com

MED-EL Offices Worldwide

AMERICAS

Argentina

medel@medel.com.ar

Brazil

office@br.medel.com

Canada

officecanada@medel.com

Mexico

office-mexico@medel.com

United States

implants@medelus.com

ASIA PACIFIC

Australia

office@medel.com.au

China

office@medel.net.cn

Hong Kong

office@hk.medel.com

India

implants@medel.in

Indonesia

office@id.medel.com

Japan

office-japan@medel.com

Malaysia

office@my.medel.com

Philippines

office@ph.medel.com

Singapore

office@sg.medel.com

South Korea

office@kr.medel.com

Thailand

office@th.medel.com

Vietnam

office@vn.medel.com

EMEA

Austria

office@at.medel.com

Belgium

office@be.medel.com

Denmark

nordic@medel.com

Finland

office@fi.medel.com

France

office@fr.medel.com

Germany

office@medel.de

Italy

ufficio.italia@medel.com

Netherlands

office@nl.medel.com

Norway

norge@medel.com

Portugal

office@pt.medel.com

South Africa

customerserviceZA@medel.com

Spain

office@es.medel.com

Sweden

nordic@medel.com

Switzerland

office-ch@medel.com

Turkey

medelturkey@medel.com

United Arab Emirates

office@ae.medel.com

United Kingdom

customerservice@medel.co.uk

M00130-15.1