



## Arthroscopic Resection

A flexible, adaptive system with proven dependability, performance, and versatility for a variety of power arthroscopy procedures.



**ADVANTAGE®**  
CONSOLE



**ERGO™**  
HANDPIECE



**10K®**  
PUMP



**THORNE™**  
5/32" CHUCK



To learn more about these and other innovative products, call **800-237-0169** or visit **ConMed.com**.

# Superior Design with Multiple Advantages



## SHOULDER AND KNEE

---

### Sterling® Arthroscopy Blades

This extensive product line features the remarkably aggressive Great White blade and patented XtraSharp™ technology.

### Dual-Purpose Arthroscopy Blades and Burs

Comprehensive flexibility allows for both soft tissue and bone resection in a single blade. Less time spent changing blades makes for quicker procedures. Why purchase two when one will do?

### Arthroscopy Burs

These burs offer speeds as high as 12,000 rpm in forward and reverse. The bur sheath allows any standard bur to become unhooded. Choose from a wide selection of shapes and sizes.

### Merlin® Bendable and Pre-bent Blades

Customized bends allow access to hard-to-reach places. Pre-bent, non-bendable blades maximize blade rigidity with a bend. Merlin blades can be bent and re-bent several times during a procedure.

### ReAct™ Reciprocating Action Shaver Blades

Patented sharp and aggressive design produces reciprocating action and reduced occurrence of clogging.

## HIP

---

### Signature Series™ Blades and Burs

The first of their kind, the Signature Series hip blades and burs are designed exclusively for use in the hip joint. Durable materials and procedure specific designs enable more effective reshaping of the hip anatomy. Pre-bent burs enable improved access & more precise resection.

### Extended Length Blades and Burs

With patented XtraSharp™ and Merlin® technology, these blades and burs were designed for resection of soft tissue and bone in deep, narrow joint spaces such as the hip. Concave and convex window configurations are available.

## SMALL JOINT

---

### Small Joint Arthroscopy Blades

For small joint procedures with the APEX® and Advantage® handpiece families.



## Great White®

The ultimate blade for aggressive soft tissue resection, including removal of the ACL stump.



## Gator®

Ideal for aggressive meniscal trimming, joint debridement, plica and synovium removal.



### Sterling Arthroscopy Blades

3.5mm	9399A
4.2mm	9299A
4.8mm	9297A
5.5mm	9599A

### Merlin® Bendable and Pre-bent Blades

3.7mm 15° Pre-bent, Bendable	37GRW-ME-PB
3.7mm Bendable to 30°	37GRW-ME-ZZ
4.2mm 15° Pre-bent, Bendable	C9299P
4.2mm 15° Prebent, Non-bendable	C9299M

### React™ Reciprocating Action Shaver Blades

3.5mm	35GRW-RA-ZZ
4.2mm	42GRW-RA-ZZ

### Signature Series Blades

4.2mm Straight Blade	HPS-C001
4.2mm Pre-bent, Convex	HPS-CB01
4.2mm Pre-bent, Concave	HPS-CB02

### Extended Length Blades

4.2mm	EL9299
4.2mm 15° Pre-bent, Convex	EL9299D
4.2mm 15° Pre-bent, Concave	EL9299U

### Sterling Arthroscopy Blades

3.5mm	C9264
4.2mm	9263A
4.8mm	C9262
5.5mm	9260A

### Merlin® Bendable and Pre-bent Blades

3.7mm 15° Pre-bent, Bendable	37GTR-ME-PB
3.7mm Bendable to 30°	P9365
4.2mm Bendable to 30°	P9366
4.2mm 15° Pre-bent, Bendable	C9266
4.2mm 15° Pre-bent, Non-bendable	C9266M
4.8mm Bendable to 20°	P9367

### React™ Reciprocating Action Shaver Blades

3.5mm	35GTR-RA-ZZ
4.2mm	42GTR-RA-ZZ

### Signature Series Blades

4.2mm Straight Blade	HPS-C002
4.2mm Pre-bent, Convex	HPS-CB05
4.2mm Pre-bent, Concave	HPS-CB06

### Extended Length Blades

4.2mm	EL9263A
5.5mm	EL9260A

### Small Joint Arthroscopy Blades

2.0mm	C9960A
2.9mm	C9961A

## SHOULDER AND KNEE

All blades and burs have a 13cm working length and run at 2,500rpm oscillate and 6,000rpm max. Arthroscopy burs and the dual-purpose Lightning blades run at 12,000rpm max.

### Sterling Arthroscopy Blades

### Dual-Purpose Arthroscopy Blades and Burs

### Arthroscopy Burs

### Merlin® Bendable and Pre-bent Blades

### React™ Reciprocating Action Shaver Blades

## HIP

All blades and burs have a 19cm working length. Blades run at 2,500rpm oscillate and 6,000rpm max. Burs run at 12,000rpm max.

### Signature Series Blades and Burs

### Extended Length Blades and Burs

## SMALL JOINT

All blades have a 8cm working length and run at 2,500rpm oscillate and 6,000rpm max.

### Small Joint Arthroscopy Blades



BLADE

## Full-Radius Resector

Excellent for all general soft tissue debridement applications.



### Sterling Arthroscopy Blades

3.5mm	C9248
4.2mm	9247A
4.8mm	C9245
5.5mm	9246A

### Merlin® Bendable and Pre-bent Blades

3.7mm 15° Pre-bent, Bendable	37FRR-ME-PB
3.7mm Bendable to 30°	P9375
4.2mm Bendable to 30°	P9376
4.2mm 15° Pre-bent, Bendable	C9241
4.2mm 15° Pre-bent, Non-bendable	C9241M
4.8mm Bendable to 20°	P9377

### React™ Reciprocating Action Shaver Blades

3.5mm	35FRR-RA-ZZ
4.2mm	42FRR-RA-ZZ

### Signature Series Blades

4.2mm Straight Blade	HPS-C003
4.2mm Pre-bent, Convex	HPS-CB03
4.2mm Pre-bent, Concave	HPS-CB04

### Extended Length Blades

4.2mm 15° Pre-bent, Convex, Bendable to 30°	EL9247D
4.2mm 15° Pre-bent, Concave, Bendable to 30°	EL9247U

### Small Joint Arthroscopy Blades

2.0mm	C9943A
2.9mm	C9944A



BLADE

## Tiger®

Excellent for all general soft tissue debridement, especially meniscectomy, and chondroplasty.



### Sterling Arthroscopy Blades

3.5mm	C9240
4.2mm	C9242

### React™ Reciprocating Action Shaver Blades

3.5mm	35TGR-RA-ZZ
4.2mm	42TGR-RA-ZZ

### Merlin® Bendable and Pre-bent Blades

3.7mm 15° Pre-bent, Bendable	37TGR-ME-PB
4.2mm 15° Pre-bent, Non-bendable	C9244M



BLADE

## Cuda®

All-purpose, aggressive blade. Ideal for extensive soft tissue removal.

### Sterling Arthroscopy Blades

3.5mm	C9253
4.2mm	C9254
4.8mm	C9258
5.5mm	C9255

### Merlin® Bendable and Pre-bent Blades

3.7mm 15° Pre-bent, Bendable	37CUD-ME-PB
3.7mm Bendable to 30°	P9355
4.2mm Bendable to 30°	P9356
4.2mm 15° Pre-bent, Bendable	C9256
4.2mm 15° Pre-bent, Non-bendable	C9256M
4.8mm Bendable to 20°	P9357

### React™ Reciprocating Action Shaver Blades

3.5mm	35CUD-RA-ZZ
4.2mm	42CUD-RA-ZZ

### Extended Length Blades

4.2mm 15° Bendable Blade	EL9356
--------------------------	--------

### Small Joint Arthroscopy Blades

2.0mm	C9951A
2.9mm	C9952A



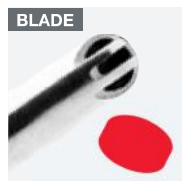
BLADE

## Meniscus Cutter

Useful for all meniscal trimming and joint debridement of the patella and trochlear chondromalacia.

### Sterling Arthroscopy Blades

3.5mm	C9760
4.2mm	9761A
5.5mm	C9762



BLADE

## Slotted Whisker

Non-aggressive, for debridement of the fine synovium, fatty tissue and articulating surfaces.

### Sterling Arthroscopy Blades

4.2mm	C9274
5.5mm	C9275

**BLADE****Dragon® End Cutter**

Multi-purpose blade ideal for tough tissue resection.

**Sterling Arthroscopy Blades**

3.5mm	C9290
4.2mm	C9291
5.5mm	C9292

**BLADE****End Cutter**

Useful for all general debridement applications.

**Sterling Arthroscopy Blades**

3.5mm	C9283
4.2mm	C9284

**DUAL****Ultracut®**

Excellent for general debridement applications including soft tissue and bone resection.

**Dual-purpose Arthroscopy Blades**

3.5mm	35ULT-ST-ZZ
4.2mm	C9405A
4.2mm 15° Pre-bent	42ULT-ZZ-MT
4.2mm Liberator Plus	42ULT-LB-ST

**Signature Series Blades**

4.2mm Straight Blade	HPS-C004
4.2mm Pre-bent, Convex	HPS-CB07
4.2mm Pre-bent, Concave	HPS-CB08

**Extended Length Blades**

4.2mm	EL9405
4.2mm Liberator Plus	42ULT-LB-EL

**DUAL****Mako™**

Ideal for procedures such as subacromial decompression, acromioplasty and other procedures where soft tissue and/or bone cutting is desired.

**Dual-purpose Arthroscopy Blades**

4.2mm	9298A
5.5mm	C9298A

**DUAL****Lightning®**

Ideal for procedures such as subacromial decompression and acromioplasty.

**Dual-purpose Arthroscopy Burs**

4.5mm	H9133
-------	-------

**BUR****Oval Bur**

Ideal for resecting bone and cartilage during acromioplasty and notchplasty.

**Arthroscopy Burs**

4.0mm	H9101
4.0mm Reduced Hood	H9101RH
4.0mm Southpaw	H9101LH
4.0mm Fully Hooded	40VAL-ST-FH
5.0mm Reduced Hood	H9103RH
6.0mm	H9102
6.0mm Southpaw	H9102LH

**Signature Series Burs**

4.0mm Straight	HPS-H002
4.5mm Pre-bent	HPS-HB03
6.0mm Straight	HPS-H012

**Extended Length Burs**

4.0mm	EL9101
6.0mm	60VAL-EL-ST
6.0mm Reduced Hood	60VAL-EL-RH
6.0mm Precision Hood	60VAL-ST-PH

**BUR****Spherical Bur**

Useful for bony site preparation, cartilage and osteochondral debridement.

**Arthroscopy Burs**

3.5mm	H9110
4.5mm	H9111
5.5mm	H9112
5.5mm Reduced Hood	H9112RH

**Signature Series Burs**

4.5mm Pre-bent	HPS-HB01
4.5mm Straight	HPS-H001
5.5mm Straight	HPS-H011

**Extended Length Burs**

4.5mm Reduced Hood	EL9111RH
5.5mm	55SPH-EL-ST
5.5mm Reduced Hood	55SPH-EL-RH

**Small Joint Arthroscopy Blades**

2.9mm	C9911A
-------	--------

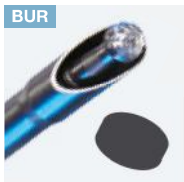
**BUR****Pear Bur**

New design for better access in the hip capsule provides a combination of effective end cutting and relieved side cutting.

**Signature Series Burs**

4.0mm Straight	HPS-H003
6.0mm Straight	HPS-H013





### Polishing Bur

Excellent for finishing effects due to its non-aggressive nature.



### Vortex® Router

Ultra-aggressive. Ideal for extensive bone and cartilage removal in the subacromial space.

#### Signature Series Burs

4.5mm Straight	HPS-H004
4.5mm Pre-bent	HPS-HB02
5.5mm Straight	HPS-H014



### Cyclone®

Useful for aggressive bony site preparation, cartilage and osteochondral debridement, and osteophyte resection.

#### Arthroscopy Burs

4.5mm	H9131
4.5mm Unhooded	H9134
6.0 mm	H9132

#### Signature Series Burs

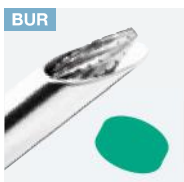
4.0mm Straight	HPS-H005
6.0mm Straight	HPS-H015

#### Small Joint Arthroscopy Blades

2.9mm	29VTX-SJ-ZZ
3.5mm	35VTX-SJ-ZZ

#### Arthroscopy Burs

4.5mm	H9118
5.5mm	H9119



### Tapered Bur

Excellent for shaping and resecting bone and cartilage during acromioplasty and notchplasty.



### Bur Sheath

Use of the bur sheath allows the user to resect bone without a hood around the bur head.

#### Arthroscopy Burs

4.0mm	H9121
4.0mm Reduced Hood	H9121RH
6.0mm	H9122

#### Arthroscopy Bur Sheaths

4.0/4.5mm	H9002
5.5/6.0mm	H9000

#### Signature Series Bur Sheaths

4.0/4.5mm	HPS-S001
5.5/6.0mm	HPS-S011

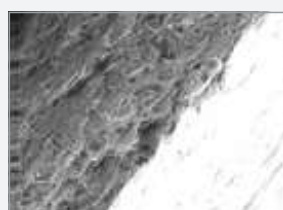
## XtraSharp™ Manufacturing Gives These Blades an Edge

The XtraSharp process is a patented manufacturing technique that uses ECG (Electro-Chemical Grinding) instead of EDM (Electrical Discharge Machining). This results in a sharper cutting edge that produces cleaner cuts and less tearing with better visualization. The smoother tool surfaces also create clean, distinct tissue bites with fewer semi-attached pieces. Tissue moves more easily away from the cutting zone for less clogging.



#### ConMed Linvatec

Cleaner edge with ECG.



#### Competitor 1

EDM manufacturing results in rougher edges.



#### Competitor 2



## Arthroscopic Resection

525 French Road  
Utica, NY 13502

Local 727-392-6464  
Toll Free 800-237-0169

ConMed.com  
customer\_service@linvatec.com