



TYPE A Model A33-CW description

Document Nr : VOR/CON/09/008D(1/2) UK

Jan 19 2015

The « TYPE A » ref : A33-CW package is designed and tested in accordance with IAEA regulations for the safe transport of radioactive material TS-R-1 (ST-1 as amended in 2003) and the ADR rules (chapter 6). [1]
This model is designed for transport (UN2915 - UN2908) mainly for liquid in 15ml vials. (10ml max)

The following paragraphs were taken into account during the tests [2]:

- General regulations concerning all packing and packages. (§ 606 to 616)
- Additional regulations concerning air transport. (§ 617 à 619)
- Regulations concerning “type A” packages.. (§ 633 à 649)
- Proof of compliance with the regulations. (§ 701 a 702)
- Package tests. (§ 713 à 717 ; 719 à 725)
- Succès criteria. (§ 646)

Description

1. Packing

- *External material* *Laminated wood with steel reinforced corners and edges*
- *Weight* *7.0kg*
- *Dimensions* *28cm X 28cm X 38cm(+3mm) (front, side, height)*
- *Internal material* *LD 30 high-density polyethylene foam (30kg/m3)*

2. Protective container

- *External material* *electro-polished 304 stainless steel*
- *Weight* *10.2kg (can vari of +-2.5% following options)*
- *Dimensions* *$D_{body}=102mm$ $D_{handle}=119mm$ $H=194mm$*
- *Internal material* *Lead: minimum thickness 32mm*

Maintenance

- Visual inspection should be carried out before each usage
- The seals must be controlled before each usage.
- If it falls more than 1.5m, the packing must be replaced.
- The internal foam should be replaced if it exceeds 4mm in thickness.
- The container should be repaired or replaced in the event of a mechanical defect in the closure system or hermeticity, be it the welds or the seals.

Transport

The package to be transported by road is designed to be stacked as long as the corners are superposed, up to 4 units high, subject to sufficient headroom. For this purpose, straps can be placed through the handles on the top of the packing

Notice

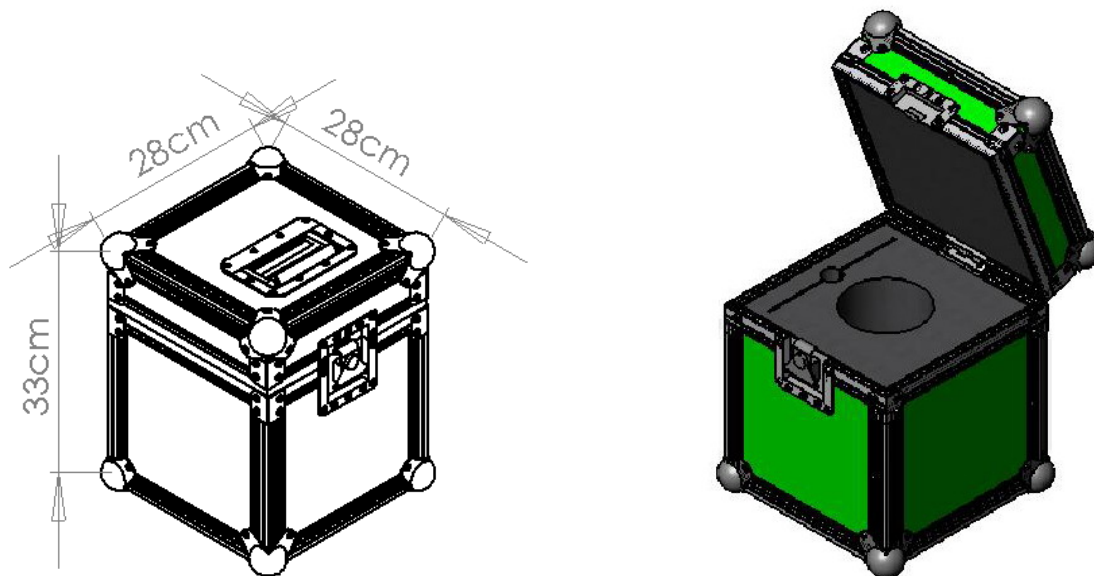
This certificate does not exempt the carrier from observing the regulations laid down by the authorities of countries through or to whose territory the package is to be transported.

Restriction

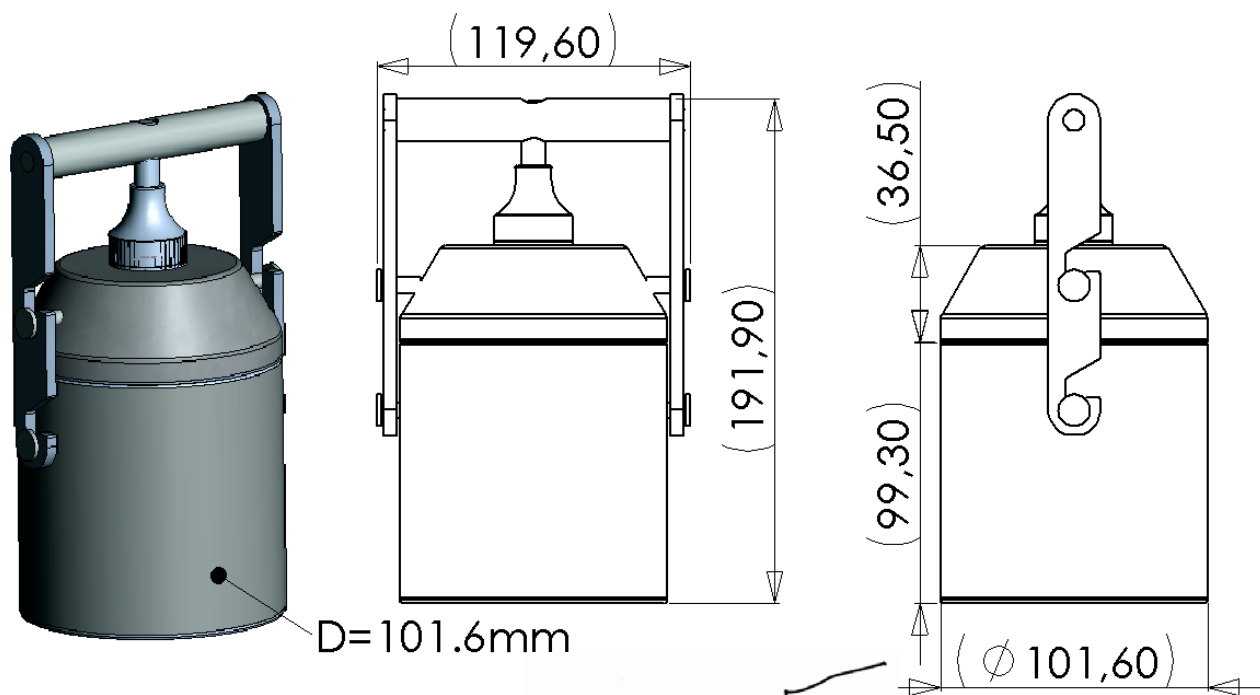
The package is designed to be used in temperatures greater than -40°C and below 70°C

Drawings

1. Packing



2. Protective container (in mm)



Marc Daman for Vortal SPRL

Validity : Jan 2020 or IAEA regulations update

[1] Full documentation with list of the tests available on request at info@Vortal.pro

[2] Tests made by “service de radioprotection de l’UCL” n°2 ch du Cyclotron B1348 LLN Belgique

[3] ASN/GUIDE/DIT/OI