

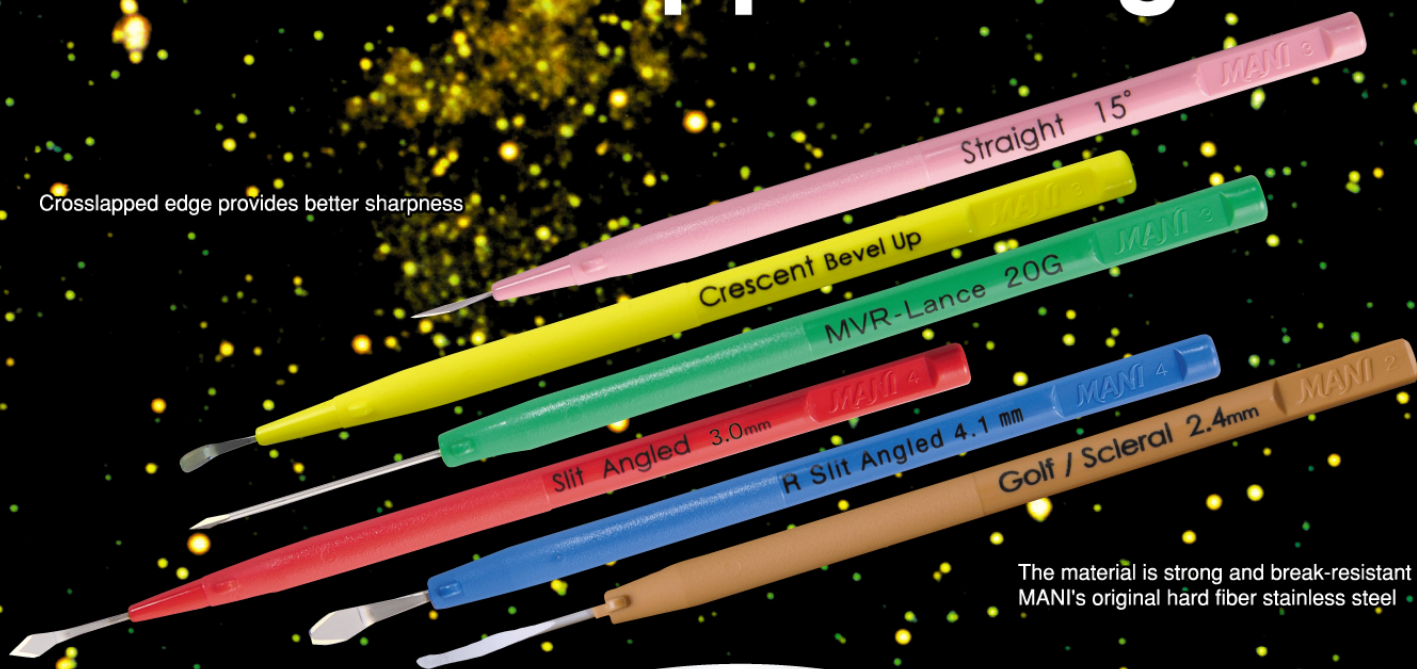


# MANI®

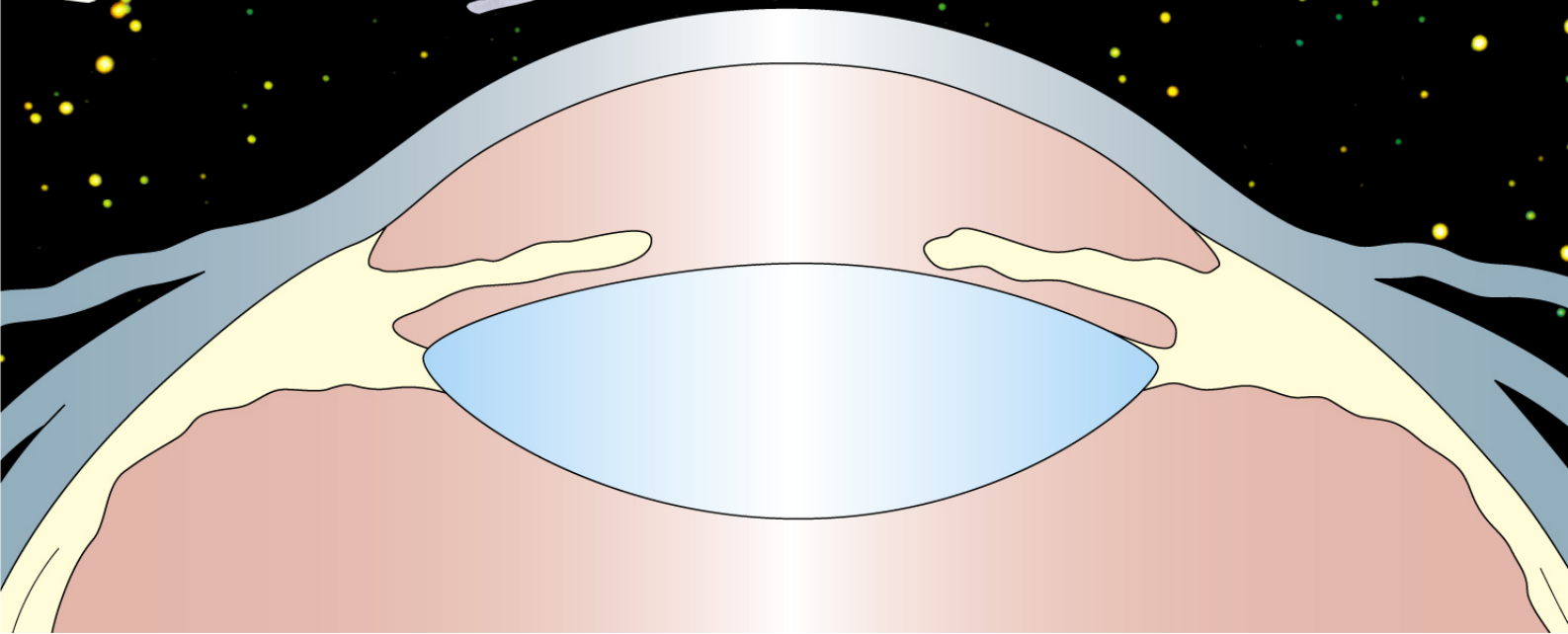
## Ophthalmic Knife

### Crosslapped Edge

Crosslapped edge provides better sharpness



The material is strong and break-resistant  
MANI's original hard fiber stainless steel

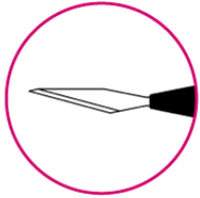




# MANI® Ophthalmic Knife

## Straight Knife

6pcs/box



MST

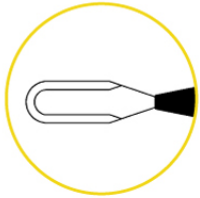


actual size

Product Name	ORDER#
Straight 15.0°	MST 15
Straight 22.5°	MST 22
Straight 30.0°	MST 30
Straight 45.0°	MST 45

## Crescent Knife

Angle = 60.0° 6pcs/box



MCU·MCD·MCS

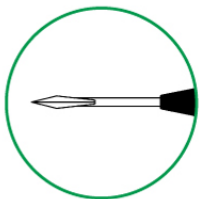


actual size

Product Name ( Blade Width )	ORDER#
Crescent Bevel Up (2.3mm)	MCU 26
Crescent Bevel Up (2.0mm)	MCU 20
Crescent Bevel Down (2.3mm)	MCD 26
Crescent Straight (2.3mm)	MCS 26

## MVR Knife

Angle = 45.0° 6pcs/box



MVR·MPK



actual size

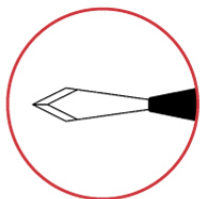
Product Name ( Blade Width )	ORDER#
MVR-Lance 19G (1.5mm)	MVR 19
MVR-Lance 20G (1.2mm)	MVR 20
MVR-Lance 23G (0.9mm)	MVR 23
MVR-Lance 24G (0.8mm)	MVR 24
MVR-Lance 25G* <sup>1</sup> (0.55mm)	MVR 25
MVR-Angled 19G (1.5mm)	MVR 19 A
MVR-Angled 20G (1.2mm)	MVR 20 A
MVR-Angled 21G (1.1mm)	MVR 21 A
MVR-Angled 23G (0.9mm)	MVR 23 A
MVR-Angled 24G (0.8mm)	MVR 24 A
MVR-Angled 23G (0.7mm)	MVR23AD
Port Knife 25G* <sup>2</sup> (0.45mm)	MPK 25

※1.MVR25 is the knife to make infusion port for 25G cannula that enters into sclera, or can be inserted into 23G cannula.  
 ※2.MPK25,Port Knife 25G can be inserted into 25G cannula.

The crosslapped edge made of MANI's original hard fiber stainless steel produces the ultimate in sharpness.

## Slit Knife

Angle = 45.0° 6pcs/box



MSL·MSS



actual size

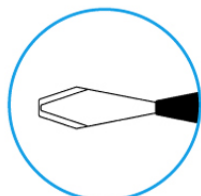
Product Name	ORDER#
Slit Angled 1.0mm	MSL 10
Slit Angled 1.1mm	MSL 11
Slit Angled 1.2mm	MSL 12
Slit Angled 1.3mm	MSL 13
Slit Angled 1.4mm	MSL 14
Slit Angled 1.6mm	MSL 16
Slit Angled 1.8mm	MSL 18
Slit Angled 2.0mm	MSL 20
Slit Angled 2.2mm	MSL 22
Slit Angled 2.3mm	MSL 23
Slit Angled 2.4mm	MSL 24
Slit Angled 2.5mm	MSL 25
Slit Angled 2.65mm	MSL 26
Slit Angled 2.75mm	MSL 27
Slit Angled 2.8mm	MSL 28
Slit Angled 2.9mm	MSL 29
Slit Angled 3.0mm	MSL 30
Slit Angled 3.2mm	MSL 32
Slit Angled 3.5mm	MSL 35
Slit Straight 1.0mm	MSS 10
Slit Straight 2.8mm	MSS 28
Slit Straight 3.0mm	MSS 30

# MANI® Ophthalmic Knife



## R Slit Knife (Implant)

Angle = 45.0° 6pcs/box



MRS

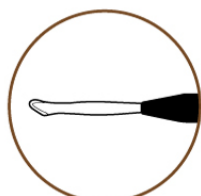


actual size

Product Name	ORDER#
R Slit Angled 2.6mm	MRS 26
R Slit Angled 3.2mm	MRS 32
R Slit Angled 3.5mm	MRS 35
R Slit Angled 3.75mm	MRS 37
R Slit Angled 4.1mm	MRS 41
R Slit Angled 5.2mm	MRS 52
R Slit Angled 5.5mm	MRS 55

## Golf/Scleral Knife

6pcs/box



MGL



actual size

Product Name	ORDER#
Golf/Scleral 2.4mm	M G L 2 4



The crosslapped edge made of MANI's original hard fiber stainless steel produces the ultimate in sharpness.

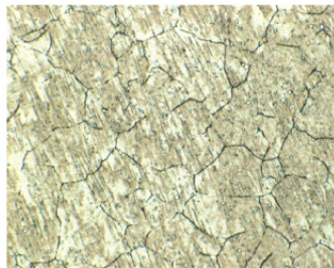
## The details of "Ultimate in Sharpness"



MANI's original hard fiber stainless steel (Austenite Stainless Steel) is a source of strength and which has ensured thin but strong edge. (Edge thickness of crescent knife MANI: 0.14mm Company A : 0.18mm)



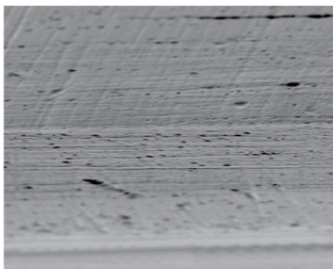
Structure of MANI hard fiber stainless steel



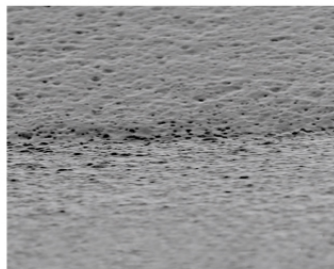
Structure of other's stainless steel



MANI fine-processing technique has created the crosslapped edge, which provides excellent sharpness and consistent quality. (Crosslapped edge : polishing direction is vertical of the edge)



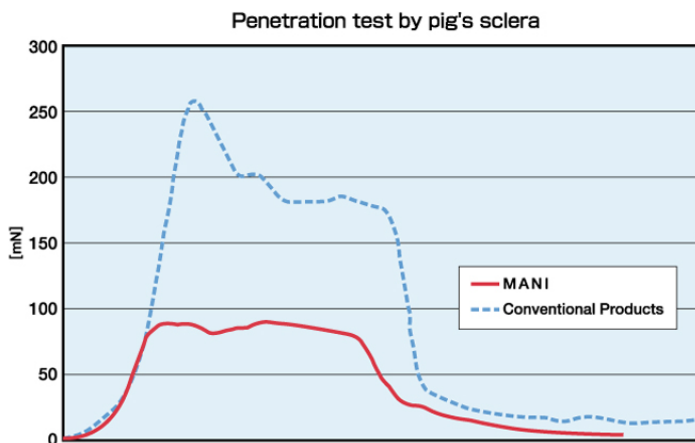
MANI crosslapped edge



Other's edge



MANI has intensively focused on cutting quality in developing our ophthalmic knives. The edge created by the original processing techniques provides "Ultimate in Sharpness" and minimizes tissue damage.





—Wide Variety of Colors and Models—



—Micro Sharpening Technology—  
( Enlarged photo of MANI Ophthalmic Knife )

Do you know this is another MANI?  
MANI surgical needles occupy 70% and above of total production volume in Japan and 90% and above of export sales from Japan.  
In addition, MANI files and reamers occupy 35% and above in the global market.

MANI wishes human good health and contributes to the medical treatment in the world. Instruments of MANI obtain deep trust at medical treatment sites more than 120 countries in the world for over 50 years.

THE BEST QUALITY  
IN THE WORLD,  
TO THE WORLD.

MANI Instruments are distributed to medical field through following channels.

- Excellent Medical wholesalers in Domestic & Foreign market.
- Excellent Export Trading Companies.

<http://www.mani.co.jp> E-mail: [ophthalmic@ms.mani.co.jp](mailto:ophthalmic@ms.mani.co.jp)



▲MANI TAKANEZAWA Facility



▲MANI KIYOHARA Facility

Distributed by



8-3 KIYOHARA INDUSTRIAL PARK, UTSUNOMIYA,  
TOCHIGI, 321-3231, JAPAN  
Phone:+81286677565 Fax:+81286676177

0 00610 (090303)