

## OPHTHALMIC DIAGNOSTIC STRIPS

In Medical Grade Tyvek Pouches

### Schirmer Strips

CE  
2460



Sterile Ophthalmic strips for Dry Eye test

**Packaging:**

Each box contains 100 sterile strips.



**Indications:**

- Used for measurement of tear production
- Gauged for easy reading

### Fluorescein Sodium Ophthalmic Strips

CE  
2460

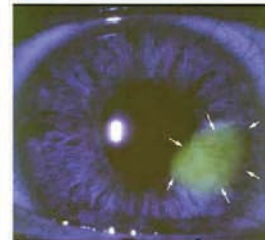


**Composition (per strip):**

Each strip is impregnated with 1.0 mg of Fluorescein Sodium

**Packaging:**

Each box contains 100 sterile strips.



**Indications:**

- For Applanation Tonometry
- For evaluating Contact Lens fitting

### High Molecular Fluorescein Sodium Ophthalmic Strips

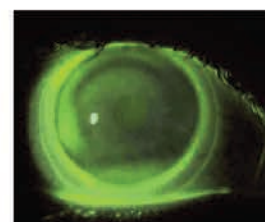


**Composition (per strip):**

Each strip is impregnated with 0.5 mg of high molecular Fluorescein Sodium

**Packaging:**

Each box contains 100 sterile strips.



**Indications:**

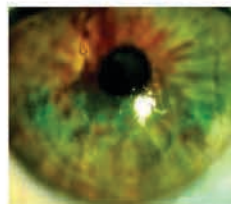
- For Applanation Tonometry
- For evaluating Contact Lens fitting

## Lissamine Green Ophthalmic Strips



**Composition (per strip):**  
Each strip is impregnated with 1.5 mg of Lissamine Green

**Packaging:**  
Each box contains 100 sterile strips.



### Indications:

- To stain preferentially damaged or devitalized cells
- To indicate any dry patches, as well as any mucus-deficient or damaged Corneal Epithelial cells
- It does not stain healthy, proliferating Ocular surface cells and has minimal effect on cell viability

## Rose Bengal Ophthalmic Strips



**Composition (per strip):**  
Each strip is impregnated with 1.5 mg of Rose Bengal

**Packaging:**  
Each box contains 100 sterile strips.



### Indication:

- It stains dead or degenerated Epithelial cells of Cornea & Conjunctiva.

**biotech**  
VISION CARE

**BIOTECH VISION CARE PVT LTD** | Block 1, Abhishree Corporate Park, Opp. Swagat Bunglow BRTS Stop  
Bopal - Ambli Road, Ahmedabad - 380 058 Gujarat India. | Tel: +91 79 66823000

Email: [indiasales@biotechhealthcare.com](mailto:indiasales@biotechhealthcare.com) | [intlsales@biotechhealthcare.com](mailto:intlsales@biotechhealthcare.com) | [www.biotechhealthcare.com](http://www.biotechhealthcare.com)