



MICARE POWERLED

- Aluminum Lamp Housing
- Uniform And Round Focus
- Safety Explosion-Proof
- High Color Rendering Index
- Life Time: $\geq 80,000$ hrs

BRILLIANT BY DESIGN

The MICARE PowerLED Surgical Lighting System Provides Meaningful, Clinician-Inspired Advances To Keep Up With Life In Today's OR.

Through Thoughtful Innovation, This Future-Ready System Offers Superior Optical Performance, Laminar Airflow Design

Full Integration To The OR Environment From Conventional To Theatre Rooms

MICARE PowerLED ensures the clearest and brightest light for surgeons, without distractions from glare.

Allows equipment to be positioned within reach of the surgeon, concealing wires and cables to improve safety and hygiene. Equipment can be easily added, removed and upgraded to meet future requirements.

Thanks to MICARE Power LED High-quality illumination helps to relieve strain, Comfort Light feature, improves visual performance, reduces the sensation of glare and increases the feeling of wakefulness leading to a better working environment

Micare PowerLED E700

double dome Evolving Design, Revolutionary Features

Near Perfect Colour Rendition with
white and yellow LEDS mix
For the best visualisation of tissue during surgery.

Widely Beam Technology From 15CM-35CM
The largest light beams of any current product
with high intensity across the full beam width.

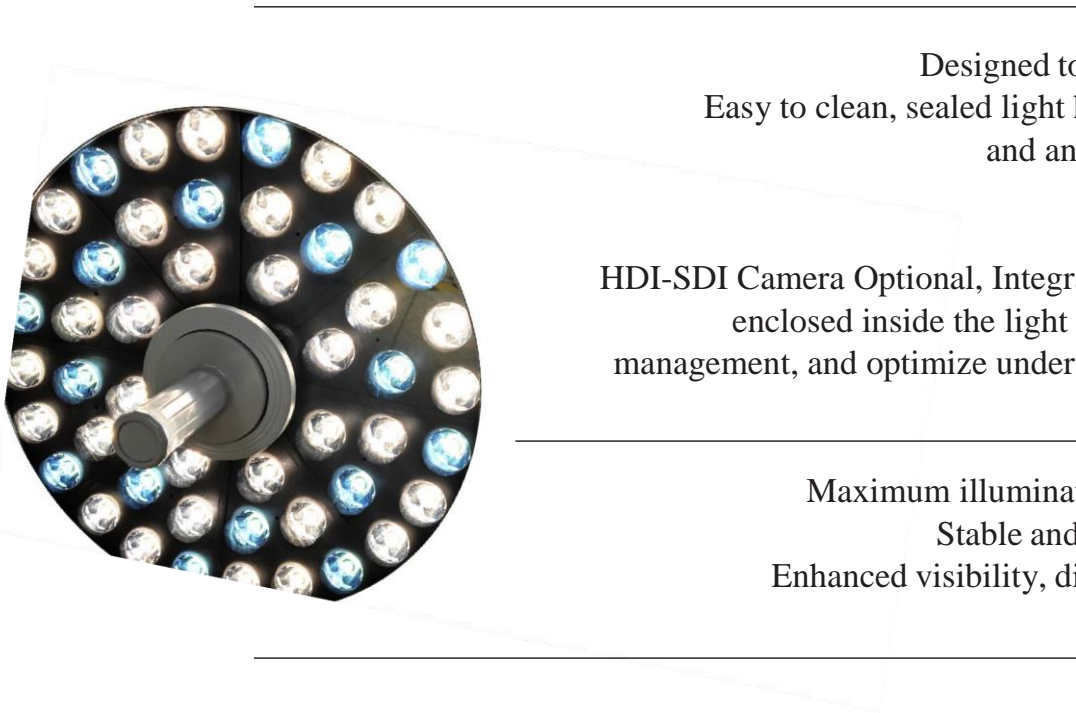
Unique Comfort
A soft illumination of light to reduce eye strain
from high contrasts of light intensity.



Designed to Minimise Infections
Easy to clean, sealed light head, remote controls
and anti-microbial coatings.

HDI-SDI Camera Optional, Integrated cameras are fully
enclosed inside the light head, records for risk,
management, and optimize understanding and learning.

Maximum illumination up to 180,000 lux
Stable and constant illumination
Enhanced visibility, diagnosis and treatment



Endoscopy Mode In Deep Illumination
For Various Operation Environments



Astro Space Design, Working seamlessly
with laminar airflow solutions



Removable Sterilizer Handle Can Be
Easily Replaced by Internal Camera



5.1 INCHES LCD Touch Panel Optional
(OEM With LOGO Print Available)



MICARE PowerLED Model	E700 double dome	E700 + 500	E500 + 500
Voltage	95~245V · 50/60HZ	95~245V · 50/60HZ	95~245V · 50/60HZ
Illuminance at distance of 1 m(LUX)	93,000-180,000/93,000-180,000	93,000-200,000/83,000-180,000	83,000-180,000/83,000-180,000
Brightness Adjustable	10-100%	10-100%	10-100%
Lamp Head Diameter	700MM/700MM	700MM/500MM	500MM/500MM
Quantity Of LEDS	80PCS/80PCS	80PCS/48PCS	48PCS/48PCS
Color Temperature Adjustable	3000-5500K	3000-5500K	3000-5500K
Color rendering index Ra	96	96	96
Color rendering index R9(Red)	98	98	98
Color rendering index R13 (Skin Color)	100	100	100
Light Field Size Adjustable	150-350MM/150-350MM	150-350MM/120-280MM	120-280MM/120-280MM
Total rediant flux density	364W/m2	364W/m2	364W/m2
Endoscopy Mode	YES	YES	YES
Endoscopy Mode LEDS	8PCS/8PCS	8PCS/8PCS	8PCS/8PCS
Illumination For Endo-Mode	10%	15%	18%
LED service life	80,000hrs	80,000hrs	80,000hrs
Main Material	Aluminum	Aluminum	Aluminum
Rotating Angle Of Arm	>540°	>540°	>540°
LED Bulb Power	1w Each Pc	1w Each Pc	1w Each Pc
Input Power	400w	400w	400w
Operating element	Touch Control	Touch Control	Touch Control
Light head protection rating	IP54+FireProof	IP54+FireProof	IP54+FireProof
Depth of illumination L1+12	1400MM	1200MM	1100MM
Packing	3 Wooden Cartons	3 Wooden Cartons	3 Wooden Cartons
LCD Touch Screen	Optional	Optional	Optional
Back Up Battery (4-6hrs)	Optional	Optional	Optional
Shadow Compensation Function	Optional	Optional	Optional
Internal/External Sony Camera(20X)	Optional	Optional	Optional
Monitor With Extra Arm(22 Inches)	Optional	Optional	Optional
LED Bulb Diameter	20MM	20MM	20MM



MICARE PowerLED Model	E700 single dome	E500 single dome
Voltage	95~245V · 50/60HZ	95~245V · 50/60HZ
Illuminance at distance of 1 m(LUX)	93,000-180,000	83,000-180,000
Brightness Adjustable	10-100%	10-100%
Lamp Head Diameter	700MM	500MM
Quantity Of LEDS	80PCS	48PCS
Color Temperature Adjustable	3000-5500K	3000-5500K
Color rendering index Ra	96	96
Color rendering index R9(Red)	98	98
Color rendering index R13 (Skin color)	100	100
Light Field Size Adjustable	150-350MM	120-280MM
Total rediant flux density	364W/m2	364W/m2
Endoscopy Mode	YES	YES
Endoscopy Mode LEDS	8PCS	8PCS
Illumination For Endo-Mode	10%	18%
LED service life	80,000hrs	80,000hrs
Main Material	Aluminum	Aluminum
Rotating Angle Of Arm	>540°	>540°
LED Bulb Power	1w Each Pc	1w Each Pc
Input Power	400w	400w
Operating element	Touch Control	Touch Control
Light head protection rating	IP54+FireProof	IP54+FireProof
Depth of illumination L1+12	1400MM	1100MM
Packing	2 Wooden Cartons	2 Wooden Cartons
LCD Touch Screen	Optional	Optional
Back Up Battery (4-6hrs)	Optional	Optional
Shadow Compensation Function	Optional	Optional
Internal/External Sony Camera(10X)	Optional	Optional
Monitor With Extra Arm(21 Inches)	Optional	Optional
LED Bulb Diameter	20MM	20MM



Micare Power LED E700 double dome
CAMERA AND VIDEO SYSTEM

THE NEW DIMENTSION IN VIDEO IMAGES

CAMERA (INTERNAL & EXTERNAL)

More Details, Better Visualization

Fascinating Images-With Clear, Sharp Contrours



E700 doble dome
Internal Camera



E700+500
Internal Camera



E500+500
Internal Camera

Ultra High Definition High Image Quality Easy Handling

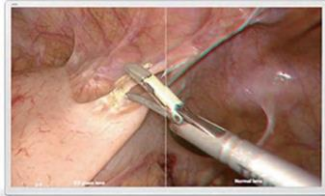


IMAGE SENSOR	SONY 1/2 8TYPE “EXMOR” CMOS, SUPPORT PROGRESSIVE MODE
IMAGE SOLUTION	1920*1080P, APPROX, 2,140,000 PIXELS
VIDEO OUTPUTS	20X OPTICAL ZOOM, 12X DIGITAL ZOOM
ASPECT VIDEO	SDI
FOCUS OPERATING	16:9
WHITE BALANCE	MANUAL & AUTO
REMOTE CONTROL	AUTO, ATW, INDOOR, OUTDOOR, ONE, PUSH WB, MANUAL WB
WIRELESS REMOTE CONTROL	STANDARD ACCESSORIES
HARD DISK FOR STORE	1T
POWER	6.8W
VOLTAGE	DC12-30W, 1.5A
INSTALLATION	INTERNAL & EXTERNAL OPTIONAL
MONITOR	22INCHES HANGING WITH ARM
SOUND COLLECTION	STANDARD



E700
Internal Camera



E500
Internal Camera



E700
Internal Camera



E500
Internal Camera



E700 double
dome



E700+500
External Camera



E500+500
External Camera



E700
External Camera



E500
External Camera



**Future-ready to
evolve with you**

What if you had a lighting system that was modular, upgradeable, and expandable so that it could meet your ongoing needs with ease? You've found it. There are ways to customize this system today and in the future.

All of us here at MICARE are committed to you



SIMPLY INGENIOUS

What if you had illumination in the OR that simply supported you throughout each surgical procedure? The MICARE PowerLED does this, delivering excellent color, contrast, clarity, and control. A unique peninsula design provides optimal illumination at the surgical site, including deep cavity procedures. Advances in LED technology mean that the MICARE Powerled is able to optimize illumination through fewer LEDs than in the past.

You focus on patients. We focus on you.

MICARE Lighting solutions bring together people and technology so that you have exactly what you need, when you need it, for the intelligent OR of today and tomorrow. From project design to implementation to service support, your success is our highest priority.

**LIGHTING
EXPERIENCE**