

Maximize productivity with the Q32E4U 31.5" QHD monitor

The Q32E4U features a spacious 31.5" QHD display and a 100Hz refresh rate for fluid, precise visuals. Its Height Adjustable Stand (HAS) ensures ergonomic alignment, while hardware-based anti-blue light technology supports extended use. With integrated 2x3W speakers, it's a complete solution for professional environments.



Features



QHD Resolution

With 2560 x 1440 resolution, Quad HD (QHD) offers superior picture quality and sharp imagery that reveals the finest details. The widescreen 16:9 aspect ratio provides plenty of space to spread out and work, plus allows you to enjoy games or movies in their original size.



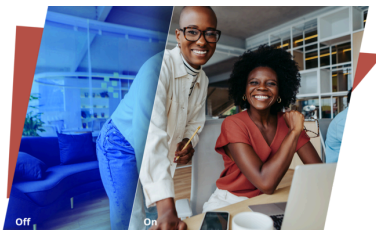
100Hz Refresh Rate

Equip yourself with twice the frame rate of other monitors and say goodbye to image stuttering and blurry motion. With a 100Hz refresh rate every frame is rendered sharply and in smooth succession, so you can line up your shots accurately and appreciate high speed races in all their glory.



Height adjustable Stand

Raise or lower the screen to suit each individual's height and seating preferences. The easy-to-adjust stand ensures hours of comfort.



Anti-Blue light

AOC has created an innovative solution to protect against the damaging effects of blue light from computer screens. AOC's Anti-Blue Light technology is revolutionary in reducing the intensity and strength of blue light from computer screens while still maintaining true color and clarity.

GENERAL	
Model Name	Q32E4U
Brand	AOC
Channel	B2B
Product line	Essential-line
Design family	E4
EAN	4038986112956

DISPLAY INFORMATION	
Screen size (inch)	31,5
Screen size (cm)	80,0
Flat / Curved	Flat
Panel treatment	Antiglare (AG)
Pixel Pitch (mm)	0,2727
Pixels per Inch	93,0
Panel resolution	2560x1440
Aspect ratio	16:9
Panel type	IPS
Backlight type	WLED
Max Refresh rate	100 Hz
Response time GtG	4 ms
Static contrast ratio	1000:1
Dynamic contrast ratio	20M:1
Viewing angle (CR10)	178/178
Display colours	16.7 Million
Brightness in nits	350 cd/m ²
Local Dimming Zones	Global Dimming

VIDEO FEATURES	
Sync technology (VRR)	Adaptive Sync
Digital Signal Frequency Vertical	48-100Hz
Digital Signal Frequency Horizontal	30K-150KHz
HDR (High Dynamic Range)	HDR Mode
Blue Light Technology	TUV Eye Comfort (hardware)
Colour space (sRGB) CIE 1976 %	118,4
Flicker-Free	Flicker Free

CABINET INFORMATION	
Bezel Colour (front)	Black
Cabinet colour (backside)	Black
Cabinet finishing (backside)	Texture
Removable stand	Yes
Speaker power	3 W x 2
Built-in speakers fire direction	Down fire
Kensington Lock	Yes
Vesa wallmount	100x100

ERGONOMICS	
Tilt	-5 (+1/-1) ~ +30 (-1/+1)
Height adjust (mm)	180mm
Swivel	-178° ±2° ~+178° ±2°
Pivot	-90°~90°

SUSTAINABILITY	
TCO Certified	Yes
Energy star	Energy star 8
EPEAT	Gold , Climate+
ECMA Eco declaration	Yes
Product carbon footprint (PCF)	Yes
WEEE	Yes
REACH compliant	Yes
RoHs compliant	Yes
Post-consumer recycled plastic	85%
EPA (latest version)	Yes
Low Halogen	Yes
CEC	Yes
Carton material	Paper
Carton material print	Water Print (Brown Carton)

POWER CONSUMPTION	
Power supply	Internal
Power consumption standby in watts	0,5
Power consumption off in watts	0,3
Energy class	C

REGULATORY COMPLIANCE	
CB	Yes
CE	Yes
TUV-GS-Mark	Yes
TUV Ergo	Yes
EAC	Yes
FCC	Yes
UKCA	Yes

CONNECTIVITY INFORMATION

HDMI	HDMI 1.4 x 2
Digital HDCP (HDMI version)	HDCP 1.4/2.2
DisplayPort	DisplayPort 1.4 x 1
USB Hub	Yes
USB type downstream	4 x USB-A
USB fast charge port	Yes
Audio Output	1x Audio out
DP HDCP version	HDCP 1.4/2.2
USB Type upstream	1 x USB-B
USB generation	USB 3.2 (Gen 1), 5 Gbit/s

PRODUCT DIMENSIONS

Product dimensions incl. base (WxHxD) mm	714.5 x 448.6-628.6 x 270.4
Product dimensions excl. base (WxHxD) mm	714.5 x 420.4 x 60.6
Packaging dimensions (WxHxD) mm	840 x 510 x 159
Gross weight incl. package (in kg)	12,17
Net weight excl. package (in kg)	9,01
Product without stand (kg)	6,06

SOFTWARE

Software	I-Menu
-----------------	--------

WHAT'S IN THE BOX

HDMI cable	1.8
Displayport cable	1.8
Power Cable	Yes

OTHER INFORMATION

Warranty period	5 years
------------------------	---------