

POWER SWITCH AND FOOT PEDAL

Control power, the motor will not work when turned off.  
Foot pedal control for height and trend and reverse trend, freeing medical staff's hands.



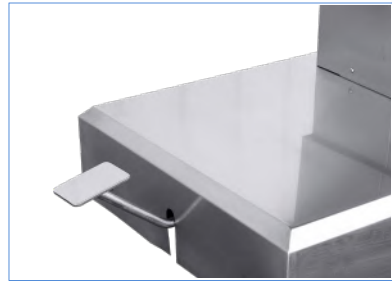
FOOT SECTION

The foot section can be rotated to one side for easy delivery and exam.



CASTOR LOCKING SYSTEM

The table can be moved easily or in a stable position thanks to the special leg elevation system.



GYNECOLOGICAL TABLE

MC-D04 electric gynecological table with Seamless Foaming Mattress considerably improves the comfort for the patient. Whole stainless steel frame gives life duration and easy for hygiene. it can be used for delivery, gynecological operation, examination, also include urgent cesarean.

MAIN FEATURES

- Foot controller is easy to operate.
- Unique profile design which is beautiful and elegant.
- Whole stainless steel structure
- Equipped with hidden sewage basin.
- The table adopts high density sponge and is once foam molding, with no seam.
- Super mute foot wheel and equipped with brake device.
- Armrest swing out ≥90°and can slide horizontally
- Structure and Chassis Stainless steel

TECHNICAL PARAMETER

ITEM	PARAMETER
Bed size	1840*600*750-1000mm
Auxiliary table size	600*550mm
HI-LOW	750-1000mm
Back section	0-60°
Seat section(option)	0-16° option
Trendelenburg	0-22°
Reverse-Trendelenburg	0-22°
Auxiliary table swing out	0-90°
Loading capacity	200kgs



ARMREST



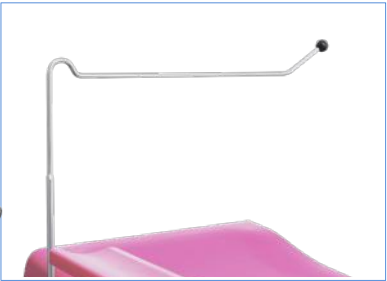
HAND GRIP



LEG SUPPORT



BASSINET



ANESTHESIA SCREEN FRAME



MC-D04

No.3 Jinxiu Road,Jinfeng Industrial Zone,Jinfeng Town,Zhangjiagang,Jiangsu Province,China

+86 13962231292  
info@medikmedical.com

