

MACAN Comfort

MACAN Comfort Series with high performance Power Factor 1.0 are the safe guarding for your critical application.

Application



Main Feature

• Output Power Factor 1

MAC series is a new generation UPS combine with advanced technology and **Power Factor 1.0** output, which perfectly protect your system, and ensure the best output performance.

• Pure Sine Wave Output Less Than 2.5% THD

With the latest POWERCOM technology, MAC is able to provide Pure Sine Wave output with less than 2.5% THD for better user experience.

• Brand New Diagram LCD Display

MAC series equipped with industry-leading LCD display. Users acquire UPS information instantly from the big size and clear display.

• Multi-Section Fan Regulation

With Multi fan speed segment for different loading, MAC remains the best temperature for its high efficiency and reduces the operating noise.

• True Double Conversion

True double conversion UPS provides clean, high quality and stable power to fully protect your important devices.

• 50 / 60 Hz Frequency Converter Mode

No matter how low/high the input voltage is, lock output frequency at 50 Hz or 60 Hz.

• UPSMON PRO and APP Support

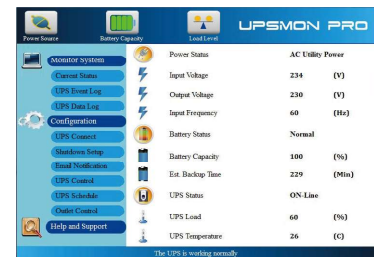
UPSMON PRO and UPSMON APP control UPS and provide UPS status instantly.



Download Link

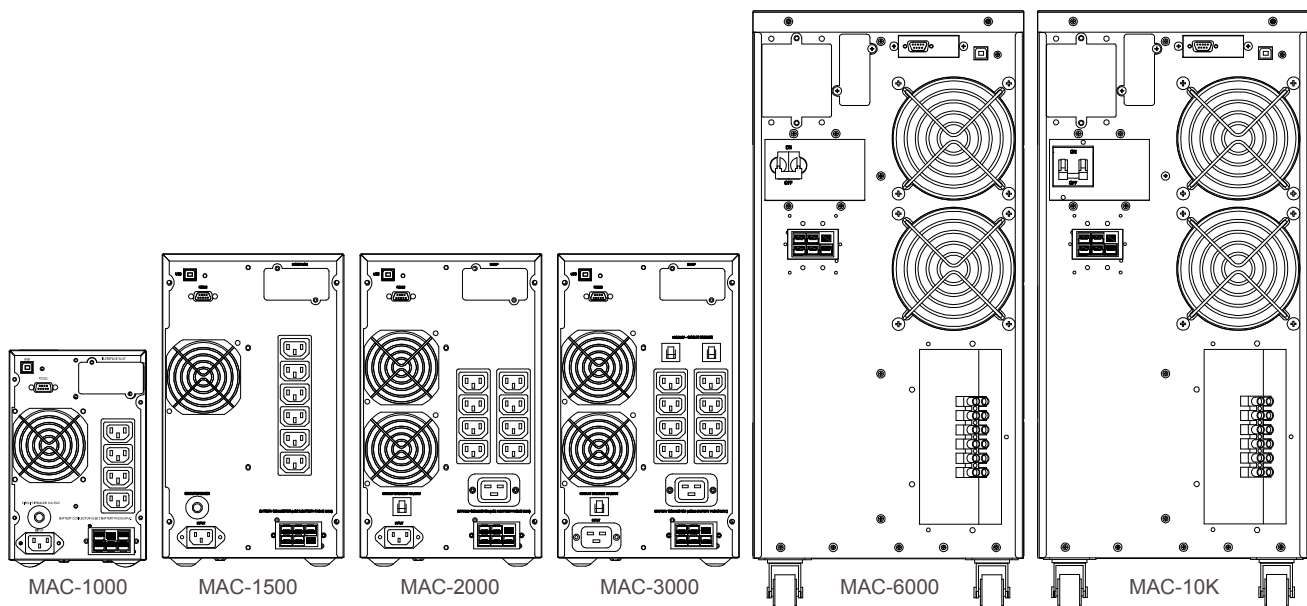


UPSMON for portable Device



UPSMON PRO Interface

IEC Standard Outlet



Specification

Model	MAC-1000	MAC-1500	MAC-2000	MAC-3000	MAC-6000	MAC-10K
Configuration						
Capacity (VA)	1000 VA	1500 VA	2000 VA	3000 VA	6000 VA	10 KVA
Capacity (Watts)	1000 W	1500 W	2000 W	3000 W	6000 W	10 KW
Form	Tower Type					
Phase	Single Phase					
Energy Saving	Yes - ECO Mode Efficiency >94%					
Input						
Voltage	100 / 110 / 120 / 127 or 208 / 220 / 230 / 240 VAC				208 / 220 / 230 / 240 VAC	
Input Voltage Range	60 - 144 VAC, < 25% Load	120 - 276 VAC, < 25% Load		120 - 276 VAC, < 25% Load		
	70 - 144 VAC, < 50% Load	140 - 276 VAC, < 50% Load		140 - 276 VAC, < 50% Load		
	80 - 144 VAC, < 75% Load	160 - 276 VAC, < 75% Load		160 - 276 VAC, < 75% Load		
	90 - 144 VAC, < 100% Load	180 - 276 VAC, < 100% Load		180 - 276 VAC, < 100% Load		
Input Frequency Range	50 / 60 Hz (Auto Sensing)					
Input Power Factor	>0.97					
Cold Start	Yes					
Output						
Rated Power Factor	1.0					
Waveform	Pure Sine Wave					
Voltage	100* / 110* / 120 / 127 VAC ± 2% or 208* / 220 / 230 / 240 VAC ± 2%				208* / 220 / 230 / 240 VAC ± 2%	
Frequency	50 / 60 Hz ±0.25 Hz					
Transfer Time	0 ms					
Harmonic Distortion	≤ 2.5% THD at Linear Load					
Crest Factor	3 : 1					
EPO Function	Option					
Protection						
Overload	Line Mode	105% - 120% for 30 seconds 121% - 150% for 10 seconds				
	Battery Mode	101% - 109% for 10 seconds 110% - 120% for 3 seconds				
Surge Protection	IEC 61000-4-5 Level 3					
Bypass	Internal Bypass (Automatic and Manual)					
Short Circuit Protection	UPS Output Cut Off Immediately					
Battery						
Type	12V 9Ah	12V 7Ah	12V 7Ah	12V 9Ah	12V 7Ah	12V 9Ah
Quantity	2	4	6	6	20	20
Sealed, Maintenance Free	Yes					
Typical Recharge Time	4 hr to 90%					
External Battery Cabinet	Option					
	12V 7Ah*6,24Vdc	12V 7Ah*8,48Vdc	12V 7Ah*12,72Vdc		12V 7Ah*20,240Vdc	12V 9Ah*20,240Vdc
External Battery Connector	Option					
Management & Communication						
Indicator	LCD Control Panel					
Communication Port	RS 232, USB B type					
SNMP Slot	Option					
Audible Alarms	Yes					
Physical						
Dimensions (WxDxH) (mm)	144 x 357 x 228		191 x 406 x 327		257 x 590 x 570	
Weight (kgs)	10.4	16.4	20.3	22.9	78	88.4
Shipping Dimensions (mm)	249 x 448 x 359		292 x 500 x 455		380 x 710 x 735	
Shipping Weight (kgs)	11.5	18.4	22.3	24.9	87	97.4

* While 208V output, capacity will be derated to 90%.

* While 100V input, capacity will be derated to 80% for 1.5K/2K/3K LV model.

* While 110V input, capacity will be derated to 90% for 1.5K/2K/3K LV model.

** Specifications are subject to change without further notice.

** Specifications are for reference, please refer to information based on real product.