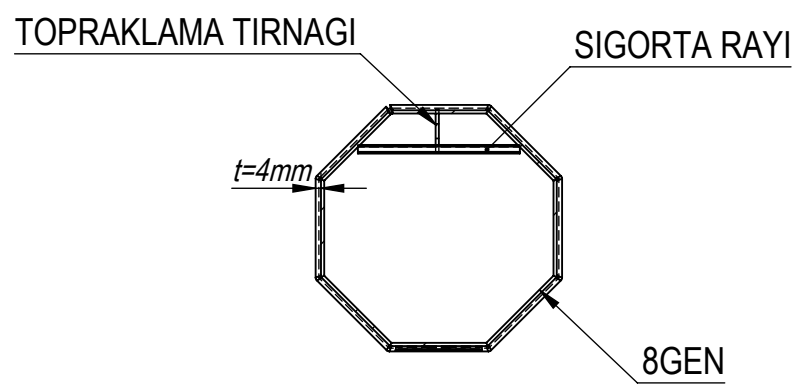
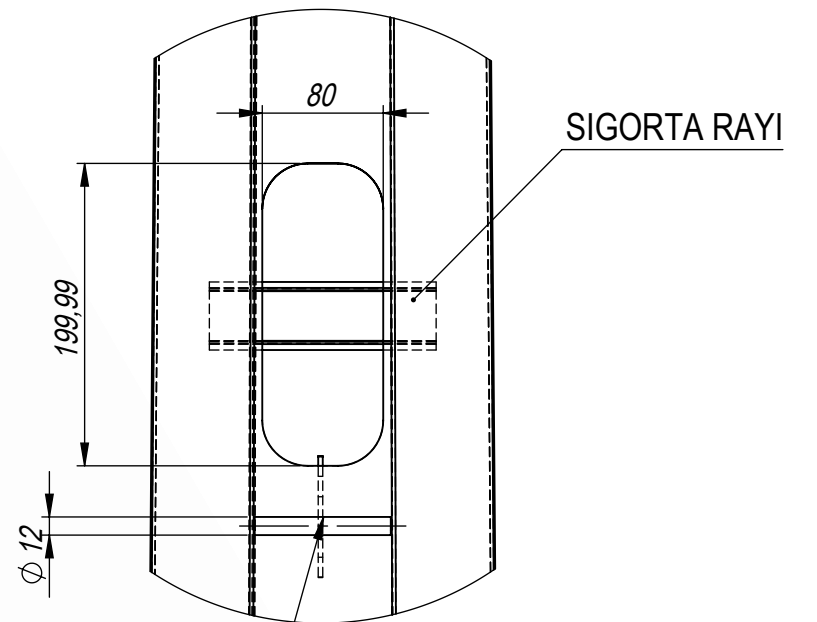


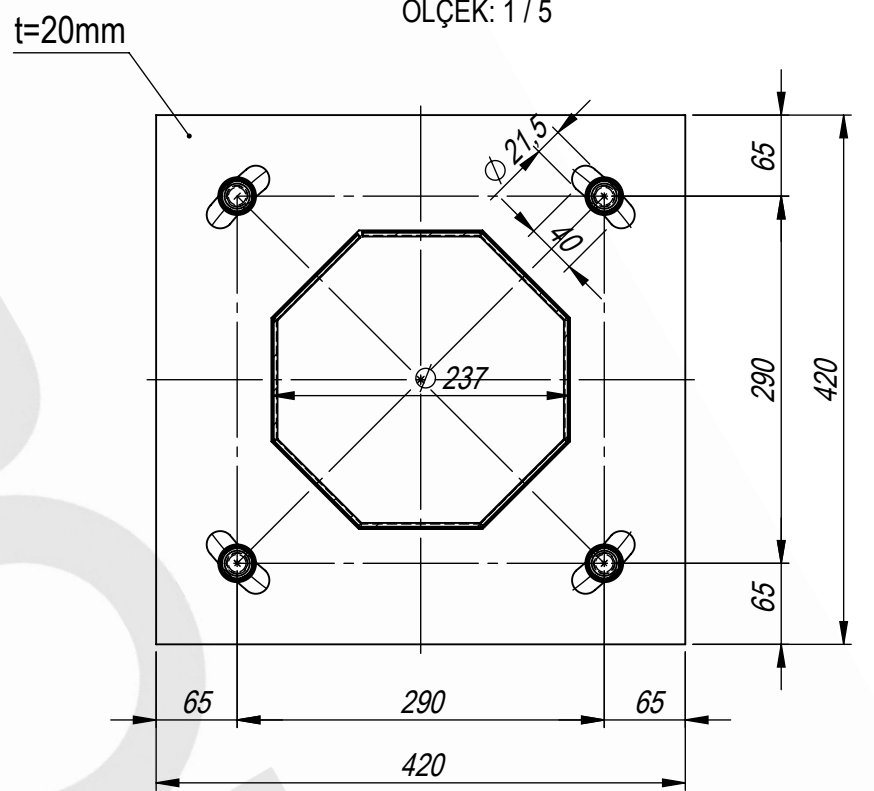
DETAY X
ÖLÇEK: 1 / 5



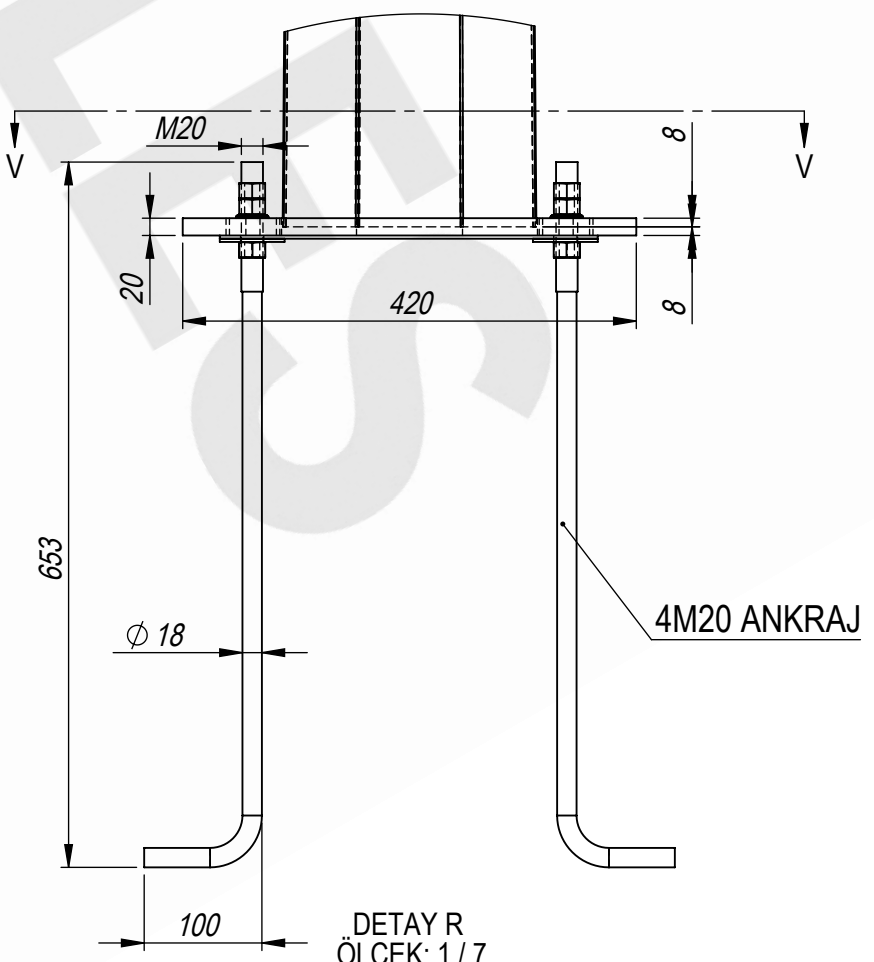
KESIT W-W
ÖLÇEK 1 : 7



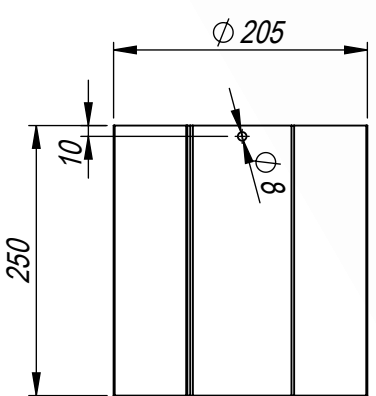
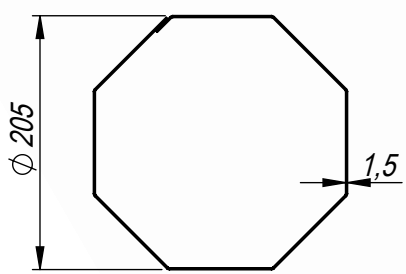
DETAY S
ÖLÇEK: 1 / 5



KESIT V-V
ÖLÇEK 1 : 6



DETAY R
ÖLÇEK: 1 / 7



KAPAK DETAYI

GENERAL NOTES / GENEL NOTLAR

MATERIAL / MALZEME

NAME / İSİM

SIGN / İMZA

DATE / TARİH

SİPTEK NO

YENİ TEDAŞ

AD2 110-15
OUTLINE

* ALL DIMENSIONS ARE IN mm.

* TİM ÖLÇÜLER mm'DİR.

* ALL STEEL ITEMS BOLTS, NUTS & WASHERS TO BE HOT-DIP GALVANIZED PER (EN ISO 1461)

* TİM ÇELİK ELEMANLAR, CIVATA, SOMUN VE RONDELLERLER SIFAK DALDIRMA GALVANİZDİR. (EN ISO 1461)

* BOLTS CAN BE USED AS (ISO 898) 5.8 & 6.8 & 8.8 ACCORDING TO DESIGN CRITERIA.

* TASARIM KRİTERLERİNE GÖRE CIVATALAR (ISO 898) 5.8 & 6.8 & 8.8 OLARAK KULLANILABİLİR.

SHAFT / GÖVDE

S235

K.CANBALOĞLU

06.08.2017

AD2-110-15

YENİ TEDAŞ

AD2 110-15
OUTLINE

FLANGE / FLANŞ

S235

uoakbyik

06.08.2017

AD2-110-15

YENİ TEDAŞ

AD2 110-15
OUTLINE

OTHER ACCESSORIES / DİĞER AKSESUARLAR

S235

A.PEHLİVAN

06.08.2017

AD2-110-15

YENİ TEDAŞ

AD2 110-15
OUTLINE

CHECKED / KONTROL

S235

A.PEHLİVAN

06.08.2017

AD2-110-15

YENİ TEDAŞ

AD2 110-15
OUTLINE

DESIGN WIND SPEED / TASARIM RÜZGAR HIZI

S235

A.PEHLİVAN

06.08.2017

AD2-110-15

YENİ TEDAŞ

AD2 110-15
OUTLINE

DESIGN OF SAFETY / GÜVENLİK KATSAYISI

S235

A.PEHLİVAN

06.08.2017

AD2-110-15

YENİ TEDAŞ

AD2 110-15
OUTLINE

DESIGN STANDART / TASARIM STANDARTI

S235

A.PEHLİVAN

06.08.2017

AD2-110-15

YENİ TEDAŞ

AD2 110-15
OUTLINE

DESIGN STANDART / TASARIM STANDARTI

S235

A.PEHLİVAN

06.08.2017

AD2-110-15

YENİ TEDAŞ

AD2 110-15
OUTLINE