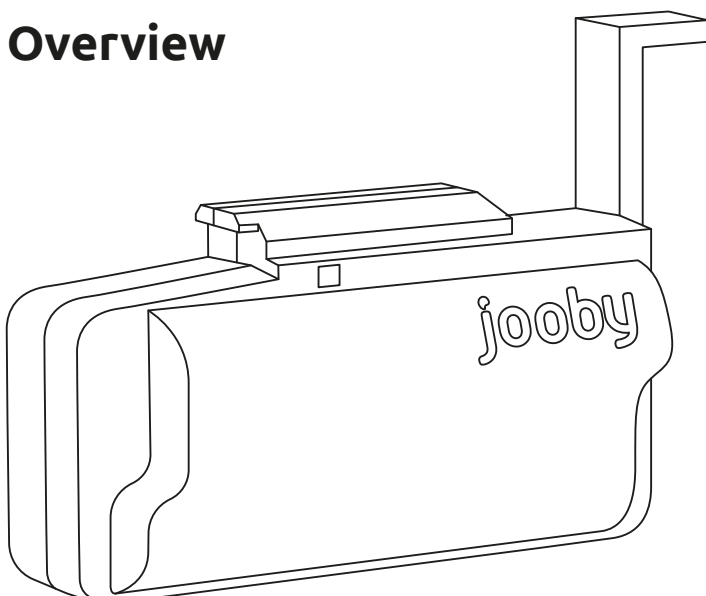


# MXI-LoRa-02 (Elster) LoRaWAN® Radio module Installation Manual

## Overview



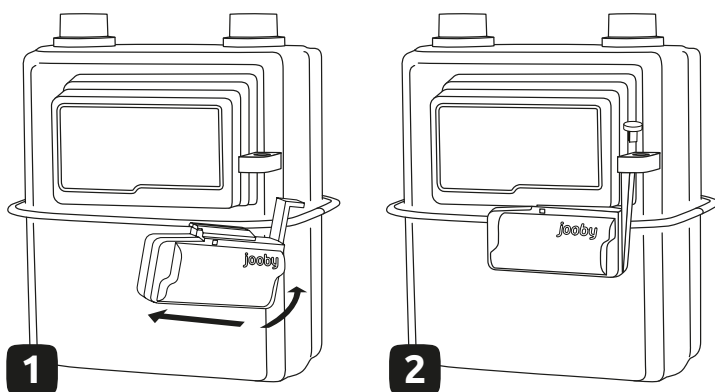
The MXI-LoRa-02 radio module is designed for automatic collection of gas meter readings and their transmission to the accounting system over the LoRaWAN® wireless network. It helps a utility company, developer, housing cooperative, managing company, or enterprise to fully automate the gas metering collection process and receive accurate, on-time data.

## Before You Begin

Before starting the installation, make sure that the MXI-LoRa-02 (Elster) radio module has been pre-configured in the network of your LoRaWAN® service provider (you should send the necessary data to the provider in advance (DevEUI, AppEUI and AppKey)).

## Installation

- 1** Please shut off the gas supply before installing the radio module
- 2** Install the radio module to the gas meter as indicated on the diagram. Fasten the radio module firmly.



Make sure that the LED indicator flashed once at the moment of installation. You should also see six short flashes within 1 minute. This means that a radio exchange took place between the radio module and the service provider gateway.

After installation, open the gas supply.

# Registration

The radio module does not require a special registration procedure because it should have been pre-registered on the provider's network (See chapter 'Before you begin'). Please contact your service provider in order to make sure that the module has been registered.

# Troubleshooting

Problem	Reason	How to fix
LED Indicator did not flash during installation procedure	Module is defective	Please replace the module
No registration in the provider's network.	Weak LoraWAN's network signal at the place of installation	Please contact your LoraWAN service provider
The module is not transmitting data	Weak LoraWAN's gateway signal at the place of installation	Please contact your LoraWAN service provider
The radio module cannot be installed in the seat	The module has been mounted incorrectly	Carefully try to repeat the installation procedure as shown in the picture above
	Gas meter model does not match the specifications of the module	Make sure that gas meter is listed in the module's specifications
After a period of time, the radio module stopped transmitting data	The battery is discharged	Please replace the module



Lora-MXI-02 User Manual