

Qty.	Description
------	-------------

1	<p>CUE 3X380-500V IP20 55KW</p>
---	--



Note! Product picture may differ from actual product

Product No.: On request

The Grundfos CUE is a complete range of variable frequency drives for effective speed control of any Grundfos pump without integrated drives.

It is perfectly suited for pump applications in the water or wastewater network, building services, or industrial pumping solutions. CUE is an integral part of Grundfos iSOLUTIONS thus can be seen as a natural extension of the E-pump range.

CUE provides a series of pre-defined application control modes, including constant pressure, constant differential pressure, proportional differential pressure, constant temperature, constant level, constant flow rate, constant other values, open loop, sensorless constant differential pressure, and sensorless proportional differential pressure.

The pre-defined control modes simplify programming the drive for the application.

When controlled from an external source, the open loop control mode is used, supplying the CUE with information about the required speed.

CUE has pre-programmed data for different Grundfos pump variants.

During installation, the correct values are set for specific pumps for optimum performance and protection, easing installation and improving operation.

A start-up guide allows easy installation by asking for a few parameters and then does all the settings.

The advanced HMI panel features a Favorites menu for a one-stop adjustment of setpoint, operating mode and control mode.

A main menu with password protection is featured for advanced installation and troubleshooting without additional tools.

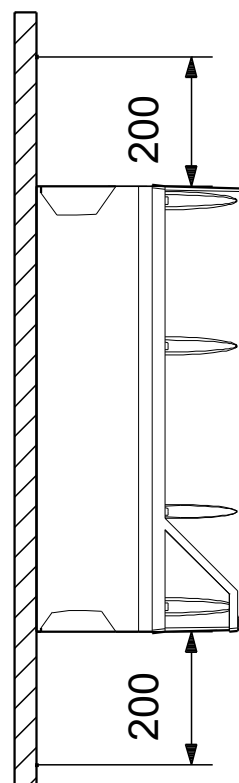
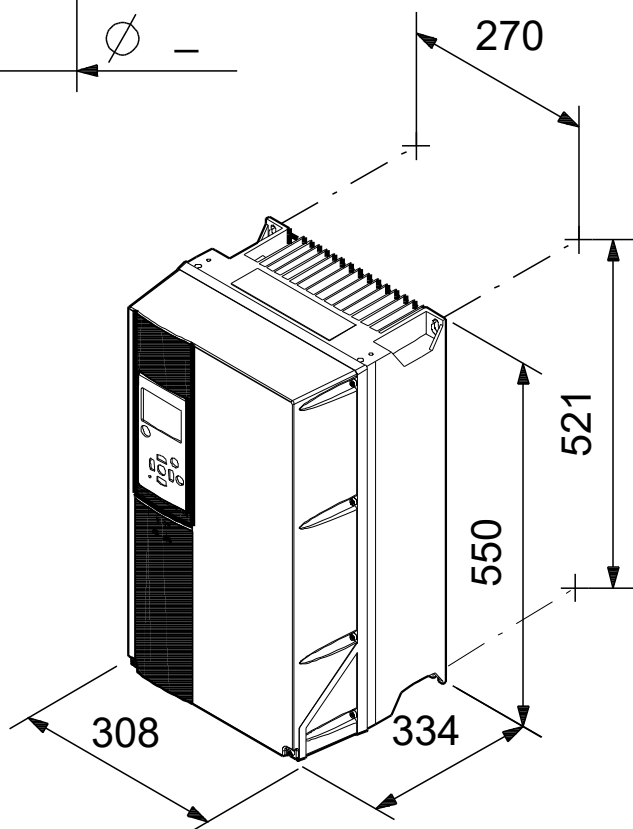
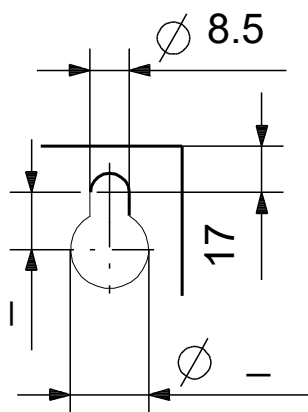
The HMI panel comes with an info key with detailed descriptions for easy settings and status and it enables the user to log data for optimizing the performance of the pump system.

CUE runs with the most energy efficient motor construction types for higher flexibility, and for the highest pump system efficiency. It can be paired with asynchronous induction motors, permanent magnet motors, synchronous reluctance motors and PM assisted SynRM.

We offer several dU/dt and sine-wave motor filters for our CUE range to reduce the dU/dt and peak voltages to the motor windings and the acoustic noise generated in the motor.

The input/output add-on board provides additional input opportunities: one 0/4-20 mA analog input for an additional sensor, one 0-20 mA analog output and two inputs for Pt100/Pt1000 temperature sensors, for instance for bearing monitoring.

On request CUE 3X380-500V IP20 55KW



Note! All units are in [mm] unless others are stated.
Disclaimer: This simplified dimensional drawing does not show all details.