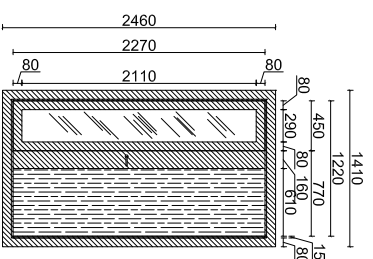
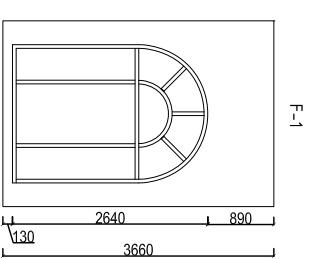


U1

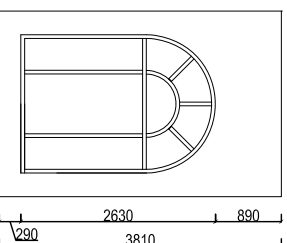


U1

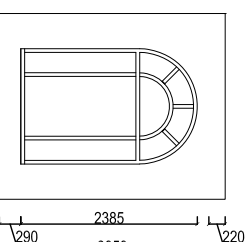
- MDF RAL 7015
- RAL -3170
- Тонированное стекло 50% прозрачности, цвет светло-серый



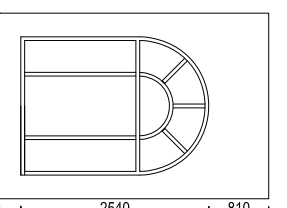
F-1



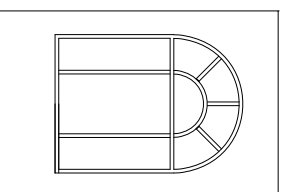
F-2



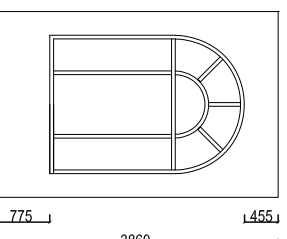
F-3



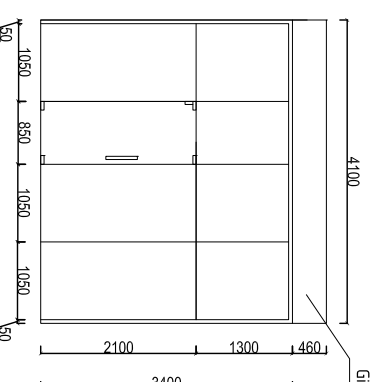
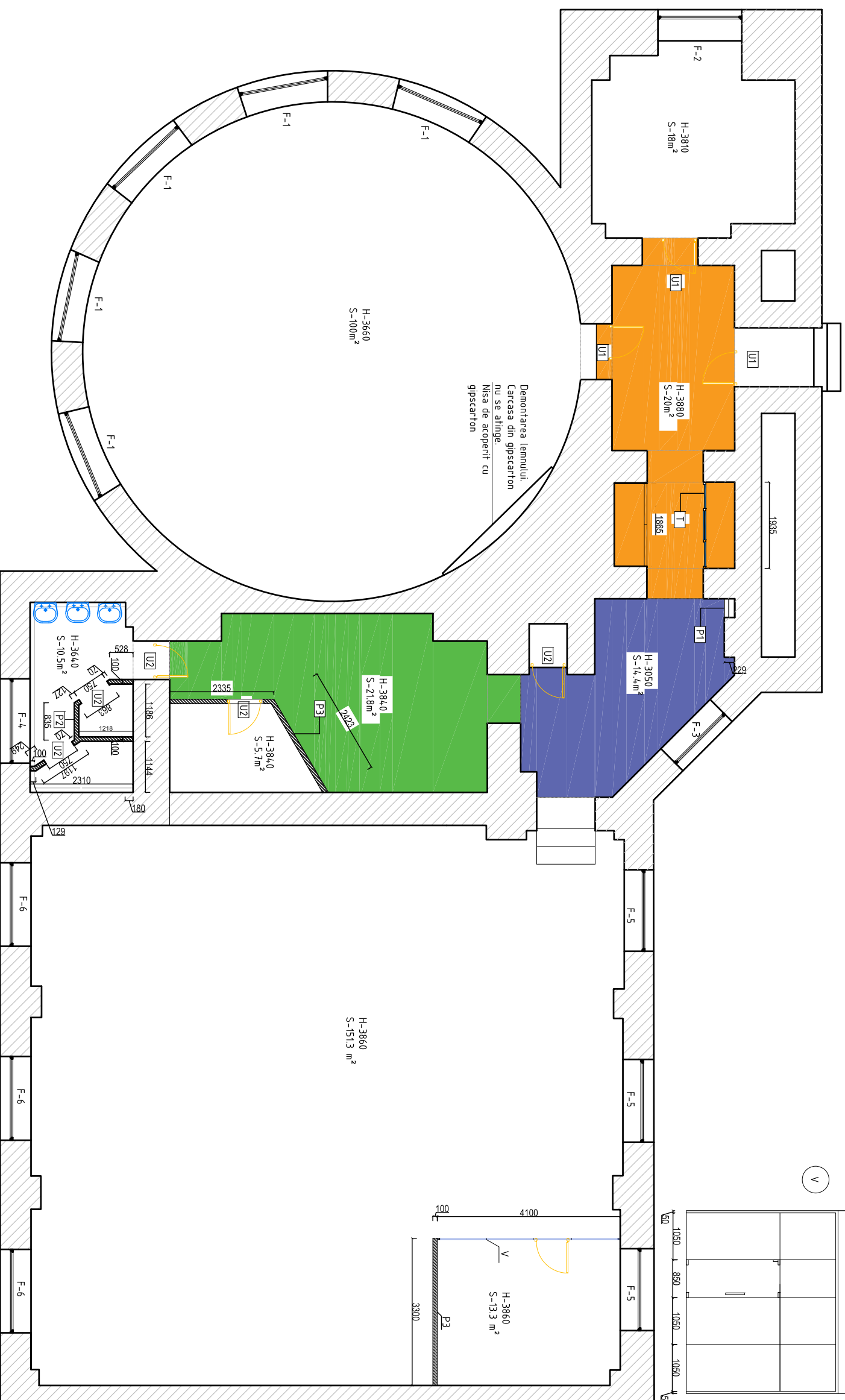
F-4



F-5



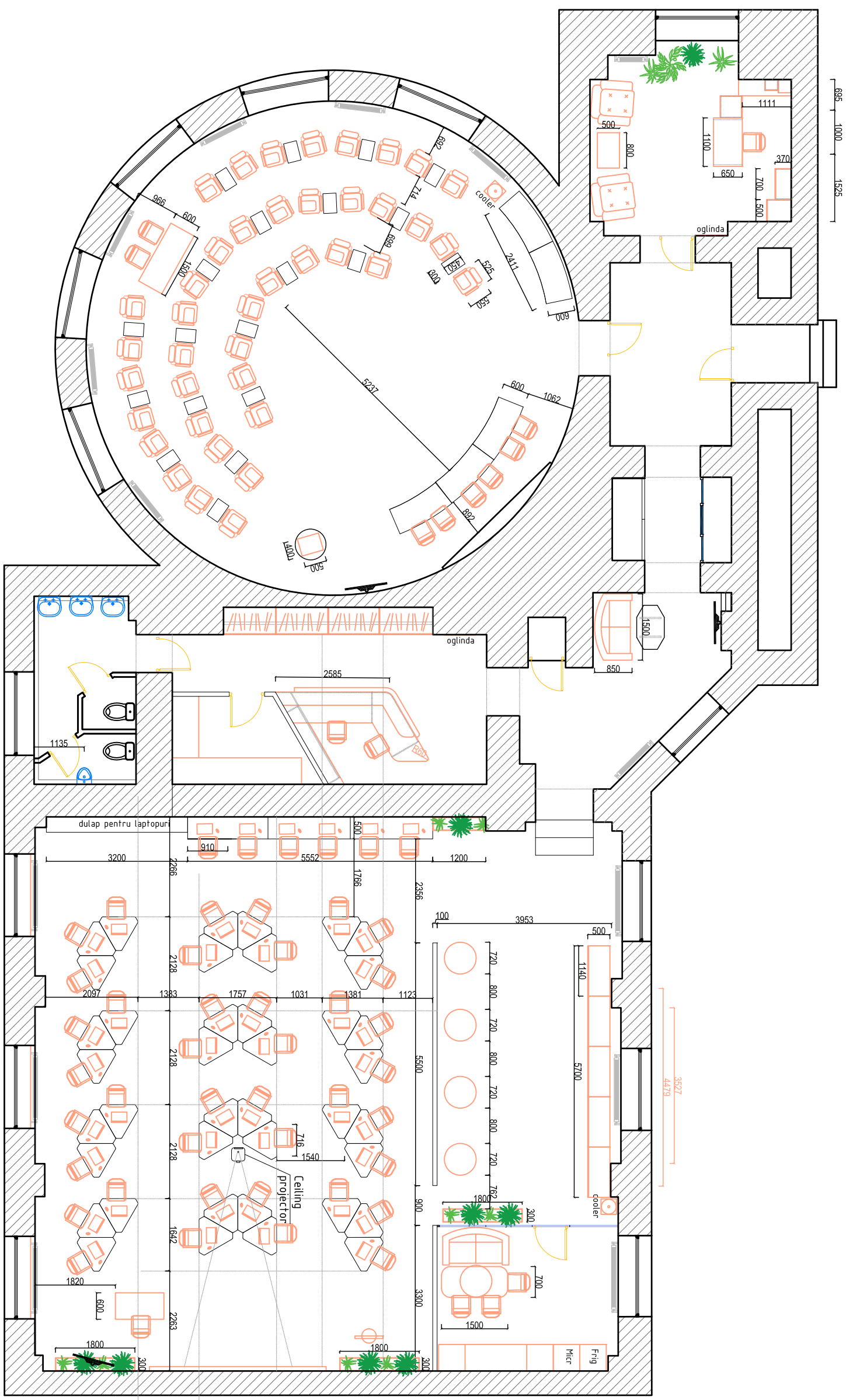
F-6



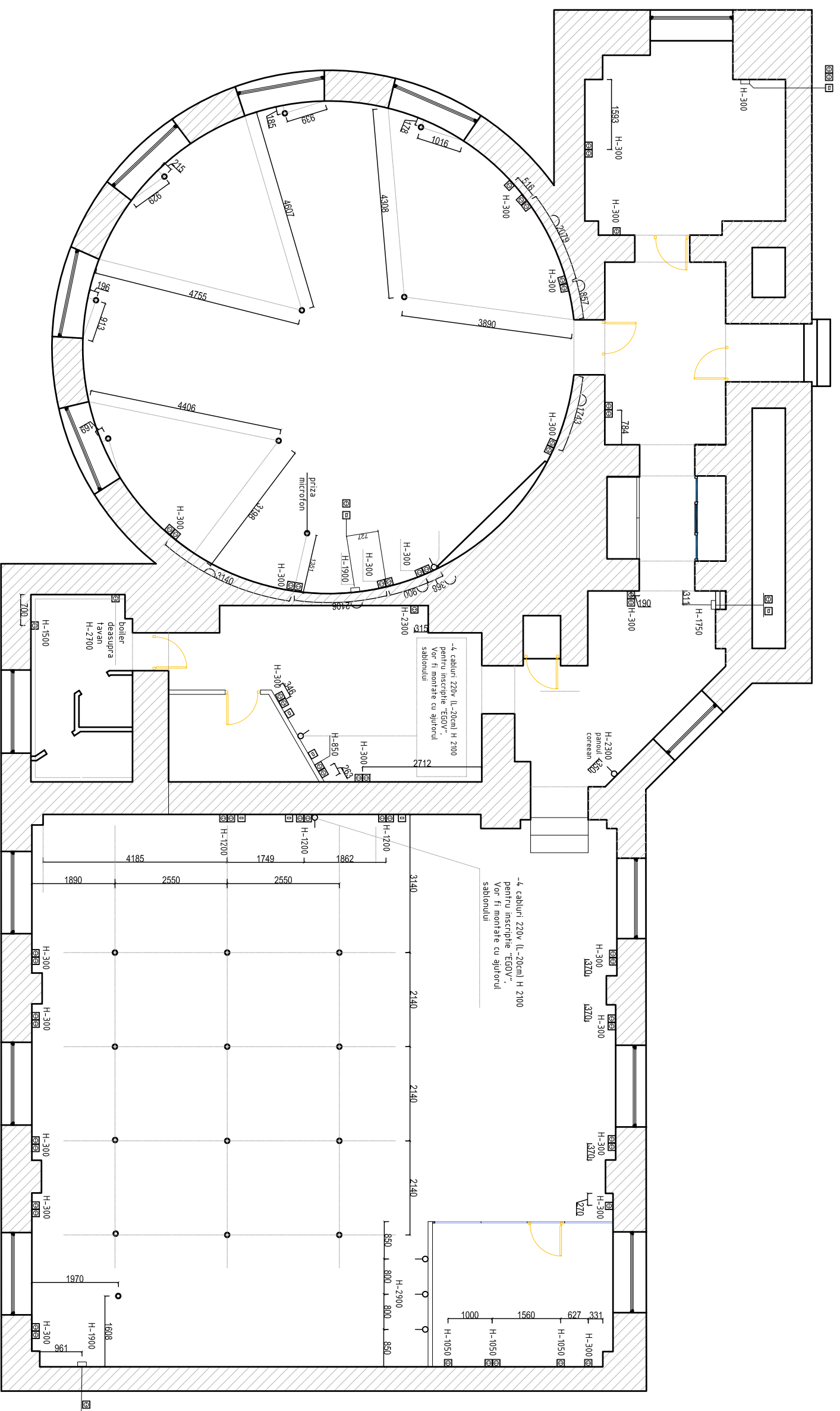
Gipscarton

Legenda montarea peretilor		Gipscarton/ Carcasa met.	M2
P1	Perete gips-carton; carcasa metalic 75 mm, GC 12,5 mm. (H-3.1)	13	
P2	Perete gips-carton rezistent la apa; carcasa metalic 75 mm, GC 12,5mm din ambele parti. (H-3.7)	316	
P3	Perete gips-carton; carcasa metalic 75 mm, GC 12,5mm din ambele parti. (H-3.9)	65	
U1	Usa din lemn 125x2,3 m - 3 buc.		
U2	Usa din MDF culoarea alba 0.7x2.1 - 5 buc.		
V	Vitrail: carcasa din aluminiu 4100x3500 sritca securizata la singura foaie geam 10mm) fara rama, toc metalic, incalzire, optifer, garnitura cauduc.		
T	Termopan cu 3 usi glisante 1.93x2.3		

Created by Stela Sirbu	Approved by	Proiect arhitectura de interior	Plan montare	Data 10.02.2020	A3	Coala 2
EGOV						



EGOV	Created by Stela Sirbu	Project arhitectura de interior	Data 10.02.2020	A3	Coala 3
	Approved by				



BORDEROUL PRIZELOR

DESEN	DENUMIREA	CANTITI
●	prize încorporate în pardoseala: 3 - 220V 2 - RJ 45	21
⊗	Priză cu 1 post	10
⊗	Priză cu 2 posturi	26
○	iesire cablu 220V din perete	
⊞	Priză RJ 45	9
□	set prize	

Created by  
Stela Sirbu

Approved by

Proiect arhitectura de interior

EGOV

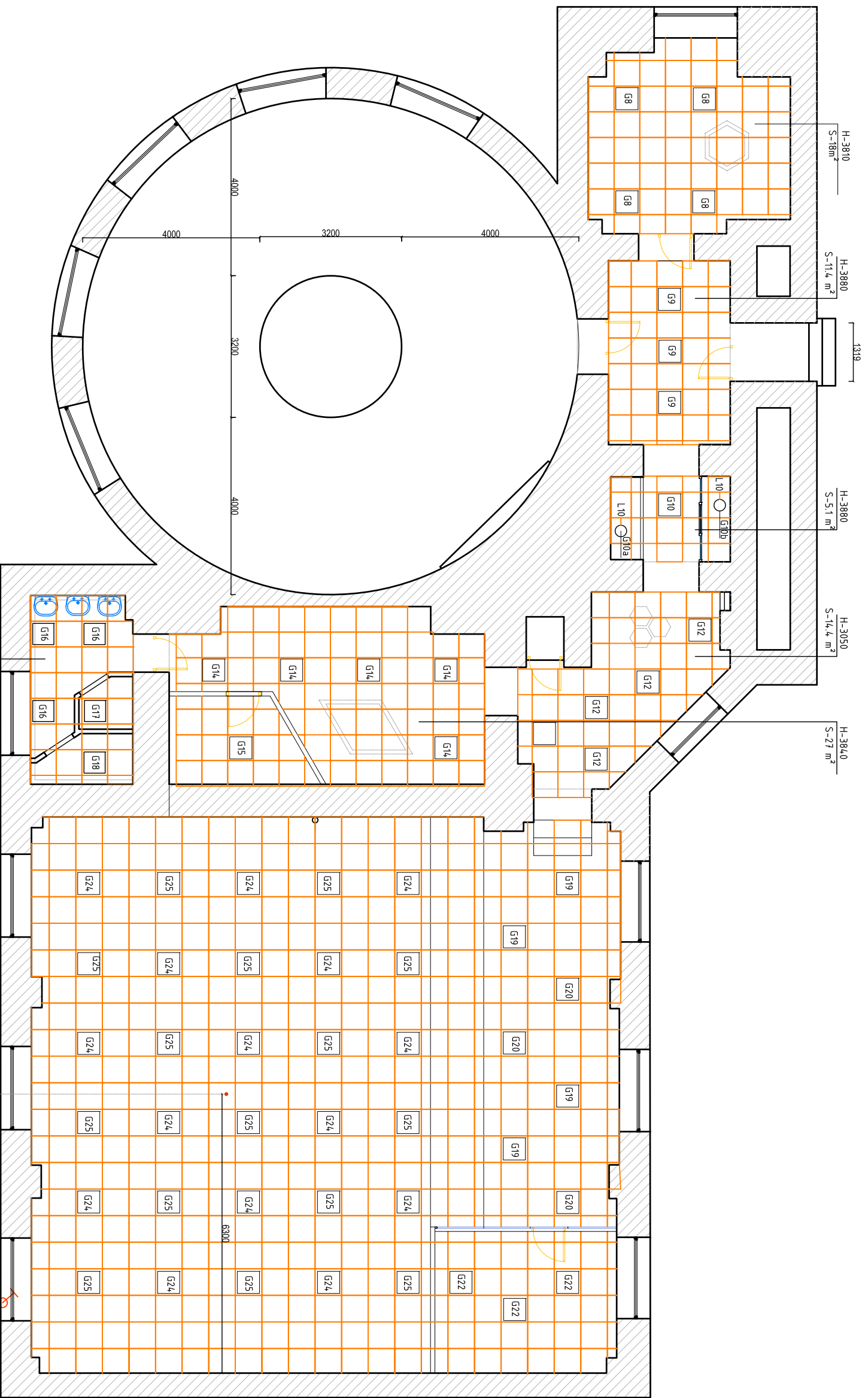
Plan amplasarea prizeleor

Data  
10.02.2020

A3

Coala  
4

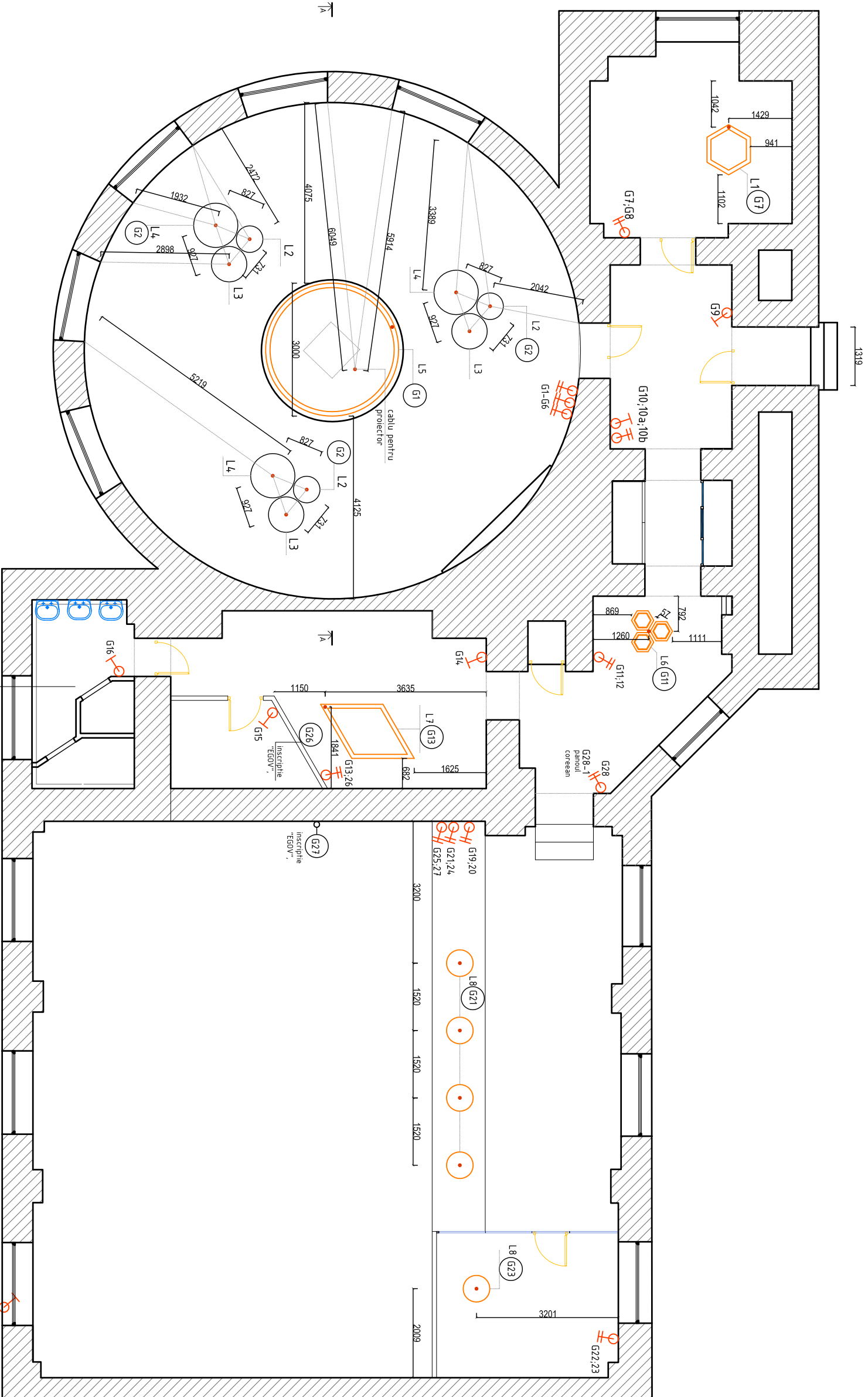




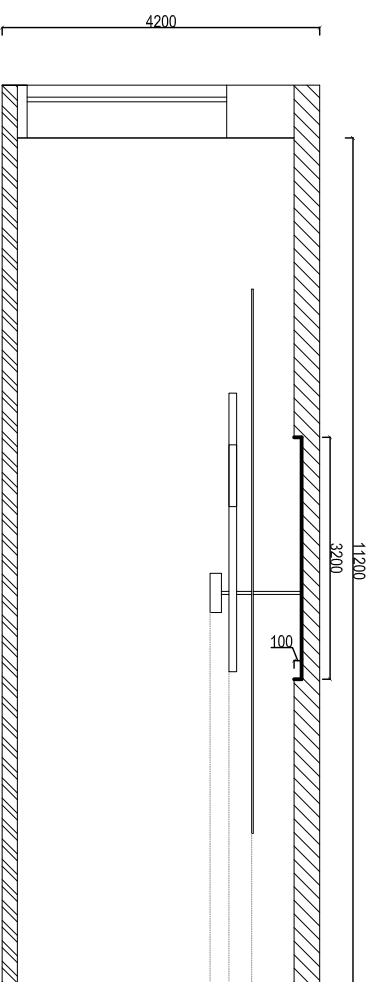
Note:  
 Armstrong Nou - "Orbit"  
 S-251 m<sup>2</sup>

proector

Created by Stela Sirbu	Approved by	Proiect arhitectura de interior	Data 10.02.2020	A3	Coala 5
EGOV		Plan tavan N1: lampi existenti; tavan Armstrong			



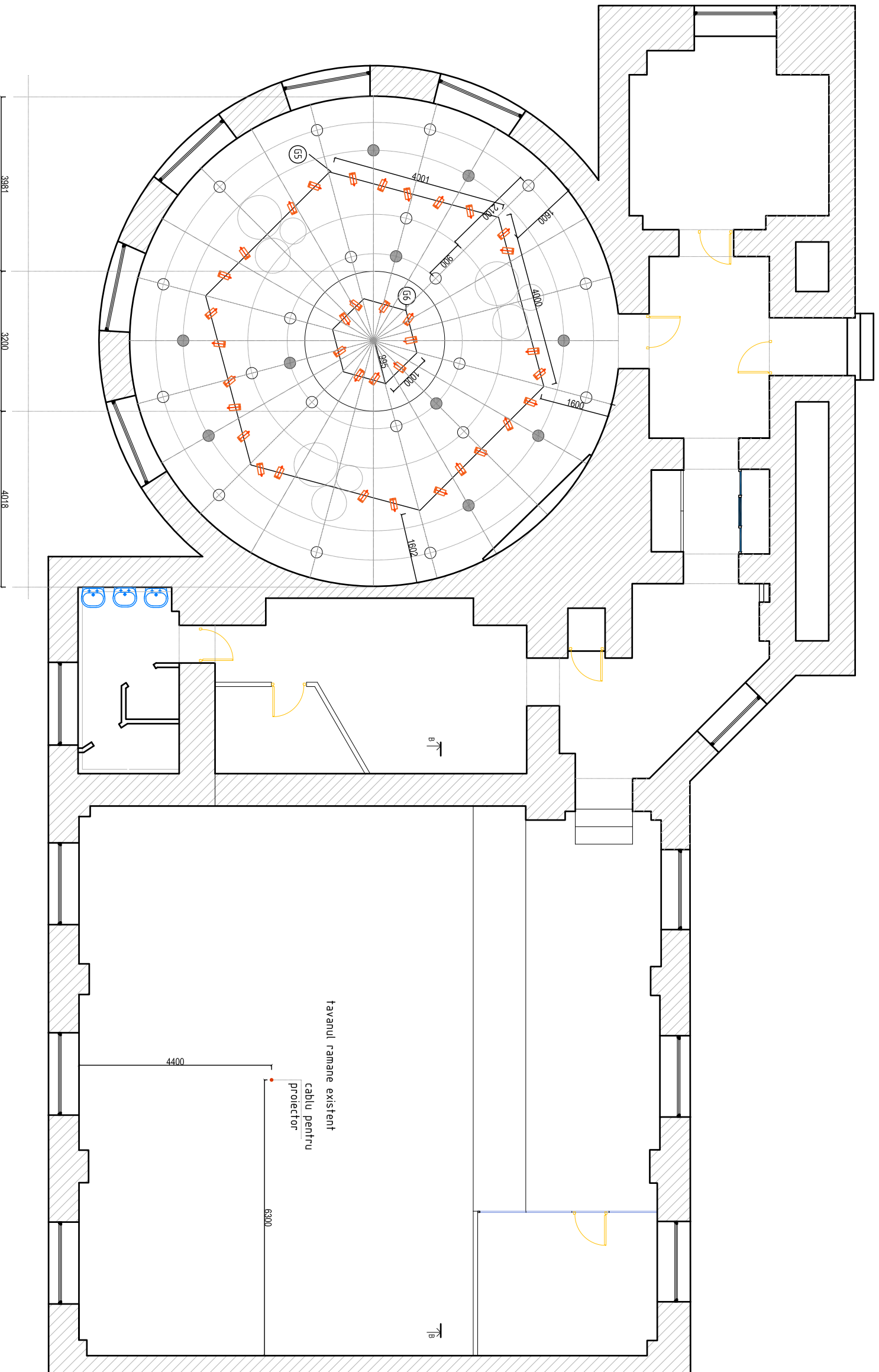
Sectiunea A-A



- 3.66 Gipscarton vopsit Caparol Venatio 50 S-92 m<sup>2</sup>
- 3.10 Sina
- 2.80 Lampi custom made
- 2.55 Projector
- Gipscarton vopsit Caparol Venatio 25 S-8 m<sup>2</sup>

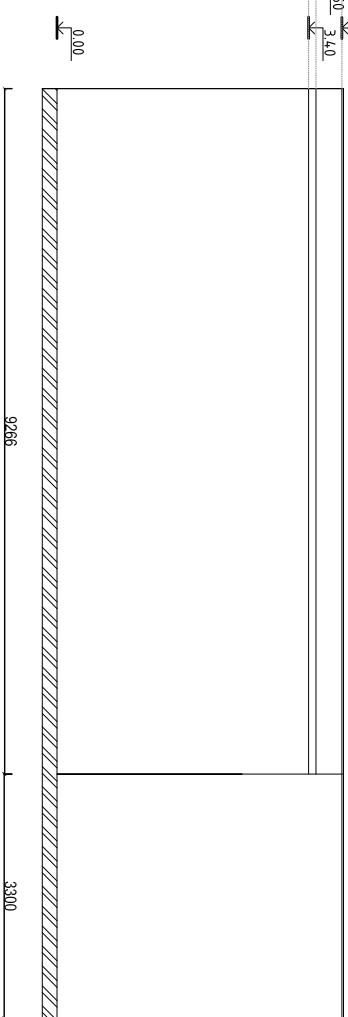
Nota:  
In grupa sanitara iluminarea si ventilarea va fi actionata cu sensor de miscare 5 min.

Created by	Approved by	Proiect arhitectura de interior
EGOV		Plan tavan N2: lampi custom made; sectiunea A-A
Date	Coala	
10.02.2020	A3	6



Sectiunea B-B

Armstrong 2,85  
 Gipscarton 2,40



Grupa	COD	DESEN
(G3)	L10	○
(G4)	L10	●
(G5)	L9	⬆
(G6)	L9	⬆

Created by  
Stela Sirbu

Approved by

Proiect arhitectura de interior

EGOV

Plan tavan N3: spoturi,  
round lamps;  
sectiunea B-B

Data  
10.02.2020

A3

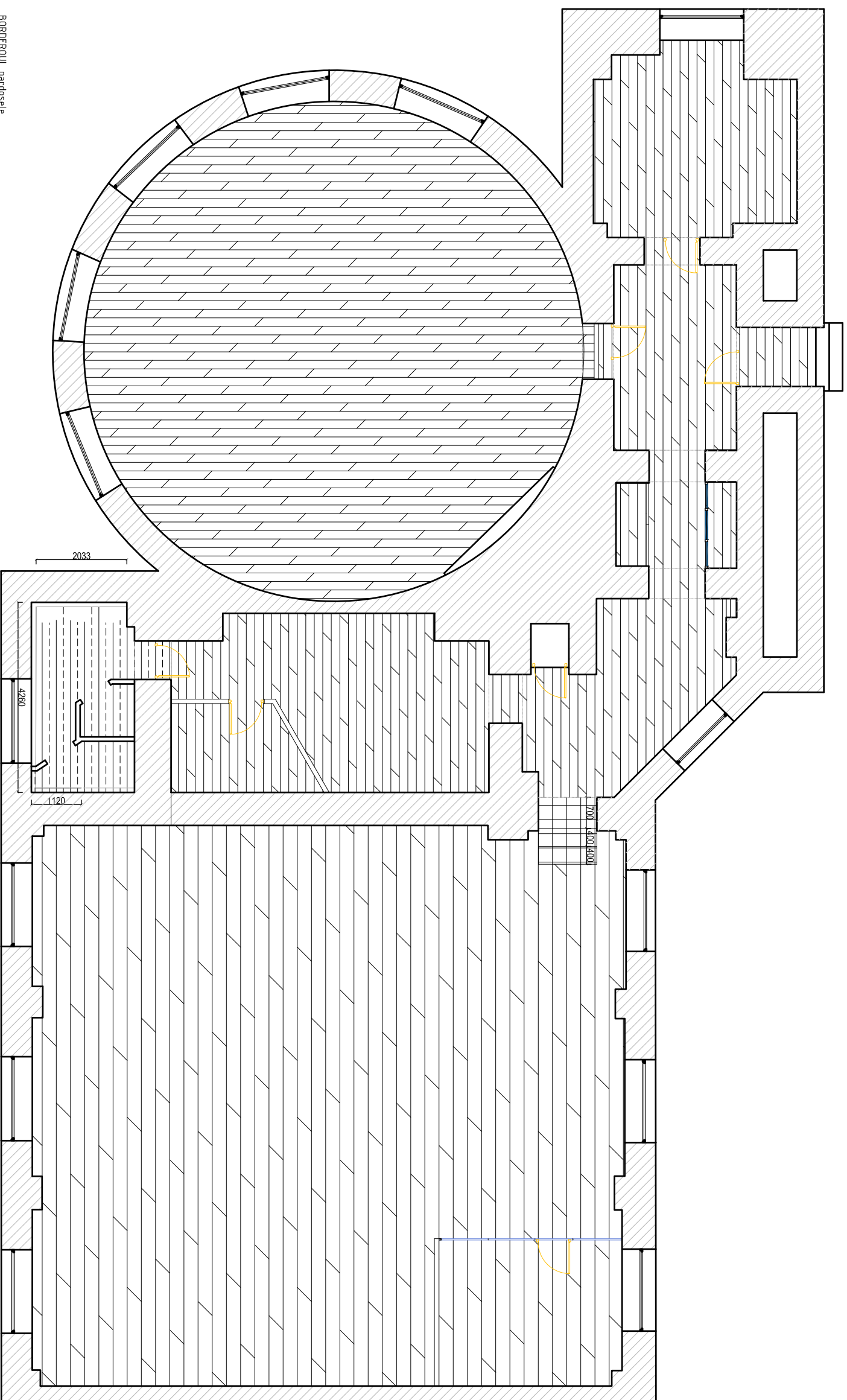
Coala  
7

BORDEROUL Corp de iluminat custom made


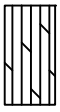






COD	DESEN	DENUMIREA	CANTITATEA buc.
L1		Corp de iluminat suspendat, Custom made H montaj de pardosela - 2200 plastic negru; plexiglas alb; banda led 4000K	1
L7		Corp de iluminat suspendat, Custom made H montaj de pardosela - 2500 plastic negru; plexiglas alb; banda led 4000K	1
L6		Corp de iluminat suspendat, Custom made H montaj de pardosela - 2200 plastic negru; plexiglas alb; banda led 4000K metal negru	3
L2		Corp de iluminat suspendat, Custom made H montaj de pardosela - 2500 plastic negru; plexiglas alb; banda led 4000K	3
L3		Corp de iluminat suspendat, Custom made H montaj de pardosela - 2500 plastic negru; plexiglas alb; banda led 4000K	3
L4		Corp de iluminat suspendat, Custom made H montaj de pardosela - 2500 plastic negru; plexiglas alb; banda led 4000K	3
L9		Track Spotlight 20W 4000K Black	36
L10		Round Ceiling Lamp white d-26cm 18W 4000K	32
L8		Corp de iluminat suspendat, Custom made H montaj de pardosela - 2200 plastic negru; plexiglas alb; banda led 4000K fanera	5
L5		Corp de iluminat suspendat, Custom made H montaj de pardosela - 2200	1

COD	DESEN	DENUMIREA	CANTITATEA buc.
			64
			6
		Interrupator cu 1 clapă, H - 1000	6
		Interrupator cu 2 clapă, H - 1000	11
G	Grupa corpuriilor de iluminat	Sina 1 m	6
		Sina 2 m	6

Created by	Approved by	Project arhitectura de interior
EGOV		Plan tavan N4: Borderoul iluminare
		Data 10.02.2020
		A3
		Coala 8



BORDEROUL pardosalei

		Suprafata - 34,17 m <sup>2</sup> Laminat Kronotex Robusto D3074 Saverne Cl.33
		Suprafata - 14 m <sup>2</sup> Teracota COB 95992, 1420 Altitud Atena Siera 20x120
		Suprafata - 2,75 m <sup>2</sup> Teracota "beton"
		Pliinta din plastic pentru Laminat Kronotex Robusto D3074 Saverne Cl.33 180 M.L.

Created by  
Stela Sirbu

Approved by

Proiect arhitectura de interior

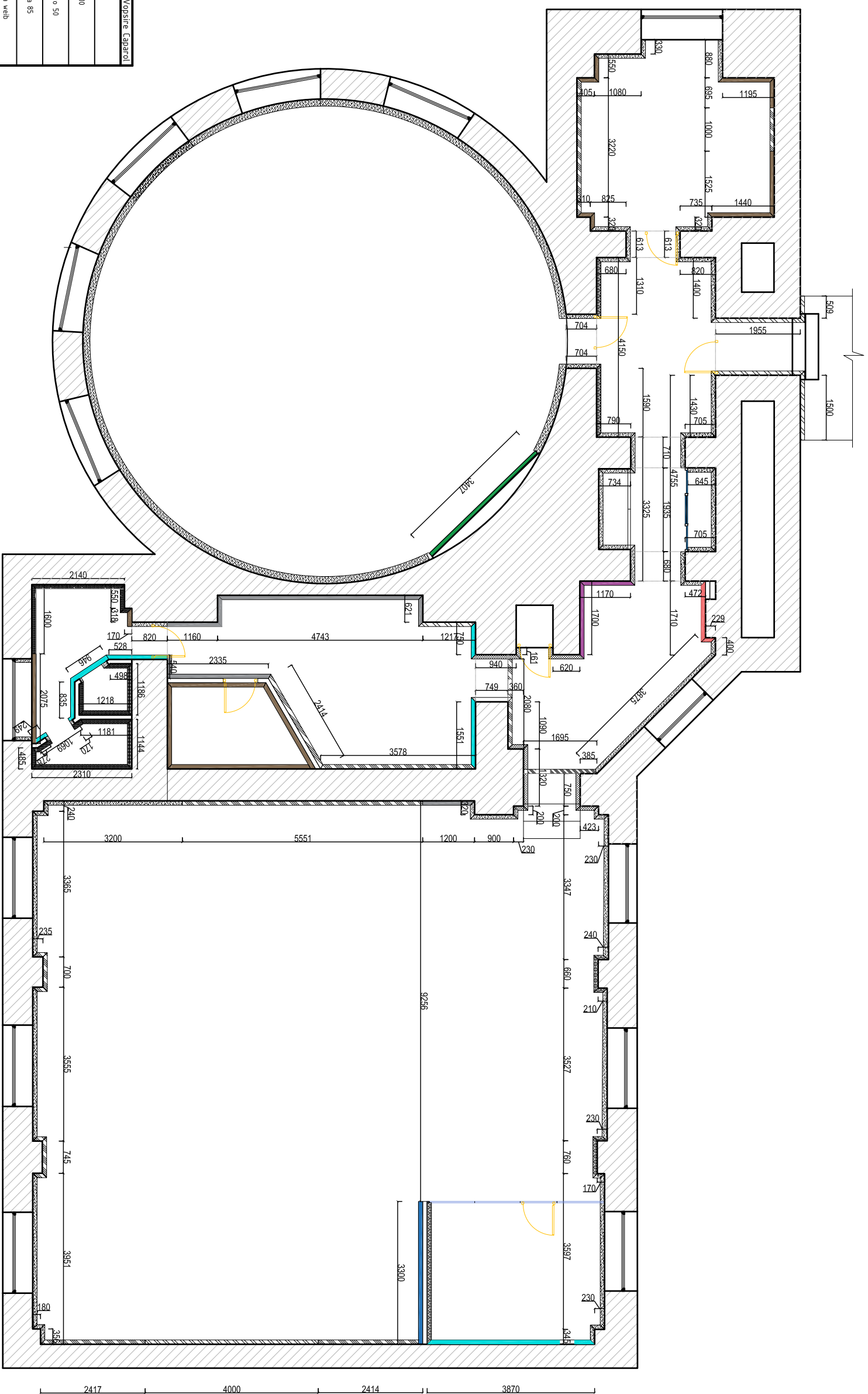
EGOV

Plan pardoseala

Data  
10.02.2020

A3

Coala  
9



BORDEROUl vopsirea oerelilor

DESENUL	DENUMIREA	M2	COD Vopsire Capatul
	Perele decorat cu caramida alba "Praga"	93	
	Perele vopsit bej	80	Onix 10
	Perele vopsit gri deschis	41	Venato 50
	Perele vopsit turcoaz deschis	32,8	Parina 85
	Perele vopsit alb	264,6	Umbră web
	Perele decorat cu caramida alba "Praga", vopsit in gri	32,5	Venato 50
	"Perele" vopsit alb	12,5	
	"Perele" vopsit alb	12,2	
	Tapet printat cu desen in Camera de odihna	11,2	
	Tapet printat cu desen "NAP"	18,7	Interior
	Perele decorat cu PAL EGGER 3170	18,5	Scara - intrare
	Perele decorat cu MDF vopsit	12,5	RAL 5021
	Piaci ceramice BEJ	30	
	Tapet printat cu desen "Hibiscus"	8,8	
	teracota COD 95992, H20 Artina Area Siena 20x120	8	
	Perele vopsit rosu (coral)	6	Veneta 5

Created by  
Stela Sirbu

Approved by

Proiect arhitectura de interior

EGOV

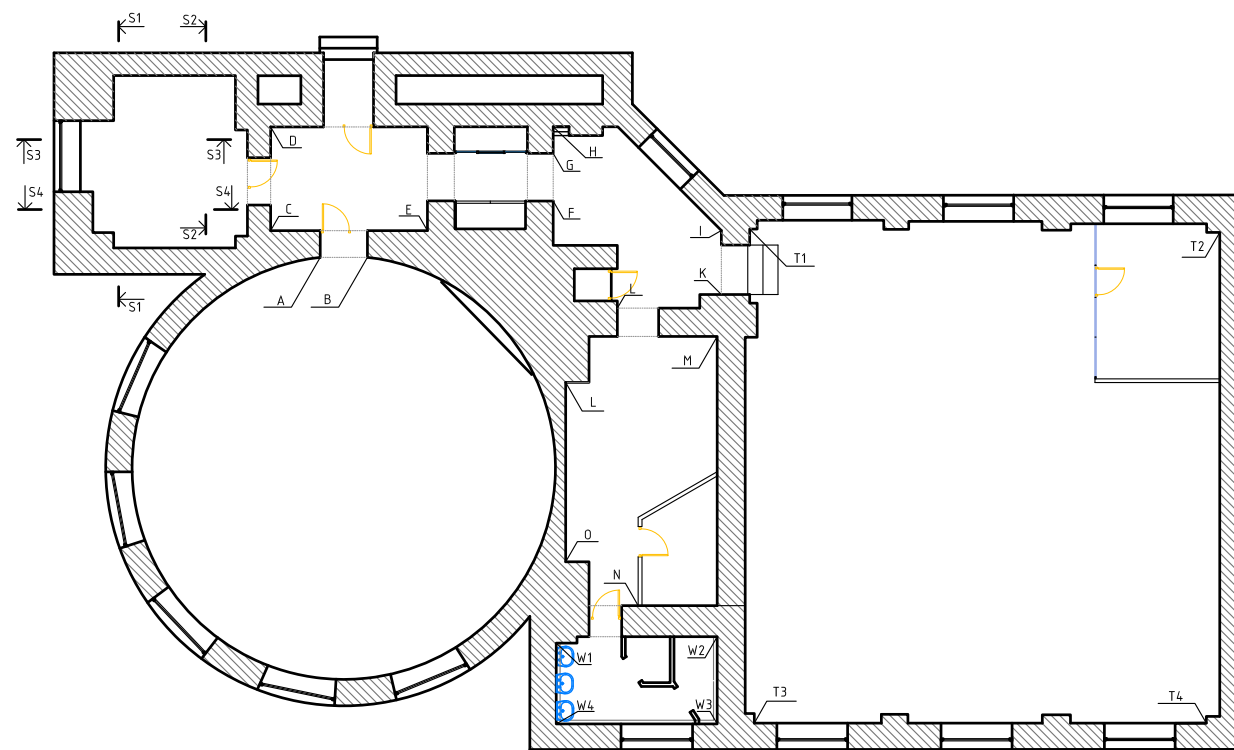
Plan finisaje

Data  
10.02.2020

A3

Coala  
10





### Specificări pentru Jaluzele Rulou:

#### Sala rotunda

Dimensiunea - 1980x2800 - 5 buc  
 Culoarea - turcoaz  
 Transparența - 50-70%



#### Hall

Dimensiunea - 1700x2500 - 1 buc  
 Culoarea - turcoaz  
 Transparența - 50-70%



#### Camera de baie

Dimensiunea - 1980x2800 - 1 buc  
 Culoarea - gri deschis  
 Transparența - 50-70%



#### Sala training room

Dimensiunea - 1980x2700 - 6 buc  
 Culoarea - gri deschis  
 Transparența - 50-70%

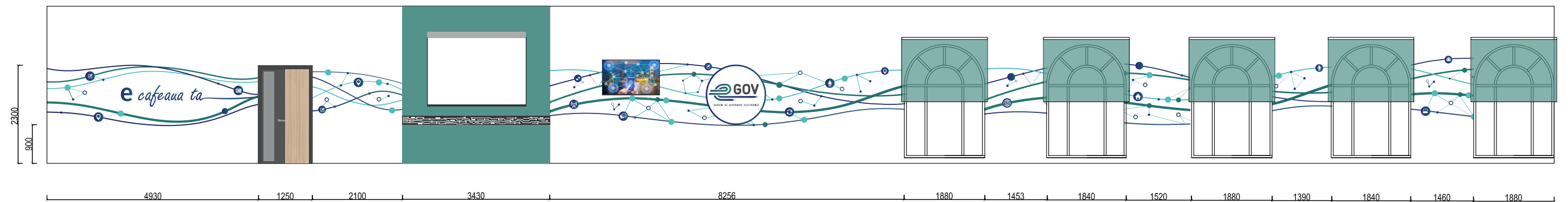


#### Office

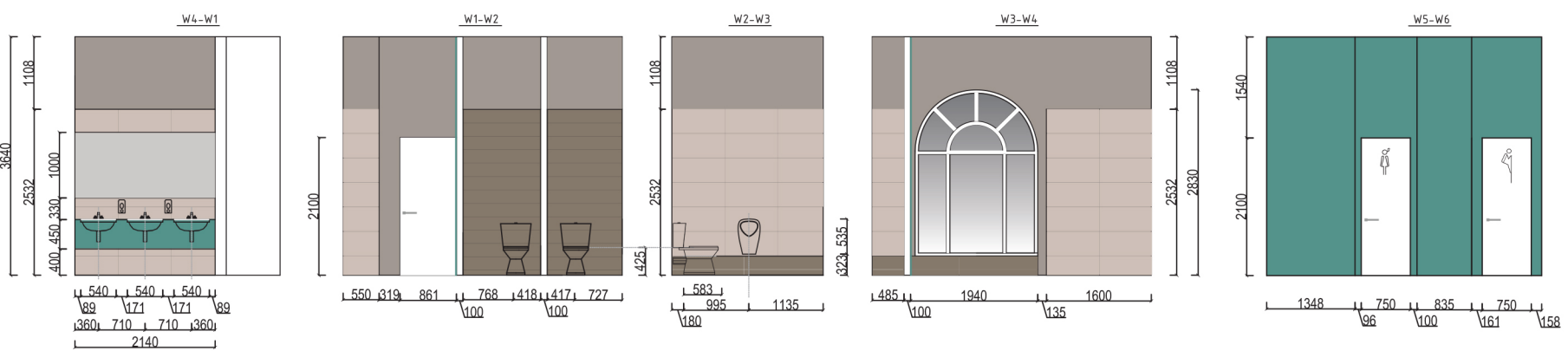
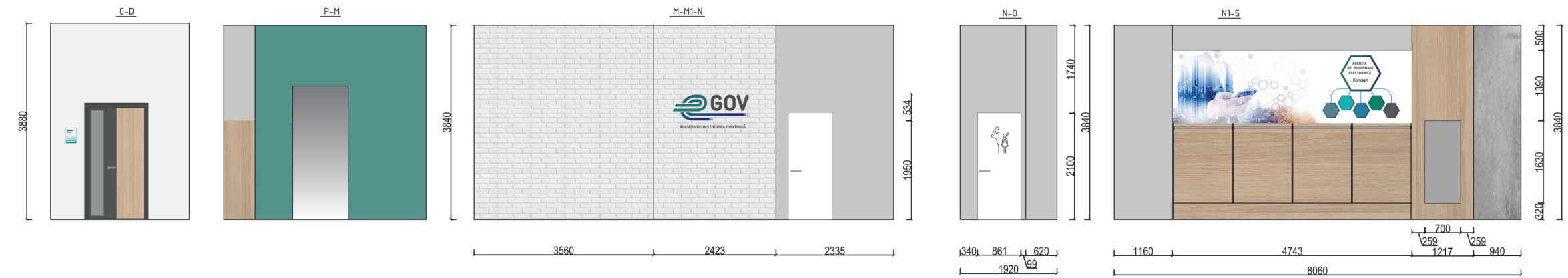
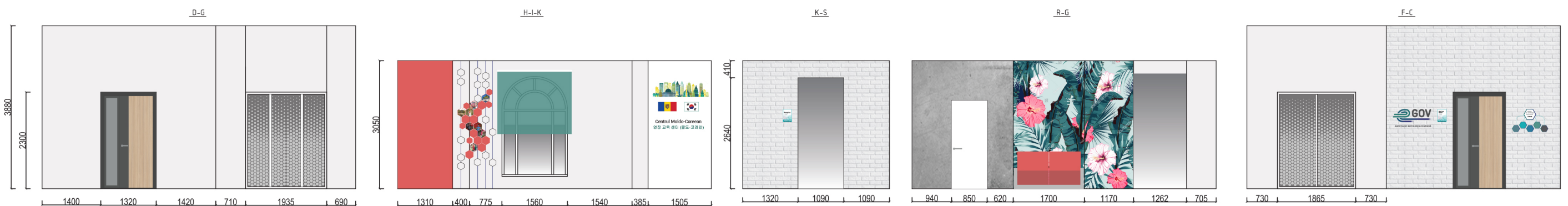
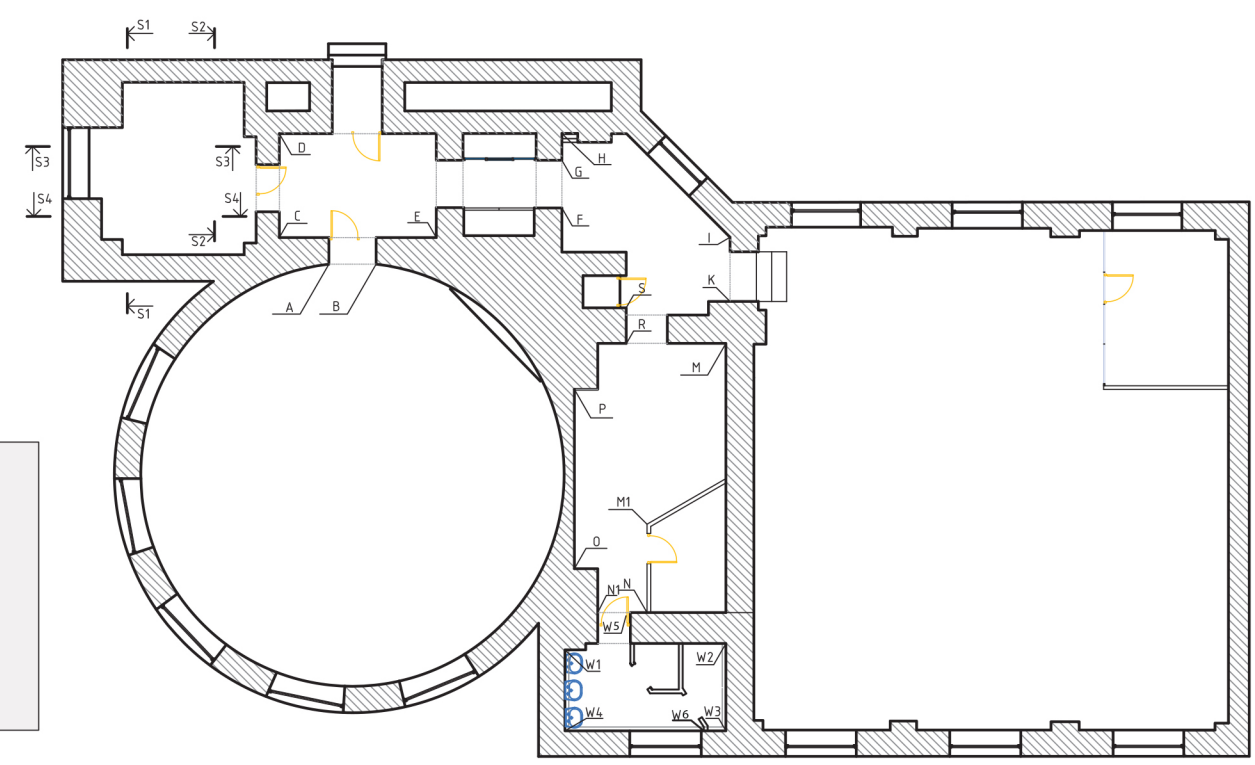
Dimensiunea - 1980x2700 - 1 buc  
 Culoarea - cafenie  
 Transparența - 50-70%



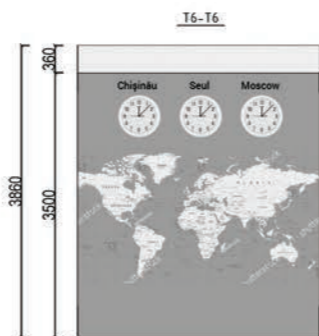
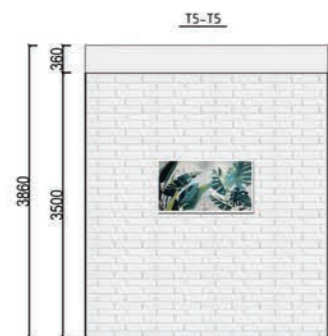
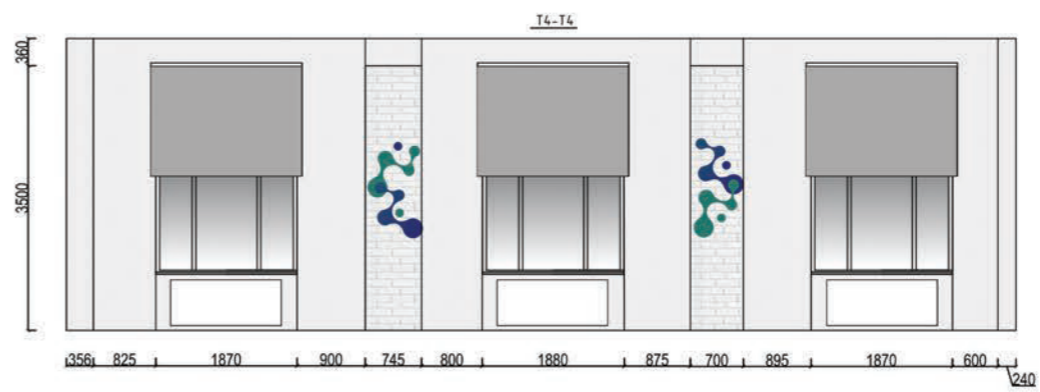
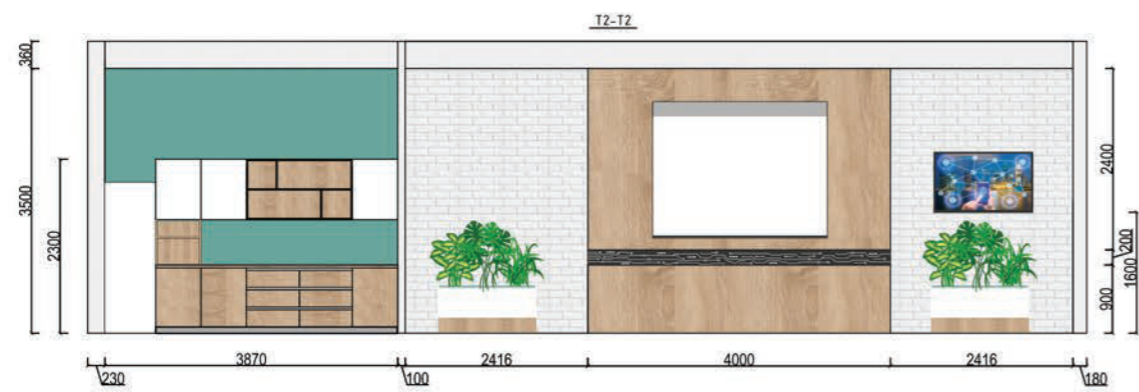
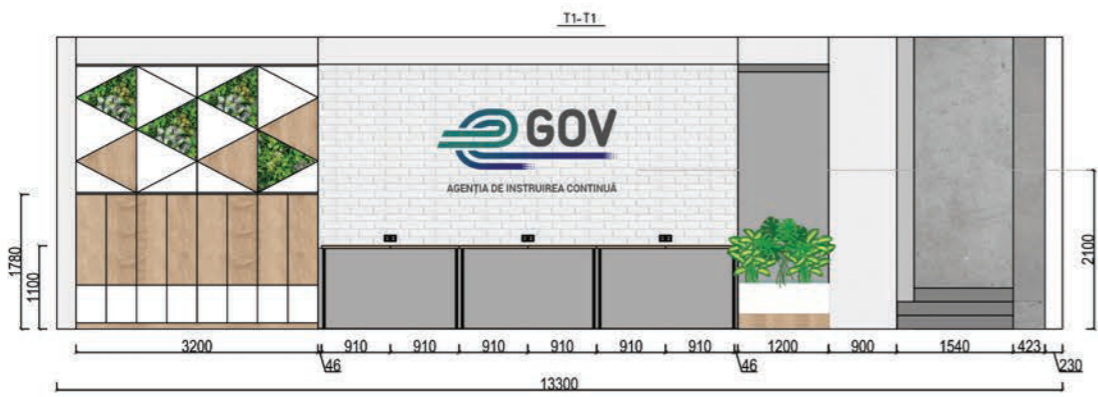
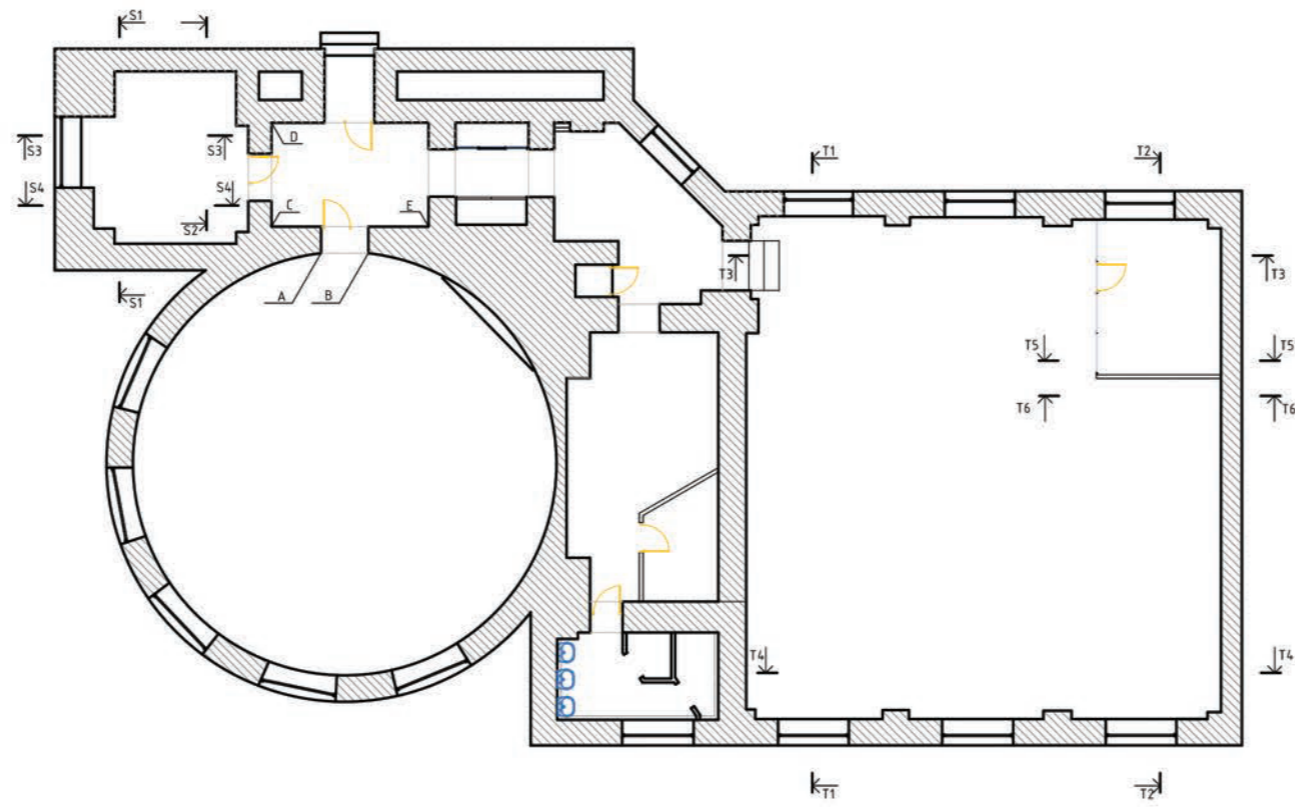
### Desfasurare A-B



Created by	Aproved by	Proiect arhitectura de interior		
EGOV		Desfasurare: sala rotunda A-B		
		Data 23.01.2020	A3	Coala 11



Created by Stela Sirbu	Approved by	Proiect arhitectura de interior			
EGOV		Desfasurari: office; reception; korean place; cam. sanitara	Data 10.02.20	A3	Coala 12



Created by	Aproved by	Proiect arhitectura de interior	
EGOV		Desfasurari: training room	
		Data 10.02.20	Coala A3 13