

BAYLAN

WATER METERS

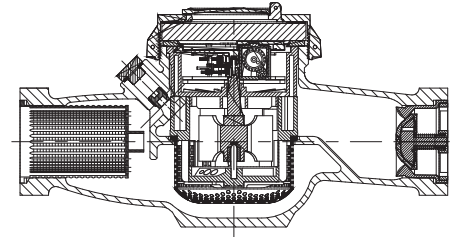
SD-10

Multi jet Semi-Dry type Water Meter



GENERAL

- MID Certified
 - Multi jet working principle assures a long service time
 - Low pressure loss, high sensitivity at initial flow
 - Suitable for potable water
 - Propylene glycol protected register
 - Special glass with high resistance to pressure and impact
 - Double filter • Non return valve
 - Electrostatic painted body made of corrosion resistant brass
 - Available for optical reading
 - Pulse output and AMR reading features are optional
 - 3 years of warranty • Almost no maintenance
 - Suitable for cold water up to 50°C
 - Service and spare parts available for 10 years
 - IP68 Protected
 - Environmental Classes
- Climatic : -10°C/+55°C | Mechanic: M1/O | Elektromagnetic: E2
- Q2 ≤ Q ≤ Q4 Maximum Permissible Error
 - Class 2 Water Meters; %±2 (Water Temp. ≤ 30°C), %±3 (Water Temp. > 30°C)
 - Class 1 Water Meters; %±1 (Water Temp. ≤ 30°C), %±2 (Water Temp. > 30°C)
 - Q1 ≤ Q < Q2 Maximum Permissible Error
 - Class 2 Water Meters; % ± 5 | Class 1 Water Meters; % ± 3



PERFORMANCE DATA

Overload Flowrate	Q4	m ³ /h	31,25
Permanent Flowrate	Q3	m ³ /h	25
Transitional Flowrate	Q2	m ³ /h	0,25
Minimum Flowrate	Q1	m ³ /h	0,156
Q3/Q1 (MI-001 OIML R49)	-		≤160
Mounting on the network	-		Horizontal
Maximum Registration Cap.	m ³		9999 / 99999 / 99999,99 / 99999,999
Initial Flow	Qi	l/h	30
Maximum Working Pressure	bar		16
Maximum Working Temp.	°C		50
Pressure Loss Class	bar		0,63
Smallest Reading Resolution	m ³ /h		0,00005
Class	-		Class 1 / Class 2

DIMENSIONS

Nominal diameter	DN	50	mm
Connecting diameter	D	G2 1/2	B
Total overall meter height	H	157,4	mm
Axis height	h	59,8	mm
Length	L	300	mm
Width	B	122,2	mm
Length with connections	LB	429	mm
Unit weight		4,35	kg
Package Weight (without connect)		19,15	kg
Package Weight (with connect)		25,35	kg
Quantity per package		4	pcs
Package dimensions		34x37x36,5	cm

