

OLEY PROTECTIVE COVERALLS

OLEY2311

Protective Coverall designed to help protect against Liquid Chemicals (Type 3-B, Type 4-B) hazardous dust (Type 5), certain light liquid splashes (Type 6)

To Increase Protection Against Less Dangerous Chemicals and Dusts; Two-layer, Hooded and Covered Zipper is used with Laminated Fabric.

Made of Soft, Sturdy, Breathable and Waterproof Fabric.

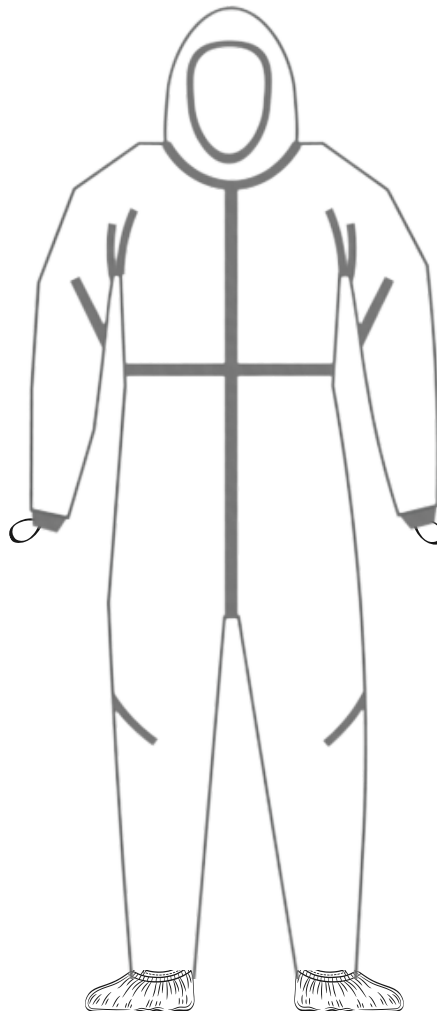


CE Marked

CE2841

60 gsm PE+PP Fabric

Seamless shoulder and sleeve tops for fewer entry points for contaminants



Elasticized waist and ankles and knit or elastic cuffs on all models for increased comfort and mobility



OLEY2311

ISO 13485:2016

ISO 9001:2015

ISO 45001:2018

The hood is flap closure at the chin with adhesive tape fastening.

The sleeve is secured with a loop for fastening to the finger to prevent the sleeve from slipping out of the gloves. Zipper part has adhesive tape to prevent opening by accident.

Shoe covers integral part of the coverall, provided with elastic at the ankle.

TYPE 3B + TYPE 4B EN 14605



TYPE 3 EN 14605 Determination of resistance to penetration by a jet of liquid

TYPE 4 EN 14605 Determination of resistance to penetration by liquid spray

TYPE 5 EN ISO 13982-1 Determination of inward leakage of aerosols & solid particles

TYPE 6 EN 13034 Determination of resistance to penetration by reduced liquid spray

EN 14126:2003/AC:2004

TYPE 5B + TYPE 6B EN 14605



TYPE 5 EN ISO 13982-1 Determination of inward leakage of aerosols & solid particles

TYPE 6 EN 13034 Determination of resistance to penetration by reduced liquid spray

EN 14126:2003/AC:2004

Sewn from Laminated Non-Woven Fabric with High Quality, Light Weight and Easy to Wear.
Made of Soft, Sturdy, Breathable and Waterproof Fabric.

EN ISO 13688 Protective Clothing - General Requirements

EN13034+ A1 Protective Clothing Against Liquid Chemicals (Type 6-B)

EN ISO 13982-1 Protective Clothing Against Solid Particules (Type 5-B)

EN 14605+A1 Protective Clothing Against Liquid Chemicals (Type 3-B, Type 4-B)

EN 14126 Protective Clothing Performance Requirements and Test Methods For Protective Clothing Against Infective Agents

PACKING LIST

1 Master Box can carry 50 pcs.(From L size to 3XL Size)

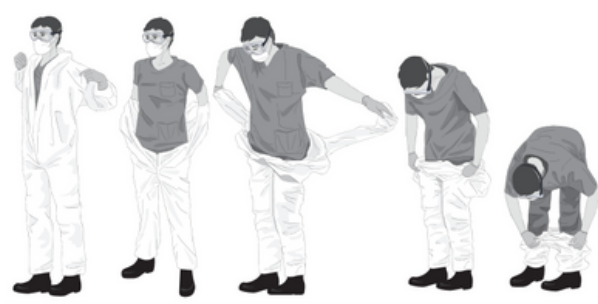
Box Dimensions are 60*40*40 cm

1 box is 9,32 kg

-Packing List may change based on sizes, please indicate the sizes

Sizes may be different ± 5 cm

SIZE	CHEST	LENGTH
M-L	92-108 cm	170-180 cm
L-XL	108-116 cm	180-190 cm
XL-2XL	116-124 cm	190-195 cm



How to wear coveralls?

Select appropriate coverall and read instruction of use. Remove shoes and secure trousers into socks.

Step into legs of coveralls and place coverall over safety boots. Pull coveralls toward arms and shoulders. Zip up coveralls to chin and ensure the hoods fits to face tightly. Seal the adhesive tape.

Wear boot covers over the coverall ankles.

How to take off coveralls?

Remove the adhesive tape on chest. Unzip the coverall till waist. Pull the hood away from the head. Do not touch to hood with used gloves or unwashed hands. Release the first arm and strip off the glove behind back. Release second arm from inside of the coverall. Sit and roll down contaminated coveralls through legs with boot covers. Be careful to not touch contaminated coveralls surface and wash your hands after doffing. Contaminated garment should be disposed in accordance with national regulations.

Attention: Constructed from microporous PE laminate material for Type 3/4 and Type 5/6 protection. Does not contain silicone or natural rubber latex components. Two-way zipper with sealable storm flap helps provide additional protection against contaminants.

Storage and Disposal

• Store in dry, clean conditions in original packaging • Store away from direct sunlight, sources of high temperature, and solvent vapors • Store within the temperature range -20°C to +25°C (-4°F to +68°F) and with relative humidity below 80% • Shelf life is five years from date of manufacture when stored as stated above. • Replace garments if damaged, heavily contaminated or in accordance with local work practice. • Handle and dispose of contaminated garments with care and in accordance with national regulations

