



ADD: NO.1 Weier Road, Chengnan Industry Zone, Jingjiang  
Economic Development Area, Jingjiang, Jiangsu  
P.C.: 214500  
TEL: +86 (0) 523-8488 4688  
FAX: +86 (0) 523-8488 4688  
E-mail: jsrip@vip.163.com



JIANGSU RIPE MEDICAL

# PRODUCT MANUAL



WWW.JSRIP.COM

BASING ON HONESTY, OFFERING BEST SERVICE

JIANGSU RIPE MEDICAL  
INSTRUMENTS TECHNOLOGY CO., LTD

# COMPANY PROFILE



Our company is a production factory, mainly produce all kinds of surgical stapler and medical instruments made by high polymer material. The company has advanced processing and inspection equipment, a 10,000-level and a 100,000-level purified workshop and complete production line, all kinds of testing rooms such as “physics laboratory”, “chemical laboratory” and “sterility laboratory”, it has modernize processing condition and testing means which are leading world level. The company has a strong technology power, a high-quality technical management team and a lot of stable and skilled production technician. We are taking advanced international craft brother as our goal and incorporating clinical operation experience to develop more

practicability and reliability products. On the assumption of assuring quality reliable, formed our own characteristic and obtained many patented technology. Our products are mainly sold to Europe, South America, Africa, USA and Southeast Asia. We are looking for agents to sell together, too. We have a management team which has excellent technology, abundant experience and on-time service to ensure best service.

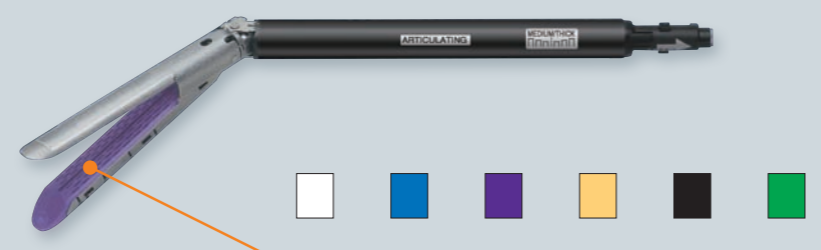
The company insists on the guideline of “quality first; all personnel excellent; basing on honesty; offering best service”, establishes and implements quality management system according to GB/T 19001, ISO13485 and EC (MDD instruction), furthermore, maintains it and keeps improvement. The company quality management system has already passed ISO13485 authentication, and the products have got CE mark. We will keep on improving our products and upgrading their quality to keep same step of the international market.

## Disposable Endoscopic Linear Cutter Stapler & Loading Cartridge

## Disposable Endoscopic Linear Cutter Stapler & Loading Cartridge

### PRODUCT FEATURE

1. Components can be 45 degree of rotation, flexible access different surgical site.
2. Three rows of staple with different altitude to ensure effect of anastomosis.
3. The control mechanism for equidistant clearance ensures that the staples at distant end and proximal end are uniform on the loading unit.
4. With the wide anterior opening of loading unit, the tissue can be inspired conveniently. The design of thin anvil make it smooth for entering without larger clearance separation so that the tissue damages are reduced.
5. The indicatory on cutter head is used to indicate the position of cutter head under the endoscope for better safety.
6. With 360 degree rotary, it is convenient to reach the tissue.
7. With the symmetrically-ergonomic design, the surgical operation can be achieved independently with left and right hand.
8. Intuitive and simple handle design, can make the doctor be clear at a glance, easy to operate.
9. Equipped with the safety inter lock device to prevent the used loading unit from being triggered again, thus ensured safety in surgical operation.
10. Strengthen the anvil design, to provide tissue closure force, so that the distal staple, proximal gap consistent to ensure the consistency of the effect of stitching.



white blue purple yellow black green

### SCOPE OF APPLICATION

Be applicable for resection, transection and creation of anastomosis in laparoscopic surgery.

### SPECIFICATIONS AND TECHNICAL PARAMETERS

Model	Product description	Instrument rod length
RYQJ-60	Shorter shaft	60
RYQJ-160	Standard shaft	160
RYQJ-260	Longer shaft	260

### CARTRIDGE SPECIFICATIONS

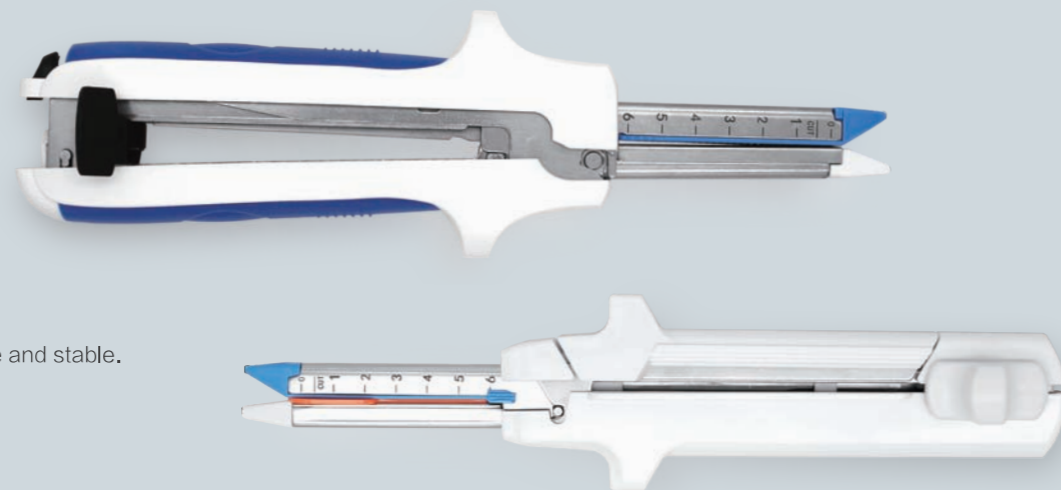
Model	RYQJZJ (A) -30V	RYQJZJ (A) -30L	RYQJZJ (A) -30H	RYQJZJ (A) -45V	RYQJZJ (A) -45L	RYQJZJ (A) -45H	RYQJZJ (A) -45M	RYQJZJ (A) -60L	RYQJZJ (A) -60H	RYQJZJ (A) -60M
<b>Suturing length (mm)</b>	30	30	30	45	45	45	45	60	60	60
<b>Application</b>	Vascular tissue	Thinner tissue	Normal tissue	Vascular tissue	Thinner tissue	Normal tissue	Thicker tissue	Thinner tissue	Normal tissue	Thicker tissue
<b>Staple height (mm)</b>	2.0 / 2.0 / 2.0	2.5 / 2.5 / 2.5	3.5 / 3.5 / 3.5	2.0 / 2.0 / 2.0	2.5 / 2.5 / 2.5	3.5 / 3.5 / 3.5	4.5 / 4.5 / 4.5	2.5 / 2.5 / 2.5	3.5 / 3.5 / 3.5	4.5 / 4.5 / 4.5
<b>Suitable Trocar diameter (mm)</b>	12	12	12	12	12	12	12	12	12	15

Model	RYQJZJ (B) -30V	RYQJZJ (B) -30L	RYQJZJ (B) -30H	RYQJZJ (B) -45V	RYQJZJ (B) -45L	RYQJZJ (B) -45H	RYQJZJ (B) -45M	RYQJZJ (B) -60L	RYQJZJ (B) -60H	RYQJZJ (B) -60M
<b>Suturing length (mm)</b>	30	30	30	45	45	45	45	60	60	60
<b>Application</b>	Vascular tissue	Thinner tissue	Thicker tissue	Vascular tissue	Thinner tissue	Normal tissue	Thicker tissue	Thinner tissue	Normal tissue	Thinner tissue
<b>Staple height (mm)</b>	2.0 / 2.0 / 2.0	2.5 / 2.5 / 3.0	3.5 / 3.5 / 4.0	2.0 / 2.0 / 2.0	2.5 / 2.5 / 3.0	3.5 / 3.5 / 4.0	4.5 / 4.5 / 4.8	2.5 / 2.5 / 3.0	3.5 / 3.5 / 4.0	4.5 / 4.5 / 4.8
<b>Suitable Trocar diameter (mm)</b>	12	12	12	12	12	12	15	12	12	15

# Disposable linear cutter staplers

## PRODUCT FEATURE

1. Large jaw opening facilitates adjusting position;
2. Intermediate locking system is more convenient and reliable;
3. Special self-locking system to prevent from misfiring;
4. Imported titanium staples with higher intensity and tenility;
5. Integral shaping anvil to ensure the shape deployed on the tissues;
6. Supporting pin in the cartridge makes force deployed evenly on the tissues;
7. Enhanced and unique non-slip firing handle design is more comfortable, safe and stable.



## SCOPE OF APPLICATION

It is suitable for the tissue disconnection, resection and suture of gastrointestinal surgery and extrathoracic surgery.

## SPECIFICATIONS AND TECHNICAL PARAMETERS

Specifications	RYZQ-60H	RYZQ-60L	RYZQ-80H	RYZQ-80L	RYZQ-100H	RYZQ-100L
Suture Length(mm)	63	63	83	83	103	103
Suture Thickness(mm)	1.5-2.5	1.2-2.0	1.5-2.5	1.2-2.0	1.5-2.5	1.2-2.0
Height of staple(mm)	4.8	3.8	4.8	3.8	4.8	3.8

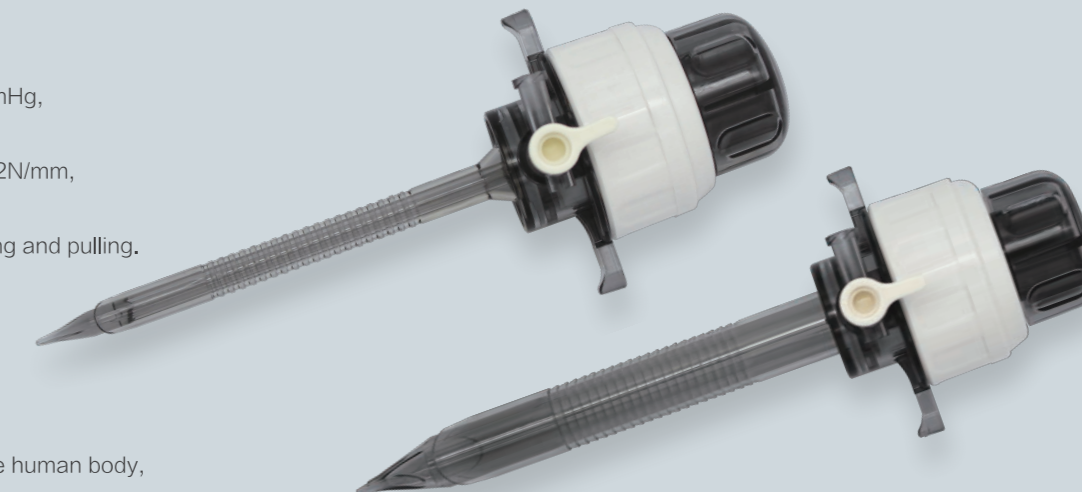
# Disposable Laparoscopic Trocar

## PRODUCT FEATURE

1. Good performance of dynamic sealing. It can bear pressure is greater than 37 mmHg, clinical required 8 ~ 15mmHg.
2. Resistance of plugging and pulling is very small. Dynamic test data is less than 3.2N/mm, similar imported brands less than 3.2N/mm.
3. Drag reduction structure of plum membrane flap valve, lower resistance of plugging and pulling.
4. Puncture cone head has cutting edge with six-sided knife type blade.
5. Puncture cone universal orientation, without directional insertion.

## SCOPE OF APPLICATION

Apply for laparoscopic and surgery procedures, puncture the abdominal tissue of the human body, establishment of the working channel for abdominal surgery.



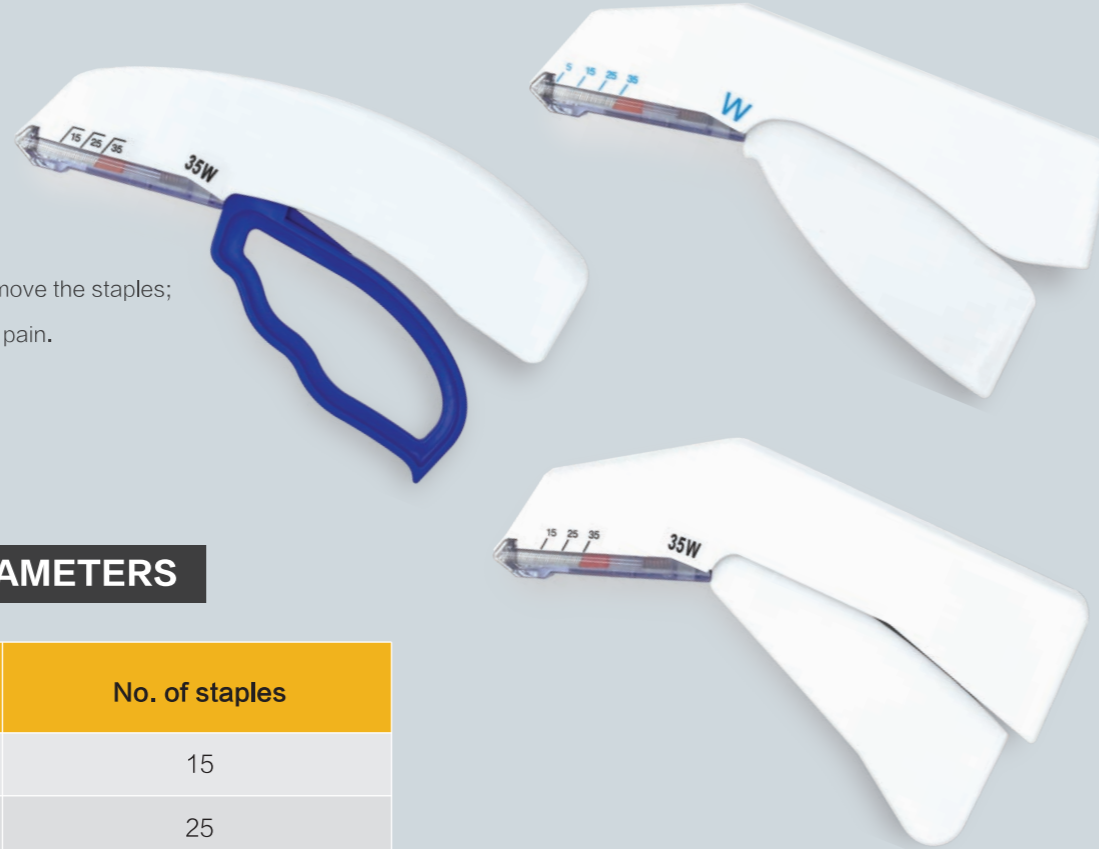
## SPECIFICATIONS AND TECHNICAL PARAMETERS

Model	Outer diameter of puncturecone(mm)	Length of puncture cone(mm)	Inner diameter of cannula(mm)	Length of cannula(mm)
RYTC-5/65	5.6	125	6	65
RYTC-10/65	10.3	135	10.5	65
RYTC-12/65	12.6	135	13	65
RYTC-15/65	15.4	135	15.7	65
RYTC-5/100	5.6	174	6	97
RYTC-10/100	10.3	183	10.5	98
RYTC-12/100	12.6	180	13	100
RYTC-15/100	15.4	203	15.7	111

# Disposable skin staplers

## PRODUCT FEATURE

1. Easy operation, flexible and convenient. Nail out and suture smoothly and accurately, safe, high-efficiency and quickly;
2. The wound of skin suturing is small. Avoid re-damage of epidermis tissue, and more helpful for would healing;
3. Beautiful and smooth suturing the wound is without "centipede feet", Healing scar is slight and neat;
4. Shorten suturing time, reduce pain of patients, no painful feeling when remove the staples;
5. Special staple remover, reduce injury of epidermal tissue and comfort the pain.



## SCOPE OF APPLICATION

Be applicable for closing skin wounds.

## SPECIFICATIONS AND TECHNICAL PARAMETERS

Specifications	Formed size of staple (mm)	No. of staples
RYPF-15W/R	7.0*4.5/6.0*4.0	15
RYPF-25W/R	7.0*4.5/6.0*4.0	25
RYPF-35W/R	7.0*4.5/6.0*4.0	35

# Disposable endoscopic specimen retrieval bag

## PRODUCT FEATURE

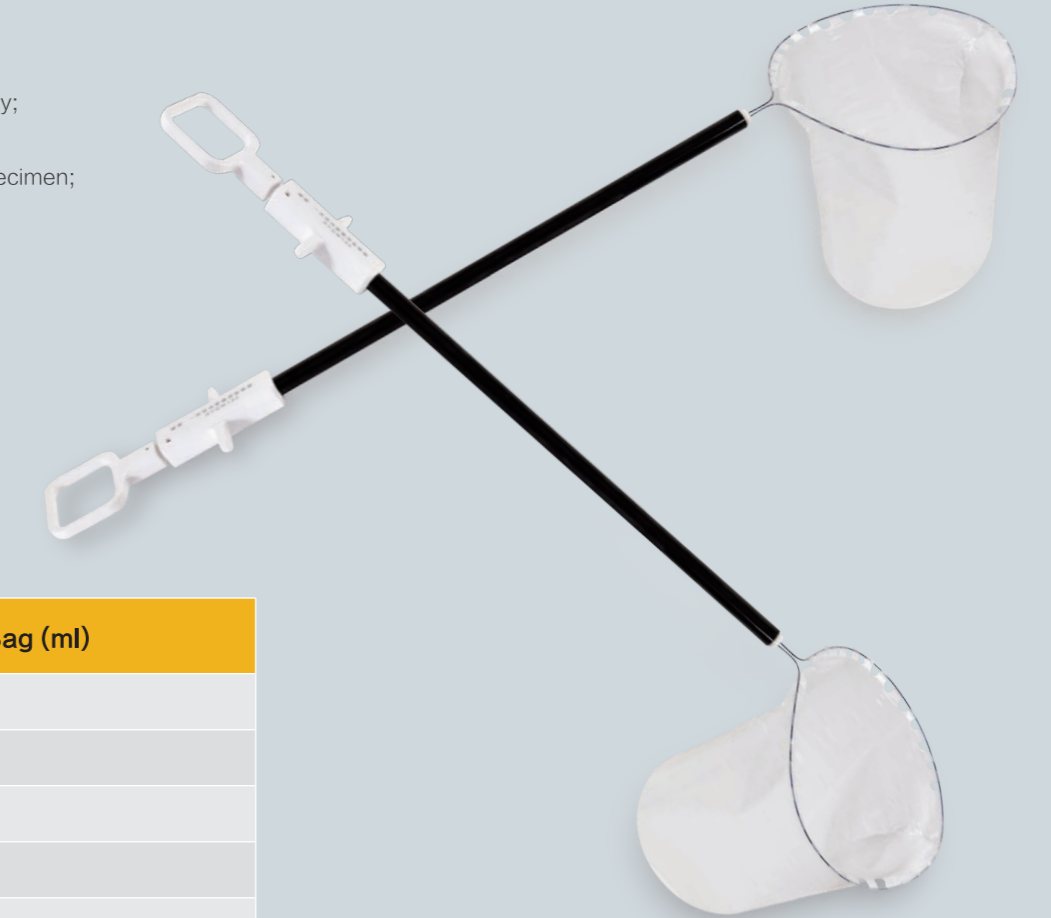
1. New ergonomic design makes a more comfortable hand-feel, controllability and stability;
2. To prevent tumor seeding and inflammation by tissue fluid penetration;
3. The bag can be expanded automatically when push the handle, it's easy to collect specimen;
4. Endo bag is designed in accordance to the minimally invasive theory, it can go through small trocar (10mm);
5. The bag is transparent and soft, with makes a good visually.

## SCOPE OF APPLICATION

Endo bag is applicable for minimally invasive surgeries, to remove specimens from body.

## SPECIFICATIONS AND TECHNICAL PARAMETERS

Model	Volume of Bag (ml)
RYQW40	≥40
RYQW60	≥75
RYQW80	≥200
RYQW100	≥450
RYQW130	≥700
RYQF100	≥800

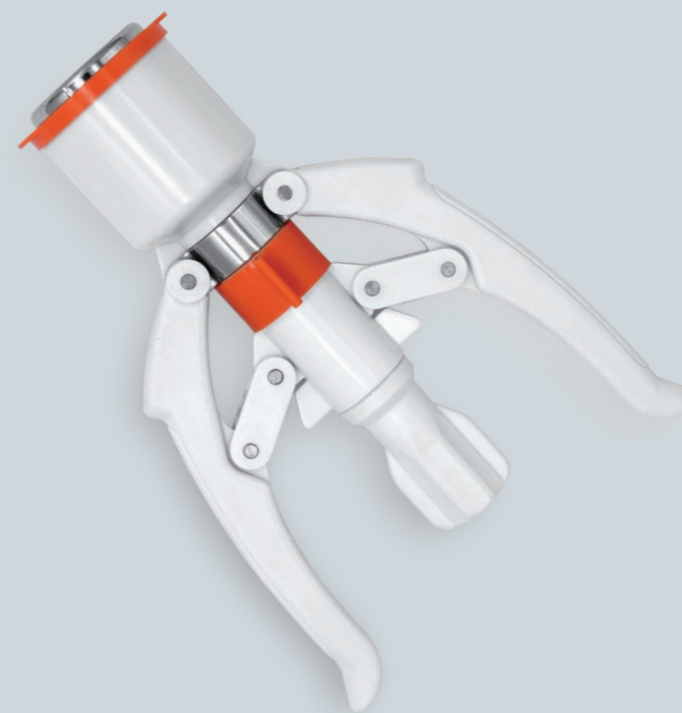


# Disposable circumcision stapler

# Disposable circumcision stapler

## PRODUCT FEATURE

1. Simple and fast, standard safety, very short time (3~5 minutes);
2. No need to remove stitches, one time completely;
3. The incision is neat and beautiful, and does not affect the visual experience;
4. Short abstinence period;
5. Make the body and life more healthy and harmonious.



## SCOPE OF APPLICATION

Be applicable for clinical circumcision suture.

## SPECIFICATIONS AND TECHNICAL PARAMETERS

Specifications	RYB-(A/B)10	RYB-(A/B)12	RYB-(A/B)15	RYB-(A/B)18	RYB-(A/B)22	RYB-(A/B)26	RYB-(A/B)30	RYB-(A/B)32	RYB-(A/B)34	RYB-(A/B)36
Inner diameter of ring knife	11	13	15	18	22	25	29	32	34	36
Height of Staples (mm)	3.5	3.5	3.5	3.5	3.5	3.5	3.5	3.5	3.5	3.5
No. of staple	-	10	11	13	16	18	20	22	24	26

## Disposable Three-row-staple Hemorrhoid Staplers

### PRODUCT FEATURE

1. Excellent hemostasis effect.
2. The special design of the outer ring can prevent the anastomotic tissue from being excessively squeezed.
3. Three rows of titanium staples can close the tissue effectively.
4. The larger lumen of the staple cartridge can accommodate more diseased tissues.
5. Stainless steel anvil and stainless steel guide shaft make closing and launching more stable.
6. Two symmetrical sutures help the tissue to enter the device.
7. The sharp round knife can cut effectively.
8. The best hemostatic effect of 0.75mm suture to clear compressed mucosa.
9. Fool launch position.
10. The improved Type-B anastomosis staple makes the anastomosis have higher tensile strength.



High inner circle  
-good hemostasis  
Low outer ring  
-good blood supply



Shape-B nails have both feet slightly retracted  
Make the anastomosis more tensile strength



Easy Firing position

### SCOPE OF APPLICATION

It is suitable for anal resection and internal rectal prolapse resection.

### SPECIFICATIONS AND TECHNICAL PARAMETERS

Specifications	Diameter (mm)	Height of staple (mm)
RYGC(L/F)-32III	33.7	3.8
RYGC(L/F)-34III	34	3.8

## Disposable hemorrhoid Multi-band ligature with Anoscopes

### PRODUCT FEATURE

1. Realized the automation, the ligation treatment process to save time, effort, practical, and easy;
2. Patient safety, avoid to take medicine, no injection, no cross infection;
3. Single complete diagnosis and surgical operation, only take 5 to 10 minutes;
4. After treatment, the complications are rare.
5. Rubber ring and elastic thread, one shot for dual use, a wider range of choices.

### SCOPE OF APPLICATION

Applicable for internal hemorrhoid in all stages, mixed hemorrhoid, anal papillae and rectal polyp.

### SPECIFICATIONS AND TECHNICAL PARAMETERS

Model	Specifications	Shape specifications	Outer diam. adsorption tube (mm)	Inner diam. ligation ring (mm)	Outer diam. Proctoscope (mm)
RYTZ	1-7	( A/B/C/D/E/F )	12	2.0	20



# Disposable Hemorrhoid Staplers

## PRODUCT FEATURE

1. Reasonable staple density to reduce postoperative bleeding;
2. Imported titanium wire provides higher strength and stretch;
3. Larger nail storage space to ensure sufficient tissue storage space;
4. The integrally formed nail anvil ensures that the anastomotic nail is formed completely;
5. The thickness of the resection can be adjusted according to the actual situation of tissue prolapse;
6. Anoscope opening It can be selective, can retain normal anal cushions, and is highly targeted.
7. It can effectively prevent postoperative anastomotic stenosis
8. Using a special anoscope with open-loop windows with different strokes, only the mucosa of the hemorrhoid area is exposed, which is highly targeted.



## SCOPE OF APPLICATION

It is suitable for suture repair of rectal mucosa in the anal canal or hemorrhoid mucosa tissue.

## SPECIFICATIONS AND TECHNICAL PARAMETERS

Model	Diameter (mm)	No. of Staples	Height of staple (mm)
RYHS-32	32	32	4.0
RYHS-34	34	34	4.0
RYHS-36	36	34	4.0



# Disposable Visible Hemorrhoid Staplers

## Transparent cartridge and push nails plate make the visual feedback clearer





# Disposable Three-row-staple Circular Staplers

## PRODUCT FEATURE

1. Three rows of surrounding titanium staples are more effective in closing the tissue.
2. The inner ring is high to stop bleeding, the outer ring is low to get good blood supply.
3. Shaped B nail has a slight adduction on both feet, which makes the anastomotic stoma with more tensile strength.
4. No need to manually strengthen anastomotic stoma and avoid anastomotic stenosis.

## SCOPE OF APPLICATION

Especially suitable for difficult to expose site anastomosis, such as pelvic anastomosis, transabdominal high position anastomosis, thoracotop anastomosis

## SPECIFICATIONS AND TECHNICAL PARAMETERS

Specifications	Outer Diameter ( mm)	Height of staple ( mm)
RYWG-(A/B) 24III	24.1	3.8
RYWG-(A/B) 26III	26.1	3.8
RYWG-(A/B) 29III	29.1	3.8
RYWG-(A/B) 32III	32.1	3.8



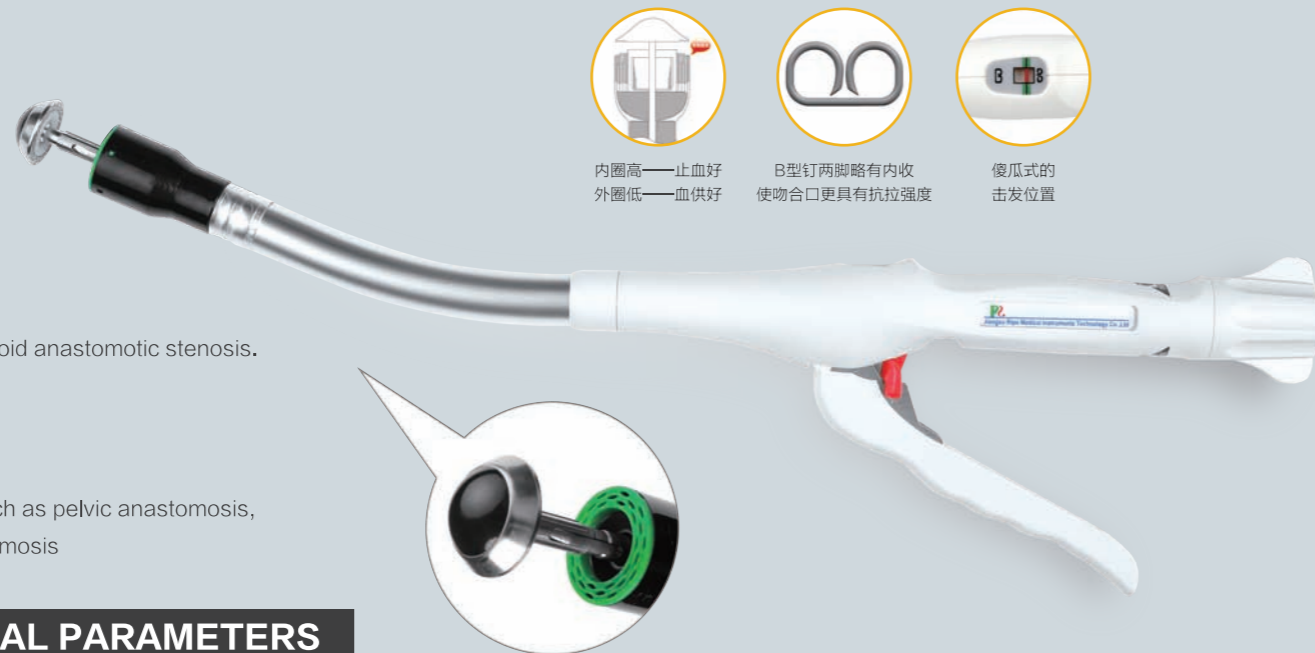
内圈高——止血好  
外圈低——血供好



B型钉两脚略有内收  
使吻合口更具有抗拉强度



傻瓜式的  
击发位置



# Disposable circular staplers

## PRODUCT FEATURE

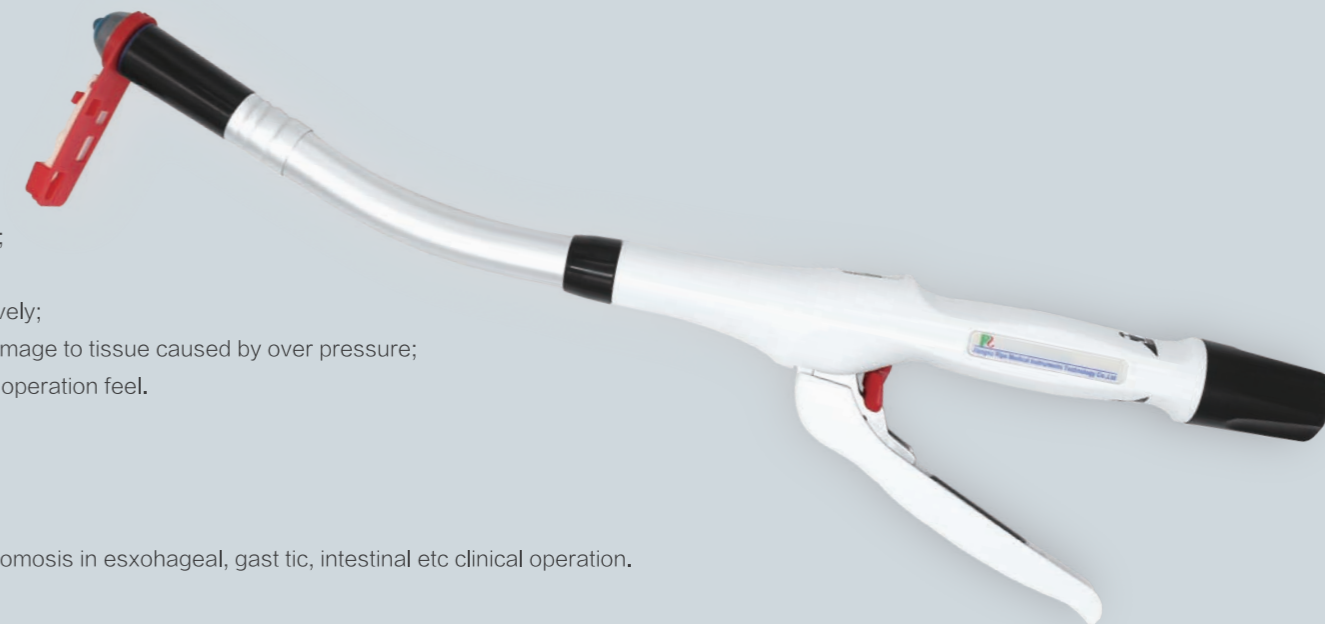
1. The green one of indicator can easily show the thickness of tissue to be cut and anastomosed;
2. Reasonable number of staples conduce to reduce the postoperative bleeding;
- 3.Imported titanium staples with higher intensity and tenility;
- 4.Integral shaping anvil to ensure the shape of staples;
- 5.Large diameter ratio, avoids anastomotic stenosis effectively;
- 6.Minimum gap between anvil and cartridge to avoid the damage to tissue caused by over pressure;
- 7.Ergonomic shape design, with as a comfortable powerful operation feel.

## SCOPE OF APPLICATION

Be applicable for end to end, end to side, side to side anastomosis in esohageal, gast tic, intestinal etc clinical operation.

## SPECIFICATIONS AND TECHNICAL PARAMETERS

Specifications	RYCS-21	RYCS-24	RYCS-26	RYCS-29	RYCS-32	RYCS-34
Outer Diameter(mm)	21.6	23.6	25.6	28.6	31.6	33.6
Ring cutting outer diameter(mm)	13	15	17	20	22	24
Height of staple(mm)	4.8	4.8	4.8	5.2	5.2	5.2



# Disposable linear staplers



## PRODUCT FEATURE

- 1. Clamp the tissue automatically, be simple to operate by single hand;
- 2. Two-section close, conduces to reposition the closed tissue conveniently;
- 3.Imported titanium staples with higher intensity and tensility;
- 4.Integral shaping anvil to ensure the shape of staples;
- 5.Manual control retaining pin to make operation more convenient.



## SCOPE OF APPLICATION

Be applicable for reconstruction of digestive tract as stomach, intestine, and creation of anastomosis or incision of other organs.

## SPECIFICATIONS AND TECHNICAL PARAMETERS

Specifications	RYZX (A/B)-30V	RYZX (A/B)-30L/H	RYZX (A/B)-45L/H	RYZX (A/B)-60L/H	RYZX (A/B)-90L/H
Suture Length(mm)	35	35	46	62.5	95.5
Suture Thickness(mm)	0.5-1.2	1.5-2.5/1.0-2.0	1.5-2.5/1.0-2.0	1.5-2.5/1.0-2.0	1.5-2.5/1.0-2.0
Height of staple(mm)	2.5	4.8/3.8	4.8/3.8	4.8/3.8	4.8/3.8